



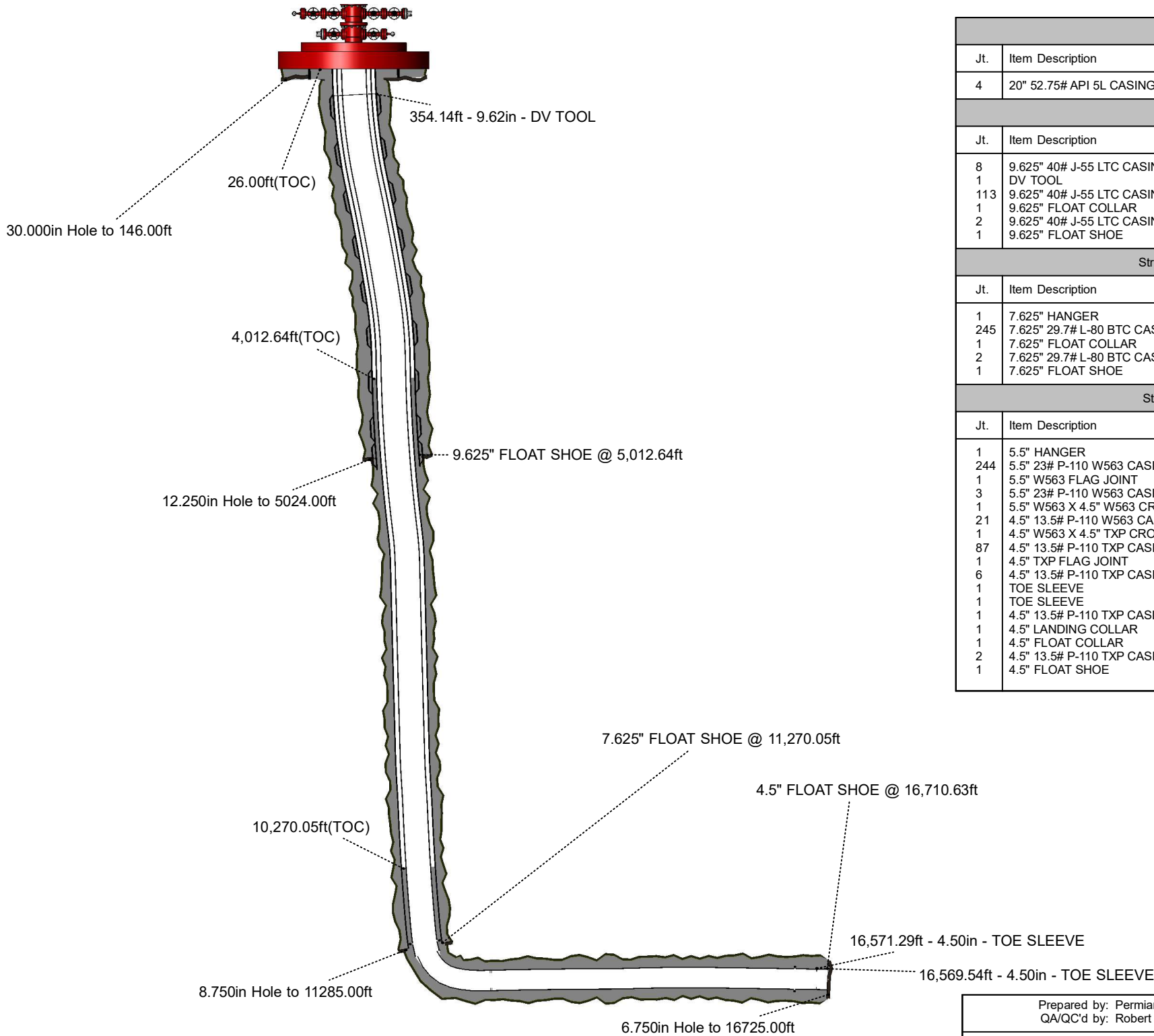
Well: UNIVERSITY 20 PW 2503H
Project: WINKLER - TEXAS CENTRAL (NAD27)
API #: 42495341830000
Lat: 31° 41' 26.237 N
Final north: 5,371.98ft
Event code: DRO
Event Start Date: 12/15/2018
Water Depth: 2,772.10ft
Rig Name: PRECISION 565
H2S present: N

Wellbore: UNIVERSITY 20 PW 2503H
Site: UL-20-36-P1
License no.: 841786
Long: 103° 15' 49.812 W
Final east: -2,065.13ft
Event Objective: Drill - Wolfcamp Beta 2
Event End date: 02/17/2019
ReferencedDatum: DFE @ 2,798.10ft (PRECISION 565)
Rig Released: 02/17/2019 04:00



Hole Section For:	Secured Date	Top MD(ft)	Base MD(ft)	Well Path Details
30" CONDUCTOR	12/15/2018	26.00	146.00	
12.25" SURFACE	12/18/2018	146.00	5,024.00	
8.75" INTERMEDIATE	01/05/2019	5,024.00	11,285.00	
6.75" PRODUCTION	02/16/2019	11,285.00	16,725.00	
Wellhead: PERMIAN PRODUCTION TREE WITH 11.00 TSS CSG HEAD CURRENT Working Press: 10,000psi Vendor: CAMERON				Maximum DLS: 15.52"/100ft Max DLS Depth: 11,513.00ft KO MD: 0.00ft VSA: 343.71° FORMATION: WOLFCAMP SHALE B1 MD BH: 16,725.00ft TVD BH: 11,857.15ft
Components Description				MD BH: 16,725.00ft TVD BH: 11,857.15ft PBDT: 25.98ft
10K, 11 IN NOM 10K OEC BX-158 CSG HEAD W/ 1-13/16" 10K VLVS				
11" 10K x 5-1/8" 15K w/ 1-13/16" 15K valves 5" 15K x 2-9/16 10K ADAPTER 2-9/16" Manual Gate Valve (Lower Master) 10M 2-9/16" Manual Gate Valve (Upper Master) 10M 2-9/16", 10M flow cross with 1-13/16" wing sections 2-9/16" Manual Gate Valve (Crown) 10M 1/2" NPT Analog Guage				

ALL WELLBORES							
WB #	WB UWI	Name	KOP MD(ft)	Spud/KO date	Date TD	MD BH(ft)	TVD BH(ft)
01	42495341830000	UNIVERSITY 20 PW 2503H	0.00	12/15/2018	02/15/2019	16,725.00	11,857.15



String Type: Conductor - run 20.000in MD Top: 26.00ft MD Landed: 146.00ft								
Jt.	Item Description	MD Top(ft)	Length(ft)	OD(in)	ID(in)	Wt.(ppf)	Grade	Top Conn
4	20" 52.75# API 5L CASING	26.00	120.00	20.000	19.500	52.75	L360	UNK
String Type: Surface Casing Size: 9.625in MD Top: 26.00ft MD Landed: 5,012.64ft								
Jt.	Item Description	MD Top(ft)	Length(ft)	OD(in)	ID(in)	Wt.(ppf)	Grade	Top Conn
8	9.625" 40# J-55 LTC CASING JOINTS	26.00	328.14	9.625	8.835	40.00	J55,	LTC
1	DV TOOL	354.14	2.70	9.625	8.835	40.00	J55,	LTC
113	9.625" 40# J-55 LTC CASING JOINTS	356.84	4,575.37	9.625	8.835	40.00	J55,	LTC
1	9.625" FLOAT COLLAR	4,932.21	1.54	9.625	8.835	40.00	J55,	LTC
2	9.625" 40# J-55 LTC CASING JOINTS	4,933.75	77.32	9.625	8.835	40.00	J55,	LTC
1	9.625" FLOAT SHOE	5,011.07	1.57	9.625	8.835	40.00	J55,	LTC
String Type: Intermediate Casing Size: 7.625in MD Top: 26.00ft MD Landed: 11,270.05ft								
Jt.	Item Description	MD Top(ft)	Length(ft)	OD(in)	ID(in)	Wt.(ppf)	Grade	Top Conn
1	7.625" HANGER	26.00	4.10	7.625	6.875	29.70	L80-	BTC
245	7.625" 29.7# L-80 BTC CASING JOINTS	30.10	11,148.42	7.625	6.875	29.70	L80-	BTC
1	7.625" FLOAT COLLAR	11,178.52	1.94	7.625	6.875	29.70	L80-	BTC
2	7.625" 29.7# L-80 BTC CASING JOINTS	11,180.46	87.59	7.625	6.875	29.70	L80-	BTC
1	7.625" FLOAT SHOE	11,268.05	2.00	7.625	6.875	29.70	L80-	BTC
String Type: Production Casing Size: 4.500in MD Top: 26.00ft MD Landed: 16,710.63ft								
Jt.	Item Description	MD Top(ft)	Length(ft)	OD(in)	ID(in)	Wt.(ppf)	Grade	Top Conn
1	5.5" HANGER	26.00	4.00	5.500	4.670	23.00	P110	W563
244	5.5" 23# P-110 W563 CASING JOINTS	30.00	11,182.31	5.500	4.670	23.00	P110	W563
1	5.5" W563 FLAG JOINT	11,212.31	22.44	5.500	4.670	23.00	P110	W563
3	5.5" 23# P-110 W563 CASING JOINTS	11,234.75	136.56	5.500	4.670	23.00	P110	W563
1	5.5" W563 X 4.5" W563 CROSSOVER	11,371.31	3.00	5.500	4.670	23.00	P110	W563
21	4.5" 13.5# P-110 W563 CASINGJOINTS	11,374.31	954.16	4.500	3.920	13.50	P110	W563
1	4.5" W563 X 4.5" TXP CROSSOVER	12,328.47	23.57	4.500	3.920	13.50	P110	W563
87	4.5" 13.5# P-110 TXP CASING JOINTS	12,352.04	3,922.54	4.500	3.920	13.50	P110	TXP
1	4.5" TXP FLAG JOINT	16,274.58	22.87	4.500	3.920	13.50	P110	TXP
6	4.5" 13.5# P-110 TXP CASING JOINTS	16,297.45	272.09	4.500	3.920	13.50	P110	TXP
1	TOE SLEEVE	16,569.54	1.75	4.500	3.920	13.50	P110	TXP
1	TOE SLEEVE	16,571.29	1.75	4.500	3.920	13.50	P110	TXP
1	4.5" 13.5# P-110 TXP CASING JOINT	16,573.04	40.30	4.500	3.920	13.50	P110	TXP
1	4.5" LANDING COLLAR	16,613.34	1.00	4.500	3.920	13.50	P110	TXP
1	4.5" FLOAT COLLAR	16,614.34	2.12	4.500	3.920	13.50	P110	TXP
2	4.5" 13.5# P-110 TXP CASING JOINTS	16,616.46	91.78	4.500	3.920	13.50	P110	TXP
1	4.5" FLOAT SHOE	16,708.24	2.39	4.500	3.920	13.50	P110	TXP

Cement CEMENT 20" CONDUCTOR CASING			
Top MD(ft)	Base MD(ft)	Type	Vol Returns(bbl)
26.00	146.00	Casing	
Cement CEMENT 9.625" SURFACE CASING			
Top MD(ft)	Base MD(ft)	Type	Vol Returns(bbl)
26.00	5,024.00	Casing	417.0
Cement CEMENT 7.625" INTERMEDIATE CASING			
Top MD(ft)	Base MD(ft)	Type	Vol Returns(bbl)
4,012.64	11,285.00	Casing	
Cement CEMENT 4.5" & 5.5" PRODUCTION CASING			
Top MD(ft)	Base MD(ft)	Type	Vol Returns(bbl)
10,270.05	16,725.00		

Prepared by: Permian RC Team QA/QC'd by: Robert Hahn	Prepared date: xx/xx/20xx QA/QC'd: 05/17/2019
UA_PERMIAN_11x17_DRO_HZ_ver4	