



Well: UNIVERSITY 20 PW 2501H
Project: WINKLER - TEXAS CENTRAL (NAD27)
API #: 42495341810000
Lat: 31° 41' 26.614 N
Final north: 5,734.81ft
Event code: DRO
Event Start Date: 12/20/2018
Elevation: 2,772.10ft
Rig Name: PRECISION 565
H2S present: N

Wellbore: UNIVERSITY 20 PW 2501H
Site: UL-20-36-P1
License no.: 841761
Long: 103° 15' 49.953 W
Final east: -767.13ft
Event Objective: Drill - Wolfcamp Beta 2
Event End date: 01/24/2019
ReferencedDatum: DFE @ 2,798.10ft (PRECISION 565)
Rig Released: 01/24/2019 22:00



Hole Section For:	Secured Date	Top MD(ft)	Base MD(ft)
30" CONDUCTOR	12/19/2018	26.00	146.00
12.25" SURFACE	12/23/2018	146.00	5,013.00
8.75" INTERMEDIATE	01/15/2019	5,013.00	11,371.00
6.75" PRODUCTION	01/24/2019	11,371.00	16,822.00

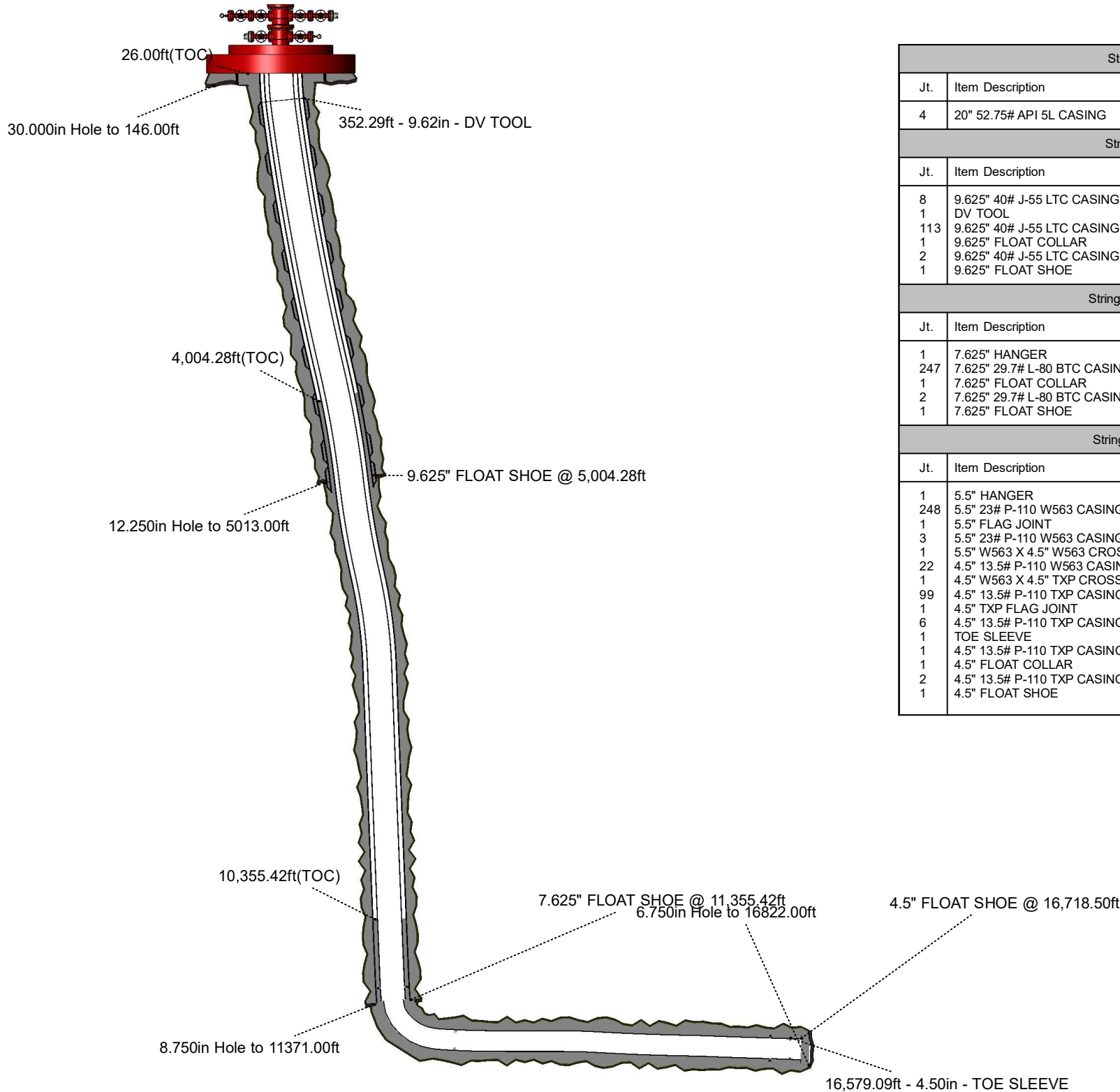
Well Path Details
Maximum DLS: 14.15"/100ft Max DLS Depth: 11,702.50ft KO MD: -0.50ft VSA: 343.71° FORMATION: WOLFCAMP SHALE B1 MD BH: 16,821.50ft TVD BH: 11,902.66ft

Wellhead: PERMIAN PRODUCTION TREE WITH 11.00 TSS CSG HEAD CURRENT
Working Press: 10,000psi
Vendor: CAMERON

Components Description	Removal date
10K, 11 IN NOM 10K OEC BX-158 CSG HEAD W/ 1-13/16" 10K VLVS 11" 10K x 5-1/8" 15K w/ 1-13/16" 15K valves 5" 15K x 2-9/16 10K ADAPTER 2-9/16" Manual Gate Valve (Lower Master) 10M 2-9/16" Manual Gate Valve (Upper Master) 10M 2-9/16", 10M flow cross with 1-13/16" wing sections 2-9/16" Manual Gate Valve (Crown) 10M 1/2" NPT Analog Guage	

ALL WELLBORES

WB #	WB UWI	Name	KOP MD(ft)	Spud/KO date	Date TD	MD BH(ft)	TVD BH(ft)
01	42495341810000	UNIVERSITY 20 PW 2501H	-0.50	12/21/2018	01/22/2019	16,821.50	11,902.66



MD BH: 16,821.50ft
TVD BH: 11,902.66ft
PBSD: 0.00ft

String Type: Conductor - run 20.000in MD Top: 26.00ft MD Landed: 146.00ft								
Jt.	Item Description	MD Top(ft)	Length(ft)	OD(in)	ID(in)	Wt.(ppf)	Grade	Top Conn
4	20" 52.75# API 5L CASING	26.00	120.00	20.000	19.500	52.75	L360	UNK
String Type: Surface Casing Size: 9.625in MD Top: 26.00ft MD Landed: 5,004.28ft								
Jt.	Item Description	MD Top(ft)	Length(ft)	OD(in)	ID(in)	Wt.(ppf)	Grade	Top Conn
8	9.625" 40# J-55 LTC CASING JOINTS	26.00	326.29	9.625	8.835	40.00	J55,	LTC
1	DV TOOL	352.29	2.64	9.625	8.835	40.00	J55,	LTC
113	9.625" 40# J-55 LTC CASING JOINTS	354.93	4,563.80	9.625	8.835	40.00	J55,	LTC
1	9.625" FLOAT COLLAR	4,918.73	1.95	9.625	8.835	40.00	J55,	LTC
2	9.625" 40# J-55 LTC CASING JOINTS	4,920.68	82.00	9.625	8.835	40.00	J55,	LTC
1	9.625" FLOAT SHOE	5,002.68	1.60	9.625	8.835	40.00	J55,	LTC
String Type: Intermediate Casing Size: 7.625in MD Top: 26.00ft MD Landed: 11,355.42ft								
Jt.	Item Description	MD Top(ft)	Length(ft)	OD(in)	ID(in)	Wt.(ppf)	Grade	Top Conn
1	7.625" HANGER	26.00	4.13	7.625	6.875	29.70	L80-	BTC
247	7.625" 29.7# L-80 BTC CASING JOINTS	30.13	11,233.17	7.625	6.875	29.70	L80-	BTC
1	7.625" FLOAT COLLAR	11,263.30	1.94	7.625	6.875	29.70	L80-	BTC
2	7.625" 29.7# L-80 BTC CASING JOINTS	11,265.24	88.18	7.625	6.875	29.70	L80-	BTC
1	7.625" FLOAT SHOE	11,353.42	2.00	7.625	6.875	29.70	L80-	BTC
String Type: Production Casing Size: 4.500in MD Top: 26.00ft MD Landed: 16,718.50ft								
Jt.	Item Description	MD Top(ft)	Length(ft)	OD(in)	ID(in)	Wt.(ppf)	Grade	Top Conn
1	5.5" HANGER	26.00	3.75	5.500	4.670	23.00	P110	W563
248	5.5" 23# P-110 W563 CASING JOINTS	29.75	11,144.52	5.500	4.670	23.00	P110	W563
1	5.5" FLAG JOINT	11,174.27	19.90	5.500	4.670	23.00	P110	W563
3	5.5" 23# P-110 W563 CASING JOINTS	11,194.17	138.03	5.500	4.670	23.00	P110	W563
1	5.5" W563 X 4.5" W563 CROSSOVER	11,332.20	2.95	5.500	4.670	23.00	P110	W563
22	4.5" 13.5# P-110 W563 CASING JOINTS	11,335.15	1,008.50	4.500	3.920	13.50	P110	W563
1	4.5" W563 X 4.5" TXP CROSSOVER	12,343.65	19.59	4.500	3.920	13.50	P110	W563
99	4.5" 13.5# P-110 TXP CASING JOINTS	12,363.24	3,955.79	4.500	3.920	13.50	P110	TXP
1	4.5" TXP FLAG JOINT	16,319.03	19.84	4.500	3.920	13.50	P110	TXP
6	4.5" 13.5# P-110 TXP CASING JOINTS	16,338.87	240.22	4.500	3.920	13.50	P110	TXP
1	TOE SLEEVE	16,579.09	2.13	4.500	3.920	13.50	P110	TXP
1	4.5" 13.5# P-110 TXP CASING JOINT	16,581.22	46.53	4.500	3.920	13.50	P110	TXP
1	4.5" FLOAT COLLAR	16,627.75	1.75	4.500	3.920	13.50	P110	TXP
2	4.5" 13.5# P-110 TXP CASING JOINTS	16,629.50	86.60	4.500	3.920	13.50	P110	TXP
1	4.5" FLOAT SHOE	16,716.10	2.40	4.500	3.920	13.50	P110	TXP

Cement CEMENT 20" CONDUCTOR CASING			
Top MD(ft)	Base MD(ft)	Type	Vol Returns(bbl)
26.00	146.00	Casing	
Cement CEMENT 9.625" SURFACE CASING			
Top MD(ft)	Base MD(ft)	Type	Vol Returns(bbl)
26.00	5,013.00	Casing	161.0
Cement CEMENT 7.625" INTERMEDIATE CASING			
Top MD(ft)	Base MD(ft)	Type	Vol Returns(bbl)
4,004.28	11,371.00	Casing	
Cement CEMENT 4.5" & 5.5" PRODUCTION CASING			
Top MD(ft)	Base MD(ft)	Type	Vol Returns(bbl)
10,355.42	16,822.00	Casing	