



RAILROAD COMMISSION OF TEXAS

Form W-2

1701 N. Congress
P.O. Box 12967
Austin, Texas 78701-2967

Status: Approved
Date: 07/25/2019
Tracking No.: 212680

OIL WELL POTENTIAL TEST, COMPLETION OR RECOMPLETION REPORT, AND LOG

OPERATOR INFORMATION

Operator Name: FELIX ENERGY HOLDINGS II, LLC Operator No.: 265322
Operator Address: FELIX ENERGY 1530 16TH ST SUITE 500 DENVER, CO 80202-0000

WELL INFORMATION

API No.: 42-495-34108 County: WINKLER
Well No.: 1H RRC District No.: 08
Lease Name: UL MAROON 0904-21 A Field Name: PHANTOM (WOLFCAMP)
RRC Lease No.: 51806 Field No.: 71052900
Location: Section: 16, Block: 21, Survey: UL, Abstract: U56

Latitude: Longitude:
This well is located 4.27 miles in a W
direction from WINK,
which is the nearest town in the county.

FILING INFORMATION

Purpose of filing: Initial Potential
Type of completion: New Well
Well Type: Producing Completion or Recompletion Date: 11/25/2018

Type of Permit Date Permit No.
Permit to Drill, Plug Back, or Deepen 04/13/2018 838557
Rule 37 Exception
Fluid Injection Permit
O&G Waste Disposal Permit
Other:

COMPLETION INFORMATION

Spud date: 04/30/2018 Date of first production after rig released: 11/25/2018
Date plug back, deepening, recompletion, or drilling operation commenced: 04/30/2018 Date plug back, deepening, recompletion, or drilling operation ended: 09/05/2018
Number of producing wells on this lease in this field (reservoir) including this well: 1 Distance to nearest well in lease & reservoir (ft.): 1884.0
Total number of acres in lease: 961.74 Elevation (ft.): 2833 GR
Total depth TVD (ft.): 12097 Total depth MD (ft.): 23405
Plug back depth TVD (ft.): Plug back depth MD (ft.):
Was directional survey made other than inclination (Form W-12)? Yes Rotation time within surface casing (hours): 54.0
Is Cementing Affidavit (Form W-15) attached? Yes
Recompletion or reclass? No Multiple completion? No
Type(s) of electric or other log(s) run: Gamma Ray (MWD)
Electric Log Other Description:
Location of well, relative to nearest lease boundaries Off Lease : Yes
of lease on which this well is located: 1171.0 Feet from the North Line and
2232.0 Feet from the East Line of the
UL MAROON 0904-21 Lease.

FORMER FIELD (WITH RESERVOIR) & GAS ID OR OIL LEASE NO.

Field & Reservoir Gas ID or Oil Lease No. Well No. Prior Service Type

PACKET: N/A

W2:	N/A		
FOR NEW DRILL OR RE-ENTRY, SURFACE CASING DEPTH DETERMINED BY:			
GAU Groundwater Protection Determination		Depth (ft.): 950.0	Date: 07/08/2016
SWR 13 Exception		Depth (ft.):	

INITIAL POTENTIAL TEST DATA FOR NEW COMPLETION OR RECOMPLETION		
Date of test: 01/05/2019		Production method: Flowing
Number of hours tested: 24		Choke size: 24
Was swab used during this test?	No	Oil produced prior to test: 21760.00
PRODUCTION DURING TEST PERIOD:		
Oil (BBLS): 1113.00		Gas (MCF): 1031
Gas - Oil Ratio: 926		Flowing Tubing Pressure: 2186.00
Water (BBLS): 2583		
CALCULATED 24-HOUR RATE		
Oil (BBLS): 1113.0		Gas (MCF): 1031
Oil Gravity - API - 60.:	40.1	Casing Pressure: 0.00
Water (BBLS): 2583		

CASING RECORD											
Row	Type of Casing	Casing Size (in.)	Hole Size (in.)	Setting Depth (ft.)	Multi - Stage Depth (ft.)	Multi - Stage Shoe Depth (ft.)	Cement Class	Cement Amount (sacks)	Slurry Volume (cu. ft.)	Top of Cement (ft.)	TOC Determined By
1	Surface	13 3/8	17 1/2	1052			C	1370	2326.0	SURF ACE	Circulated to Surface
2	Intermediate	10 3/4	12 1/4	5146			C	1170	2581.0	SURF ACE	Circulated to Surface
3	Intermediate	7 5/8	9 7/8	11370			C & H	610	1588.0	5328	Calculation
4	Intermediate	7 5/8	9 7/8	11370	5328		C	520	1201.0	667	Calculation

LINER RECORD									
Row	Liner Size (in.)	Hole Size (in.)	Liner Top (ft.)	Liner Bottom (ft.)	Cement Class	Cement Amount (sacks)	Slurry Volume (cu. ft.)	Top of Cement (ft.)	TOC Determined By
1	5 1/2	6 3/4	11117	23388	H	1135	1391.5	11117	Calculation
								7	

TUBING RECORD			
Row	Size (in.)	Depth Size (ft.)	Packer Depth (ft.)/Type
1	2 7/8	11500	11486 / AS1X

PRODUCING/INJECTION/DISPOSAL INTERVAL			
Row	Open hole?	From (ft.)	To (ft.)
1	No	L1 13000	23191.0

ACID, FRACTURE, CEMENT SQUEEZE, CAST IRON BRIDGE PLUG, RETAINER, ETC.			
Was hydraulic fracturing treatment performed?		Yes	
Is well equipped with a downhole actuation sleeve?		No	
If yes, actuation pressure (PSIG):			
Production casing test pressure (PSIG) prior to hydraulic fracturing treatment:		13070	
Actual maximum pressure (PSIG) during hydraulic fracturing:		12576	
Has the hydraulic fracturing fluid disclosure been reported to FracFocus disclosure registry (SWR29)?		Yes	
Row	Type of Operation	Amount and Kind of Material Used	Depth Interval (ft.)
1	Fracture	632,692 BBLS; 30,786,653 LBS PROPPANT	13000 23191

FORMATION RECORD					
Formations	Encountered	Depth TVD (ft.)	Depth MD (ft.)	Is formation isolated?	Remarks
RUSTLER - POSSIBLE FLOW; POSSIBLE USABLE QUALITY W	Yes	1554.0	1554.0	Yes	
COLBY-QUEEN	No			No	NOT PRESENT
YATES	No			No	NOT PRESENT
QUEEN-SEVEN RIVERS	No			No	NOT PRESENT
SAN ANDRES - HIGH FLOWS, H2S, CORROSIVE	No			No	NOT PRESENT
HOLT	No			No	NOT PRESENT
DELAWARE	Yes	5064.0	5069.0	Yes	
GLORIETA	No			No	NOT PRESENT
CLEARFORK	No			No	NOT PRESENT
WICHITA ALBANY	No			No	NOT PRESENT
BRUSHY CANYON	No			No	NOT PRESENT
CHERRY CANYON	Yes	5992.0	5996.0	Yes	
CANYON	No			No	NOT PRESENT
BONE SPRINGS	Yes	8887.0	8893.0	Yes	
MONTOYA	No			No	NOT PRESENT
WADDELL	No			No	NOT PRESENT
WOLFCAMP	Yes	11740.0	11781.0	Yes	
ATOKA	No			No	NOT PENETRATED
STRAWN	No			No	NOT PENETRATED
PENNSYLVANIAN	No			No	NOT PENETRATED
MISSISSIPPIAN	No			No	NOT PENETRATED
DEVONIAN	No			No	NOT PENETRATED
SILURIAN	No			No	NOT PENETRATED
FUSSELMAN	No			No	NOT PENETRATED
ELLENBURGER	No			No	NOT PENETRATED
Do the producing interval of this well produce H2S with a concentration in excess of 100 ppm (SWR 36)?					Yes
Is the completion being downhole commingled (SWR 10)?					No

REMARKS

RRC REMARKS
PUBLIC COMMENTS: [RRC Staff 2019-07-02 10:27:20.201] EDL=10150 feet, max acres=704, PHANTOM (WOLFCAMP) oil or gas well; take points: 13000-23191 feet
CASING RECORD : KOP @ 11401
TUBING RECORD:
PRODUCING/INJECTION/DISPOSAL INTERVAL :
ACID, FRACTURE, CEMENT SQUEEZE, CAST IRON BRIDGE PLUG, RETAINER, ETC. :
POTENTIAL TEST DATA: PLEASE NOTE LEASE NAME HAS BEEN CHANGED TO THE UL MAROON 0904-21 A 1H. AMENDED PERMIT ATTACHED.

OPERATOR'S CERTIFICATION	
Printed Name: Heather Dahlgren	Title: Felix Admin Services
Telephone No.: (720) 974-2069	Date Certified: 06/10/2019



RAILROAD COMMISSION OF TEXAS

1701 N. Congress
P.O. Box 12967
Austin, Texas 78701-2967

Form W-15

Rev. 08/2014

CEMENTING REPORT

Cementer: Fill in shaded areas.
Operator: Fill in other items.

OPERATOR INFORMATION

Operator Name:	FELIX ENERGY HOLDING	Operator P-5 No.:	265322
Cementer Name:	TRANS TEX CEMENTING SERVICES, LLC	Cementer P-5 No.:	864412

WELL INFORMATION

District No.:	08	County:	WINKLER
Well No.:	# 1H	API No.:	42-495-34108
Lease Name:	UL Maroon 0904-21	Drilling Permit No.:	838557
Field Name:	WOLF CAMP / Phantom	Lease No.:	
		Field No.:	71052900

I. CASING CEMENTING DATA

Type of Casing:	<input type="checkbox"/> Conductor	<input checked="" type="checkbox"/> Surface	<input type="checkbox"/> Intermediate	<input type="checkbox"/> Liner	<input type="checkbox"/> Production
Drilled hole size (in.):	17.5	Depth of drilled hole (ft.):	1068	Est. % wash-out or hole enlargement:	20
Size of casing in O.D. (in.):	13.375	Casing weight (lbs/ft) and grade:	54.5 355	No. of centralizers used:	8
Was cement circulated to ground surface (or bottom of cellar) outside casing? <input checked="" type="checkbox"/> YES <input type="checkbox"/> NO	If no for surface casing, explain in Remarks.		Setting depth shoe (ft.):	Top of liner (ft.):	
			1052		
Hrs. waiting on cement before drill-out:	29	Calculated top of cement (ft.):	0	Cementing date:	5/21/2018
				Setting depth liner (ft.):	

SLURRY

Slurry No.	No. of Sacks	Class	Additives	Volume (cu. ft.)	Height (ft.)
1	970	TRANS-TEX DIVERSE	SEE REMARKS	1794	2582
2	400	TRANS-TEX LITE "C"	SEE REMARKS	532	765
3					
Total	1370			2326	3347

II. CASING CEMENTING DATA

Type of casing:		<input type="checkbox"/> Surface	<input type="checkbox"/> Intermediate	<input type="checkbox"/> Production	<input type="checkbox"/> Tapered production	<input type="checkbox"/> Multi-stage cement sh	<input type="checkbox"/> Multiple parallel strings
Drilled hole size (in.):		Depth of drilled hole (ft.):			Est. % wash-out or hole enlargement:		
Size of casing in O.D. (in.):		Casing weight (lbs/ft) and grade:			No. of centralizers used:		
Tapered string drilled hole size (in.)				Tapered string depth of drilled hole (ft.)			
Upper:		Lower:		Upper:		Lower:	
Tapered string size of casing in O.D. (in.)		Tapered string casing weight(lbs/ft) and grade			Tapered string no. of centralizers used		
Upper:		Lower:		Upper:		Lower:	
Was cement circulated to ground surface (or bottom of cellar) outside casing?				YES	<input type="checkbox"/>	NO	<input type="checkbox"/>
Hrs. waiting on cement before drill-out:		Calculated top of cement (ft.):			Cementing date:		

SLURRY

Slurry No.	No. of Sacks	Class	Additives	Volume (cu. ft.)	Height (ft.)
1					
2					
3					
Total					

III. CASING CEMENTING DATA

Type of casing:	<input type="checkbox"/> Surface	<input type="checkbox"/> Intermediate	<input type="checkbox"/> Production	<input type="checkbox"/> Tapered production	<input type="checkbox"/> Multi-stage cement/DVT	<input type="checkbox"/> Multiple parallel strings
Drilled hole size (in.):	Depth of drilled hole (ft.):			Est. % wash-out or hole enlargement:		
Size of casing in O.D. (in.):	Casing weight (lbs/ft) and grade:			No. of centralizers used:		
Tapered string drilled hole size (in.)				Tapered string depth of drilled hole (ft.)		
Upper:		Lower:		Upper:		Lower:
Tapered string size of casing in O.D. (in.)		Tapered string casing weight(lbs/ft) and grade		Tapered string no. of centralizers used		
Upper:		Lower:		Upper:		Lower:
Was cement circulated to ground surface (or bottom of cellar) outside casing?				YES <input type="checkbox"/>		NO <input type="checkbox"/>
Setting depth shoe (ft.):						
Hrs. waiting on cement before drill-out:		Calculated top of cement (ft.):		Cementing date:		

SLURRY

Slurry No.	No. of Sacks	Class	Additives	Volume (cu. ft.)	Height (ft.)
1					
2					
3					
Total					

CEMENTING TO SQUEEZE, PLUG BACK OR PLUG AND ABANDON							
	PLUG #1	PLUG #2	PLUG #3	PLUG #4	PLUG #5	PLUG #6	PLUG #7
Cementing Date							
Size of hole or pipe (in.)							
Depth to bottom of tubing or drill pipe (ft.)							
Cement retainer setting depth (ft.)							
CIBP setting depth (ft.)							
Amount of cement on top of CIBP (ft.)							
Sacks of cement used							
Slurry volume pumped (cu. ft.)							
Calculated top of plug (ft.)							
Measured top of plug, if tagged (ft.)							
Slurry weight (lbs/gal)							
Class/type of cement							
Perforate and squeeze (YES/NO)							
REMARKS							
5%NaCl2, + 6%GEL, + 2%CFH-1, + 2# GILS, + 1/4# CELLOFLAKE							
1%CaCl2, + 1/4# CELLOFLAKE, + .2%CFH-1							
0							
CIRCULATE CEMENT TO SURFACE 116 BBLS OR 352 SKS							

CEMENTER'S CERTIFICATE: I declare under penalties prescribed in Sec. 91.143, Texas Natural Resources Code, that I am authorized to make this certification, that the cementing of casing and/or the placing of cement plugs in this well as shown in the report was performed by me or under my supervision, and that the cementing data and facts presented on both sides of this form are true, correct, and complete, to the best of my knowledge. This certification covers cementing data only.

Jose L Reynoso Cementer

Name and title of cementer's representative

TRANS TEX CEMENTING

Cementing Company

Jose L Reynoso
Signature

5019 BASIN ST

Address

MIDLAND, TX 79703

City, State, Zip Code

432-694-4900

Tel: Area Code Number

5/1/2018

Date: mo. day yr.

OPERATOR'S CERTIFICATE: I declare under penalties prescribed in Sec. 91.143, Texas Natural Resources Code, that I am authorized to make this certification, that I have knowledge of the well data and information presented in this report, and that data and facts presented on both sides of this form are true, correct, and complete, to the best of my knowledge. This certification covers all well data.

Jeremy Skates

Typed or printed name of operator's representative

Company Man
Title

[Signature]
Signature

8 Penny Ln Natchez, Ms 39120

Address

City, State, Zip Code

601-481-9178
Tel: Area Code Number

5-1-2018
Date: mo. day yr.

Instructions for Form W-15, Cementing Report

NOTICE: The Form W-15 must be submitted as an attachment to a Form G-1 (Gas Well Back Pressure Test, Completion or Recompletion Report, and Log), Form W-2 (Oil Well Potential Test, Completion or Recompletion Report, and Log), Form W-3 (Plugging Record), or Form W-4 (Application for Multiple Completion), any time cement is pumped in a wellbore.

A. What to file: An operator should file an original and one copy of the completed Form W-15 for each cementing company used on a well. The cementing of different casing strings on a well by one cementing company may be reported on one form. The Form W-15 should be filed with the Form W-3, Plugging Record, unless the Form W-3 is signed by the cementing company representative. When reporting dry holes, operators must complete Form W-15, in addition to Form W-3, to show any casing cemented in the hole.

B. How to file: An oil and gas completion report and Form W-15 may be filed online using the Commission's Online System

(<https://webapps.rrc.state.tx.us/security/login.do>) or a paper copy of the form may be mailed to the Commission in Austin (P.O. Box 12967, Austin, Texas 787112967).

C. Surface casing: An operator must set and cement sufficient surface casing to protect all usable-quality water strata, as defined by the Groundwater Advisory Unit in Austin. Sufficient cement shall be used to fill the annular space outside the casing from the shoe to the ground surface or to the bottom of the cellar. Before drilling a well, an operator must obtain a letter from the Groundwater Advisory Unit stating the protection depth. Surface casing should not be set deeper than 200 feet below the specified depth without prior approval from the Commission.

To plug and abandon a well, operators must use only cementers approved by the Commission's Director of Field Operations in accordance with SWR 14 ([http://info.sos.state.tx.us/pls/pub/readtac\\$ext.TacPage?sl=R&app=9&p_dir=&p_rloc=&p_tloc=&p_ploc=&pg=1&p_tac=&ti=16&pt=1&ch=3&rl=14](http://info.sos.state.tx.us/pls/pub/readtac$ext.TacPage?sl=R&app=9&p_dir=&p_rloc=&p_tloc=&p_ploc=&pg=1&p_tac=&ti=16&pt=1&ch=3&rl=14)). Cementing companies, service companies, or operators can qualify as approved cementers by demonstrating that they are able to mix and pump cement in compliance with Commission rules and regulations.

D. Estimated % wash-out: If the estimated % wash-out is less than 20% (or 30% along the Gulf Coast), provide supporting documentation such as a caliper log to show how the estimated % wash-out was obtained.

E. Multi-stage cement: An operator must report the multi-stage cement shoe in II. Casing Cementing Data section by selecting the type of casing and Multi-stage cement shoe. The operator must report the multi-stage cement tool in III. Casing Cementing Data section by selecting the type of casing and Multi-stage cement/DV tool.

F. Multiple parallel strings: An operator should file the Form W-15 as an attachment to the Form W-4, Application for Multiple Completion. An operator may be required to submit multiple Form W-15s to show all data for multiple parallel strings.

G. Slurry data: If cement job exceeds three slurries, continue the list of slurries in the Slurry table in the subsequent Casing Cementing Data box.



RAILROAD COMMISSION OF TEXAS

1701 N. Congress
P.O. Box 12967
Austin, Texas 78701-2967

Form W-15

Rev. 08/2014

CEMENTING REPORT

Cementer: Fill in shaded areas.
Operator: Fill in other items.

OPERATOR INFORMATION

Operator Name: FELIX ENERGY HOLDINGS II, LLC Operator P-5 No.: 265322
Cementer Name: TRANS TEX CEMENTING SERVICES, LLC Cementer P-5 No.: 864412

WELL INFORMATION

District No.: 08 County: WINKLER
Well No.: 1H API No.: 42-495-34108 Drilling Permit No.: 338557
Lease Name: UL MAROON 0904-21 Lease No.:
Field Name: Phantom (Wolfcamp) Field No.: 7052900

I. CASING CEMENTING DATA

Type of Casing: ☐ Conductor ☐ Surface ☒ Intermediate ☐ Liner ☐ Production
Drilled hole size (in.): 12.25 Depth of drilled hole (ft.): 5160 Est. % wash-out or hole enlargement: 20
Size of casing in O.D. (in.): 10.75 Casing weight (lbs/ft) and grade: 45.5# J-55 No. of centralizers used: 39
Was cement circulated to ground surface (or bottom of cellar) outside casing? ☒ YES ☐ NO If no for surface casing, explain in Remarks.
Setting depth shoe (ft.): 5146 Top of liner (ft.):
Setting depth liner (ft.):
Hrs. waiting on cement before drill-out: 1.44 Calculated top of cement (ft.): SURFACE Cementing date: 5/7/2018

SLURRY

Slurry No.	No. of Sacks	Class	Additives	Volume (cu. ft.)	Height (ft.)
1	940	C	REMARKS	2275	12089
2	230	C	REMARKS	306	1626
3					
Total	1170			2581	13715

II. CASING CEMENTING DATA

Type of casing: ☐ Surface ☐ Intermediate ☐ Production ☐ Tapered production ☐ Multi-stage cement sh ☐ Multiple parallel strings
Drilled hole size (in.): Depth of drilled hole (ft.): Est. % wash-out or hole enlargement:
Size of casing in O.D. (in.): Casing weight (lbs/ft) and grade: No. of centralizers used:
Tapered string drilled hole size (in.) Tapered string depth of drilled hole (ft.)
Upper: Lower: Upper: Lower:
Tapered string size of casing in O.D. (in.) Tapered string casing weight (lbs/ft) and grade Tapered string no. of centralizers used
Upper: Lower: Upper: Lower: Upper: Lower:
Was cement circulated to ground surface (or bottom of cellar) outside casing? YES ☐ NO ☐
Setting depth shoe (ft.):
Hrs. waiting on cement before drill-out: Calculated top of cement (ft.): Cementing date:

SLURRY

Slurry No.	No. of Sacks	Class	Additives	Volume (cu. ft.)	Height (ft.)
1					
2					
3					
Total					

III. CASING CEMENTING DATA

Type of casing: ☐ Surface ☐ Intermediate ☐ Production ☐ Tapered production ☐ Multi-stage cement/DV ☐ Multiple parallel strings
Drilled hole size (in.): Depth of drilled hole (ft.): Est. % wash-out or hole enlargement:
Size of casing in O.D. (in.): Casing weight (lbs/ft) and grade: No. of centralizers used:
Tapered string drilled hole size (in.) Tapered string depth of drilled hole (ft.)
Upper: Lower: Upper: Lower:
Tapered string size of casing in O.D. (in.) Tapered string casing weight (lbs/ft) and grade Tapered string no. of centralizers used
Upper: Lower: Upper: Lower: Upper: Lower:
Was cement circulated to ground surface (or bottom of cellar) outside casing? YES ☐ NO ☐
Setting depth shoe (ft.):
Hrs. waiting on cement before drill-out: Calculated top of cement (ft.): Cementing date:

SLURRY

Slurry No.	No. of Sacks	Class	Additives	Volume (cu. ft.)	Height (ft.)
1					
2					
3					
Total					

CEMENTING TO SQUEEZE, PLUG BACK OR PLUG AND ABANDON							
	PLUG #1	PLUG #2	PLUG #3	PLUG #4	PLUG #5	PLUG #6	PLUG #7
Cementing Date							
Size of hole or pipe (in.)							
Depth to bottom of tubing or drill pipe (ft.)							
Cement retainer setting depth (ft.)							
CIBP setting depth (ft.)							
Amount of cement on top of CIBP (ft.)							
Sacks of cement used							
Slurry volume pumped (cu. ft.)							
Calculated top of plug (ft.)							
Measured top of plug, if tagged (ft.)							
Slurry weight (lbs/gal)							
Class/type of cement							
Perforate and squeeze (YES/NO)							
REMARKS							
10% GEL, 3% SALT, .25# CF, .3% CFL-1, .2% CR-1, 2# GIL							
.2% CR-1, .3% CFR-1, .3% CFL-1, .25# CF							
0							
CIRCULATED 140 BBL 325 SKS CMT TO SURFACE							

CEMENTER'S CERTIFICATE: I declare under penalties prescribed in Sec. 91.143, Texas Natural Resources Code, that I am authorized to make this certification, that the cementing of casing and/or the placing of cement plugs in this well as shown in the report was performed by me or under my supervision, and that the cementing data and facts presented on both sides of this form are true, correct, and complete, to the best of my knowledge. This certification covers cementing data only.

Jeremy Dickman

Name and title of cementer's representative

TRANS TEX CEMENTING
Cementing Company

Signature

5019 BASIN ST

Address

MIDLAND, TX 79703

City, State, Zip Code

432-694-4900

Tel: Area Code

Number

5/7/2018

Date: mo. day yr.

OPERATOR'S CERTIFICATE: I declare under penalties prescribed in Sec. 91.143, Texas Natural Resources Code, that I am authorized to make this certification, that I have knowledge of the well data and information presented in this report, and that data and facts presented on both sides of this form are true, correct, and complete, to the best of my knowledge. This certification covers all well data.

Jeremy Skates

Typed or printed name of operator's representative

Company Man

Title

Signature

8 Penny LN

Address

Natchez, Ms. 39120

City, State, Zip Code

601-431-9178

Tel: Area Code

Number

5/7/18

Date: mo. day yr.

Instructions for Form W-15, Cementing Report

NOTICE: The Form W-15 must be submitted as an attachment to a Form G-1 (Gas Well Back Pressure Test, Completion or Recompletion Report, and Log), Form W-2 (Oil Well Potential Test, Completion or Recompletion Report, and Log), Form W-3 (Plugging Record), or Form W-4 (Application for Multiple Completion), any time cement is pumped in a wellbore.

A. WHAT TO FILE: An operator should file an original and one copy of the completed Form W-15 for each cementing company used on a well. The cementing of different casing strings on a well by one cementing company should be filed with the Form W-3, Plugging Record, unless the Form W-3 is signed by the cementing company representative. When reporting dry holes, operators must complete Form W-15, in addition to Form W-3, to show any casing cemented in the hole.

B. How to file: An oil and gas completion report and Form W-

(<https://webapps.nrc.state.tx.us/security/login.do>) or a paper copy of the form may be mailed to the Commission in Austin (P.O. Box 12967, Austin, Texas 78712967).

C. Surface casing: An operator must set and cement sufficient surface casing to protect all usable-quality water strata, as defined by the Groundwater Advisory Unit in Austin. Sufficient cement shall be used to fill the annular space outside the casing from the shoe to the ground surface or to the bottom of the cellar. Before drilling a well, an operator must obtain a letter from the Groundwater Advisory Unit stating the protection depth. Surface casing should not be set deeper than 200 feet below the specified depth without prior approval from the Commission.

To plug and abandon a well, operators must use only cements approved by the Commission's Director of Field Operations in accordance with SWR 14 (http://info.sos.state.tx.us/pls/pub/readac5ext.TecPage?si=R&app=9&p_dir=&p_loc=&p_loc=&p_loc=&pg=1&p_ta=&tl=16&pt=1&ch=9&rl=14). Cementing companies, service companies, or operators can qualify as approved cementers by demonstrating that they are able to mix and pump cement in compliance with Commission rules and regulations.

D. ESTIMATED % WASH-OUT: If the estimated % wash-out is less than 20% (or 30% during the drill wash), provide supporting documentation such as a caliper log to show how the estimated % wash-out was

E. Multi-stage cement: An operator must report the multi-stage cement shoe in II. Casing Cementing Data section by selecting the type of casing and Multi-stage cement shoe. The operator must report the multi-stage cement tool in III. Casing Cementing Data section by selecting the type of casing and Multi-stage cement/DV tool.

F. Multiple parallel strings: An operator should file the Form W-15 as an attachment to the Form W-4,

Application for Multiple Completion. An operator may be required to submit multiple Form W-15s to

G. Slurry data: If cement job exceeds three slurries, continue the list of slurries in the Slurry table in the



RAILROAD COMMISSION OF TEXAS

1701 N. Congress

P.O. Box 12967

Austin, Texas 78701-2967

Form W-15

Rev. 08/2014

CEMENTING REPORT

Cementer: Fill in shaded areas.
Operator: Fill in other items.

OPERATOR INFORMATION

Operator Name: Felix Energy

Operator P-5 No.: 265322

Cementer Name: HALLIBURTON

Cementer P-5 No.: 347151

WELL INFORMATION

District No.: 08

County: Winkler

Well No.: 1H

API No.: 42-495-34108

Drilling Permit No.: 838557

Lease Name: Ut Maroon 0904-21

Lease No.:

Field Name: Wolfcamp - Phantom

Field No.: 71052900

I. CASING CEMENTING DATA

Type of casing: ☐ Conductor ☐ Surface ☒ Intermediate ☐ Liner ☐ Production

Drilled hole size (in.): 9.875

Depth of drilled hole (ft.): 11385

Est. % wash-out or hole enlargement: .

Size of casing in O.D. (in.): 7.625

Casing weight (lbs/ft) and grade: 29.7 HCL80

No. of centralizers used:

Was cement circulated to ground surface (or bottom of cellar) outside casing? ☐ YES ☐ NO If no for surface casing, explain in Remarks.

Setting depth shoe (ft.):

Top of liner (ft.):

Setting depth liner (ft.):

Hrs. waiting on cement before drill-out:

Calculated top of cement (ft.):

Cementing date: 7/14/18

SLURRY

Slurry No.	No. of Sacks	Class	Additives	Volume (cu. ft.)	Height (ft.)
1					
2					
3					
Total	0			0	0

II. CASING CEMENTING DATA

Type of casing: ☐ Surface ☐ Intermediate ☐ Production ☐ Tapered production ☒ Multi-stage cement shoe ☐ Multiple parallel strings

Drilled hole size (in.): 9.875

Depth of drilled hole (ft.): 11385

Est. % wash-out or hole enlargement: 20

Size of casing in O.D. (in.): 7.625

Casing weight (lbs/ft) and grade: 29.7 HCL80

No. of centralizers used: 83

Tapered string drilled hole size (in.)

Tapered string depth of drilled hole (ft.)

Upper: Lower:

Upper: Lower:

Tapered string size of casing in O.D. (in.)

Tapered string casing weight (lbs/ft) and grade

Tapered string no. of centralizers used

Upper: Lower:

Upper: Lower:

Upper: Lower:

Was cement circulated to ground surface (or bottom of cellar) outside casing? ☐ YES ☒ NO

Setting depth shoe (ft.): 11370

Hrs. waiting on cement before drill-out: NA

Calculated top of cement (ft.): 5328

Cementing date: 7/14/18

SLURRY

Slurry No.	No. of Sacks	Class	Additives	Volume (cu. ft.)	Height (ft.)
1	535	C	3lbm Kol-Seal/.125lbm Poly-E-Flake	1498	8035
2	75	H	.6% Helad-9/.10% HR-601	90	671
3					
Total	610			1588	8706

III. CASING CEMENTING DATA

Type of casing: ☐ Surface ☐ Intermediate ☐ Production ☐ Tapered production ☒ Multi-stage cement/DV tool ☐ Multiple parallel strings

Drilled hole size (in.): 9.875

Depth of drilled hole (ft.): 11385

Est. % wash-out or hole enlargement: 20

Size of casing in O.D. (in.): 7.625

Casing weight (lbs/ft) and grade: 29.7 HCL80

No. of centralizers used: 83

Tapered string drilled hole size (in.)

Tapered string depth of drilled hole (ft.)

Upper: Lower:

Upper: Lower:

Tapered string size of casing in O.D. (in.)

Tapered string casing weight (lbs/ft) and grade

Tapered string no. of centralizers used

Upper: Lower:

Upper: Lower:

Upper: Lower:

Was cement circulated to ground surface (or bottom of cellar) outside casing? ☐ YES ☒ NO

Setting depth tool (ft.): 5328

Hrs. waiting on cement before drill-out: NA

Calculated top of cement (ft.): 667

Cementing date: 7/14/18

SLURRY

Slurry No.	No. of Sacks	Class	Additives	Volume (cu. ft.)	Height (ft.)
1	455	C	8 lbm Salt/.25lbm D-Air 5000	1114.75	4955.48
2	65	C	.2% HR-800	86.45	371.52
3					
Total	520			1201.2	5327

CEMENTING TO SQUEEZE, PLUG BACK OR PLUG AND ABANDON							
	PLUG #1	PLUG #2	PLUG #3	PLUG #4	PLUG #5	PLUG #6	PLUG #7
Cementing Date							
Size of hole or pipe (in.)							
Depth to bottom of tubing or drill pipe (ft.)							
Cement retainer setting depth (ft.)							
CIBP setting depth (ft.)							
Amount of cement on top of CIBP (ft.)							
Sacks of cement used							
Slurry volume pumped (cu. ft.)							
Calculated top of plug (ft.)							
Measured top of plug, if tagged (ft.)							
Slurry weight (lbs/gal)							
Class/type of cement							
Perforate and squeeze (YES/NO)							
REMARKS							

CEMENTER'S CERTIFICATE: I declare under penalties prescribed in Sec. 91.143, Texas Natural Resources Code, that I am authorized to make this certification, that the cementing of casing and/or the placing of cement plugs in this well as shown in the report was performed by me or under my supervision, and that the cementing data and facts presented on both sides of this form are true, correct, and complete, to the best of my knowledge. This certification covers cementing data only.

Robert Billman/ Service Supervisor

Halliburton

Name and title of cementer's representative

Cementing Company

Robert Billman
Signature

2311 S. First St.

Artesia, NM, 88210

575-392-0700

7/15/18

Address

City, State, Zip Code

Tel: Area Code

Number

Date: mo. day yr.

OPERATOR'S CERTIFICATE: I declare under penalties prescribed in Sec. 91.143, Texas Natural Resources Code, that I am authorized to make this certification, that I have knowledge of the well data and information presented in this report, and that data and facts presented on both sides of this form are true, correct, and complete, to the best of my knowledge. This certification covers all well data.

Hugh McGraw
Typed or printed name of operator's representative

Title

Site Supervisor

Signature

Address

City, State, Zip Code

Tel: Area Code

Number

Date: mo. day yr.

1530 16th Street Suite 500 Denver CO 80202 432 8486857 7/15/2018

Instructions for Form W-15, Cementing Report

NOTICE: The Form W-15 must be submitted as an attachment to a Form G-1 (Gas Well Back Pressure Test, Completion or Recompletion Report, and Log), Form W-2 (Oil Well Potential Test, Completion or Recompletion Report, and Log), Form W-3 (Plugging Record), or Form W-4 (Application for Multiple Completion), any time cement is pumped in a wellbore.

- What to file:** An operator should file an original and one copy of the completed Form W-15 for each cementing company used on a well. The cementing of different casing strings on a well by one cementing company may be reported on one form.
The Form W-15 should be filed with the Form W-3, Plugging Record, unless the Form W-3 is signed by the cementing company representative. When reporting dry holes, operators must complete Form W-15, in addition to Form W-3, to show any casing cemented in the hole.
- How to file:** An oil and gas completion report and Form W-15 may be filed online using the Commission's Online System (<https://webapps.rrc.state.tx.us/security/login.do>) or a paper copy of the form may be mailed to the Commission in Austin (P.O. Box 12967, Austin, Texas 78711-2967).
- Surface casing:** An operator must set and cement sufficient surface casing to protect all usable-quality water strata, as defined by the Groundwater Advisory Unit in Austin. Sufficient cement shall be used to fill the annular space outside the casing from the shoe to the ground surface or to the bottom of the cellar. Before drilling a well, an operator must obtain a letter from the Groundwater Advisory Unit stating the protection depth. Surface casing should not be set deeper than 200 feet below the specified depth without prior approval from the Commission.
To plug and abandon a well, operators must use only cementers approved by the Commission's Director of Field Operations in accordance with SWR 14 ([http://info.sos.state.tx.us/pls/pub/readtac\\$ext.TacPage?sl=R&app=9&p_dir=&p_rloc=&p_tloc=&p_ploc=&pg=1&p_tac=&ti=16&pt=1&ch=3&rl=14](http://info.sos.state.tx.us/pls/pub/readtac$ext.TacPage?sl=R&app=9&p_dir=&p_rloc=&p_tloc=&p_ploc=&pg=1&p_tac=&ti=16&pt=1&ch=3&rl=14)). Cementing companies, service companies, or operators can qualify as approved cementers by demonstrating that they are able to mix and pump cement in compliance with Commission rules and regulations.
- Estimated % wash-out:** If the estimated % wash-out is less than 20% (or 30% along the Gulf Coast), provide supporting documentation such as a caliper log to show how the estimated % wash-out was obtained.
- Multi-stage cement:** An operator must report the multi-stage cement shoe in II. Casing Cementing Data section by selecting the type of casing and Multi-stage cement shoe. The operator must report the multi-stage cement tool in III. Casing Cementing Data section by selecting the type of casing and Multi-stage cement/DV tool.
- Multiple parallel strings:** An operator should file the Form W-15 as an attachment to the Form W-4, Application for Multiple Completion. An operator may be required to submit multiple Form W-15s to show all data for multiple parallel strings.
- Slurry data:** If cement job exceeds three slurries, continue the list of slurries in the Slurry table in the subsequent Casing Cementing Data box.



RAILROAD COMMISSION OF TEXAS

1701 N. Congress
P.O. Box 12967
Austin, Texas 78701-2967

Form W-15

Rev. 08/2014

CEMENTING REPORT

Cementer: Fill in shaded areas.
Operator: Fill in other items.

I. OPERATOR INFORMATION					
Operator Name: FELIX ENERGY			Operator P-5 No.: 265322		
Cementer Name: HALLIBURTON ENERGY SERVICES			Cementer P-5 No.: 347151		

II. WELL INFORMATION					
District No.: 08		County: WINKLER			
Well No.: 1H		API No.: 4249534108		Drilling Permit No.: 838557	
Lease Name: UL MAROON 0904-21		Lease No.:			
Field Name: Phantom (Wolfcamp)		Field No.: 71052900			

III. CASING CEMENTING DATA					
Type of casing: <input type="checkbox"/> Conductor <input type="checkbox"/> Surface <input type="checkbox"/> Intermediate <input checked="" type="checkbox"/> Liner <input type="checkbox"/> Production					
Drilled hole size (in.): 6.75		Depth of drilled hole (ft.): 23,405		Est. % wash-out or hole enlargement: 20	
Size of casing in O.D. (in.): 5.5		Casing weight (lbs/ft) and grade: 23/P110		No. of centralizers used: 0	
Was cement circulated to ground surface (or bottom of cellar) outside casing? <input type="checkbox"/> YES <input checked="" type="checkbox"/> NO If no for surface casing, explain in Remarks.			Setting depth shoe (ft.): 23,388		Top of liner (ft.): 11,117
			Setting depth liner (ft.): 23,388		
Hrs. waiting on cement before drill-out: N/A		Calculated top of cement (ft.): 11,117		Cementing date: 8/30/18	

SLURRY					
Slurry No.	No. of Sacks	Class	Additives	Volume (cu. ft.)	Height (ft.)
1	1135	VERSACEM-H	SEE REMARKS	1391.51	16664.79
2					
3					
Total	1135			1391.51	16664.79

IV. CASING CEMENTING DATA					
Type of casing: <input type="checkbox"/> Surface <input type="checkbox"/> Intermediate <input type="checkbox"/> Production <input type="checkbox"/> Tapered production <input type="checkbox"/> Multi-stage cement shoe <input type="checkbox"/> Multiple parallel strings					
Drilled hole size (in.):		Depth of drilled hole (ft.):		Est. % wash-out or hole enlargement:	
Size of casing in O.D. (in.):		Casing weight (lbs/ft) and grade:		No. of centralizers used:	
Tapered string drilled hole size (in.)		Tapered string depth of drilled hole (ft.)			
Upper:	Lower:	Upper:		Lower:	
Tapered string size of casing in O.D. (in.)		Tapered string casing weight (lbs/ft) and grade		Tapered string no. of centralizers used	
Upper:	Lower:	Upper:		Lower:	
Was cement circulated to ground surface (or bottom of cellar) outside casing? <input type="checkbox"/> YES <input type="checkbox"/> NO			Setting depth shoe (ft.):		
Hrs. waiting on cement before drill-out:		Calculated top of cement (ft.):		Cementing date:	

SLURRY					
Slurry No.	No. of Sacks	Class	Additives	Volume (cu. ft.)	Height (ft.)
1					
2					
3					
Total	0			0	0

V. CASING CEMENTING DATA					
Type of casing: <input type="checkbox"/> Surface <input type="checkbox"/> Intermediate <input type="checkbox"/> Production <input type="checkbox"/> Tapered production <input type="checkbox"/> Multi-stage cement/DV tool <input type="checkbox"/> Multiple parallel strings					
Drilled hole size (in.):		Depth of drilled hole (ft.):		Est. % wash-out or hole enlargement:	
Size of casing in O.D. (in.):		Casing weight (lbs/ft) and grade:		No. of centralizers used:	
Tapered string drilled hole size (in.)		Tapered string depth of drilled hole (ft.)			
Upper:	Lower:	Upper:		Lower:	
Tapered string size of casing in O.D. (in.)		Tapered string casing weight (lbs/ft) and grade		Tapered string no. of centralizers used	
Upper:	Lower:	Upper:		Lower:	
Was cement circulated to ground surface (or bottom of cellar) outside casing? <input type="checkbox"/> YES <input type="checkbox"/> NO			Setting depth tool (ft.):		
Hrs. waiting on cement before drill-out:		Calculated top of cement (ft.):		Cementing date:	

SLURRY					
Slurry No.	No. of Sacks	Class	Additives	Volume (cu. ft.)	Height (ft.)
1					
2					
3					
Total	0			0	0

CEMENTING TO SQUEEZE PLUG BACK OR PLUG AND ABANDON							
	PLUG #1	PLUG #2	PLUG #3	PLUG #4	PLUG #5	PLUG #6	PLUG #7
Cementing Date							
Size of hole or pipe (in.)							
Depth to bottom of tubing or drill pipe (ft.)							
Cement retainer setting depth (ft.)							
CIBP setting depth (ft.)							
Amount of cement on top of CIBP (ft.)							
Sacks of cement used							
Slurry volume pumped (cu. ft.)							
Calculated top of plug (ft.)							
Measured top of plug, if tagged (ft.)							
Slurry weight (lbs/gal)							
Class/type of cement							
Perforate and squeeze (YES/NO)							

REMARKS

SLURRY HAS .2850% HR-601, .40% HALAD(R)-344, .25 LBM D-AIR 5000

CEMENTER'S CERTIFICATE: I declare under penalties prescribed in Sec. 91.143, Texas Natural Resources Code, that I am authorized to make this certification, that the cementing of casing and/or the placing of cement plugs in this well as shown in the report was performed by me or under my supervision, and that the cementing data and facts presented on both sides of this form are true, correct, and complete, to the best of my knowledge. This certification covers cementing data only.

MARIO RODRIGUEZ SERVICE SUPERVISOR III

Halliburton

Name and title of cementer's representative

Cementing Company

Signature

6155 W. Murphy St.

Odessa, TX, 79763

432-571-8600

8/30/18

Address

City, State, Zip Code

Tel: Area Code

Number

Date: mo. day yr.

OPERATOR'S CERTIFICATE: I declare under penalties prescribed in Sec. 91.143, Texas Natural Resources Code, that I am authorized to make this certification, that I have knowledge of the well data and information presented in this report, and that data and facts presented on both sides of this form are true, correct, and complete, to the best of my knowledge. This certification covers all well data.

Typed or printed name of operator's representative

Title

Signature

1530 16th St #500 Denver, CO 80202

720-974-2054

08/30/2018

Address

City, State, Zip Code

Tel: Area Code

Number

Date: mo. day yr.

Instructions for Form W-15, Cementing Report

NOTICE: The Form W-15 must be submitted as an attachment to a Form G-1 (Gas Well Back Pressure Test, Completion or Recompletion Report, and Log), Form W-2 (Oil Well Potential Test, Completion or Recompletion Report, and Log), Form W-3 (Plugging Record), or Form W-4 (Application for Multiple Completion), any time cement is pumped in a wellbore.

- What to file:** An operator should file an original and one copy of the completed Form W-15 for each cementing company used on a well. The cementing of different casing strings on a well by one cementing company may be reported on one form.
The Form W-15 should be filed with the Form W-3, Plugging Record, unless the Form W-3 is signed by the cementing company representative. When reporting dry holes, operators must complete Form W-15, in addition to Form W-3, to show any casing cemented in the hole.
- How to file:** An oil and gas completion report and Form W-15 may be filed online using the Commission's Online System (<https://webapps.rrc.state.tx.us/security/login.do>) or a paper copy of the form may be mailed to the Commission in Austin (P.O. Box 12967, Austin, Texas 78711-2967).
- Surface casing:** An operator must set and cement sufficient surface casing to protect all usable-quality water strata, as defined by the Groundwater Advisory Unit in Austin. Sufficient cement shall be used to fill the annular space outside the casing from the shoe to the ground surface or to the bottom of the cellar. Before drilling a well, an operator must obtain a letter from the Groundwater Advisory Unit stating the protection depth. Surface casing should not be set deeper than 200 feet below the specified depth without prior approval from the Commission.
To plug and abandon a well, operators must use only cementers approved by the Commission's Director of Field Operations in accordance with SWR 14 ([http://info.sos.state.tx.us/pls/pub/readtac\\$ext.TacPage?si=R&app=9&p_dir=&p_rloc=&p_tloc=&p_ploc=&pg=1&p_tac=&ti=16&pt=1&ch=3&rl=14](http://info.sos.state.tx.us/pls/pub/readtac$ext.TacPage?si=R&app=9&p_dir=&p_rloc=&p_tloc=&p_ploc=&pg=1&p_tac=&ti=16&pt=1&ch=3&rl=14)). Cementing companies, service companies, or operators can qualify as approved cementers by demonstrating that they are able to mix and pump cement in compliance with Commission rules and regulations.
- Estimated % wash-out:** If the estimated % wash-out is less than 20% (or 30% along the Gulf Coast), provide supporting documentation such as a caliper log to show how the estimated % wash-out was obtained.
- Multi-stage cement:** An operator must report the multi-stage cement shoe in II. Casing Cementing Data section by selecting the type of casing and Multi-stage cement shoe. The operator must report the multi-stage cement tool in III. Casing Cementing Data section by selecting the type of casing and Multi-stage cement/DV tool.
- Multiple parallel strings:** An operator should file the Form W-15 as an attachment to the Form W-4, Application for Multiple Completion. An operator may be required to submit multiple Form W-15s to show all data for multiple parallel strings.
- Slurry data:** If cement job exceeds three slurries, continue the list of slurries in the Slurry table in the subsequent Casing Cementing Data box.

Tracking No.: 212680

This facsimile L-1 was generated electronically from data submitted to the RRC.

Instructions

When to File Form L-1:

- with Forms G-1, W-2, and GT-1 for new and deepened gas, oil, and geothermal wells
- with Form W-3 for plugged dry holes
- when sending in a log which was held under a request for confidentiality and the period for confidentiality has not yet expired.

When is Form L-1 NOT required:

- with Forms W-2, G-1, and GT-1 filed for injection wells, disposal wells, water supply wells, service wells, re-test wells, re-classifications, and plugbacks of oil, gas or geothermal wells
- with Form W-3 for plugging of other than a dry hole

Where to File Form L-1:

- with the appropriate Commission district office

Filling out Form L-1:

- Section I and the signature section must be filled out for all wells
- complete only the appropriate part of Section II

Type of log required:

- any wireline survey run for the purpose of obtaining lithology, porosity, or resistivity information
- no more than one such log is required but it must be of the subject well
- if such log is NOT run on the subject well, do NOT substitute any other type of log; just select Section II, Part A below

SECTION I. IDENTIFICATION

Operator Name: FELIX ENERGY HOLDINGS II, LLC	District No. 08	Completion Date: 11/25/2018
Field Name PHANTOM (WOLFCAMP)	Drilling Permit No. 838557	
Lease Name UL MAROON 0904-21 A	Lease/ID No. 51806	Well No. 1H
County WINKLER	API No. 42- 495-34108	

SECTION II. LOG STATUS (Complete either A or B)

☐ A. BASIC ELECTRIC LOG NOT RUN

☒ B. BASIC ELECTRIC LOG RUN. (Select one)

- ☒ 1. Confidentiality is requested and a copy of the header for each log that has been run on the well is attached.
- ☐ 2. Confidentiality already granted on basic electric log covering this interval (applicable to deepened wells only).
- ☐ 3. Basic electric log covering this interval already on file with Commission (applicable to deepened wells only).
- ☐ 4. Log attached to (select one):

☐ (a) Form L-1 (this form). If the company/lease name on log is different from that shown in Section I, please enter name on log here: _____

Check here if attached log is being submitted after being held confidential. ☐

☐ (b) Form P-7, Application for Discovery Allowable and New Field Designation.

☐ (c) Form W-4, Application for Multiple Completion:

Lease or ID No(s). _____

Well No(s). _____

Heather Dahlgren

Signature

FELIX ENERGY HOLDINGS II, LLC

Name (print)

Felix Admin Services

Title

(720) 974-2069

Phone

04/22/2019

Date

-FOR RAILROAD COMMISSION USE ONLY-

SlimPulse Gamma Ray
1in/100ft Measured Depth
Recorded Mode, Composite Log

Schlumberger

Company: FELIX ENERGY HOLDINGS II, LLC

Well: UL MAROON 0904-21 1H
Field: Two Georges (Bone Spring)
County: Winkler
State: Texas
Country: USA

Section: APIN: 42-495-34108
Township: Rig Name: Sidewinder 221
Range: Rig Type: Land Rig - Top Drive

FL: NAD27 Texas State Plane, Central Zone, US Feet
FL1: Northing: 766867.240 ftUS
FL2: Easting: 1098664.190 ftUS



Acquisition Dates:	12-Aug-2018 -- 24-Aug-2018	Other Services: Directional Drilling Direction and Inclination (Surveys)
Log Interval:	5106.00(ft) -- 23404.00(ft)	
Index Types:	Measured Depth	
Index Scales:	1:1200 1" / 100'	
Depth Source:	Driller's Depth	
Depth Sensor:	PASON	
Print Type:	Final	
Spud Date:	30-Jun-2018	



Disclaimer

THE USE OF AND RELIANCE UPON THIS RECORDED-DATA BY THE HEREIN NAMED COMPANY (AND ANY OF ITS AFFILIATES, PARTNERS, REPRESENTATIVES, AGENTS, CONSULTANTS AND EMPLOYEES) IS SUBJECT TO THE TERMS AND CONDITIONS AGREED UPON BETWEEN SCHLUMBERGER AND THE COMPANY, INCLUDING: (a) RESTRICTIONS ON USE OF THE RECORDED-DATA; (b) DISCLAIMERS AND WAIVERS OF WARRANTIES AND REPRESENTATIONS REGARDING COMPANY'S USE AND RELIANCE UPON THE RECORDED-DATA; AND (c) CUSTOMER'S FULL AND SOLE RESPONSIBILITY FOR ANY INFERENCE DRAWN OR DECISION MADE IN CONNECTION WITH THE USE OF THIS RECORDED-DATA.

Contents

1. Header
2. Disclaimer
3. Contents

FORM H-9
12/12/77

1. Operator Felix Energy Holdings II, LLC		2. Operator Number (See Instruction 13) 265322		IN TRIPLICATE
4. Street or P. O. Box No. 1530 16th Street, Suite 500		5. City Denver		6. State CO
8. Name of Lease, Facility or Operation UL Maroon 0904-21		9. Field or Area Name Two Georges (Bone Spring)		7. Zip Code 80202
11. General Operation Type – Circle One: <div style="display: flex; justify-content: space-between;"> <div style="width: 45%;"> A - Oil Field Production C - Pipeline or Gathering Sys. <input checked="" type="radio"/> E - Drilling or Workover G - Combination (explain) </div> <div style="width: 45%;"> B - Gas Field Production D - Gasoline Plant F - Sweetening Unit H - Other (explain) </div> </div>		Other Explanation H2S safety equipment on location while drilling		
12. RRC ID# of Operation(s) to be Covered by This Certificate		13. Hydrogen Sulfide Concentration 500 PPM		14. Maximum Escape Volume 1000 MCF/Day
Type ID Code (See Instruction 12)		15. 100 PPM Radius of Exposure (ROE) 65 Ft.		16. 500 PPM Radius of Exposure (ROE) 30 Ft.
Indicate if Filing for Storage Facility Only YES NO		17. Operation is Existing <input type="checkbox"/> New <input checked="" type="checkbox"/>		18. Modification Resulting in Certificate Change Yes <input type="checkbox"/> No <input checked="" type="checkbox"/>
838557	5	<input checked="" type="checkbox"/>	19. Workover or Drilling Well with 100 PPM ROE Greater than 3000' feet on Rule 36 Certified Well/Lease Yes <input type="checkbox"/> No <input checked="" type="checkbox"/>	
838561	5	<input checked="" type="checkbox"/>	20. Previous Certificate Number if Available (For Amended Certificates)	
838564	5	<input checked="" type="checkbox"/>	21. The 100 PPM ROE includes any part of a public area except a public road Yes <input type="checkbox"/> No <input checked="" type="checkbox"/>	
838568	5	<input checked="" type="checkbox"/>	22. The 500 PPM ROE includes any part of a public road Yes <input type="checkbox"/> No <input checked="" type="checkbox"/>	
			23. Injection of fluid containing Hydrogen Sulfide (See Instruction 14) Yes <input type="checkbox"/> No <input checked="" type="checkbox"/>	
			24. Date (or Depth) of Compliance with all applicable provisions of Rule 36 04/09/18 Mo Day Year Depth of Compliance for Drilling Operation 1000 Ft. from Surface	
25. Contingency Plan Location of Plan (See Instruction 15)			Has been prepared Yes <input type="checkbox"/> No <input checked="" type="checkbox"/>	
26. Location of data used to prepare this certificate (See Instruction 15) Felix Energy Holdings II, LLC, 1530 16th Street, Suite 500, Denver, CO 80202				
CERTIFICATE				
I declare under penalties prescribed in Section 91.143, Natural Resources Code, that I am authorized to make this report, that this report was prepared by me or under my supervision, and that I am qualified to make this certification by virtue of my training and experience, and by my analysis of the operation being certified, or by the analysis of qualified person working under my supervision, and that the data and facts stated therein are true, correct, and complete, to the best of my knowledge.				
 Representative of Company		Engineering Tech (720) 974-2069		04/09/18 Date

RAILROAD COMMISSION USE ONLY

APPROVED BY: _____ DATE: _____

REMARKS: CERTIFICATION NUMBER: _____

1. Field name exactly as shown on proration schedule PHANTOM (WOLFCAMP)			2. Lease name as shown on proration schedule UL MAROON 0904-21 A				
3. Current operator name exactly as shown on P-5 Organization Report FELIX ENERGY HOLDINGS II, LLC			4. Operator P-5 no. 265322	5. Oil Lse/Gas ID no 51806	6. County WINKLER	7. RRC district 08	
8. Operator address including city, state, and zip code FELIX ENERGY 1530 16TH ST SUITE 500 DENVER, CO 80202			9. Well no(s) (<i>see instruction E</i>) 1H				
			10. Classification <input checked="" type="checkbox"/> Oil <input type="checkbox"/> Gas <input type="checkbox"/> Other (<i>see instruction A</i>)		11. Effective Date 11/25/2018		
12. Purpose of Filing. (Complete section a or b below.) (<i>See instructions B and G</i>) a. Change of: <input type="checkbox"/> operator <input type="checkbox"/> oil or condensate gatherer <input type="checkbox"/> gas gatherer <input type="checkbox"/> gas purchaser <input type="checkbox"/> gas purchaser system code <input type="checkbox"/> field name from _____ <input type="checkbox"/> lease name from _____ <hr style="border-top: 1px dashed black;"/> OR b. New RRC Number for: <input checked="" type="checkbox"/> oil lease <input type="checkbox"/> gas well Due to: <input checked="" type="checkbox"/> new completion or recompletion <input type="checkbox"/> reclass oil to gas <input type="checkbox"/> reclass gas to oil <input type="checkbox"/> other well (specify) _____ <input type="checkbox"/> consolidation, unitization, or subdivision (oil lease only)							
13. Authorized GAS WELL GAS or CASINGHEAD GAS Gatherer(s) and/or Purchaser(s). (<i>See instruction G</i>).							
Gatherer	Purchaser	Name of GAS WELL GAS or CASINGHEAD GAS Gatherer(s) or Purchaser(s) As Indicated in Columns to the Left (Attach an additional sheet in same format if more space is needed)			Purchaser's RRC Assigned System Code	Percent of Take	Full-well stream
X	X	TARGA DELAWARE LLC(836022)			0001	100.0	
14. Authorized OIL or CONDENSATE Gatherer(s). (<i>See instruction G</i>).							
Name of OIL or CONDENSATE Gatherer(s) - List Highest Volume Gatherer First (Attach an additional sheet in same format if more space is needed)						Percent of Take	
FELIX MIDSTREAM, LLC(265324)						98.0	
RMCO LOGISTICS LLC(714201)						1.0	
CONCORD CRUDE OIL MARKETING LLC(170262)						1.0	
RRC USE ONLY: Reviewer's initials: _____ Approval date: _____							
15. PREVIOUS OPERATOR CERTIFICATION FOR CHANGE OF OPERATOR P-4 FILING. Being the PREVIOUS OPERATOR, I certify that operating responsibility for the well(s) designated in this filing, located on the subject lease has been transferred in its entirety to the above named Current Operator. I understand, as Previous Operator, that designation of the above named operator as Current Operator is not effective until this certificate is approved by the Commission.							
Name of Previous Operator _____ Name (print) _____ Title _____				Signature _____ <input type="checkbox"/> Authorized Employee of previous operator <input type="checkbox"/> Authorized agent of previous operator (<i>see instruction G</i>) Date _____ Phone with area code _____			
16. CURRENT OPERATOR CERTIFICATION. By signing this certificate as the Current Operator, I certify that all statements on this form are true and correct and I acknowledge responsibility for the regulatory compliance of the subject lease including plugging of well(s) pursuant to Rule 14. I further acknowledge that I assume responsibility for the physical operation, control, and proper plugging of each well designated in this filing. I also acknowledge that I will remain designated as the Current Operator until a new certificate designating a new Current Operator is approved by the Commission.							
FELIX ENERGY HOLDINGS II, LLC Name (print) Felix Admin Services Title heatherd@felix-energy.com E-mail Address (optional)				Heather Dahlgren Signature <input checked="" type="checkbox"/> Authorized Employee of current operator <input type="checkbox"/> Authorized agent of current operator (<i>see instruction G</i>) 04/22/2019 (720) 974-2069 Date Phone with area code			

Form P-16

Page 1

Acreage Designation

SECTION I. OPERATOR INFORMATION			
Operator Name:	Felix Energy Holdings II, LLC	Operator P-5 No.:	265322
Operator Address:	1530 16th Street, Suite 500, Denver, CO 80202		

District No.:	08	API No.:	42-495-34108	Purpose of Filing: <input type="checkbox"/> Drilling Permit Application (Form W-1) <input checked="" type="checkbox"/> Completion Report (Form G-1/W-2)
Well No.:	1H	Drilling Permit No.:	838557	
Lease Name:	UL Maroon 0904-21 A	RRC ID or Lease No.:		
Total Lease Acres:	961.74	Field Name:	Phantom (Wolfcamp)	
Proration Acres:	401.74	Field No.:	71052900	
Wellbore Profile	Allocation Well	Is this a UFT field?	Yes	
SL Record (Parent) Well Drilling Permit No.:		County:	Select One	

[illegible]

A. Total Assigned Horiz. Acreage	=	
Total Remaining Horiz. Acreage	=	
B. Total Assigned Vert./Dir. Acreage	=	
Total Remaining Vert./Dir. Acreage	=	

C. Total Assigned Acreage	=	
Total Remaining Acreage	=	

☐ **Additional Pages:** (No. of additional pages)

Captal mfi
Signature

crystalh@felix-energy.com

1530 16th Street, Suite 500	Denver	CO	80202
Address	City,	State,	Zip Code

Tel: **720-974-2076**

Date: 04/30/19
mo. day yr.

Form P-16

Page 2
Rev. 02/2019

Filer is the owner or lessee of all or an undivided portion of the minerals under each tract listed below and has the legal right to drill on each tract traversed by the well that will have perforations or other take points open in the interval of the applied-for field(s). All tracts listed will actually be traversed by the wellbore or the filer has pooling authority or other contractual authority, such as a production sharing agreement, authorizing inclusion of the non-drill site tract in the acreage assigned to the well.

RRC ID No., Lease No. or Tract ID		Lease Name	Beginning Lease Acres	Allocated Lease Acres	Ending Lease Acres	Operator Name and Operator No. (if different from filing operator)
A	49852	UL Urad 1609-21 Lease	641.11	161.11	480.00	
B	44762	University 4-21 Lease	320.63	240.63	80.00	
C						
D						
E						
F						
G						
H						
Total Acreage =			961.74	401.74	560.00	

[illegible][illegible]

**A revised P-16 is required if updating the proration acreage on an existing Allocation or PSA well utilizing acreage from a regulatory lease or undeveloped tract not listed in Section V.
(refer to instructions)*

RAILROAD COMMISSION OF TEXAS
OIL & GAS DIVISION

PERMIT TO DRILL, DEEPEN, PLUG BACK, OR RE-ENTER ON A REGULAR OR ADMINISTRATIVE EXCEPTION LOCATION

PERMIT NUMBER <div style="text-align: right;">838557</div>	DATE PERMIT ISSUED OR AMENDED (AMENDED) Mar 15, 2019	DISTRICT <div style="text-align: right;">* 08</div>			
API NUMBER <div style="text-align: right;">42-495-34108</div>	FORM W-1 RECEIVED <div style="text-align: right;">Mar 08, 2019</div>	COUNTY <div style="text-align: right;">WINKLER</div>			
TYPE OF OPERATION <div style="text-align: right;">NEW DRILL</div>	WELLBORE PROFILE(S) <div style="text-align: right;">Horizontal</div>	ACRES <div style="text-align: right;">961.74</div>			
OPERATOR <div style="text-align: right;">265322</div> <div style="text-align: center;">FELIX ENERGY HOLDINGS II, LLC</div> <div style="text-align: center;"> FELIX ENERGY 1530 16TH ST SUITE 500 DENVER, CO 80202-0000 </div>		NOTICE This permit and any allowable assigned may be revoked if payment for fee(s) submitted to the Commission is not honored. <div style="text-align: right;">District Office Telephone No:</div> <div style="text-align: right;">(432) 684-5581</div>			
LEASE NAME <div style="text-align: right;">UL MAROON 0904-21 A</div>		WELL NUMBER <div style="text-align: right;">1H</div>			
LOCATION <div style="text-align: right;">4.27 miles W direction from WINK</div>		TOTAL DEPTH <div style="text-align: right;">14000</div>			
Section, Block and/or Survey <div style="display: flex; justify-content: space-between;"> <div>SECTION 16</div> <div>BLOCK 21</div> <div>ABSTRACT U56</div> </div> <div style="display: flex; justify-content: space-between;"> <div>SURVEY UL</div> </div>					
DISTANCE TO SURVEY LINES <div style="display: flex; justify-content: space-between;"> <div>1171 ft. N (OFFLEASE)</div> <div>2232 ft. E (OFFLEASE)</div> </div>		DISTANCE TO NEAREST LEASE LINE <div style="text-align: right;">1 ft.</div>			
DISTANCE TO LEASE LINES <div style="display: flex; justify-content: space-between;"> <div>1171 ft. N (OFFLEASE)</div> <div>2232 ft. E (OFFLEASE)</div> </div>		DISTANCE TO NEAREST WELL ON LEASE <div style="text-align: right;">See FIELD(s) Below</div>			
FIELD(s) and LIMITATIONS: <div style="text-align: center;"> * SEE FIELD DISTRICT FOR REPORTING PURPOSES * ** THIS PERMIT IS GRANTED PURSUANT TO STATEWIDE RULE 37(h)(2)(B) ** CASE NO. 0310687 </div>					
FIELD NAME LEASE NAME		ACRES	DEPTH	WELL #	DIST
----- ** PHANTOM (WOLFCAMP) <div style="text-align: right;">UL MAROON 0904-21 A</div> -----		NEAREST LEASE <div style="text-align: center;">961.74 1</div>	----- <div style="text-align: center;">14,000</div>	NEAREST WE <div style="text-align: center;">1H 1884</div>	----- <div style="text-align: center;">08</div>
----- WELLBORE PROFILE(s) FOR FIELD: Horizontal -----					
RESTRICTIONS: This is a hydrogen sulfide field. Hydrogen Sulfide Fields with perforations must be isolated and tested per State Wide Rule 36 and a Form H-9 filed with the district office. Fields with SWR 10 authority to downhole commingle must be isolated and tested individually prior to commingling production. Lateral: TH1 Penetration Point Location <div style="display: flex; justify-content: space-between;"> <div>Lease Lines:</div> <div>1118.0 F N (OFFLEASE) L</div> <div>2420.0 F E (OFFLEASE) L</div> </div> Terminus Location BH County: WINKLER Section: 4 Block: 21 Abstract: Survey: UL / A-U44 Lease Lines: 50.0 F N L 71.0 F E L Survey Lines: 50.0 F N L 2570.0 F W L					
' ** ' PRECEDING FIELD NAME INDICATES RULE (R37)					
THE FOLLOWING RESTRICTIONS APPLY TO ALL FIELDS					

RAILROAD COMMISSION OF TEXAS
OIL & GAS DIVISION

PERMIT TO DRILL, DEEPEN, PLUG BACK, OR RE-ENTER ON A REGULAR OR ADMINISTRATIVE EXCEPTION LOCATION

PERMIT NUMBER <div style="text-align: right;">838557</div>	DATE PERMIT ISSUED OR AMENDED (AMENDED) Mar 15, 2019	DISTRICT <div style="text-align: center;">* 08</div>
API NUMBER <div style="text-align: right;">42-495-34108</div>	FORM W-1 RECEIVED <div style="text-align: center;">Mar 08, 2019</div>	COUNTY <div style="text-align: center;">WINKLER</div>
TYPE OF OPERATION <div style="text-align: center;">NEW DRILL</div>	WELLBORE PROFILE(S) <div style="text-align: center;">Horizontal</div>	ACRES <div style="text-align: center;">961.74</div>
OPERATOR <div style="text-align: right;">265322</div> <div style="text-align: center;">FELIX ENERGY HOLDINGS II, LLC</div> <div style="text-align: center;"> FELIX ENERGY 1530 16TH ST SUITE 500 DENVER, CO 80202-0000 </div>		NOTICE This permit and any allowable assigned may be revoked if payment for fee(s) submitted to the Commission is not honored. District Office Telephone No: <div style="text-align: center;">(432) 684-5581</div>
LEASE NAME <div style="text-align: center;">UL MAROON 0904-21 A</div>		WELL NUMBER <div style="text-align: center;">1H</div>
LOCATION <div style="text-align: center;">4.27 miles W direction from WINK</div>		TOTAL DEPTH <div style="text-align: center;">14000</div>
Section, Block and/or Survey <div style="display: flex; justify-content: space-between;"> <div>SECTION 16</div> <div>BLOCK 21</div> <div>ABSTRACT U56</div> </div> <div style="display: flex; justify-content: space-between;"> <div>SURVEY UL</div> </div>		
DISTANCE TO SURVEY LINES <div style="display: flex; justify-content: space-between;"> <div>1171 ft. N (OFFLEASE)</div> <div>2232 ft. E (OFFLEASE)</div> </div>		DISTANCE TO NEAREST LEASE LINE <div style="text-align: center;">1 ft.</div>
DISTANCE TO LEASE LINES <div style="display: flex; justify-content: space-between;"> <div>1171 ft. N (OFFLEASE)</div> <div>2232 ft. E (OFFLEASE)</div> </div>		DISTANCE TO NEAREST WELL ON LEASE <div style="text-align: center;">See FIELD(s) Below</div>
FIELD(s) and LIMITATIONS: <div style="text-align: center;"> * SEE FIELD DISTRICT FOR REPORTING PURPOSES * ** THIS PERMIT IS GRANTED PURSUANT TO STATEWIDE RULE 37(h)(2)(B) ** CASE NO. 0310687 </div>		
<div style="display: flex; justify-content: space-between;"> <div> FIELD NAME LEASE NAME </div> <div> ACRES NEAREST LEASE </div> <div> DEPTH NEAREST WE </div> <div> WELL # NEAREST WE </div> <div> DIST </div> </div> <p>This well shall be completed and produced in compliance with applicable special field or statewide spacing and density rules. If this well is to be used for brine mining, underground storage of liquid hydrocarbons in salt formations, or underground storage of gas in salt formations, a permit for that specific purpose must be obtained from Environmental Services prior to construction, including drilling, of the well in accordance with Statewide Rules 81, 95, and 97.</p> <p>The designated interval, for one or more of the fields approved on this permit, appears to overlap with the designated interval of another field or fields in this district. In the case of conflicting designated intervals, you will be required to be consistent in field designation on this lease. Furthermore, if the designated interval overlap of wells on this lease results in an actual or potential double assignment of reservoir and the applicant cannot conclusively demonstrate that there is no double assignment, the permitted well may not be assigned an allowable until the conflict is resolved. Because of the overlapping designated intervals in this area, issuance of this permit does not guarantee that the completion of the well will be approved or that the well will receive an allowable in any given field, even if that field is listed on the approved permit application.</p> <p>Currently there are no identified formations listed for this county. It is still the operators responsibility to isolate and report any potential flow zones that are encountered in the completion of this well.</p>		

GROUNDWATER PROTECTION DETERMINATION

Form GW-2



Groundwater Advisory Unit

Date Issued: 08 July 2016**GAU Number:** 157181**Attention:** FELIX ENERGY HOLDINGS II,
FELIX ENERGY
DENVER, CO 80202**Operator No.:** 265322**API Number:**
County: WINKLER
Lease Name: UL Maroon 9-21
Lease Number:
Well Number: 1H
Total Vertical Depth: 12000
Latitude: 31.744243
Longitude: -103.242547
Datum: NAD27**Purpose:** New Drill**Location:** Survey-UL; Abstract-U49; Block-21; Section-9

To protect usable-quality groundwater at this location, the Groundwater Advisory Unit of the Railroad Commission of Texas recommends:

The interval from the land surface to the base of the Santa Rosa, which is estimated to occur at a depth of 950 feet, must be protected.

This recommendation is applicable to all wells within a radius of 200 feet of this location.

Note: Unless stated otherwise, this recommendation is intended to apply only to the subject well and not for area-wide use. This recommendation is for normal drilling, production, and plugging operations only. It does not apply to saltwater disposal operation into a nonproductive zone (RRC Form W-14).

This determination is based on information provided when the application was submitted on 07/08/2016. If the location information has changed, you must contact the Groundwater Advisory Unit, and submit a new application if necessary. If you have questions, please contact us at 512-463-2741 or gau@rrc.texas.gov.

Groundwater Advisory Unit, Oil and Gas Division

Form GW-2 P.O. Box 12967 Austin, Texas 78771-2967 512-463-2741 Internet address: www.rrc.texas.gov
Rev. 02/2014



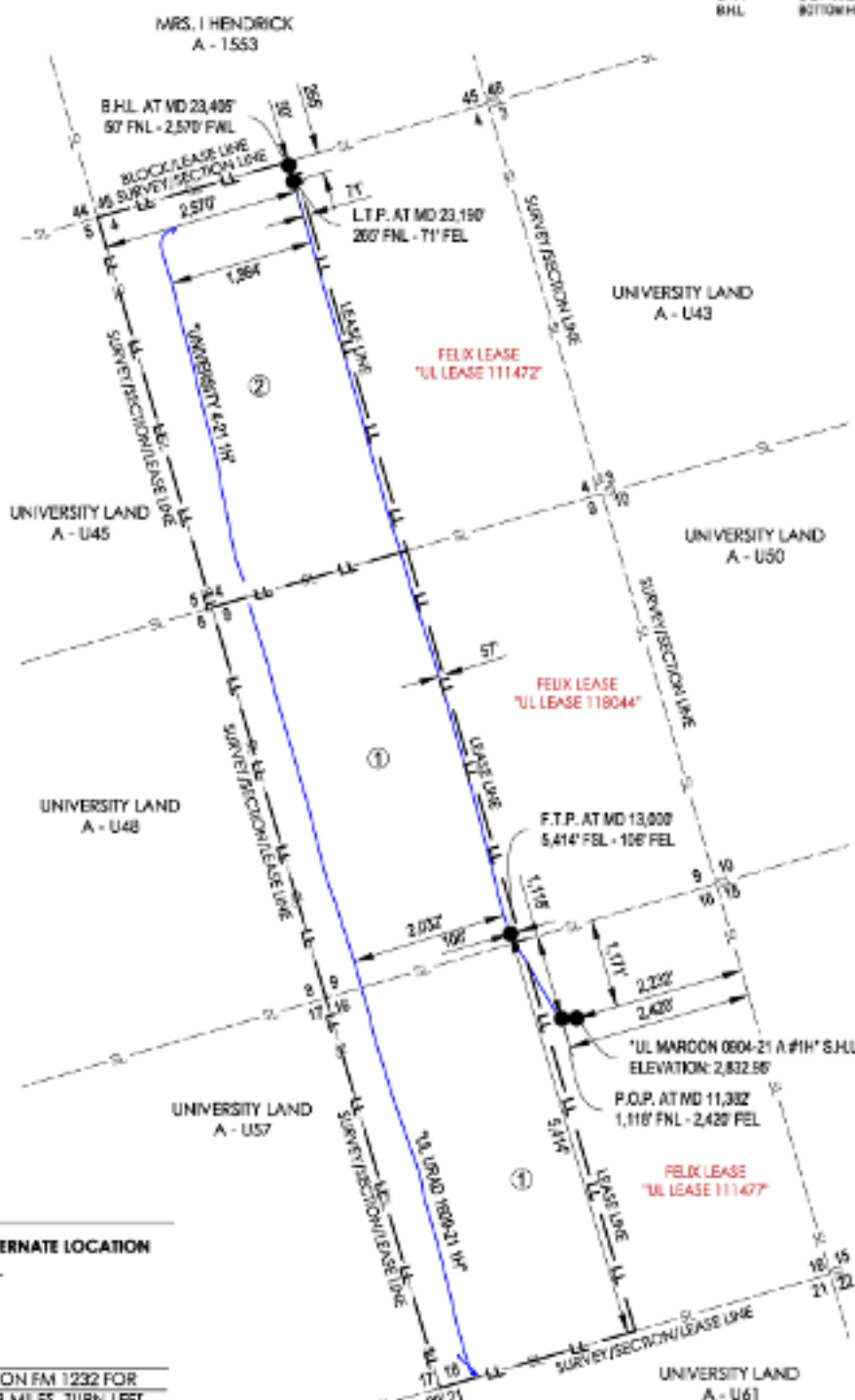
FELIX ENERGY HOLDINGS II, LLC
WINKLER COUNTY, TEXAS
S.H.L. 1,171' FNL - 2,232' FEL, SECTION 16, BLOCK 21

LEGEND

LL	LEASE LINE
SL	SURVEY LINE
AS-D R L L S W L L P A T H	AS-D R L L S W L L P A T H
S.H.L.	SURFACE HOLE LOCATION
P.O.P.	POINT OF PENETRATION
F.T.P.	FIRST TAKE POINT
L.T.P.	LAST TAKE POINT
B.H.L.	BOTTOM HOLE LOCATION

②
W/2 OF SEC. 4 - BLOCK 21
320.63 ACRES
UNIVERSITY LAND
A - U44
TRACT 2"
"UNIVERSITY 4-21 LEASE"

①
W/2 OF SEC. 9 & 16 - BLOCK 21
641.11 ACRES
UNIVERSITY LAND
A - U49 & A - U56
TRACT 1"
"UL URAD 1609-21 LEASE"



OPERATOR: FELIX ENERGY HOLDINGS II, LLC

WELL NAME: UL MAROON 0904-21 A WELL NO: 1H

TOPOGRAPHIC & VEGETATION: FLAT LOCATION WITH LOW LYING BRUSH

GOOD DRILL SITE: YES

REFERENCE STAKES OR ALTERNATE LOCATION
STAKES SET: NONE

BEST ACCESSIBILITY TO LOCATION: FROM WEST

DISTANCE & DIRECTION

FROM HWY JCT OR TOWN: ±4.27 MILES WEST OF WINK, TX
FROM THE INTERSECTION OF HENDRICKS BLVD. AND FM. 1232 HEAD WEST ON FM. 1232 FOR
±1.5 MILES, TURN LEFT ONTO COUNTY ROAD 201 AND CONTINUE FOR ±3.3 MILES, TURN LEFT
ONTO EXISTING LEASE ROAD FOR ±0.2 MILES AND THE PAD WILL BE ON YOUR LEFT.

SURFACE HOLE LOCATION:

1,171' FNL & 2,232' FEL (SEC. 16)

GROUND ELEVATION: 2,832.95'

NAD 27 TEXAS CENTRAL ZONE

NORTHING: 766867.24, EASTING: 1098664.19

LONGITUDE: N 31.74289965°, LONGITUDE: W 103.23302236°

NAD 83 TEXAS CENTRAL ZONE

NORTHING: 10609443.71, EASTING: 1395129.04

LONGITUDE: N 31.74302838°, LONGITUDE: W 103.23346893°

POINT OF PENETRATION:

1,118' FNL & 2,420' FEL (SEC. 16)

NAD 27 TEXAS CENTRAL ZONE

NORTHING: 766865.31, EASTING: 1098469.25

LONGITUDE: N 31.74288036°, LONGITUDE: W 103.23364905°

FIRST TAKE POINT:

5,414' FSL & 106' FEL (LEASE)

NAD 27 TEXAS CENTRAL ZONE

NORTHING: 767968.72, EASTING: 1097805.80

LONGITUDE: N 31.74586510°, LONGITUDE: W 103.23587506°

LAST TAKE POINT:

265' FNL & 71' FEL (LEASE)

NAD 27 TEXAS CENTRAL ZONE

NORTHING: 777751.22, EASTING: 1094984.46

LONGITUDE: N 31.77254564°, LONGITUDE: W 103.24577156°

BOTTOM HOLE LOCATION:

50' FNL & 2,570' FNL (SEC. 4)

NAD 27 TEXAS CENTRAL ZONE

NORTHING: 777957.41, EASTING: 1094923.61

LONGITUDE: N 31.77310789°, LONGITUDE: W 103.24598465°

UNIT CORNERS

LOCATION	NAD27	COORDINATES
NW CORNER SEC. 4-BLK 21	N = 777284.80 E = 192442.21	LAT: 31.77180869° LONG: -103.25090861°
NE CORNER OF UNIT	N = 778025.76 E = 192497.73	LAT: 31.77320881° LONG: -103.24581633°
SE CORNER OF UNIT	N = 782801.84 E = 1928434.79	LAT: 31.7213134° LONG: -103.23023600°
SW CORNER SEC. 16-BLK 21	N = 782800.48 E = 1928434.09	LAT: 31.7206628° LONG: -103.23032348°



CONTACT INFORMATION:
Bradley G. Russell
Cellular: 817.157.1195
1000 Ledgeview Dr.
Conway, AR 72034

GENERAL NOTES

1. THE LOCATIONS OF UNDERGROUND UTILITIES AS SHOWN HEREON ARE BASED ON REASONABLE VISUAL OBSERVATION. LOCATIONS OF UNDERGROUND UTILITIES/STRUCTURES MAY VARY FROM LOCATIONS SHOWN HEREON. ADDITIONAL BURIED UTILITIES/STRUCTURES MAY BE ENCOUNTERED. NO EXCAVATIONS WERE MADE DURING THE PROGRESS OF THIS SURVEY TO LOCATE BURIED UTILITIES/STRUCTURES. BEFORE EXCAVATIONS ARE BEGUN, THE OFFICES OF THE VARIOUS UTILITIES SERVING THIS AREA SHOULD BE CONTACTED FOR THEIR UTILITY LOCATION.
2. BASIS OF BEARINGS: TEXAS STATE PLANE GRID, CENTRAL ZONE, NAD83 AS DETERMINED BY GPS OBSERVATION.
3. COMBINED SCALE FACTOR AT S.H.L. - 1.00000000
4. VERTICAL DATUM IS MVD 80
5. AREAS, DISTANCES, AND COORDINATES ARE "GROSS" BASED ON U.S. SURVEY FEET.
6. THIS PLAT DOES NOT REPRESENT A BOUNDARY SURVEY.



501.328.3514 | 501.328.3225
www.craftontull.com

REVISION

NO.	DESCRIPTION
1	11-30-2018

"UL MAROON 0904-21 A #1H"

W/2 - SECTION 4, BLOCK 21 - 320.63 ACRES
W/2 - SECTION 9, BLOCK 21 - 320.61 ACRES
W/2 - SECTION 16, BLOCK 21 - 320.50 ACRES

FINAL AS-D R L L S W L L P A T H
WINKLER COUNTY, TEXAS

SCALE: 1" = 2000'

PLOT DATE: 11-30-2018

CHECKED BY:

DRAWN BY:

APPROVED BY:

L.DOW SHEET NO.: 1 OF 1

