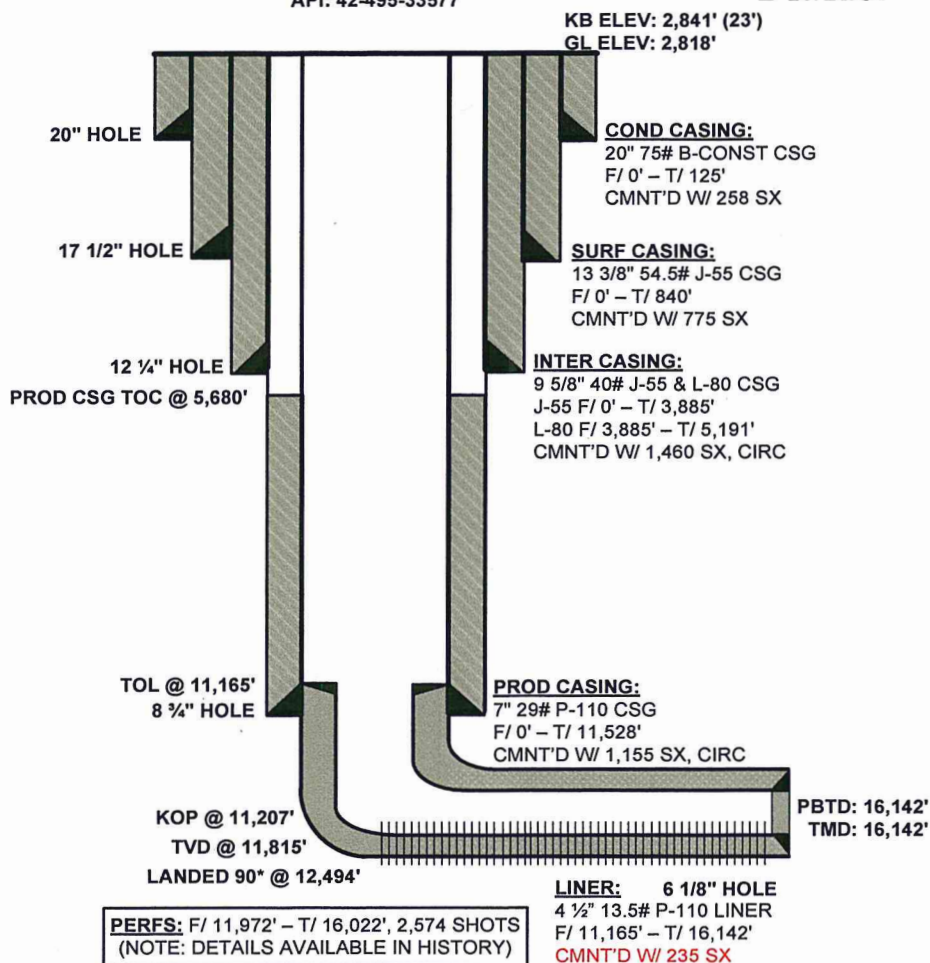


# UNIV BLK 21 1803H

## WELLBORE DIAGRAM

**UNIV BLK 21 1803H**  
487' FNL & 1,897' FWL, SEC 18, BLK 21  
WINKLER COUNTY, TEXAS  
API: 42-495-33577



REVISED 2/12/15 SHALE

### DATA

**LOCATION:** 487' FNL & 1,897' FWL, SEC 18, BLK 21  
**COUNTY/STATE:** WINKLER COUNTY, TEXAS  
**FIELD:** TWO GEORGES **LEASE:** UNIV BLK 21  
**DRLG PERMIT#:** 790112 **SPUD DATE:** 11/06/14 **FORMATION:** BONE SPRINGS  
**API #:** 42-495-33577 **OPERATOR #:** 945936 **COMPLETION DATE:** 12/15/14  
**PRODUCTION METHOD:**  
**TUBING STRING (I):**  
**ROD STRING (I):**  
**PUMP (I):**

### HISTORY

**09/13/14:** D&C - SPUD WELL 11/06/14, COMPLETE WELL 12/15/14, RUN GR/CBL LOGS, WITH 1,500 PSI. FOUND TOP OF CEMENT AT 5,680', SENT LOGS TO MIDLAND, TESTED CSG AND FRAC STACK TO 9,000 PSI FOR 10 MINS AND LOST 100 PSI, GOOD TEST, RIH PERF STAGE 1: F/ 15,916' - T/ 16,022', 39 HOLES, FRAC STAGE 1: W/ N27,600# PROP, AIR 61.3 BPM. ATP 8,203 PSIG. MAX TP 8,572 PSIG. MAX SD CONC 3.0 PPG. ISIP 5,232 PSIG. FRAC GRAD 0.91 PSIG/FT. 5,775 BLWTR, STAGE 2: F/ 15,732' - T/ 15,838', 39 HOLES, TTL SD 224,700#. AIR 66.4 BPM. ATP 8,062 PSIG. MAX TP 8,431 PSIG. MAX SD CONC 3.5 PPG. ISIP 5,465 PSIG. FRAC GRAD 0.92 PSIG/FT. 5,088 BLWTR, STAGE 3: F/ 15,557' - T/ 15,663', 39 HOLES, TTL SD 12,800#. AIR 67.5 BPM. ATP 8,149 PSI. MAX TP 8,467 PSIG. MAX SD CONC 3.50 PPG. ISIP 5,313 PSIG FRAC GRAD 0.91 PSIG/FT. 4,969 BLWTR, STAGE 4: F/ 15,382' - T/ 15,488', 39 HOLES, TTL SD 231,800#. AIR 66.4 BPM. ATP 8,153 PSI. MAX TP 8,493 PSIG. MAX SD CONC 3.5 PPG. ISIP 5401 PSIG. FRAC GRAD 0.92. 5,358 BLWTR. TOTAL BLWTR 21,548, STAGE 5: F/ 15,207' - T/ 15,313', 39 HOLES, TTL SD 226,400#. AIR 68.3 BPM. ATP 8,219 PSI. MAX TP 8,574 PSIG. MAX SD CONC 3.5 PPG. ISIP 5,360 PSIG. FRAC GRAD 0.91 PSIG/FT. 5,672 BLWTR, STAGE 6: F/ 15,032' - T/ 15,138', 39 HOLES, TTL SD 222,400#. AIR 65.4 BPM. ATP 8,098 PSI. MAX TP 8,598 PSIG. MAX SD CONC 4.0 PPG. ISIP 5,161 PSIG. FRAC GRAD 0.89 PSIG/FT. 4,879 BLWTR, STAGE 7: F/ 14,857' - T/ 14,963', 39 HOLES, TTL SD 221,400#. AIR 66.0 BPM. ATP 8,021 PSI. MAX TP 8,678 PSIG, MAX SD CONC 4.0 PPG. ISIP 5,268 PSIG. FRAC GRAD 0.90 PSIG/FT. 5,706 BLWTR, STAGE 8: F/ 14,682' - T/ 14,788', 39 SHOTS, TTL SD 231,300#. AIR 70.5 BPM. ATP 8,119 PSI. MAX TP 8,526 PSIG. MAX SD CONC 4.0 PPG. ISIP 5,333 PSIG. FRAC GRAD 0.93 PSIG/FT. 4,971 BLWTR, STAGE 9: F/ 14,507' - T/ 14,613', 39 SHOTS, TTL SD 204,700#. AIR 60.0 BPM. ATP 7,544 PSI. MAX TP 8,544 PSIG. MAX SD CONC 3.0 PPG. ISIP 5,584 PSIG. FRAC GRAD 0.93 PSIG/FT. 6,037 BLWTR, STAGE 10: F/ 14,332' - T/ 14,438', 39 HOLES, TTL SD 229,200#. AIR 67.9 BPM. ATP 8,016 PSI. MAX TP 8,501 PSIG. MAX SD CONC 4.0 PPG. ISIP 5,142 PSIG. FRAC GRAD 0.89 PSIG/FT. 5,990 BLWTR, STAGE 11: F/ 14,157' - T/ 14,263', 39 HOLES, TTL SD 225,100#. AIR 67.9 BPM. ATP 8,133 PSI. MAX TP 8,585 PSIG. MAX SD CONC 4.0 PPG. ISIP 5,832 PSIG. FRAC GRAD 0.95 PSIG/FT. 4,952 BLWTR, STAGE 12: F/ 13,982' - T/ 14,088', 39 HOLES, TTL SD 204,700#. AIR 68.9 BPM. ATP 8,105 PSI. MAX TP 8,590 PSIG. MAX SD CONC 4.0 PPG. ISIP 5,902 PSIG. FRAC GRAD 0.96 PSIG/FT. 5,198 BLWTR, STAGE 13: F/ 13,807' - T/ 13,913', 39 HOLES, 227,900# PROP, AIR 73.9 BPM. ATP 7,750PSI. MAX TP 8,536PSIG. MAX SD CONC. 4.00 PPG. ISIP 5,371 PSIG. 7,144 BLWTR, STAGE 14: F/ 13,635' - T/ 13,738', 39 HOLES, FLUSHED W/21,252 GAL TREATED WTR. AIR 78.1 BPM. ATP 7,774PSI. MAX TP 8,377PSIG. MAX SD CONC. 4.00 PPG. ISIP 5,547 PSIG. 5,074 BLWTR, STAGE 15: F/ 13,457' - T/ 13,563', 39 HOLES, AIR-73.8BPM, ATP-8005PSI, MAX TP- 8695PSIG. MAX SAND CONC. 4.00PPG. ISIP- 5313 PSIG. FG-91 4,771 BLWTR, STAGE 16: F/ 13,282' - T/ 13,388', 39 HOLES, TTL SD 232,900#. AIR 70.8 BPM. ATP 7,965 PSI. MAX TP 8,376 PSIG. MAX SD CONC 4.0 PPG. ISIP 5,964 PSIG. FRAC GRAD 0.97 PSIG/FT. 5,027 BLWTR, STAGE 17: F/ 13,107' - T/ 13,213', 39 HOLES, TTL SD 235,700#. AIR 70.8 BPM. ATP 8,023 PSI. MAX TP 8,529 PSIG. MAX SD CONC 4.0 PPG. ISIP 6,211 PSIG. FRAC GRAD 0.99 PSIG/FT. 4,439 BLWTR, STAGE 18: F/ 12,930' - T/ 13,038', 39 HOLES, TTL SD 217,700#. AIR 74.0 BPM.

# UNIV BLK 21 1803H

## WELLBORE DIAGRAM

ATP 7,792 PSI. MAX TP 8,417 PSIG. MAX SD CONC 4.0 PPG. ISIP 6,211 PSIG. FRAC GRAD 0.95 PSIG/FT. 4,827 BLWTR, **STAGE 19: F/ 12,757' – T/ 12,863', 39 HOLES**, TTL SD 230,500#. AIR 74.3PM. ATP 7,686 PSI. MAX TP 8,553 PSIG. MAX SD CONC 4.5 PPG. ISIP 5,220 PSIG. FRAC GRAD 0.90 PSIG/FT. 5,221 BLWTR, **STAGE 20: F/ 12,686' – T/ 12,688', 39 HOLES**, TTL SD 230,500#. AIR 74.3 BPM. ATP 7,686 PSI. MAX TP 8,553 PSIG. MAX SD CONC 4.5 PPG. ISIP 5,220 PSIG. FRAC GRAD 0.90 PSIG/FT. 5,221 BLWTR, **STAGE 21: F/ 12,306' – T/ 12,412', 39 HOLES**, TTL SD 209,200#. AIR 70.2 BPM. ATP 7,624 PSI. MAX TP 8,199 PSIG. MAX SD CONC 4.5 PPG. ISIP 5,901 PSIG. FRAC GRAD 0.96 PSIG/FT. 4,636 BLWTR, **STAGE 22: F/ 12,156' – T/ 12,078', 39 HOLES**, TTL SD 209,200#. AIR 70.2 BPM. ATP 7,624 PSI. MAX TP 8,199 PSIG. MAX SD CONC 4.5 PPG. ISIP 5,901 PSIG. FRAC GRAD 0.96 PSIG/FT. 4,636 BLWTR, **STAGE 23: F/ 11,972' – T/ 12,078', 39 HOLES**, DO NOT HAVE THE SPECIFICS FROM THE 23<sup>RD</sup> STAGE.

01/28/15: PWOP – RIH W/ C/T & D/O ALL PLUGS T/ 16,142' (PBDT), 02/12/15