

RAILROAD COMMISSION OF TEXAS

Tracking No.: 107536

Status: Submitted

Oil and Gas Division

This facsimile W-2 was generated electronically from data submitted to the RRC.

APINo. 42- 495-33544

7. RRC District No.
08

Oil Well Potential Test, Completion or Recompletion Report, and Log

8. RRC Lease No.

1. FIELD NAME (as per RRC Records or Wildcat) PHANTOM (WOLFCAMP)		2. LEASE NAME UNIVERSITY 20-10 WNK		9. Well No. 1H	
3. OPERATOR'S NAME (Exactly as shown on Form P-5, Organization Report) SHELL WESTERN E&P		RRC Operator No. 774719		10. County of well site WINKLER	
4. ADDRESS PO BOX 576 HOUSTON, TX 77001-0000				11. Purpose of filing Initial Potential <input type="checkbox"/> Retest <input type="checkbox"/> Reclass <input type="checkbox"/> Well record only (Explain in remarks) <input checked="" type="checkbox"/>	
5. If Operator has changed within last 60 days, name former operator					
6a. Location (Section, Block, and Survey) 10 , 20 , UL		6b. Distance and direction to nearest town in this county. WINK			
12. If workover or reclass, give former field (with reservoir) & Gas ID or oil lease no. FIELD & RESERVOIR			GAS ID or OIL LEASE #	Oil-O Gas-G	Well #
N/A					
13. Type of electric or other log run Resistivity only			14. Completion or recompletion date 04/26/2014		

SECTION I- POTENTIAL TEST DATA IMPORTANT: Test should be for 24 hours unless otherwise specified infield rules.

15. Date of test		16. No. of hours tested		17. Production method (Flowing, Gas Lift, Jetting, Pumping- Size & Type of pump)		18. Choke size	
19. Production during Test Period		Oil - BBLS	Gas - MCF	Water - BBLS	Gas - Oil Ratio	Flowing Tubing Pressure PSI	
					0		
20. Calculated 24-Hour Rate		Oil - BBLS	Gas - MCF	Water - BBLS	Oil Gravity-API-60°	Casing Pressure PSI	
21. Was swab used during this test? Yes <input type="checkbox"/> No <input checked="" type="checkbox"/>				22. Oil produced prior to test (New & Reworked wells)		23. Injection Gas-Oil Ratio	
REMARKS: N/A							

INSTRUCTIONS: File an original and one copy of the completed Form W-2 in the appropriate RRC District Office within 30 days after completing a well and within 10 days after a potential test. If an operator does not properly report the results of a potential test within the 10-day period, the effective date of the allowable assigned to the well will not extend back more than 10 days before the W-2 was received in the District Office. (Statewide Rules 16 and 51) To report a completion or recompletion, fill in both sides of this form. To report a retest, fill in only the front side.

WELL TESTERS CERTIFICATION
I declare under penalties prescribed in Sec. 91.143, Texas Natural Resources Code, that I conducted or supervised this test by observation of (a) meter readings or (b) the top and bottom gauges of each tank into which production was run during the test. I further certify that the potential test data shown above is true, correct, and complete, to the best of my knowledge.

Signature: Well Tester

Name of Company

RRC Representative

OPERATOR'S CERTIFICATION
I declare under penalties prescribed in Sec. 91.143, Texas Natural Resources Code, that I am authorized to make this report, that this report was prepared by me or under my supervision and direction, and that data and facts stated therein are true, correct and complete, to the best of my knowledge.

SHELL WESTERN E&P

Type or printed name of operator's representative

(832) 377-0953

06/13/2014

Telephone: Area Code Number Month Day Year

Regulatory Specialist

Title of Person

Maureen Kovacic

Signature

SECTION III										DATA ON WELL COMPLETION AND LOG (Not Required on Retest)												
24. Type of Completion										25. Permit to Drill, Plug Back or Deepen												
New Well <input checked="" type="checkbox"/> Deepening <input type="checkbox"/> Plug Back <input type="checkbox"/> Other <input type="checkbox"/>										DATE 12/31/2013					PERMIT NO. 775589							
26. Notice of Intention to Drill this well was filed in Name of SHELL WESTERN E&P										Rule 37 Exception												
27. Number of producing wells on this lease in this field (reservoir) including this well 1										28. Total number of acres in this lease 641.31												
29. Date Plug Back, Deepening, Workover or Drilling Operations: 02/04/2014										30. Distance to nearest well, Same Lease & Reservoir 0.0					Water Injection Permit							
31. Location of well, relative to nearest lease boundaries										245.0 Feet From NW					Line and 2600.0 Feet from							
32. Elevation (DF, RKB, RT, GR ETC.) 2796 GL										33. Was directional survey made other than inclination (Form W-12)? <input checked="" type="checkbox"/> Yes <input type="checkbox"/> No												
34. Top of Pay			35. Total Depth 11658 MD:16627			36. P. B. Depth MD:16451			37. Surface Casing Determined by			Field Rules <input type="checkbox"/>			Recommendation of T.D.W.R. <input checked="" type="checkbox"/>			Dt. of Letter 01/02/2014				
												Railroad Commission (Special) <input type="checkbox"/>			Dt. of Letter							
38. Is well multiple completion? <input type="checkbox"/> Yes <input checked="" type="checkbox"/> No																						
39. If multiple completion, list all reservoir names (completions in this well) and Oil Lease or Gas ID No. FIELD & RESERVOIR										GAS ID or OIL LEASE #			Oil-O Gas-G			Well #						
N/A																						
40. Intervals Drilled by:			Rotary Tools <input checked="" type="checkbox"/>			Cable Tools			41. Name of Drilling Contractor										42. Is Cementing Affidavit Attached? <input checked="" type="checkbox"/> Yes <input type="checkbox"/> No			
43. CASING RECORD (Report All Strings Set in Well)																						
CASING SIZE		WT #/FT.		DEPTH SET		MULTISTAGE TOOL DEPTH		TYPE & AMOUNT CEMENT (sacks)		HOLE SIZE		TOP OF CEMENT		SLURRY VOL. cu. ft.								
9 5/8				5092		405		C 360		12 1/4		SURFACE		87.0								
9 5/8				5092				C 2450		12 1/4		405		4761.0								
7				11934				H 720		8 3/4		4000		1602.0								
44. LINER RECORD																						
Size		Top		Bottom		Sacks Cement		Screen														
N/A																						
45. TUBING RECORD										46. Producing Interval (this completion) Indicate depth of perforation or open hole												
Size		Depth Set		Packer Set		From		N/A		To												
N/A						From				To												
						From				To												
						From				To												
47. ACID, SHOT, FRACTURE, CEMENT SQUEEZE, ETC.																						
Depth Interval										Amount and Kind of Material Used												
N/A																						
48. FORMATION RECORD (LIST DEPTHS OF PRINCIPAL GEOLOGICAL MARKERS AND FORMATION TOPS)																						
Formations				Depth				Formations				Depth										
DELAWARE				5157.0 MD: 5166.0				WOLFCAMP				11700.0 MD: 11937.0										
BRUSHY CANYON				7472.0 MD: 7481.0																		
BONE SPRING				9535.0 MD: 9545.0																		
REMARKS: WELL HAS NOT BEEN COMPLETED YET.																						

Cementor: Fill in shaded areas
Operator: Fill in other items

Form W-15
Cementing Report
Rev. 4/1/83
HAL1109

RAILROAD COMMISSION OF TEXAS
Oil and Gas Division

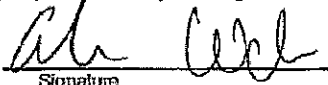
1. Operator's Name (As Shown on Form P-5, Organization Report)	2. RRC Operator No.	3. RRC District No.	4. County of Well Site
Shell Western E&P	774719	08	Winkler
5. Field Name (Wildcat or Exactly as Shown on RRC Records)	6. API No.	7. Drilling Permit No.	
Phantom (Wolfcamp)	42-495-33544	775589	
8. Lease Name	9. Rule 37 Case No.	10. Oil Lease/Gas ID No.	11. Well No.
			1HN

CASING CEMENTING DATA:		SURFACE CASING	INTER-MEDIATE CASING	PRODUCTION CASING		MULTI-STAGE CEMENTING PROCESS	
				Single String	Multiple Parallel Strings	Tool	Shoe
12. Cementing Date						2/10/2014	2/9/2014
13. *Drilled hole size						12 1/4	12 1/4
*Est. % wash or hole enlargement							
14. Size of casing (in. O.D.)						9 5/8	9 5/8
15. Top of liner (ft)							
16. Setting depth (ft)							5092
17. Number of centralizers used						2	23
18. Hrs. waiting on cement before drill-out						+ 24	+ 24
1st Slurry	19. API cement used: No. of sacks ▶					360	1950
	Class ▶					C	C
	Additives ▶					SEE REMARKS	SEE REMARKS
2nd Slurry	No. of sacks ▶						500
	Class ▶						C
	Additives ▶						SEE REMARKS
3rd Slurry	No. of sacks ▶						
	Class ▶						
	Additives ▶						
1st	20. Slurry pumped: Volume (cu.ft.) ▶					87	4076
	Height (ft.) ▶					400	3702
2nd	Volume (cu.ft.) ▶						685
	Height (ft.) ▶						1000
3rd	Volume (cu.ft.) ▶						
	Height (ft.) ▶						
Total	Volume (cu.ft.) ▶					87	4761
	Height (ft.) ▶					400	4702
21. Was cement circulated to ground surface (or bottom of cellar) outside casing?						YES	YES
22. Remarks: 1ST STAGE 1ST SLURRY- 5% SALT, 0.7% HR-800, 3lbm KOL-SEAL 1ST STAGE 2ND SLURRY- 3 lbm KOL-SEAL, 0.4% HR-800, 2% BENTONITE 2ND STAGE SLURRY- 1 lbm KOL-SEAL, 1.5% CALCIUM CHLORIDE PELLETS						Sales Order 901086335 Customer Name SHELL WESTERN E & P - EBUS Lease University 20-10 WNK Well Number 1H Winkler County	


OVER ▶

CEMENTING TO PLUG AND ABANDON	PLUG #1	PLUG #2	PLUG #3	PLUG #4	PLUG #5	PLUG #6	PLUG #7	PLUG #8
23. Cementing date								
24. Size of hole or pipe plugged (in.)								
25. Depth to bottom of tubing or drill pipe (ft.)								
26. Sacks of cement used (each plug)								
27. Slurry volume pumped (cu.ft.)								
28. Calculated top of plug (ft.)								
29. Measured top of plug, if tagged (ft.)								
30. Slurry wt. (lbs/gal)								
31. Type cement								

CEMENTER'S CERTIFICATE: I declare under penalties prescribed in Sec. 91.143, Texas Natural Resources Code, that I am authorized to make this certification, that the cementing of casing and/or the placing of cement plugs in this well as shown in the report was performed by me or under my supervision, and that the cementing data and facts presented on both sides of this form are true, correct, and complete, to the best of my knowledge. This certification covers cementing data only.

ANDRE WADE (SERVICE SUPERVISOR)	Halliburton Energy Services	
Name and Title of Cemente	Cementing Company	Signature
6155 W. MURPHY ST	ODESSA TEXAS 79763	432-571-8700
Address	City State, Zip Code	Tel: Area Code Number
		Date: Mo. Day Yr. 2/10/2014

OPERATOR'S CERTIFICATE: I declare under penalties prescribed in Sec. 91.143, Texas Natural Resources Code, that I am authorized to make this certification, that I have knowledge of the well data and information presented in this report, and that data and facts presented on both sides of this form are true, correct, and complete, to the best of my knowledge. This certification covers all well data.

Maureen Kovacic	Regulatory Specialist	
Typed or Printed Name of Operator's Representative	Title	Signature
150 N. Dairy Ashford Houston Tx 77079	832-337-0953	06/13/2014
Address	City, State, Zip Code	Tel: Area Code Number
		Date: Mo. Day Yr.

Instruction to Form W-15, Cementing Report

IMPORTANT: Operators and cementing companies must comply with the requirements of the Commission's Statewide rules 8 (Water Protection), 13 (Casing, Cementing, Drilling, and Completion, and 14 (Well Plugging). For offshore operations, see the requirements of Rule 13 (c).

- A. What to file. An operator should file an original and one copy of the completed Form W-15 for each cementing company used on a well. The cementing of different casing strings on a well by one cementing company may be reported on one form. Form W-15 should be filed with the following:
- * An initial oil or gas completion report, Form W-2 or G-1, as required by Statewide or special field rules;
 - * Form W-4, Application for Multiple Completion, if the well is a multiple parallel casing completion; and
 - * Form W-3, Plugging Record, unless the W-3 is signed by the cementing company representative. When reporting dry holes, operators must complete Form W-15, in addition to Form W-3, to show any casing cemented in the hole.
- B. Where to file. The appropriate Commission District Office for the county in which the well is located.
- C. Surface casing. An operator must set and cement sufficient surface casing to protect all usable-quality water strata, as defined by the Texas Department of Water Resources, Austin. Before drilling a well in any field or area in which no field rules are in effect or in which surface casing requirements are not specified in the applicable rules, an operator must obtain a letter from the Department of Water Resources stating the protection depth. Surface casing should not be set deeper than 200 feet below the specified depth without prior approval from the Commission.
- D. Centralizers. Surface casing must be centralized at the shoe, above and below a stage collar or diverting tool, if run, and through usable-quality water zones. In nondeviated holes, a centralizer must be placed every fourth joint from the cement shoe to the ground surface or to the bottom of the cellar. All centralizers must meet API specifications.
- E. Exceptions and alternative casing programs. The District Director may grant an exception to the requirements of Statewide Rule 13. In a written application, an operator must state the reason for the requested exception and outline an alternate program for casing and cementing through the protection depth for strata containing usable-quality water. The District Director may approve, modify, or reject a proposed program. An operator must obtain approval of any exception before beginning casing and cementing operations.
- F. Intermediate and production casing. For specific technical requirements, operators should consult Statewide Rule 13 (b) (3) and (4).
- G. Plugging and abandoning. Cement plugs must be placed in the wellbore as required by Statewide Rule 14. The District Director may require additional cement plugs. For onshore or inland wells, a 10-foot cement plug must be placed in the top of the well, and the casing must be cut off three feet below the ground surface. All cement plugs, except the top plug, must have sufficient slurry volume to fill 100 feet of hole, plus ten percent for each 1,000 feet of depth from the ground surface to the bottom of the plug.

To plug and abandon a well, operators must use only cementers approved by the Director of Field Operations. Cementing companies, service companies, or operators can qualify as approved cementers by demonstrating that they are able to mix and pump cement in compliance with Commission rules and regulations.

Cementor: Fill in shaded areas
Operator: Fill in other items

Form W-15
Cementing Report
Rev. 4/1/83
HAL-1189

RAILROAD COMMISSION OF TEXAS
Oil and Gas Division


1. Operator's Name (As Shown on Form P-5, Organization Report)	2. RRC Operator No.	3. RRC District No.	4. County of Well Site
Shell Western E&P	774719	08	Winkler
5. Field Name (Wildcat or Exactly as Shown on RRC Records)	6. API No.	7. Drilling Permit No.	
Phantom (Wolfcamp)	42-495-33544	775589	
8. Lease Name	9. Rule 37 Case No.	10. Oil Lease/Gas ID No.	11. Well No.
University 20-10 WNK			1HN

CASING CEMENTING DATA:		SURFACE CASING	INTER-MEDIATE CASING	PRODUCTION CASING		MULTI-STAGE CEMENTING PROCESS	
				Single String	Multiple Parallel Strings	Tool	Shoe
12. Cementing Date			2/28/2014				
13. *Drilled hole size			8 3/4				
*Est. % wash or hole enlargement							
14. Size of casing (in. O.D.)			7				
15. Top of liner (ft)							
16. Setting depth (ft)			11934				
17. Number of centralizers used			57				
18. Hrs. waiting on cement before drill-out			+24				
1st Slurry	19. API cement used: No. of sacks ▶		570				
	Class ▶		H				
	Additives ▶		SEE REMARKS				
2nd Slurry	No. of sacks ▶		150				
	Class ▶		H				
	Additives ▶		SEE REMARKS				
3rd Slurry	No. of sacks ▶						
	Class ▶						
	Additives ▶						
1st	20. Slurry pumped: Volume (cu.ft.) ▶		1311				
	Height (ft.) ▶		8530.1				
2nd	Volume (cu.ft.) ▶		291				
	Height (ft.) ▶		1809.7				
3rd	Volume (cu.ft.) ▶						
	Height (ft.) ▶						
Total	Volume (cu.ft.) ▶		1602				
	Height (ft.) ▶		10339.8				
21. Was cement circulated to ground surface (or bottom of cellar) outside casing?			N				
22. Remarks LEAD- BENTONITE, KOL-SEAL, HR-800. TAIL- HALADR-344, SALT, KOL-SEAL, SA-1015.				Sales Order 901108813 Customer Name SHELL WESTERN E & P - EBUS Lease University 20-10 WNK Well Number 1H Winkler County			


OVER ▶

CEMENTING TO PLUG AND ABANDON	PLUG #1	PLUG #2	PLUG #3	PLUG #4	PLUG #5	PLUG #6	PLUG #7	PLUG #8
23. Cementing date								
24. Size of hole or pipe plugged (in.)								
25. Depth to bottom of tubing or drill pipe (ft.)								
26. Sacks of cement used (each plug)								
27. Slurry volume pumped (cu.ft.)								
28. Calculated top of plug (ft.)								
29. Measured top of plug, if tagged (ft.)								
30. Slurry wt. (lb/gal)								
31. Type cement								

CEMENTER'S CERTIFICATE: I declare under penalties prescribed in Sec. 91.143, Texas Natural Resources Code, that I am authorized to make this certification, that the cementing of casing and/or the placing of cement plugs in this well as shown in the report was performed by me or under my supervision, and that the cementing data and facts presented on both sides of this form are true, correct, and complete, to the best of my knowledge. This certification covers cementing data only.

MARK STILLWAGON SS-I		Halliburton Energy Services			
Name and Title of Cementer's Representative		Cementing Company		Signature	
6155 W MURPHY	ODESSA TX	79706	432-571-8600	2/28/2013	
Address	City	State	Zip Code	Tel. Area Code	Number Date: Mo Day Yr

OPERATOR'S CERTIFICATE: I declare under penalties prescribed in Sec. 91.143, Texas Natural Resources Code, that I am authorized to make this certification, that I have knowledge of the well data and information presented in this report, and that data and facts presented on both sides of this form are true, correct, and complete, to the best of my knowledge. This certification covers all well data.

Maureen Kovacic		Regulatory Specialist			
Typed or Printed Name of Operator's Representative		Title		Signature	
150 N. Dairy Ashford Houston TX	77079	832-337-0953		06/13/2014	
Address	City	State	Zip Code	Tel. Area Code	Number Date: Mo Day Yr

Instruction to Form W-15, Cementing Report

IMPORTANT: Operators and cementing companies must comply with the requirements of the Commission's Statewide rules 8 (Water Protection), 13 (Casing, Cementing, Drilling, and Completion, and 14 (Well Plugging). For offshore operations, see the requirements of Rule 13 (c).

A. What to file. An operator should file an original and one copy of the completed Form W-15 for each cementing company used on a well. The cementing of different casing strings on a well by one cementing company may be reported on one form. Form W-15 should be filed with the following:

- * An initial oil or gas completion report, **Form W-2 or G-1**, as required by Statewide or special field rules;
- * **Form W-4**, Application for Multiple Completion, if the well is a multiple parallel casing completion; and
- * **Form W-3**, Plugging Record, unless the W-3 is signed by the cementing company representative. When reporting dry holes, operators must complete **Form W-15, in addition to Form W-3, to show any casing cemented in the hole.**

B. Where to file. The appropriate Commission District Office for the county in which the well is located.

C. Surface casing. An operator must set and cement sufficient surface casing to protect all usable-quality water strata, as defined by the Texas Department of Water Resources, Austin. Before drilling a well in any field or area in which no field rules are in effect or in which surface casing requirements are not specified in the applicable rules, an operator must obtain a letter from the Department of Water Resources stating the protection depth. Surface casing should not be set deeper than 200 feet below the specified depth without prior approval from the Commission.

D. Centralizers. Surface casing must be centralized at the shoe, above and below a stage collar or diverging tool, if run, and through usable-quality water zones. In nondeviated holes, a centralizer must be placed every fourth joint from the cement shoe to the ground surface or to the bottom of the cellar. All centralizers must meet API specifications.

E. Exceptions and alternative casing programs. The District Director may grant an exception to the requirements of Statewide Rule 13. In a written application, an operator must state the reason for the requested exception and outline an alternate program for casing and cementing through the protection depth for strata containing usable-quality water. The District Director may approve, modify, or reject a proposed program. **An operator must obtain approval of any exception before beginning casing and cementing operations.**

F. Intermediate and production casing. For specific technical requirements, operators should consult Statewide Rule 13 (b) (3) and (4).

G. Plugging and abandoning. Cement plugs must be placed in the wellbore as required by Statewide Rule 14. The District Director may require additional cement plugs. For onshore or inland wells, a 10-foot cement plug must be placed in the top of the well, and the casing must be cut off three feet below the ground surface. All cement plugs, except the top plug, must have sufficient slurry volume to fill 100 feet of hole, plus ten percent for each 1,000 feet of depth from the ground surface to the bottom of the plug.

To plug and abandon a well, operators must use only cementers approved by the Director of Field Operations. Cementing companies, service companies, or operators can qualify as approved cementers by demonstrating that they are able to mix and pump cement in compliance with Commission rules and regulations.

RAILROAD COMMISSION OF TEXAS Oil and Gas Division		ELECTRIC LOG STATUS REPORT		FORM L-1	
Tracking No.: 107536		This facsimile L-1 was generated electronically from data submitted to the RRC.			
Instructions					
When to File Form L-1: <ul style="list-style-type: none">• with Forms G-1, W-2, and GT-1 for new and deepened gas, oil, and geothermal wells• with Form W-3 for plugged dry holes• when sending in a log which was held under a request for confidentiality and the period for confidentiality has not yet expired. When is Form L-1 NOT required: <ul style="list-style-type: none">• with Forms W-2, G-1, and GT-1 filed for injection wells, disposal wells, water supply wells, service wells, re-test wells, re-classifications, and plugbacks of oil, gas or geothermal wells• with Form W-3 for plugging of other than a dry hole			Where to File Form L-1: <ul style="list-style-type: none">• with the appropriate Commission district office Filling out Form L-1: <ul style="list-style-type: none">• Section I and the signature section must be filled out for all wells• complete only the appropriate part of Section II Type of log required: <ul style="list-style-type: none">• any wireline survey run for the purpose of obtaining lithology, porosity, or resistivity information• no more than one such log is required but it must be of the subject well• if such log is NOT run on the subject well, do NOT substitute any other type of log; just select Section II, Part A below		
SECTION I. IDENTIFICATION					
Operator Name: SHELL WESTERN E&P		District No. 08		Completion Date: 04/26/2014	
Field Name PHANTOM (WOLFCAMP)		Drilling Permit No. 775589			
Lease Name UNIVERSITY 20-10 WNK		Lease/ID No.		Well No. 1H	
County WINKLER		API No. 42- 495-33544			
SECTION II. LOG STATUS (Complete either A or B)					
<input type="checkbox"/> A. BASIC ELECTRIC LOG NOT RUN					
<input checked="" type="checkbox"/> B. BASIC ELECTRIC LOG RUN. (Select one)					
<div><input checked="" type="checkbox"/> 1. Confidentiality is requested and a copy of the header for each log that has been run on the well is attached.</div> <div><input type="checkbox"/> 2. Confidentiality already granted on basic electric log covering this interval (applicable to deepened wells only).</div> <div><input type="checkbox"/> 3. Basic electric log covering this interval already on file with Commission (applicable to deepened wells only).</div> <div><div><input type="checkbox"/> 4. Log attached to (select one):</div><div><div><input type="checkbox"/> (a) Form L-1 (this form). If the company/lease name on log is different from that shown in Section I, please enter name on log here: _____</div><div>Check here if attached log is being submitted after being held confidential. <input type="checkbox"/></div><div><input type="checkbox"/> (b) Form P-7, Application for Discovery Allowable and New Field Designation.</div><div><input type="checkbox"/> (c) Form W-4, Application for Multiple Completion:</div></div><div>Lease or ID No(s). _____</div><div>Well No(s). _____</div></div>					
Maureen Kovacic Signature SHELL WESTERN E&P Name (print)		Regulatory Specialist Title (832) 377-0953 06/13/2014 Phone Date			
-FOR RAILROAD COMMISSION USE ONLY-					

CERTIFICATE OF COMPLIANCE
AND TRANSPORTATION AUTHORITY

P-4

This facsimile P-4 was generated electronically from data submitted to the RRC.
A certification of the automated data is available in the RRC's Austin office.

Tracking No.: 107536

1. Field name exactly as shown on proration schedule PHANTOM (WOLFCAMP)		2. Lease name as shown on proration schedule UNIVERSITY 20-10 WNK					
3. Current operator name exactly as shown on P-5 Organization Report SHELL WESTERN E&P		4. Operator P-5 no. 774719	5. Oil Lse/Gas ID no.	6. County WINKLER	7. RRC district 08		
8. Operator address including city, state, and zip code PO BOX 576 HOUSTON, TX 77001		9. Well no(s) (see instruction E) 1H			11. Effective Date 04/26/2014		
		10. Classification <input checked="" type="checkbox"/> Oil <input type="checkbox"/> Gas <input type="checkbox"/> Other (see instruction A)					
12. Purpose of Filing. (Complete section a or b below.) (See instructions B and G) a. Change of: <input type="checkbox"/> operator <input type="checkbox"/> oil or condensate gatherer <input type="checkbox"/> gas gatherer <input type="checkbox"/> gas purchaser <input type="checkbox"/> gas purchaser system code <input type="checkbox"/> field name from _____ <input type="checkbox"/> lease name from _____ -- OR -- b. New RRC Number for: <input checked="" type="checkbox"/> oil lease <input type="checkbox"/> gas well Due to: <input type="checkbox"/> new completion or recompletion <input type="checkbox"/> reclass oil to gas <input type="checkbox"/> reclass gas to oil <input type="checkbox"/> other well (specify) _____ <input type="checkbox"/> consolidation, unitization, or subdivision (oil lease only)							
13. Authorized GAS WELL GAS or CASINGHEAD GAS Gatherer(s) and/or Purchaser(s). (See instruction G).							
Gatherer	Purchaser	Name of GAS WELL GAS or CASINGHEAD GAS Gatherer(s) or Purchaser(s) As Indicated in Columns to the Left (Attach an additional sheet in same format if more space is needed)			Purchaser's RRC Assigned System Code	Percent of Take	Full-well stream
X		DELAWARE BASIN JV GATHERING LLC(211490)				100.0	
	X	SHELL ENERGY NORTH AM. (US), LP(773822)			0001	100.0	
14. Authorized OIL or CONDENSATE Gatherer(s). (See instruction G).							
Name of OIL or CONDENSATE Gatherer(s) - List Highest Volume Gatherer First (Attach an additional sheet in same format if more space is needed)						Percent of Take	
EASTEX CRUDE COMPANY(239232)						100.0	
RRC USE ONLY: Reviewer's initials: _____ Approval date: _____							
15. PREVIOUS OPERATOR CERTIFICATION FOR CHANGE OF OPERATOR P-4 FILING. Being the PREVIOUS OPERATOR, I certify that operating responsibility for the well(s) designated in this filing, located on the subject lease has been transferred in its entirety to the above named Current Operator. I understand, as Previous Operator, that designation of the above named operator as Current Operator is not effective until this certificate is approved by the Commission.							
Name of Previous Operator		Signature					
Name (print)		<input type="checkbox"/> Authorized Employee of previous operator		<input type="checkbox"/> Authorized agent of previous operator (see instruction G)			
Title		Date		Phone with area code			
16. CURRENT OPERATOR CERTIFICATION. By signing this certificate as the Current Operator, I certify that all statements on this form are true and correct and I acknowledge responsibility for the regulatory compliance of the subject lease including plugging of well(s) pursuant to Rule 14. I further acknowledge that I assume responsibility for the physical operation, control, and proper plugging of each well designated in this filing. I also acknowledge that I will remain designated as the Current Operator until a new certificate designating a new Current Operator is approved by the Commission.							
SHELL WESTERN E&P		Maureen Kovacic					
Name (print)		Signature					
Regulatory Specialist		<input checked="" type="checkbox"/> Authorized Employee of current operator		<input type="checkbox"/> Authorized agent of current operator (see instruction G)			
Title		06/13/2014		(832) 377-0953			
E-mail Address (optional) maureen.kovacic@shell.com		Date		Phone with area code			

STATEMENT OF PRODUCTIVITY OF ACREAGE
ASSIGNED TO PRORATION UNITS

Form P-15

Tracking No.: 107536

This facsimile P-15 was generated electronically
from data submitted to the RRC.

The undersigned states that he is authorized to make this statement; that he has knowledge of the facts concerning the SHELL WESTERN E&P ,
OPERATOR
UNIVERSITY 20-10 WNK , No. 1H ; that such well is
LEASE WELL
completed in the PHANTOM (WOLFCAMP) Field, WINKLER County,
Texas and that the acreage claimed, and assigned to such well for proration purposes as
authorized by special rule and as shown on the attached certified plat embraces _____
640.0 - _____ acres which can reasonably be considered to be productive of hydrocarbons.

- CERTIFICATE -

I declare under penalties prescribed in Sec. 91.143, Texas Natural Resources Code, that I am authorized to make this report, that this report was prepared by me or under my supervision and direction, and that data and facts stated therein are true, correct, and complete, to the best of my knowledge,

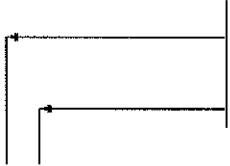

Date 06/13/2014 Signature Maureen Kovacic
Telephone (832) 377-0953 Title Regulatory Specialist
AREA CODE

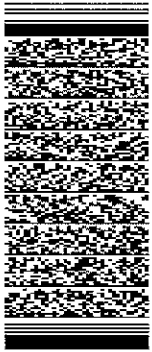
SlimPulse Gamma Ray

1in/100ft Measured Depth

Recorded Mode, Composite Log

Schlumberger

Company: Shell Western E&P			
Well:	University 20-10 WNK #1H		
Field:	Phantom (Wolfcamp)		
County:	Winkler		
State:	Texas		
Country:	United States of America		
Latitude:	31° 44' 11.689" N	APIN:	42-495-33544-0000
Longitude:	103° 19' 16.974" W	Rig Name:	Patterson 274
		Rig Type:	Land - Top Drive
FL:	NAD27 Texas State Plane, Central Zone, US Feet		
FL1:	Northing: 765296.23 ft US		
FL2:	Easting: 1071143.48 ft US		
<div>Log Measured From: - Drill Floor: 2824.50 ft</div> <div>Ground Level: 2796.00 ft</div> 			
		Permanent Datum: - Mean Sea Level	
Acquisition Dates:	19-Feb-2014 -- 11-Mar-2014		Other Services:
Log Interval:	11212.50(ft) to 16627.00(ft)		Directional Drilling
Index Types:	Measured Depth		Direction and Inclination (Surveys)
Index Scales:	1:1200 1" / 100'		
Depth Source:	Driller's Depth		
Depth Sensor:	3rd Party Depth		
Print Type:	Final		
Spud Date:	04-Feb-2014		



Disclaimer

THE USE OF AND RELIANCE UPON THIS RECORDED-DATA BY THE HEREIN NAMED COMPANY (AND ANY OF ITS AFFILIATES, PARTNERS, REPRESENTATIVES, AGENTS, CONSULTANTS AND EMPLOYEES) IS SUBJECT TO THE TERMS AND CONDITIONS AGREED UPON BETWEEN SCHLUMBERGER AND THE COMPANY, INCLUDING: (a) RESTRICTIONS ON USE OF THE RECORDED-DATA; (b) DISCLAIMERS AND WAIVERS OF WARRANTIES AND REPRESENTATIONS REGARDING COMPANY'S USE AND RELIANCE UPON THE RECORDED-DATA; AND (c) CUSTOMER'S FULL AND SOLE RESPONSIBILITY FOR ANY INFERENCE DRAWN OR DECISION MADE IN CONNECTION WITH THE USE OF THIS RECORDED-DATA.

Contents

1. Header
2. Disclaimer
3. Contents
4. Composite¹
- 4.1 Integration Summary
- 4.2 Composite Summary
- 4.3 Log (Telescope SlimPulse GR 1in MD RM)
- 4.4 Parameter Listing
5. Tail

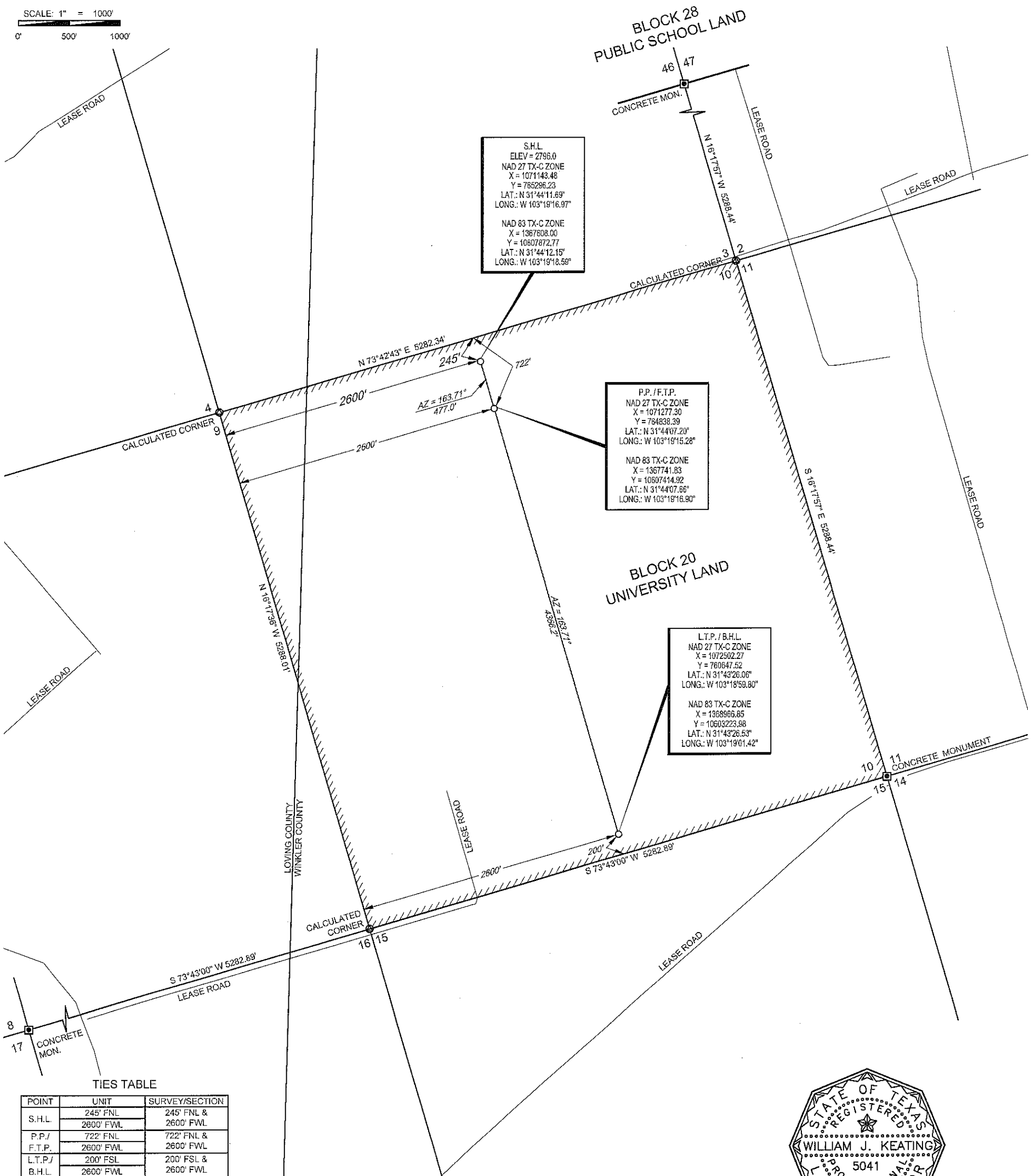
UNIVERSITY 20-10 WNK #1H
641.31 ACRES (MEASURED)
SECTION 10, BLOCK 20, UNIVERSITY LAND SURVEY
WINKLER COUNTY, TEXAS
WELL LOCATION

SHELL WESTERN
E&P

LEGEND

- UNIT BOUNDARY
COUNTY LINE
SURVEY/SECTION LINE
PROPOSED WELL PATH
ROAD WAY
CONCRETE MONUMENT
CALCULATED CORNER

SCALE: 1" = 1000'
0' 500' 1000'



TIES TABLE

POINT	UNIT	SURVEY/SECTION
S.H.L.	245' FNL & 2600' FWL	245' FNL & 2600' FWL
P.P./F.T.P.	722' FNL & 2600' FWL	722' FNL & 2600' FWL
L.T.P./B.H.L.	200' FSL & 2600' FWL	200' FSL & 2600' FWL

TOPOGRAPHIC
LOYALTY INNOVATION LEGACY

1400 EVERMAN PARKWAY, Ste. 197 • FT. WORTH, TEXAS 76140
TELEPHONE: (817) 744-7512 • FAX (817) 744-7548
TEXAS FIRM REGISTRATION NO. 10042504
2903 NORTH BIG SPRING • MIDLAND, TEXAS 79705
TELEPHONE: (432) 682-1653 OR (800) 767-1653 • FAX (432) 682-1743
TEXAS FIRM REGISTRATION NO. 10042500
WWW.TOPOGRAPHIC.COM



William J. Keating
WILLIAM J. KEATING, R.P.L.S. No. 5041
DECEMBER 10, 2013

UNIVERSITY 20-10 WNK #1H	REVISION:	
	NMM	12/03/2013
DATE: OCTOBER 25, 2013	NMM	12/10/2013
FILE: LO_UNIVERSITY_20-10_WNK_1H_REV2		
DRAWN BY: NMM		
SHEET: 1 OF 1		

- NOTES:
1. ORIGINAL DOCUMENT SIZE: 11" X 17"
 2. ALL BEARINGS, DISTANCES, AND COORDINATE VALUES CONTAINED HEREIN ARE GRID BASED UPON THE TEXAS STATE PLANE COORDINATE SYSTEM, CENTRAL ZONE, U.S. SURVEY FEET, NORTH AMERICAN DATUM 1927.
 3. THIS LOCATION AND/OR UNIT/LEASE BOUNDARY HAS BEEN CAREFULLY SURVEYED ON THE GROUND UNDER MY SUPERVISION AND IS TRUE AND CORRECT TO THE BEST OF MY KNOWLEDGE ACCORDING TO THE EVIDENCE, OFFICIAL SURVEY RECORDS, MAPS, AND OTHER DATA PROVIDED BY SHELL WESTERN E&P. THIS PLAT WAS CREATED FOR THE SOLE PURPOSE OF FILING A PERMIT WITH THE RAILROAD COMMISSION OF TEXAS AND SHOULD NOT BE CONSTRUED AS A "BOUNDARY SURVEY" IN COMPLIANCE WITH T.B.P.L.S. MINIMUM STANDARDS OF PROCEDURES FOR BOUNDARY SURVEYS. THIS CERTIFICATION IF MADE AND LIMITED TO THOSE PERSONS OR ENTITIES SHOWN ON THE FACE OF THIS PLAT IS NON-TRANSFERABLE. THIS SURVEY IS CERTIFIED FOR THIS TRANSACTION ONLY.
 4. ALL ELEVATION VALUES CONTAINED HEREON ARE ORTHOMETRIC ONLY, BASED UPON THE NORTH AMERICAN VERTICAL DATUM OF 1988 (NAVD 88), U.S. SURVEY FEET.
 5. OWNERSHIP OF ANY EXCESS ACREAGE SHOWN WAS NOT DETERMINED BY THIS SURVEYOR.

- NOTES CONT'D:
6. THE LEASE AND WELL SHOWN HEREON ARE LOCATED APPROXIMATELY ±9.5 MILES WEST OF THE CITY/TOWNSHIP/MUNICIPALITY OF WINKLER WITHIN THE COUNTY OF WINKLER IN THE STATE OF TEXAS.
 7. THE PRELIMINARY LOCATION HAS BEEN CAREFULLY SURVEYED ON THE GROUND DURING THE DATE OF NOVEMBER 25, 2013, AT A GROUND LEVEL ELEVATION OF 2795.99 SURVEY FEET.
 8. S.H.L. = SURFACE HOLE LOCATION
 9. P.P. = POINT OF PENETRATION
 10. F.T.P. = FIRST TAKE POINT
 11. L.T.P. = LAST TAKE POINT
 12. B.H.L. = BOTTOM HOLE LOCATION