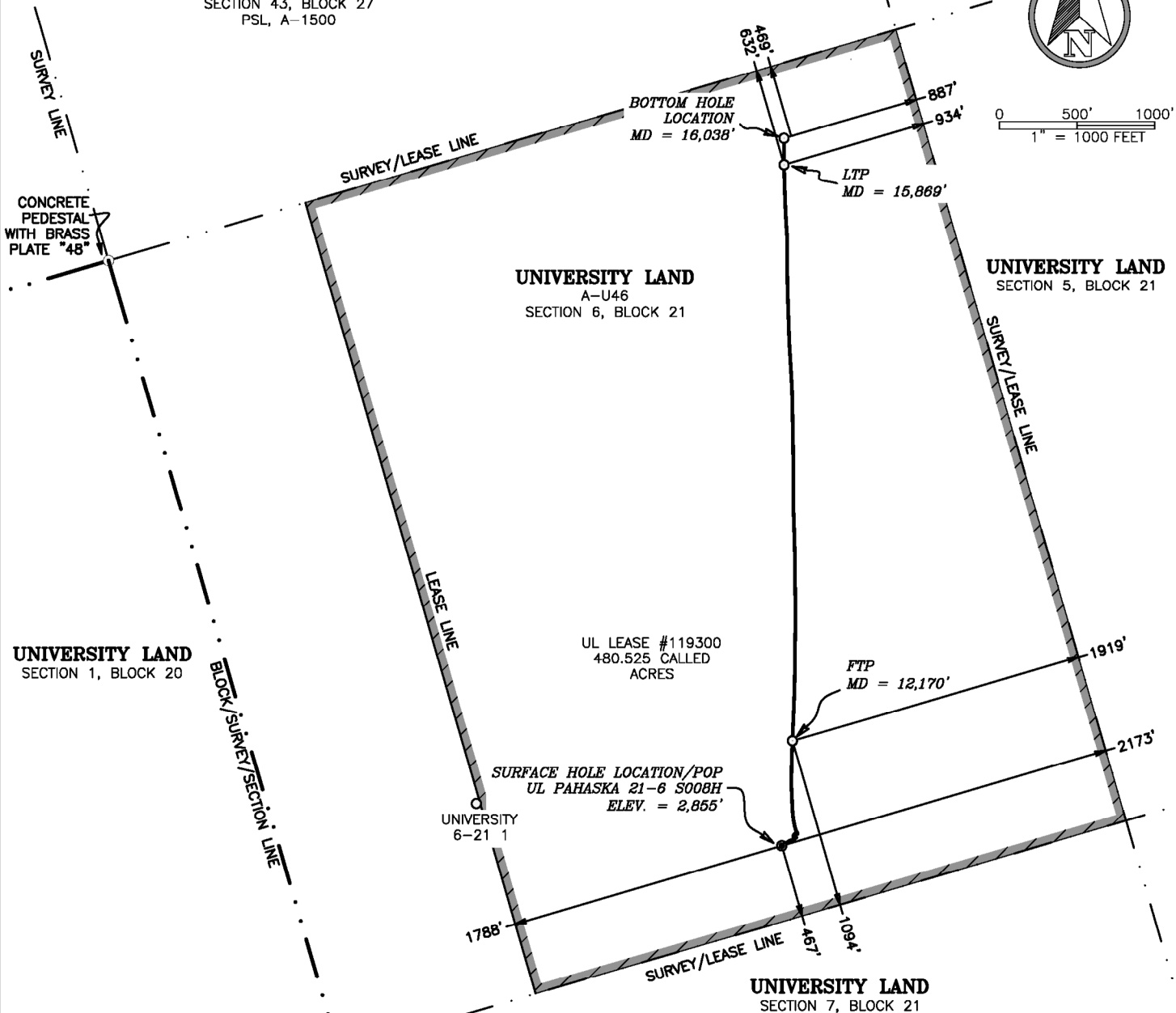


MRS. M. GRAHAM
SECTION 43, BLOCK 27
PSL, A-1500



0 500' 1000'
1" = 1000 FEET



LEASE NUMBER	LESSOR	CALLED ACREAGE	LATERAL LENGTH
#119300	UNIVERSITY LANDS, SECTION 6	480.53	5229.90'
TOTAL		480.53	5229.90'

WELL LOCATION INFORMATION:

SHL/POP	LTP
467' FSL & 2173' FEL	632' FNLL & 934' FELL
467' FSLL & 1788' FWLL	NAD 27 TXC
NAD 27 TXC	Y = 774,935.36
Y = 770,566.79	X = 1,086,654.48
X = 1,086,639.63	LAT. = 31.764205 °N
LAT. = 31.752199 °N	LONG. = 103.272327 °W
LONG. = 103.272003 °W	NAD 83 TXC
NAD 83 TXC	Y = 10,617,512.41
Y = 10,613,143.74	X = 1,383,118.52
X = 1,383,103.72	LAT. = 31.764335 °N
LAT. = 31.752329 °N	LONG. = 103.272777 °W
LONG. = 103.272453 °W	BHL
FTP	469' FNL & 887' FEL
1094' FSLL & 1919' FELL	469' FNLL & 887' FELL
NAD 27 TXC	NAD 27 TXC
Y = 771,239.88	Y = 775,104.33
X = 1,086,708.09	X = 1,086,653.71
LAT. = 31.754054 °N	LAT. = 31.764670 °N
LONG. = 103.271840 °W	LONG. = 103.272343 °W
NAD 83 TXC	NAD 83 TXC
Y = 10,613,816.84	Y = 10,617,681.38
X = 1,383,172.18	X = 1,383,117.75
LAT. = 31.754183 °N	LAT. = 31.764799 °N
LONG. = 103.272290 °W	LONG. = 103.272794 °W



GENERAL NOTES

- COORDINATES SHOWN ARE BASED ON TEXAS PLANE COORDINATE SYSTEM OF NAD 27, TEXAS CENTRAL ZONE 4203
- VERTICAL DATUM IS NAVD 88
- LATITUDE AND LONGITUDE ARE NAD 27 AS SHOWN
- AREA, DISTANCES, AND COORDINATES ARE "GRID".
- UNITS ARE UNITED STATES SURVEY FOOT.
- ALL LEASE AND TRACT INFORMATION SHOWN HERE ON IS DONE SO BY LIMITED DEED RECORD INFORMATION ONLY. ALL ACREAGES SHOWN ARE BY DEED AND LEASE CALL, EXCEPT WHERE NOTED. THIS IS NOT IN ANY WAY A "BOUNDARY SURVEY".

I HEREBY STATE THAT THIS PLAT
SHOWS THE SUBJECT SURFACE
LOCATION AS REQUESTED BY THE CLIENT.

MARK DILLON HARP
REGISTERED PROFESSIONAL LAND SURVEYOR
STATE OF TEXAS NO. 6445

PLAT OF:

AN AS-DRILLED WELL LOCATION PLAT FOR:
PERCUSSION PETROLEUM OPER II, LLC.
UL PAHASKA 21-6 S008H

SITUATED IN THE UNIVERSITY LANDS SURVEY, A-U46,
SECTION 6, BLOCK 21, AND BEING APPROXIMATELY 6.9
MILES NORTHWEST OF WINK IN WINKLER COUNTY, TEXAS.

DATE: 11-18-2022
DRAWN BY: CH
CHECKED BY: GG
FIELD CREW: N/A
PROJECT NO: 2022101661
SCALE: 1" = 1000'
SHEET: 1 OF 1
REVISION: 0



550 Bailey Ave., 205 - Fort Worth, TX 76107
Ph: 817.349.9800 - Fax: 979.732.5271
TBPE Firm 17957 | TBPLS Firm 10193887
www.fscinc.net
© COPYRIGHT 2016 - ALL RIGHTS RESERVED