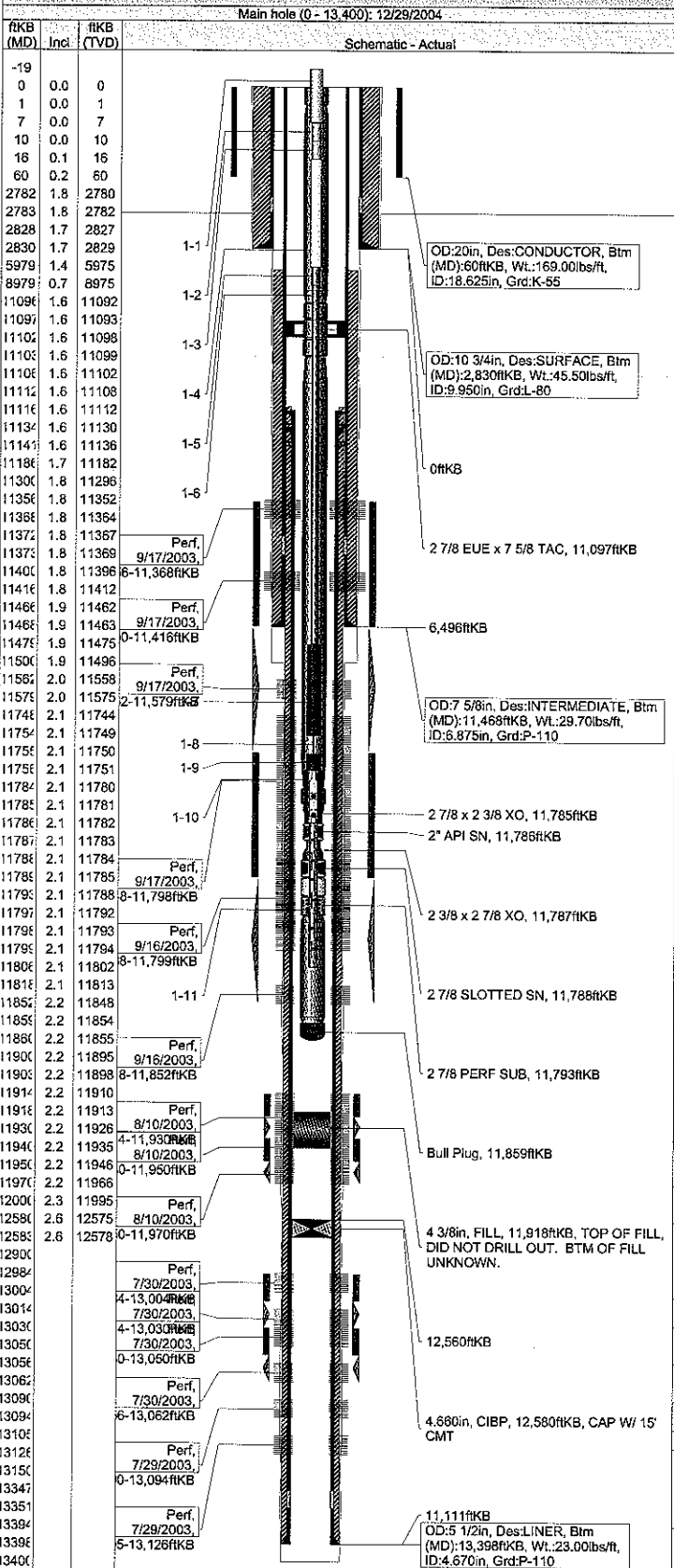


WellView Reports - FOC Well Summary

UNIVERSITY #21-265 Apollo Field

API/UWI 4249532917	Operator Forest Oil Corporation
County Winkler	State/Province Texas
KB-Grd (ft) KB Elev (ft) Gr Elev (ft) PBDT (ft) KB	35.00 2785.00 2750.00 11,918.0
Spud Date 5/8/2003	
Surface Legal Location SEC 26 BLK 21 ULS	N/S Dist. (ft) 1100.0
	N/S Ref. FSL
	E/W Dist. (ft) 1650.0
	E/W Ref. FWL



Wellbores: Main hole (0 - 13,400)	
Hole API #	Vertical Section Direction (°)
Size (in)	Top (ftKB)
14 3/4	0.0
9 7/8	2,830.0
6 3/4	11,500.0
	13,400.0

Casing: CONDUCTOR, 60.0ftKB	
Run Date 5/5/2003	Centralizers 19
OD (in)	Grade
20	K-55
Wt (lbs/ft)	Item Des
169.00	CASING
Top (ftKB)	Btm (ftKB)
0.0	60.0
Jts	1

Casing: SURFACE, 2,830.0ftKB	
Run Date 5/13/2003	Centralizers 19
OD (in)	Grade
10 3/4	L-80
Wt (lbs/ft)	Item Des
45.50	CASING
Top (ftKB)	Btm (ftKB)
0.0	2,782.0
Jts	62
10 3/4	L-80
Wt (lbs/ft)	Item Des
45.50	FLOAT COLLAR
Top (ftKB)	Btm (ftKB)
2,782.0	2,783.5
Jts	1
10 3/4	L-80
Wt (lbs/ft)	Item Des
45.50	CASING
Top (ftKB)	Btm (ftKB)
2,783.5	2,828.5
Jts	1
10 3/4	L-80
Wt (lbs/ft)	Item Des
45.50	Guide Shoe
Top (ftKB)	Btm (ftKB)
2,828.5	2,830.0
Jts	1

Casing: INTERMEDIATE, 11,468.0ftKB	
Run Date 6/14/2003	Centralizers 60
OD (in)	Grade
7 5/8	P-110
Wt (lbs/ft)	Item Des
29.70	CASING
Top (ftKB)	Btm (ftKB)
0.0	11,371.6
Jts	247
7 5/8	P-110
Wt (lbs/ft)	Item Des
29.70	FLOAT COLLAR
Top (ftKB)	Btm (ftKB)
11,371.6	11,373.1
Jts	1
7 5/8	P-110
Wt (lbs/ft)	Item Des
29.70	CASING
Top (ftKB)	Btm (ftKB)
11,373.1	11,466.3
Jts	2
7 5/8	P-110
Wt (lbs/ft)	Item Des
29.70	Shoe
Top (ftKB)	Btm (ftKB)
11,466.3	11,468.0
Jts	1

Casing: LINER, 13,398.0ftKB	
Run Date 7/13/2003	Centralizers 60
OD (in)	Grade
5 1/2	P-110
Wt (lbs/ft)	Item Des
23.00	Liner Hanger
Top (ftKB)	Btm (ftKB)
11,115.8	11,134.1
Jts	1
5 1/2	P-110
Wt (lbs/ft)	Item Des
23.00	HANGER & PUP
Top (ftKB)	Btm (ftKB)
11,134.1	11,140.6
Jts	1
5 1/2	P-110
Wt (lbs/ft)	Item Des
23.00	Casing Joints
Top (ftKB)	Btm (ftKB)
11,140.6	11,186.0
Jts	1
5 1/2	P-110
Wt (lbs/ft)	Item Des
23.00	CASING
Top (ftKB)	Btm (ftKB)
11,186.0	13,347.6
Jts	47
5 1/2	P-110
Wt (lbs/ft)	Item Des
23.00	FLOAT COLLAR
Top (ftKB)	Btm (ftKB)
13,347.6	13,350.7
Jts	1
5 1/2	P-110
Wt (lbs/ft)	Item Des
23.00	CASING
Top (ftKB)	Btm (ftKB)
13,350.7	13,394.4
Jts	1
5 1/2	P-110
Wt (lbs/ft)	Item Des
23.00	Shoe
Top (ftKB)	Btm (ftKB)
13,394.4	13,398.0
Jts	1

Cement: 10 3/4 SURFACE, casing, 5/14/2003 04:30	
Cementing Company	Evaluation Method
Stg No.	Description
1	
Top (ftKB)	Btm (ftKB)
0.0	2,843.1
Full Rtn	Top Meas Meth
Yes	
Type	Class
LEAD	855
Yield (ft/sack)	2.91
Density (lb/gal)	11.4
V (bbl)	444.0
Fluid Des	
TAIL	393
Yield (ft/sack)	1.64
Density (lb/gal)	13.5
V (bbl)	115.0

Cement: 7 5/8" INTERMED, casing, 6/13/2003 00:00	
Cementing Company	Evaluation Method
Stg No.	Description
1	
Top (ftKB)	Btm (ftKB)
6,500.0	11,468.0
Full Rtn	Top Meas Meth
Yes	
Type	Class
LEAD	750
Yield (ft/sack)	2.45
Density (lb/gal)	11.9
V (bbl)	327.0
Fluid Des	FLOCELE 3/8, HR-5 0.1%
TAIL	222
Yield (ft/sack)	1.18
Density (lb/gal)	15.6
V (bbl)	47.0
Fluid Des	0.5% HALAD(R)-9; 0.1% HR-5

Cement: 5 1/2 PROD LINER, casing, 7/13/2003 00:00	
Cementing Company	Evaluation Method
Stg No.	Description
1	
Top (ftKB)	Btm (ftKB)
11,115.0	13,398.0
Full Rtn	Top Meas Meth
Yes	
Type	Class
LEAD	255
Yield (ft/sack)	1.19
Density (lb/gal)	15.6
V (bbl)	54.0
Fluid Des	0.6% HALAD(R)-344, 50 LB; 0.2% SCR-100, 0.3% SUPER CBL, 0.3% CFR-3, W/O DEFOAMER
TAIL	

Cement: CAP, plug, 8/9/2003 10:00	
Cementing Company	Evaluation Method
Stg No.	Description
1	15' CAP
Top (ftKB)	Btm (ftKB)
12,565.0	12,580.0
Full Rtn	Top Meas Meth
Yes	Wireline Tag

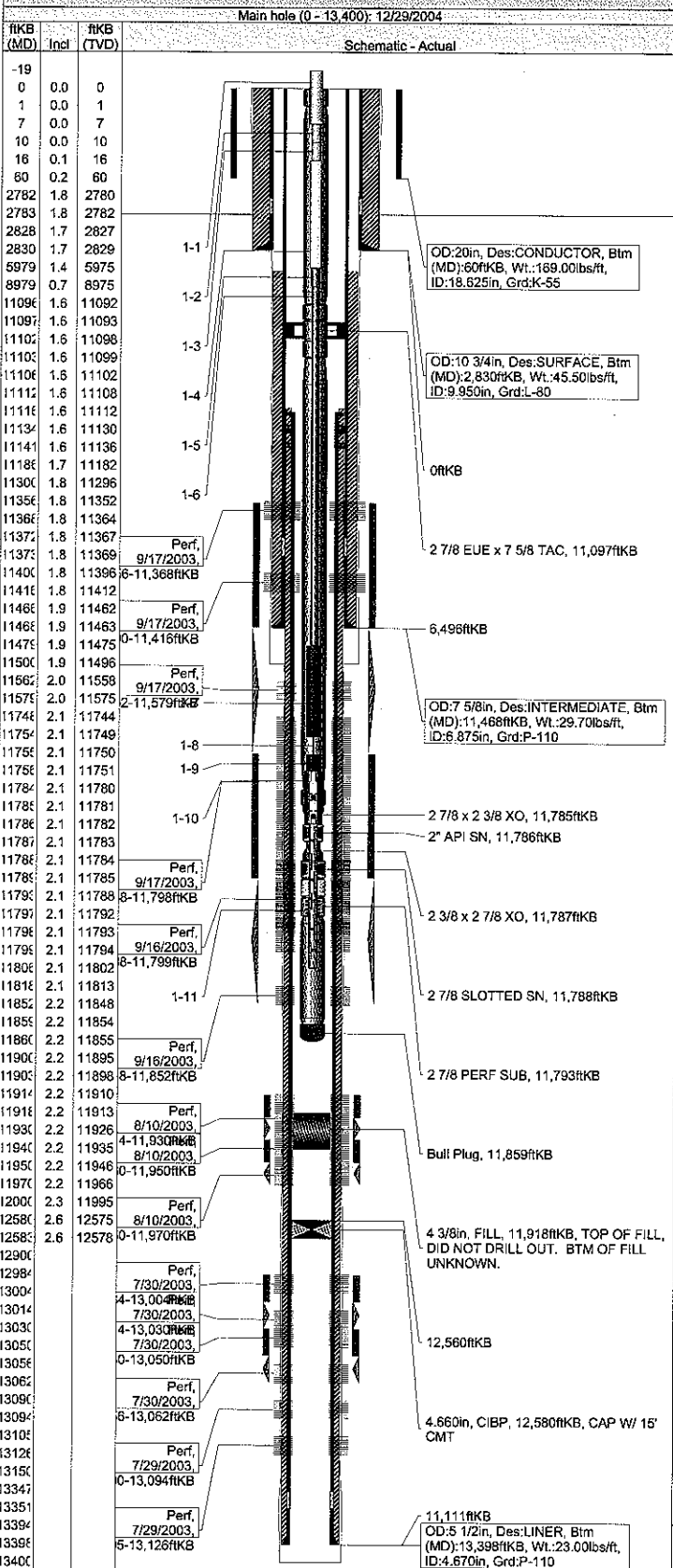
Other In Hole	
OD (in)	Des
4.66	CIBP
Top (ftKB)	Btm (ftKB)
12,580.0	12,583.0
ID (in)	Make
4 3/8	COMPOSITE PLUG
Top (ftKB)	Btm (ftKB)
11,900.0	11,903.0
4 3/8	FILL
Top (ftKB)	Btm (ftKB)
11,918.0	11,940.0

Perforations	
Date	Top (ftKB)
9/17/2003	11,356.0
Btm (ftKB)	11,368.0
Shot	Shot
Dens	Total
shots/ft	
4.0	48
Zone	Comment
WOLFCAMP, Main hole (0 - 13,400)	

Data last updated on: 2/25/2005 3:15 PM GMT
Printed on Friday, February 25, 2005

WellView Reports - FOC Well Summary

UNIVERSITY #21-265 Apollo Field



Perforations					
Date	Top (ftKB)	Btm (ftKB)	Shot Dens shots/ft	Shot Total	Zone
9/17/2003	11,400.0	11,416.0	4.0	64	WOLFCAMP, Main hole (0 - 13,400)
9/17/2003	11,562.0	11,579.0	4.0	68	WOLFCAMP, Main hole (0 - 13,400)
9/17/2003	11,748.0	11,798.0	4.0	200	WOLFCAMP, Main hole (0 - 13,400)
9/16/2003	11,788.0	11,799.0	4.0	44	WOLFCAMP, Main hole (0 - 13,400)
9/16/2003	11,818.0	11,852.0	4.0	136	WOLFCAMP, Main hole (0 - 13,400)
8/10/2003	11,914.0	11,930.0	4.0	64	STRAWN, Main hole (0 - 13,400)
8/10/2003	11,930.0	11,950.0	4.0	80	STRAWN, Main hole (0 - 13,400)
8/10/2003	11,950.0	11,970.0	4.0	80	STRAWN, Main hole (0 - 13,400)
7/30/2003	12,984.0	13,004.0	4.0	80	ATOKA, Main hole (0 - 13,400)
7/30/2003	13,014.0	13,030.0	4.0	64	ATOKA, Main hole (0 - 13,400)
7/30/2003	13,030.0	13,050.0	4.0	80	ATOKA, Main hole (0 - 13,400)
7/30/2003	13,056.0	13,062.0	4.0	24	ATOKA, Main hole (0 - 13,400)
7/29/2003	13,090.0	13,094.0	4.0	16	ATOKA, Main hole (0 - 13,400)
7/29/2003	13,105.0	13,126.0	4.0	84	ATOKA, Main hole (0 - 13,400)

1. Pad					
Date	Top (ftKB)	Bottom (ftKB)	Fluid	V(pumped) (bbl)	
8/4/2003	12,984.0	13,062.0	15% HCl, Acid	500.00	

1. Displacement					
Date	Top (ftKB)	Bottom (ftKB)	Fluid	V(pumped) (bbl)	
9/5/2003	11,914.0	11,970.0	15% HCl, Acid	6500.00	

1. Displacement					
Date	Top (ftKB)	Bottom (ftKB)	Fluid	V(pumped) (bbl)	
9/18/2003	11,356.0	11,852.0	15% HCl, Acid	18500.00	

2. Displacement					
Date	Top (ftKB)	Bottom (ftKB)	Fluid	V(pumped) (bbl)	
8/4/2003	12,984.0	13,062.0	15% HCl, Acid	8500.00	

Tubing - Production set at 11,860.0ftKB on 12/28/2004 20:00					
Run Date					
12/28/2004					

Tubing Components									
OD (in)	Wt (lbs/ft)	Grade	Jts	Len (ft)	Top (ftKB)	Btm (ftKB)	Item Des		
2 7/8	7.90	L-80	1	1.00	0.0	1.0	XO PH-6 PIN to 8rd EUE PIN		
2 7/8	7.90	L-80	356	11095.00	1.0	11,096.0	2 7/8" PH-6		
2 7/8	7.90	L-80	1	1.00	11,096.0	11,097.0	XO PH-6 PIN to 8rd EUE PIN		
2 7/8	7.90	L-80	1	5.00	11,097.0	11,102.0	2 7/8 EUE x 7 5/8 TAC		
2 7/8	7.90	L-80	1	1.00	11,102.0	11,103.0	XO PH-6 PIN to 8rd EUE PIN		
2 7/8	7.90	L-80	22	681.00	11,103.0	11,784.0	Tubing		
2 7/8	7.90	L-80	1	1.00	11,784.0	11,785.0	XO PH-6 PIN to 8rd EUE PIN		
2 3/8	7.90	L-80	1	1.00	11,785.0	11,786.0	2 7/8 x 2 3/8 XO		
2 3/8	7.90	L-80	1	1.00	11,786.0	11,787.0	2" API SN		
2 3/8	7.90	L-80	1	1.00	11,787.0	11,788.0	2 3/8 x 2 7/8 XO		
2 7/8	7.90	L-80	1	1.00	11,788.0	11,789.0	2 7/8 SLOTTED SN		
2 7/8	7.90	L-80	1	4.00	11,789.0	11,793.0	2 7/8 TBG SUB		
2 7/8	7.90	L-80	1	4.00	11,793.0	11,797.0	2 7/8 PERF SUB		
2 7/8	6.50	J-55	2	62.00	11,797.0	11,859.0	2 7/8 MAC		
2 7/8	7.90	L-80	1	1.00	11,859.0	11,860.0	Bull Plug		

Rod on 12/29/2004 18:00					
Run Date					
12/29/2004					

Rod Components					
OD (in)	Grade	Jts	Top (ftKB)	Item Des	
1 1/2		1	-19.5	Polished Rod	
1		1	6.5	Pony Rod	
1		1	10.5	Pony Rod	
1 1/4		159	16.5	Fiberglass Sucker Rod	
1 7/8		120	5,979.0	Sucker Rod	
7/8 7/8		100	8,979.0	Sucker Rod	
1 5/8 C		11	11,479.0	Sinker Bar	
1 5/8 C		1	11,754.0	33k 7/8" Shear Tool	
1 5/8 C		25	11,755.0	Sinker Bar	
2		1	11,756.0	2 x 125 x RHBC x 30-6-0	
1		1	11,786.0	1" x 20' GA	

Data last updated on 2/25/2005 3:15 PM GMT

Printed on Friday, February 25, 2005

WellView Reports - Schematic - Current

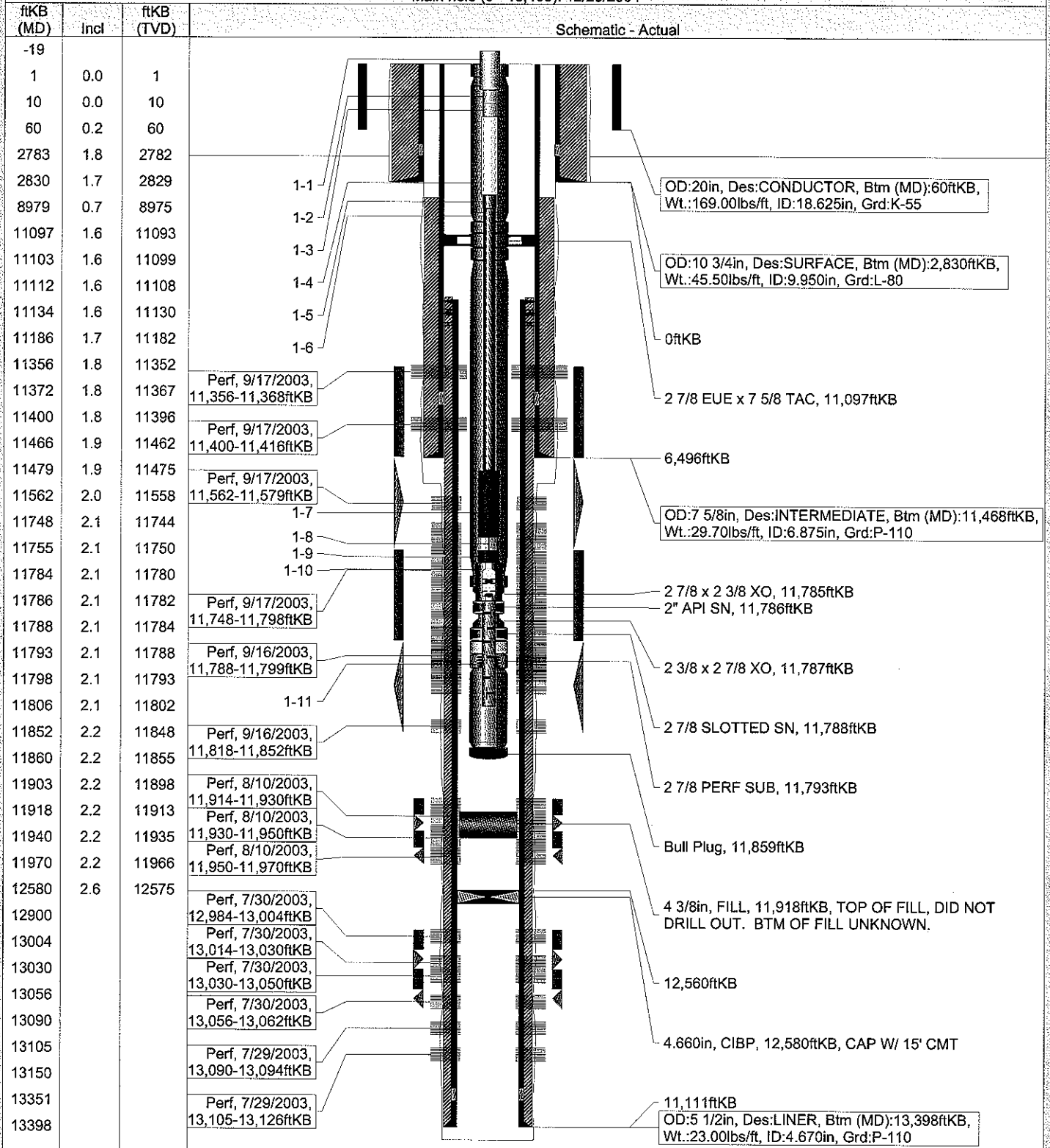
Well Name: UNIVERSITY #21-265

Surface Legal Location SEC 26 BLK 21 ULS	Field Name Apollo	Area	State/Province Texas	License No.	Current Well Status
KB Elevation (ft) 2785.00	Ground Elevation (ft) 2750.00	Casing Flange Elevation (ft) 30.00	KB-Ground Distance (ft) 35.00	KB-Casing Flange Distance (ft) 2755.00	Plug Back Total Depth (ftKB) 11,918.0

Most Recent Job

Primary Job Type INSTALL PUMPING UNIT	Start Date 12/6/2004	End Date
--	-------------------------	----------

Main hole (0 - 13,400): 12/29/2004



1/5/2005	21.33	0	150	1	0	0	0	Placed well on pump
1/6/2005	0	0	169	1	0	0	0	
1/7/2005	0	0	153.39	1	0	0	0	
1/8/2005	0	0	161	1	0	0	0	
1/9/2005	17	0	151	1	0	0	0	
1/10/2005	23.33	0	133	1	0	0	0	
1/11/2005	11	0	143	1	0	0	0	
1/12/2005	18	0	133	1	0	0	0	
1/13/2005	23.33	0	143	1	0	0	0	
1/14/2005	20.67	0	143	1	0	0	0	
1/15/2005	10	0	163	1	0	0	0	
1/16/2005	33.33	0	196	1	0	0	0	
1/17/2005	245	0	163	1	0	0	0	
1/18/2005	72.12	0	111	1	0	0	0	
1/19/2005	50.42	0	117	1	0	0	0	
1/20/2005	156.67	0	158	1	0	0	0	
1/21/2005	61.01	0	133	1	0	0	0	
1/22/2005	28.33	0	139	1	0	0	0	
1/23/2005	83.33	0	144	1	0	0	0	
1/24/2005	48.33	0	131	1	0	0	0	
1/25/2005	46.69	0	133	1	0	0	0	
1/26/2005	48.33	0	126	1	0	0	0	
1/27/2005	63.33	23	147	1	0	0	0	Opened to Low pressure gathering system
1/28/2005	44.19	17	135	1	0	0	0	
1/29/2005	51.67	13	143	1	0	0	0	
1/30/2005	53.33	18	150	1	0	0	0	
1/31/2005	40	12	161	1	0	0	0	
2/1/2005	71.67	20	153	1	0	0	0	
2/2/2005	36.55	57	164	1	0	0	0	
2/3/2005	46.67	58	160	1	0	0	0	
2/4/2005	26.67	135	174	1	0	0	0	
2/5/2005	58.33	113	161	1	0	0	0	
2/6/2005	72.75	121	157	1	0	0	0	
2/7/2005	43.33	119	177	1	0	0	0	
2/8/2005	55.83	121	171	1	0	0	0	
2/9/2005	55	109	162	1	0	0	0	
2/10/2005	28.33	128	169	1	0	0	0	
2/11/2005	36.67	120	161	1	0	0	0	
2/12/2005	39.5	119	111.9	1	0	0	0	
2/13/2005	38.33	79	103	1	0	0	0	
2/14/2005	60	121	110	1	0	0	0	
2/15/2005	46.67	111	119	1	0	0	0	
2/16/2005	50	133	124	1	0	0	0	
2/17/2005	30	117	133	1	0	0	0	
2/18/2005	42.77	118	141	1	0	0	0	
2/19/2005	36.67	118	133	1	0	0	0	
2/20/2005	31.67	116	131	1	0	0	0	
2/21/2005	16.67	123	143	1	0	0	0	
2/22/2005	86.74	115	167	1	0	0	0	
2/23/2005	53.33	124	173	1	0	0	0	
2/24/2005	0	0	0	1	0	0	0	