

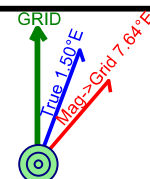


Job Number: KD231114
Company: Continental Resources, INC
Lease/Well: UTL 0708E #0605H
Location: 9.2 miles NW direction from Pyote
Rig Name: Transcend 4
State/County: Texas/ Ward
Country: USA
API Number: 42-475-38543

Elev. GL: 2765.00 ft **RKB:** 10.00 ft
System: US State Plane 1927 (Exact solution)
Group: Texas Central 4203
Datum: CLARKE 1866
Mag. Decl.: 6.15° (C:\HawkEye\IGRF2020.mif)
Grid Conv.: -1.49897 W
Date: Monday, April 3, 2023



Calculated by HawkEye Software
Minimum Curvature Method
Vertical Section Plane 0.00°
Northing (US ft): 722638.80 Easting (US ft): 1094212.20
Latitude: 31°37'15.7168" N Longitude: -103°14'37.0198" W
Direction Reference: Grid North



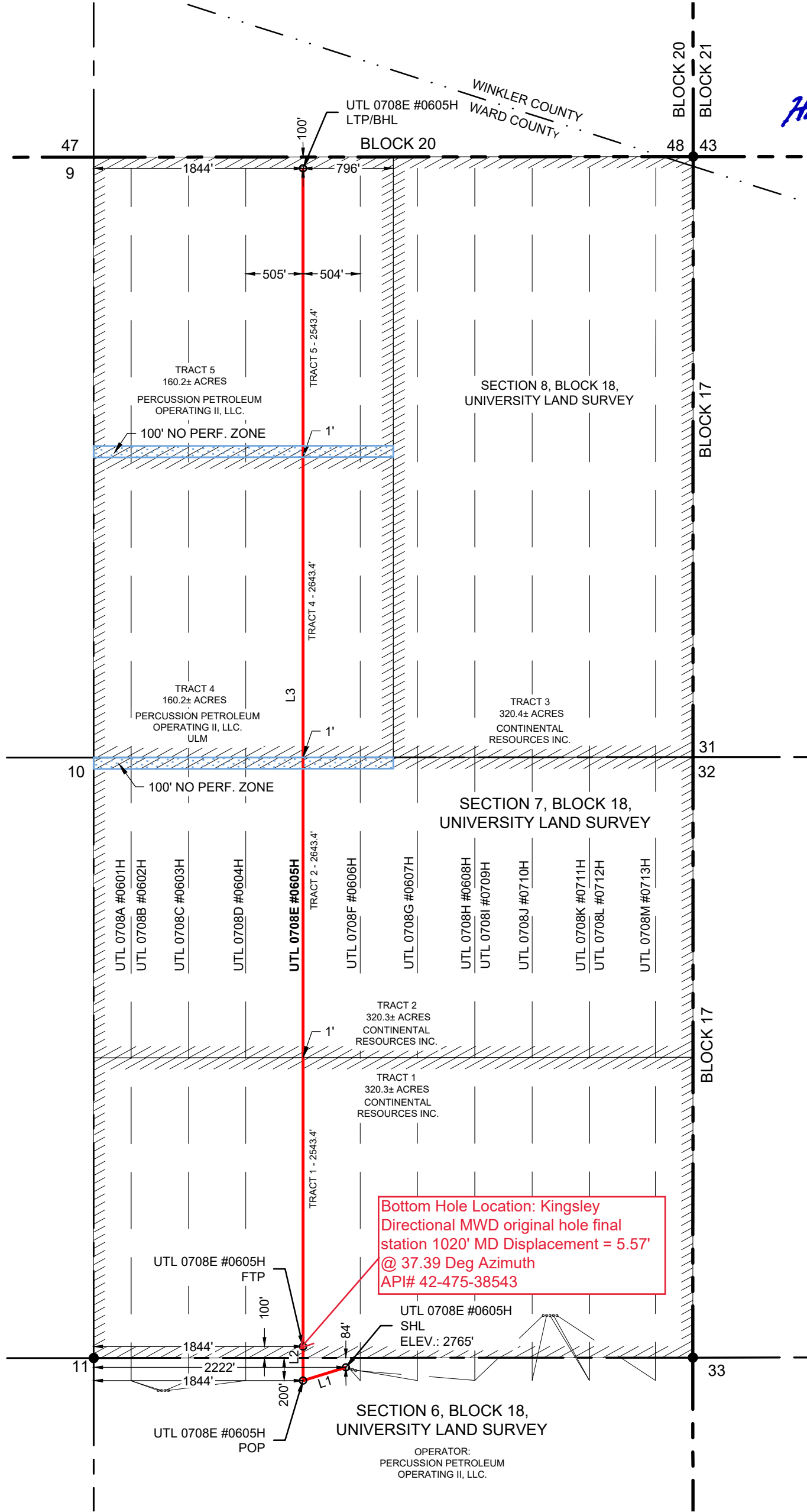
#	Measured Depth (Ft)	INC Deg	AZM Deg	TVD (Ft)	VS (Ft)	NS (Ft)	EW (Ft)	Closure Dir Deg	Closure (Ft)
Tie-In Data									
1	0.00	0.00	0.00	0.00	0.00	0.00	0.00	0.00	0.00
2	146.00	0.30	15.20	146.00	0.37	0.37	0.10	15.20	0.38
3	233.00	0.40	29.60	233.00	0.85	0.85	0.31	19.97	0.91
4	323.00	0.50	47.90	322.99	1.39	1.39	0.76	28.57	1.58
5	418.00	0.70	28.90	417.99	2.18	2.18	1.34	31.72	2.56
6	512.00	0.40	17.10	511.99	2.99	2.99	1.72	29.88	3.45
7	606.00	0.50	31.40	605.98	3.66	3.66	2.03	29.03	4.18
8	701.00	0.40	6.80	700.98	4.34	4.34	2.28	27.77	4.90
9	795.00	0.40	2.50	794.98	4.99	4.99	2.34	25.09	5.51
10	889.00	0.40	73.60	888.98	5.41	5.41	2.67	26.23	6.03
11	983.00	0.70	156.40	982.97	4.98	4.98	3.21	32.82	5.92
12	1020.00	1.10	166.70	1019.97	4.43	4.43	3.38	37.39	5.57
TD Projection to BIT									
13	1070.00	1.10	166.70	1069.96	3.49	3.49	3.60	45.90	5.02

UTL 0708E #0605H	NORTHING (Y) (NAD 27)	EASTING (X) NAD 27)	LATITUDE (NAD 27)	LONGITUDE (NAD 27)	SECTION LINE		SECTION LINE		LEASE LINE		LEASE LINE		SECTION
					FOOTAGE	FNL/FSL	FOOTAGE	FEL/FWL	FOOTAGE	FNL/FSL	FOOTAGE	FEL/FWL	
SURFACE HOLE LOCATION (SHL)	722638.8'	1094212.2'	31.621033°	-103.243617°	84'	FNL	2222'	FWL	84'	FNL	2222'	FWL	6
POINT OF PENETRATION (POP)	722420.6'	1093882.1'	31.620409°	-103.244659°	200'	FNL	1844'	FWL	200'	FNL	1844'	FWL	6
FIRST TAKE POINT (FTP)	722708.9'	1093798.0'	31.621195°	-103.244953°	100'	FSL	1844'	FWL	100'	FSL	1844'	FWL	7
LAST TAKE POINT/BOTTOM HOLE LOCATION (LTP/BHL)	732667.7'	1090893.6'	31.648355°	-103.255121°	100'	FNL	1844'	FWL	100'	FNL	796'	FEL	8

LINE	BEARING	DISTANCE
L1	S 56°35'02" W	395.6'
L2	N 16°15'32" W	300.0'
L3	N 16°15'32" W	10373.6'
TOTAL		11069.2'



Hunter Wade Wills
02/14/2023



NOTE: AREA IS LOCATED APPROXIMATELY 9.2 MILES NORTHWEST OF PYOTE, WARD COUNTY, TEXAS.



3300 NORTH A STREET, BUILDING 2, SUITE 120
MIDLAND, TX 79705-5471
TEL (432) 253-3255
TBPELS SURVEYING FIRM #10193998
DATE: 2/2/2023 REV: 2/13/2023
BY: R. CABELLO REV: J. ALVAREZ
AVO: 046846.035

- LEGEND**
- SUBJECT LATERAL
 - SECTION LINE
 - COUNTY LINE
 - BLOCK LINE
 - PROPOSED LATERAL
 - LEASE LINE
 - NO PERF. ZONE (NPZ)
 - FOUND MONUMENT
 - UNLEASED MINERAL

NOTES:

- THE BASIS OF BEARING OF THE SURVEY IS THE TEXAS COORDINATE SYSTEM, NORTH AMERICAN DATUM 1927 (NAD 27), CENTRAL ZONE (4203).
- ALL TEXAS STATE PLANE COORDINATES AND GEOGRAPHIC COORDINATES SHOWN HEREON ARE NAD 27 GRID COORDINATES AS COMPUTED BY CORPSCON VERSION 6.0.1. ALL GEOGRAPHIC COORDINATES SHOWN HEREON WERE CONVERTED USING CORPSCON VERSION 6.0.1. UNLESS OTHERWISE NOTED, ALL DISTANCES SHOWN HEREON ARE GRID DISTANCES AND THEY CAN BE CONVERTED TO SURFACE WHEN MULTIPLIED WITH A "SURFACE ADJUSTMENT FACTOR" OF 1.000191647, AS CALCULATED BY CORPSCON.
- ELEVATIONS SHOWN HEREON ARE NAVD88 AS DERIVED BY GPS.
- THIS EXHIBIT IS FOR TEXAS RAILROAD COMMISSION WELL PERMITTING PURPOSES ONLY. BOUNDARY LINES AND ACREAGE SHOWN HEREON REFLECT THE SURVEYORS PROFESSIONAL OPINION OF MINERAL RIGHTS AS DETERMINED FROM CLIENT-PROVIDED OIL AND GAS MINERAL LEASE DOCUMENTATION. THE INFORMATION DEPICTED HEREON SHALL NOT BE USED IN THE CONVEYANCE OF FEE TITLE TO REAL PROPERTY.
- ALL MEASUREMENTS TO LEASE, UNIT, AND SURVEY LINES ARE PERPENDICULAR TO SAID LINES.
- THIS SURVEY WAS PREPARED WITHOUT THE BENEFIT OF A TITLE REPORT.

CONTINENTAL RESOURCES, INC.

PERMIT PLAT

UTL 0708E #0605H

TRACT 1 - 320.3± ACRES
TRACT 2 - 320.3± ACRES
TRACT 4 - 160.2± ACRES
TRACT 5 - 160.2± ACRES
TRACT TOTAL - 961.0± ACRES

LOCATED IN:
SECTION 6, SECTION 7, AND SECTION 8,
BLOCK 18, UNIVERSITY LAND SURVEY,
WARD COUNTY, TEXAS