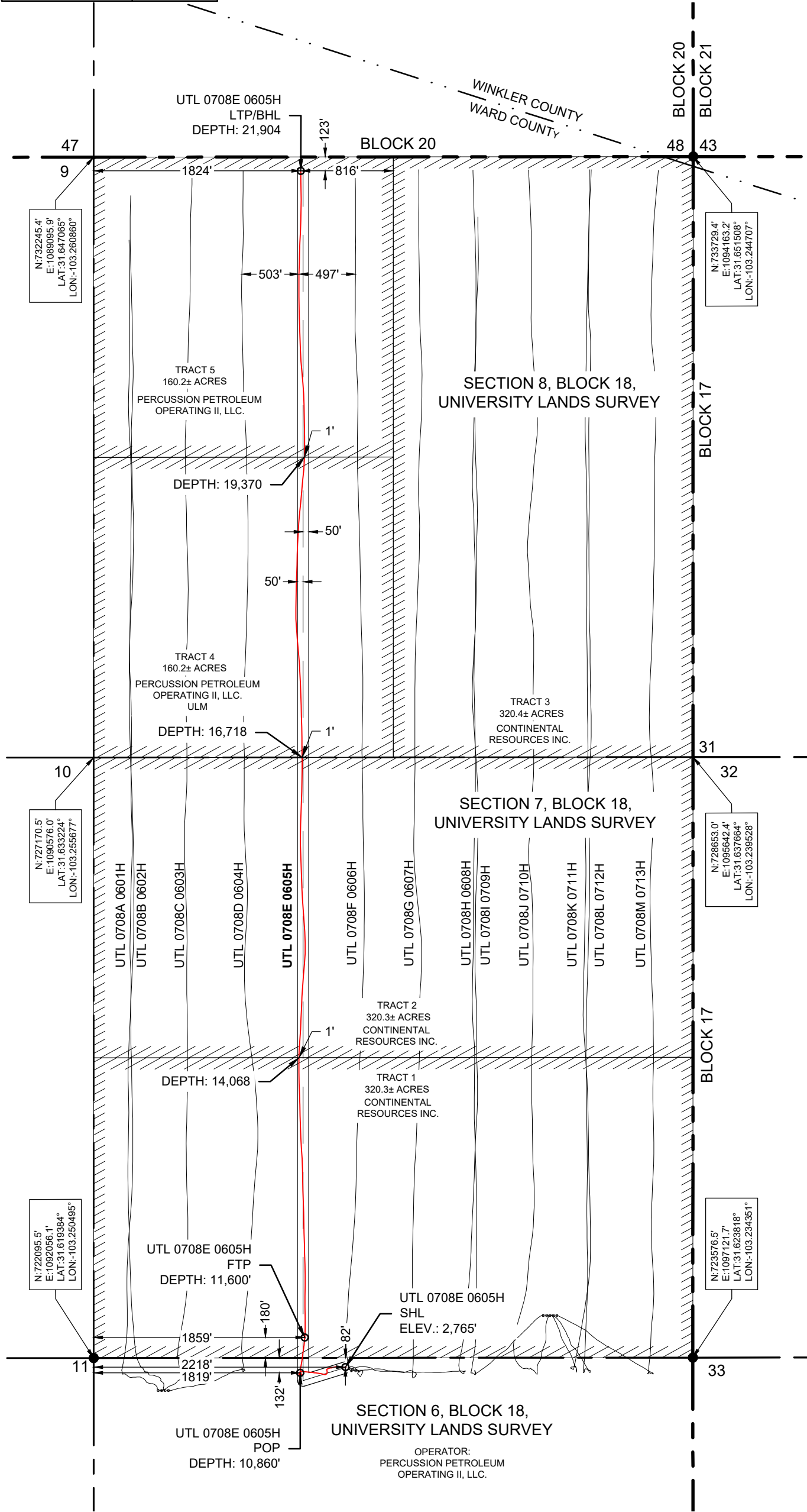


UTL 0708E 0605H	NORTHING (Y) (NAD 27)	EASTING (X) NAD 27)	LATITUDE (NAD 27)	LONGITUDE (NAD 27)	SECTION LINE		SECTION LINE		LEASE LINE		LEASE LINE		SECTION
					FOOTAGE	FNL/FSL	FOOTAGE	FEL/FWL	FOOTAGE	FNL/FSL	FOOTAGE	FEL/FWL	
SURFACE HOLE LOCATION (SHL)	722639.5'	1094207.7'	31.621034°	-103.243631°	82'	FNL	2218'	FWL	82'	FNL	2218'	FWL	6
POINT OF PENETRATION (POP)	722479.5'	1093838.8'	31.620568°	-103.244802°	132'	FNL	1819'	FWL	132'	FNL	1819'	FWL	6
FIRST TAKE POINT (FTP)	722789.7'	1093790.3'	31.621417°	-103.244984°	180'	FSL	1859'	FWL	180'	FSL	1859'	FWL	7
LAST TAKE POINT/BOTTOM HOLE LOCATION (LTP/BHL)	732640.5'	1090880.8'	31.648279°	-103.255159°	123'	FNL	1824'	FWL	123'	FNL	816'	FEL	8

UTL 0708E 0605H	DISTANCE
TRACT 1	2,468'
TRACT 2	2,650'
TRACT 4	2,652'
TRACT 5	2,534'
TOTAL	10,304'



Hunter Wade Wills
12/15/2023



NOTE: AREA IS LOCATED APPROXIMATELY 9.2 MILES NORTHWEST OF PYOTE, WARD COUNTY, TEXAS.



DATE: 12/12/2023
BY: R. CABELLO
AVO: 046846.035

LEGEND	
	AS-DRILLED SUBJECT LATERAL
	SECTION LINE
	COUNTY LINE
	BLOCK LINE
	PROPOSED LATERAL
	LEASE LINE
	FOUND MONUMENT
	UNLEASED MINERAL

NOTES:

- THE BASIS OF BEARING OF THE SURVEY IS THE TEXAS COORDINATE SYSTEM, NORTH AMERICAN DATUM 1927 (NAD 27), CENTRAL ZONE (4203).
- ALL TEXAS STATE PLANE COORDINATES AND GEOGRAPHIC COORDINATES SHOWN HEREON ARE NAD 27 GRID COORDINATES AS COMPUTED BY CORPSCON VERSION 6.0.1. ALL GEOGRAPHIC COORDINATES SHOWN HEREON WERE CONVERTED USING CORPSCON VERSION 6.0.1. UNLESS OTHERWISE NOTED, ALL DISTANCES SHOWN HEREON ARE GRID DISTANCES AND THEY CAN BE CONVERTED TO SURFACE WHEN MULTIPLIED WITH A "SURFACE ADJUSTMENT FACTOR" OF 1.000191647, AS CALCULATED BY CORPSCON.
- ELEVATIONS SHOWN HEREON ARE NAVD88 AS DERIVED BY GPS.
- THIS EXHIBIT IS FOR TEXAS RAILROAD COMMISSION WELL PERMITTING PURPOSES ONLY. BOUNDARY LINES AND ACREAGE SHOWN HEREON REFLECT THE SURVEYORS PROFESSIONAL OPINION OF MINERAL RIGHTS AS DETERMINED FROM CLIENT-PROVIDED OIL AND GAS MINERAL LEASE DOCUMENTATION. THE INFORMATION DEPICTED HEREON SHALL NOT BE USED IN THE CONVEYANCE OF FEE TITLE TO REAL PROPERTY.
- ALL MEASUREMENTS TO LEASE, UNIT, AND SURVEY LINES ARE PERPENDICULAR TO SAID LINES.
- THIS SURVEY WAS PREPARED WITHOUT THE BENEFIT OF A TITLE REPORT.
- THE AS-DRILLED DATA USED TO DEPICT THE WELL BORE PATH WAS PROVIDED BY OTHERS. NO WARRANTY IS EITHER EXPRESSED OF IMPLIED AS TO THE ACCURACY OR THE INFORMATION HEREIN.

CONTINENTAL RESOURCES, INC.

FINAL AS-DRILLED PLAT

UTL 0708E 0605H

TRACT 1 - 320.3± ACRES
TRACT 2 - 320.3± ACRES
TRACT 4 - 160.2± ACRES
TRACT 5 - 160.2± ACRES
TRACT TOTAL - 961.0± ACRES

LOCATED IN:
SECTION 6, SECTION 7, AND SECTION 8,
BLOCK 18, UNIVERSITY LANDS SURVEY,
WARD COUNTY, TEXAS