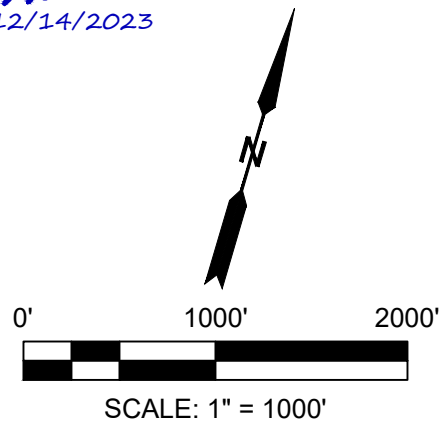
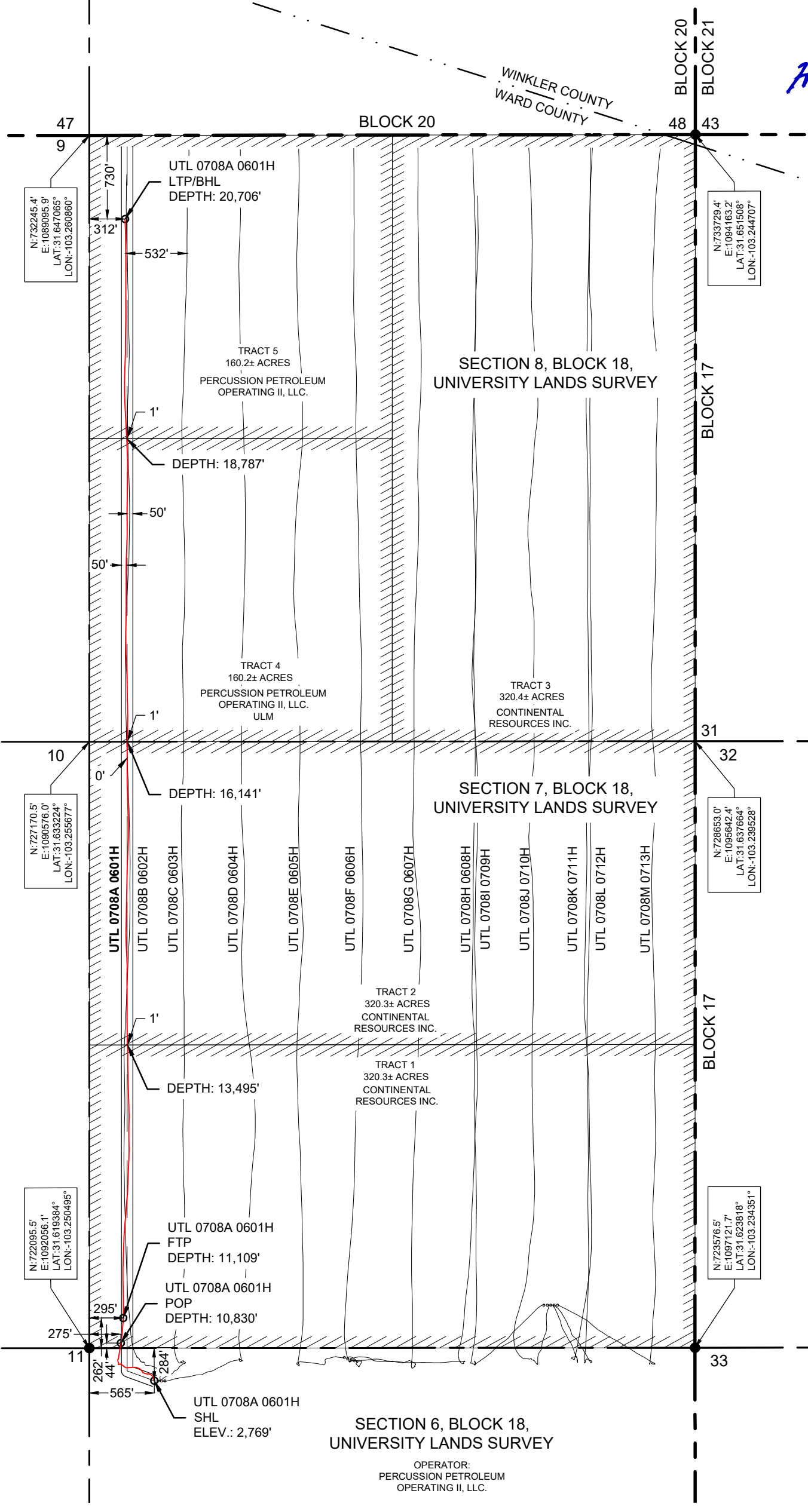


UTL 0708A 0601H	NORTHING (Y) (NAD 27)	EASTING (X) (NAD 27)	LATITUDE (NAD 27)	LONGITUDE (NAD 27)	SECTION LINE		SECTION LINE		LEASE LINE		LEASE LINE		SECTION
					FOOTAGE	FNL/FSL	FOOTAGE	FEL/FWL	FOOTAGE	FNL/FSL	FOOTAGE	FEL/FWL	
SURFACE HOLE LOCATION (SHL)	721981.3'	1092678.4'	31.619115°	-103.248487°	284'	FNL	565'	FWL	284'	FNL	565'	FWL	6
POINT OF PENETRATION (POP)	722214.5'	1092307.5'	31.619729°	-103.249698°	44'	FSL	275'	FWL	44'	FSL	275'	FWL	6
FIRST TAKE POINT (FTP)	722430.2'	1092266.2'	31.620319°	-103.249849°	262'	FSL	295'	FWL	262'	FSL	295'	FWL	7
LAST TAKE POINT/BOTTOM HOLE LOCATION (LTP/BHL)	731632.2'	1089599.4'	31.645416°	-103.259191°	730'	FNL	312'	FWL	730'	FNL	312'	FWL	8

UTL 0708A 0601H	DISTANCE
TRACT 1	2,386'
TRACT 2	2,646'
TRACT 4	2,646'
TRACT 5	1,919'
TOTAL	9,597'



NOTE: AREA IS LOCATED APPROXIMATELY 9.2 MILES NORTHWEST OF PYOTE, WARD COUNTY, TEXAS.

**halff**  
 3300 NORTH A STREET, BUILDING 2, SUITE 120  
 MIDLAND, TX 79705-5471  
 TEL (432) 253-3255  
 TBPELS SURVEYING FIRM #10193998  
 DATE: 12/12/2023  
 BY: R. CABELLO  
 AVO: 046846.035

**LEGEND**

	AS-DRILLED SUBJECT LATERAL
	SECTION LINE
	COUNTY LINE
	BLOCK LINE
	PROPOSED LATERAL
	LEASE LINE
	FOUND MONUMENT
	UNLEASED MINERAL

**NOTES:**

- THE BASIS OF BEARING OF THE SURVEY IS THE TEXAS COORDINATE SYSTEM, NORTH AMERICAN DATUM 1927 (NAD 27), CENTRAL ZONE (4203).
- ALL TEXAS STATE PLANE COORDINATES AND GEOGRAPHIC COORDINATES SHOWN HEREON ARE NAD 27 GRID COORDINATES AS COMPUTED BY CORPSCON VERSION 6.0.1. ALL GEOGRAPHIC COORDINATES SHOWN HEREON WERE CONVERTED USING CORPSCON VERSION 6.0.1. UNLESS OTHERWISE NOTED, ALL DISTANCES SHOWN HEREON ARE GRID DISTANCES AND THEY CAN BE CONVERTED TO SURFACE WHEN MULTIPLIED WITH A "SURFACE ADJUSTMENT FACTOR" OF 1.000191647, AS CALCULATED BY CORPSCON.
- ELEVATIONS SHOWN HEREON ARE NAVD88 AS DERIVED BY GPS.
- THIS EXHIBIT IS FOR TEXAS RAILROAD COMMISSION WELL PERMITTING PURPOSES ONLY. BOUNDARY LINES AND ACREAGE SHOWN HEREON REFLECT THE SURVEYORS PROFESSIONAL OPINION OF MINERAL RIGHTS AS DETERMINED FROM CLIENT-PROVIDED OIL AND GAS MINERAL LEASE DOCUMENTATION. THE INFORMATION DEPICTED HEREON SHALL NOT BE USED IN THE CONVEYANCE OF FEE TITLE TO REAL PROPERTY.
- ALL MEASUREMENTS TO LEASE, UNIT, AND SURVEY LINES ARE PERPENDICULAR TO SAID LINES.
- THIS SURVEY WAS PREPARED WITHOUT THE BENEFIT OF A TITLE REPORT.
- THE AS-DRILLED DATA USED TO DEPICT THE WELL BORE PATH WAS PROVIDED BY OTHERS. NO WARRANTY IS EITHER EXPRESSED OR IMPLIED AS TO THE ACCURACY OR THE INFORMATION HEREIN.

**CONTINENTAL RESOURCES, INC.**

**FINAL AS-DRILLED PLAT**

**UTL 0708A 0601H**

TRACT 1 - 320.3± ACRES  
 TRACT 2 - 320.3± ACRES  
 TRACT 4 - 160.2± ACRES  
 TRACT 5 - 160.2± ACRES  
 TRACT TOTAL - 961.0± ACRES

**LOCATED IN:**  
 SECTION 6, SECTION 7, AND SECTION 8,  
 BLOCK 18, UNIVERSITY LANDS SURVEY,  
 WARD COUNTY, TEXAS