



POINT ENERGY PARTNERS PETRO, LLC

Location: Ward County, TX
Field: Phantom (Wolfcamp)
Facility: UL Dino Juice 18-40-45 Pad

Slot: UL Dino Juice 18-40-45 WC1 #5H
Well: UL Dino Juice 18-40-45 WC1 #5H ST02
Wellbore: UL Dino Juice 18-40-45 WC1 #5H ST02 PWB



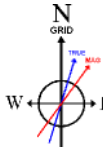
Pst reference wellpath is UL Dino Juice 18-40-45 WC1 #5H ST02 Rev-C.0	Grid System: NAD27 / Lambert Texas SP, Central Zone (4203), US feet
True vertical depths are referenced to Nabors M7504 (RKB)	North Reference: Grid north
Reference wellpath measured depths are referenced to Nabors M7504 (RKB)	Scale: True distance
Nabors M7504 (RKB) to Mean Sea Level: 2873 feet	Coordinates are in feet referenced to Slot
Mean Sea Level to Mud line (At Slot: UL Dino Juice 18-40-45 WC1 #5H): -2846 feet	Depths are in feet
Offset wellpath MDs are referenced to each path's default MD datum	Created by: movegasusa on 2021-10-17; Database: WA_HOU_SouthernReg_Defn

Location Information					
Facility Name		Grid East (US ft)	Grid North (US ft)	Latitude	Longitude
UL Dino Juice 18-40-45 Pad		1063758.780	718740.760	31°36'29.1351"N	103°20'27.8792"W
Slot	Local N (ft)	Local E (ft)	Grid East (US ft)	Grid North (US ft)	Latitude
UL Dino Juice 18-40-45 WC1 #5H	-73.38	-395.20	1063363.610	718667.380	31°36'28.3034"N
Nabors M7504 (RKB) to Mud line (At Slot: UL Dino Juice 18-40-45 WC1 #5H)					27ft
Mean Sea Level to Mud line (At Slot: UL Dino Juice 18-40-45 WC1 #5H)					-2846ft
Nabors M7504 (RKB) to Mean Sea Level					2873ft

Targets							
Name	MD (ft)	TVD (ft)	Local N (ft)	Local E (ft)	Grid East (US ft)	Grid North (US ft)	Latitude
UL Dino Juice 18-40-45 WC1 #5H ST02 - BTP/BHL	27906.92	12621.43	-12970.32	5554.66	1068917.91	705687.90	31°34'21.4715"N
UL Dino Juice 18-40-45 WC1 #5H ST02 - P2	22689.38	12724.86	-7964.34	4091.96	1067455.30	710703.56	31°35'10.6860"N
UL Dino Juice 18-40-45 WC1 #5H ST02 - IP3	24579.65	12734.60	-9778.47	4622.03	1067985.34	708899.54	31°34'52.8000"N
UL Dino Juice 18-40-45 WC1 #5H ST02 - IP1	20724.34	12864.32	-6083.00	3542.25	1069005.63	712584.78	31°35'29.0714"N
UL Dino Juice 18-40-45 WC1 #5H ST02 - TTP	N/A	12991.03	885.16	1506.22	1064869.73	719552.48	31°36'37.4629"N

Well Profile Data								
Design Comment	MD (ft)	Inc (°)	Az (°)	TVD (ft)	Local N (ft)	Local E (ft)	DLS (°/100ft)	VS (ft)
Tie On	18799.00	90.710	164.180	12897.63	-4234.01	3006.63	1.27	4907.33
Start Turn	18824.00	90.710	164.180	12897.32	-4258.06	3013.44	0.00	4932.33
End Turn	18886.50	91.000	165.396	12896.39	-4318.36	3029.84	2.00	4994.81
Start Turn	18948.99	91.000	165.396	12895.30	-4378.82	3045.59	0.00	5057.26
End Turn	19033.17	91.000	163.712	12893.83	-4459.95	3068.01	2.00	5141.42
Start Build	20724.34	91.000	163.712	12864.32	-6083.00	3542.25	0.00	6832.33
End Build	20884.34	94.200	163.712	12857.06	-6236.40	3587.07	2.00	6992.14
Start Drop	22689.38	94.200	163.712	12724.86	-7964.34	4091.96	0.00	8792.33
End Drop	22929.38	89.400	163.712	12717.32	-8194.52	4159.22	2.00	9032.15
Start Build	24579.65	89.400	163.712	12734.60	-9778.47	4622.03	0.00	10682.33
End Build	24709.65	92.000	163.712	12733.02	-9903.23	4658.49	2.00	10812.30
PBHL	27906.92	92.000	163.712	12621.43	-12970.32	5554.66	0.00	14007.63

Bottom Hole Location									
MD (ft)	Inc (°)	Az (°)	TVD (ft)	Local N (ft)	Local E (ft)	Grid East (US ft)	Grid North (US ft)	Latitude	Longitude
27906.92	92.000	163.712	12621.43	-12970.32	5554.66	1068917.91	705687.90	31°34'21.4715"N	103°19'24.1878"W



HOGM2021v11.0 (1900.0 to 2022.0) Dip: 59.32° Field: 47121.3 nT
Magnetic North is 6.78 degrees East of True North (at 8/5/2021)
Grid North is 1.55 degrees West of True North
To correct azimuth from True to Grid add 1.55 degrees
To correct azimuth from Magnetic to Grid add 8.33 degrees



Point Energy Partners Petro, LLC
Well: UL Dino Juice 18-40-45 WC1 #5H ST02
Field: Phantom (Wolfcamp)
Rig: Nabors 7504
Location: Ward County, TX
API: 42-475-38240-02
Latitude: 31° 36' 28.3034" N
Longitude: 103° 20' 32.4243" W
DF Elevation: 2873.00 ft
Elev. GL: 2846.00 ft
DF: 27.00 ft
Proposed Direction: 163.71°
PBHL: 19025 feet
Duration: 9/28/2021 to 10/19/2021
FSE's: Remote ops
SO#: 111040962

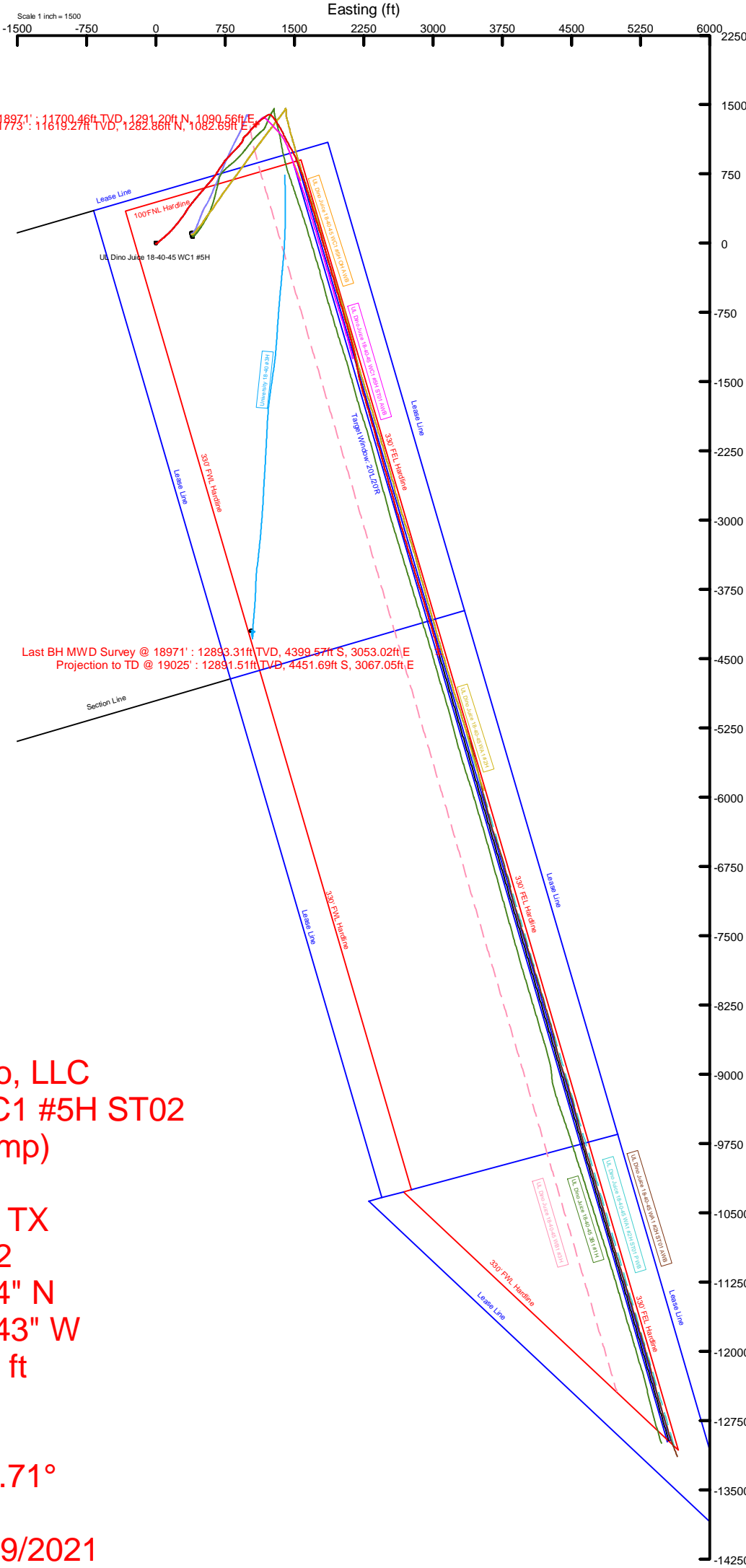
True Vertical Depth (ft)

ST02 Tie On @ 11773' : 7.96° Inc, 11773.00ft MD, 11619.27ft TVD, -927.71ft VS
8 3/4" BH ATC MWD Surveys 11855' - 18971' : 8.13° Inc, 11855.00ft MD, 11700.46ft TVD, -933.51ft VS

Last BH MWD Survey @ 18971' : 91.91° Inc, 18971.00ft MD, 12893.31ft TVD, 5079.26ft VS
Projection to TD @ 19025' : 91.91° Inc, 19025.00ft MD, 12891.51ft TVD, 5133.22ft VS

Vertical Section (ft)
Azimuth 163.71° with reference 0.00 N, 0.00 E

Scale 1 inch = 2000





Actual Wellpath Report

UL Dino Juice 18-40-45 WC1 #5H ST02 11855' - 18971' Proj: 19025'
Page 1 of 7



REFERENCE WELLPATH IDENTIFICATION			
Operator	POINT ENERGY PARTNERS PETRO, LLC	Well	UL Dino Juice 18-40-45 WC1 #5H ST02
Field	Phantom (Wolfcamp) - Ward County, TX	API	42-475-38240-02
Facility	UL Dino Juice 18-40-45 Pad	Wellbore	UL Dino Juice 18-40-45 WC1 #5H ST02 AWB
Slot	UL Dino Juice 18-40-45 WC1 #5H	Sidetrack from	UL Dino Juice 18-40-45 WC1 #5H OH FINAL 156'-13562' Proj: 13664 at 11773.00 MD

REPORT SETUP INFORMATION			
Projection System	NAD27 / Lambert Texas SP, Central Zone (4203), US feet	Software System	WellArchitect® 6.0
North Reference	Grid	User	Gail Deering
Scale	0.999938	Report Generated	24/Dec/2021 at 13:20
Convergence at slot	1.55° West	Database	WA-STX

WELLPATH LOCATION						
	Local coordinates		Grid coordinates		Geographic coordinates	
	North[ft]	East[ft]	Easting[US ft]	Northing[US ft]	Latitude	Longitude
Slot Location	-73.38	-395.20	1063363.61	718667.38	31°36'28.3034"N	103°20'32.4243"W
Facility Reference Pt			1063758.78	718740.76	31°36'29.1351"N	103°20'27.8792"W
Field Reference Pt			2082485.83	492283.04	31°01'12.0000"N	100°04'12.0000"W

WELLPATH DATUM			
Calculation method	Minimum curvature	Nabors M7504 (RKB) to Facility Vertical Datum	2873.00ft
Horizontal Reference Pt	Slot	Nabors M7504 (RKB) to Mean Sea Level	2873.00ft
Vertical Reference Pt	Nabors M7504 (RKB)	Nabors M7504 (RKB) to Mud Line at Slot (UL Dino Juice 18-40-45 WC1 #5H)	27.00ft
MD Reference Pt	Nabors M7504 (RKB)	Section Origin	N 0.00, E 0.00 ft
Field Vertical Reference	Mean Sea Level	Section Azimuth	163.71°

REFERENCE WELLPATH IDENTIFICATION			
Operator	POINT ENERGY PARTNERS PETRO, LLC	Well	UL Dino Juice 18-40-45 WC1 #5H ST02
Field	Phantom (Wolfcamp) - Ward County, TX	API	42-475-38240-02
Facility	UL Dino Juice 18-40-45 Pad	Wellbore	UL Dino Juice 18-40-45 WC1 #5H ST02 AWB
Slot	UL Dino Juice 18-40-45 WC1 #5H	Sidetrack from	UL Dino Juice 18-40-45 WC1 #5H OH FINAL 156'-13562' Proj: 13664 at 11773.00 MD

WELLPATH DATA (204 stations) † = interpolated, ‡ = extrapolated station												
MD [ft]	Inclination [°]	Azimuth [°]	TVD [ft]	Vert Sect [ft]	North [ft]	East [ft]	Grid East [US ft]	Grid North [US ft]	DLS [°/100ft]	Build Rate [°/100ft]	Turn Rate [°/100ft]	Comments
0.00†	0.000	119.940	0.00	0.00	0.00	0.00	1063363.61	718667.38	0.00	0.00	0.00	
27.00	0.000	119.940	27.00	0.00	0.00	0.00	1063363.61	718667.38	0.00	0.00	0.00	
156.00	0.800	119.940	156.00	0.65	-0.45	0.78	1063364.39	718666.93	0.62	0.62	0.00	SDT Surface/Intermediate Section MWD Surveys 156'-11773' (Imported)
274.00	0.100	148.940	273.99	1.34	-0.95	1.55	1063365.16	718666.43	0.61	-0.59	24.58	
399.00	0.300	165.940	398.99	1.78	-1.36	1.68	1063365.29	718666.02	0.17	0.16	13.60	
599.00	0.400	140.940	598.99	2.94	-2.41	2.25	1063365.86	718664.97	0.09	0.05	-12.50	
744.00	0.700	128.940	743.98	4.14	-3.36	3.26	1063366.87	718664.02	0.22	0.21	-8.28	
873.00	0.400	187.940	872.98	5.20	-4.30	3.81	1063367.42	718663.08	0.47	-0.23	45.74	
1063.00	0.600	190.940	1062.97	6.69	-5.93	3.53	1063367.14	718661.45	0.11	0.11	1.58	
1093.00	0.600	198.940	1092.97	6.95	-6.24	3.45	1063367.06	718661.14	0.28	0.00	26.67	
1281.00	0.600	201.940	1280.96	8.53	-8.08	2.76	1063366.37	718659.30	0.02	0.00	1.60	
1369.00	0.600	176.940	1368.95	9.34	-8.97	2.61	1063366.22	718658.41	0.30	0.00	-28.41	
1545.00	0.260	249.490	1544.95	10.27	-10.03	2.29	1063365.90	718657.35	0.33	-0.19	41.22	
1609.00	0.220	96.560	1608.95	10.33	-10.09	2.27	1063365.88	718657.29	0.73	-0.06	-238.95	
1703.00	1.450	54.730	1702.94	10.01	-9.43	3.42	1063367.03	718657.95	1.38	1.31	-44.50	
1798.00	2.810	48.750	1797.87	8.64	-7.20	6.16	1063369.77	718660.18	1.45	1.43	-6.29	
1893.00	3.470	48.130	1892.72	6.41	-3.74	10.05	1063373.66	718663.64	0.70	0.69	-0.65	
1988.00	3.820	49.630	1987.53	3.88	0.22	14.60	1063378.21	718667.60	0.38	0.37	1.58	
2083.00	4.530	45.500	2082.28	0.81	4.90	19.69	1063383.30	718672.28	0.81	0.75	-4.35	
2178.00	4.660	49.980	2176.97	-2.51	10.02	25.32	1063388.93	718677.39	0.40	0.14	4.72	
2272.00	5.100	49.980	2270.63	-5.73	15.16	31.44	1063395.05	718682.54	0.47	0.47	0.00	
2367.00	5.630	50.240	2365.22	-9.29	20.85	38.26	1063401.87	718688.23	0.56	0.56	0.27	
2462.00	6.020	49.540	2459.73	-13.18	27.07	45.63	1063409.24	718694.44	0.42	0.41	-0.74	
2557.00	6.900	51.120	2554.12	-17.41	33.88	53.86	1063417.47	718701.26	0.94	0.93	1.66	
2652.00	7.600	50.770	2648.36	-22.06	41.44	63.17	1063426.78	718708.81	0.74	0.74	-0.37	
2747.00	8.350	48.660	2742.44	-27.43	49.97	73.22	1063436.82	718717.34	0.85	0.79	-2.22	
2842.00	9.190	48.130	2836.33	-33.62	59.59	84.05	1063447.65	718726.96	0.89	0.88	-0.56	
2936.00	9.670	48.930	2929.06	-40.17	69.78	95.59	1063459.19	718737.16	0.53	0.51	0.85	
3031.00	10.150	49.010	3022.64	-47.01	80.51	107.92	1063471.52	718747.89	0.51	0.51	0.08	
3126.00	10.900	48.840	3116.04	-54.29	91.92	121.00	1063484.60	718759.29	0.79	0.79	-0.18	
3221.00	11.430	46.640	3209.25	-62.35	104.29	134.61	1063498.21	718771.67	0.72	0.56	-2.32	
3315.00	11.560	44.790	3301.36	-71.15	117.37	148.02	1063511.62	718784.74	0.42	0.14	-1.97	
3410.00	11.650	43.560	3394.42	-80.57	131.08	161.33	1063524.93	718798.45	0.28	0.09	-1.29	
3505.00	11.520	41.810	3487.48	-90.40	145.10	174.27	1063537.86	718812.47	0.39	-0.14	-1.84	
3600.00	11.160	41.720	3580.63	-100.28	159.03	186.71	1063550.31	718826.40	0.38	-0.38	-0.09	
3694.00	10.950	41.100	3672.89	-109.91	172.55	198.63	1063562.23	718839.92	0.26	-0.22	-0.66	
3789.00	11.430	42.160	3766.08	-119.70	186.33	210.88	1063574.48	718853.69	0.55	0.51	1.12	
3884.00	10.900	40.220	3859.28	-129.58	200.16	223.00	1063586.59	718867.53	0.68	-0.56	-2.04	
3979.00	10.550	36.970	3952.62	-139.74	213.97	234.03	1063597.62	718881.34	0.74	-0.37	-3.42	
4074.00	9.890	35.480	4046.11	-150.00	227.56	243.99	1063607.59	718894.93	0.75	-0.69	-1.57	
4169.00	10.770	37.680	4139.57	-160.27	241.23	254.16	1063617.75	718908.59	1.01	0.93	2.32	
4264.00	11.300	39.700	4232.82	-170.69	255.42	265.53	1063629.12	718922.78	0.69	0.56	2.13	
4358.00	11.560	38.470	4324.95	-181.28	269.88	277.27	1063640.86	718937.24	0.38	0.28	-1.31	
4453.00	11.690	37.240	4418.00	-192.49	284.99	289.01	1063652.61	718952.35	0.29	0.14	-1.29	
4548.00	11.080	33.900	4511.14	-204.06	300.23	299.93	1063663.52	718967.59	0.95	-0.64	-3.52	



Actual Wellpath Report

UL Dino Juice 18-40-45 WC1 #5H ST02 11855' - 18971' Proj: 19025'
Page 3 of 7



REFERENCE WELLPATH IDENTIFICATION			
Operator	POINT ENERGY PARTNERS PETRO, LLC	Well	UL Dino Juice 18-40-45 WC1 #5H ST02
Field	Phantom (Wolfcamp) - Ward County, TX	API	42-475-38240-02
Facility	UL Dino Juice 18-40-45 Pad	Wellbore	UL Dino Juice 18-40-45 WC1 #5H ST02 AWB
Slot	UL Dino Juice 18-40-45 WC1 #5H	Sidetrack from	UL Dino Juice 18-40-45 WC1 #5H OH FINAL 156'-13562' Proj: 13664 at 11773.00 MD

WELLPATH DATA (204 stations)												
MD [ft]	Inclination [°]	Azimuth [°]	TVD [ft]	Vert Sect [ft]	North [ft]	East [ft]	Grid East [US ft]	Grid North [US ft]	DLS [°/100ft]	Build Rate [°/100ft]	Turn Rate [°/100ft]	Comments
4643.00	10.680	32.310	4604.43	-215.73	315.25	309.73	1063673.32	718982.61	0.53	-0.42	-1.67	
4738.00	10.950	30.380	4697.74	-227.74	330.47	319.00	1063682.58	718997.83	0.48	0.28	-2.03	
4833.00	11.740	31.080	4790.88	-240.48	346.53	328.55	1063692.14	719013.89	0.84	0.83	0.74	
4928.00	12.400	32.230	4883.78	-253.78	363.44	338.98	1063702.57	719030.79	0.74	0.69	1.21	
5022.00	12.840	35.480	4975.51	-266.93	380.48	350.42	1063714.01	719047.84	0.89	0.47	3.46	
5117.00	12.530	36.880	5068.20	-279.64	397.32	362.73	1063726.32	719064.67	0.46	-0.33	1.47	
5212.00	12.400	37.590	5160.96	-291.83	413.65	375.14	1063738.73	719081.00	0.21	-0.14	0.75	
5307.00	12.130	38.730	5253.79	-303.56	429.51	387.61	1063751.19	719096.87	0.38	-0.28	1.20	
5402.00	12.570	39.520	5346.59	-315.10	445.28	400.43	1063764.01	719112.63	0.50	0.46	0.83	
5496.00	12.880	39.780	5438.28	-326.69	461.22	413.64	1063777.23	719128.57	0.34	0.33	0.28	
5591.00	12.700	40.310	5530.92	-338.35	477.32	427.17	1063790.76	719144.67	0.23	-0.19	0.56	
5727.00	12.350	39.780	5663.69	-354.70	499.89	446.15	1063809.73	719167.24	0.27	-0.26	-0.39	
5822.00	12.350	39.520	5756.49	-366.08	515.54	459.12	1063822.70	719182.89	0.06	0.00	-0.27	
5916.00	12.400	40.400	5848.30	-377.27	530.98	472.05	1063835.63	719198.33	0.21	0.05	0.94	
6011.00	12.310	41.100	5941.10	-388.33	546.38	485.32	1063848.90	719213.72	0.18	-0.09	0.74	
6106.00	12.180	40.580	6033.94	-399.27	561.62	498.50	1063862.08	719228.97	0.18	-0.14	-0.55	
6201.00	12.350	40.930	6126.77	-410.25	576.91	511.67	1063875.25	719244.25	0.20	0.18	0.37	
6296.00	12.180	39.870	6219.61	-421.33	592.28	524.75	1063888.33	719259.62	0.30	-0.18	-1.12	
6390.00	12.440	40.220	6311.44	-432.44	607.62	537.65	1063901.22	719274.96	0.29	0.28	0.37	
6485.00	12.440	41.020	6404.21	-443.61	623.15	550.97	1063914.55	719290.49	0.18	0.00	0.84	
6579.00	12.480	40.840	6496.00	-454.59	638.47	564.26	1063927.83	719305.81	0.06	0.04	-0.19	
6674.00	12.440	41.540	6588.76	-465.61	653.90	577.76	1063941.33	719321.24	0.16	-0.04	0.74	
6769.00	12.400	41.020	6681.54	-476.57	669.25	591.24	1063954.81	719336.59	0.13	-0.04	-0.55	
6864.00	12.260	40.660	6774.35	-487.58	684.60	604.50	1063968.07	719351.94	0.17	-0.15	-0.38	
6958.00	12.090	38.550	6866.23	-498.69	699.87	617.14	1063980.71	719367.20	0.51	-0.18	-2.24	
7053.00	11.870	37.500	6959.17	-510.19	715.40	629.29	1063992.86	719382.73	0.33	-0.23	-1.11	
7148.00	11.870	35.480	7052.13	-522.01	731.11	640.91	1064004.48	719398.44	0.44	0.00	-2.13	
7242.00	11.910	33.370	7144.12	-534.27	747.08	651.85	1064015.42	719414.41	0.46	0.04	-2.24	
7337.00	11.910	32.140	7237.07	-547.12	763.57	662.46	1064026.03	719430.90	0.27	0.00	-1.29	
7432.00	12.090	31.440	7330.00	-560.32	780.36	672.86	1064036.43	719447.69	0.24	0.19	-0.74	
7527.00	11.430	32.310	7423.00	-573.24	796.80	683.09	1064046.65	719464.13	0.72	-0.69	0.92	
7622.00	10.420	34.780	7516.28	-584.86	811.81	693.02	1064056.58	719479.14	1.17	-1.06	2.60	
7716.00	10.460	35.210	7608.72	-595.52	825.77	702.79	1064066.35	719493.09	0.09	0.04	0.46	
7811.00	10.290	34.950	7702.17	-606.20	839.77	712.62	1064076.18	719507.09	0.19	-0.18	-0.27	
7906.00	10.460	34.510	7795.62	-616.96	853.83	722.37	1064085.93	719521.15	0.20	0.18	-0.46	
8001.00	10.770	33.630	7888.99	-628.13	868.33	732.17	1064095.73	719535.65	0.37	0.33	-0.93	
8095.00	11.030	34.510	7981.30	-639.47	883.05	742.13	1064105.69	719550.37	0.33	0.28	0.94	
8190.00	10.590	40.490	8074.61	-649.99	897.18	752.94	1064116.50	719564.50	1.27	-0.46	6.29	
8285.00	10.510	44.790	8168.01	-658.97	909.96	764.72	1064128.28	719577.29	0.83	-0.08	4.53	
8382.00	10.990	42.690	8263.31	-668.01	923.04	777.22	1064140.78	719590.36	0.64	0.49	-2.16	
8476.00	11.820	40.660	8355.45	-677.88	936.93	789.57	1064153.12	719604.25	0.98	0.88	-2.16	
8571.00	12.310	41.980	8448.35	-688.51	951.84	802.68	1064166.24	719619.16	0.59	0.52	1.39	
8666.00	11.960	43.120	8541.23	-698.85	966.55	816.18	1064179.74	719633.87	0.45	-0.37	1.20	
8761.00	11.380	43.740	8634.26	-708.54	980.51	829.39	1064192.95	719647.82	0.62	-0.61	0.65	
8855.00	10.110	45.230	8726.61	-717.11	993.02	841.66	1064205.21	719660.33	1.38	-1.35	1.59	



Actual Wellpath Report

UL Dino Juice 18-40-45 WC1 #5H ST02 11855' - 18971' Proj: 19025'
Page 4 of 7



REFERENCE WELLPATH IDENTIFICATION			
Operator	POINT ENERGY PARTNERS PETRO, LLC	Well	UL Dino Juice 18-40-45 WC1 #5H ST02
Field	Phantom (Wolfcamp) - Ward County, TX	API	42-475-38240-02
Facility	UL Dino Juice 18-40-45 Pad	Wellbore	UL Dino Juice 18-40-45 WC1 #5H ST02 AWB
Slot	UL Dino Juice 18-40-45 WC1 #5H	Sidetrack from	UL Dino Juice 18-40-45 WC1 #5H OH FINAL 156'-13562' Proj: 13664 at 11773.00 MD

WELLPATH DATA (204 stations)												
MD [ft]	Inclination [°]	Azimuth [°]	TVD [ft]	Vert Sect [ft]	North [ft]	East [ft]	Grid East [US ft]	Grid North [US ft]	DLS [°/100ft]	Build Rate [°/100ft]	Turn Rate [°/100ft]	Comments
8950.00	9.270	45.410	8820.26	-724.71	1004.26	853.03	1064216.58	719671.58	0.88	-0.88	0.19	
9045.00	8.880	45.150	8914.07	-731.84	1014.81	863.68	1064227.23	719682.12	0.41	-0.41	-0.27	
9140.00	8.880	43.920	9007.93	-738.99	1025.26	873.96	1064237.51	719692.57	0.20	0.00	-1.29	
9234.00	7.690	40.930	9100.95	-746.00	1035.24	883.11	1064246.67	719702.55	1.35	-1.27	-3.18	
9329.00	7.470	41.980	9195.12	-752.69	1044.63	891.41	1064254.96	719711.94	0.27	-0.23	1.11	
9424.00	6.900	39.080	9289.37	-759.18	1053.65	899.14	1064262.69	719720.96	0.71	-0.60	-3.05	
9512.00	6.510	37.240	9376.77	-765.15	1061.72	905.49	1064269.04	719729.04	0.51	-0.44	-2.09	
9607.00	6.070	43.390	9471.20	-770.89	1069.66	912.20	1064275.75	719736.97	0.85	-0.46	6.47	
9707.00	5.050	44.790	9570.73	-775.69	1076.63	918.93	1064282.48	719743.94	1.03	-1.02	1.40	
9801.00	6.510	35.040	9664.25	-781.02	1083.93	924.90	1064288.45	719751.24	1.87	1.55	-10.37	
9896.00	7.080	34.250	9758.58	-788.11	1093.18	931.29	1064294.84	719760.49	0.61	0.60	-0.83	
9991.00	6.290	27.130	9852.94	-795.61	1102.65	936.96	1064300.51	719769.96	1.20	-0.83	-7.49	
10085.00	6.640	17.640	9946.34	-803.86	1112.41	940.95	1064304.50	719779.72	1.19	0.37	-10.10	
10180.00	6.810	14.120	10040.69	-813.27	1123.11	943.99	1064307.54	719790.41	0.47	0.18	-3.71	
10275.00	6.990	20.450	10135.00	-822.76	1133.98	947.39	1064310.94	719801.29	0.82	0.19	6.66	
10370.00	7.160	32.230	10229.28	-831.32	1144.41	952.56	1064316.11	719811.72	1.53	0.18	12.40	
10464.00	7.340	45.230	10322.54	-838.06	1153.59	959.95	1064323.50	719820.90	1.75	0.19	13.83	
10559.00	7.340	52.790	10416.76	-843.12	1161.54	969.09	1064332.64	719828.84	1.02	0.00	7.96	
10654.00	7.740	52.790	10510.94	-847.57	1169.08	979.02	1064342.57	719836.38	0.42	0.42	0.00	
10749.00	7.740	44.620	10605.08	-852.97	1177.50	988.61	1064352.16	719844.80	1.16	0.00	-8.60	
10843.00	7.780	41.020	10698.22	-859.48	1186.81	997.23	1064360.78	719854.11	0.52	0.04	-3.83	
10938.00	8.130	37.320	10792.30	-866.94	1197.00	1005.52	1064369.07	719864.30	0.65	0.37	-3.89	
11033.00	7.820	37.590	10886.38	-874.74	1207.46	1013.54	1064377.08	719874.76	0.33	-0.33	0.28	
11127.00	7.650	39.870	10979.53	-881.99	1217.33	1021.45	1064385.00	719884.63	0.37	-0.18	2.43	
11222.00	7.690	41.810	11073.68	-888.87	1226.92	1029.74	1064393.29	719894.22	0.28	0.04	2.04	
11317.00	7.820	42.950	11167.81	-895.54	1236.39	1038.38	1064401.93	719903.69	0.21	0.14	1.20	
11411.00	8.000	43.920	11260.92	-902.06	1245.78	1047.28	1064410.82	719913.08	0.24	0.19	1.03	
11506.00	8.220	43.300	11354.97	-908.78	1255.49	1056.52	1064420.06	719922.79	0.25	0.23	-0.65	
11601.00	8.220	44.180	11448.99	-915.56	1265.30	1065.91	1064429.45	719932.60	0.13	0.00	0.93	
11695.00	8.130	43.560	11542.03	-922.21	1274.94	1075.18	1064438.72	719942.23	0.13	-0.10	-0.66	
11773.00	7.960	43.390	11619.27	-927.71	1282.86	1082.69	1064446.23	719950.15	0.22	-0.22	-0.22	ST02 Tie On @ 11773'
11855.00	8.130	43.300	11700.46	-933.51	1291.20	1090.56	1064454.10	719958.50	0.21	0.21	-0.11	3/4" BH ATC MWD Surveys 11855' - 18971'
11868.00	8.210	42.420	11713.33	-934.46	1292.56	1091.82	1064455.36	719959.85	1.14	0.62	-6.77	
11913.00	8.220	44.020	11757.87	-937.72	1297.24	1096.22	1064459.76	719964.54	0.51	0.02	3.56	
11962.00	9.290	44.700	11806.29	-941.38	1302.57	1101.44	1064464.98	719969.87	2.19	2.18	1.39	
12009.00	10.560	45.460	11852.59	-945.26	1308.29	1107.18	1064470.72	719975.59	2.72	2.70	1.62	
12057.00	12.020	50.390	11899.66	-949.32	1314.56	1114.16	1064477.70	719981.86	3.64	3.04	10.27	
12104.00	13.180	50.340	11945.53	-953.38	1321.10	1122.06	1064485.60	719988.40	2.47	2.47	-0.11	
12152.00	14.310	51.120	11992.15	-957.83	1328.32	1130.89	1064494.43	719995.61	2.39	2.35	1.63	
12199.00	15.730	52.170	12037.55	-962.40	1335.87	1140.44	1064503.98	720003.17	3.08	3.02	2.23	
12247.00	16.050	52.090	12083.71	-967.23	1343.94	1150.82	1064514.35	720011.23	0.67	0.67	-0.17	
12341.00	16.670	54.680	12173.91	-976.42	1359.72	1172.07	1064535.61	720027.01	1.02	0.66	2.76	
12436.00	17.000	54.170	12264.84	-985.51	1375.73	1194.45	1064557.98	720043.02	0.38	0.35	-0.54	
12531.00	14.610	65.610	12356.26	-991.84	1388.81	1216.63	1064580.16	720056.10	4.12	-2.52	12.04	
12626.00	15.330	114.950	12448.39	-985.23	1388.46	1239.01	1064602.54	720055.75	13.05	0.76	51.94	

REFERENCE WELLPATH IDENTIFICATION			
Operator	POINT ENERGY PARTNERS PETRO, LLC	Well	UL Dino Juice 18-40-45 WC1 #5H ST02
Field	Phantom (Wolfcamp) - Ward County, TX	API	42-475-38240-02
Facility	UL Dino Juice 18-40-45 Pad	Wellbore	UL Dino Juice 18-40-45 WC1 #5H ST02 AWB
Slot	UL Dino Juice 18-40-45 WC1 #5H	Sidetrack from	UL Dino Juice 18-40-45 WC1 #5H OH FINAL 156'-13562' Proj: 13664 at 11773.00 MD

WELLPATH DATA (204 stations)												
MD [ft]	Inclination [°]	Azimuth [°]	TVD [ft]	Vert Sect [ft]	North [ft]	East [ft]	Grid East [US ft]	Grid North [US ft]	DLS [°/100ft]	Build Rate [°/100ft]	Turn Rate [°/100ft]	Comments
12720.00	23.480	137.090	12537.09	-960.22	1369.44	1263.10	1064626.63	720036.74	11.54	8.67	23.55	
12815.00	30.760	146.340	12621.63	-920.05	1335.30	1289.50	1064653.03	720002.59	8.84	7.66	9.74	
12910.00	35.430	145.510	12701.20	-870.68	1292.36	1318.57	1064682.10	719959.66	4.94	4.92	-0.87	
13004.00	41.590	150.860	12774.74	-814.31	1242.59	1349.23	1064712.76	719909.89	7.44	6.55	5.69	
13099.00	47.680	155.270	12842.32	-748.75	1183.08	1379.31	1064742.84	719850.39	7.19	6.41	4.64	
13194.00	56.700	151.930	12900.51	-674.98	1116.00	1412.76	1064776.28	719783.31	9.89	9.49	-3.52	
13288.00	68.080	150.370	12944.01	-593.82	1043.19	1452.94	1064816.46	719710.51	12.19	12.11	-1.66	
13383.00	79.760	153.620	12970.28	-504.60	962.72	1495.65	1064859.17	719630.03	12.72	12.29	3.42	
13478.00	91.020	160.300	12977.91	-410.76	875.75	1532.59	1064896.10	719543.07	13.76	11.85	7.03	
13573.00	91.790	158.930	12975.58	-316.03	786.73	1565.67	1064929.18	719454.06	1.65	0.81	-1.44	
13668.00	92.150	161.150	12972.32	-221.29	697.49	1598.08	1064961.59	719364.83	2.37	0.38	2.34	
13762.00	91.970	163.990	12968.94	-127.38	607.88	1626.22	1064989.72	719275.22	3.03	-0.19	3.02	
13784.00	91.690	163.490	12968.24	-105.39	586.77	1632.37	1064995.88	719254.11	2.60	-1.27	-2.27	
13879.00	91.910	163.020	12965.25	-10.44	495.84	1659.73	1065023.23	719163.19	0.55	0.23	-0.49	
13974.00	91.880	162.650	12962.11	84.49	405.12	1687.75	1065051.25	719072.48	0.39	-0.03	-0.39	
14069.00	91.940	163.030	12958.94	179.43	314.40	1715.76	1065079.26	718981.76	0.40	0.06	0.40	
14163.00	91.790	162.790	12955.88	273.37	224.60	1743.37	1065106.87	718891.97	0.30	-0.16	-0.26	
14258.00	91.170	163.390	12953.43	368.33	133.74	1771.00	1065134.49	718801.11	0.91	-0.65	0.63	
14353.00	90.990	163.500	12951.64	463.32	42.69	1798.06	1065161.56	718710.07	0.22	-0.19	0.12	
14448.00	91.600	164.000	12949.49	558.29	-48.49	1824.64	1065188.13	718618.90	0.83	0.64	0.53	
14542.00	90.520	163.700	12947.75	652.27	-138.76	1850.78	1065214.27	718528.63	1.19	-1.15	-0.32	
14637.00	90.310	164.000	12947.07	747.27	-230.01	1877.20	1065240.69	718437.38	0.39	-0.22	0.32	
14732.00	90.490	163.650	12946.40	842.27	-321.25	1903.67	1065267.15	718346.15	0.41	0.19	-0.37	
14827.00	90.280	163.680	12945.76	937.26	-412.41	1930.39	1065293.87	718255.00	0.22	-0.22	0.03	
14921.00	90.460	163.800	12945.16	1031.26	-502.65	1956.70	1065320.19	718164.76	0.23	0.19	0.13	
15016.00	90.650	163.810	12944.24	1126.26	-593.87	1983.20	1065346.68	718073.54	0.20	0.20	0.01	
15111.00	90.400	163.830	12943.37	1221.25	-685.11	2009.67	1065373.15	717982.32	0.26	-0.26	0.02	
15206.00	90.340	163.740	12942.75	1316.25	-776.33	2036.20	1065399.68	717891.10	0.11	-0.06	-0.09	
15300.00	90.310	163.670	12942.22	1410.25	-866.55	2062.57	1065426.05	717800.89	0.08	-0.03	-0.07	
15395.00	90.340	164.430	12941.68	1505.25	-957.89	2088.68	1065452.15	717709.55	0.80	0.03	0.80	
15490.00	90.770	164.300	12940.76	1600.24	-1049.37	2114.28	1065477.75	717618.08	0.47	0.45	-0.14	
15585.00	90.830	167.050	12939.43	1695.16	-1141.40	2137.78	1065501.25	717526.06	2.90	0.06	2.89	
15680.00	90.800	168.720	12938.08	1789.90	-1234.27	2157.72	1065521.19	717433.19	1.76	-0.03	1.76	
15774.00	90.770	168.730	12936.80	1883.53	-1326.45	2176.09	1065539.56	717341.02	0.03	-0.03	0.01	
15862.00	90.740	168.120	12935.64	1971.22	-1412.65	2193.75	1065557.22	717254.82	0.69	-0.03	-0.69	
15957.00	90.580	166.190	12934.54	2066.04	-1505.26	2214.87	1065578.33	717162.22	2.04	-0.17	-2.03	
16051.00	90.680	164.620	12933.51	2159.99	-1596.22	2238.55	1065602.02	717071.26	1.67	0.11	-1.67	
16146.00	90.770	162.950	12932.31	2254.98	-1687.43	2265.07	1065628.54	716980.06	1.76	0.09	-1.76	
16241.00	94.350	163.800	12928.06	2349.87	-1778.35	2292.22	1065655.69	716889.14	3.87	3.77	0.89	
16335.00	91.140	163.960	12923.56	2443.75	-1868.54	2318.29	1065681.75	716798.96	3.42	-3.41	0.17	
16430.00	90.150	164.130	12922.49	2538.74	-1959.87	2344.40	1065707.86	716707.63	1.06	-1.04	0.18	
16525.00	89.970	164.150	12922.39	2633.73	-2051.26	2370.36	1065733.82	716616.25	0.19	-0.19	0.02	
16619.00	91.940	164.180	12920.83	2727.71	-2141.67	2396.01	1065759.46	716525.84	2.10	2.10	0.03	
16714.00	91.080	164.340	12918.32	2822.68	-2233.08	2421.77	1065785.22	716434.44	0.92	-0.91	0.17	
16809.00	91.200	164.640	12916.43	2917.65	-2324.60	2447.17	1065810.62	716342.93	0.34	0.13	0.32	



Actual Wellpath Report

UL Dino Juice 18-40-45 WC1 #5H ST02 11855' - 18971' Proj: 19025'
Page 6 of 7



REFERENCE WELLPATH IDENTIFICATION			
Operator	POINT ENERGY PARTNERS PETRO, LLC	Well	UL Dino Juice 18-40-45 WC1 #5H ST02
Field	Phantom (Wolfcamp) - Ward County, TX	API	42-475-38240-02
Facility	UL Dino Juice 18-40-45 Pad	Wellbore	UL Dino Juice 18-40-45 WC1 #5H ST02 AWB
Slot	UL Dino Juice 18-40-45 WC1 #5H	Sidetrack from	UL Dino Juice 18-40-45 WC1 #5H OH FINAL 156'-13562' Proj: 13664 at 11773.00 MD

WELLPATH DATA (204 stations) † = interpolated, ‡ = extrapolated station												
MD [ft]	Inclination [°]	Azimuth [°]	TVD [ft]	Vert Sect [ft]	North [ft]	East [ft]	Grid East [US ft]	Grid North [US ft]	DLS [°/100ft]	Build Rate [°/100ft]	Turn Rate [°/100ft]	Comments
16903.00	90.740	164.540	12914.84	3011.62	-2415.21	2472.14	1065835.59	716252.33	0.50	-0.49	-0.11	
16998.00	90.800	164.320	12913.56	3106.61	-2506.71	2497.64	1065861.09	716160.83	0.24	0.06	-0.23	
17093.00	90.120	164.180	12912.80	3201.60	-2598.14	2523.43	1065886.87	716069.40	0.73	-0.72	-0.15	
17187.00	89.820	163.870	12912.85	3295.60	-2688.51	2549.30	1065912.74	715979.04	0.46	-0.32	-0.33	
17282.00	89.850	164.330	12913.12	3390.59	-2779.88	2575.32	1065938.77	715887.68	0.49	0.03	0.48	
17377.00	89.850	164.670	12913.37	3485.59	-2871.42	2600.71	1065964.15	715796.14	0.36	0.00	0.36	
17472.00	89.850	164.190	12913.62	3580.58	-2962.94	2626.21	1065989.65	715704.63	0.51	0.00	-0.51	
17566.00	89.880	163.020	12913.84	3674.58	-3053.11	2652.74	1066016.18	715614.46	1.25	0.03	-1.24	
17661.00	89.970	163.360	12913.97	3769.57	-3144.05	2680.21	1066043.65	715523.53	0.37	0.09	0.36	
17756.00	90.400	163.490	12913.66	3864.57	-3235.10	2707.32	1066070.75	715432.48	0.47	0.45	0.14	
17851.00	92.090	163.180	12911.60	3959.54	-3326.09	2734.55	1066097.99	715341.51	1.81	1.78	-0.33	
17945.00	92.530	163.430	12907.81	4053.46	-3416.05	2761.53	1066124.97	715251.55	0.54	0.47	0.27	
18040.00	90.460	163.260	12905.33	4148.42	-3507.03	2788.75	1066152.18	715160.57	2.19	-2.18	-0.18	
18135.00	91.760	163.600	12903.49	4243.40	-3598.07	2815.84	1066179.27	715069.54	1.41	1.37	0.36	
18230.00	90.000	163.070	12902.03	4338.38	-3689.06	2843.08	1066206.50	714978.56	1.93	-1.85	-0.56	
18325.00	90.340	162.840	12901.75	4433.38	-3779.89	2870.92	1066234.35	714887.73	0.43	0.36	-0.24	
18419.00	90.120	163.420	12901.37	4527.37	-3869.84	2898.20	1066261.63	714797.79	0.66	-0.23	0.62	
18514.00	89.690	163.360	12901.53	4622.37	-3960.88	2925.36	1066288.78	714706.76	0.46	-0.45	-0.06	
18609.00	91.230	163.530	12900.77	4717.36	-4051.93	2952.43	1066315.85	714615.71	1.63	1.62	0.18	
18704.00	90.920	162.990	12898.98	4812.34	-4142.89	2979.78	1066343.20	714524.75	0.66	-0.33	-0.57	
18799.00	90.710	164.180	12897.63	4907.33	-4234.01	3006.63	1066370.04	714433.64	1.27	-0.22	1.25	
18876.00	91.510	164.090	12896.14	4984.31	-4308.06	3027.67	1066391.09	714359.60	1.05	1.04	-0.12	
18971.00	91.910	164.940	12893.31	5079.26	-4399.57	3053.02	1066416.44	714268.09	0.99	0.42	0.89	Last BH MWD Survey @ 18971'
19025.00‡	91.910	164.940	12891.51	5133.22	-4451.69	3067.05	1066430.46	714215.98	0.00	0.00	0.00	Projection to TD @ 19025'



Actual Wellpath Report

UL Dino Juice 18-40-45 WC1 #5H ST02 11855' - 18971' Proj: 19025'
Page 7 of 7



REFERENCE WELLPATH IDENTIFICATION			
Operator	POINT ENERGY PARTNERS PETRO, LLC	Well	UL Dino Juice 18-40-45 WC1 #5H ST02
Field	Phantom (Wolfcamp) - Ward County, TX	API	42-475-38240-02
Facility	UL Dino Juice 18-40-45 Pad	Wellbore	UL Dino Juice 18-40-45 WC1 #5H ST02 AWB
Slot	UL Dino Juice 18-40-45 WC1 #5H	Sidetrack from	UL Dino Juice 18-40-45 WC1 #5H OH FINAL 156'-13562' Proj: 13664 at 11773.00 MD

TARGETS								
Name	TVD [ft]	North [ft]	East [ft]	Grid East [US ft]	Grid North [US ft]	Latitude	Longitude	Shape
UL Dino Juice 18-40-45 WC1 #5H ST02 - BTP/BHL	12621.43	-12970.32	5554.66	1068917.91	705697.90	31°34'21.4715"N	103°19'24.1878"W	rectangle
2D Rectangle 14434.8 x 40.								
UL Dino Juice 18-40-45 WC1 #5H ST02 - IP2	12724.86	-7964.34	4091.96	1067455.30	710703.56	31°35'10.6060"N	103°19'42.6465"W	point
UL Dino Juice 18-40-45 WC1 #5H ST02 - IP3	12734.60	-9778.47	4622.03	1067985.34	708889.54	31°34'52.8000"N	103°19'35.9566"W	point
UL Dino Juice 18-40-45 WC1 #5H ST02 - IP1	12864.32	-6083.00	3542.25	1066905.63	712584.78	31°35'29.0714"N	103°19'49.5850"W	point
UL Dino Juice 18-40-45 WC1 #5H ST02 - TTP	12991.03	885.16	1506.22	1064869.73	719552.48	31°36'37.4629"N	103°20'15.2905"W	point

WELLPATH COMPOSITION - Ref Wellbore: UL Dino Juice 18-40-45 WC1 #5H ST02 AWB Ref Wellpath: UL Dino Juice 18-40-45 WC1 #5H ST02 11855' - 18971' Proj: 19025'					
Start MD [ft]	End MD [ft]	Positional Uncertainty Model	Log Name/Comment	Wellbore	Survey Date
27.00	11773.00	OWSG MWD rev2 + HRGM	SDT Surface/Intermediate Section MWD Surveys 156'-11773' (Imported)	UL Dino Juice 18-40-45 WC1 #5H OH AWB	01/Sep/2021
11773.00	19025.00	OWSG MWD rev2 + HRGM	8 3/4" BH ATC MWD Surveys 11855'- 18971'	UL Dino Juice 18-40-45 WC1 #5H ST02 AWB	28/Sep/2021

Railroad Commission of Texas
Oil & Gas Division
P. O. Box 12967
Capitol Station
Austin, TX 78711

Attention: Tina Klein

POINT ENERGY PARTNERS PETRO, LLC
UL Dino Juice 18-40-45 WC1 #5H ST02
Phantom (Wolfcamp)
Ward County, TX
API# 42-475-38240-02

I, Gail Deering, Technical Support Engineer, certify that I am employed by Baker Hughes; did conduct or supervise on the day(s) of 09/28/2021 through 10/19/2021 conduct or supervise the taking of a MWD survey from a depth of 11855 feet to a depth of 18971 feet; that the data is true, correct, complete and within the limitations of the tool as set forth by Baker Hughes; that I am authorized and qualified to make this report; that this survey was conducted at the request of POINT ENERGY PARTNERS PETRO, LLC for the UL Dino Juice 18-40-45 WC1 #5 ST02 Well, API No. 42-475-38240-02 in Ward County, Texas; and that I have reviewed this report and find that it conforms to the principles and procedures as set forth by Baker Hughes.

Gail Deering

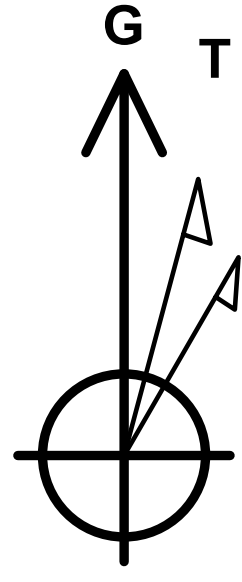
Technical Support Engineer

SO#: 111040962



Company: Point Energy Partners
Well: UL Dino Juice 18-40-45 WC1 #5H
County: Ward County, Texas (NAD 27)
Rig: Nabors M7504
Wellbore: Wellbore #3
Design: Design #3
Date: 16:25, June 13 2022

Geodetic System: US State Plane 1927 (Exact solution)
Datum: NAD 1927 (NADCON CONUS)
Ellipsoid: Clarke 1866
Zone: Texas Central 4203
System Datum: Mean Sea Level



Azimuths to Grid North
True North: 1.55°
Magnetic North: 8.30°

Magnetic Field
Strength: 47082.6nT
Dip Angle: 59.32°
Date: 10/19/2021
Model: HDGM2021

To convert a Magnetic Direction to a Grid Direction, Add 8.300°
To convert a Magnetic Direction to a True Direction, Add 6.750° East
To convert a True Direction to a Grid Direction, Add 1.550°

WELL DETAILS: UL Dino Juice 18-40-45 WC1 #5H

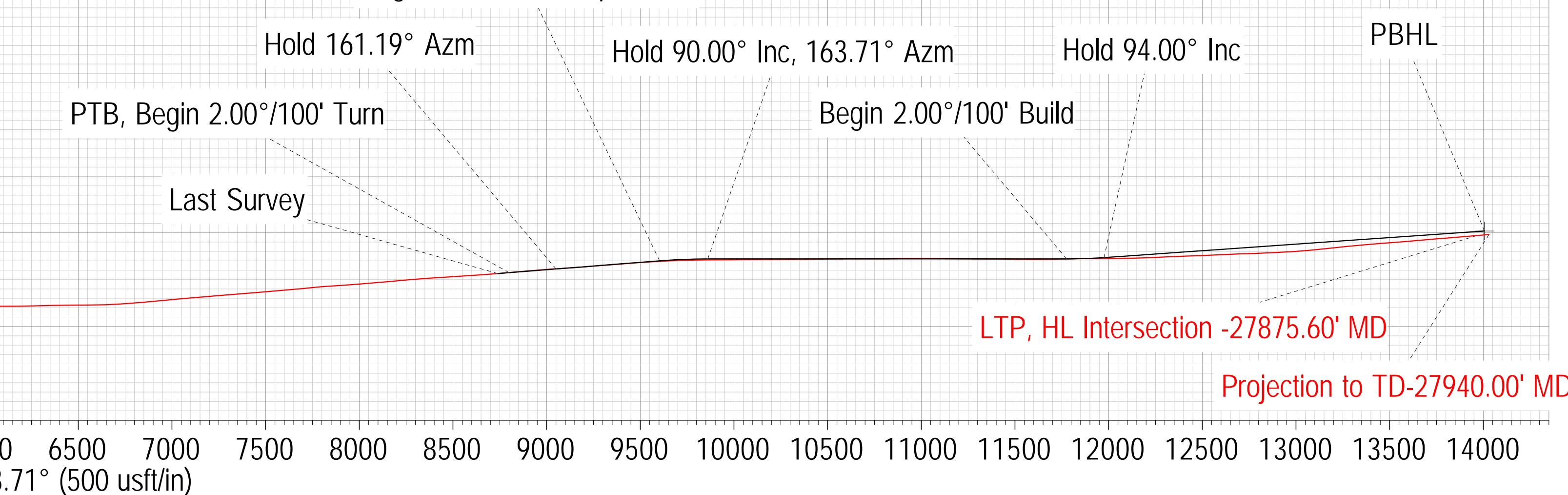
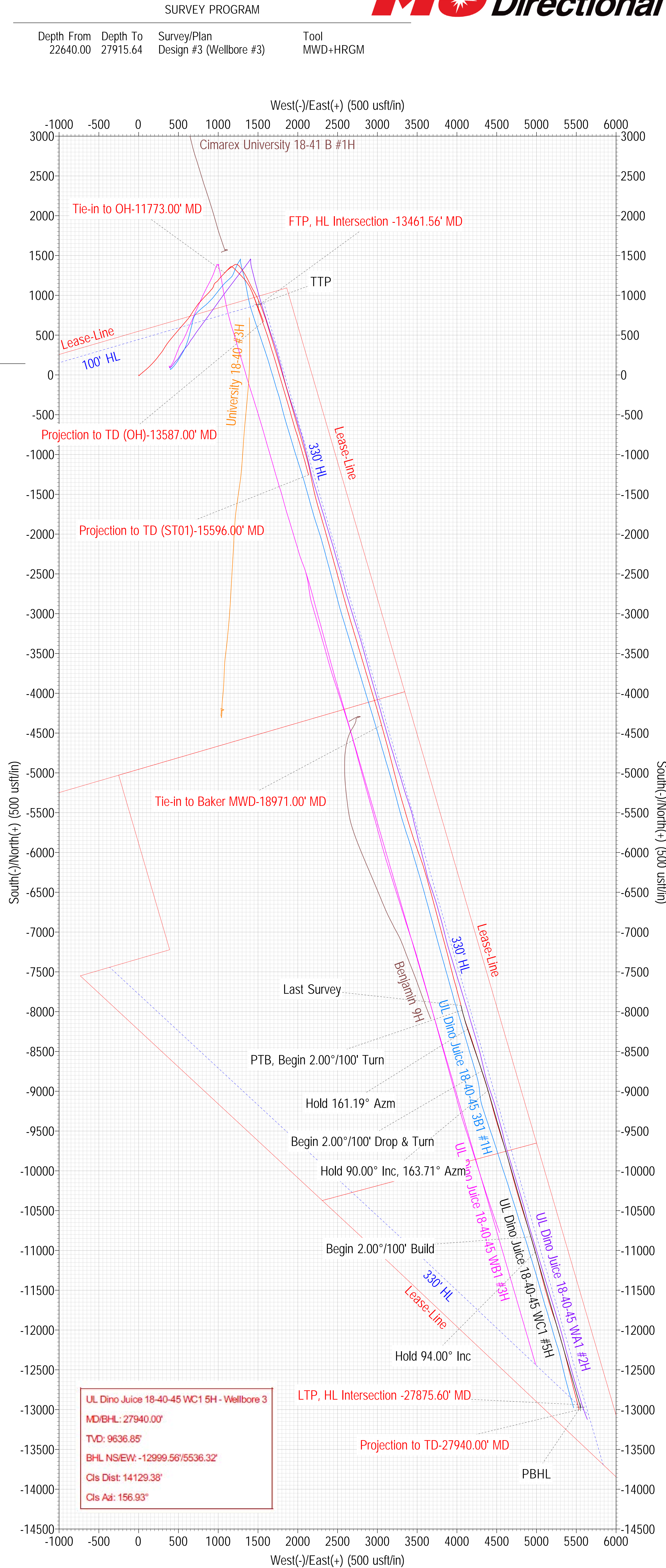
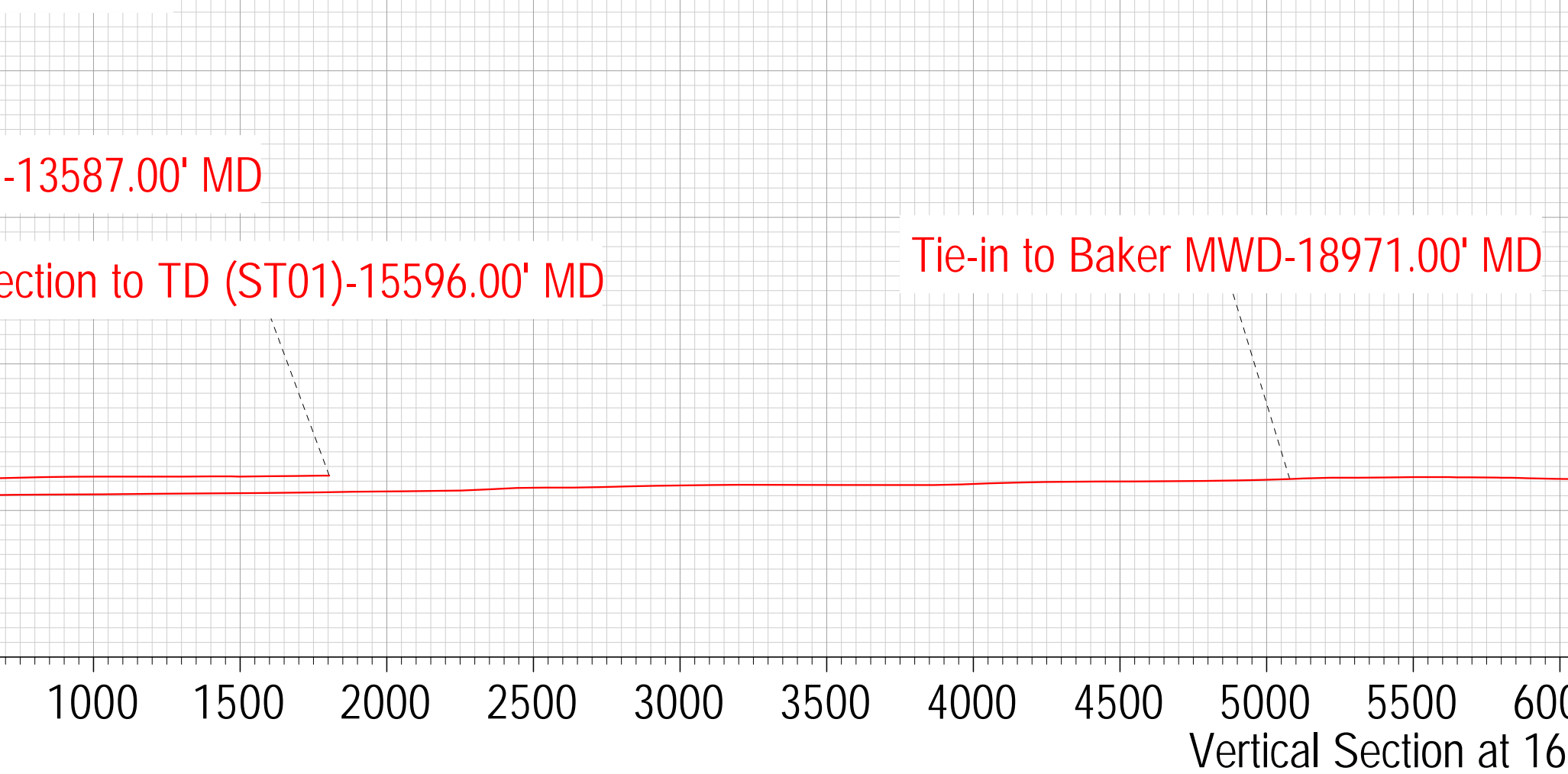
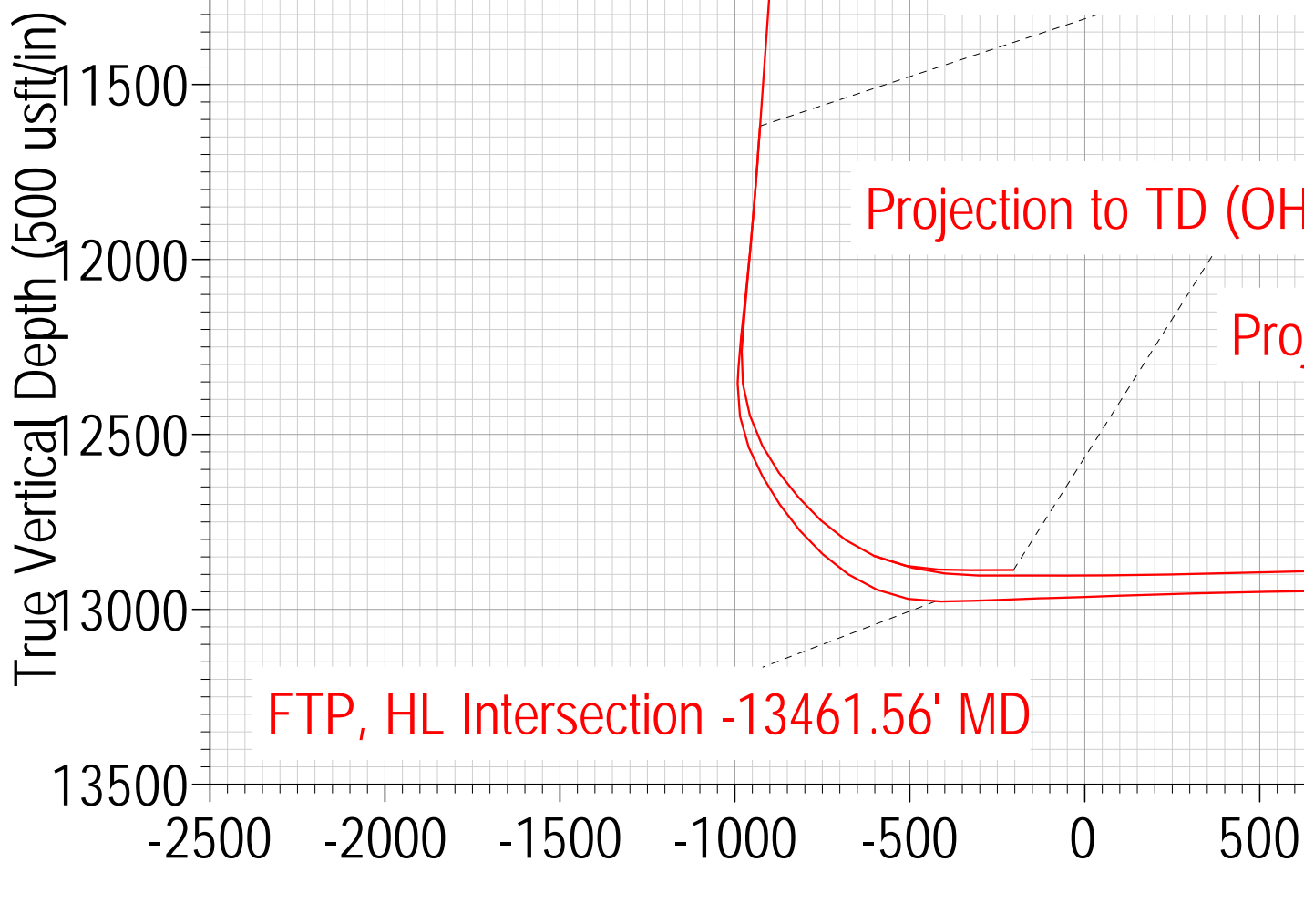
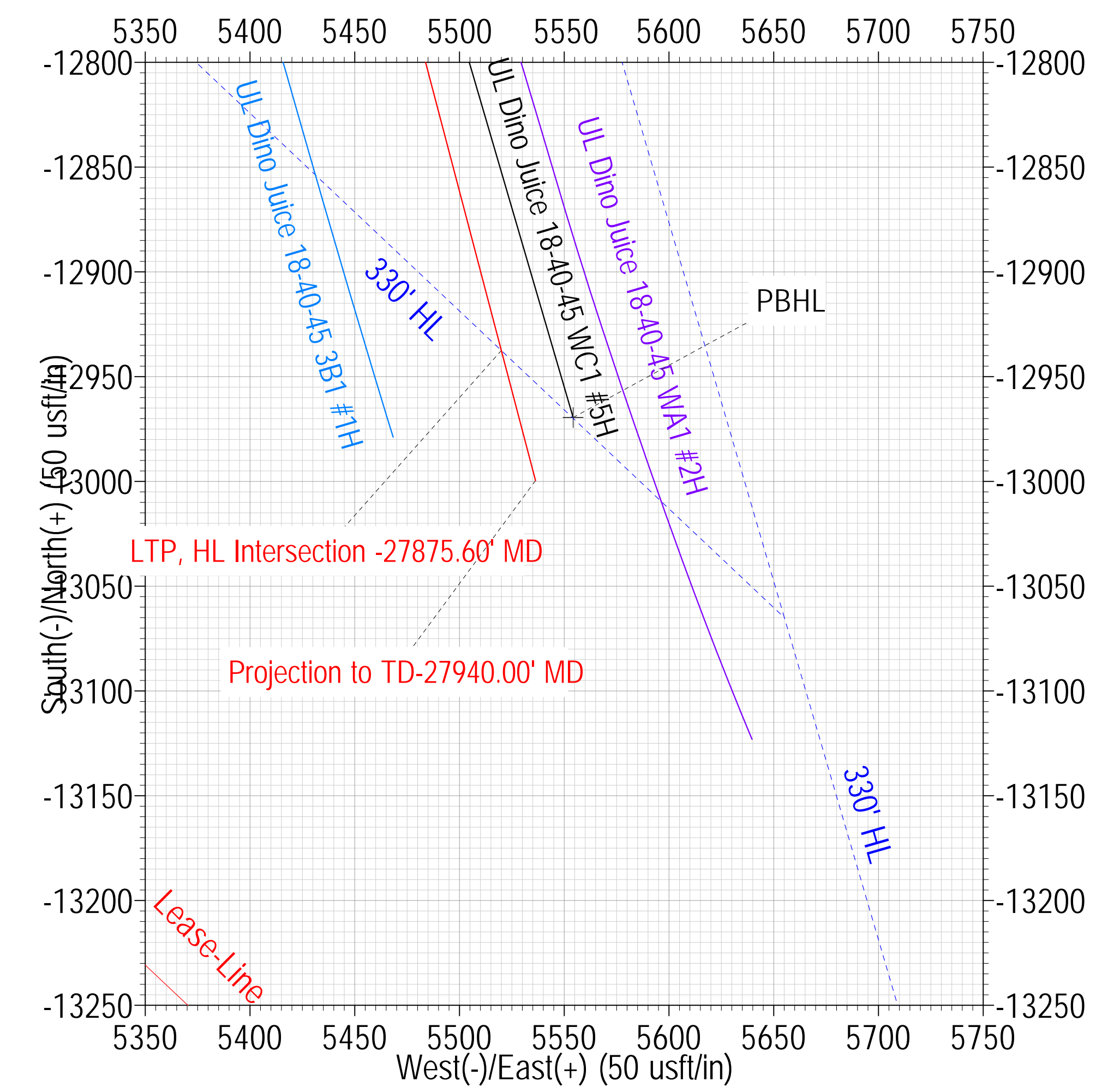
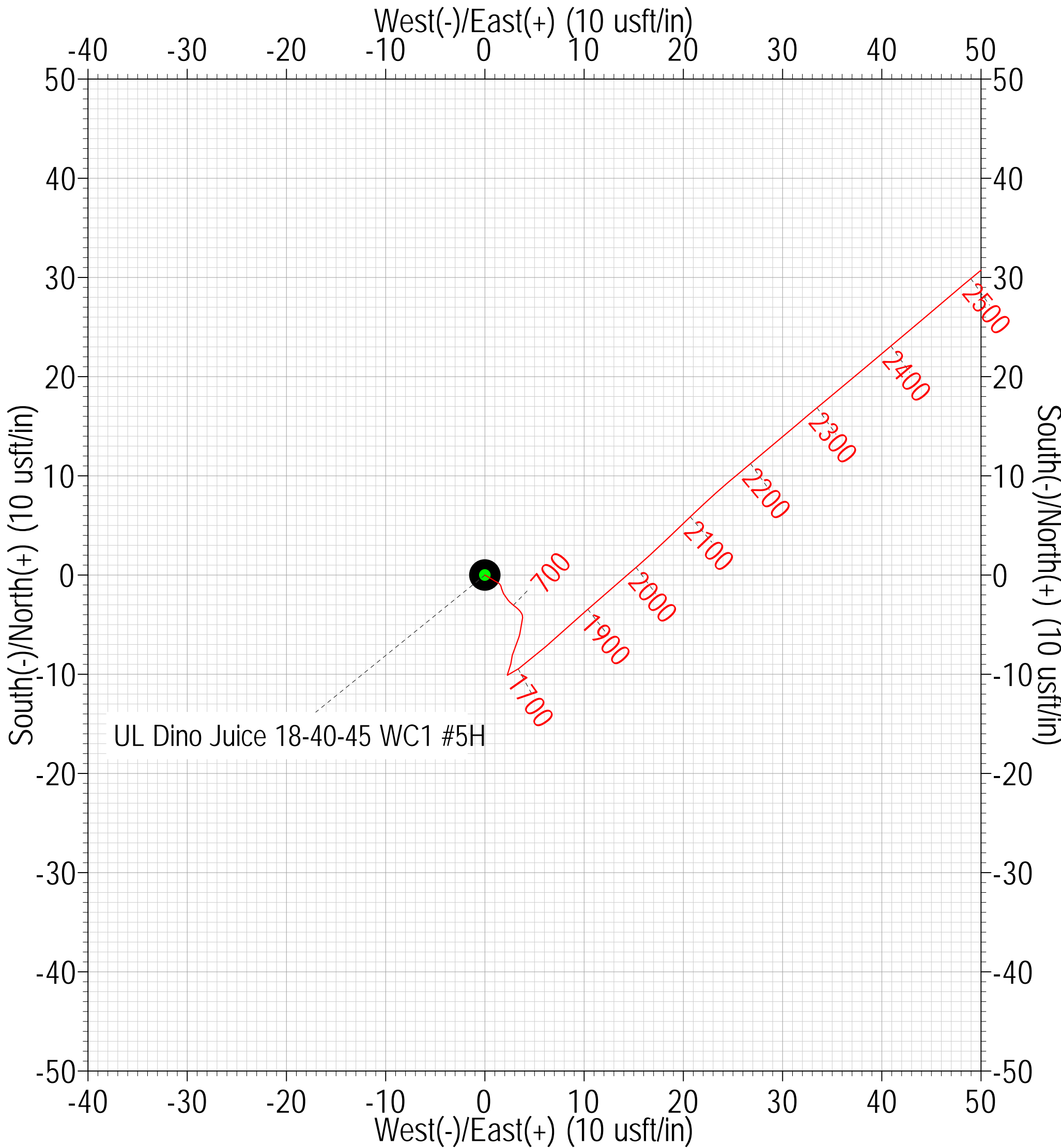
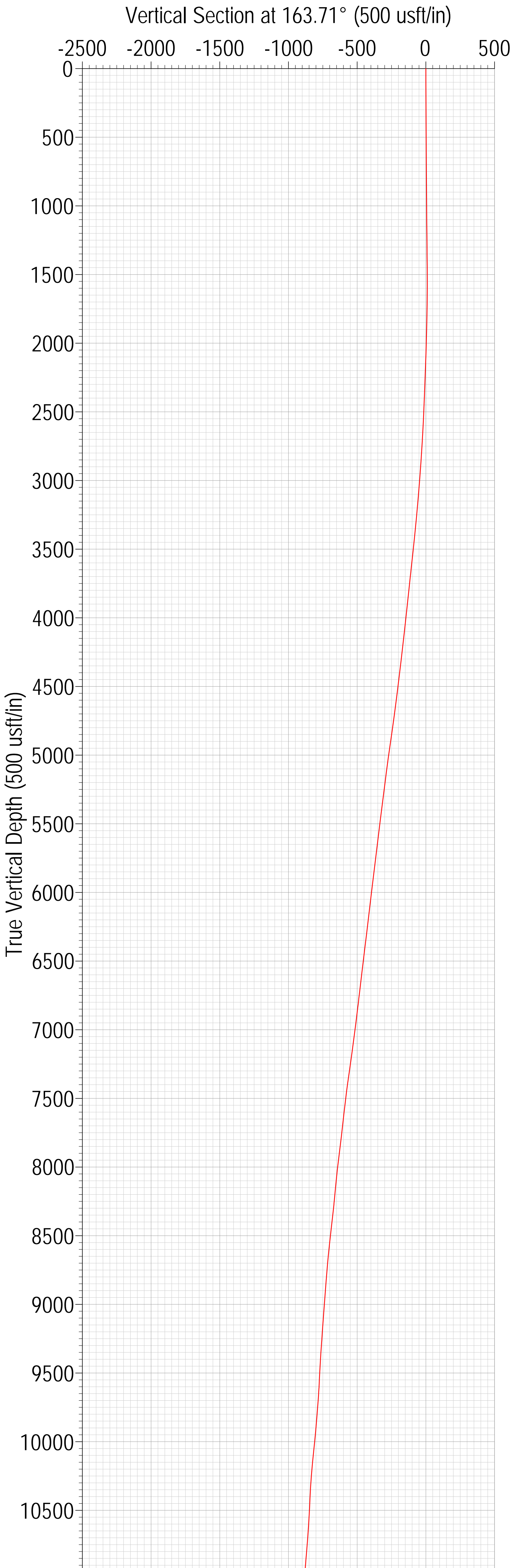
		GL @ 2846.00	Well @ 2873.00usft (Nabors M7504)			
+N/-S	+E/-W	Northing	Easting	Latitude	Longitude	
0.00	0.00	718667.38	1063363.61	31° 36' 28.303 N	103° 20' 32.424 W	

SECTION DETAILS

MD	Inc	Azi	TVD	+N/-S	+E/-W	Dleg	TFace	VSect	Annotation
22640.00	94.51	166.24	12718.18	-7921.73	4050.85	0.00	0.000	8739.91	Last Survey
22700.00	94.51	166.24	12713.46	-7979.83	4065.07	0.00	0.000	8799.67	PTB, Begin 2.00°/100' Turn
22951.88	94.50	161.19	12693.67	-8220.77	4135.47	2.00	-89.911	9050.68	Hold 161.19° Azm
23506.81	94.50	161.19	12650.12	-8744.44	4313.87	0.00	0.000	9603.37	Begin 2.00°/100' Drop & Turn
23764.77	90.00	163.71	12640.00	-8990.12	4391.56	2.00	150.661	9860.97	Hold 90.00° Inc, 163.71° Azm
25679.77	90.00	163.71	12640.00	-10828.26	4928.65	0.00	0.000	11775.97	Begin 2.00°/100' Build
25879.77	94.00	163.71	12633.02	-11020.08	4984.70	2.00	0.000	11975.82	Hold 94.00° Inc
27915.64	94.00	163.71	12491.00	-12969.48	5554.30	0.00	0.000	14006.73	PBHL

TARGET DETAILS

Name	TVD	+N/-S	+E/-W	Northing	Easting	Latitude	Longitude
T2 v3	12640.00	-10828.26	4928.65	707839.12	1068292.26	31° 34' 42.489 N	103° 19' 32.083 W
BTP/BHL v3	12491.00	-12969.48	5554.30	705697.90	1068917.91	31° 34' 21.471 N	103° 19' 24.188 W





3335 Pollok Drive
Conroe, Texas 77303
936.442.2500 (office)
www.msdir.com

4 February 2022

The Railroad Commission of Texas
Oil & Gas Division
PO Box 12967
Austin, TX 78711-2967

Point Energy Partners
UL Dino Juice 18-40-45 WC1 5H
Permit Number: 871440
Survey: UL
Abstract: U119
Field: PHANTOM (WOLFCAMP)
Ward County, Texas

API Number: 42-475-38240

Please find the attached survey performed on the above referenced well by MS Directional LLC; Operator Number 592486.

Other information required by your office is as follows:

Name of Surveyor	Drainhole Number	Surveyed Depths	Dates Performed	Type of Survey
Chris Russell	Sidetrack Wellbore	19017.00' - 27734.00'	10/19/2021 - 01/13/2022	MWD

If any other information is required, please contact the undersigned at the letterhead address and telephone number.

Sincerely,

A handwritten signature in black ink, appearing to read 'CWD' followed by a stylized flourish.

Charles Davis
MWD Operations Manager



**Point Energy Partners
Ward County, Texas (NAD 27)
42-475-38240
UL Dino Juice 18-40-45 WC1 5H
Wellbore 3**

**MS MWD
Certified Survey Report
4 February 2022**

Field	Ward County, Texas (NAD 27) - Point Energy Partners		
CRS	US-SPC27-EXACT / Texas Central 4203	North Reference	GRID
Apply Scale Factor	NO	Scale Factor	0.0
System Datum	Mean Sea Level	Depth Datum->MSL	2873.00 UsFt

Well	UL Dino Juice 18-40-45 WC1 5H		
Local North	17.80 UsFt	Local East	-7.53 UsFt
Map Northing	718667.38 US survey foot	Map Easting	1063363.61 US survey foot
Latitude	31° 36' 28.30337" N	Longitude	103° 20' 32.42430" W
Depth Datum / Rig	Well-Nabors M7504 / Nabors M7504	Datum Elevation	2873.00 UsFt
GL Elevation	2846.00 UsFt		
Grid Convergence	-1.550		

Well bore	UL Dino Juice 18-40-45 WC1 5H - Wellbore 3		
Magnetic Model	User defined	Date	19/10/2021
Total Field (nT)	47082.60	Dip Angle (°)	59.317
Declination (°)	6.750		
VS Origin	User Defined	VS Azimuth	163.71
VS Origin NS	0.00 UsFt	VS Origin EW	0.00 UsFt

Survey Program	MS MWD		
Depth From (UsFt)	Depth To (UsFt)	Survey	Survey Tool
0.00	11773.00	Baker MWD(2)(3)	MWD+HRGM
11855.00	18971.00	Baker MWD	MWD+HRGM
19017.00	27940.00	MS MWD	MWD+HRGM

Survey Report									
MD UsFt	Inc °	Azi °	TVD UsFt	NS UsFt	EW UsFt	VS UsFt	DLS (°/100 UsFt)	BR (°/100 UsFt)	TR (°/100 UsFt)
18971.00	91.91	164.94	12893.31	-4399.57	3053.02	5079.32	0.00	0.00	0.00 Tie In
19017.00	92.88	164.83	12891.39	-4443.94	3065.00	5125.27	2.12	2.11	-0.24
19112.00	90.42	164.04	12888.65	-4535.41	3090.48	5220.21	2.72	-2.59	-0.83
19207.00	89.58	164.39	12888.65	-4626.83	3116.33	5315.21	0.96	-0.88	0.37
19302.00	91.21	165.27	12888.00	-4718.51	3141.18	5410.18	1.95	1.72	0.93
19397.00	90.11	165.18	12886.90	-4810.36	3165.41	5505.14	1.16	-1.16	-0.09
19491.00	89.89	165.62	12886.90	-4901.33	3189.10	5599.10	0.52	-0.23	0.47
19586.00	89.49	165.62	12887.42	-4993.35	3212.70	5694.04	0.42	-0.42	0.00
19681.00	89.32	165.71	12888.40	-5085.38	3236.22	5788.98	0.20	-0.18	0.09
19776.00	88.70	164.83	12890.05	-5177.25	3260.37	5883.93	1.13	-0.65	-0.93
19871.00	88.62	163.60	12892.27	-5268.64	3286.20	5978.90	1.30	-0.08	-1.29
19966.00	90.59	163.51	12892.92	-5359.74	3313.09	6073.89	2.08	2.07	-0.09
20060.00	90.29	163.87	12892.20	-5449.96	3339.49	6167.89	0.50	-0.32	0.38
20155.00	91.52	163.51	12890.70	-5541.12	3366.17	6262.88	1.35	1.29	-0.38
20250.00	91.30	162.64	12888.36	-5631.98	3393.82	6357.84	0.94	-0.23	-0.92
20345.00	90.68	162.72	12886.72	-5722.66	3422.09	6452.81	0.66	-0.65	0.08
20439.00	89.98	161.93	12886.18	-5812.22	3450.63	6546.78	1.12	-0.74	-0.84
20534.00	92.00	160.61	12884.54	-5902.17	3481.13	6641.67	2.54	2.13	-1.39
20629.00	93.71	160.26	12879.81	-5991.57	3512.90	6736.40	1.84	1.80	-0.37
20744.00	94.68	159.56	12871.39	-6099.28	3552.30	6850.84	1.04	0.84	-0.61
20839.00	96.09	163.51	12862.47	-6188.97	3582.25	6945.33	4.40	1.48	4.16
20934.00	94.99	163.16	12853.30	-6279.55	3609.37	7039.88	1.21	-1.16	-0.37
21028.00	94.81	165.10	12845.27	-6369.63	3634.98	7133.53	2.07	-0.19	2.06
21123.00	94.68	163.51	12837.41	-6460.78	3660.59	7228.19	1.67	-0.14	-1.67
21218.00	94.51	165.01	12829.80	-6551.92	3686.27	7322.88	1.58	-0.18	1.58
21313.00	94.59	165.10	12822.27	-6643.41	3710.70	7417.56	0.13	0.08	0.09
21407.00	94.68	165.10	12814.67	-6733.96	3734.79	7511.22	0.10	0.10	0.00
21502.00	95.38	164.66	12806.34	-6825.31	3759.47	7605.84	0.87	0.74	-0.46
21597.00	95.78	165.18	12797.10	-6916.61	3784.07	7700.36	0.69	0.42	0.55
21692.00	94.11	165.01	12788.92	-7008.07	3808.42	7794.98	1.77	-1.76	-0.18
21786.00	93.89	164.83	12782.36	-7098.61	3832.81	7888.73	0.30	-0.23	-0.19
21881.00	94.29	165.01	12775.58	-7190.10	3857.46	7983.47	0.46	0.42	0.19
21976.00	94.99	165.27	12767.90	-7281.62	3881.75	8078.12	0.79	0.74	0.27
22071.00	94.81	165.36	12759.78	-7373.18	3905.74	8172.74	0.21	-0.19	0.09
22166.00	95.30	166.33	12751.41	-7464.94	3928.88	8267.30	1.14	0.52	1.02
22260.00	93.89	164.92	12743.88	-7555.70	3952.15	8360.94	2.12	-1.50	-1.50
22355.00	93.71	164.48	12737.59	-7647.13	3977.16	8455.72	0.50	-0.19	-0.46
22450.00	93.49	164.22	12731.62	-7738.43	4002.74	8550.53	0.36	-0.23	-0.27
22545.00	94.11	165.36	12725.32	-7829.90	4027.60	8645.30	1.36	0.65	1.20
22640.00	94.51	166.24	12718.19	-7921.73	4050.84	8739.97	1.02	0.42	0.93
22716.00	94.99	166.42	12711.89	-7995.33	4068.74	8815.63	0.67	0.63	0.24
22810.00	95.21	162.37	12703.53	-8085.48	4093.92	8909.23	4.30	0.23	-4.31
22905.00	93.89	160.61	12696.00	-8175.28	4123.99	9003.85	2.31	-1.39	-1.85
23000.00	93.71	160.26	12689.70	-8264.60	4155.73	9098.49	0.41	-0.19	-0.37
23095.00	94.29	162.11	12683.07	-8354.30	4186.29	9193.16	2.04	0.61	1.95
23190.00	94.29	161.93	12675.97	-8444.40	4215.54	9287.85	0.19	0.00	-0.19
23285.00	94.59	161.93	12668.61	-8534.54	4244.91	9382.52	0.32	0.32	0.00
23379.00	94.29	162.37	12661.33	-8623.65	4273.64	9476.20	0.57	-0.32	0.47
23474.00	93.58	162.11	12654.81	-8713.91	4302.55	9570.95	0.80	-0.75	-0.27

Survey Report

MD UsFt	Inc °	Azi °	TVD UsFt	NS UsFt	EW UsFt	VS UsFt	DLS (°/100 UsFt)	BR (°/100 UsFt)	TR (°/100 UsFt)
23569.00	92.31	162.28	12649.93	-8804.24	4331.56	9665.79	1.35	-1.34	0.18
23664.00	91.30	162.37	12646.94	-8894.71	4360.39	9760.71	1.07	-1.06	0.09
23759.00	90.51	163.16	12645.44	-8985.43	4388.53	9855.68	1.18	-0.83	0.83
23854.00	90.29	164.83	12644.78	-9076.74	4414.73	9950.68	1.77	-0.23	1.76
23948.00	90.11	165.27	12644.45	-9167.56	4438.97	10044.65	0.51	-0.19	0.47
24043.00	90.51	165.18	12643.94	-9259.42	4463.20	10139.62	0.43	0.42	-0.09
24138.00	90.42	162.90	12643.16	-9350.75	4489.32	10234.61	2.40	-0.09	-2.40
24233.00	90.29	162.99	12642.58	-9441.57	4517.18	10329.60	0.17	-0.14	0.09
24327.00	90.51	162.64	12641.92	-9531.37	4544.95	10423.58	0.44	0.23	-0.37
24422.00	90.68	162.46	12640.93	-9621.99	4573.44	10518.56	0.26	0.18	-0.19
24517.00	90.51	162.11	12639.95	-9712.48	4602.35	10613.52	0.41	-0.18	-0.37
24612.00	89.89	164.39	12639.62	-9803.44	4629.72	10708.51	2.49	-0.65	2.40
24707.00	89.89	164.92	12639.80	-9895.06	4654.86	10803.50	0.56	0.00	0.56
24802.00	91.69	165.36	12638.49	-9986.87	4679.22	10898.46	1.95	1.89	0.46
24897.00	89.41	164.83	12637.58	-10078.66	4703.66	10993.42	2.46	-2.40	-0.56
24992.00	89.32	165.10	12636.63	-10170.40	4728.30	11088.39	0.30	-0.09	0.28
25086.00	89.71	163.51	12639.42	-10260.89	4753.73	11182.38	1.74	0.41	-1.69
25181.00	89.58	163.08	12640.01	-10351.88	4781.03	11277.37	0.47	-0.14	-0.45
25276.00	89.71	162.81	12640.60	-10442.70	4808.89	11372.36	0.32	0.14	-0.28
25371.00	89.32	162.37	12641.41	-10533.34	4837.32	11467.34	0.62	-0.41	-0.46
25466.00	89.32	162.37	12642.53	-10623.88	4866.09	11562.31	0.00	0.00	0.00
25561.00	90.51	162.64	12642.67	-10714.48	4894.65	11657.28	1.28	1.25	0.28
25656.00	91.60	162.72	12640.93	-10805.16	4922.92	11752.25	1.15	1.15	0.08
25750.00	90.51	162.99	12639.19	-10894.96	4950.63	11846.22	1.19	-1.16	0.29
25845.00	90.51	164.66	12638.35	-10986.19	4977.09	11941.22	1.76	0.00	1.76
25940.00	90.90	164.92	12637.18	-11077.86	5002.01	12036.19	0.49	0.41	0.27
26035.00	90.51	165.27	12636.01	-11169.66	5026.45	12131.16	0.55	-0.41	0.37
26130.00	92.62	165.71	12633.42	-11261.59	5050.24	12226.07	2.27	2.22	0.46
26224.00	93.10	165.71	12628.73	-11352.56	5073.41	12319.89	0.51	0.51	0.00
26319.00	91.69	164.13	12624.76	-11444.21	5098.11	12414.79	2.23	-1.48	-1.66
26414.00	91.91	164.31	12621.77	-11535.58	5123.93	12509.73	0.30	0.23	0.19
26509.00	93.32	163.16	12617.44	-11626.68	5150.51	12604.63	1.91	1.48	-1.21
26604.00	92.00	161.76	12613.03	-11717.16	5179.10	12699.50	2.02	-1.39	-1.47
26699.00	91.52	161.58	12610.11	-11807.30	5208.97	12794.40	0.54	-0.51	-0.19
26793.00	92.88	161.58	12606.50	-11896.41	5238.65	12888.26	1.45	1.45	0.00
26888.00	93.71	162.72	12601.04	-11986.69	5267.72	12983.07	1.48	0.87	1.20
26983.00	95.38	163.34	12593.51	-12077.26	5295.36	13077.76	1.87	1.76	0.65
27078.00	96.00	164.48	12584.10	-12168.09	5321.56	13172.29	1.36	0.65	1.20
27173.00	95.78	165.27	12574.35	-12259.31	5346.21	13266.76	0.86	-0.23	0.83
27268.00	95.21	165.71	12565.25	-12350.86	5369.91	13361.28	0.76	-0.60	0.46
27362.00	94.29	165.89	12557.47	-12441.68	5392.89	13454.89	1.00	-0.98	0.19
27457.00	94.59	166.06	12550.11	-12533.57	5415.84	13549.54	0.36	0.32	0.18
27552.00	94.90	165.98	12542.25	-12625.44	5438.71	13644.13	0.34	0.33	-0.08
27647.00	94.68	165.36	12534.32	-12717.16	5462.14	13738.75	0.69	-0.23	-0.65
27734.00	94.81	165.27	12527.12	-12801.03	5484.12	13825.41	0.18	0.15	-0.10
27940.00	94.81	165.27	12509.85	-12999.56	5536.31	14030.61	0.00	0.00	0.00 PTB



3335 Pollok Drive
Conroe, Texas 77303
936.442.2500 (office)
www.msdir.com

MS Directional LLC Survey Data Certification

MS Directional LLC Job Number: MSMO-88410
Survey Type: MWD
Operating Company: Point Energy Partners
Well Name and Number: UL Dino Juice 18-40-45 WC1 5H
Drainhole Number: Sidetrack Wellbore
Location: Ward, Texas
API Number: 42-475-38240
Tie In Depth: 18971.00
Surveyed Depths: 19017.00' - 27734.00'
Projected TD Survey: 27940.00'
Dates Performed: 10/19/2021 - 01/13/2022

To the best of my knowledge, I certify the following:

1. The data is true, correct and complete and within the limitations of the tool set forth by MS Directional LLC
2. I am authorized and qualified to make this report; and
3. I have reviewed this report and find it conforms to the principles and procedures as set forth by MS Directional LLC

MWD Surveyor Name: Chris Russell

MWD Operations Manager: Charles Davis

Signature:

A handwritten signature in black ink, appearing to read "CWD" followed by a stylized flourish.

Date: 02/04/2022

Email: charles.davis@msdir.com