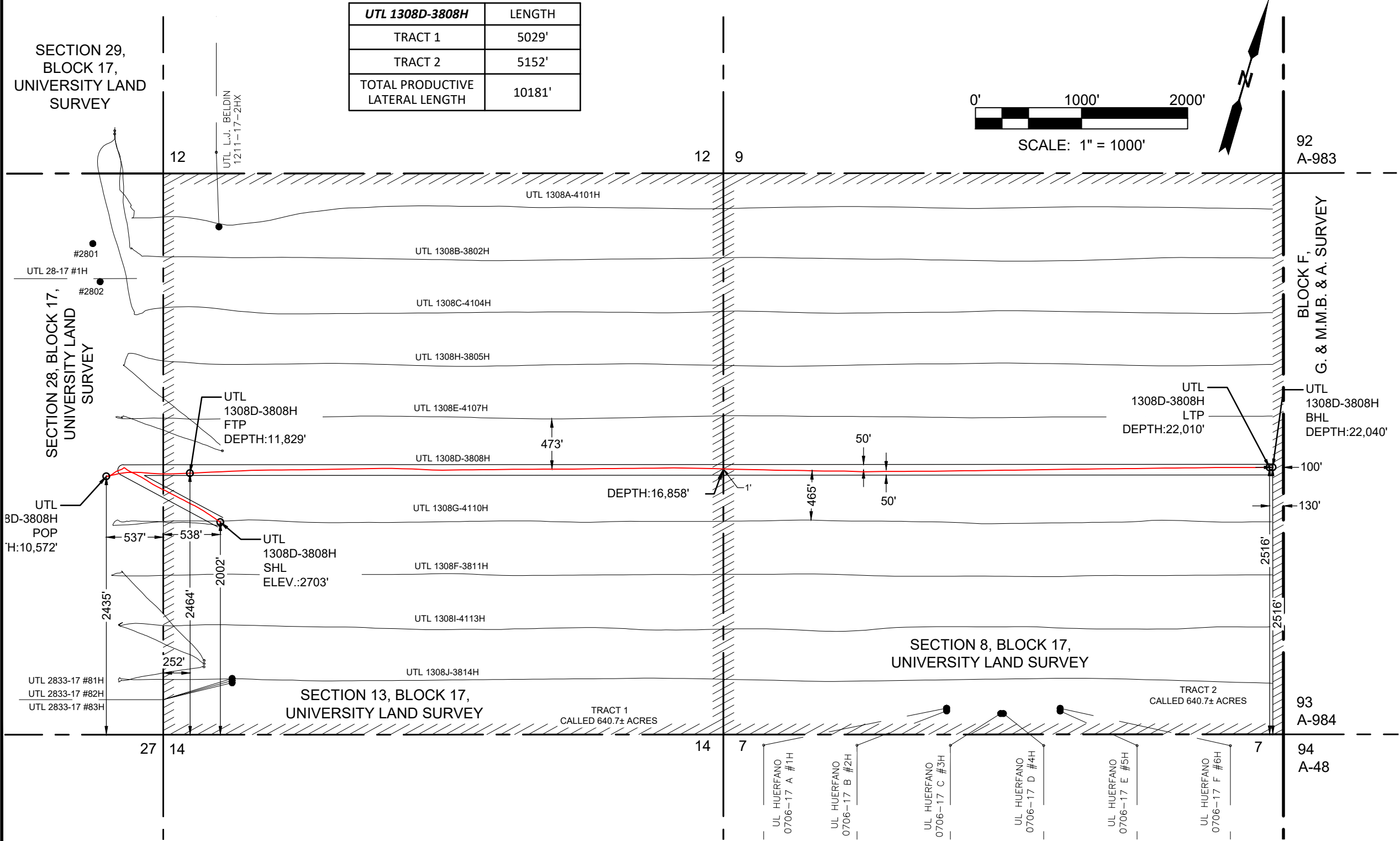


UTL 1308D-3808H	EASTING (X) (NAD 27)	NORTHING (Y) (NAD 27)	LATITUDE (NAD 27)	LONGITUDE (NAD 27)	SECTION LINE		SECTION LINE		LEASE LINE		LEASE LINE		SECTION
					FOOTAGE	FNL/FSL	FOOTAGE	FEL\FWL	FOOTAGE	FNL/FSL	FOOTAGE	FEL\FWL	
SURFACE HOLE LOCATION (SHL)	1108698.3	723538.0	31.624537	-103.197168	2002'	FSL	538'	FWL	2002'	FSL	538'	FWL	13
POINT OF PENETRATION (POP)	1107545.7	723651.7	31.624768	-103.200879	2435'	FSL	537'	FEL	2435'	FSL	537'	FEL	28
FIRST TAKE POINT (FTP)	1108295.0	723901.2	31.625507	-103.198494	2464'	FSL	252'	FWL	2464'	FSL	252'	FWL	13
LAST TAKE POINT (LTP)	1118048.0	726805.7	31.634176	-103.167407	2516'	FSL	130'	FEL	2516'	FSL	130'	FEL	8
BOTTOM HOLE LOCATION (BHL)	1118076.7	726814.3	31.634202	-103.167316	2516'	FSL	100'	FEL	2516'	FSL	100'	FEL	8



**NOTES:**

- THE BASIS OF BEARING OF THE SURVEY IS THE TEXAS COORDINATE SYSTEM, NORTH AMERICAN DATUM 1927 (NAD 27), CENTRAL ZONE (4203).
- ALL TEXAS STATE PLANE COORDINATES AND GEOGRAPHIC COORDINATES SHOWN HEREON ARE NAD 27 GRID COORDINATES AS COMPUTED BY CORPSCON VERSION 6.0.1. ALL GEOGRAPHIC COORDINATES SHOWN HEREON WERE CONVERTED USING CORPSCON VERSION 6.0.1. UNLESS OTHERWISE NOTED, ALL DISTANCES SHOWN HEREON ARE GRID DISTANCES AND THEY CAN BE CONVERTED TO SURFACE WHEN MULTIPLIED WITH A "SURFACE ADJUSTMENT FACTOR" OF 1.000191647, AS CALCULATED BY CORPSCON.
- ELEVATIONS SHOWN HEREON ARE NAVD88 AS DERIVED BY GPS.
- THIS EXHIBIT IS FOR TEXAS RAILROAD COMMISSION WELL PERMITTING PURPOSES ONLY. BOUNDARY LINES AND ACREAGE SHOWN HEREON REFLECT THE SURVEYORS PROFESSIONAL OPINION OF MINERAL RIGHTS AS DETERMINED FROM CLIENT-PROVIDED OIL AND GAS MINERAL LEASE DOCUMENTATION. THE INFORMATION DEPICTED HEREON SHALL NOT BE USED IN THE CONVEYANCE OF FEE TITLE TO REAL PROPERTY.
- ALL MEASUREMENTS TO LEASE, UNIT, AND SURVEY LINES ARE PERPENDICULAR TO SAID LINES.
- THIS SURVEY WAS PREPARED WITHOUT THE BENEFIT OF A TITLE REPORT.
- THE AS-DRILLED DATA USED TO DEPICT THE WELL BORE PATH WAS PROVIDED BY OTHERS. NO WARRANTY IS EITHER EXPRESSED OR IMPLIED AS TO THE ACCURACY OF THE INFORMATION HEREIN.



**HALFF**<sup>®</sup>  
3300 NORTH A STREET, BUILDING 2, SUITE 120  
MIDLAND, TX 79705-5471  
TEL (432) 253-3255  
TBPELS SURVEYING FIRM #10193998

DATE: 3/23/2022  
BY: K. NYRKKANEN  
AVO: 46846.011

- LEGEND**
- SECTION LINE
  - BLOCK/TOWNSHIP LINE
  - LEASE LINE
  - SUBJECT LATERAL
  - AS-DRILLED LATERAL
  - PERMITTED LATERAL
  - PROPOSED LATERAL
  - PROPOSED WELL
  - EXISTING WELL

NOTE: AREA IS LOCATED APPROXIMATELY 7.5 MILES NORTHWEST OF PYOTE, WARD COUNTY, TEXAS

CONTINENTAL RESOURCES, INC.

FINAL AS-DRILLED PLAT

UTL 1308D-3808H  
TRACT 1-640.7± ACRES  
TRACT 2-640.7± ACRES  
TOTAL TRACT-1281.4± ACRES  
(SURFACE AREA)

LOCATED IN  
SECTION 8, SECTION 13,  
& SECTION 28,  
BLOCK 17,  
UNIVERSITY LAND SURVEY,  
WARD COUNTY, TEXAS