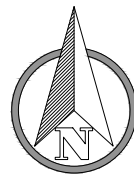
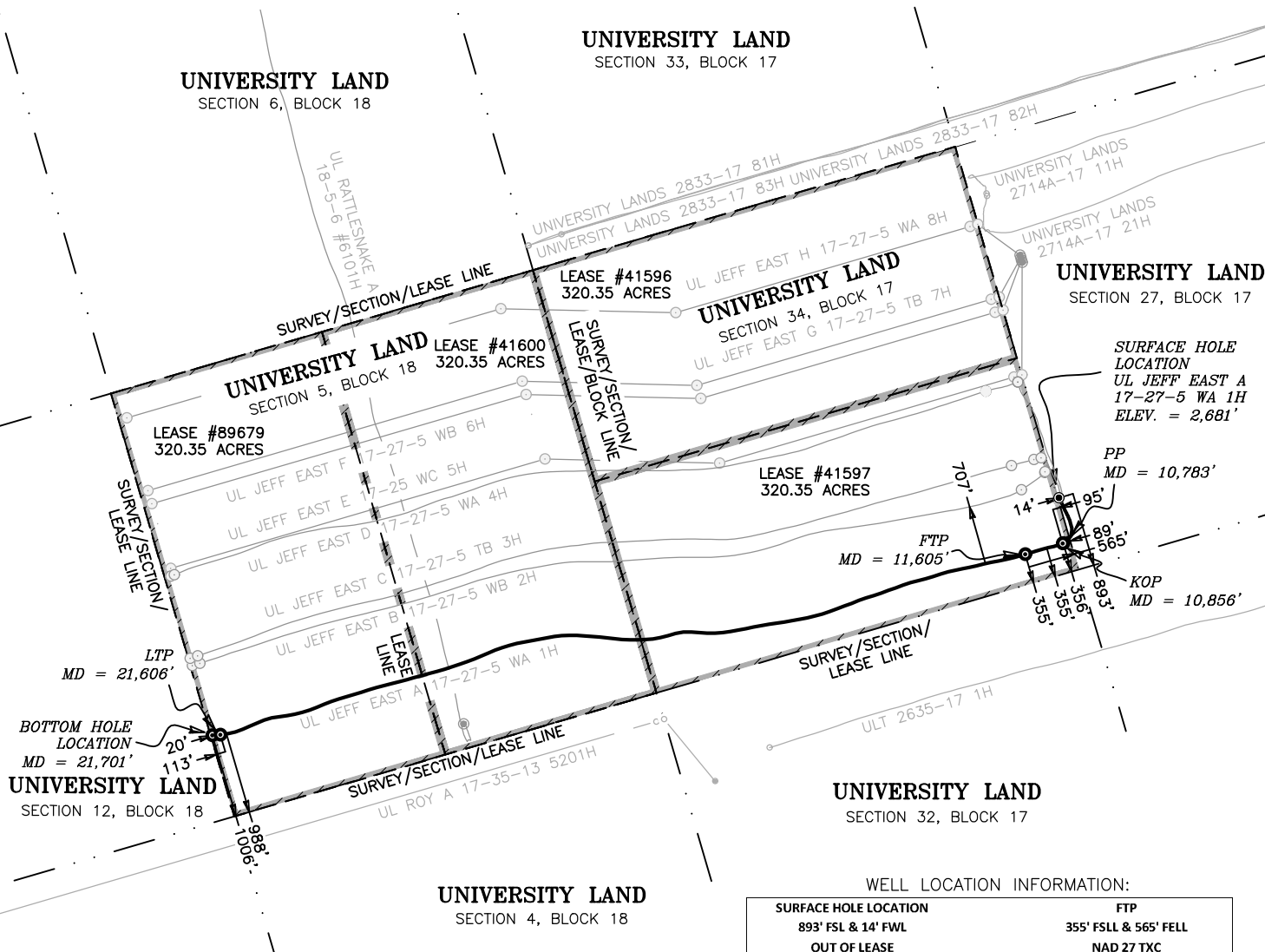


LEASE #	CALLED ACREAGE	LATERAL LENGTH
41596	320.35	N/A
41597	320.35	4752.95'
41600	320.35	2700.68'
89679	320.35	2533.94'
TOTAL	1281.40	9987.57'



0 1000' 2000'  
1" = 2000 FEET



#### LEGEND

— SURVEY LINE  
- - - LEASE LINE

#### GENERAL NOTES

- COORDINATES SHOWN ARE BASED ON THE TEXAS STATE PLANE COORDINATE SYSTEM OF NAD 27, TEXAS CENTRAL ZONE, 4203.
- VERTICAL DATUM IS NAVD 88
- LATITUDE AND LONGITUDE ARE NAD 27 AS SHOWN
- AREA, DISTANCES, AND COORDINATES ARE "GRID".
- UNITS ARE UNITED STATES SURVEY FOOT.
- ALL LEASE AND TRACT INFORMATION SHOWN HERE ON IS DONE SO BY LIMITED DEED RECORD INFORMATION ONLY.
- ALL ACREAGES SHOWN ARE BY DEED AND LEASE CALL, EXCEPT WHERE NOTED.
- THIS IS NOT IN ANY WAY A "BOUNDARY SURVEY".

I HEREBY STATE THAT THIS PLAT  
SHOWS THE SUBJECT SURFACE  
LOCATION AS STAKED ON THE GROUND.

JOHN E. KOWALIK  
REGISTERED PROFESSIONAL LAND SURVEYOR  
STATE OF TEXAS NO. 6408



#### WELL LOCATION INFORMATION:

SURFACE HOLE LOCATION	FTP
893' FSLL & 14' FWL OUT OF LEASE NAD 27 TXC Y = 715,768.03 X = 1,104,918.38 LAT. = 31.602915 °N LONG. = 103.208663 °W NAD 83 TXC Y = 10,558,343.73 X = 1,401,383.49 LAT. = 31.603047 °N LONG. = 103.209107 °W	355' FSLL & 565' FELL NAD 27 TXC Y = 715,089.08 X = 1,104,513.56 LAT. = 31.601020 °N LONG. = 103.209906 °W NAD 83 TXC Y = 10,557,664.76 X = 1,400,978.67 LAT. = 31.601152 °N LONG. = 103.210351 °W
PP	LTP
356' FSLL & 89' FELL NAD 27 TXC Y = 715,223.78 X = 1,104,970.46 LAT. = 31.601423 °N LONG. = 103.208450 °W NAD 83 TXC Y = 10,557,799.47 X = 1,401,435.58 LAT. = 31.601555 °N LONG. = 103.208895 °W	988' FSLL & 113' FWLL NAD 27 TXC Y = 712,925.21 X = 1,094,851.16 LAT. = 31.594383 °N LONG. = 103.240749 °W NAD 83 TXC Y = 10,555,500.85 X = 1,391,316.19 LAT. = 31.594514 °N LONG. = 103.241195 °W
KOP	BOTTOM HOLE LOCATION
355' FSLL & 95' FELL NAD 27 TXC Y = 715,221.17 X = 1,104,964.64 LAT. = 31.601416 °N LONG. = 103.208469 °W NAD 83 TXC Y = 10,557,796.85 X = 1,401,429.76 LAT. = 31.601547 °N LONG. = 103.208913 °W	1,006' FSLL & 20' FWLL NAD 27 TXC Y = 712,916.30 X = 1,094,756.59 LAT. = 31.594352 °N LONG. = 103.241052 °W NAD 83 TXC Y = 10,555,491.94 X = 1,391,221.62 LAT. = 31.594483 °N LONG. = 103.241497 °W

#### PLAT OF:

A FINAL AS-DRILLED WELL LOCATION FOR:  
**PERCUSSION PETROLEUM OPER II, LLC.**  
**UL JEFF EAST A 17-27-5 WA 1H**

SITUATED IN THE UNIVERSITY LANDS SURVEY, SECTION 5,  
BLOCK 17, THE UNIVERSITY LANDS SURVEY, SECTION 34,  
BLOCK 17, AND BEING APPROXIMATELY 7.9 MILES  
NORTHWEST OF PYOTE IN WARD COUNTY, TEXAS.

DATE: 04-19-2022  
DRAWN BY: RS  
CHECKED BY: CH  
FIELD CREW: DN  
PROJECT NO: 2021060687  
SCALE: 1"=2000'  
SHEET: 1  
REVISION: 0



550 Bailey Ave., 205 - Fort Worth, TX 76107  
Ph: 817.349.9800 - Fax: 979.732.5271  
TBPE Firm 17957 | TBPLS Firm 10193887  
www.fscinc.net

© COPYRIGHT 2016 - ALL RIGHTS RESERVED