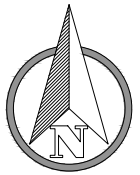
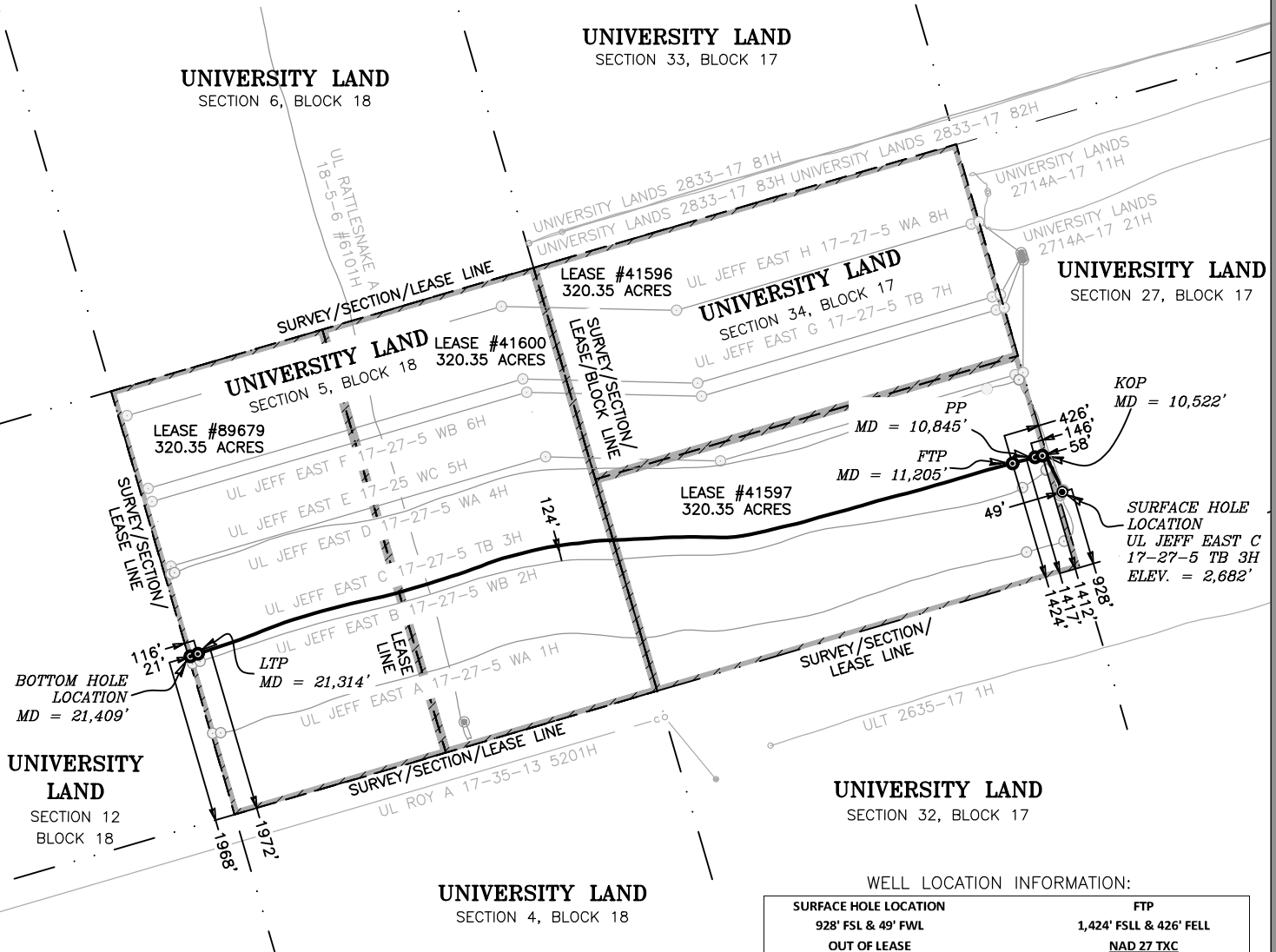


LEASE #	CALLED ACREAGE	LATERAL LENGTH
41596	320.35	N/A
41597	320.35	4907.44'
41600	320.35	2653.87'
89679	320.35	2527.64'
TOTAL	1281.40	10,088.95'



0 1000' 2000'
1" = 2000 FEET



LEGEND

— SURVEY LINE
- - - LEASE LINE

GENERAL NOTES

- COORDINATES SHOWN ARE BASED ON THE TEXAS STATE PLANE COORDINATE SYSTEM OF NAD 27, TEXAS CENTRAL ZONE, 4203.
- VERTICAL DATUM IS NAVD 88
- LATITUDE AND LONGITUDE ARE NAD 27 AS SHOWN
- AREA, DISTANCES, AND COORDINATES ARE "GRID".
- UNITS ARE UNITED STATES SURVEY FOOT.
- ALL LEASE AND TRACT INFORMATION SHOWN HERE ON IS DONE SO BY LIMITED DEED RECORD INFORMATION ONLY.
- ALL ACREAGES SHOWN ARE BY DEED AND LEASE CALL, EXCEPT WHERE NOTED.
- THIS IS NOT IN ANY WAY A "BOUNDARY SURVEY".

I HEREBY STATE THAT THIS PLAT
SHOWS THE SUBJECT SURFACE
LOCATION AS STAKED ON THE GROUND.

JOHN E. KOWALIK
REGISTERED PROFESSIONAL LAND SURVEYOR
STATE OF TEXAS NO. 6408



WELL LOCATION INFORMATION:

SURFACE HOLE LOCATION		FTP	
928' FSL & 49' FWL		1,424' FSL & 426' FELL	
OUT OF LEASE		NAD 27 TXC	
NAD 27 TXC		Y = 716,154.65	
Y = 715,811.95		X = 1,104,347.73	
X = 1,104,942.15		LAT. = 31.603937 °N	
LAT. = 31.603038 °N		LONG. = 103.210527 °W	
LONG. = 103.208590 °W		NAD 83 TXC	
NAD 83 TXC		Y = 10,558,730.35	
Y = 10,558,387.65		X = 1,400,812.83	
X = 1,401,407.26		LAT. = 31.604068 °N	
LAT. = 31.603169 °N		LONG. = 103.210972 °W	
LONG. = 103.209035 °W		LTP	
PP		1,972' FSL & 116' FWLL	
1,412' FSL & 58' FELL		NAD 27 TXC	
NAD 27 TXC		Y = 713,870.29	
Y = 716,226.27		X = 1,094,577.78	
X = 1,104,618.03		LAT. = 31.596961 °N	
LAT. = 31.604153 °N		LONG. = 103.241706 °W	
LONG. = 103.209665 °W		NAD 83 TXC	
NAD 83 TXC		Y = 10,556,445.95	
Y = 10,558,801.97		X = 1,391,042.80	
X = 1,401,083.14		LAT. = 31.597092 °N	
LAT. = 31.604285 °N		LONG. = 103.242152 °W	
LONG. = 103.210110 °W		BOTTOM HOLE LOCATION	
KOP		1,968' FSL & 21' FWL	
1,417' FSL & 146' FELL		1,968' FSL & 21' FWLL	
NAD 27 TXC		NAD 27 TXC	
Y = 716,246.61		Y = 713,839.42	
X = 1,104,704.02		X = 1,094,487.94	
LAT. = 31.604215 °N		LAT. = 31.596869 °N	
LONG. = 103.209391 °W		LONG. = 103.241992 °W	
NAD 83 TXC		NAD 83 TXC	
Y = 10,558,822.31		Y = 10,556,415.08	
X = 1,401,169.13		X = 1,390,952.95	
LAT. = 31.604347 °N		LAT. = 31.597001 °N	
LONG. = 103.209835 °W		LONG. = 103.242438 °W	

PLAT OF:

A FINAL AS-DRILLED WELL LOCATION FOR:
PERCUSSION PETROLEUM OPER II, LLC.
UL JEFF EAST C 17-27-5 TB 3H

SITUATED IN THE UNIVERSITY LANDS SURVEY, SECTION 5,
BLOCK 18, THE UNIVERSITY LANDS SURVEY, SECTION 34,
BLOCK 17, AND BEING APPROXIMATELY 7.9 MILES
NORTHWEST OF PYOTE IN WARD COUNTY, TEXAS.

DATE: 04-19-2022
DRAWN BY: CH
CHECKED BY: RS
FIELD CREW: DN
PROJECT NO: 2020030639
SCALE: 1"=2000'
SHEET: 1
REVISION: 0



550 Bailey Ave., 205 - Fort Worth, TX 76107
Ph: 817.349.9800 - Fax: 979.732.5271
TBPE Firm 17957 | TBPLS Firm 10193887
www.fscinc.net

© COPYRIGHT 2016 - ALL RIGHTS RESERVED