	<b>WELL NAME:</b> UL Loveland 1920-17 7H		<b>FIELD:</b> Two Georges		<b>Well #:</b> 4247500160		<b>Permit #:</b> 840913	
	<b>STATE:</b> Texas		<b>COUNTY:</b> Ward		<b>SRF LOC:</b> SEC:18 BLK:17 SRV:UL, 648 FSL, 2076 FSL		<b>BHL:</b> SEC:20 BLK:17 SRV:UL, 75 FSL, 940 FWL	
	<b>API NO:</b> 42-475-37576		<b>SPUD DATE:</b> 7/10/2018		<b>FORMATION:</b> 3rd Bone Spring			
	<b>PBTD:</b> 21,515' <b>Burst Sub</b>		<b>TD DATE:</b> 10/7/2018		<b>CMPL DATE:</b> 11/16/2018		<b>ELEVATION:</b> 2645'; RKB 25'	
	<b>TD:</b> 21,685'		<b>TVD:</b> 10,801'					

	PIPE RECORD							HOLE DATA		CEMENT DATA			
	OD	GRADE	THD	WEIGHT (ppf)	TOP	BTM	# JTS	BIT SIZE	DEPTH	SX	YIELD (cu ft/sk)	TOC	Method
Surf Csg	13-3/8"	J-55	STC	54.50#	0'	1220'	29	17.500"	1235'	1371	1.76	0'	Circ to Surf
Intermediate Csg	10-3/4"	J-55	BTC	45.50#	0'	5086'	120	12.250"	5101'	1130	2.20	0'	Circ to Surf
Intermediate Csg	7-5/8"	HCL80	BTC/USF	29.70#	0'	10256'	114/119	9.875"	10275'	490/520	2.56/2.28	643'	2 stg; Circ DV
Production Csg	5-1/2"	P110	GeoConn	23.00#	0'	21675'	485	6.750"	21685'	1390	1.23	8155'	CBL

	OD	GRADE	THREAD	WEIGHT	PKR @	TYPE	BTM	Perfs/Top of Sleeve Depth:	See Below	LOGS:
Tbg	2.875"	L80	8RD	6.50#	10413	AS1X	10427			

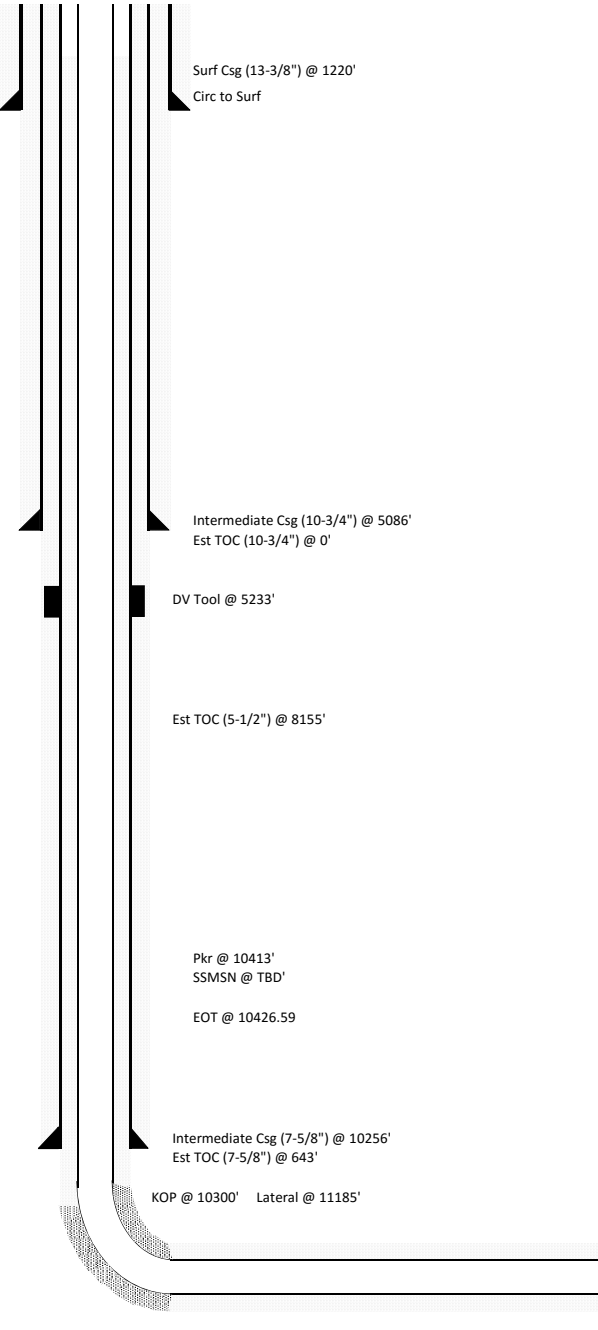
**HISTORY:**

Perforations:					
Formation	Top Perf	Bottom Perf	Net Feet	JSPF	Holes
3rd Bone Sprin	10945	21490	10545		

TUBING/BHA Detail as of:	3/15/2019	ID (in)	OD (in)	Jts	Length (ft)	Depth (ft)	PUMP/ROD Detail as of:	3/15/2019	Rods	Length (ft)
KB Correction					25.00	25.00	KB Correction			
Tubing Hanger			7.625		0.5	25.50				
1 joint 2-7/8" tubing			2.875	1	32.54	58.04				
Tubing Sub			2.875	1	16.00	74.04				
2-7/8" Production tubing			2.875	319	10265.60	10339.64				
DH Gauge			2.875		6.10	10345.74				
1 joint 2-7/8" tubing			2.875	1	32.55	10378.29				
X-Nipple			2.875		1.00	10379.29				
1 joint 2-7/8" tubing			2.875	1	32.55	10411.84				
On/Off Tool			4.500		1.50	10413.34				
AS1-X Production Packer			4.000		7.00	10420.34				
Tubing Sub			2.875	1	4.00	10424.34				
XN-Nipple			2.875		1.00	10425.34				
Disc Sub/Muleshoe			2.875		1.25	10426.59				
<b>EOT (KB)</b>						<b>10426.59</b>			<b>TOTAL</b>	<b>0</b>

Updated by: fhartmann  
3/15/2019

SHOE TRACT				
	Length	ID (in)	Top Depth (ft)	Btm Depth (ft)
Reaming Shoe	1.85	N/A	21673.15	21675.00
Joint 1	44.17	4.670	21628.98	21673.15
Joint 2	44.17	4.670	21584.81	21628.98
Float Collar	1.35	N/A	21583.46	21584.81
Joint 3	44.16	4.670	21539.30	21583.46
Burst Sub 1	1.10	4.625	21538.20	21539.30
Pup Joint	22.06	4.670	21516.14	21538.20
Burst Sub 2	1.10	4.625	21515.04	21516.14
Joint 4	44.14	4.670	21470.90	21515.04



Circ to Surf  
Calc  
Est  
By CBL  
2 stg; Circ DV