

## RAILROAD COMMISSION OF TEXAS

### Oil and Gas Division

Tracking No.: 74656  
Status: Submitted

This facsimile W-2 was generated electronically  
from data submitted to the RRC.

API No. 42- 475-36255

7. RRC District No.  
08

8. RRC Lease No.

## Oil Well Potential Test, Completion or Recompletion Report, and Log

1. FIELD NAME (as per RRC Records or Wildcat) <b>TWO GEORGES (BONE SPRING)</b>		2. LEASE NAME <b>UNIVERSITY 17-18</b>		9. Well No. <b>2</b>	
3. OPERATOR'S NAME (Exactly as shown on Form P-5, Organization Report) <b>ENERGEN RESOURCES CORPORATION</b>			RRC Operator No. <b>252002</b>		10. County of well site <b>WARD</b>
4. ADDRESS <b>3300 NORTH A ST BLDG 4 STE 100 MIDLAND, TX 79705-0000</b>					
5. If Operator has changed within last 60 days, name former operator					
6a. Location (Section, Block, and Survey) <b>17 , 18 , UL</b>			6b. Distance and direction to nearest town in this county. <b>6.3 MILES W DIRECTION FROM PYOTE</b>		
12. If workover or reclass, give former field (with reservoir) & Gas ID or oil lease no. <b>FIELD &amp; RESERVOIR</b>					
N/A			GAS ID or OIL LEASE #		Oil-O Gas-G
13. Type of electric or other log run <b>Gamma Ray (MWD)</b>			14. Completion or recompletion date <b>01/11/2013</b>		

**11. Purpose of filing**

Initial Potential

Retest

Reclass

Well record only (Explain in remarks)

### SECTION I- POTENTIAL TEST DATA IMPORTANT: Test should be for 24 hours unless otherwise specified infield rules.

15. Date of test <b>01/22/2013</b>	16. No. of hours tested <b>24</b>	17. Production method (Flowing, Gas Lift, Jetting, Pumping- Size & Type of pump) <b>Flowing</b>			18. Choke size <b>22/64</b>
19. Production during Test Period	Oil - BBLS <b>420.0</b>	Gas - MCF <b>2100</b>	Water - BBLS <b>1306</b>	Gas - Oil Ratio <b>5000</b>	Flowing Tubing Pressure <b>2800.0</b> PSI
20. Calculated 24-Hour Rate	Oil - BBLS <b>420.0</b>	Gas - MCF <b>2100</b>	Water - BBLS <b>1306</b>	Oil Gravity-API-60° <b>46.4</b>	Casing Pressure <b>0.0</b> PSI
21. Was swab used during this test? Yes <input type="checkbox"/> No <input checked="" type="checkbox"/>		22. Oil produced prior to test (New & Reworked wells) <b>434.0</b>			23. Injection Gas-Oil Ratio

REMARKS: N/A

**INSTRUCTIONS:** File an original and one copy of the completed Form W-2 in the appropriate RRC District Office within 30 days after completing a well and within 10 days after a potential test. If an operator does not properly report the results of a potential test within the 10-day period, the effective date of the allowable assigned to the well will not extend back more than 10 days before the W-2 was received in the District Office. (Statewide Rules 16 and 51) To report a completion or recompletion, fill in both sides of this form. To report a retest, fill in only the front side.

#### WELL TESTERS CERTIFICATION

I declare under penalties prescribed in Sec. 91.143, Texas Natural Resources Code, that I conducted or supervised this test by observation of (a) meter readings or (b) the top and bottom gauges of each tank into which production was run during the test. I further certify that the potential test data shown above is true, correct, and complete, to the best of my knowledge.

Signature: Well Tester

Name of Company

RRC Representative

#### OPERATOR'S CERTIFICATION

I declare under penalties prescribed in Sec. 91.143, Texas Natural Resources Code, that I am authorized to make this report, that this report was prepared by me or under my supervision and direction, and that data and facts stated therein are true, correct and complete, to the best of my knowledge.

**ENERGEN RESOURCES CORPORATION**

Type or printed name of operator's representative

(432) 684-3692                      05/21/2013

Telephone: Area Code      Number      Month      Day      Year

Regulatory Analyst

Title of Person

Delia Skinner

Signature

SECTION III DATA ON WELL COMPLETION AND LOG (Not Required on Retest)

24. Type of Completion  
 New Well  Deepening  Plug Back  Other

25. Permit to Drill, Plug Back or Deepen DATE 10/05/2012 PERMIT NO. 748973  
 Rule 37 Exception CASE NO.  
 Water Injection Permit PERMIT NO.  
 Salt Water Disposal Permit PERMIT NO.  
 Other PERMIT NO.

26. Notice of Intention to Drill this well was filed in Name of  
**ENERGEN RESOURCES CORPORATION**

27. Number of producing wells on this lease in this field (reservoir) including this well: **2**  
 28. Total number of acres in this lease: **320.4**

29. Date Plug Back, Deepening, Workover or Drilling Operations:  
 Commenced: **11/23/2012** Completed: **12/22/2012**  
 30. Distance to nearest well, Same Lease & Reservoir: **1506.0**

31. Location of well, relative to nearest lease boundaries: **400.0** Feet From **SW** Line and **567.0** Feet from **NW** Line of the **UNIVERSITY 17-18** Lease

32. Elevation (DF, RKB, RT, GR ETC.): **2660** **GR**  
 33. Was directional survey made other than inclination (Form W-12)?  Yes  No

34. Top of Pay: **11019 MD:11661**  
 35. Total Depth: **11086 MD:15125**  
 36. P. B. Depth: **11086 MD:15125**  
 37. Surface Casing Determined by: Field Rules   
 Recommendation of T.D.W.R. Railroad Commission (Special)   
 Dt. of Letter: **10/01/2012**  
 Dt. of Letter: **10/05/2012**

38. Is well multiple completion?  Yes  No

39. If multiple completion, list all reservoir names (completions in this well) and Oil Lease or Gas ID No.  
 FIELD & RESERVOIR: **N/A**  
 GAS ID or OIL LEASE #  
 Oil-G Gas-G  
 Well #

40. Intervals Drilled by: Rotary Tools  Cable Tools  
 41. Name of Drilling Contractor: **NABORS F05**  
 42. Is Cementing Affidavit Attached?  Yes  No

43. CASING RECORD (Report All Strings Set in Well)

CASING SIZE	WT #/FT.	DEPTH SET	MULTI-STAGE TOOL DEPTH	TYPE & AMOUNT CEMENT (sacks)	HOLE SIZE	TOP OF CEMENT	SURRY VOL. cu. ft.
9 5/8	40.0	4884		C 1400	12 1/4	2024	2715.0
9 5/8	40.0	4884	2024	C 1650	12 1/4	SURFACE	2851.0
7	29.0	11201		TXI 1200	8 3/4	5800	2736.0
7	29.0	11201	4735	TXI 451	8 3/4	SURFACE	966.0

44. LINER RECORD

Size	Top	Bottom	Sacks Cement	Screen
4 1/2	10601	15125		

45. TUBING RECORD

Size	Depth Set	Packer Set	From	To
2 7/8	10528	10500	L1 11880	14954
			From	To
			From	To
			From	To

46. Producing Interval (this completion) Indicate depth of perforation or open hole

47. ACID, SHOT, FRACTURE, CEMENT SQUEEZE, ETC.

Depth Interval	Amount and Kind of Material Used
11880.0 - 14954.0	FRAC 25,571 BBLS FLUID, 2,641,480 LBS SAND.

48. FORMATION RECORD (LIST DEPTHS OF PRINCIPAL GEOLOGICAL MARKERS AND FORMATION TOPS)

Formations	Depth	Formations	Depth
3RD BONE SPRING	11019.0 MD: 11661.0	BELL CANYON	5060.0 MD: 5028.0
HOBAN	11132.0 MD: 11367.0		
A SAND	11188.0 MD: 11657.0		

REMARKS: N/A \* KOP @ 10619ft.

Cementer: Fill in shaded areas.  
Operator: Fill in other items

RAILROAD COMMISSION OF TEXAS  
Oil and Gas Division

1. Operator's Name (As shown on Form P-5, Organization Report) <b>Energen Resources Corporation</b>	2. RRC Operator No. <b>252002</b>	3. RRC District No. <b>8</b>	4. County of Well Site <b>Ward</b>
5. I Field <b>Two Georges (Bone Spring)</b>	6. API No. <b>42-475-36255</b>	7. Drilling Permit No. <b>748973</b>	
8. Lease Name <b>University 17-18</b>	9. Rule 37 Case No.	10. Oil Lease/Gas ID No.	11. Well No. <b>2(H)</b>

CASING CEMENTING DATA:	SURFACE CASING	INTER-MEDIATE CASING	PRODUCTION CASING		MULTI-STAGE CEMENTING PROCESS	
			Single String	Multiple Parallel Strings	Tool	Shoe
12. Cementing Date					11/27/2012	11/27/2012
13. ●Drilling hole size					12'1/4	12'1/4
●Est. % wash or hole enlargement						
14. Size of casing (in. O.D.)					9 5/8	9 5/8
15. Top of liner (ft.)						
16. Setting depth (ft.)					2,024	4,884
17. Number of centralizers used					36	36
18. Hrs. waiting on cement before drill-out					24	24
1st Shurry	19. API cement used: No. of sacks ▶				1450	1100
	Class ▶				C	35/65POZ C
	Additives ▶				See Remark	See Remarks
2nd Shurry	No. of sacks ▶				200	300
	Class ▶				C	C
	Additives ▶				See Remark	See Remarks
3rd Shurry	No. of sacks ▶					
	Class ▶					
	Additives ▶					
1st	20. Shurry pumped: Volume (cu. ft.) ▶				2581	2310
	Height (ft.) ▶				1570	1682
2nd	Volume (cu. ft.) ▶				270	405
	Height (ft.) ▶				430	583
3rd	Volume (cu. ft.) ▶					
	Height (ft.) ▶					
Total	Volume (cu. ft.) ▶				2851	2715
	Height (ft.) ▶				2000	2265
21. Was cement circulated to ground surface (or bottom of cellar) outside casing?					YES	YES

22. Remarks  
**LEAD: 5%D044+7%D020+3ppsD042+0.125 ppsD130+0.2%D046+0.3%D013**  
**TAIL: 0.25%D201 + 0.2% D046 + 3pps D042 + 0.125pps D130**  
**2nd LEAD: 5%D044+3%D020+0.2%D201 + 0.2% D046 + 0.125pps D130**

CEMENTING TO PLUG AND ABANDON	PLUG #1	PLUG #2	PLUG #3	PLUG #4	PLUG #5	PLUG #6	PLUG #7	PLUG #8
23. Cementing date								
24. Size of hole or pipe plugged (in.)								
25. Depth to bottom of tubing or drill pipe (ft.)								
26. Sacks of cement used (each plug)								
27. Slurry volume pumped (cu. ft.)								
28. Calculated top of plug (ft.)								
29. Measured top of plug, if tagged (ft.)								
30. Slurry wt. (lb/gal)								
31. Type cement								

**CEMENTER'S CERTIFICATE:** I declare under penalties prescribed in Sec. 91.143, Texas Natural Resources Code, that I am authorized to make this certification, that the cementing of casing and/or the placing of cement plugs in this well as shown in the report was performed by me or under my supervision, and that the cementing data and facts presented on both sides of this form are true, correct, and complete, to the best of my knowledge. This certification covers cementing data only.

Stanley Adams Schlumberger Stanley Adams  
 Name and title of cementer's representative Cementing Company Signature  
1105 W Bender Hobbs, NM 88240 575-393-6186 11/27/2012  
 Address City, State, Zip Code Tel.: Area Code Number Date: mo. day yr.

**OPERATOR'S CERTIFICATE:** I declare under penalties prescribed in Sec. 91.143, Texas Natural Resources Code, that I am authorized to make this certification, that I have knowledge of the well data and information presented in this report, and that data and facts presented on both sides of this form are true, correct, and complete, to the best of my knowledge. This certification covers all well data.

Delia Skinner Regulatory Analyst Delia Skinner  
 Typed or printed name of operator's representative Title Signature  
3300 N. 'A' St. Bldg. 4 Ste. 100 Midland TX 79705 432-684-3692 5/20/13  
 Address City, State, Zip Code Tel.: Area Code Number Date: mo. day yr.

### Instructions to Form W-15, Cementing Report

**IMPORTANT:** Operators and cementing companies must comply with the requirements of the Commission's State Rules 8 (Water Protection), 13 (Casing, Cementing, Drilling, and Completion), and 14 (Well Plugging). For offshore operations, see the requirements of Rule 13 (e).

- A. What to file. An operator should file an original and one copy of the completed Form W-15 for each cementing company used on a well. The cementing of different casing strings on a well by one cementing company may be reported on one form. Form W-15 should be filed with the following:
  - An initial oil or gas completion report, Form W-2 or G-1, as required by Statewide or special field rules;
  - Form W-4, Application for Multiple Completion, if the well is a multiple parallel casing completion; and
  - Form W-3, Plugging Record, unless the W-3 is signed by the cementing company representative. When reporting dry holes, operators must complete Form W-15, in addition to Form W-3, to show any casing cemented in the hole.
- B. Where to file. The appropriate Commission District Office for the county in which the well is located.
- C. Surface casing. An operator must set and cement sufficient surface casing to protect all usable-quality water strata, as defined by the Texas Department of Water Resources, Austin. Before drilling a well in any field or area in which no field rules are in effect or in which surface casing requirements are not specified in the applicable rules, an operator must obtain a letter from the Department of Water Resources stating the protection depth. Surface casing should not be set deeper than 200 feet below the specified depth without prior approval from the Commission.
- D. Centralizers. Surface casing must be centralized at the shoe, above and below a stage collar or diverting tool, if run, and through usable-quality water zones. In nondeviated holes, a centralizer must be placed every fourth joint from the cement shoe to the ground surface or to the bottom of the cellar. All centralizers must meet API specifications.
- E. Exceptions and alternative casing programs. The District Director may grant an exception to the requirements of Statewide Rule 13. In a written application, an operator must state the reason for the requested exception and outline an alternate program for casing and cementing through the protection depth for strata containing usable-quality water. The District Director may approve, modify, or reject a proposed program. An operator must obtain approval of any exception before beginning casing and cementing operations.
- F. Intermediate and production casing. For specific technical requirements, operators should consult Statewide Rule 13 (b) (3) and (4).
- G. Plugging and abandoning. Cement plugs must be placed in the wellbore as required by Statewide Rule 14. The District Director may require additional cement plugs. For onshore or inland wells, a 10-foot cement plug must be placed in the top of the well, and the casing must be cut off three feet below the ground surface. All cement plugs, except the top plug, must have sufficient slurry volume to fill 100 feet of hole, plus ten percent for each 1,000 feet of depth from the ground surface to the bottom of the plug.

To plug and abandon a well, operators must use only cementers approved by the Director of Field Operations. Cementing companies, service companies, or operators can qualify as approved cementers by demonstrating that they are able to mix and pump cement in compliance with Commission rules and regulations.

Cementer: Fill in shaded areas.  
Operator: Fill in other items

**Form W-15**  
Cementing Report  
Rev. 4/1/83  
483-045

**RAILROAD COMMISSION OF TEXAS**  
Oil and Gas Division

1. Operator's Name (As shown on Form P-5, Organization Report) <b>Energen Resources Corporation</b>	2. RRC Operator No. <b>252002</b>	3. RRC District No. <b>8</b>	4. County of Well Site <b>WARD</b>
5. Field <b>Two George (Bone Spring)</b>	6. API No. <b>475-36255</b>	7. Drilling Permit No. <b>748973</b>	
8. Lease Name <b>University 17-18</b>	9. Rule 37 Case No.	10. Oil Lease/Gas ID No.	11. Well No. <b>2</b>

CASING CEMENTING DATA:	SURFACE CASING	INTER-MEDIATE CASING	PRODUCTION CASING		MULTI-STAGE CEMENTING PROCESS	
			Single String	Multiple Parallel Strings	Tool	Shoe
12. Cementing Date		<b>12/7/2012</b>			<b>12/9/2012</b>	<b>12/9/2012</b>
13. ●Drilling hole size					<b>8 3/4</b>	<b>8 3/4</b>
●Est. % wash or hole enlargement						
14. Size of casing (in. O.D.)					<b>7</b>	<b>7</b>
15. Top of liner (ft.)						
16. Setting depth (ft.)					<b>4735</b>	<b>11,201</b>
17. Number of centralizers used					<b>37</b>	<b>37</b>
18. Hrs. waiting on cement before drill-out						
1st Slurry	19. API cement used: No. of sacks ▶				<b>250</b>	<b>800</b>
	Class ▶				<b>TXI</b>	<b>TXI</b>
	Additives ▶				<b>See Remark</b>	<b>See Remark</b>
2nd Slurry	No. of sacks ▶				<b>201</b>	<b>400</b>
	Class ▶				<b>TXI</b>	<b>TXI</b>
	Additives ▶				<b>See Remark</b>	<b>See Remark</b>
3rd Slurry	No. of sacks ▶					
	Class ▶					
	Additives ▶					
1st	20. Slurry pumped: Volume (cu. ft.) ▶				<b>695</b>	<b>2192</b>
	Height (ft.) ▶				<b>2995</b>	<b>5072</b>
2nd	Volume (cu. ft.) ▶				<b>271</b>	<b>544</b>
	Height (ft.) ▶				<b>1738</b>	<b>1403</b>
3rd	Volume (cu. ft.) ▶					
	Height (ft.) ▶					
Total	Volume (cu. ft.) ▶				<b>966</b>	<b>2736</b>
	Height (ft.) ▶				<b>4733</b>	<b>6475</b>
21. Was cement circulated to ground surface (or bottom of cellar) outside casing?					<b>Yes</b>	<b>No</b>

22. **Remarks**

**Lead TXI+8%D020+3%D154+.7%D013+.4%D207+.4%D065+.2%D046+5ppsD042+.125ppsD130+.15%D208**

**Tail TXI + .3%D201+3ppsD042+.2%D046+.125ppsD130+.2%D065+.4%D207**

**Lead TXI+ 10%D020+3%D154+.4%D167+.2%D046+5ppsD042+.125ppsD130**

**FTL# C88G-00061 Tail TXI + .1%D201+3ppsD042+.2%D046+.125ppsD130+.1%D065+.4%D207**

*TOC @ 5800ft Per CBL*

CEMENTING TO PLUG AND ABANDON	PLUG # 1	PLUG # 2	PLUG # 3	PLUG # 4	PLUG # 5	PLUG # 6	PLUG # 7	PLUG # 8
23. Cementing date								
24. Size of hole or pipe plugged (in.)								
25. Depth to bottom of tubing or drill pipe (ft.)								
26. Sacks of cement used (each plug)								
27. Slurry volume pumped (cu. ft.)								
28. Calculated top of plug (ft.)								
29. Measured top of plug, if tagged (ft.)								
30. Slurry wt. (lbs/gal)								
31. Type cement								

**CEMENTER'S CERTIFICATE:** I declare under penalties prescribed in Sec. 91.143, Texas Natural Resources Code, that I am authorized to make this certification, that the cementing of casing and/or the placing of cement plugs in this well as shown in the report was performed by me or under my supervision, and that the cementing data and facts presented on both sides of this form are true, correct, and complete, to the best of my knowledge. This certification covers cementing data only.

Lorena Arriaga Schlumberger  
 Name and title of cementer's representative Cementing Company Signature

1105 W Bender Hobbs, NM 88240 575-393-6186 12/9/2012  
 Address City, State, Zip Code Tel.: Area Code Number Date: mo day yr.

**OPERATOR'S CERTIFICATE:** I declare under penalties prescribed in Sec. 91.143, Texas Natural Resources Code, that I am authorized to make this certification, that I have knowledge of the well data and information presented in this report, and that data and facts presented on both sides of this form are true, correct, and complete, to the best of my knowledge. This certification covers all well data.

Delia Skinner Regulatory Analyst Delia Skinner  
 Typed or printed name of operator's representative Title Signature

3300 N. 'A' St. Bldg. 4, Ste. 100 Midland, TX 79705 432-684-3692 5/20/13  
 Address City, State, Zip Code Tel.: Area Code Number Date: mo day yr.

### Instructions to Form W-15, Cementing Report

**IMPORTANT:** Operators and cementing companies must comply with the requirements of the Commission's State Rules 8 (Water Protection), 13 (Casing, Cementing, Drilling, and Completion), and 14 (Well Plugging). For offshore operations, see the requirements of Rule 13 (c).

- A. What to file.** An operator should file an original and one copy of the completed Form W-15 for each cementing company used on a well. The cementing of different casing strings on a well by one cementing company may be reported on one form. Form W-15 should be filed with the following:
- An initial oil or gas completion report, Form W-2 or G-1, as required by Statewide or special field rules;
  - Form W-4, Application for Multiple Completion, if the well is a multiple parallel casing completion; and
  - Form W-3, Plugging Record, unless the W-3 is signed by the cementing company representative. When reporting dry holes, operators must complete Form W-15, in addition to Form W-3, to show any casing cemented in the hole.
- B. Where to file.** The appropriate Commission District Office for the county in which the well is located.
- C. Surface casing.** An operator must set and cement sufficient surface casing to protect all usable-quality water strata, as defined by the Texas Department of Water Resources, Austin. Before drilling a well in any field or area in which no field rules are in effect or in which surface casing requirements are not specified in the applicable rules, an operator must obtain a letter from the Department of Water Resources stating the protection depth. Surface casing should not be set deeper than 200 feet below the specified depth without prior approval from the Commission.
- D. Centralizers.** Surface casing must be centralized at the shoe, above and below a stage collar or diverting tool, if run, and through usable-quality water zones. In nondeviated holes, a centralizer must be placed every fourth joint from the cement shoe to the ground surface or to the bottom of the cellar. All centralizers must meet API specifications.
- E. Exceptions and alternative casing programs.** The District Director may grant an exception to the requirements of Statewide Rule 13. In a written application, an operator must state the reason for the requested exception and outline an alternate program for casing and cementing through the protection depth for strata containing usable-quality water. The District Director may approve, modify, or reject a proposed program. An operator must obtain approval of any exception before beginning casing and cementing operations.
- F. Intermediate and production casing.** For specific technical requirements, operators should consult Statewide Rule 13 (b) (3) and (4).
- G. Plugging and abandoning.** Cement plugs must be placed in the wellbore as required by Statewide Rule 14. The District Director may require additional cement plugs. For onshore or inland wells, a 10-foot cement plug must be placed in the top of the well, and the casing must be cut off three feet below the ground surface. All cement plugs, except the top plug, must have sufficient slurry volume to fill 100 feet of hole, plus ten percent for each 1,000 feet of depth from the ground surface to the bottom of the plug.

To plug and abandon a well, operators must use only cementers approved by the Director of Field Operations. Cementing companies, service companies, or operators can qualify as approved cementers by demonstrating that they are able to mix and pump cement in compliance with Commission rules and regulations.

**RAILROAD COMMISSION OF TEXAS  
OIL AND GAS DIVISION**

Form W-12  
(1-1-71)  
FOD1296

<b>INCLINATION REPORT</b> (One Copy Must Be Filed With Each Completion Report)		6. RRC District <b>8</b>
		7. RRC Lease Number. (Oil completions only)
1. FIELD NAME (as per RRC Records or Wildcat) <b>Two Georges (Bone Spring)</b>	2. LEASE NAME <b>UNIVERSITY 17-18</b>	8. Well Number <b>2</b>
3. OPERATOR <b>ENERGEN RESOURCES CORPORATION</b>		9. RRC Identification Number (Gas completions only)
4. ADDRESS <b>3300 NORTH "A" STREET. BLDG. 4 SUITE 100 MIDLAND, TX 79705</b>		10. County <b>WARD</b>
5. LOCATION (Section, Block, and Survey) <b>Sec. 17 B15.18 UL</b>		



**RECORD OF INCLINATION**

*11. Measured Depth (feet)	12. Course Length (Hundreds of feet)	*13. Angle of Inclination (Degrees)	14. Displacement per Hundred Feet (Sine of Angle x100)	15. Course Displacement (feet)	16. Accumulative Displacement (feet)
411	411	0.50	0.87	3.57	3.57
850	439	0.30	0.52	2.28	5.85
1227	377	0.30	0.52	1.96	7.81
1510	283	0.50	0.87	2.46	10.27
1983	473	0.70	1.22	5.77	16.04
2358	375	3.00	5.24	19.65	35.69
2831	473	1.60	2.79	13.19	48.88
3018	187	0.70	1.22	2.28	51.16
3563	545	1.70	2.97	16.18	67.34
3753	190	1.20	2.09	3.97	71.31
3869	116	1.40	2.44	2.83	74.14
4242	373	1.00	1.75	6.52	80.66
4881	639	1.20	2.09	13.35	94.01
5009	128	1.20	2.09	2.67	96.68
5485	476	0.50	0.87	4.14	100.82

If additional space is needed, use the reverse side of this form.

17. Is any information shown on the reverse side of this form?  yes  no
18. Accumulative total displacement of well bore at total depth of 10421 feet = 166.16 feet.
- \*19. Inclination measurements were made in -  Tubing  Casing  Open hole  Drill Pipe
20. Distance from surface location of well to the nearest lease line ..... 200 feet.
21. Minimum distance to lease line as prescribed by field rules ..... 467 feet.
22. Was the subject well at any time intentionally deviated from the vertical in any manner whatsoever? NO

(If the answer to the above question is "yes," attach written explanation of the circumstances.)

<p><b>INCLINATION DATA CERTIFICATION</b></p> <p>I declare under penalties prescribed in Sec. 91.143, Texas Natural Resources Code, that I am authorized to make this certification, that I have personal knowledge of the inclination data and facts placed on both sides of this form and that such data and facts are true, correct, and complete to the best of my knowledge. This certification covers all data as indicated by asterisks (*) by the item numbers on this form.</p> <p> Signature of Authorized Representative <b>MATT SPEER - OPERATING ENGINEER</b> Name of Person and Title (type or print) <b>NABORS DRILLING USA, LP</b> Name of Company Telephone: <b>281-874-0035</b> Area Code</p>	<p><b>OPERATOR CERTIFICATION</b></p> <p>I declare under penalties prescribed in Sec. 91.143, Texas Natural Resources Code, that I am authorized to make this certification, that I have personal knowledge of all information presented in this report, and that all data presented on both sides of this form are true, correct, and complete to the best of my knowledge. This certification covers all data and information presented herein except inclination data as indicated by asterisks (*) by the item numbers on this form.</p> <p> Signature of Authorized Representative <b>Delia Skinner Regulatory Analyst</b> Name of Person and Title (type or print) <b>Energen Resources Corporation</b> Operator Telephone: <b>432-684-3692</b> Area Code</p>
---	--

Railroad Commission Use Only:

Approved By: \_\_\_\_\_ Title: \_\_\_\_\_ Date: \_\_\_\_\_

\* Designates items certified by company that conducted the inclination surveys.

**RECORD OF INCLINATION (Continued from reverse side)**

*11. Measured Depth (feet)	12. Course Length (Hundreds of feet)	*13. Angle of Inclination (Degrees)	14. Displacement per Hundred Feet (Sine of Angle x100)	15. Course Displacement (feet)	16. Accumulative Displacement (feet)
5863	378	0.60	1.05	3.96	104.78
5958	95	0.50	0.87	0.82	105.60
6054	96	0.50	0.87	0.83	106.43
6149	95	0.50	0.87	0.82	107.25
6340	191	0.30	0.52	0.99	108.24
6435	95	0.50	0.87	0.82	109.06
6530	95	0.30	0.52	0.49	109.55
6624	94	0.30	0.52	0.48	110.03
6719	95	0.30	0.52	0.49	110.52
6815	96	0.30	0.52	0.49	111.01
7005	190	0.30	0.52	0.98	111.99
7100	95	0.60	1.05	0.99	112.98
7195	95	0.90	1.57	1.49	114.47
7290	95	0.80	1.40	1.33	115.80
7385	95	0.50	0.87	0.82	116.62
7760	375	0.30	0.52	1.95	118.57
8146	386	0.50	0.87	3.35	121.92
8527	381	0.70	1.22	4.64	126.56
8622	95	0.60	1.05	0.99	127.55
8716	94	0.70	1.22	1.14	128.69
8812	96	1.30	2.27	2.17	130.86
9046	234	1.20	2.09	4.89	135.75
9100	54	0.90	1.57	0.84	136.59
9187	87	1.60	2.79	2.42	139.01
9195	8	1.60	2.79	0.22	139.23
9378	183	0.90	1.57	2.87	142.10
9566	188	1.20	2.09	3.92	146.02
9661	95	0.60	1.05	0.99	147.01
9948	287	1.30	2.27	6.51	153.52
10139	191	1.40	2.44	4.66	158.18
10282	143	1.80	3.14	4.49	162.67
10377	95	1.60	2.79	2.65	165.32
10421	44	1.10	1.92	0.84	166.16

If additional space is needed, attach separate sheet and check here.

REMARKS: \_\_\_\_\_

**- INSTRUCTIONS -**

An inclination survey made by persons or concerns approved by the Commission shall be filed on a form prescribed by the Commission for each well drilled or deepened with rotary tools or when, as a result of any operation, the course of the well is changed. No inclination survey is required on wells that are drilled and completed as dry holes that are plugged and abandoned. (Inclination surveys are required on re-entry of abandoned wells.) Inclination surveys must be made in accordance with the provisions of Statewide Rule 11.

This report shall be filed in the District Office of the Commission for the district in which the well is drilled, by attaching one copy to each appropriate completion for the well. (except Plugging Report)

The Commission may require the submittal of the original charts, graphs, or discs, resulting from the surveys.

Tracking No.: 74656

*This facsimile L-1 was generated electronically from data submitted to the RRC.*

**Instructions**

**When to File Form L-1:**

- with Forms G-1, W-2, and GT-1 for new and deepened gas, oil, and geothermal wells
- with Form W-3 for plugged dry holes
- when sending in a log which was held under a request for confidentiality and the period for confidentiality has not yet expired.

**When is Form L-1 NOT required:**

- with Forms W-2, G-1, and GT-1 filed for injection wells, disposal wells, water supply wells, service wells, re-test wells, re-classifications, and plugbacks of oil, gas or geothermal wells
- with Form W-3 for plugging of other than a dry hole

**Where to File Form L-1:**

- with the appropriate Commission district office

**Filling out Form L-1:**

- Section I and the signature section must be filled out for all wells
- complete only the appropriate part of Section II

**Type of log required:**

- any wireline survey run for the purpose of obtaining lithology, porosity, or resistivity information
- no more than one such log is required but it must be of the subject well
- if such log is NOT run on the subject well, do NOT substitute any other type of log; just select Section II, Part A below

**SECTION I. IDENTIFICATION**

Operator Name: <b>ENERGEN RESOURCES CORPORATION</b>	District No. <b>08</b>	Completion Date: <b>01/11/2013</b>
Field Name <b>TWO GEORGES (BONE SPRING)</b>	Drilling Permit No. <b>748973</b>	
Lease Name <b>UNIVERSITY 17-18</b>	Lease/ID No.	Well No. <b>2</b>
County <b>WARD</b>	API No. <b>42- 475-36255</b>	

**SECTION II. LOG STATUS (Complete either A or B)**

A. BASIC ELECTRIC LOG NOT RUN

B. BASIC ELECTRIC LOG RUN. (Select one)

- 1. Confidentiality is requested and a copy of the header for each log that has been run on the well is attached.
- 2. Confidentiality already granted on basic electric log covering this interval (applicable to deepened wells only).
- 3. Basic electric log covering this interval already on file with Commission (applicable to deepened wells only).
- 4. Log attached to (select one):
  - (a) Form L-1 (this form). If the company/lease name on log is different from that shown in Section I, please enter name on log here: \_\_\_\_\_  
Check here if attached log is being submitted after being held confidential.
  - (b) Form P-7, Application for Discovery Allowable and New Field Designation.
  - (c) Form W-4, Application for Multiple Completion:  
Lease or ID No(s). \_\_\_\_\_  
Well No(s). \_\_\_\_\_

_____ Signature <b>ENERGEN RESOURCES CORPORATION</b> Name (print)	_____ Regulatory Analyst Title <b>(432) 684-3692</b> <b>05/21/2013</b> Phone      Date
--	--

-FOR RAILROAD COMMISSION USE ONLY-

"Confidential"



# COMPENSATED NEUTRON GAMMA RAY / CCL LOG

Company ENERGEN RESOURCES Well UNIVERSITY 17-18 #2 Field UNIVERSITY County WARD State TEXAS	Company		ENERGEN RESOURCES				
	Well		UNIVERSITY 17-18 #2				
	Field		UNIVERSITY				
	County		WARD	State TEXAS			
Location:		API # :		Other Services			
				RCBL			
		SEC	TWP	RGE			
Permanent Datum		G.L.		Elevation			
Log Measured From		K.B. 25 FT.		K.B.			
Drilling Measured From		K.B.		D.F.			
				G.L.			
Date	12-27-12						
Run Number	ONE						
Depth Driller							
Depth Logger	7300'						
Bottom Logged Interval	7300'						
Top Log Interval	SURF.						
Open Hole Size	8 3/4"						
Type Fluid	WELL WATER						
Density / Viscosity	---						
Max. Recorded Temp.	---						
Estimated Cement Top	2020'						
Time Well Ready	2:00 PM						
Time Logger on Bottom	2:30 PM						
Equipment Number	TRK. #61						
Location	MIDLAND, TX						
Recorded By	DAN CREEK						
Witnessed By	MR. TAYLOR						
Borehole Record			Tubing Record				
Run Number	Bit	From	To	Size	Weight	From	To
Casing Record	Size		Wgt/Ft	Top		Bottom	
Surface String							
Prof. String							
Production String	7"		29#	SURF.			
Liner	4 1/2"		11.6#	10816'		4718'	
				D.V. TOOL			

1  
2  
3  
4  
5  
6  
7  
8  
9  
10  
11  
12  
13  
14  
15  
16  
17  
18  
19  
20  
21  
22  
23  
24  
25  
26  
27  
28  
29  
30  
31  
32  
33  
34  
35  
36  
37  
38  
39  
40  
41  
42  
43  
44  
45  
46  
47  
48  
49  
50  
51  
52  
53  
54  
55  
56  
57  
58  
59  
60  
61  
62  
63  
64  
65  
66  
67  
68  
69  
70  
71  
72  
73  
74  
75  
76  
77  
78  
79  
80  
81  
82  
83  
84  
85  
86  
87  
88  
89  
90  
91  
92  
93  
94  
95  
96  
97  
98  
99  
100

**APPLICATION FOR ALTERNATE SURFACE CASING PROGRAM**  
**Statewide Rule 13(b)(2)(g)**  
**RRC District 8/8A**

7/03

Operator's Name and Address:  Energen Resources Corporation 3300 N. 'A', Bldg 4, Ste 100 Midland, TX 79705	Lease: University 17-16	Well No.: 2
	Field: Two Georges (Bone Spring)	
	Drilling Permit No.: 748973	
	County: Ward	RRC District: 08
	Location: Sec. 17 Block 18	Sur. ULS Twp.
Proposed TD: 11500 TVD/15000 MD		

Distance and Direction from nearest town: 8.3 miles W from Pyote

Proposed injection or disposal well?  Yes  No NOTE: Special conditions may apply. See PROVISIONS below.

Usable-quality water strata (as determined by TCEQ "Waterboard" letter) occur to a depth of 600 ft, and from \_\_\_\_\_ ft to \_\_\_\_\_ ft, and from \_\_\_\_\_ ft to \_\_\_\_\_ ft.

**Note: Please submit copy of TCEQ "Waterboard" letter with this request. Request cannot be processed without this information.**

Distance and direction of nearest water well (within 1/4 mile): see attached sheet

Type of water well (domestic, public, irrigation, stock, etc.): \_\_\_\_\_ Depth: \_\_\_\_\_

**Proposed Casing and Cementing Program**

Note: You may attach a wellbore diagram or cementing proposal to this application.

This application is for (check applicable boxes):  Short Surface Casing  Excess Surface Casing  No Surface Casing

The proposed surface casing depth: 5200' Multi-Stage tool depth (if applicable): 2000'

Intermediate or production casing depth: \_\_\_\_\_ Multi-Stage tool depth (if applicable): \_\_\_\_\_

Centralizer number and placement: 1 centralizer on first two joints then 1 every third joint thereafter.

Does the cement across the critical zone have 72-hr compressive strength of at least 1,200 psi?  Yes  No

Does the filler cement have 24-hr compressive strength of at least 250 psi?  Yes  No

Do you plan on circulating cement to the surface on all casing strings protecting usable-quality water?  Yes  No

Reason for this request: Economics

**PROVISIONS APPLICABLE TO RULE 13 EXCEPTIONS:**

- Caution: If this well is being drilled for injection or disposal purposes, an injection or disposal well permit may be denied unless surface casing is set and cemented through all zones of usable-quality groundwater.
- Centralizers must be used through all usable-quality waters. Refer to Rule 13(b)(2)(F).
- Notify District Office 8 hours prior to setting casing.

Signature: [Signature] Print Name: Jenifer Sorley Date: 10/5/12 Phone: 432-818-1732

**IF CEMENT IS NOT CIRCULATED TO THE GROUND SURFACE AS REQUIRED BY THIS EXCEPTION, YOU MUST IMMEDIATELY CONTACT THE DISTRICT 8/8A OFFICE AT 432-884-5581, AND FOLLOW THE PROCEDURES AS SET OUT IN RULE 13(B)(2)(g)(III) OR AS RECOMMENDED BY THE DISTRICT OFFICE.**

RRC Use Only ▶

RRC District Office Action: <u>Critical Zone Slurry required across Waterboard</u>	
<input type="checkbox"/> Approved <input checked="" type="checkbox"/> Approved as Modified <input type="checkbox"/> Denied	By: <u>[Signature]</u> Date: <u>10-5-12</u>
Remarks/Modifications: <u>Fresh Water Mud system required to top of Salt Sections</u>	



**Railroad Commission of Texas**  
**Oil And Gas Division**  
**Request for Clearance of Storage Tanks**  
**Prior to Potential Test**

Form P-8

Reference No. 8064

1. Operator's Name and Address (Exactly as shown on Form P-5 Organization Report) ENERGEN RESOURCES CORPORATION 3300 NORTH A ST BLDG 4 STE 100  MIDLAND, TX 79705-0000		3. RRC District No. 08
2. RRC Operator Number: <u>252002</u>		4. County of Well Site WARD
5. API No. 42-475-36255		
6. Field Name (Wildcat or exactly as shown on RRC records) TWO GEORGES (BONE SPRING)	7. Drilling Permit No. 748973	8. Rule 37 Case No.
9. Lease Name UNIVERSITY 17-18	10. Oil lease No.	11. Well No. 2
12. Drilling completed on <u>11/19/2012</u>	13. Completion report--Form W-2 or G-1--will be filed on <u>01/31/2013</u>	
14. Oil or condensate gatherer's name and address SHELL TRADING (US) COMPANY P O BOX 4604 HOUSTON, TX 77210-4604  (713) 230-7517	15. Authorization to transport oil or condensate (mark one) <input checked="" type="checkbox"/> Form P-4 attached <input checked="" type="checkbox"/> Form P-4 Filed on <u>01/03/2013</u>	
16. This request is for <u>30000</u> barrels of <input checked="" type="checkbox"/> crude oil OR <input type="checkbox"/> condensate	17. Amount of oil/condensate in tanks <u>0</u> barrels on <u>01/03/2013</u>	
18. Storage capacity in bbls. Tank battery <u>2500</u> Test tanks <u>2500</u> Total <u>5000</u>		
19. Previous request for clearance. Amount _____ barrels granted on _____		
20. Reason for current request for clearance (explain briefly) Well will be frac'd next week. Expecting flowback of 500 BOPD.		
Jenifer Sorley	REGULATORY ANALYST	
Name of operator's representative	Title of person	
(432) 818-1732	01/03/2013	
Telephone	Date	
<b>RRC District Office Action</b>		
<b>Status: Approved</b>	<b>Barrels recommended</b> <u>30000</u>	<b>RRC Staff</b> _____ <b>Date</b> <u>01/04/2013</u>

Groundwater  
Advisory Unit

GROUNDWATER PROTECTION DETERMINATION

Date October 1, 2012

GAU File No.: SC- 7572

\*\*\*\*\* EXPEDITED APPLICATION \*\*\*\*\*

API Number 47536255

Attention: JENIFER SORLEY

RRC Lease No. 000000

SC\_252002\_47536255\_000000\_7572.pdf

ENERGEN RESOURCES CORP  
3300 N A ST  
BLDG 4 STE 100  
MIDLAND TX 79705

--Measured--

400 ft FSWL

567 ft FNWL

MRL: SECTION

Digital Map Location:	
X-coord/Long	<u>                    </u>
Y-coord/Lat	<u>                    </u>
Datum	<u>                    </u>
Zone	<u>                    </u>

P-5# 252002

County WARD

Lease & Well No. UNIVERSITY 17-18 #2&ALL

Purpose ND

Location SUR-UL, BLK-18, SEC-17, --[TD=11500], [RRC 8],

To protect usable-quality groundwater at this location, the Groundwater Advisory Unit of the Texas Railroad Commission recommends:

The interval from the land surface to a depth of 600 feet must be protected.

This recommendation is adequate for all wells drilled in this N/2 section 17.

Note: Unless stated otherwise, this recommendation is intended to apply only to the subject well and not for area-wide use. This recommendation is intended for normal drilling, production, and plugging operations only. It does not apply to saltwater disposal operation into a nonproductive zone (RRC Form W-14).

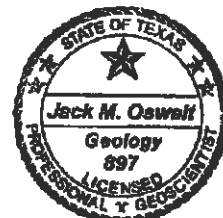
If you have any questions, please contact us at 512-463-2741, [GAU@rrc.state.tx.us](mailto:GAU@rrc.state.tx.us), or by mail.

Sincerely,

  
 Digitally signed by Jack Oswalt  
 DN: c=US, st=TEXAS, l=Austin, o=Railroad  
 Commission of Texas, cn=Jack Oswalt,  
 email=jack.oswalt@rrc.state.tx.us  
 Date: 2012.10.01 10:42:00 -05'00'

Jack M. Oswalt, P.G.

GEOLOGIST SEAL



Geologist, Groundwater Advisory Unit  
Oil & Gas Division

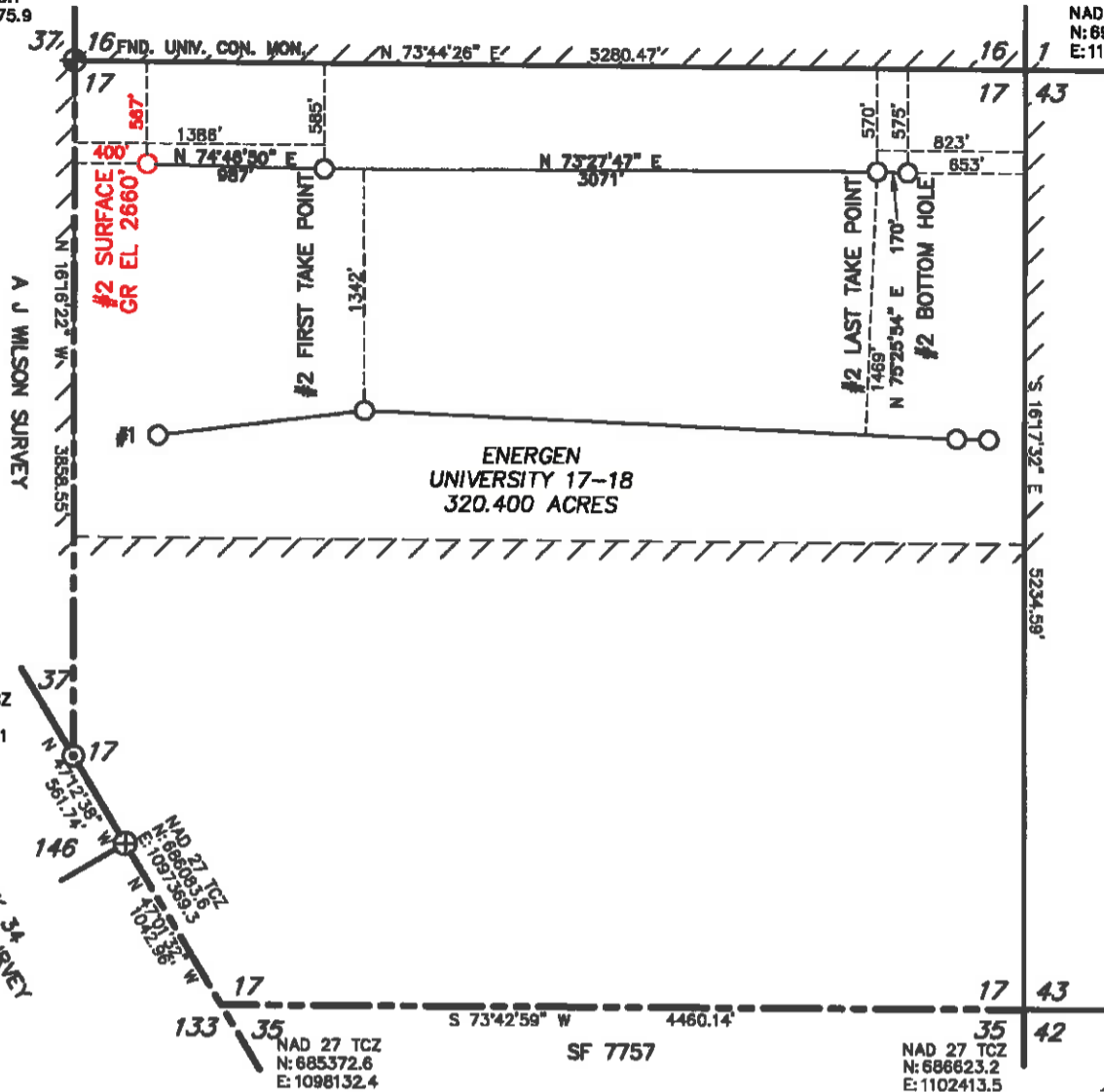
The seal appearing on this document was authorized by Jack M. Oswalt on 10/1/2012  
Note: Alteration of this electronic document will invalidate the digital signature.

A-096

**SECTION 17, BLOCK 18, UNIVERSITY LAND SURVEY**

NAD 27 TCZ  
N: 690189.1  
E: 1095875.9

NAD 27 TCZ  
N: 691647.5  
E: 1100945.1

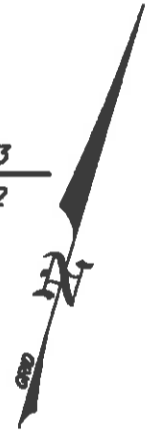


NAD 27 TCZ  
N: 688465.1  
E: 1096957.1

H & TC RR SURVEY  
BLOCK 3A

NAD 27 TCZ  
N: 685372.6  
E: 1098132.4

NAD 27 TCZ  
N: 686623.2  
E: 1102413.5



NAD 83, TEXAS CENTRAL ZONE		NAD 27, TEXAS CENTRAL ZONE	
S/L: N=10532312.2', E=1392884.4'	LAT=31.5308999 N, LONG=103.2342175 W	S/L: N=689736.8', E=1096418.8'	LAT=31.5307670 N, LONG=103.2337744 W
1/P: N=10532571.2', E=1393836.4'	LAT=31.5316799 N, LONG=103.2311846 W	1/P: N=689995.8', E=1097370.8'	LAT=31.5315470 N, LONG=103.2307417 W
L/P: N=10533445.3', E=1396780.4'	LAT=31.5342927 N, LONG=103.2218113 W	L/P: N=690869.9', E=1100314.7'	LAT=31.5341597 N, LONG=103.2213688 W
B/H: N=10533488.2', E=1396945.4'	LAT=31.5344223 N, LONG=103.2212855 W	B/H: N=690912.8', E=1100479.7'	LAT=31.5342894 N, LONG=103.2208429 W

**APPROXIMATELY 6.3 MILES W OF PYOTE, TEXAS**

- NOTES:
- COORDINATES AND BEARINGS ARE BASED ON A LAMBERT CONICAL PROJECTION OF THE STATE PLANE COORDINATE SYSTEM NAD 83, CORRS 96, TEXAS CENTRAL ZONE WITH A CONVERGENCE ANGLE OF -1.57849173 AND A DISTANCES ARE OF GRID VALUE WITH A CENTRAL COMBINED SCALE FACTOR OF 0.99998936.
  - THIS SURVEY WAS PERFORMED WITHOUT THE BENEFIT OF A TITLE REPORT AND REVIEW OF THE ABSTRACT OF TITLE. THERE MAY BE EASEMENTS AND/OR COVENANTS AFFECTING THIS PROPERTY NOT SHOWN HEREON. LOCATION OF IMPROVEMENTS AND/OR EASEMENTS WERE BEYOND COMMISSIONED SCOPE OF THIS PROJECT AND HAVE BEEN SPECIFICALLY OMITTED. VESTING DOCUMENTS NOT FURNISHED FOR THIS SURVEY.
  - SEE DOCUMENTS AND ELECTRONIC DATA FILED IN THE OFFICE OF WPG INC FOR COMPLETE RECONSTRUCTION OF THESE SECTIONS OR BLOCKS.
  - DOWNHOLE INFORMATION PROVIDED BY ENERGEN PERSONNEL.
  - SURFACE LOCATION IN THE AS-STAKED POSITION.

I, THE UNDERSIGNED, DO HEREBY CERTIFY THAT THE SURVEY INFORMATION FOUND ON THIS PLAT WAS DERIVED FROM ACTUAL FIELD NOTES OF ON-THE-GROUND SURVEYS MADE BY ME OR UNDER MY SUPERVISION AND IS TRUE AND CORRECT TO THE BEST OF MY KNOWLEDGE AND BELIEF. NO WARRANTY IS MADE OR INTENDED FOR THE LOCATION OF ANY OR ALL EASEMENTS THAT MAY EXIST WITHIN THE BOUNDS OF THIS SURVEY. THE INFORMATION PRESENTED HEREON IS FOR THE PRIVATE USE OF THE PARTY NAMED IN THE "REFERENCE PORTION" OF THE TITLE BLOCK AND DOES NOT CONSTITUTE A COMPLETE BOUNDARY SURVEY AS DEFINED BY THE "PROFESSIONAL LAND SURVEYING PRACTICES ACT."



- ☼ GAS WELL
- △ WATER INJECTION WELL
- OIL WELL
- LOCATED WELL
- DRY HOLE
- WATER WELL
- SHUT IN WELL

W.D. Watson, Jr. TEXAS R.P.L.S. No. 1989  
FILE: T:\WARD\BLOCK 17.dwg

DATE 4/5/13



P.O. DRAWER 11186  
MIDLAND, TEXAS 79702  
(432) 520-9200  
FAX (432) 520-9212  
wdwatson@wpg-us.com

AS-DRILLED PLAT  
**ENERGEN RESOURCES**  
**UNIVERSITY 17-18/2**  
SURFACE LOCATION: 400' FSWL & 567' FSWL  
1ST TAKE POINT: 1388' FSWL & 585' FSWL  
LAST TAKE POINT: 823' FSWL & 570' FSWL  
BOTTOM HOLE: 853' FSWL & 575' FSWL

SECTION 17, BLOCK 18, UNIVERSITY LAND SURVEY, WARD COUNTY, TEXAS  
DATE: APRIL 2, 2013 DATE SURVEYED: 9/24/12  
JOB NO.: 12-1431-00 FIELD BOOK 657/18 DRAFT NGH REV. 0