

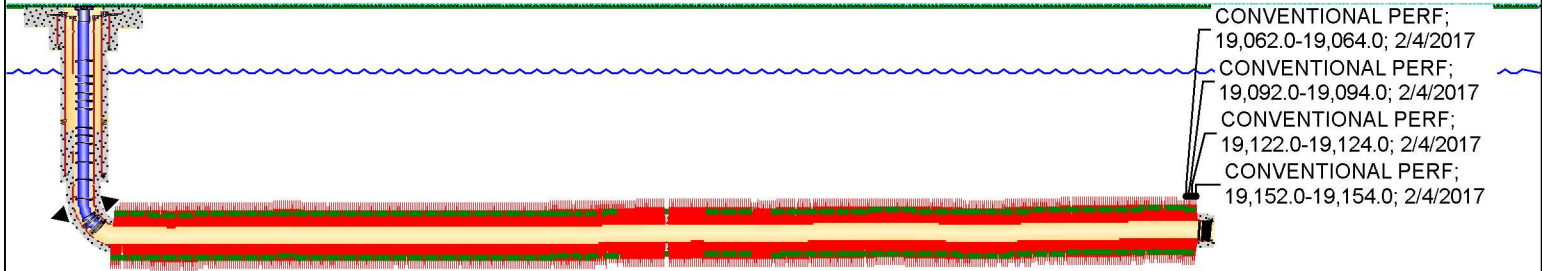
# UNIVERSITY 3-310PU 4H

## API #42-461-40446-0000, UPTON CO, TX

Property Sub 949805-004	Open Formation WOLFCAMP B3 (WFMP B3)	Spud Date 11/10/2016	Frac Date	On Prod Date 4/2/2017	Surface Legal Location 1305 FEL 100' FSL; BLK 3; SEC 10; UNIVERSITY LANDS	Latitude (°) 31.275328	Longitude (°) -101.828577
Ground Elevation (ft) 2,703.00	Orig KB Elev (ft) 2,729.00	KB-Grd (ft) 26.00	Total Depth (ftKB) 19,320.0	Total Depth All (TVD) (ftKB) ORIGINAL - 8,948.8; SIDETRACK 1 - 8,935.7		Well Profile HORIZONTAL	

HORIZONTAL - SIDETRACK 1, 7/26/2017 11:12:35 AM

Directional schematic (actual)



THIS WELLBORE DIAGRAM IS REFLECTIVE OF THE INFORMATION THAT HAS BEEN PLACED BY FIELD PERSONEL.  
IF ANY DATA VARIES FROM THE W-2 FILING, THE W-2 SHALL GOVERN.

### Openhole Detail

Section Des	Size (in)	Act Top (ftKB)	Act Btm (ftKB)
PRODUCTION	8 1/2	8,700.0	19,320.0

### Vertical/Lateral Lengths

Vert Len (ft)	Curve Len (ft)	Lat Len (ft)
501.0	865.0	10,460.9

### Kick-off Point

Top Depth (ftKB)
8,700.0

### Casing Detail

Description	OD (in)	Wt/Len (lb/ft)	Grade	Top Thread	ID (in)	Set Depth (ftKB)
SURFACE	13 3/8	54.50	J-55		12.62	1,224.3
INTERMEDIATE	9 5/8	40.00	L80-IC	BTC	8.84	7,966.0
PRODUCTION	5 1/2	20.00	P110-IC	TXPBTC	4.78	19,292.0

### Production Casing Cement Detail

Fluid	Class	Amount (sacks)	Vol Pumped (bbl)	Est Top (ftKB)
MUDPUSH	0	0	45.0	6,400.0
TAIL CMT	CLASS H	1,997	561.0	7,366.0
DSPLMT			426.0	26.5

### Cement Detail

Stg No.	Des	Final Top Depth (ftKB)	Btm (ftKB)	Top Measurement Method
1	SURFACE CASING CEMENT	29.9	1,224.3	RETURNS TO SURFACE
1	Intermediate 2 stage cement	5,298.0	7,966.0	VOLUME CALCULATIONS
2	Intermediate 2 stage cement	26.0	5,290.0	RETURNS TO SURFACE
1	CEMENT PLUG	8,362.0	9,151.0	VOLUME CALCULATIONS
1	CEMENT PLUG	7,736.0	8,362.0	VOLUME CALCULATIONS
1	PRODUCTION CASING CEMENT	5,612.0	19,320.0	UN-PRESSURIZED CBL

### Tubing Detail

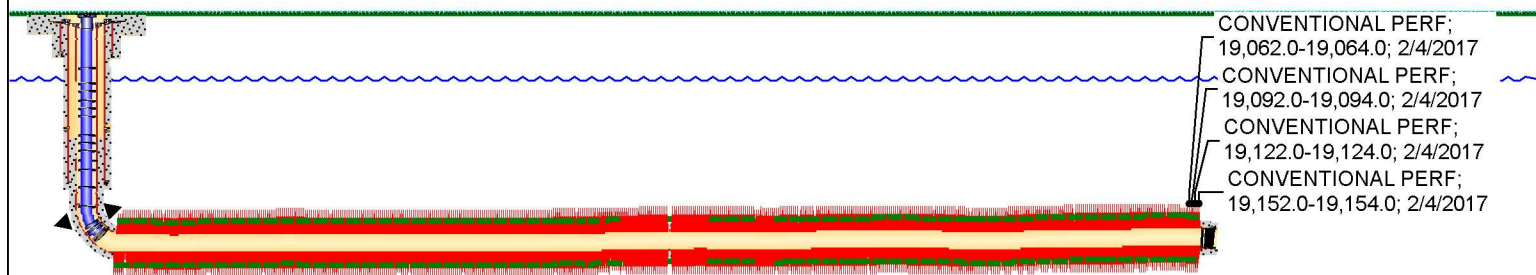
Jts	OD (in)	Wt (lb/ft)	Grade	ID (in)	Len (ft)	Top (ftKB)	Item Des
1	5 1/2	6.50	L-80	2.441	0.75	25.4	HANGER
1	2 7/8	6.50	L-80	2.441	33.05	26.2	TUBING
1	2 7/8	6.50	L-80	2.441	1.95	59.2	TUBING sub
55	2 7/8	6.50	L-80	2.441	1,818.03	61.2	TUBING
1	4.335	6.50	L-80	2.441	4.10	1,879.2	GAS LIFT MANDREL

# UNIVERSITY 3-310PU 4H

## API #42-461-40446-0000, UPTON CO, TX

HORIZONTAL - SIDETRACK 1, 7/26/2017 11:12:46 AM

Directional schematic (actual)



### Tubing Detail

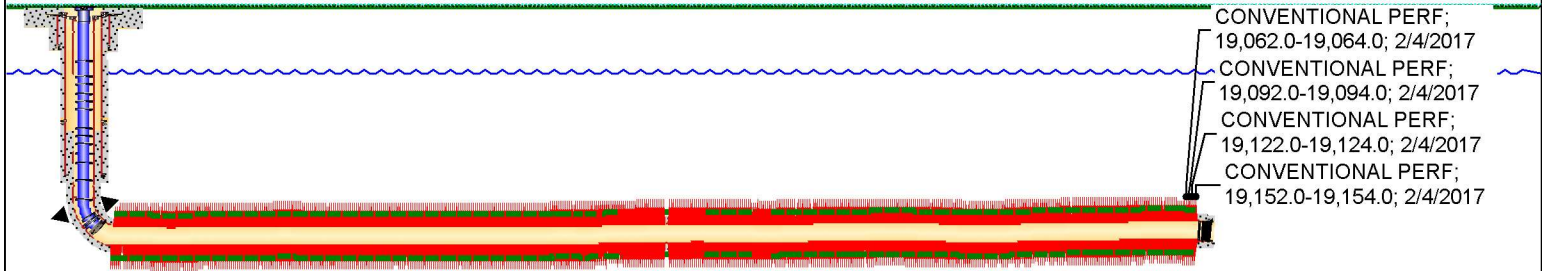
Jts	OD (in)	Wt (lb/ft)	Grade	ID (in)	Len (ft)	Top (ftKB)	Item Des
30	2 7/8	6.50	L-80	2.441	992.46	1,883.3	TUBING
1	4.335	6.50	L-80	2.441	4.10	2,875.8	GAS LIFT MANDREL
15	2 7/8	6.50	L-80	2.441	496.07	2,879.9	TUBING
1	4.335	6.50	L-80	2.441	4.10	3,375.9	GAS LIFT MANDREL
15	2 7/8	6.50	L-80	2.441	495.92	3,380.0	TUBING
1	4.335	6.50	L-80	2.441	4.10	3,875.9	GAS LIFT MANDREL
16	2 7/8	6.50	L-80	2.441	529.11	3,880.0	TUBING
1	4.335	6.50	L-80	2.441	4.10	4,409.2	GAS LIFT MANDREL
15	2 7/8	6.50	L-80	2.441	496.17	4,413.3	TUBING
1	4.335	6.50	L-80	2.441	4.10	4,909.4	GAS LIFT MANDREL
15	2 7/8	6.50	L-80	2.441	496.25	4,913.5	TUBING
1	4.335	6.50	L-80	2.441	4.10	5,409.8	GAS LIFT MANDREL
15	2 7/8	6.50	L-80	2.441	495.99	5,413.9	TUBING
1	4.335	6.50	L-80	2.441	4.10	5,909.9	GAS LIFT MANDREL
16	2 7/8	6.50	L-80	2.441	526.53	5,914.0	TUBING
1	4.335	6.50	L-80	2.441	4.10	6,440.5	GAS LIFT MANDREL
15	2 7/8	6.50	L-80	2.441	496.08	6,444.6	TUBING
1	4.335	6.50	L-80	2.441	4.10	6,940.7	GAS LIFT MANDREL
15	2 7/8	6.50	L-80	2.441	495.74	6,944.8	TUBING
1	4.335	6.50	L-80	2.441	4.10	7,440.5	GAS LIFT MANDREL
16	2 7/8	6.50	L-80	2.441	528.96	7,444.6	TUBING
1	4.335	6.50	L-80	2.441	4.10	7,973.6	GAS LIFT MANDREL
15	2 7/8	6.50	L-80	2.441	496.34	7,977.7	TUBING
1	4.335	6.50	L-80	2.441	4.10	8,474.0	GAS LIFT MANDREL
13	2 7/8	6.50	L-80	2.441	430.96	8,478.1	TUBING
1	3.68	6.50	L-80	2.313	1.10	8,909.1	X-NIPPLE
1	2 7/8	6.50	L-80	2.441	32.70	8,910.2	TUBING
1	4.335	6.50	L-80	2.441	4.10	8,942.9	GAS LIFT MANDREL
1	4.17	5.95	L-80	2.441	9.40	8,947.0	GAUGE CARRIER
1	4.335	6.50	L-80	1.995	4.10	8,956.4	CHEMICAL INJECTION MANDREL
1	2 7/8	6.50	L-80	2.441	32.78	8,960.5	TUBING
1	4 1/2	6.50	L-80	2.25	1.50	8,993.3	ON-OFF TOOL
1	4 1/2	6.50	L-80	2.441	7.80	8,994.8	PACKER

# UNIVERSITY 3-310PU 4H

## API #42-461-40446-0000, UPTON CO, TX

HORIZONTAL - SIDETRACK 1, 7/26/2017 11:12:55 AM

Directional schematic (actual)



### Tubing Detail

Jts	OD (in)	Wt (lb/ft)	Grade	ID (in)	Len (ft)	Top (ftKB)	Item Des
1	3 1/4	6.50	L-80	2.441	0.45	9,002.6	Pump out plug EOT