

Type or print only

RAILROAD COMMISSION OF TEXAS
Oil and Gas DivisionForm G-1
Rev. 4/1/83

483-047

API No 42-413-31656

7 RRC District No.

7C

8 RRC Gas ID No.

126504

Gas Well Back Pressure Test,
Completion or Recompletion Report, and Log

1 FIELD NAME (as per RRC Records or Wildcat) University 54(Ellenberger)		2 LEASE NAME University "23"		9 Well No. 1	
3 OPERATOR'S NAME (Exactly as shown on Form P-5, Organization Report) Questa Oil & Gas Co.			RRC Operator No 684635		10. County of well site Schleicher
4 ADDRESS 7010 S. Yale, STE. 200, Tulsa, OK 74136				11 Purpose of filing Initial Potential <input checked="" type="checkbox"/> Retest <input type="checkbox"/> Reclass <input type="checkbox"/> Well record only <input type="checkbox"/> (Explain in remarks)	
5 Location (Section, Block, and Survey) Sec. 23, BLK. 53, University Lands		5b Distance and direction to nearest town in this county 20.8 miles N from Eldorado			
6 If operator has changed within last 60 days, name former operator --		12. If workover or reclass, give former field (with reservoir) & Gas ID or oil lease no FIELD & RESERVOIR		GAS ID or OIL LEASE # Oil—O Gas—G WELL #	
13. Pipe Line Connection Enerfin		14 Completion or recompletion date 2-6-88		15 Any condensate on hand at time of workover or recompletion? <input type="checkbox"/> Yes <input checked="" type="checkbox"/> No	
				16 Type of Electric or other Log Run DIL,OIL-SFL, CDL-CNL-ML	

Section I

GAS MEASUREMENT DATA

Date of Test 2-9-88		Gas Measurement Method (Check One) Orifice Meter <input type="checkbox"/> Flange Taps <input type="checkbox"/> Pipe Taps <input type="checkbox"/> Positive Choke <input checked="" type="checkbox"/> Orifice Vent Meter <input type="checkbox"/> Pitot Tube <input type="checkbox"/> Critical-flow Prover <input type="checkbox"/>						Gas produced during test 164 MCF		
Run No	Line Size	Orif or Choke Size	24 Hr Coeff Orif or Choke	Static P _m or Choke Press	Diff h _w	Flow Temp °F	Temp Factor F _{tf}	Gravity Factor F _g	Compress Factor F _{pv}	Volume MCF/DAY
1	2"	8/64	.347	1983.2		55	1.0048	.8944	1.300	804 ✓
2	2"	10/64	.552	1633.2		54	1.0058	.8944	1.290	1048
3	2"	12/64	.802	1260.2		56	1.0039	.8944	1.226	1113 ✓
4	2"	14/64	1.116	853.2		57	1.0029	.8944	1.141	975

Section II

FIELD DATA AND PRESSURE CALCULATIONS

Gravity (Dry Gas) .700		Gravity Liquid Hydrocarbon 64.0 Deg. API		Gas-Liquid Hydro Ratio 95,000 CF/Bbl		Gravity of Mixture G _{mix} =		Avg Shut-in Temp 123 °F		Bottom Hole Temp 191 °F @ 7825 (Depth)	
Defl ^{8/3} =		$\sqrt{T_f} = \sqrt{\quad} =$				$\sqrt{GL} = \sqrt{\quad} =$					
$C = \frac{1118 \times (D_{eff})^{8/3}}{\sqrt{T}} =$						$\frac{\sqrt{GL}}{C} = \quad =$					
Run No	Time of Run Min	Choke Size	Wellhead Press. PSIA P _w	Wellhead Flow Temp °F	P _w ² (Thousands)	P ₁ (Thousands)	P _w /P ₁				
Shut-In 4320		SI	2152.2	55							
1	60	8/64	1983.2	55							
2	60	10/64	1633.2	54							
3	60	12/64	1260.2	56							
4	60	14/64	853.2	57							
Run No	F	K	S = $\frac{1}{z}$	E ^{ks}	P _f and P _s	P _f ² and P _s ² (thousands)	P _f ² - P _s ² (thousands)	Angle of Slope			
Shut-In					2728.2	7443 ✓		63 1/2°			
1	Used subsurface pressure equipment				2545.2	6478	965	n .499.....			
2	Range: 0-3000psi				2106.2	4436 ✓	3007 ✓	Absolute Open Flow			
3	Serial #: 60785				1576.2	2484	4959	1,400 ... MCF/DAY			
4					1085.2	1177 ✓	6266 ✓				

WELL TESTER'S CERTIFICATION I declare under penalties prescribed in Sec 91.143, Texas Natural Resources Code, that I conducted or supervised this test and that data and facts shown in Sections I and II above are true, correct, and complete, to the best of my knowledge Bottomhole temperature and the diameter and length of flow string were furnished by the operator of the well

Signature Well Tester

C. Allen Well Testing Inc

Name of Company

RRC Representative

OPERATOR'S CERTIFICATION I declare under penalties prescribed in Sec 91.143, Texas Natural Resources Code, that I am authorized to make this report, that I prepared or supervised and directed this report, and that data and facts stated therein are true, correct, and complete, to the best of my knowledge

Signature Operator's representative Alan W. Meeks

Vice President

Title

2-26-88

Date

Tel

918-494-6055

A/C Number

413-31656

114

SECTION III DATA ON WELL COMPLETION AND LOG (Not Required on Retest)

17 Type of Completion
 New Well ☒ Deepening ☐ Plug Back ☐ Other ☐

18 Permit to Drill, Plug Back or Deepen DATE 12-3-87 PERMIT NO. 339587
 Rule 37 Exception CASE NO.
 Water Injection PERMIT NO.
 Salt Water Disposal PERMIT NO.
 Other PERMIT NO.

19 Notice of Intention to Drill this well was filed in Name of
 QUESTA OIL & GAS CO.

20 Number of producing wells on this lease in this field (reservoir) including this well ONE
 21 Total number of acres in this lease 332

22 Date Plug Back, Deepening, WorkOver or Drilling Operations Commenced 1-5-88 Completed 1-22-88
 23. Distance to nearest well, Same Lease & Reservoir NA

24 Location of well, relative to nearest lease boundaries of lease on which this well is located 660 Feet From South Line and 660 Feet from West Line of the University "23" Lease

25 Elevation (DF, RKB, RT, GR, ETC) GL-2552
 26 Was directional survey made other than inclination (Form W-12)? ☐ Yes ☒ No

27. Top of Pay 7813' 28 Total Depth 7870' 29. P B Depth 7852' 30. Surface Casing Determined by Field ☐ Rules ☐ Recommendation of T D W R ☐ Railroad Commission (Special) ☒
 Dt of Letter 2-16-88

31. Is well multiple completion? ☐ Yes ☒ No
 32 If multiple completion, list all reservoir names (completions in this well) and Oil Lease or Gas ID No FIELD & RESERVOIR
 33 Intervals Drilled by. Rotary Tools Cable Tools
 X

34 Name of Drilling Contractor Mellon
 35. Is Cementing Affidavit Attached? ☒ Yes ☐ No

36. CASING RECORD (Report All Strings Set in Well)

CASING SIZE	WT #/FT.	DEPTH SET	MULTISTAGE TOOL DEPTH	TYPE & AMOUNT CEMENT (sacks)	HOLE SIZE	TOP OF CEMENT	SLURRY VOL cu. ft.
8 5/8"	23	1266'	--	300sx 75/25A	11"	Surface	764
			poz, 100sx	75/25A poz,			
			100sx "A"				
4 1/2	11.60	7870'	-----	425sx 75/c poz	7-7/8"	6060'	574

37 LINER RECORD

Size	TOP	Bottom	Sacks Cement	Screen
--				

38 TUBING RECORD

Size	Depth Set	Packer Set	From	To
2-3/8"	7741'	--	7814'	7832'
			From	To
			From	To
			From	To

39 Producing Interval (this completion) Indicate depth of perforation or open hole

40 ACID, SHOT, FRACTURE, CEMENT SQUEEZE, ETC.

Depth Interval	Amount and Kind of Material Used
7814'-7832'	1,500 gals. 15% NEFE ACID

41. FORMATION RECORD (LIST DEPTHS OF PRINCIPAL GEOLOGICAL MARKERS AND FORMATION TOPS)

Formations	Depth	Formations	Depth
		Wolfcamp	5213'
Clearfork	1732'	Canyon	6968'
Sprayberry	2902'	Ellenburger	7813'

REMARKS

Cementer: Fill in shaded areas
Operator: Fill in other items

RAILROAD COMMISSION OF TEXAS
Oil and Gas Division

1 Operator's Name (As shown on Form P-5, Organization Report) QUESTA OIL & GAS CO.	2 RRC Operator No 684635	3 RRC District No 7C	4 County of Well Site SCHLEICHER
5 Field Name (Wildcat or exactly as shown on RRC records) UNIVERSITY 54 (ELLENBURGER)	6 API No 42-413-31656	7 Drilling Permit No 339587	
8 Lease Name UNIVERSITY "23"	9 Rule 37 Case No --	10 Oil Lease/Gas ID No -- 126504	11 Well No XX-1

CASING CEMENTING DATA		SURFACE CASING	INTER-MEDIATE CASING	PRODUCTION CASING		MULTI-STAGE CEMENTING PROCESS	
				Single String	Multiple Parallel Strings	Tool	Shoe
12 Cementing Date		1-7-88					
13 •Drilled hole size		11					
•Est % wash or hole enlargement		100%					
14 Size of casing (in OD)		8 5/8					
15 Top of liner (ft)		--					
16 Setting depth (ft)		1266					
17 Number of centralizers used		7					
18 Hrs waiting on cement before drill-out		12					
1st Slurry	19 API cement used: No. of sacks ▶	300					
	Class ▶	75/25A/Poz					
	Additives ▶	6%D20+2%S1					
2nd Slurry	No of sacks ▶	100					
	Class ▶	75/25A/Poz					
	Additives ▶	2% S1					
3rd Slurry	No of sacks ▶	100					
	Class ▶	A					
	Additives ▶	2% S1					
1st	20. Slurry pumped: Volume (cu. ft) ▶	522					
	Height (ft) ▶	SURFACE					
2nd	Volume (cu. ft) ▶	124					
	Height (ft) ▶	800'					
3rd	Volume (cu. ft) ▶	118					
	Height (ft) ▶	SURFACE					
Total	Volume (cu. ft) ▶	764					
	Height (ft) ▶	SURFACE					
21 Was cement circulated to ground surface (or bottom of cellar) outside casing?		YES					
22 Remarks							

RECEIVED
R. R. C. OF TEXAS
MAR 1 1988
OIL & GAS
SAN ANGELO, TEXAS

CEMENTING TO PLUG AND ABANDON	PLUG # 1	PLUG # 2	PLUG # 3	PLUG # 4	PLUG # 5	PLUG # 6	PLUG # 7	PLUG # 8
23. Cementing date								
24. Size of hole or pipe plugged (in.)								
25. Depth to bottom of tubing or drill pipe (ft.)								
26. Sacks of cement used (each plug)								
27. Slurry volume pumped (cu. ft.)								
28. Calculated top of plug (ft.)								
29. Measured top of plug, if tagged (ft.)								
30. Slurry wt. (lbs/gal)								
31. Type cement								

CEMENTER'S CERTIFICATE: I declare under penalties prescribed in Sec. 91.143, Texas Natural Resources Code, that I am authorized to make this certification, that the cementing of casing and/or the placing of cement plugs in this well as shown in the report was performed by me or under my supervision, and that the cementing data and facts presented on both sides of this form are true, correct, and complete, to the best of my knowledge. This certification covers cementing data only.

D.L. HARRIS SS III
Name and title of cementer's representative

DOWELL SCHLUMBERGER
Cementing Company Signature

P.O. BOX 1124 SONORA, TX 76950 915 - 387-3526 1 - 07 - 88
Address City, State, Zip Code Tel.: Area Code Number Date: mo. day yr.

OPERATOR'S CERTIFICATE: I declare under penalties prescribed in Sec. 91.143, Texas Natural Resources Code, that I am authorized to make this certification, that I have knowledge of the well data and information presented in this report, and that data and facts presented on both sides of this form are true, correct, and complete, to the best of my knowledge. This certification covers all well data.

ALAN W. MEEKS
Typed or printed name of operator's representative

VICE PRESIDENT
Title

Alan W. Meeks
Signature

7010 S. YALE, SUITE 200 TULSA, OK 74136 (918) 494-6055 2-26-88
Address City, State, Zip Code Tel.: Area Code Number Date: mo. day yr.

Instructions to Form W-15, Cementing Report

IMPORTANT: Operators and cementing companies must comply with the requirements of the Commission's Statewide Rules 8 (Water Protection), 13 (Casing, Cementing, Drilling, and Completion), and 14 (Well Plugging). For offshore operations, see the requirements of Rule 13 (c).

A. What to file. An operator should file an original and one copy of the completed Form W-15 for each cementing company used on a well. The cementing of different casing strings on a well by one cementing company may be reported on one form. Form W-15 should be filed with the following:

- An initial oil or gas completion report, **Form W-2** or **G-1**, as required by Statewide or special field rules;
- **Form W-4**, Application for Multiple Completion, if the well is a multiple parallel casing completion; and
- **Form W-3**, Plugging Record, unless the W-3 is signed by the cementing company representative. When reporting dry holes, operators must complete **Form W-15**, in addition to **Form W-3**, to show any casing cemented in the hole.

B. Where to file. The appropriate Commission District Office for the county in which the well is located.

C. Surface casing. An operator must set and cement sufficient surface casing to protect all usable-quality water strata, as defined by the Texas Department of Water Resources, Austin. Before drilling a well in any field or area in which no field rules are in effect or in which surface casing requirements are not specified in the applicable rules, an operator must obtain a letter from the Department of Water Resources stating the protection depth. Surface casing should not be set deeper than 200 feet below the specified depth without prior approval from the Commission.

D. Centralizers. Surface casing must be centralized at the shoe, above and below a stage collar or diverting tool, if run, and through usable-quality water zones. In nondeviated holes, a centralizer must be placed every fourth joint from the cement shoe to the ground surface or to the bottom of the cellar. All centralizers must meet API specifications.

E. Exceptions and alternative casing programs. The District Director may grant an exception to the requirements of Statewide Rule 13. In a written application, an operator must state the reason for the requested exception and outline an alternate program for casing and cementing through the protection depth for strata containing usable-quality water. The District Director may approve, modify, or reject a proposed program. **An operator must obtain approval of any exception before beginning casing and cementing operations.**

F. Intermediate and production casing. For specific technical requirements, operators should consult Statewide Rule 13 (b) (3) and (4).

G. Plugging and abandoning. Cement plugs must be placed in the wellbore as required by Statewide Rule 14. The District Director may require additional cement plugs. For onshore or inland wells, a 10-foot cement plug must be placed in the top of the well, and the casing must be cut off three feet below the ground surface. All cement plugs, except the top plug, must have sufficient slurry volume to fill 100 feet of hole, plus ten percent for each 1,000 feet of depth from the ground surface to the bottom of the plug.

To plug and abandon a well, operators must use only cementers approved by the Director of Field Operations. Cementing companies, service companies, or operators can qualify as approved cementers by demonstrating that they are able to mix and pump cement in compliance with Commission rules and regulations.

Cementer. Fill in shaded areas
Operator Fill in other items

Form W-15
Cementing Report
Rev 4/1/83
483-045

RAILROAD COMMISSION OF TEXAS
Oil and Gas Division

1 Operator's Name (As shown on Form P-5, Organization Report) QUESTA OIL & GAS CO.	2 RRC Operator No 684635	3 RRC District No 7C	4 County of Well Site SCHLEICHER
5 Field Name (Wildcat or exactly as shown on RRC records) UNIVERSITY 54(ELLENBURGER)	6 API No 42-413-31656	7 Drilling Permit No 339587	
8 Lease Name UNIVERSITY "23"	9 Rule 37 Case No --	10 Oil Lease/Gas ID No --126504	11 Well No 23-1

CASING CEMENTING DATA.		SURFACE CASING	INTER-MEDIATE CASING	PRODUCTION CASING		MULTI-STAGE CEMENTING PROCESS	
				Single String	Multiple Parallel Strings	Tool	Shoe
12 Cementing Date				1-21-88			
13 •Drilled hole size				7 7/8			
•Est % wash or hole enlargement				25			
14 Size of casing (in OD)				4½			
15 Top of liner (ft)				--			
16 Setting depth (ft)				7870			
17 Number of centralizers used				13			
18 Hrs waiting on cement before drill-out				--			
1st Slurry	19 API cement used: No of sacks ▶			425			
	Class ▶			75/25 C:Poz			
	Additives ▶			5#/skD44+.2% D46			
2nd Slurry	No of sacks ▶						
	Class ▶						
	Additives ▶						
3rd Slurry	No of sacks ▶						
	Class ▶						
	Additives ▶						
1st	20 Slurry pumped. Volume (cu. ft) ▶			574			
	Height (ft) ▶			5301			
2nd	Volume (cu. ft) ▶						
	Height (ft) ▶						
3rd	Volume (cu. ft.) ▶						
	Height (ft) ▶						
Total	Volume (cu. ft.) ▶			574			
	Height (ft) ▶			5301			
21. Was cement circulated to ground surface (or bottom of cellar) outside casing?				NO			
22 Remarks							

RECEIVED
R. R. C. OF TEXAS
MAR 1 1988
OIL & GAS
SAN ANGELO, TEXAS

OVER

CEMENTING TO PLUG AND ABANDON	PLUG # 1	PLUG # 2	PLUG # 3	PLUG # 4	PLUG # 5	PLUG # 6	PLUG # 7	PLUG # 8
23. Cementing date								
24. Size of hole or pipe plugged (in.)								
25. Depth to bottom of tubing or drill pipe (ft.)								
26. Sacks of cement used (each plug)								
27. Slurry volume pumped (cu. ft.)								
28. Calculated top of plug (ft.)								
29. Measured top of plug, if tagged (ft.)								
30. Slurry wt. (lbs/gal)								
31. Type cement								

CEMENTER'S CERTIFICATE: I declare under penalties prescribed in Sec. 91.143, Texas Natural Resources Code, that I am authorized to make this certification, that the cementing of casing and/or the placing of cement plugs in this well as shown in the report was performed by me or under my supervision, and that the cementing data and facts presented on both sides of this form are true, correct, and complete, to the best of my knowledge. This certification covers cementing data only.

D.L. HARRIS SS III DOWELL SCHLUMBERGER
 Name and title of cementer's representative Cementing Company Signature
P.O. BOX 1124 SONORA, TX 76950 915-387-3526 01 - 21 - 88
 Address City, State, Zip Code Tel.: Area Code Number Date: mo. day yr.

OPERATOR'S CERTIFICATE: I declare under penalties prescribed in Sec. 91.143, Texas Natural Resources Code, that I am authorized to make this certification, that I have knowledge of the well data and information presented in this report, and that data and facts presented on both sides of this form are true, correct, and complete, to the best of my knowledge. This certification covers all well data.

ALAN W. MEEKS VICE PRESIDENT
 Typed or printed name of operator's representative Title Signature
7010 S. YALE SUITE 200 TULSA, OK 74136 918 494-6055 2-26-88
 Address City, State, Zip Code Tel.: Area Code Number Date: mo. day yr.

Instructions to Form W-15, Cementing Report

IMPORTANT: Operators and cementing companies must comply with the requirements of the Commission's Statewide Rules 8 (Water Protection), 13 (Casing, Cementing, Drilling, and Completion), and 14 (Well Plugging). For offshore operations, see the requirements of Rule 13 (c).

A. What to file. An operator should file an original and one copy of the completed Form W-15 for each cementing company used on a well. The cementing of different casing strings on a well by one cementing company may be reported on one form. Form W-15 should be filed with the following:

- An initial oil or gas completion report, Form W-2 or G-1, as required by Statewide or special field rules,
- Form W-4, Application for Multiple Completion, if the well is a multiple parallel casing completion; and
- Form W-3, Plugging Record, unless the W-3 is signed by the cementing company representative. When reporting dry holes, operators must complete Form W-15, in addition to Form W-3, to show any casing cemented in the hole.

B. Where to file. The appropriate Commission District Office for the county in which the well is located.

C. Surface casing. An operator must set and cement sufficient surface casing to protect all usable-quality water strata, as defined by the Texas Department of Water Resources, Austin. Before drilling a well in any field or area in which no field rules are in effect or in which surface casing requirements are not specified in the applicable rules, an operator must obtain a letter from the Department of Water Resources stating the protection depth. Surface casing should not be set deeper than 200 feet below the specified depth without prior approval from the Commission.

D. Centralizers. Surface casing must be centralized at the shoe, above and below a stage collar or diverting tool, if run, and through usable-quality water zones. In nondeviated holes, a centralizer must be placed every fourth joint from the cement shoe to the ground surface or to the bottom of the cellar. All centralizers must meet API specifications.

E. Exceptions and alternative casing programs. The District Director may grant an exception to the requirements of Statewide Rule 13. In a written application, an operator must state the reason for the requested exception and outline an alternate program for casing and cementing through the protection depth for strata containing usable-quality water. The District Director may approve, modify, or reject a proposed program. **An operator must obtain approval of any exception before beginning casing and cementing operations.**

F. Intermediate and production casing. For specific technical requirements, operators should consult Statewide Rule 13 (b) (3) and (4).

G. Plugging and abandoning. Cement plugs must be placed in the wellbore as required by Statewide Rule 14. The District Director may require additional cement plugs. For onshore or inland wells, a 10-foot cement plug must be placed in the top of the well, and the casing must be cut off three feet below the ground surface. All cement plugs, except the top plug, must have sufficient slurry volume to fill 100 feet of hole, plus ten percent for each 1,000 feet of depth from the ground surface to the bottom of the plug.

To plug and abandon a well, operators must use only cementers approved by the Director of Field Operations. Cementing companies, service companies, or operators can qualify as approved cementers by demonstrating that they are able to mix and pump cement in compliance with Commission rules and regulations.

RAILROAD COMMISSION OF TEXAS
OIL AND GAS DIVISIONForm W-12
(1-1-71)

INCLINATION REPORT (One Copy Must Be Filed With Each Completion Report.)		6. RRC District 7C
1. FIELD NAME (as per RRC Records or Wildcat) UNIVERSITY 54 (ELLENBURGER)	2. LEASE NAME University "23"	7. RRC Lease Number. (Oil completions only)
3. OPERATOR Questa Oil & Gas Co.		8. Well Number XXX-1
4. ADDRESS 7010 South Yale, Suite 200 Tulsa, Oklahoma 74136		9. RRC Identification Number (Gas completions only) -- 126504
5. LOCATION (Section, Block, and Survey) SEC. 23, BLK. 53, University Lands		10. County Schleicher

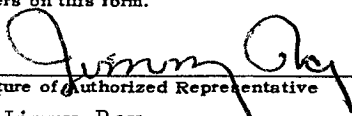
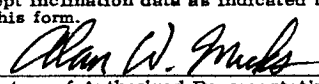
RECORD OF INCLINATION

*11. Measured Depth (feet)	12. Course Length (Hundreds of feet)	*13. Angle of Inclination (Degrees)	14. Displacement per Hundred Feet (Sine of Angle X100)	15. Course Displacement (feet)	16. Accumulative Displacement (feet)
527	5.27	1/2	.87	4.59 ✓	4.59
1285	7.58	3/4	1.31	9.93	14.52
1799	5.14	3/4	1.31	6.74	21.26
2306	5.07	1/4	.44	2.23	23.49
2814	5.08	3/4	1.31	6.66	30.15
3321	5.07	1	1.75	8.88 ✓	39.03 ✓
3829	5.08	1	1.75	8.89	47.92
4337	5.08	1 1/4	2.18	11.08 ✓	59.00
4846	5.09	1	1.75	8.91	67.91
5352	5.06	1	1.75	8.86	76.77
5858	5.06	1 1/2	2.62	13.26 ✓	90.03
6365	5.07	1 3/4	3.05	15.47 ✓	105.50
6923	5.58	1/4	.44	2.46	107.96
7435 ✓	5.12	1/2	.87	4.46 ✓	112.42 ✓

If additional space is needed, use the reverse side of this form.

17. Is any information shown on the reverse side of this form? ☐ yes ☒ no
18. Accumulative total displacement of well bore at total depth of 7435 feet = 112.42 feet.
- *19. Inclination measurements were made in - ☐ Tubing ☐ Casing ☐ Open hole ☒ Drill Pipe
20. Distance from surface location of well to the nearest lease line 660 feet.
21. Minimum distance to lease line as prescribed by field rules 467 feet.
22. Was the subject well at any time intentionally deviated from the vertical in any manner whatsoever? NO

(If the answer to the above question is "yes", attach written explanation of the circumstances.)

INCLINATION DATA CERTIFICATION	OPERATOR CERTIFICATION
I declare under penalties prescribed in Article 6036c, R.C.S., that I am authorized to make this certification, that I have personal knowledge of the inclination data and facts placed on both sides of this form and that such data and facts are true, correct, and complete to the best of my knowledge. This certification covers all data as indicated by asterisks (*) by the item numbers on this form.	I declare under penalties prescribed in Article 6036c, R.C.S., that I am authorized to make this certification, that I have personal knowledge of all information presented in this report, and that all data presented on both sides of this form are true, correct, and complete to the best of my knowledge. This certification covers all data and information presented herein except inclination data as indicated by asterisks (*) by the item numbers on this form.
 Signature of Authorized Representative	 Signature of Authorized Representative
<u>Jimmy Ray</u> Name of Person and Title (type or print)	<u>Alan W. Meeks Vice President</u> Name of Person and Title (type or print)
<u>Mellon Drilling</u> Name of Company	<u>Questa Oil & Gas Co.</u> Operator
Telephone: <u>915</u> <u>653-7455</u> Area Code	Telephone: <u>(918)</u> <u>494-6055</u> Area Code

Railroad Commission Use Only:

Approved By: Marilyn Hartman Title: Clinical Supervisor Date: 3-1-88

* Designates items certified by company that conducted the inclination surveys.

1st spot Exceeds 500' max.

7C-10#126504

RECORD OF INCLINATION (Continued from reverse side)

[illegible]

If additional space is needed, attach separate sheet and check here. ☐

REMARKS:

- INSTRUCTIONS -

An inclination survey made by persons or concerns approved by the Commission shall be filed on a form prescribed by the Commission for each well drilled or deepened with rotary tools or when, as a result of any operation, the course of the well is changed. No inclination survey is required on wells that are drilled and completed as dry holes that are plugged and abandoned. (Inclination surveys are required on re-entry of abandoned wells.) Inclination surveys must be made in accordance with the provisions of Statewide Rule 11.

This report shall be filed in the District Office of the Commission for the district in which the well is drilled; by attaching one copy to each appropriate completion for the well. (except Plugging Report)

The Commission may require the submittal of the original charts, graphs, or discs, resulting from the surveys.

**ELECTRIC LOG
STATUS REPORT****INSTRUCTIONS**When to file the L-1

- with Forms G-1, W-2, and GT-1 for new and deepened gas, oil, and geothermal wells
- with Form W-3 for plugged dry holes
- when sending in a log which was held under a request for confidentiality and the period of confidentiality has not yet expired

When the L-1 is NOT required

- with Forms W-2, G-1, and GT-1 filed for injection wells, disposal wells, water supply wells, service wells, re-test wells, re-classifications, and plugbacks of oil, gas, and geothermal wells
- with Form W-3 for plugging of other than a dry hole

Where to file the L-1

- with the appropriate Commission district office

Filling out the L-1

- Section I and the signature section must be filled out for all wells
- complete only the appropriate part of Section II

Type of log required

- any wireline survey run for the purpose of obtaining lithology, porosity, or resistivity information
- no more than one such log is required but it must be of the subject well
- if such a log is NOT run on the subject well, do NOT substitute any other type of log; just select Section II, Part A below

SEE REVERSE SIDE**SECTION I. IDENTIFICATION**

Operator Name Questa Oil & Gas Co.	District No. 7-C	Completion Date 5-2-89
Field Name Baker Ranch (Canyon)	Drilling Permit No. 339587	
Lease Name University 23	Lease/ID No.	Well No. 1
County Schleicher	API No. 42 - 413-31656	

SECTION II. LOG STATUS (complete either A. or B.)

☐ **A. BASIC ELECTRIC LOG NOT RUN**

☒ **B. BASIC ELECTRIC LOG RUN (select one)**

☒ 1. Confidentiality requested.

☐ 2. Confidentiality already granted on basic electric log covering this interval (applicable to deepened wells only).

☐ 3. Basic electric log covering this interval already on file with Commission (applicable to deepened wells only).

☐ 4. Log attached to (select one)

☐ (a) Form L-1 (this form). If the company/lease name on log is different from that shown in Section I, please enter name on log here: _____

Check here if attached log is being submitted after being held confidential ☐ .

☐ (b) Form P-7, Application for Discovery Allowable and New Field Designation.

☐ (c) Form W-4, Application for Multiple Completion: lease or ID no.(s) _____, well no.(s) _____

Carole Johnson
signature

Carole Johnson
name (print)

Well Operations
title

(918) 494-6055
phone

9/5/91
date

For Railroad Commission use only

**ELECTRIC LOG
STATUS REPORT****FORM L-1**

Rev. 11/01/86

INSTRUCTIONSWhen to file the L-1

- with Forms G-1, W-2, and GT-1 for new and deepened gas, oil, and geothermal wells
- with Form W-3 for plugged dry holes
- when sending in a log which was held under a request for confidentiality and the period of confidentiality has not yet expired

When the L-1 is NOT required

- with Forms W-2, G-1, and GT-1 filed for injection wells, disposal wells, water supply wells, service wells, re-test wells, re-classifications, and plugbacks of oil, gas, and geothermal wells
- with Form W-3 for plugging of other than a dry hole

Where to file the L-1

- with the appropriate Commission district office

Filling out the L-1

- Section I and the signature section must be filled out for all wells
- complete only the appropriate part of Section II

Type of log required

- any wireline survey run for the purpose of obtaining lithology, porosity, or resistivity information
- no more than one such log is required but it must be of the subject well
- if such a log is NOT run on the subject well, do NOT substitute any other type of log; just select Section II, Part A below

SEE REVERSE SIDE**SECTION I. IDENTIFICATION**

Operator Name QUESTA OIL & GAS CO.	District No. 7C	Completion Date 2-6-88
Field Name UNIVERSITY 54 (ELLENBURGER)	Drilling Permit No. 339587	
Lease Name UNIVERSITY "23"	Lease/ID No. --- 126504	Well No. 1
County schleicher	API No. 42 413-31656	

SECTION II. LOG STATUS (complete either A. or B.)

<input type="checkbox"/> A. BASIC ELECTRIC LOG NOT RUN	
<input checked="" type="checkbox"/> B. BASIC ELECTRIC LOG RUN	
1. Log interval(s):	from 1268 to 7870 from _____ to _____
2. Select either a or b	
<input checked="" type="checkbox"/> a. Confidentiality requested.	
<input type="checkbox"/> b. Log attached to (select one)	
<input type="checkbox"/> (1) Form L-1 (this form). If the company/lease name on log is different from that shown in Section I, please enter here: _____	
Check here if attached log is being submitted after being held confidential <input type="checkbox"/>	
<input type="checkbox"/> (2) Form P-7, Application for Discovery Allowable and New Field Designation.	
<input type="checkbox"/> (3) Form W-4, Application for Multiple Completion: lease or ID no.(s) _____, well no.(s) _____	

RECEIVED
R. R. C. OF TEXAS
MAR 1 1988
OIL & GAS
SAN ANGELO, TEXAS

Alan W. Meeks

signature

ALAN W. MEEKS

name (print)

VICE PRESIDENT

title

(918) 494-6055

phone

2-26-88

date

For Railroad Commission use only

7C-104 104604

READ INSTRUCTIONS ON BACK

GAS WELL
CLASSIFICATION REPORT

Form G-5

Rev. 01/01/86

RECEIVED
R.R.C. OF TEXAS
MAR 1 1988
OIL & GAS
SAN ANGELO, TEXAS

1. OPERATOR NAME (Exactly as shown on Form P-5 Organization Report) QUESTA OIL & GAS CO.		3. RRC DISTRICT NO. 7C	4. OIL LEASE NO. OR GAS WELL ID NO. --126504
2. MAILING ADDRESS 7010 South Yale, STE. 200 Tulsa, OK 74136		5. WELL NO. 1	6. API NO. 42-413-31656
8. FIELD NAME (as per RRC Records) University 54 (Ellenburger)		7. COUNTY OF WELL SITE Schleicher	
10. LOCATION (Section, Block, and Survey) Sec. 23, Blk 53, University Lands		9. LEASE NAME University "23"	
11. PIPELINE CONNECTION OR USE OF GAS Enerfin			

<p>I. PRODUCTION TEST AT RATE ELECTED BY OPERATOR (data on 24-hour basis)</p> <p>A. Date of Test <u>2-9-88</u></p> <p>B. Gas Volume <u>874</u> (Mcf)</p> <p>C. Oil or Condensate Volume <u>9.2</u> (Bbl)</p> <p>D. Water Volume <u>21.6</u> (Bbl)</p> <p>E. Gas/Liquid Hydrocarbon Ratio <u>95,000</u> (Cf/Bbl)</p> <p>F. Flowing Tubing Pressure <u>740</u> (psia)</p> <p>G. Choke Size <u>14/64</u> (in.)</p> <p>H. Casing Pressure <u>855</u> (psia)</p> <p>I. Shut-in Wellhead Pressure-- Tubing <u>2152.2</u> (psia)</p> <p>J. Separator Operating Pressure _____ (psia)</p> <p>K. Color of Stock Tank Liquid <u>Light Carmel</u></p> <p>L. Gravity of Separator Liquid <u>64.0</u> °API</p> <p>M. Gravity of Stock Tank Liquid _____ °API</p> <p>N. Specific Gravity of the Gas (Air = 1) <u>.700</u></p>	<p>II. A.S.T.M. DISTILLATION OF LIQUID SAMPLE. Distillation test is required for gas wells ONLY if the producing gas-liquid hydrocarbon ratio is less than 100,000 CF/barrel.</p> <p>Date Liquid Sample Obtained <u>2-9-88</u></p> <table style="width:100%;"> <tr> <td colspan="2">Where Obtained: <input checked="" type="checkbox"/> Separator</td> <td colspan="2"><input type="checkbox"/> Stock Tank</td> </tr> <tr> <td>% Over</td> <td>Temp. (deg. F)</td> <td>% Over</td> <td>Temp. (deg. F)</td> </tr> <tr> <td>Initial Boiling Temp.</td> <td><u>82</u></td> <td>60</td> <td><u>292</u></td> </tr> <tr> <td>10</td> <td><u>124</u></td> <td>70</td> <td><u>364</u></td> </tr> <tr> <td>20</td> <td><u>158</u></td> <td>80</td> <td><u>486</u></td> </tr> <tr> <td>30</td> <td><u>188</u></td> <td>90</td> <td><u>642</u></td> </tr> <tr> <td>40</td> <td><u>218</u></td> <td>95</td> <td>_____</td> </tr> <tr> <td>50</td> <td><u>252</u></td> <td>End Point</td> <td><u>648</u></td> </tr> </table> <p>Total Recovery <u>90</u> percent</p> <p>Residue <u>1</u> percent</p> <p>Loss <u>9</u> percent</p>	Where Obtained: <input checked="" type="checkbox"/> Separator		<input type="checkbox"/> Stock Tank		% Over	Temp. (deg. F)	% Over	Temp. (deg. F)	Initial Boiling Temp.	<u>82</u>	60	<u>292</u>	10	<u>124</u>	70	<u>364</u>	20	<u>158</u>	80	<u>486</u>	30	<u>188</u>	90	<u>642</u>	40	<u>218</u>	95	_____	50	<u>252</u>	End Point	<u>648</u>
Where Obtained: <input checked="" type="checkbox"/> Separator		<input type="checkbox"/> Stock Tank																															
% Over	Temp. (deg. F)	% Over	Temp. (deg. F)																														
Initial Boiling Temp.	<u>82</u>	60	<u>292</u>																														
10	<u>124</u>	70	<u>364</u>																														
20	<u>158</u>	80	<u>486</u>																														
30	<u>188</u>	90	<u>642</u>																														
40	<u>218</u>	95	_____																														
50	<u>252</u>	End Point	<u>648</u>																														

<p>I declare under penalties prescribed in Sec. 91.143, Texas Natural Resources Code, that I am authorized to make this report, that this report was prepared by me or under my supervision and direction, and that data and facts stated therein are true, correct, and complete to the best of my knowledge.</p> <p style="text-align: right;">C. Allen Well Testing Inc. NAME (Type or Print)</p> <p style="text-align: right;"><i>Douglas E. Bell</i> SIGNATURE</p> <p style="text-align: right;">_____ TITLE</p> <p style="text-align: right;">2-26-88 DATE</p> <p style="text-align: right;">_____ CONTACT PERSON</p> <p style="text-align: right;">_____ PHONE NUMBER</p>	<p>RRC USE ONLY</p>
--	----------------------------

7C-10# 126504

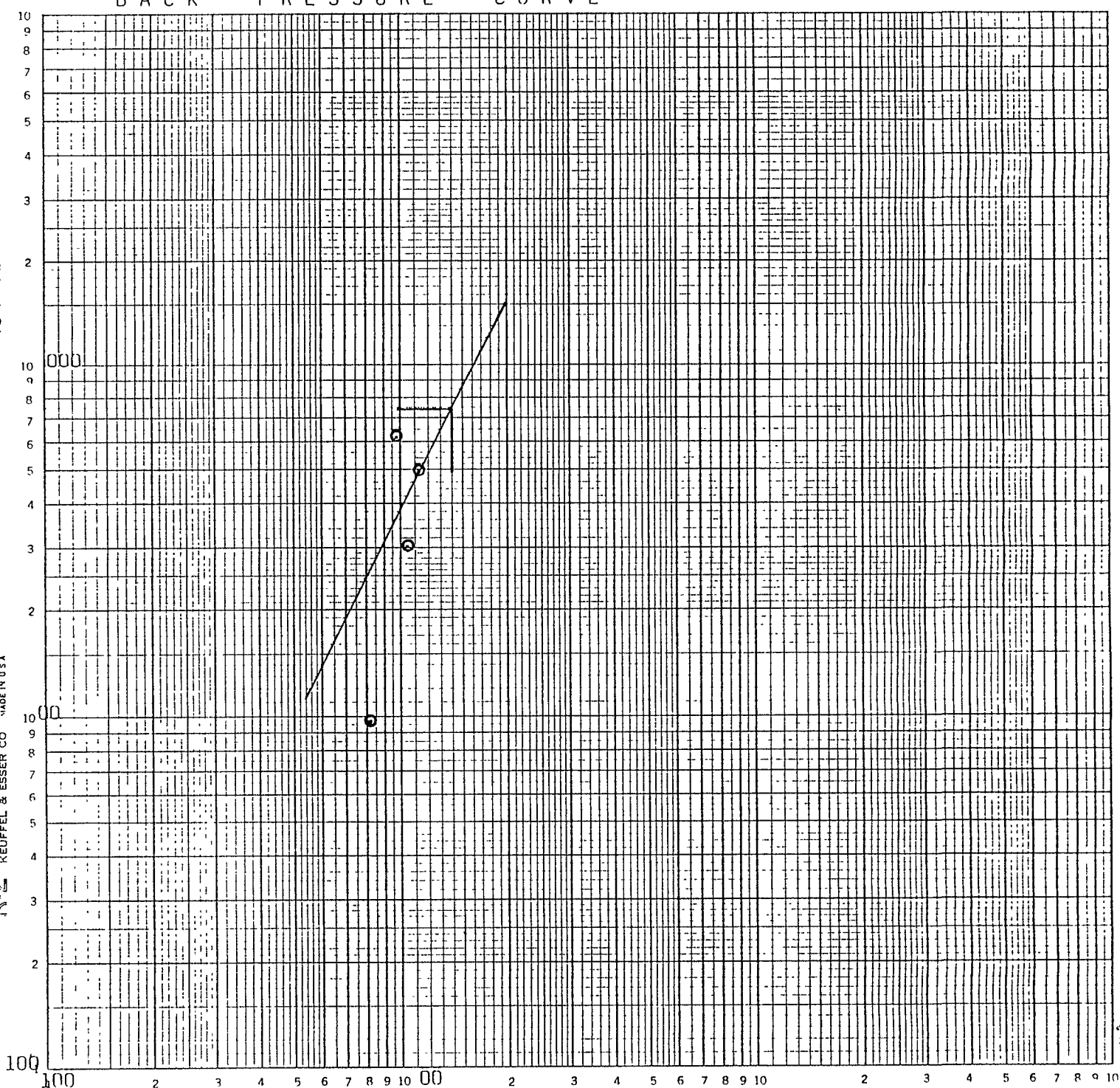
COMPANY QUESTA OIL & GAS CO.
 LEASE UNIVERSITY 23-1
 COUNTY SCHLEICHER STATE TEXAS
 DATE 2-9-88

126504

BACK PRESSURE CURVE

$P_f^2 - P_s^2$ (THOUSANDS)
46 7402

LOGARITHMIC 3 X 3 CYCLES
KEUFFEL & ESSER CO. MADE IN U.S.A.



$\theta = 63\frac{1}{2}^\circ$
 $n = .499$
 AOF = 1,400 MCF/Day

Q in MCF per DAY

RECEIVED
R. R. C. OF TEXAS
 MAR 1 1988
 OIL & GAS
 SAN ANGELO, TEXAS

7C-10#126504

hc
has

STATEMENT OF PRODUCTIVITY OF ACREAGE
ASSIGNED TO PRORATION UNITS

Form P-15
(5-5-71)

The undersigned states that he is authorized to make this statement; that he has knowledge of the facts concerning the Questa Oil & Gas Co. OPERATOR, University "23" #126504 LEASE, No. 1 WELL; that such well is completed in the University 54 (Ellenberger) Field, Schleicher County, Texas and that the acreage claimed, and assigned to such well for proration purposes as authorized by special rule and as shown on the attached certified plat embraces 40 acres which can reasonably be considered to be productive of hydrocarbons.

- CERTIFICATE -

I declare under penalties prescribed in Sec. 91.143, Texas Natural Resources Code, that I am authorized to make this report, that this report was prepared by me or under my supervision and direction, and that data and facts stated therein are true, correct, and complete, to the best of my knowledge.

Date March 7, 1988 Signature Alan W. Mueks

Telephone 918 494-6055 Title Vice President
AREA CODE

RECEIVED
R. R. C. OF TEXAS
MAR 10 1988
OIL & GAS
SAN ANGELO, TEXAS

PLEASE READ ALL INSTRUCTIONS

The information requested is essential in order for this agency to provide an appropriate response. Please allow for receipt of this form in our offices at least one week before your operation begins. Due to the volume of these requests, it is difficult for us to handle telephone inquiries, and such only serve to delay the processing of these forms. Complete, keep the bottom sheet (yellow) for your files, and mail the top 4 sheets of this 5-sheet set of carbon-backed forms to the address below, 1 of them will be returned to you bearing our response and others will be sent to the Austin and appropriate district office of the Railroad Commission

Surface Casing
Texas Water Commission
P.O. Box 13087, Capitol Station
Austin, Texas 78711 (Phone: 512/463-8003)

Date 11-25-87

TWC File No.: SC-

2276

Alan W. Weeks
Name of person preparing this request & Telephone No w/AC

Questa Oil & Gas Co.
Company (operator's name as on RRC form W-1)
7010 S. Yale, Suite 200

Mailing Address
Tulsa, OK 74136
City and State Zip Code

Do not write in this space

#6
#420 BSK est 600
RNN

DO area

COUNTY <u>Schleicher</u>	Survey Name & No. <u>University Lands</u>
Block No. <u>53</u>	Township _____ Section <u>23</u> (or) Lot No. _____
Abstract No. A- _____	LEASE Name <u>University "23"</u> Well No. <u>1</u>
THE ABOVE INFORMATION IN THIS BLOCK MUST BE COMPLETE AND CORRECT!!!	
RRC Lease No. _____	RRC Dist. No. <u>7-C</u>

Distances, in feet, and directions measured at right angles from each of two intersecting Section or Survey lines
(NOT LEASE LINES) 660 feet from south line and 660 feet from west line

ALWAYS attach a map showing all surrounding SURVEYS and your well site.

Distance (in miles) and direction from a nearby town in this County (name the town). 20.8 miles north of Eldorado, Texas

Elevation (if avail) 2552' Proposed Total Depth 7900' Geologic Fm. at T.D. Ellenberger

Purpose of the Request: ☒ New Drill ☐ Re-entry ☐ Plug & Abd. ☐ Other (specify) _____

Is this an amended request? ☐ YES ☒ NO If 'yes', give previous File No. for this well. SC- _____

Additional data (check if attached):

Log of same or nearby well _____ (The applicable type of well log of a nearby well that shows the aquifers.)

ALWAYS attach the electric log of any well that is to be reentered.

Additional remarks: _____

The TEXAS WATER COMMISSION'S recommendation for the protection of usable-quality ground water at the referenced location is as follows:

CO-SCHLEI, SUR-UL, BLK-53, SEC-23, LSE-UNIVERSITY "23", #6,4/600; THE ELECTRIC

The interval from the land surface to 20 feet below the base of the Cretaceous-age beds must be protected. The base of the Cretaceous is estimated to occur at a depth of 600 feet.

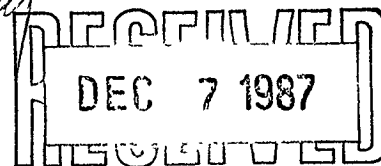
Please send THE ELECTRIC log of this well when it is available.

RECEIVED
R. R. C. OF TEXAS

MAR 1 1988

OIL & GAS
SAN ANGELO, TEXAS

Date December 4, 1987
typed by TWC



Very truly yours,

R. N. Webster
R. N. Webster

Geologist, Surface Casing, TWC

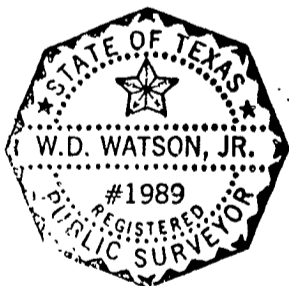
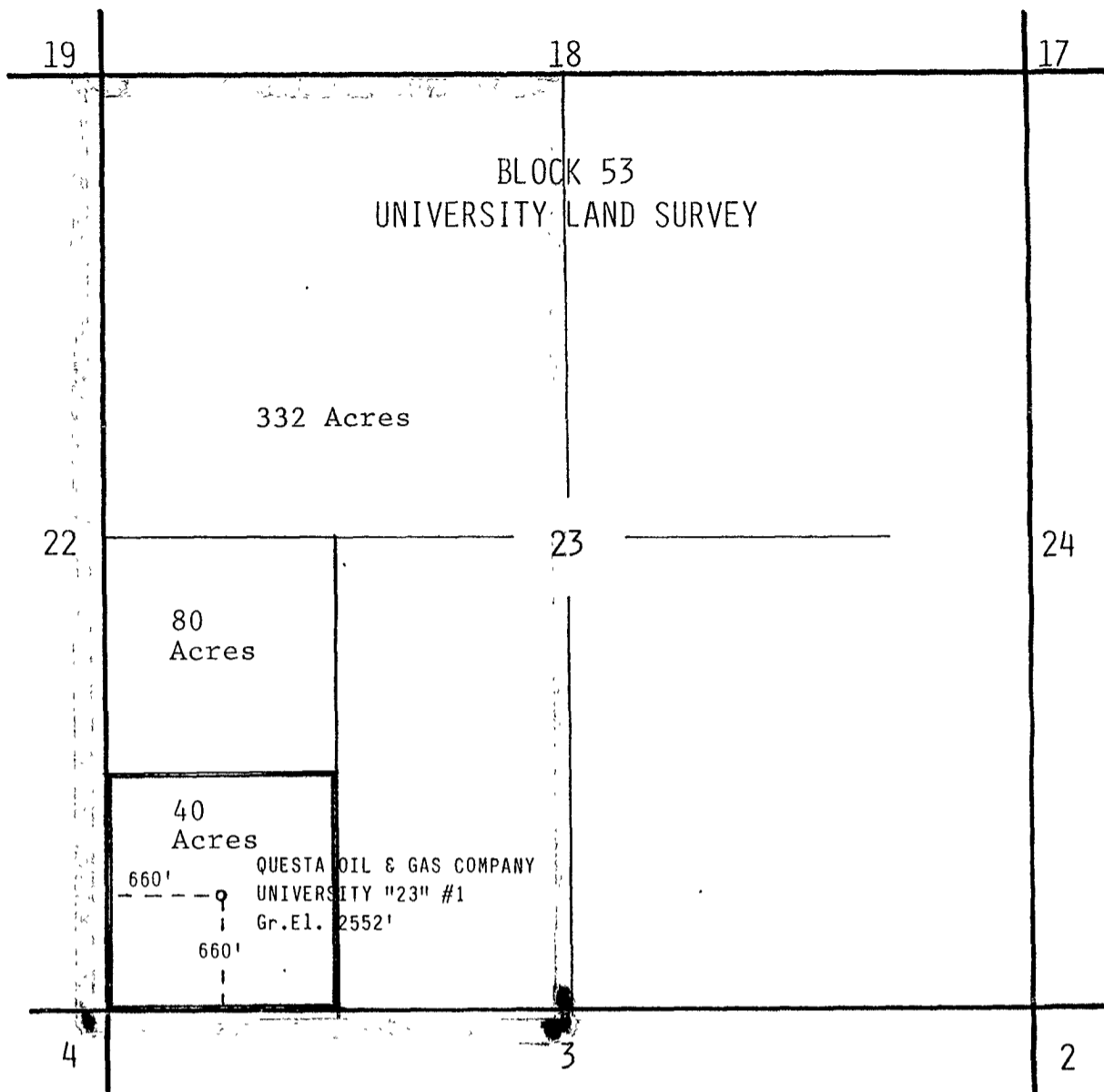
NOTE: The depth to which we recommend that usable-quality water strata should be protected is intended to apply only to the subject well and not for area-wide use. Approval of the well-completion methods for protection of this ground water falls under the jurisdiction of the Railroad Commission of Texas. This recommendation is intended for normal drilling, production, and plugging operations only and does not apply to salt water disposal operations into a nonproductive zone (RRC Form W-14).

Fold

TYPE OR PRINT IN INK

Fold

DO NOT WRITE HERE
FOR TWC USE ONLY



SCALE 1" = 1000' APPROXIMATELY 20.8 MILES NORTH OF ELDORADO, TEXAS

I HEREBY CERTIFY THAT THE WELL LOCATION SHOWN ON THIS PLAT WAS PLOTTED FROM FIELD NOTES OF ACTUAL SURVEYS MADE BY ME OR UNDER MY SUPERVISION AND THAT THE SAME IS TRUE AND CORRECT TO THE BEST OF MY KNOWLEDGE AND BELIEF

DATE SURVEYED NOVEMBER 20, 1987
CERTIFICATE NO. 1989

WATSON AND ASSOCIATES OF MIDLAND, INC

**CONSULTING ENGINEERS
LAND SURVEYORS**
P.O. BOX 11188
Midland, Texas
915 / 587-3101

JOB # ROLL 17A
TOPO 156/1
FIELD BOOK

LOCATION PLAT

QUESTA OIL & GAS COMPANY
UNIVERSITY "23" #1
660' FSL & 660' FWL
SECTION 23, BLOCK 53
UNIVERSITY LAND SURVEY
SCHLEICHER COUNTY, TEXAS

