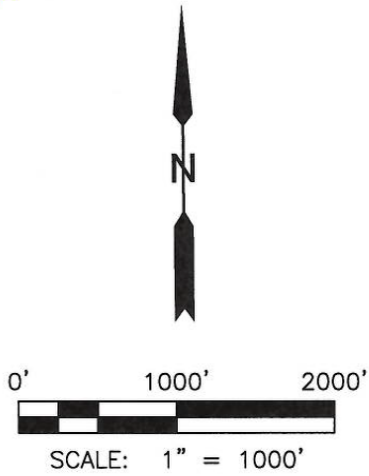
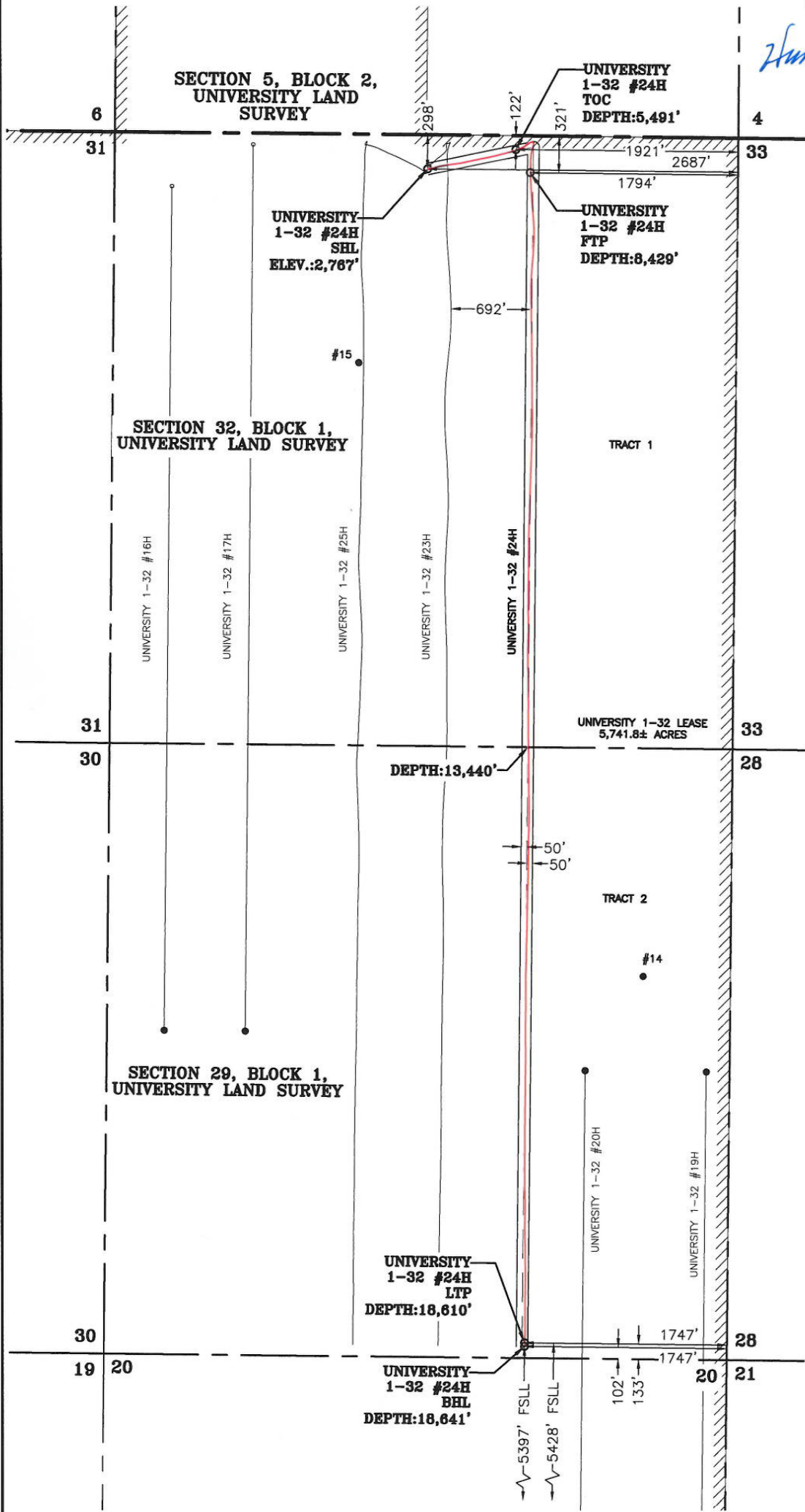


UNIVERSITY 1-32 #24H	EASTING (X) (NAD 27)	NORTHING (Y) (NAD 27)	LATITUDE (NAD 27)	LONGITUDE (NAD 27)	SECTION LINE		SECTION LINE		LEASE LINE		LEASE LINE		SECTION
					FOOTAGE	FNL\FSL	FOOTAGE	FEL\FWL	FOOTAGE	FNL\FSL	FOOTAGE	FEL\FWL	
SURFACE HOLE LOCATION (SHL)	1558013.8	565973.1	31.215159	-101.747277	298'	FNL	2687'	FEL	298'	FNL	2687'	FEL	32
TOP OF CLEARFORK (TOC)	1558783.1	566132.6	31.215625	-101.744822	122'	FNL	1921'	FEL	122'	FNL	1921'	FEL	32
FIRST TAKE POINT (FTP)	1558905.5	565930.8	31.215074	-101.744423	321'	FNL	1794'	FEL	321'	FNL	1794'	FEL	32
LAST TAKE POINT (LTP)	1558745.4	555783.1	31.187170	-101.744523	133'	FSL	1747'	FEL	5428'	FSL	1747'	FEL	29
BOTTOM HOLE LOCATION (BHL)	1558745.0	555752.1	31.187084	-101.744523	102'	FSL	1747'	FEL	5397'	FSL	1747'	FEL	29

UNIVERSITY 1-32 #24H	LENGTH
Tract 1	5011'
Tract 2	5170'
TOTAL PRODUCTIVE LATERAL LENGTH	10181'



Hunter Wade Wills
12-14-2021



NOTE: WELL IS LOCATED APPROXIMATELY 17.1 MILES WEST OF BIG LAKE, REAGAN COUNTY, TEXAS

HALFF
3300 NORTH A STREET, BUILDING 2, SUITE 120
MIDLAND, TX 79705-5471
TEL (432) 253-3255
TBPELS SURVEYING FIRM #10193998

DATE: 12/7/2021
BY: K. RIOS
AVO: 39678.752

LEGEND

- SECTION LINE
- BLOCK/TOWNSHIP LINE
- LEASE LINE
- SUBJECT LATERAL
- AS-DRILLED LATERAL
- PERMITTED LATERAL
- PROPOSED LATERAL
- PROPOSED WELL
- EXISTING WELL

NOTES:

- THE BASIS OF BEARING OF THE SURVEY IS THE TEXAS COORDINATE SYSTEM, NORTH AMERICAN DATUM 1927 (NAD 27), CENTRAL ZONE (4203).
- ALL TEXAS STATE PLANE COORDINATES AND GEOGRAPHIC COORDINATES SHOWN HEREON ARE NAD 27 GRID COORDINATES AS COMPUTED BY CORPSCON VERSION 6.0.1. ALL GEOGRAPHIC COORDINATES SHOWN HEREON WERE CONVERTED USING CORPSCON VERSION 6.0.1. UNLESS OTHERWISE NOTED, ALL DISTANCES SHOWN HEREON ARE GRID DISTANCES AND THEY CAN BE CONVERTED TO SURFACE WHEN MULTIPLIED WITH A "SURFACE ADJUSTMENT FACTOR" OF 1.000207698, AS CALCULATED BY CORPSCON.
- ELEVATIONS SHOWN HEREON ARE NAVD88 AS DERIVED BY GPS.
- THIS EXHIBIT IS FOR TEXAS RAILROAD COMMISSION WELL PERMITTING PURPOSES ONLY. BOUNDARY LINES AND ACREAGE SHOWN HEREON REFLECT THE SURVEYORS PROFESSIONAL OPINION OF MINERAL RIGHTS AS DETERMINED FROM CLIENT-PROVIDED OIL AND GAS MINERAL LEASE DOCUMENTATION. THE INFORMATION DEPICTED HEREON SHALL NOT BE USED IN THE CONVEYANCE OF FEE TITLE TO REAL PROPERTY.
- ALL MEASUREMENTS TO LEASE, UNIT, AND SURVEY LINES ARE PERPENDICULAR TO SAID LINES.
- THIS SURVEY WAS PREPARED WITHOUT THE BENEFIT OF A TITLE REPORT.
- THE AS-DRILLED DATA USED TO DEPICT THE WELL BORE PATH WAS PROVIDED BY OTHERS. NO WARRANTY IS EITHER EXPRESSED OR IMPLIED AS TO THE ACCURACY OF THE INFORMATION HEREIN.

PIONEER NATURAL RESOURCES USA, INC.

FINAL AS-DRILLED PLAT

UNIVERSITY 1-32 #24H

UNIVERSITY 1-32 LEASE-5,741.8± ACRES
TOTAL TRACT: 5,741.8± ACRES
(SURFACE AREA)

LOCATED IN:

SECTIONS 29 & 32, BLOCK 1,
UNIVERSITY LAND SURVEY,
REAGAN COUNTY, TEXAS