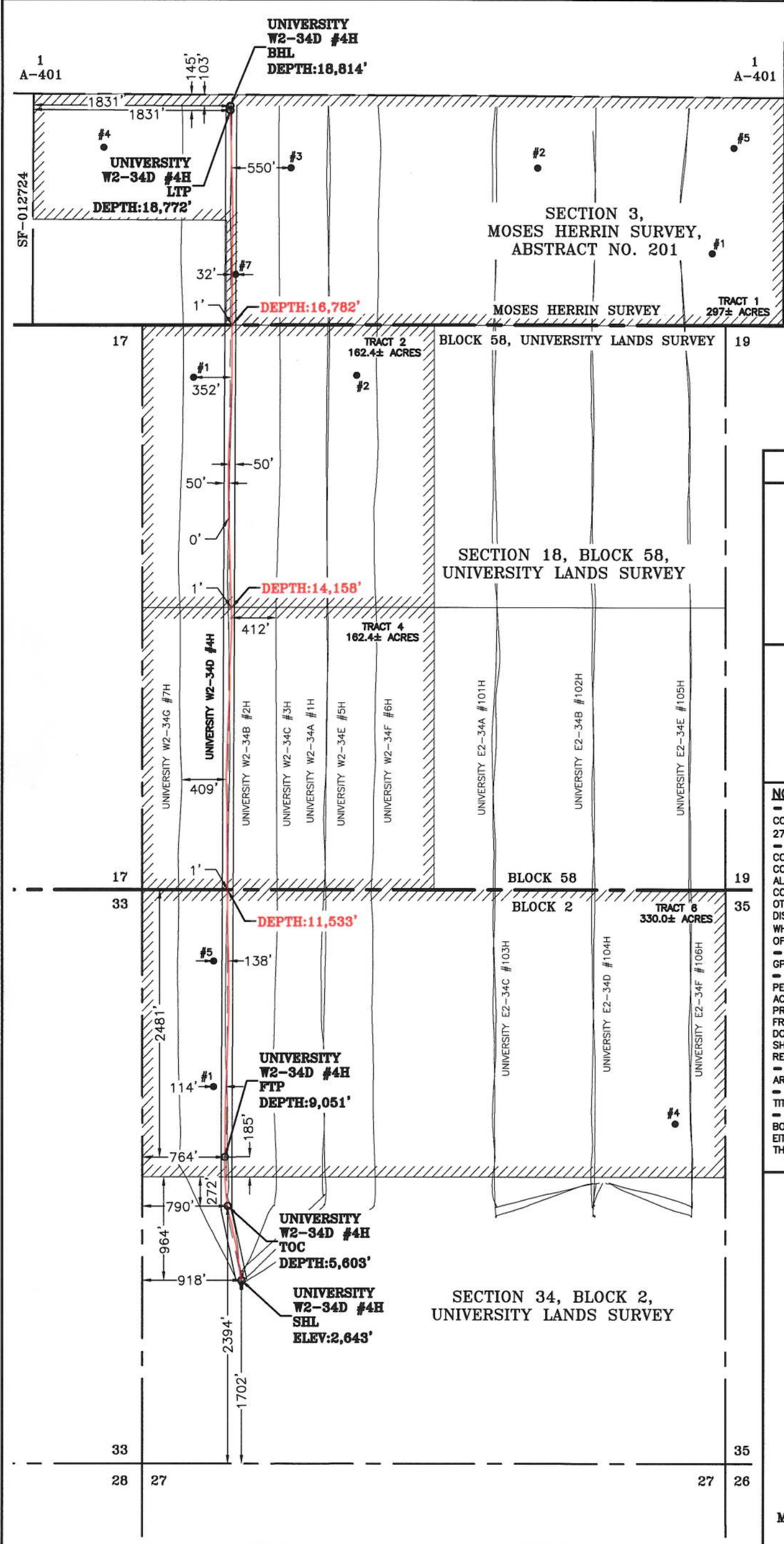
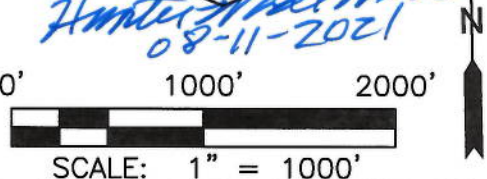
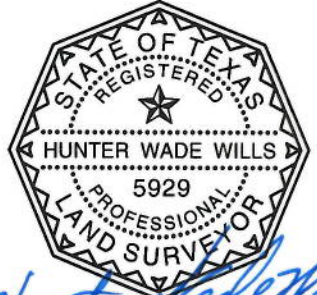


UNIVERSITY W2-34D #4H	EASTING (X) (NAD 27)	NORTHING (Y) (NAD 27)	LATITUDE (NAD 27)	LONGITUDE (NAD 27)	SECTION LINE		SECTION LINE		LEASE LINE		LEASE LINE		SECTION
					FOOTAGE	FNL/FSL	FOOTAGE	FEL\FWL	FOOTAGE	FNL/FSL	FOOTAGE	FEL\FWL	
SURFACE HOLE LOCATION (SHL)	1567598.9	594410.1	31.293671	-101.717749	1702'	FSL	918'	FWL	964'	FNL	918'	FWL	34
TOP OF CLEARFORK (TOC)	1567484.9	595104.6	31.295576	-101.718141	2394'	FSL	790'	FWL	272'	FNL	790'	FWL	34
FIRST TAKE POINT (FTP)	1567468.6	595561.9	31.296833	-101.718212	2481'	FNL	764'	FWL	185'	FSL	764'	FWL	34
LAST TAKE POINT (LTP)	1567713.8	605275.5	31.323546	-101.717814	145'	FNL	1831'	FWL	145'	FNL	1831'	FWL	3
BOTTOM HOLE LOCATION (BHL)	1567714.0	605317.5	31.323662	-101.717815	103'	FNL	1831'	FWL	103'	FNL	1831'	FWL	3



UNIVERSITY W2-34D #4H	LENGTH
TRACT 6	2482'
TRACT 4	2625'
TRACT 2	2624'
TRACT 1	1990'
TOTAL PRODUCTIVE LATERAL LENGTH	9721'



NOTE: WELL IS LOCATED APPROXIMATELY 11.9 MILES
SOUTHWEST OF STILES, REAGAN COUNTY, TEXAS

HALFF®
3300 NORTH A STREET, BUILDING 2, SUITE 120
MIDLAND, TX 79705-5471
TEL (432) 253-3255
TBPELS SURVEYING FIRM #10193998

DATE: 8/10/2021
BY: K. NYRKANEN
AVO: 039678.457

- LEGEND**
- SECTION LINE
 - BLOCK/TOWNSHIP LINE
 - LEASE LINE
 - SUBJECT LATERAL
 - AS-DRILLED LATERAL
 - PERMITTED LATERAL
 - PROPOSED LATERAL
 - PROPOSED WELL
 - EXISTING WELL

NOTES:

- THE BASIS OF BEARING OF THE SURVEY IS THE TEXAS COORDINATE SYSTEM, NORTH AMERICAN DATUM 1927 (NAD 27), CENTRAL ZONE (4203).
- ALL TEXAS STATE PLANE COORDINATES AND GEOGRAPHIC COORDINATES SHOWN HEREON ARE NAD 27 GRID COORDINATES AS COMPUTED BY CORPSCON VERSION 6.0.1. ALL GEOGRAPHIC COORDINATES SHOWN HEREON WERE CONVERTED USING CORPSCON VERSION 6.0.1. UNLESS OTHERWISE NOTED, ALL DISTANCES SHOWN HEREON ARE GRID DISTANCES AND THEY CAN BE CONVERTED TO SURFACE WHEN MULTIPLIED WITH A "SURFACE ADJUSTMENT FACTOR" OF 1.000207698, AS CALCULATED BY CORPSCON.
- ELEVATIONS SHOWN HEREON ARE NAVD88 AS DERIVED BY GPS.
- THIS EXHIBIT IS FOR TEXAS RAILROAD COMMISSION WELL PERMITTING PURPOSES ONLY. BOUNDARY LINES AND ACREAGE SHOWN HEREON REFLECT THE SURVEYORS PROFESSIONAL OPINION OF MINERAL RIGHTS AS DETERMINED FROM CLIENT-PROVIDED OIL AND GAS MINERAL LEASE DOCUMENTATION. THE INFORMATION DEPICTED HEREON SHALL NOT BE USED IN THE CONVEYANCE OF FEE TITLE TO REAL PROPERTY.
- ALL MEASUREMENTS TO LEASE, UNIT, AND SURVEY LINES ARE PERPENDICULAR TO SAID LINES.
- THIS SURVEY WAS PREPARED WITHOUT THE BENEFIT OF A TITLE REPORT.
- THE AS-DRILLED DATA USED TO DEPICT THE WELL BORE PATH WAS PROVIDED BY OTHERS. NO WARRANTY IS EITHER EXPRESSED OR IMPLIED AS TO THE ACCURACY OF THE INFORMATION HEREIN.

**PIONEER NATURAL RESOURCES
USA, INC.**

FINAL AS-DRILLED PLAT

UNIVERSITY W2-34D #4H

TRACT 6 - 330.0± ACRES
TRACT 4 - 162.4± ACRES
TRACT 2 - 162.4± ACRES
TRACT 1 - 297± ACRES

**TOTAL TRACT: 951.8± ACRES
(SURFACE AREA)**

LOCATED IN:
SECTION 34, BLOCK 2,
UNIVERSITY LANDS SURVEY,
SECTION 18, BLOCK 58,
UNIVERSITY LANDS SURVEY,
&
SECTION 3,
MOSES HERRIN SURVEY, ABSTRACT NO. 201,
REAGAN COUNTY, TEXAS