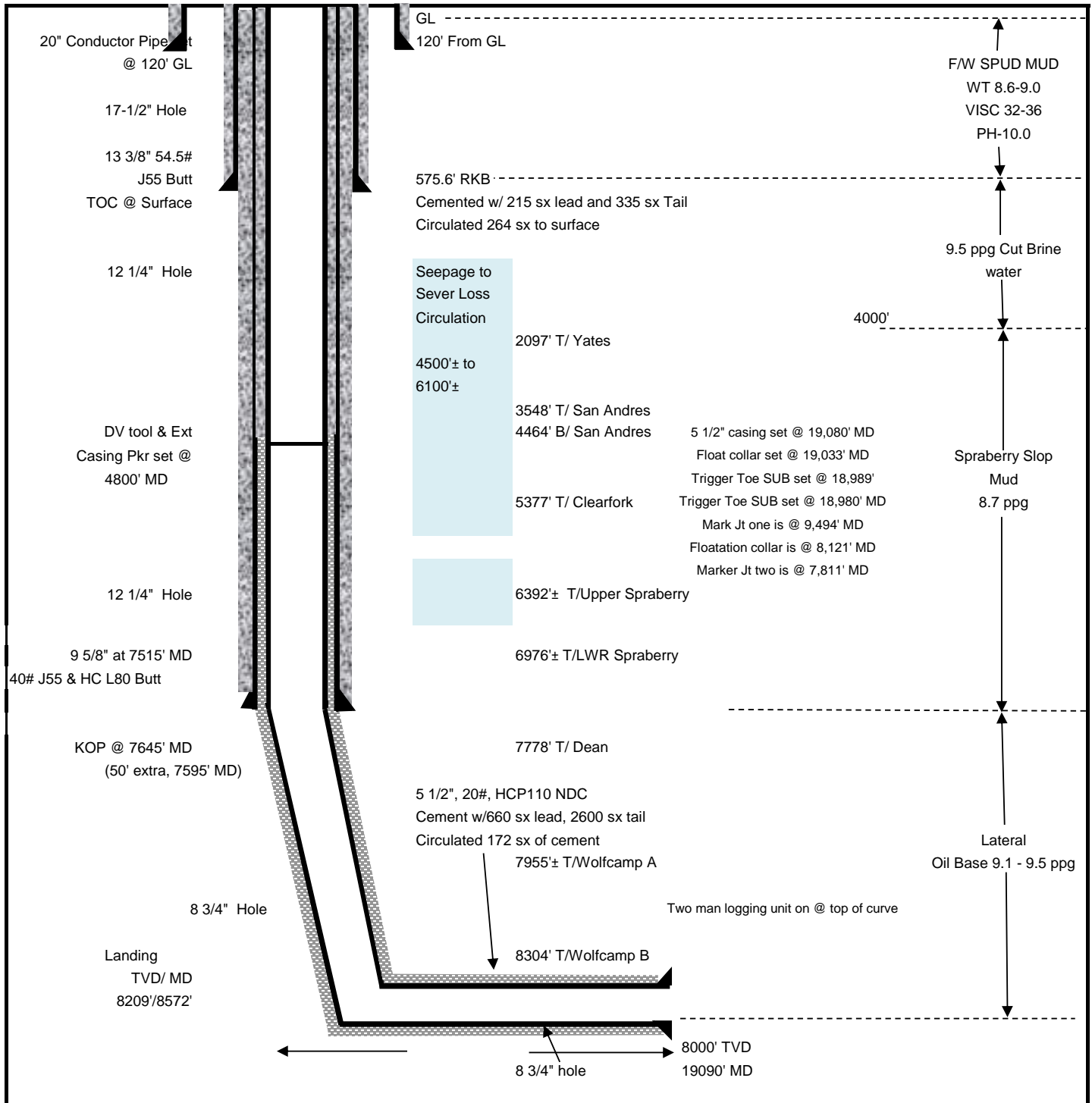


# UNIVERSITY 9C 3601WA

## Reagan County



FIELD:			Lease Name: University 9C 3601WA		
LOCATION: University Sec 36 Blk 2, UL			Elevation:		
COUNTY: Reagan County, Tx			Proposed Pilot hole TD :		
BHL: Sec 24, Blk 2 UL			Proposed Horizontal Hole: 8210' TVD, 19132' MD, Az		
Angle @ KOP and depth: 0 deg		KOP TVD: 7595'	Build Rate: 10°/100', Max Angle: 90 deg, Horizontal Displacement: '		
Drilling Permt: API #: 42-383-40842		BHL closure:			
Drilling Company & Rig: ICD 306		AFE # B20012	Approved By:		
Prepared by: LG		Last Revision Date: January 28, 2020		Approval Date:	