



RAILROAD COMMISSION OF TEXAS

Form W-2

1701 N. Congress
P.O. Box 12967
Austin, Texas 78701-2967

Status: Submitted
Date: 01/12/2022
Tracking No.: 261307

OIL WELL POTENTIAL TEST, COMPLETION OR RECOMPLETION REPORT,

OPERATOR INFORMATION			
Operator	FDL OPERATING, LLC	Operator	263924
Operator	ATTN ROBIN SWANNER PO BOX 472 JUDSON, TX 75660-0000		

WELL INFORMATION			
API	42-383-40689	County:	REAGAN
Well No.:	3513HK	RRC District	7C
Lease	UNIVERSITY 10	Field	LIN (WOLFCAMP)
RRC Lease	17844	Field No.:	53613750
Location	Section: 35, Block: 10, Survey: UL, Abstract: U241		
Latitude		Longitud	
This well is	4.94	miles in a	NW
direction from	BIG LAKE,		
which is the nearest town in the			

FILING INFORMATION			
Purpose of	Initial Potential		
Type of	Other/Recompletion		
Well Type:	Producing	Completion or Recompletion	10/03/2021
Type of Permit	Date	Permit No.	
Permit to Drill, Plug Back, or	06/26/2019	854556	
Rule 37 Exception			
Fluid Injection			
O&G Waste Disposal			
Other:			

COMPLETION INFORMATION			
Spud	07/07/2019	Date of first production after rig	10/03/2021
Date plug back, deepening, drilling operation	08/12/2021	Date plug back, deepening, recompletion, drilling operation	09/23/2021
Number of producing wells on this lease this field (reservoir) including this	33	Distance to nearest well in lease & reservoir	550.0
Total number of acres in	8391.10	Elevation	2716 GL
Total depth TVD	8347	Total depth MD	24112
Plug back depth TVD		Plug back depth MD	
Was directional survey made other inclination (Form W-	Yes	Rotation time within surface casing Is Cementing Affidavit (Form W-15)	No
Recompletion or	Yes	Multiple	No
Type(s) of electric or other log(s)	Gamma Ray (MWD)		
Electric Log Other Description:			
Location of well, relative to nearest lease of lease on which this well is	166.0 Feet from the	Off Lease :	No
	7891.0 Feet from the	South Line and	
		West Line of the	
		UNIVERSITY 10 Lease.	

FORMER FIELD (WITH RESERVOIR) & GAS ID OR OIL LEASE NO.			
Field & Reservoir	Gas ID or Oil Lease	Well No.	Prior Service Type
PACKET:	N/A		

W2:	N/A		
FOR NEW DRILL OR RE-ENTRY, SURFACE CASING DEPTH DETERMINED BY:			
GAU Groundwater Protection Determination	Depth	1050.0	Date 06/28/2019
SWR 13 Exception	Depth		

INITIAL POTENTIAL TEST DATA FOR NEW COMPLETION OR RECOMPLETION		
Date of	10/05/2021	Production Pumping
Number of hours	24	Choke
Was swab used during this	No	Oil produced prior to
PRODUCTION DURING TEST PERIOD:		
Oil	776.00	Gas 948
Gas - Oil	1221	Flowing Tubing
Water	2819	
CALCULATED 24-HOUR RATE		
Oil	776.0	Gas 948
Oil Gravity - API - 60.:	42.0	Casing
Water	2819	

CASING RECORD											
Ro	Type of Casing	Casing	Hole	Setting	Multi -	Multi -	Cement	Cement	Slurry	Top of	TOC
		Size (in.)	Size	Depth	Stage Tool	Stage Shoe	Class	Amoun	Volume (cu.	Cement (ft.)	Determined By
1	Surface	13 3/8	17 1/2	1119			C	1141	2203.0	530	Calculation
2	Intermediate	9 5/8	12 1/2	7703			C	940	2974.0	0	Circulated to Surface
3	Conventional Production	5 1/2	8 3/4	24112			C	4395	6836.0	0	Circulated to Surface

LINER RECORD									
<u>Ro</u>	<u>Liner Size</u>	<u>Hole Size</u>	<u>Liner Top</u>	<u>Liner Bottom</u>	<u>Cement Class</u>	<u>Cement Amoun</u>	<u>Slurry Volume (cu.)</u>	<u>Top of Cement (ft.)</u>	<u>TOC Determined</u>
N/A									

TUBING RECORD			
<u>Ro</u>	<u>Size (in.)</u>	<u>Depth</u>	<u>Size (ft.)</u>
1	2 7/8	8149	
			<u>Packer Depth (ft.)/Type</u>
			8141 /

PRODUCING/INJECTION/DISPOSAL INTERVAL			
<u>Ro</u>	<u>Open hole?</u>	<u>From (ft.)</u>	<u>To (ft.)</u>
1	No	L1 8657	23915.0

ACID, FRACTURE, CEMENT SQUEEZE, CAST IRON BRIDGE PLUG, RETAINER, ETC.			
Was hydraulic fracturing treatment	Yes		
Is well equipped with a downhole sleeve?	No	If yes, actuation pressure	
Production casing test pressure (PSIG)		Actual maximum pressure (PSIG) during	
hydraulic fracturing	9500	fracturin	8518
Has the hydraulic fracturing fluid disclosure been	Yes		
<u>Ro</u>	<u>Type of Operation</u>	<u>Amount and Kind of Material Used</u>	<u>Depth Interval (ft.)</u>

FORMATION RECORD

Formations	Encountere	Depth TVD	Depth MD	Is formation	Remarks
GRAYBURG	Yes	2929.0	2940.0	Yes	
QUEEN	Yes	2709.0	2720.0	Yes	ESTIMATED
SAN ANDRES - SALTWATER FLOW, POSSIBLY HEAVY	Yes	3227.0	3240.0	Yes	
CLEARFORK	Yes	4078.0	4108.0	Yes	ESTIMATED
SPRABERRY	Yes	5929.0	5958.0	Yes	
JO-MILL	Yes	6848.0	6879.0	Yes	
DEAN	Yes	7336.0	7367.0	Yes	
TOP WOLFCAMP	Yes	7501.0	7532.0	Yes	
STRAWN	No			No	NOT DRILLED TO DEPTH
FUSSELMAN	No			No	NOT DRILLED TO DEPTH
ELLENBURGER	No			No	NOT DRILLED TO DEPTH

Do the producing interval of this well produce H2S with a concentration in excess of 100 ppm

No

Is the completion being downhole commingled

No

REMARKS

SEE DOCKET 7C-0322376 FOR FIELD TRANSFER

RRC REMARKS

PUBLIC COMMENTS:

[RRC Staff 2022-02-10 13:35:45.608] EDL=15250 feet, max acres=580, LIN (WOLFCAMP) oil or gas well;

take points: 8657-23915 feet

CASING RECORD :

TUBING RECORD:

PRODUCING/INJECTION/DISPOSAL INTERVAL :

ACID, FRACTURE, CEMENT SQUEEZE, CAST IRON BRIDGE PLUG, RETAINER, ETC. :

POTENTIAL TEST DATA:

OPERATOR'S CERTIFICATION

Printed	Robin Swanner	Title:	Consulting Agent
Telephone	(903) 930-1532	Date	01/12/2022

**RAILROAD COMMISSION OF TEXAS**

1701 N. Congress

P.O. Box 12967

Austin, Texas 78701-2967

Form W-15

Rev. 08/2014

CEMENTING REPORT

Cementer: Fill in shade areas.

Operator: Fill in other items.

OPERATOR INFORMATION

Sable Permian Resources LLC	Operator P-5 No.: 745521
Cementer Name: Crest Pumping Technologies	Cementer P-5 No.: 189898

WELL INFORMATION

District No.: 07C	County: Reagan	
Well No.: 13HK	API No.: 383-40689	Drilling Permit No.: 854556
Lease Name: University 10 35-23	Lease No.:	
Field Name: LIN (WOLFCAMP)	Field No.: 53613750	

I. CASING CEMENTING DATA

Type of casing: <input type="checkbox"/> Conductor <input checked="" type="checkbox"/> Surface <input type="checkbox"/> Intermediate <input type="checkbox"/> Liner <input type="checkbox"/> Production		
Drilled hole size (in.): 17 1/2	Depth of drilled hole (ft.): 119	Est. % wash-out or hole enlargement: 20
Size of casing in O.D. (in.): 13 3/8	Casing weight (lbs/ft) and grade: 54.50# J-55	No. of centralizers used: 7
Was cement circulated to ground surface (or bottom of cellar) outside casing? <input type="checkbox"/> YES <input checked="" type="checkbox"/> NO If no for surface casing, explain in Remarks.	Setting depth shoe (ft.): 1119	Top of liner (ft.):
Hrs. waiting on cement before drill-out:	Calculated top of cement (ft.): 530	Cementing date: 7/9/2019

SLURRY

Slurry No.	No. of Sacks	Class	Additives	Volume (cu. ft.)	Height (ft.)
1	630	Class C	See Remarks	1,254	1,805
2	285	Class C	See Remarks	499	718
3	226	Class C	See Remarks	450	647
Total	1,141			2,203	3,170

II. CASING CEMENTING DATA

Type of casing: <input type="checkbox"/> Surface <input type="checkbox"/> Intermediate <input type="checkbox"/> Production <input type="checkbox"/> Tapered production <input type="checkbox"/> Multi-stage cement shoe <input type="checkbox"/> Multiple parallel strings		
Drilled hole size (in.):	Depth of drilled hole (ft.):	Est. % wash-out or hole enlargement:
Size of casing in O.D. (in.):	Casing weight (lbs/ft) and grade:	No. of centralizers used:
Tapered string drilled hole size (in.)	Tapered string depth of drilled hole (ft.)	
Upper: Lower:	Upper: Lower:	
Tapered string size of casing in O.D. (in.)	Tapered string casing weight(lbs/ft) and grade	Tapered string no. of centralizers used
Upper: Lower:	Upper: Lower:	Upper: Lower:
Was cement circulated to ground surface (or bottom of cellar) outside casing? <input type="checkbox"/> YES <input type="checkbox"/> NO	Setting depth shoe (ft.):	
Hrs. waiting on cement before drill-out:	Calculated top of cement (ft.):	Cementing date:

SLURRY

Slurry No.	No. of Sacks	Class	Additives	Volume (cu. ft.)	Height (ft.)
1					
2					
3					
Total					

III. CASING CEMENTING DATA

Type of casing: <input type="checkbox"/> Surface <input type="checkbox"/> Intermediate <input type="checkbox"/> Production <input type="checkbox"/> Tapered production <input type="checkbox"/> Multi-stage cement/DV tool <input type="checkbox"/> Multiple parallel strings		
Drilled hole size (in.):	Depth of drilled hole (ft.):	Est. % wash-out or hole enlargement:
Size of casing in O.D. (in.):	Casing weight (lbs/ft) and grade:	No. of centralizers used:
Tapered string drilled hole size (in.)	Tapered string depth of drilled hole (ft.)	
Upper: Lower:	Upper: Lower:	
Tapered string size of casing in O.D. (in.)	Tapered string casing weight(lbs/ft) and grade	Tapered string no. of centralizers used
Upper: Lower:	Upper: Lower:	Upper: Lower:
Was cement circulated to ground surface (or bottom of cellar) outside casing? <input type="checkbox"/> YES <input type="checkbox"/> NO	Setting depth tool (ft.):	
Hrs. waiting on cement before drill-out:	Calculated top of cement (ft.):	Cementing date:

SLURRY

Slurry No.	No. of Sacks	Class	Additives	Volume (cu. ft.)	Height (ft.)
1					
2					
3					
Total					

CEMENTING TO SQUEEZE, PLUG BACK OR PLUG AND ABANDON							
	PLUG #1	PLUG #2	PLUG #3	PLUG #4	PLUG #5	PLUG #6	PLUG #7
Cementing Date							
Size of hole or pipe (in.)							
Depth to bottom of tubing or drill pipe (ft.)							
Cement retainer setting depth (ft.)							
CIBP setting depth (ft.)							
Amount of cement on top of CIBP (ft.)							
Sacks of cement used							
Slurry volume pumped (cu. ft.)							
Calculated top of plug (ft.)							
Measured top of plug, if tagged (ft.)							
Slurry weight (lbs/gal)							
Class/type of cement							
Perforate and squeeze (YES/NO)							

REMARKS

- 1 3 bwow Sodium Chloride, 6% Bentonite Gel, 0.4% CPT-503P, 0.5 lbs/sk Cellophane Flakes
- 2 0.5 lbs/sk Cellophane Flakes
- 3
- 4 Didn't circulate cement to surface. Topped out with 226 sks and got cement to surface

CEMENTER'S CERTIFICATE: I declare under penalties prescribed in Sec. 91.143, Texas Natural Resources Code, that I am authorized to make this certification, that the cementing of casing and/or the placing of cement plugs in this well as shown in the report was performed by me or under my supervision, and that the cementing data and facts presented on both sides of this form are true, correct, and complete, to the best of my knowledge. This certification covers cementing data only.

Zedd Hutson/Cementer

Crest Pumping Technologies

Zedd Hutson

Name and title of cementer's representative

Cementing Company

Signature

P.O. Box 117 Jacksboro, TX 76458

940-567-3392

7/9/2019

Address

City

State, Zip Code

Tel: Area Code

Number

Date: mo. day yr.

OPERATOR'S CERTIFICATE: I declare under penalties prescribed in Sec. 91.143, Texas Natural Resources Code, that I am authorized to make this certification, that I have knowledge of the well data and information presented in this report, and that the data and facts presented on both sides of this form are true, correct, and complete, to the best of my knowledge. This certification covers all well data.

TODD BRODERICK

DRILLING ENGINEER

Todd Broderick

Typed or printed name of operator's representative

Title

Signature

700 MILAM, SUITE 3100 HOUSTON, TX 77002

713-579-8018

Apr 23, 2020

Address

City

State, Zip Code

Tel: Area Code

Number

Date:

Instructions for Form W-15, Cementing Report

NOTICE: The Form W-15 must be submitted as an attachment to a Form G-1 (Gas Well Back Pressure Test, Completion or Recompletion Report, and Log), Form W-2 (Oil Well Potential Test, Completion or Recompletion Report, and Log), Form W-3 (Plugging Record), or Form W-4 (Application for Multiple Completion), any time cement is pumped in a wellbore.

- A. **What to file:** An operator should file an original and one copy of the completed Form W-15 for each cementing company used on a well. The cementing of different casing strings on a well by one cementing company may be reported on one form.
The Form W-15 should be filed with the form W-3, Plugging Record, unless the Form W-3 is signed by the cementing company representative. When reporting dry holes, operators must complete Form W-15, in addition to Form W-3, to show any casing cemented in the hole.
- B. **How to file:** An oil and gas completion report and Form W-15 may be filed online using the Commission's Online System (<https://webapps.rrc.state.tx.us/security/login.do>) or a paper copy of the form may be mailed to the Commission in Austin (P.O. Box 12967, Austin, Texas 78711-2967).
- C. **Surface casing:** An operator must set and cement sufficient surface casing to protect all usable-quality water strata, as defined by the Groundwater Advisory Unit in Austin. Sufficient cement shall be used to fill the annular space outside the casing from the shoe to the ground surface or to the bottom of the cellar. Before drilling a well, an operator must obtain a letter from the Groundwater Advisory Unit stating the protection depth. Surface casing should not be set deeper than 200 feet below the specified depth without prior approval from the Commission.
To plug and abandon a well, operators must use only cementers approved by the Commission's Director of Field Operations in accordance with SWR 14 ([http://info.sos.state.tx.us/pls/pub/readtac\\$ext.TacPage?sl=R&app=9&p_dir=&p_rloc=&poloc=&pg=1&plac=&li=16&pt=1&ch=3&rl=14](http://info.sos.state.tx.us/pls/pub/readtac$ext.TacPage?sl=R&app=9&p_dir=&p_rloc=&poloc=&pg=1&plac=&li=16&pt=1&ch=3&rl=14)). Cementing companies, service companies, or operators can qualify as approved cementers by demonstrating that they are able to mix and pump cement in compliance with Commission rules and regulations.
- D. **Estimated % wash-out:** If the estimated % wash-outs less than 20% (or 30% along the Gulf Coast), provide supporting documentation such as caliper log to show how the estimated % wash-out was obtained.
- E. **Multi-stage cement:** An operator must report the multi-stage cement shoe in II, Casing Cementing Data section by selecting the type of casing and Multi-stage cement shoe. The operator must report the multi-stage cement tool in III, Casing Cementing Data section by selecting the type of casing and Multi-stage cement/DV tool.
- F. **Multiple parallel strings:** An operator should file the Form W-15 as an attachment to the Form W-4, Application for Multiple Completion. An operator may be required to submit multiple Form W15's to show all data for multiple parallel strings.
- G. **Slurry data:** If cement job exceeds three slurries, continue the list of slurries in the Slurry table in the subsequent Casing Cementing Data box.



RAILROAD COMMISSION OF TEXAS

1701 N. Congress

P.O. Box 12967

Austin, Texas 78701-2967

CEMENTING REPORT

Form W-15

Rev. 08/2014

Cementer: Fill in shaded areas.

Operator: Fill in other items.

OPERATOR INFORMATION

Operator Name: SABLE PERMIAN

Operator P-5 No.:

Cementer Name: HALLIBURTON

Cementer P-5 No.: 347151

WELL INFORMATION

District No.: 07C

County: REAGAN

Well No.: 3515 HK

API No.: 383-40689

Drilling Permit No.: 854556

Lease Name: UNIVERSITY 10

Lease No.:

Field Name: LIN (WOLFCAMP)

Field No.: 53613750

I. CASING CEMENTING DATA

Type of casing: ☐ Conductor ☐ Surface ☒ Intermediate ☐ Liner ☐ Production

Drilled hole size (in.): 12 1/2

Depth of drilled hole (ft.): 7703

Est. % wash-out or hole enlargement: 20

Size of casing in O.D. (in.): 9 5/8

Casing weight (lbs/ft) and grade: 40# J-55

No. of centralizers used: 64

Was cement circulated to ground surface (or bottom of cellar) outside casing? ☒ YES ☐ NO If no for surface casing, explain in Remarks.

Setting depth shoe (ft.):

Top of liner (ft.):

7703

Setting depth liner (ft.):

Hrs. waiting on cement before drill-out:

Calculated top of cement (ft.):

Cementing date: 8-14-2019

SLURRY

Slurry No.	No. of Sacks	Class	Additives	Volume (cu. ft.)	Height (ft.)
1	805	C		2747.47	7076
2	135	C		227.34	627
3					
Total	940			2974.81	7703

II. CASING CEMENTING DATA

Type of casing: ☐ Surface ☐ Intermediate ☐ Production ☐ Tapered production ☐ Multi-stage cement shoe ☐ Multiple parallel strings

Drilled hole size (in.):

Depth of drilled hole (ft.):

Est. % wash-out or hole enlargement:

Size of casing in O.D. (in.):

Casing weight (lbs/ft) and grade:

No. of centralizers used:

Tapered string drilled hole size (in.)

Tapered string depth of drilled hole (ft.)

Upper: Lower:

Upper: Lower:

Tapered string size of casing in O.D. (in.)

Tapered string casing weight (lbs/ft) and grade

Tapered string no. of centralizers used

Upper: Lower:

Upper: Lower:

Upper: Lower:

Was cement circulated to ground surface (or bottom of cellar) outside casing? ☐ YES ☐ NO

Setting depth shoe (ft.):

Hrs. waiting on cement before drill-out:

Calculated top of cement (ft.):

Cementing date:

SLURRY

Slurry No.	No. of Sacks	Class	Additives	Volume (cu. ft.)	Height (ft.)
1					
2					
3					
Total	0			0	0

III. CASING CEMENTING DATA

Type of casing: ☐ Surface ☐ Intermediate ☐ Production ☐ Tapered production ☐ Multi-stage cement/DV tool ☐ Multiple parallel strings

Drilled hole size (in.):

Depth of drilled hole (ft.):

Est. % wash-out or hole enlargement:

Size of casing in O.D. (in.):

Casing weight (lbs/ft) and grade:

No. of centralizers used:

Tapered string drilled hole size (in.)

Tapered string depth of drilled hole (ft.)

Upper: Lower:

Upper: Lower:

Tapered string size of casing in O.D. (in.)

Tapered string casing weight (lbs/ft) and grade

Tapered string no. of centralizers used

Upper: Lower:

Upper: Lower:

Upper: Lower:

Was cement circulated to ground surface (or bottom of cellar) outside casing? ☐ YES ☐ NO

Setting depth tool (ft.):

Hrs. waiting on cement before drill-out:

Calculated top of cement (ft.):

Cementing date:

SLURRY

Slurry No.	No. of Sacks	Class	Additives	Volume (cu. ft.)	Height (ft.)
1					
2					
3					
Total	0			0	0

CEMENTING TO SQUEEZE, PLUG BACK OR PLUG AND ABANDON								
	PLUG #1	PLUG #2	PLUG #3	PLUG #4	PLUG #5	PLUG #6	PLUG #7	
Cementing Date								
Size of hole or pipe (in.)								
Depth to bottom of tubing or drill pipe (ft.)								
Cement retainer setting depth (ft.)								
CIBP setting depth (ft.)								
Amount of cement on top of CIBP (ft.)								
Sacks of cement used								
Slurry volume pumped (cu. ft.)								
Calculated top of plug (ft.)								
Measured top of plug, if tagged (ft.)								
Slurry weight (lbs/gal)								
Class/type of cement								
Perforate and squeeze (YES/NO)								

REMARKS
CIRCULATED 128 SACKS CMT TO SURFACE

CEMENTER'S CERTIFICATE: I declare under penalties prescribed in Sec. 91.143, Texas Natural Resources Code, that I am authorized to make this certification, that the cementing of casing and/or the placing of cement plugs in this well as shown in the report was performed by me or under my supervision, and that the cementing data and facts presented on both sides of this form are true, correct, and complete, to the best of my knowledge. This certification covers cementing data only.

STEVEN GRISHAM

Halliburton

Name and title of cementer's representative
6155 W. Murphy St.

Cementing Company
Odessa, TX, 79763

Signature

432-571-8600

8-15-2019

Address

City, State, Zip Code

Tel: Area Code

Number

Date: mo. day yr.

OPERATOR'S CERTIFICATE: I declare under penalties prescribed in Sec. 91.143, Texas Natural Resources Code, that I am authorized to make this certification, that I have knowledge of the well data and information presented in this report, and that data and facts presented on both sides of this form are true, correct, and complete, to the best of my knowledge. This certification covers all well data.

~~XXXXXXXXXX~~ TODD BRODERICK

~~XXXX DRILLING ENGINEER~~

~~XXXXXXXXXX~~

~~Todd Broderick~~
Todd Broderick (Apr 23, 2020)

Typed or printed name of operator's representative

Title

Signature

~~XXXXXXXXXX~~ 700 MILAM SUITE 3100 HOUSTON, TX 77002

713-579-8108

~~XXXXXXXXXX~~
Date: mo. day yr.

Address

City, State, Zip Code

Tel: Area Code

Number

Date: mo. day yr.

Instructions for Form W-15, Cementing Report

Apr 23, 2020

NOTICE: The Form W-15 must be submitted as an attachment to a Form G-1 (Gas Well Back Pressure Test, Completion or Recompletion Report, and Log), Form W-2 (Oil Well Potential Test, Completion or Recompletion Report, and Log), Form W-3 (Plugging Record), or Form W-4 (Application for Multiple Completion), any time cement is pumped in a wellbore.

- What to file:** An operator should file an original and one copy of the completed Form W-15 for each cementing company used on a well. The cementing of different casing strings on a well by one cementing company may be reported on one form.
The Form W-15 should be filed with the Form W-3, Plugging Record, unless the Form W-3 is signed by the cementing company representative. When reporting dry holes, operators must complete Form W-15, in addition to Form W-3, to show any casing cemented in the hole.
- How to file:** An oil and gas completion report and Form W-15 may be filed online using the Commission's Online System (<https://webapps.rrc.state.tx.us/security/login.do>) or a paper copy of the form may be mailed to the Commission in Austin (P.O. Box 12967, Austin, Texas 78711-2967).
- Surface casing:** An operator must set and cement sufficient surface casing to protect all usable-quality water strata, as defined by the Groundwater Advisory Unit in Austin. Sufficient cement shall be used to fill the annular space outside the casing from the shoe to the ground surface or to the bottom of the cellar. Before drilling a well, an operator must obtain a letter from the Groundwater Advisory Unit stating the protection depth. Surface casing should not be set deeper than 200 feet below the specified depth without prior approval from the Commission.
To plug and abandon a well, operators must use only cementers approved by the Commission's Director of Field Operations in accordance with SWR 14 ([http://info.sos.state.tx.us/pls/pub/readtac\\$ext.TacPage?sl=R&app=9&p_dir=&p_rloc=&p_tloc=&p_ploc=&pg=1&p_tac=&ti=16&pt=1&ch=3&rl=14](http://info.sos.state.tx.us/pls/pub/readtac$ext.TacPage?sl=R&app=9&p_dir=&p_rloc=&p_tloc=&p_ploc=&pg=1&p_tac=&ti=16&pt=1&ch=3&rl=14)). Cementing companies, service companies, or operators can qualify as approved cementers by demonstrating that they are able to mix and pump cement in compliance with Commission rules and regulations.
- Estimated % wash-out:** If the estimated % wash-out is less than 20% (or 30% along the Gulf Coast), provide supporting documentation such as a caliper log to show how the estimated % wash-out was obtained.
- Multi-stage cement:** An operator must report the multi-stage cement shoe in II. Casing Cementing Data section by selecting the type of casing and Multi-stage cement shoe. The operator must report the multi-stage cement tool in III. Casing Cementing Data section by selecting the type of casing and Multi-stage cement/DV tool.
- Multiple parallel strings:** An operator should file the Form W-15 as an attachment to the Form W-4, Application for Multiple Completion. An operator may be required to submit multiple Form W-15s to show all data for multiple parallel strings.
- Slurry data:** If cement job exceeds three slurries, continue the list of slurries in the Slurry table in the subsequent Casing Cementing Data box.



RAILROAD COMMISSION OF TEXAS

1701 N. Congress

P.O. Box 12967

Austin, Texas 78701-2967

CEMENTING REPORT

Form W-15

Rev. 08/2014

Cementer: Fill in shaded areas.

Operator: Fill in other items.

OPERATOR INFORMATION

Operator Name: SABLE PERMIAN RESOURCES LLC

Operator P-5 No.: 745521

Cementer Name: HALLIBRTON ENERGY SERVICES

Cementer P-5 No.: 347151

WELL INFORMATION

District No.: 07C

County: ~~XOON~~ REAGAN

Well No.: 3513HK

API No.: 383-40659

Drilling Permit No.: 854556

Lease Name: UNIVERSITY 10

Lease No.:

Field Name: LIN (WOLFCAMP)

Field No.: 53613750

I. CASING CEMENTING DATA

Type of casing: ☐ Contactor ☐ Surface ☐ Intermediate ☐ Liner ☒ Production

Drilled hole size (in.): 8 3/4

Depth of drilled hole (ft.): 24112

Est. % wash-out or hole enlargement: 20

Size of casing in O.D. (in.): 5 1/2

Casing weight (lbs/ft) and grade: 20# P110CY

No. of centralizers used: 421

Was cement circulated to ground surface (or bottom of cellar) outside casing? ☒ YES ☐ NO If no for surface casing, explain in Remarks.

Setting depth shoe (ft.):

Top of liner (ft.):

24112

Setting depth liner (ft.):

Hrs. waiting on cement before drill-out:

Calculated top of cement (ft.): 0

Cementing Date: 9/3/2019

SLURRY

Slurry No.	No. of Sacks	Class	Additives	Volume (cu.ft.)	Height (ft.)
1	1470	ECONOCHEM HLC	SEE REMARKS	2624	7457.8
2	2925	NEOCHEM PT2	N/1	4212	16648.2
3					
Total	4395			6836	24106

II. CASING CEMENTING DATA

Type of casing: ☐ Surface ☐ Intermediate ☐ Production ☐ Tapered ☐ Multi-stage shoe ☐ Multiple parallel string

Drilled hole size (in.):

Depth of drilled hole (ft.):

Est. % wash-out or hole enlargement:

Size of casing in O.D. (in.):

Casing weight (lbs/ft) and grade:

No. of centralizers used:

Tapered string drilled hole size (in.)

Tapered string depth of drilled hole (ft.)

Upper: Lower:

Upper: Lower:

Tapered string size of casing in O.D. (in.)

Tapered string casing weight (lbs/ft) and grade

Tapered string no. of centralizers used

Upper: Lower:

Upper: Lower:

Upper: Lower:

Was cement circulated to ground surface (or bottom cellar) outside casing? ☐ YES ☐ NO

Setting depth shoe (ft.):

Hrs. waiting on cement before drill-out:

Calculated top of cement (ft.):

Cementing Date: 8/25/2019

SLURRY

Slurry No.	No. of Sacks	Class	Additives	Volume (cu.ft.)	Height (ft.)
1					
2					
3					
Total					

III. CASING CEMENTING DATA

Type of casing: ☐ Surface ☐ Intermediate ☐ Production ☐ Tapered ☐ Multi-stage/DV tool ☐ Multiple parallel string

Drilled hole size (in.):

Depth of drilled hole (ft.):

Est. % wash-out or hole enlargement:

Size of casing in O.D. (in.):

Casing weight (lbs/ft) and grade:

No. of centralizers used:

Tapered string drilled hole size (in.)

Tapered string depth of drilled hole (ft.)

Upper: Lower:

Upper: Lower:

Tapered string size of casing in O.D. (in.)

Tapered string casing weight (lbs/ft) and grade

Tapered string no. of centralizers used

Upper: Lower:

Upper: Lower:

Upper: Lower:

Was cement circulated to ground surface (or bottom cellar) outside casing? ☐ YES ☐ NO

Setting depth shoe (ft.):

Hrs. waiting on cement before drill-out:

Calculated top of cement (ft.):

Cementing Date:

SLURRY

Slurry No.	No. of Sacks	Class	Additives	Volume (cu.ft.)	Height (ft.)
1					
2					
3					
Total					

CEMENTING TO SQUEEZE, PLUG BACK OR PLUG AND ABANDON

	Plug #1	Plug #2	Plug #3	Plug #4	Plug #5	Plug #6	Plug #7
Cementing Date							
Size of hole or pipe (in.)							
Depth to bottom of tubing or drill pipe (ft.)							
Cement retainer setting depth (ft.)							
CIBP setting depth (ft.)							
Amount of cement on top of CIBP (ft.)							
Sacks of cement used							
Slurry volume pumped (cu. ft.)							
Calculated top of plug (ft.)							
Measured top of plug, if tagged (ft.)							
Slurry weight (lbs/gal)							
Class/type of cement							
Perforate and squeeze (YES/NO)							

REMARKS

905904053

SLURRY 1 ADDITIVES: .125 LBM POLY-E-FLAKE, .475% HR-601, 3 LBM KOL-SEAL, .075% SA-1015, .25 LBM D-AIR 5000.

CEMENTER'S CERTIFICATE: I declare under penalties prescribed in Sec. 91.143, Texas Natural Resources Code, that I am authorized to make this certification, that the cementing of casing and/or the placing of cement plugs in this well as shown in the report was performed by me or under my supervision, and that the cementing data and facts presented on both sides of this form are true, correct, and complete, to the best of my knowledge. This certification covers cementing data only.

TRENTON C. ELROD - SSIT

Halliburton

Name and title of cementer's representative

Cementing Company

Signature

1301 W. Webb St.

Brownfield, Tx, 79316

575-392-0700

9/3/2019

Address City, State, Zip code

Tel: Area Code Number

Date: mo. Day yr.

OPERATOR'S CERTIFICATE: I declare under penalties prescribed in Sec. 91.143, Texas Natural Resources Code, that I am authorized to make this certification, that I have knowledge of the well data and information presented in this report, and that data and facts presented on both sides of this form are true, correct, and complete, to the best of my knowledge. This certification covers all well data.

TODD BRODERICK

DRILLING ENGINEER

Todd Broderick

Todd Broderick (Apr 23, 2020)

Signature

Intermediate Production Tapered production Multi-stage cement shoe

Title

700 MILAM, SUITE 3100 HOUSTON, TX 77002

713-579-8108

Apr 23, 2020

Address City, State, Zip code

Tel: Area Code Number

Date: mo. Day yr.

Instructions for W-15, Cementing Report

NOTICE: The Form W-15 must be submitted as an attachment to a Form G-1 (Gas Well Back Pressure Test, Completion or Recompletion Report, and Log), Form W-2 (Oil Well Potential Test, Completion or Recompletion Report, and Log), Form W-3 (Plugging Record), or Form W-4 (Application for Multiple Completion), any time cement is pumped in a wellbore.

- A. **What to file:** An operator should file an original and one copy of the completed Form W-15 for each cementing company used on a well. The cementing of different casing strings on a well by one cementing company may be reported on one form.
- The Form W-15 should be filed with the Form W-3, Plugging Record, unless the Form W-3 is signed by the cementing company representative. When reporting dry holes, operators must complete Form W-15, in addition to Form W-3, to show any casing cemented in the hole.
- B. **How to file:** An oil and gas completion report and Form W-15 may be filed online using the Commission's Online System (<https://webapps.rrc.state.tx.us/security/login.do>) or a paper copy of the form may be mailed to the Commission in Austin (P.O. Box 12967, Austin, Texas 78711-2967).
- C. **Surface casing:** An operator must set and cement sufficient surface casing to protect all usable-quality water strata, as defined by the Groundwater Advisory Unit in Austin. Sufficient cement shall be used to fill the annular space outside the casing from the shoe to the ground surface or to the bottom of the cellar. Before drilling a well, an operator must obtain a letter from the Groundwater Advisory Unit stating the protection depth. Surface casing should not be set deeper than 200 feet below the specified depth without prior approval from the Commission.
- To plug and abandon a well, operators must use only cementers approved by the Commission's Director of Field Operations in accordance with SWR 14 ([http://info.sos.state.tx.us/pls/pub/readtac\\$ext.TacPage?sl=R&app=9&p_dir=&p_rloc=&p_tloc=&p_ploc=&pg=1&p_tac=&ti=16&pt=1&ch=3&rl=14](http://info.sos.state.tx.us/pls/pub/readtac$ext.TacPage?sl=R&app=9&p_dir=&p_rloc=&p_tloc=&p_ploc=&pg=1&p_tac=&ti=16&pt=1&ch=3&rl=14)). Cementing companies, service companies, or operators can qualify as approved cementers by demonstrating that they are able to mix and pump cement in compliance with Commission rules and regulations.
- D. **Estimated % wash-out:** If the estimated % wash-out is less than 20% (or 30% along the Gulf Coast), provide supporting documentation such as a caliper log to show how the estimated % wash-out was obtained.
- E. **Multi-stage cement:** An operator must report the multi-stage cement shoe in II. Casing Cementing Data section by selecting the type of casing and Multi-stage cement shoe. The operator must report the multi-stage cement tool in III. Casing Cementing Data section by selecting the type of casing and Multi-stage cement/DV tool.
- F. **## Multiple parallel strings:** An operator should file the Form W-15 as an attachment to the Form W-4, Application for Multiple Completion. An operator may be required to submit multiple Form W-15s to show all data for multiple parallel strings.
- G. **Slurry data:** If cement job exceeds three slurries, continue the list of slurries in the Slurry table in the subsequent Casing Cementing data box.

Tracking No.: 234416

This facsimile L-1 was generated electronically from data submitted to the RRC.

Instructions

When to File Form L-1:

- with Forms G-1, W-2, and GT-1 for new and deepened gas, oil, and geothermal wells
- with Form W-3 for plugged dry holes
- when sending in a log which was held under a request for confidentiality and the period for confidentiality has not yet expired.

When is Form L-1 NOT required:

- with Forms W-2, G-1, and GT-1 filed for injection wells, disposal wells, water supply wells, service wells, re-test wells, re-classifications, and plugbacks of oil, gas or geothermal wells
- with Form W-3 for plugging of other than a dry hole

Where to File Form L-1:

- with the appropriate Commission district office

Filling out Form L-1:

- Section I and the signature section must be filled out for all wells
- complete only the appropriate part of Section II

Type of log required:

- any wireline survey run for the purpose of obtaining lithology, porosity, or resistivity information
- no more than one such log is required but it must be of the subject well
- if such log is NOT run on the subject well, do NOT substitute any other type of log; just select Section II, Part A below

SECTION I. IDENTIFICATION

Operator Name: SABLE PERMIAN RESOURCES, LLC	District No. 7C	Completion Date: 09/04/2019
Field Name LIN (WOLFCAMP)	Drilling Permit No. 854556	
Lease Name UNIVERSITY 10	Lease/ID No. 17844	Well No. 3513HK
County REAGAN	API No. 42- 383-40689	

SECTION II. LOG STATUS (Complete either A or B)

☐ A. BASIC ELECTRIC LOG NOT RUN

☒ B. BASIC ELECTRIC LOG RUN. (Select one)

- ☒ 1. Confidentiality is requested and a copy of the header for each log that has been run on the well is attached.
- ☐ 2. Confidentiality already granted on basic electric log covering this interval (applicable to deepened wells only).
- ☐ 3. Basic electric log covering this interval already on file with Commission (applicable to deepened wells only).
- ☐ 4. Log attached to (select one):

☐ (a) Form L-1 (this form). If the company/lease name on log is different from that shown in Section I, please enter name on log here: _____

Check here if attached log is being submitted after being held confidential. ☐

☐ (b) Form P-7, Application for Discovery Allowable and New Field Designation.

☐ (c) Form W-4, Application for Multiple Completion:

Lease or ID No(s). _____

Well No(s). _____

Dawn Manning

Signature

SABLE PERMIAN RESOURCES, LLC

Name (print)

Permitting & Regulatory Specialist

Title


(713) 579-8028

Phone

04/24/2020

Date

-FOR RAILROAD COMMISSION USE ONLY-

	Gamma Ray Curve And Lateral			
	Job #:	198171	Well ID:	854556
	Scale:	5" = 100 ft	Type:	MD

Well Site Information	
Oil Company	Sable Permian Resources
Surface Location	University 10 F Pad
Well Name	University 10 35-23 #13HK
API	42383406890000
Field	Permian
State	Texas
Country	United States of America

Surface Coordinates	
Well Type	Lateral
Latitude	31° 12' 54 N
Longitude	101° 32' 35 W
N / S Coordinates	565,124.60 usft
E / W Coordinates	1,621,875.74 usft
Azimuth Reference	True North
Grid Convergence	-0.62°

MWD Engineers	
Lead Hand	R. Williams
Second Hand	M. Martin

Perm Datum	Mean Sea Level	Elevation	2,715.00 ft		
Log depth measured from KB is	31.00 ft	above perm datum.	KB = 2,746.00 ft		
Total Depth	24,112.00 ft	Spud Date	Aug/08/2019	End Date	Aug/30/2019
(MD) Log Interval		Start Depth	1,061.94 ft	End Depth	23,723.00 ft

Bore Hole Record		
Hole Size	From	To
12.25 in	1,152.00 ft	7,718.00 ft
8.75 in	7,718.00 ft	24,112.00 ft

Casing Record				
Type	Size	WGT	From	To
Surface	9.63 in	40.00 ppf	0.00 ft	7,703.00 ft
Production	5.50 in	17.00 ppf	0.00 ft	24,112.00 ft

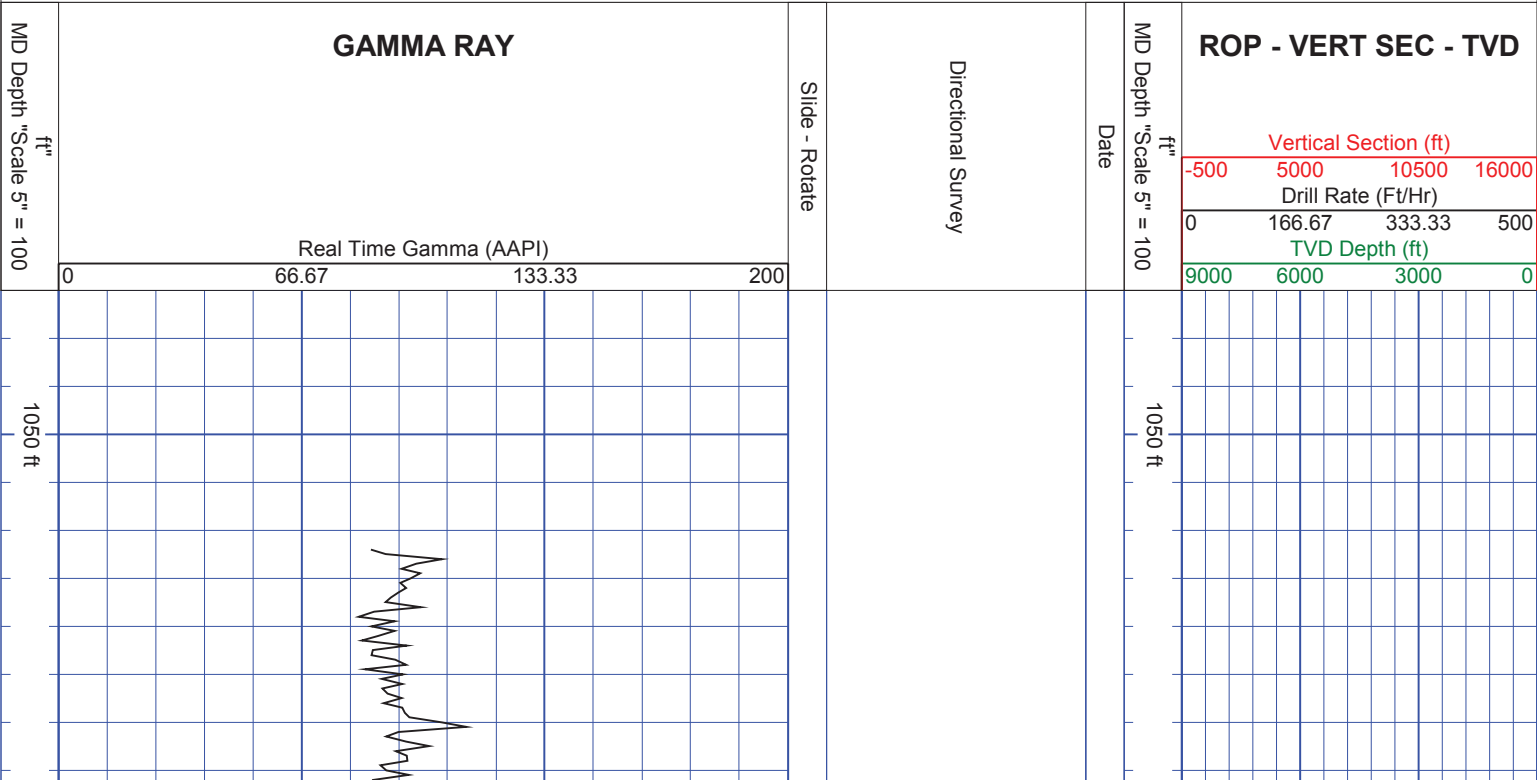
Run Data									
Bit Run Number	1	2	3	4	5				
Start Date & Time	Aug/09/2019 01:15:00	Aug/13/2019 02:00:00	Aug/15/2019 04:00:00	Aug/16/2019 08:30:00	Aug/20/2019 06:00:00				
End Date & Time	Aug/12/2019 23:45:00	Aug/14/2019 00:00:00	Aug/16/2019 07:00:00	Aug/20/2019 05:30:00	Aug/24/2019 06:00:00				
Run Hours	94.30	22.00	27.00	93.00	90.00				
Depth In	1,152.00 ft	7,082.00 ft	7,718.00 ft	7,960.00 ft	14,403.00 ft				
Depth Out	7,082.00 ft	7,718.00 ft	7,960.00 ft	14,403.00 ft	19,280.00 ft				
Total Gamma Correction	9.18	9.18	6.16	6.36	6.34				
Gamma to Bit	61.99 ft	49.72 ft	51.98 ft	51.98 ft	53.86 ft				
Resistivity to Bit	N/A	N/A	N/A	N/A	N/A				
Mud Type	OBM	OBM	OBM	OBM	OBM				
Density	9.10 ppg	9.30 ppg	12.20 ppg	12.50 ppg	12.60 ppg				
Viscosity	46.00 sec/qt	43.00 sec/qt	52.00 sec/qt	50.00 sec/qt	58.00 sec/qt				
PH	N/A	N/A	N/A	N/A	N/A				
Fluid Loss	N/A	N/A	N/A	N/A	N/A				
K+ ppm	N/A	N/A	N/A	N/A	N/A				
CL- ppm	57,000.00 mg/L	61,000.00 mg/L	62,000.00 mg/L	58,000.00 mg/L	58,000.00 mg/L				
Max Mud Temp	161.00 °F	159.00 °F	146.00 °F	206.00 °F	143.00 °F				
Mud Report Depth	5,645.00 ft	7,718.00 ft	7,859.00 ft	14,400.00 ft	19,280.00 ft				

Run Data

Bit Run Number	6	7			
Start Date & Time	Aug/24/2019 09:30:00	Aug/28/2019 12:00:00			
End Date & Time	Aug/28/2019 06:00:00	Sep/01/2019 17:00:00			
Run Hours	96.50	101.00			
Depth In	19,280.00 ft	22,282.00 ft			
Depth Out	22,282.00 ft	24,112.00 ft			
Total Gamma Correction	6.73	6.73			
Gamma to Bit	58.15 ft	58.15 ft			
Resistivity to Bit	N/A	N/A			
Mud Type	OBM	OBM			
Density	12.60 ppg	12.60 ppg			
Viscosity	60.00 sec/qt	57.00 sec/qt			
PH	N/A	N/A			
Fluid Loss	N/A	N/A			
K+ ppm	N/A	N/A			
CL- ppm	67,000.00 mg/L	57,000.00 mg/L			
Max Mud Temp	212.00 °F	208.00 °F			
Mud Report Depth	22,282.00 ft	24,112.00 ft			

Remarks
Note; Data not logged to TD due to MWD failure.

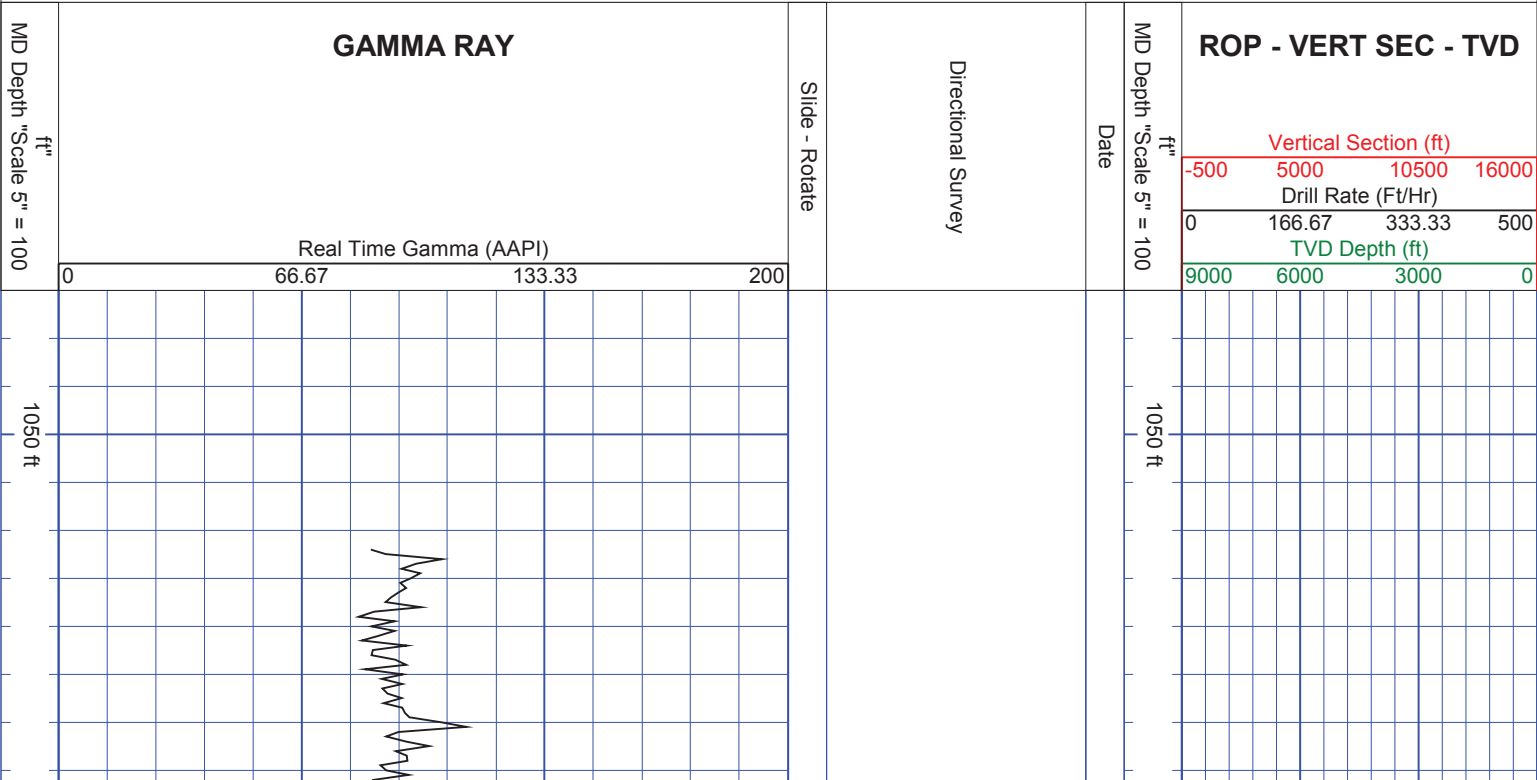
Interpretations of this data by Cathedral Energy Services will be of best judgment as to correctness. Cathedral Energy Services cannot and does not guarantee the accuracy or correctness of interpretations or any surveys derived therefrom. Cathedral Energy Services makes no warranties of performance, results, fitness or suitability for any particular purposes with respect to the goods being furnished under the terms and conditions. Cathedral Energy Services warrants that the equipment furnished will conform to Cathedral Energy Services published specifications in effect at the time and be in good working order.



Bit Run Number	6	7			
Start Date & Time	Aug/24/2019 09:30:00	Aug/28/2019 12:00:00			
End Date & Time	Aug/28/2019 06:00:00	Sep/01/2019 17:00:00			
Run Hours	96.50	101.00			
Depth In	19,280.00 ft	22,282.00 ft			
Depth Out	22,282.00 ft	24,112.00 ft			
Total Gamma Correction	6.73	6.73			
Gamma to Bit	58.15 ft	58.15 ft			
Resistivity to Bit	N/A	N/A			
Mud Type	OBM	OBM			
Density	12.60 ppg	12.60 ppg			
Viscosity	60.00 sec/qt	57.00 sec/qt			
PH	N/A	N/A			
Fluid Loss	N/A	N/A			
K+ ppm	N/A	N/A			
CL- ppm	67,000.00 mg/L	57,000.00 mg/L			
Max Mud Temp	212.00 °F	208.00 °F			
Mud Report Depth	22,282.00 ft	24,112.00 ft			

Remarks
Note; Data not logged to TD due to MWD failure.

Interpretations of this data by Cathedral Energy Services will be of best judgment as to correctness. Cathedral Energy Services cannot and does not guarantee the accuracy or correctness of interpretations or any surveys derived therefrom. Cathedral Energy Services makes no warranties of performance, results, fitness or suitability for any particular purposes with respect to the goods being furnished under the terms and conditions. Cathedral Energy Services warrants that the equipment furnished will conform to Cathedral Energy Services published specifications in effect at the time and be in good working order.



CERTIFICATE OF COMPLIANCE
AND TRANSPORTATION AUTHORITY

P-4

This facsimile P-4 was generated electronically from data submitted to the RRC.
A certification of the automated data is available in the RRC's Austin office.

Tracking No.: 261307

1. Field name exactly as shown on proration schedule LIN (WOLFCAMP)		2. Lease name as shown on proration schedule UNIVERSITY 10					
3. Current operator name exactly as shown on P-5 Organization Report FDL OPERATING, LLC		4. Operator P-5 no. 263924	5. Oil Lse/Gas ID no 17844	6. County REAGAN	7. RRC district 7C		
8. Operator address including city, state, and zip code ATTN ROBIN SWANNER PO BOX 472 JUDSON, TX 75660		9. Well no(s) (see instruction E) 3513HK			11. Effective Date 10/03/2021		
		10. Classification <input checked="" type="checkbox"/> Oil <input type="checkbox"/> Gas <input type="checkbox"/> Other (see instruction A)					
12. Purpose of Filing. (Complete section a or b below.) (See instructions B and G) a. Change of: <input type="checkbox"/> operator <input type="checkbox"/> oil or condensate gatherer <input type="checkbox"/> gas gatherer <input type="checkbox"/> gas purchaser <input type="checkbox"/> gas purchaser system code <input type="checkbox"/> field name from: _____ Docket #: _____ <input type="checkbox"/> lease name from: _____ <hr/> b. New RRC Number for: <input checked="" type="checkbox"/> oil lease <input type="checkbox"/> gas well Due to: <input checked="" type="checkbox"/> new completion or recompletion <input type="checkbox"/> reclass oil to gas <input type="checkbox"/> reclass gas to oil <input type="checkbox"/> other well (specify) _____ <input type="checkbox"/> consolidation <input type="checkbox"/> unitization <input type="checkbox"/> field transfer <input type="checkbox"/> subdivision (oil lease only)							
13. Authorized GAS WELL GAS or CASINGHEAD GAS Gatherer(s) and/or Purchaser(s). (See instruction G).							
Gatherer	Purchaser	Name of GAS WELL GAS or CASINGHEAD GAS Gatherer(s) or Purchaser(s) As Indicated in Columns to the Left (Attach an additional sheet in same format if more space is needed)			Purchaser's RRC Assigned System Code	Percent of Take	Full-well stream
X	X	DCP OPERATING COMPANY, LP(195959)			0001	100.0	
14. Authorized OIL or CONDENSATE Gatherer(s). (See instruction G).							
Name of OIL or CONDENSATE Gatherer(s) - List Highest Volume Gatherer First (Attach an additional sheet in same format if more space is needed)						Percent of Take	
PLAINS MARKETING, L.P.(667883)						100.0	
RRC USE ONLY: Reviewer's initials: _____ Approval date: _____							
15. PREVIOUS OPERATOR CERTIFICATION FOR CHANGE OF OPERATOR P-4 FILING. Being the PREVIOUS OPERATOR, I certify that operating responsibility for the well(s) designated in this filing, located on the subject lease has been transferred in its entirety to the above named Current Operator. I understand, as Previous Operator, that designation of the above named operator as Current Operator is not effective until this certificate is approved by the Commission. <div style="display: flex; justify-content: space-between;"><div style="width: 45%;"><div style="border-bottom: 1px solid black; margin-bottom: 5px;">Name of Previous Operator</div><div style="border-bottom: 1px solid black; margin-bottom: 5px;">Name (print)</div><div style="border-bottom: 1px solid black; margin-bottom: 5px;">Title</div></div><div style="width: 45%;"><div style="border-bottom: 1px solid black; margin-bottom: 5px;">Signature</div><div style="display: flex; justify-content: space-between; margin-bottom: 5px;"><div><input type="checkbox"/> Authorized Employee of previous operator</div><div><input type="checkbox"/> Authorized agent of previous operator (see instruction G)</div></div><div style="display: flex; justify-content: space-between; margin-bottom: 5px;"><div style="border-bottom: 1px solid black; width: 45%;">Date</div><div style="border-bottom: 1px solid black; width: 45%;">Phone with area code</div></div></div></div>							
16. CURRENT OPERATOR CERTIFICATION. By signing this certificate as the Current Operator, I certify that all statements on this form are true and correct and I acknowledge responsibility for the regulatory compliance of the subject lease including plugging of well(s) pursuant to Rule 14. I further acknowledge that I assume responsibility for the physical operation, control, and proper plugging of each well designated in this filing. I also acknowledge that I will remain designated as the Current Operator until a new certificate designating a new Current Operator is approved by the Commission. <div style="display: flex; justify-content: space-between;"><div style="width: 45%;"><div style="border-bottom: 1px solid black; margin-bottom: 5px;">Name (print) Consulting Agent</div><div style="border-bottom: 1px solid black; margin-bottom: 5px;">Title robinswanner@sbcglobal.net</div><div style="border-bottom: 1px solid black; margin-bottom: 5px;">E-mail Address (optional)</div></div><div style="width: 45%;"><div style="border-bottom: 1px solid black; margin-bottom: 5px;">Signature Robin Swanner</div><div style="display: flex; justify-content: space-between; margin-bottom: 5px;"><div><input type="checkbox"/> Authorized Employee of current operator</div><div><input checked="" type="checkbox"/> Authorized agent of current operator (see instruction G)</div></div><div style="display: flex; justify-content: space-between; margin-bottom: 5px;"><div style="border-bottom: 1px solid black; width: 45%;">Date 01/12/2022</div><div style="border-bottom: 1px solid black; width: 45%;">Phone with area code (903) 930-1532</div></div></div></div>							



RAILROAD COMMISSION OF TEXAS

Form P-16

1701 N. Congress
P.O. Box 12967
Austin, Texas 78701-2967

Page 1
Rev. 09/2019

Acreage Designation

Filer is the owner or lessee, or has been authorized by the owner or lessee, of all or an undivided portion of the mineral estate under each tract for which filer is listed as operator below. For all leases operated by other entities, the number of assigned acres shown are reflected on current Commission records or the filer has been authorized by the current operator to change the assigned acreage of that operator as shown below.

SECTION I. OPERATOR INFORMATION			
Operator Name:	FDL Operating, LLC		Operator P-5 No.: 263924
Operator Address:	5221 N O CONNOR BLVD # 1100 IRVING TX 75039		

SECTION II. WELL INFORMATION			
District No.:	7C	API No.:	383-40689
Well No.:	3513HK	Drilling Permit No.:	854556
Lease Name:	University 10	RRC ID or Lease No.:	17844
Total Lease Acres:	8391.100	Field Name:	Lin (Wolfcamp)
Proration Acres:	320.000	Field No.:	53613750
Wellbore Profile	Horizontal Well	Is this a UFT field?	Yes
SL Record (Parent) Well Drilling Permit No.:		County:	Reagan

Purpose of Filing:
☐ Drilling Permit Application (Form W-1)
☒ Completion Report (Form G-1/W-2)

SECTION III. LISTING OF ALL WELLS IN THE APPLIED-FOR FIELD ON THE SAME ACREAGE AS THE LEASE, POOLED UNIT, OR UNITIZED TRACT DESIGNATED IN SECTION II ABOVE BY FILER							
RRC ID No. or Lease No.	Well No.	Profile	Lease Name	API No.	Acres Assigned	SWR 38 Except. (Y/N)	Operator Name and Operator No. (if different from filing operator)
17844	2501HS	Horiz.	University 10	383-40463	80.000	N	
17844	2502HA	Horiz.	University 10	383-40458	80.000	N	
17844	2503HK	SL	University 10	383-40464	0.000	N	
17844	2506HS	Horiz.	University 10	383-40457	80.000	N	
17844	2507HA	Horiz.	University 10	383-40455	80.000	N	
17844	2508HK	SL	University 10	383-40465	0.000	N	
17844	2601HB	SL	University 10	383-40271	0.000	N	
17844	2601HD	Horiz.	University 10	383-40178	320.000	N	
17844	2701H	Horiz.	University 10	383-38224	0.000	N	
17844	2702H	Horiz.	University 10	383-38227	280.000	N	
17844	2703H	Horiz.	University 10	383-38225	320.000	N	
17844	2704H	Horiz.	University 10	383-38226	320.000	N	
17844	2705H	Horiz.	University 10	383-38230	0.000	N	
17844	2706H	Horiz.	University 10	383-38228	0.000	N	
17844	2801HR	Horiz.	University 10	383-37619	180.000	N	


A. Total Assigned Horiz. Acreage = 1740.000 Total Remaining Horiz. Acreage = 6651.100 B. Total Assigned Vert./Dir. Acreage = 0.000 Total Remaining Vert./Dir. Acreage = 8391.100	C. Total Assigned Acreage = Total Remaining Acreage =
---	--

SECTION IV. REMARKS - REQUIRED FOR PSA AND CO-DEVELOPMENT (refer to instructions)	
Docket 7C-0322376 Field transfer	

Attach Additional Pages As Needed.

☐ No additional pages☐ Additional Pages: _____ (No. of additional pages)

CERTIFICATION: I declare under penalties prescribed in Sec. 91.143, Texas Natural Resources Code, that this report was prepared by me or under my supervision or direction, that I am authorized to make this report, and that the information contained in this report is true, correct, and complete to the best of my knowledge.


Signature

Robin Swanner - Consultant
Name and title (type or print)

robinswanner@sbcglobal.net

Email
(include email address only if you affirmatively consent to its public release)

P.O. Box 472 Judson, TX 75660

Address City, State, Zip Code

903-930-1532

Tel: Area Code Number

01/11/22

Date: mo. day yr.

Rev. 09/2019

SECTION III (CONTINUED). LISTING OF ALL WELLS IN THE APPLIED-FOR FIELD ON THE SAME ACREAGE AS THE LEASE, POOLED UNIT, OR UNITIZED TRACT DESIGNATED IN SECTION II ABOVE BY FILER

A. Total Assigned Horiz. Acreage	=	5480.000
Total Remaining Horiz. Acreage	=	2911.100
Total Assigned Vert./Dir. Acreage	=	0.000
Total Remaining Vert./Dir. Acreage	=	8391.100

C. Total Assigned Acreage	=	
Total Remaining Acreage	=	

WAYNE CHRISTIAN, CHAIRMAN
CHRISTI CRADDICK, COMMISSIONER
JIM WRIGHT, COMMISSIONER



DANNY SORRELLS
ASSISTANT EXECUTIVE DIRECTOR
DIRECTOR, OIL AND GAS DIVISION
PAUL DUBOIS
ASSISTANT DIRECTOR, TECHNICAL PERMITTING

RAILROAD COMMISSION OF TEXAS

OIL AND GAS DIVISION

March 16, 2022

FDL OPERATING, LLC
ATTN ROBIN SWANNER
PO BOX 472
JUDSON TX 75660

RE: UNIVERSITY 10 — WELL NO. 3513HK
REAGAN COUNTY, DISTRICT 7C, TEXAS
API NO. 383-40689
LEASE/ID NO. 17844
PRODUCING INTERVAL: 8657'-23,915'

Dear Operator:

The Commission has approved your request to transfer the above-referenced well from the LIN (WOLFCAMP) (53613750) field to the SPRABERRY (TREND AREA) R 40 EXC (85279 201) field.

Please file Forms G-1/W-2, P-4, and W-1 (if not already done) for the well with the new field name indicating the transfer comments in the remarks section. If the previous completion report associated with lease/ID no. 17844 showed perforations, mark "field transfer" in item #6 of the Form W-1. If this completion report did not show perforations, mark "recompletion" instead. Contact the district 7C proration analyst, if you have any questions or to determine if a Form P-15 with plat is required.

Please note: If this well has a Rule 10 exception for the current field, it will be necessary to obtain a new Rule 10 exception letter for this well for the SPRABERRY (TREND AREA) R 40 EXC (85279 201) field.

Sincerely,

A handwritten signature in black ink, appearing to read "Roseanna Edson".

Roseanna Edson
Engineering Specialist
Technical Permitting

WAYNE CHRISTIAN, CHAIRMAN
CHRISTI CRADDICK, COMMISSIONER
JIM WRIGHT, COMMISSIONER



DANNY SORRELLS
ASSISTANT EXECUTIVE DIRECTOR
DIRECTOR, OIL AND GAS DIVISION
PAUL DUBOIS
ASSISTANT DIRECTOR, TECHNICAL PERMITTING

RAILROAD COMMISSION OF TEXAS

OIL AND GAS DIVISION

March 16, 2022

FDL OPERATING, LLC
ATTN ROBIN SWANNER
PO BOX 472
JUDSON TX 75660

RE: UNIVERSITY 10 — WELL NO. 3528HK
REAGAN COUNTY, DISTRICT 7C, TEXAS
API NO. 383-40687
LEASE/ID NO. 17844
PRODUCING INTERVAL: 9030'-24,075'

Dear Operator:

The Commission has approved your request to transfer the above-referenced well from the LIN (WOLFCAMP) (53613750) field to the SPRABERRY (TREND AREA) R 40 EXC (85279 201) field.

Please file Forms G-1/W-2, P-4, and W-1 (if not already done) for the well with the new field name indicating the transfer comments in the remarks section. If the previous completion report associated with lease/ID no. 17844 showed perforations, mark "field transfer" in item #6 of the Form W-1. If this completion report did not show perforations, mark "recompletion" instead. Contact the district 7C proration analyst, if you have any questions or to determine if a Form P-15 with plat is required.

Please note: If this well has a Rule 10 exception for the current field, it will be necessary to obtain a new Rule 10 exception letter for this well for the SPRABERRY (TREND AREA) R 40 EXC (85279 201) field.

Sincerely,

A handwritten signature in black ink, appearing to read "Roseanna Edson".

Roseanna Edson
Engineering Specialist
Technical Permitting

WAYNE CHRISTIAN, CHAIRMAN
CHRISTI CRADDICK, COMMISSIONER
JIM WRIGHT, COMMISSIONER



DANNY SORRELLS
ASSISTANT EXECUTIVE DIRECTOR
DIRECTOR, OIL AND GAS DIVISION
PAUL DUBOIS
ASSISTANT DIRECTOR, TECHNICAL PERMITTING

RAILROAD COMMISSION OF TEXAS

OIL AND GAS DIVISION

March 16, 2022

FDL OPERATING, LLC
ATTN ROBIN SWANNER
PO BOX 472
JUDSON TX 75660

RE: UNIVERSITY 10 — WELL NO. 3527HA
REAGAN COUNTY, DISTRICT 7C, TEXAS
API NO. 383-40686
LEASE/ID NO. 17844
PRODUCING INTERVAL: 8575'-23,538'

Dear Operator:

The Commission has approved your request to transfer the above-referenced well from the LIN (WOLFCAMP) (53613750) field to the SPRABERRY (TREND AREA) R 40 EXC (85279 201) field.

Please file Forms G-1/W-2, P-4, and W-1 (if not already done) for the well with the new field name indicating the transfer comments in the remarks section. If the previous completion report associated with lease/ID no. 17844 showed perforations, mark "field transfer" in item #6 of the Form W-1. If this completion report did not show perforations, mark "recompletion" instead. Contact the district 7C proration analyst, if you have any questions or to determine if a Form P-15 with plat is required.

Please note: If this well has a Rule 10 exception for the current field, it will be necessary to obtain a new Rule 10 exception letter for this well for the SPRABERRY (TREND AREA) R 40 EXC (85279 201) field.

Sincerely,

A handwritten signature in black ink, appearing to read "Roseanna Edson".

Roseanna Edson
Engineering Specialist
Technical Permitting

WAYNE CHRISTIAN, CHAIRMAN
CHRISTI CRADDICK, COMMISSIONER
JIM WRIGHT, COMMISSIONER



DANNY SORRELLS
ASSISTANT EXECUTIVE DIRECTOR
DIRECTOR, OIL AND GAS DIVISION
PAUL DUBOIS
ASSISTANT DIRECTOR, TECHNICAL PERMITTING

RAILROAD COMMISSION OF TEXAS

OIL AND GAS DIVISION

March 16, 2022

FDL OPERATING, LLC
ATTN ROBIN SWANNER
PO BOX 472
JUDSON TX 75660

RE: UNIVERSITY 10 — WELL NO. 3523HK
REAGAN COUNTY, DISTRICT 7C, TEXAS
API NO. 383-40685
LEASE/ID NO. 17844
PRODUCING INTERVAL: 8673'-23,865'

Dear Operator:

The Commission has approved your request to transfer the above-referenced well from the LIN (WOLFCAMP) (53613750) field to the SPRABERRY (TREND AREA) R 40 EXC (85279 201) field.

Please file Forms G-1/W-2, P-4, and W-1 (if not already done) for the well with the new field name indicating the transfer comments in the remarks section. If the previous completion report associated with lease/ID no. 17844 showed perforations, mark "field transfer" in item #6 of the Form W-1. If this completion report did not show perforations, mark "recompletion" instead. Contact the district 7C proration analyst, if you have any questions or to determine if a Form P-15 with plat is required.

Please note: If this well has a Rule 10 exception for the current field, it will be necessary to obtain a new Rule 10 exception letter for this well for the SPRABERRY (TREND AREA) R 40 EXC (85279 201) field.

Sincerely,

A handwritten signature in black ink, appearing to read "Roseanna Edson".

Roseanna Edson
Engineering Specialist
Technical Permitting

WAYNE CHRISTIAN, CHAIRMAN
CHRISTI CRADDICK, COMMISSIONER
JIM WRIGHT, COMMISSIONER



DANNY SORRELLS
ASSISTANT EXECUTIVE DIRECTOR
DIRECTOR, OIL AND GAS DIVISION
PAUL DUBOIS
ASSISTANT DIRECTOR, TECHNICAL PERMITTING

RAILROAD COMMISSION OF TEXAS

OIL AND GAS DIVISION

March 16, 2022

FDL OPERATING, LLC
ATTN ROBIN SWANNER
PO BOX 472
JUDSON TX 75660

RE: UNIVERSITY 10 — WELL NO. 3512HA
REAGAN COUNTY, DISTRICT 7C, TEXAS
API NO. 383-40688
LEASE/ID NO. 17844
PRODUCING INTERVAL: 7940'-23,405'

Dear Operator:

The Commission has approved your request to transfer the above-referenced well from the LIN (WOLFCAMP) (53613750) field to the SPRABERRY (TREND AREA) R 40 EXC (85279 201) field.

Please file Forms G-1/W-2, P-4, and W-1 (if not already done) for the well with the new field name indicating the transfer comments in the remarks section. If the previous completion report associated with lease/ID no. 17844 showed perforations, mark "field transfer" in item #6 of the Form W-1. If this completion report did not show perforations, mark "recompletion" instead. Contact the district 7C proration analyst, if you have any questions or to determine if a Form P-15 with plat is required.

Please note: If this well has a Rule 10 exception for the current field, it will be necessary to obtain a new Rule 10 exception letter for this well for the SPRABERRY (TREND AREA) R 40 EXC (85279 201) field.

Sincerely,

A handwritten signature in black ink, appearing to read "Roseanna Edson".

Roseanna Edson
Engineering Specialist
Technical Permitting



March 11, 2022

Railroad Commission of Texas Attention: Mr.
Paul Dubois
P.O. Box 12967
Austin, TX 78711-2967

RE: Request of FDL Operating, LLC (263924) to transfer wells on the University 10 Lease from the Lin (Wolfcamp) Field to the Spraberry (Trend Area) R 40 Exc Field, Reagan County, Texas

Dear Mr. Dubois,

FDL Operating, LLC ("FDL") respectfully requests a field transfer of the remaining wells in the University 10 Lease (RRC ID# 17844) from the Lin (Wolfcamp) Field ("Lin") to the Spraberry (Trend Area) R 40 Exc Field ("STA R40 Field"). There were 7 wells that were inadvertently omitted from the Final Order #7C-0322376 (see attached) that administratively transferred 29 wells on the same lease into the STA R40 field. These remaining 7 wells were drilled but not completed, (please see attached wellbore query of these 7 wells). FDL completed 5 of the seven wells highlighted in yellow and would like to have these transferred into the existing lease #20685 with the effective date of 03/2020.

If you have any questions regarding this request, please give me a call at (903) 930-1532. Once approved, if you could forward all Field Transfer Letters to robinswanner@sbcglobal.net I would appreciate it.

Sincerely,

Robin Swanner
Consulting Agent

Wellbore Query Results

Search Criteria:

District: 7C

Oil Lease No./Gas Well ID No: 20685

Lease Names: UNIVERSITY 10

Schedule Type: Current

[Return](#)

29 results

Page: 1 of 1

Page Size: [View All](#) ▼

API No.	District	Lease No.	Lease Name	Well No.	Field Name	Operator Name	County	On Schedule	API Depth
38337619 Links ▼	7C	20685 Links ▼	UNIVERSITY 10	2801HR	SPRABERRY (TREND AREA) R 40 EXC	FDL OPERATING, LLC	REAGAN	Y	8241
38337818 Links ▼	7C	20685 Links ▼	UNIVERSITY 10	3601H	SPRABERRY (TREND AREA) R 40 EXC	FDL OPERATING, LLC	REAGAN	Y	8248
38337911 Links ▼	7C	20685 Links ▼	UNIVERSITY 10	2802H	SPRABERRY (TREND AREA) R 40 EXC	FDL OPERATING, LLC	REAGAN	Y	7513
38338152 Links ▼	7C	20685 Links ▼	UNIVERSITY 10	3602H	SPRABERRY (TREND AREA) R 40 EXC	FDL OPERATING, LLC	REAGAN	Y	8221
38338153 Links ▼	7C	20685 Links ▼	UNIVERSITY 10	3603H	SPRABERRY (TREND AREA) R 40 EXC	FDL OPERATING, LLC	REAGAN	Y	8208
38338154 Links ▼	7C	20685 Links ▼	UNIVERSITY 10	3604H	SPRABERRY (TREND AREA) R 40 EXC	FDL OPERATING, LLC	REAGAN	Y	8174
38338155 Links ▼	7C	20685 Links ▼	UNIVERSITY 10	3605H	SPRABERRY (TREND AREA) R 40 EXC	FDL OPERATING, LLC	REAGAN	Y	8485
38338215 Links ▼	7C	20685 Links ▼	UNIVERSITY 10	2803H	SPRABERRY (TREND AREA) R 40 EXC	FDL OPERATING, LLC	REAGAN	Y	7788
38338216 Links ▼	7C	20685 Links ▼	UNIVERSITY 10	2804H	SPRABERRY (TREND AREA) R 40 EXC	FDL OPERATING, LLC	REAGAN	Y	7772
38338217 Links ▼	7C	20685 Links ▼	UNIVERSITY 10	2805H	SPRABERRY (TREND AREA) R 40 EXC	FDL OPERATING, LLC	REAGAN	Y	7822
38338218 Links ▼	7C	20685 Links ▼	UNIVERSITY 10	2806H	SPRABERRY (TREND AREA) R 40 EXC	FDL OPERATING, LLC	REAGAN	Y	7825
38338219 Links ▼	7C	20685 Links ▼	UNIVERSITY 10	2807H	SPRABERRY (TREND AREA) R 40 EXC	FDL OPERATING, LLC	REAGAN	Y	7853
38338220 Links ▼	7C	20685 Links ▼	UNIVERSITY 10	2808H	SPRABERRY (TREND AREA) R 40 EXC	FDL OPERATING, LLC	REAGAN	Y	7867
38338224 Links ▼	7C	20685 Links ▼	UNIVERSITY 10	2701H	SPRABERRY (TREND AREA) R 40 EXC	FDL OPERATING, LLC	REAGAN	Y	825

38338225 Links ▼	7C	20685 Links ▼	UNIVERSITY 10	2703H	SPRABERRY (TREND AREA) R 40 EXC	FDL OPERATING, LLC	REAGAN	Y	7912
38338226 Links ▼	7C	20685 Links ▼	UNIVERSITY 10	2704H	SPRABERRY (TREND AREA) R 40 EXC	FDL OPERATING, LLC	REAGAN	Y	7909
38338227 Links ▼	7C	20685 Links ▼	UNIVERSITY 10	2702H	SPRABERRY (TREND AREA) R 40 EXC	FDL OPERATING, LLC	REAGAN	Y	8230
38338228 Links ▼	7C	20685 Links ▼	UNIVERSITY 10	2706H	SPRABERRY (TREND AREA) R 40 EXC	FDL OPERATING, LLC	REAGAN	Y	854
38338230 Links ▼	7C	20685 Links ▼	UNIVERSITY 10	2705H	SPRABERRY (TREND AREA) R 40 EXC	FDL OPERATING, LLC	REAGAN	Y	860
38338405 Links ▼	7C	20685 Links ▼	UNIVERSITY 10	3606HR	SPRABERRY (TREND AREA) R 40 EXC	FDL OPERATING, LLC	REAGAN	Y	8136
38340178 Links ▼	7C	20685 Links ▼	UNIVERSITY 10	2601HD	SPRABERRY (TREND AREA) R 40 EXC	FDL OPERATING, LLC	REAGAN	Y	9022
38340257 Links ▼	7C	20685 Links ▼	UNIVERSITY 10	2812HC	SPRABERRY (TREND AREA) R 40 EXC	FDL OPERATING, LLC	REAGAN	Y	8136
38340271 Links ▼	7C	20685 Links ▼	UNIVERSITY 10	2601HB	SPRABERRY (TREND AREA) R 40 EXC	FDL OPERATING, LLC	REAGAN	Y	8057
38340455 Links ▼	7C	20685 Links ▼	UNIVERSITY 10	2507HA	SPRABERRY (TREND AREA) R 40 EXC	FDL OPERATING, LLC	REAGAN	Y	8195
38340457 Links ▼	7C	20685 Links ▼	UNIVERSITY 10	2506HS	SPRABERRY (TREND AREA) R 40 EXC	FDL OPERATING, LLC	REAGAN	Y	7695
38340458 Links ▼	7C	20685 Links ▼	UNIVERSITY 10	2502HA	SPRABERRY (TREND AREA) R 40 EXC	FDL OPERATING, LLC	REAGAN	Y	8240
38340463 Links ▼	7C	20685 Links ▼	UNIVERSITY 10	2501HS	SPRABERRY (TREND AREA) R 40 EXC	FDL OPERATING, LLC	REAGAN	Y	7843
38340464 Links ▼	7C	20685 Links ▼	UNIVERSITY 10	2503HK	SPRABERRY (TREND AREA) R 40 EXC	FDL OPERATING, LLC	REAGAN	Y	8655
38340465 Links ▼	7C	20685 Links ▼	UNIVERSITY 10	2508HK	SPRABERRY (TREND AREA) R 40 EXC	FDL OPERATING, LLC	REAGAN	Y	8640

Download

Return

Wellbore Query Results

Search Criteria:

District: 7C

Oil Lease No./Gas Well ID No: 17844

Lease Names: UNIVERSITY 10

Schedule Type: Current

[Return](#)

7 results

Page: 1 of 1

Page Size: View All ▾

API No.	District	Lease No.	Lease Name	Well No.	Field Name	Operator Name	County	On Schedule	API Depth
38340685 Links ▾	7C	17844 Links ▾	UNIVERSITY 10	3523HK	LIN (WOLFCAMP)	FDL OPERATING, LLC	REAGAN	Y	8332
38340686 Links ▾	7C	17844 Links ▾	UNIVERSITY 10	3527HA	LIN (WOLFCAMP)	FDL OPERATING, LLC	REAGAN	Y	7972
38340687 Links ▾	7C	17844 Links ▾	UNIVERSITY 10	3528HK	LIN (WOLFCAMP)	FDL OPERATING, LLC	REAGAN	Y	8290
38340688 Links ▾	7C	17844 Links ▾	UNIVERSITY 10	3512HA	LIN (WOLFCAMP)	FDL OPERATING, LLC	REAGAN	Y	7906
38340689 Links ▾	7C	17844 Links ▾	UNIVERSITY 10	3513HK	LIN (WOLFCAMP)	FDL OPERATING, LLC	REAGAN	Y	8347
38340690 Links ▾	7C	17844 Links ▾	UNIVERSITY 10	3507HA	LIN (WOLFCAMP)	FDL OPERATING, LLC	REAGAN	Y	1121
38340691 Links ▾	7C	17844 Links ▾	UNIVERSITY 10	3508HK	LIN (WOLFCAMP)	FDL OPERATING, LLC	REAGAN	Y	1138

[Download](#)[Return](#)

**RAILROAD COMMISSION OF TEXAS
HEARINGS DIVISION**

OIL AND GAS DOCKET NO. 7C-0322376

**APPLICATION OF SABLE PERMIAN RESOURCES, LLC (OPERATOR NO. 742251)
TO TRANSFER WELLS FROM THE LIN (WOLFCAMP) FIELD INTO THE
SPRABERRY (TREND AREA) FIELD AND FROM THE LIN (WOLFCAMP) FIELD
AND SPRABERRY (TREND AREA) FIELD INTO THE SPRABERRY (TREND AREA)
R 40 EXC FIELD, REAGAN, IRION, CROCKETT AND SCHLEICHER COUNTIES,
TEXAS**

FINAL ORDER

The Railroad Commission of Texas ("Commission") finds that after statutory notice in the above-numbered docket on the application made by Sable Permian Resources, LLC (Operator No. 742251) ("Sable") heard on November 7, 2019, the Technical Examiner and Administrative Law Judge have made and filed a report and recommendation ("Report") containing findings of fact and conclusions of law, for which service was not required; that the proposed application complies with all statutory requirements; and that this proceeding was duly submitted to the Commission at conference held in its offices in Austin, Texas.

The Commission, after consideration of this matter, hereby adopts as its own the findings of fact and conclusions of law contained in the Report and incorporates those findings of fact and conclusions of law as if fully set out and separately stated herein.

Therefore, it is **ORDERED** by the Commission that:

1. The 499 wells listed on Appendix A, attached hereto, be transferred out of the Lin (Wolfcamp) Field into the Spraberry (Trend Area) Field,
2. The 244 wells listed on Appendix B, attached hereto, be transferred out of the Lin (Wolfcamp) Field into the Spraberry (Trend Area) R 40 Exc Field, and
3. The 21 wells listed on Appendix C, attached hereto, be transferred out of the Spraberry (Trend Area) Field into the Spraberry (Trend Area) R 40 Exc Field.

It is **ORDERED** that no drilling permit applications and completion reports are required to be submitted by Sable to effectuate the well transfers subject to this docket.

Pursuant to § 2001.144(a)(4)(A) of the Texas Government Code, and by agreement of the parties in writing or on the record, the parties have waived right to file a motion for rehearing and this Final Order is final and effective on the date the Master Order relating to the Final Order is signed.

Signed on February 11, 2019.

RAILROAD COMMISSION OF TEXAS

(Order approved and signatures
affixed by Hearings Division's
Uncontested Master Order dated
February 11, 2019)

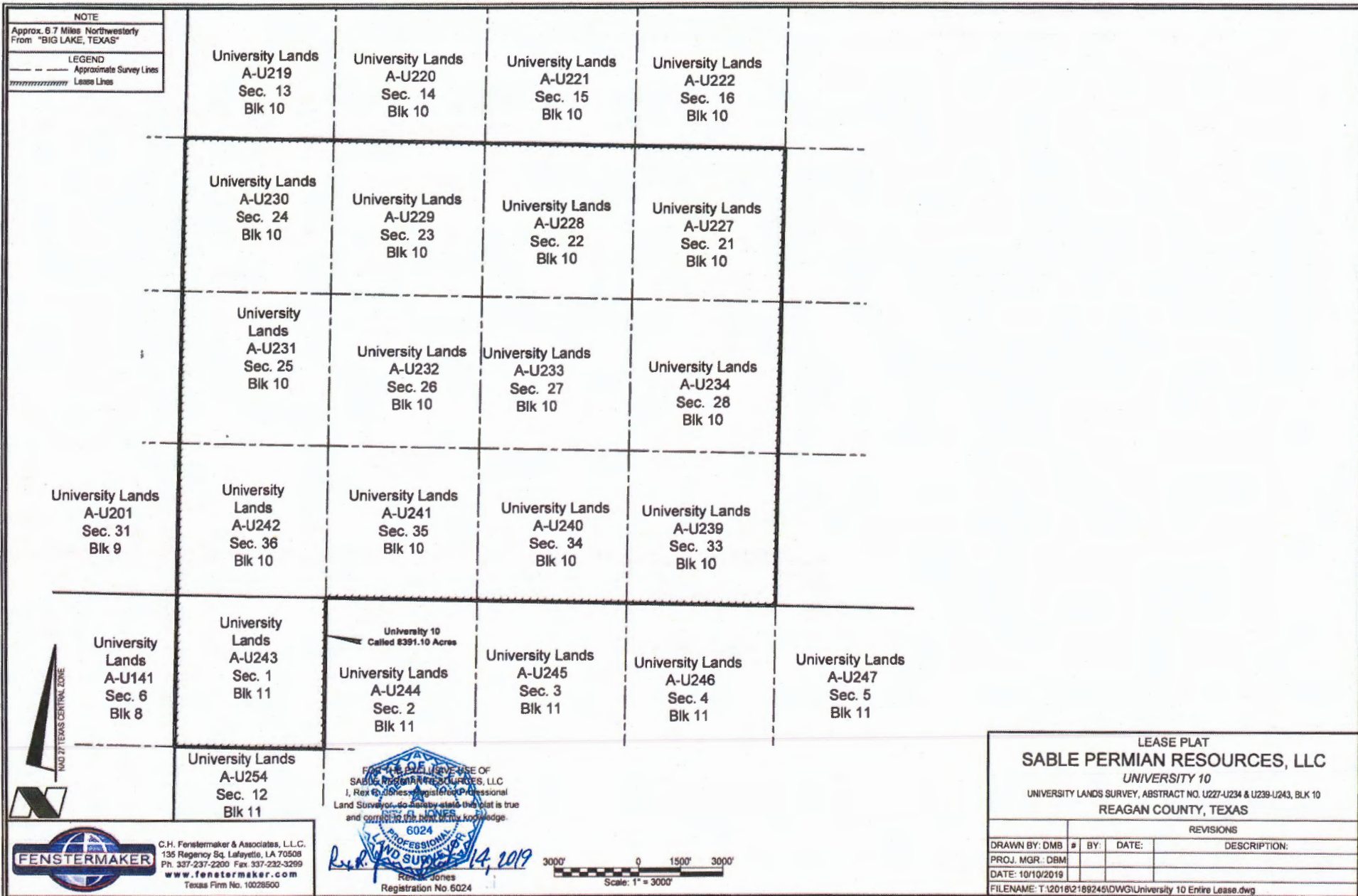
APPENDIX B OIL AND GAS DOCKET 7C-0322376 SABLE PERMIAN RESOURCES, LLC
TRANSFER FROM LIN (WOLFCAMP) FIELD TO SPRABERRY (TREND AREA) R40 EXC FIELD

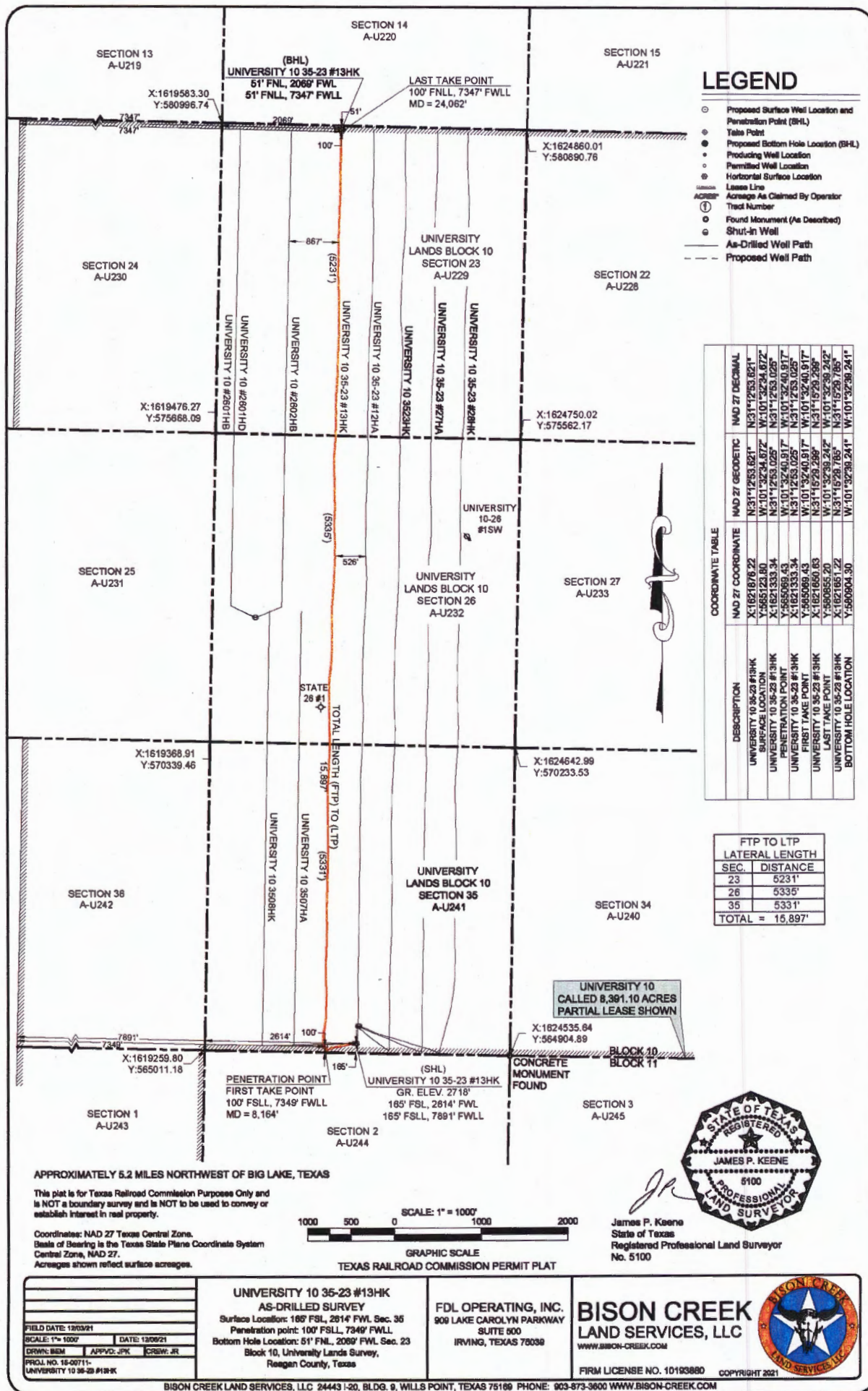
UNIVERSITY 9-31	17728	5H	LIN (WOLFCAMP)	383-38082	REAGAN
UNIVERSITY 9-31	17728	6H	LIN (WOLFCAMP)	383-38083	REAGAN
UNIVERSITY 9-31	17728	7H	LIN (WOLFCAMP)	383-38084	REAGAN
UNIVERSITY 9 31	17728	8HR	LIN (WOLFCAMP)	383-38404	REAGAN
UNIVERSITY 9 31	17728	9H	LIN (WOLFCAMP)	383-38086	REAGAN
UNIVERSITY 9 31	17728	10H	LIN (WOLFCAMP)	383-39908	REAGAN
UNIVERSITY 9 31	17728	0628HK	LIN (WOLFCAMP)	383-40478	REAGAN
UNIVERSITY 9 31	17728	0632HA	LIN (WOLFCAMP)	383-40477	REAGAN
UNIVERSITY 9 31	17728	0633HK	LIN (WOLFCAMP)	383-40476	REAGAN
UNIVERSITY 10	17844	2501HS	LIN (WOLFCAMP)	383-40463	REAGAN
UNIVERSITY 10	17844	2502HA	LIN (WOLFCAMP)	383-40458	REAGAN
UNIVERSITY 10	17844	2503HK	LIN (WOLFCAMP)	383-40464	REAGAN
UNIVERSITY 10	17844	2506HS	LIN (WOLFCAMP)	383-40457	REAGAN
UNIVERSITY 10	17844	2507HA	LIN (WOLFCAMP)	383-40455	REAGAN
UNIVERSITY 10	17844	2508HK	LIN (WOLFCAMP)	383-40465	REAGAN
UNIVERSITY 10	17844	2601HB	LIN (WOLFCAMP)	383-40271	REAGAN
UNIVERSITY 10	17844	2601HD	LIN (WOLFCAMP)	383-40178	REAGAN
UNIVERSITY 10	17844	2701H	LIN (WOLFCAMP)	383-38224	REAGAN
UNIVERSITY 10	17844	2702H	LIN (WOLFCAMP)	383-38227	REAGAN
UNIVERSITY 10	17844	2703H	LIN (WOLFCAMP)	383-38225	REAGAN
UNIVERSITY 10	17844	2704H	LIN (WOLFCAMP)	383-38226	REAGAN
UNIVERSITY 10	17844	2705H	LIN (WOLFCAMP)	383-38230	REAGAN
UNIVERSITY 10	17844	2706H	LIN (WOLFCAMP)	383-38228	REAGAN
UNIVERSITY 10	17844	2801HR	LIN (WOLFCAMP)	383-37619	REAGAN
UNIVERSITY 10	17844	2802H	LIN (WOLFCAMP)	383-37911	REAGAN
UNIVERSITY 10	17844	2803H	LIN (WOLFCAMP)	383-38215	REAGAN
UNIVERSITY 10	17844	2804H	LIN (WOLFCAMP)	383-38216	REAGAN
UNIVERSITY 10	17844	2805H	LIN (WOLFCAMP)	383-38217	REAGAN
UNIVERSITY 10	17844	2806H	LIN (WOLFCAMP)	383-38218	REAGAN
UNIVERSITY 10	17844	2807H	LIN (WOLFCAMP)	383-38219	REAGAN
UNIVERSITY 10	17844	2808H	LIN (WOLFCAMP)	383-38220	REAGAN
UNIVERSITY 10	17844	2812HC	LIN (WOLFCAMP)	383-40257	REAGAN
UNIVERSITY 10	17844	3601H	LIN (WOLFCAMP)	383-37818	REAGAN
UNIVERSITY 10	17844	3602H	LIN (WOLFCAMP)	383-38152	REAGAN

transferred administrative by

**APPENDIX B OIL AND GAS DOCKET 7C-0322376 SABLE PERMIAN RESOURCES, LLC
TRANSFER FROM LIN (WOLFCAMP) FIELD TO SPRABERRY (TREND AREA) R40 EXC FIELD**

UNIVERSITY 10	17844	3603H	LIN (WOLFCAMP)	383-38153	REAGAN
UNIVERSITY 10	17844	3604H	LIN (WOLFCAMP)	383-38154	REAGAN
UNIVERSITY 10	17844	3605H	LIN (WOLFCAMP)	383-38155	REAGAN
UNIVERSITY 10	17844	3606HR	LIN (WOLFCAMP)	383-38405	REAGAN
WOODS 211-218 ALLOC 00	N/A	03HK	LIN (WOLFCAMP)	383-40503	REAGAN
WOODS 211-218 ALLOC 01	N/A	02HA	LIN (WOLFCAMP)	383-40505	REAGAN
WOODS 211-218 ALLOC 00	N/A	01HS	LIN (WOLFCAMP)	383-40504	REAGAN
WOODS 211-218 ALLOC 02	20366	08HK	LIN (WOLFCAMP)	383-40501	REAGAN
WOODS 211-218 ALLOC 03	N/A	06HS	LIN (WOLFCAMP)	383-40502	REAGAN
WOODS 211-218 ALLOC 05	20362	16HS	LIN (WOLFCAMP)	383-40500	REAGAN
WOODS 211-218 ALLOC 06	N/A	17HA	LIN (WOLFCAMP)	383-40499	REAGAN
WOODS 211-218 ALLOC 07	20363	22HA	LIN (WOLFCAMP)	235-36376	IRION
WOODS 211-218 ALLOC 07	20363	21HS	LIN (WOLFCAMP)	235-36375	IRION
WOODS 211-218 ALLOC 09	20364	26HS	LIN (WOLFCAMP)	235-36371	IRION
WOODS 211-218 ALLOC 12	N/A	23HK	LIN (WOLFCAMP)	235-36374	IRION
WOODS 211-218 ALLOC 09	N/A	18HK	LIN (WOLFCAMP)	235-36373	IRION
WOODS 211-218 ALLOC 10	N/A	27HA	LIN (WOLFCAMP)	235-36372	IRION
WOODS 212-216	20113	2HA	LIN (WOLFCAMP)	235-36153	IRION
WOODS 212-217 ALLOC 00	20284	01HA	LIN (WOLFCAMP)	235-36315	IRION
WOODS 212-217 ALLOC 07	20343	04HT	LIN (WOLFCAMP)	235-36249	IRION
WOODS 212-217 ALLOC 07	20343	05HC	LIN (WOLFCAMP)	235-36316	IRION
WOODS 212-217 ALLOC 08	19879	06HS	LIN (WOLFCAMP)	235-36250	IRION
WOODS 212-217 ALLOC 08	19879	07HA	LIN (WOLFCAMP)	235-36317	IRION
WOODS 212-217 ALLOC 09	19881	09HT	LIN (WOLFCAMP)	235-36251	IRION
WOODS 212-217 ALLOC 09	19881	10HC	LIN (WOLFCAMP)	235-36318	IRION
WOODS 212-217 ALLOC 10	19857	11HS	LIN (WOLFCAMP)	235-36252	IRION
WOODS 212-217 ALLOC 10	19857	12HA	LIN (WOLFCAMP)	235-36319	IRION
WOODS 212-217 ALLOC 03	19858	14HT	LIN (WOLFCAMP)	235-36239	IRION
WOODS 212-217 ALLOC 03	19858	15HC	LIN (WOLFCAMP)	235-36320	IRION
WOODS 212-217 ALLOC 04	20339	16HS	LIN (WOLFCAMP)	235-36240	IRION
WOODS 212-217 ALLOC 04	20339	17HA	LIN (WOLFCAMP)	235-36321	IRION
WOODS 212-217 ALLOC 01	19940	19HT	LIN (WOLFCAMP)	235-36210	IRION
WOODS 212-217 ALLOC 01	19940	20HC	LIN (WOLFCAMP)	235-36322	IRION
WOODS 212-217 ALLOC 05	20292	21HS	LIN (WOLFCAMP)	235-36241	IRION





LEGEND

- Proposed Surface Well Location and Penetration Point (BHL)
- Take Point
- Proposed Bottom Hole Location (SHL)
- Producing Well Location
- Permitted Well Location
- Horizontal Surface Location
- Lease Line
- Acres As Claimed By Operator
- Tract Number
- Found Monument (As Described)
- Shut-In Well
- As-Drilled Well Path
- Proposed Well Path

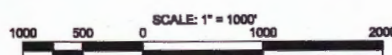
DESCRIPTION	NAD 27 COORDINATE	NAD 27 GEODETIC	NAD 27 DECIMAL
UNIVERSITY 10 35-23 #13HK SURFACE LOCATION	X:1621676.22 Y:56523.80	N:31°12'53.621" W:101°32'34.672"	N:31°12'53.621" W:101°32'34.672"
UNIVERSITY 10 35-23 #13HK PENETRATION POINT	X:1621333.34 Y:56523.80	N:31°12'53.621" W:101°32'34.672"	N:31°12'53.621" W:101°32'34.672"
UNIVERSITY 10 35-23 #13HK FIRST TAKE POINT	X:1621333.34 Y:56523.80	N:31°12'53.621" W:101°32'34.672"	N:31°12'53.621" W:101°32'34.672"
UNIVERSITY 10 35-23 #13HK LAST TAKE POINT	X:1621655.20 Y:56523.80	N:31°12'53.621" W:101°32'34.672"	N:31°12'53.621" W:101°32'34.672"
UNIVERSITY 10 35-23 #13HK BOTTOM HOLE LOCATION	X:1621651.22 Y:56523.80	N:31°12'53.621" W:101°32'34.672"	N:31°12'53.621" W:101°32'34.672"

SEC.	DISTANCE
23	6231'
26	5335'
35	5331'
TOTAL	= 15,897'

APPROXIMATELY 5.2 MILES NORTHWEST OF BIG LAKE, TEXAS

This plat is for Texas Railroad Commission Purposes Only and is NOT a boundary survey and is NOT to be used to convey or establish interest in real property.

Coordinates: NAD 27 Texas Central Zone.
Basis of Bearing is the Texas State Plane Coordinate System
Central Zone, NAD 27.
Acresages shown reflect surface acresages.



GRAPHIC SCALE
TEXAS RAILROAD COMMISSION PERMIT PLAT

FIELD DATE: 12/03/21	DATE: 12/03/21
SCALE: 1"=1000'	DATE: 12/03/21
DRWN: BEM	APPR: JPK
PRCL NO. 15-00711-	CRCW: JR
UNIVERSITY 10 35-23 #13HK	

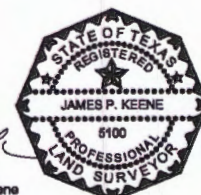
UNIVERSITY 10 35-23 #13HK
AS-DRILLED SURVEY
Surface Location: 165° FSL, 2614' FWL Sec. 35
Penetration point: 100° FSL, 7349' FWL
Bottom Hole Location: 51° FNL, 2069' FWL Sec. 23
Block 10, University Lands Survey,
Reagan County, Texas

FDL OPERATING, INC.
909 LAKE CAROLYN PARKWAY
SUITE 600
IRVING, TEXAS 75038

BISON CREEK
LAND SERVICES, LLC
WWW.BISON-CREEK.COM

FIRM LICENSE NO. 10193680 COPYRIGHT 2021

BISON CREEK LAND SERVICES, LLC 24443 I-20, BLDG. 9, WILLS POINT, TEXAS 75169 PHONE: 903-873-3600 WWW.BISON-CREEK.COM



James P. Keene
State of Texas
Registered Professional Land Surveyor
No. 5100

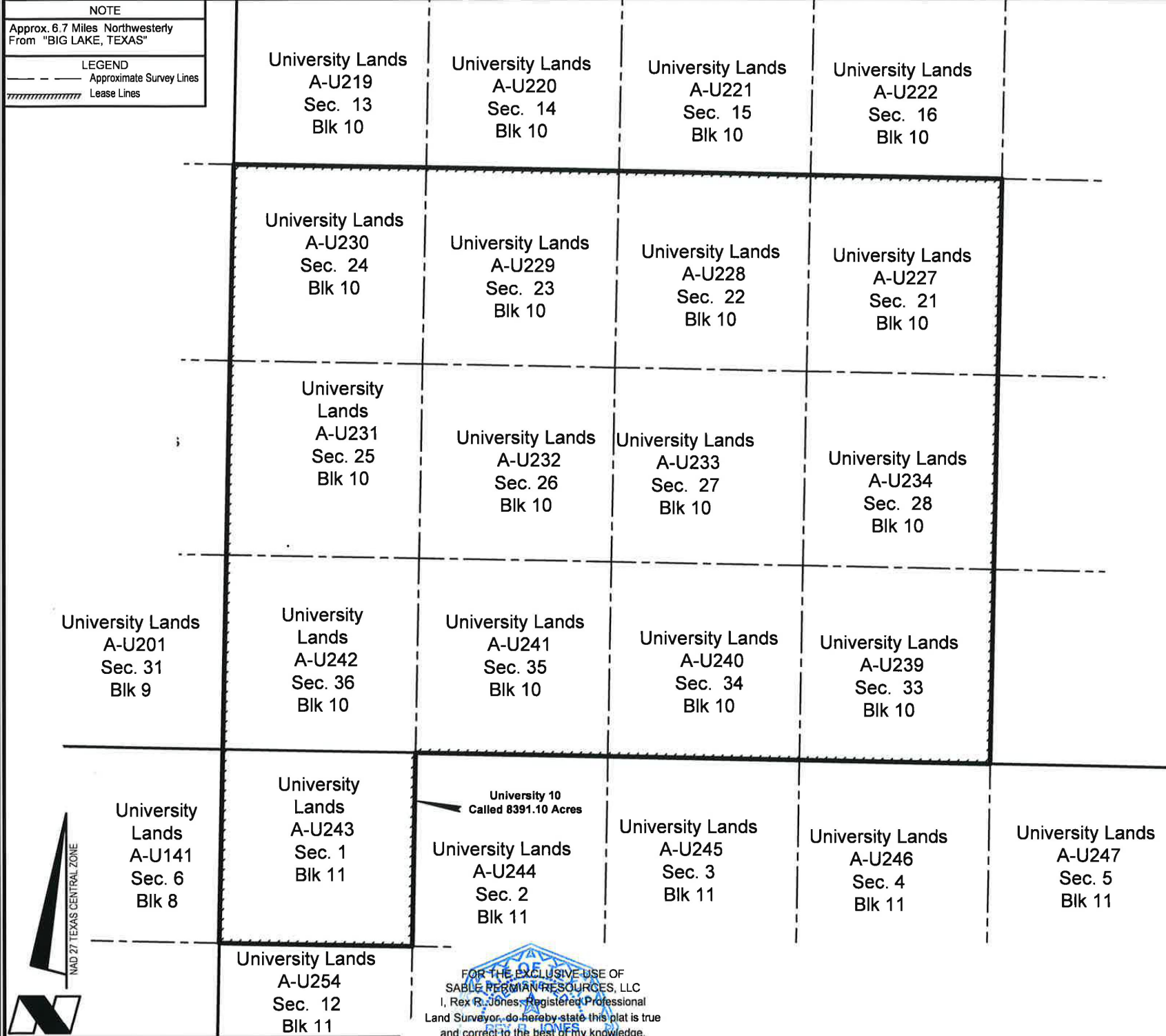
NOTE

Approx. 6.7 Miles Northwesterly From "BIG LAKE, TEXAS"

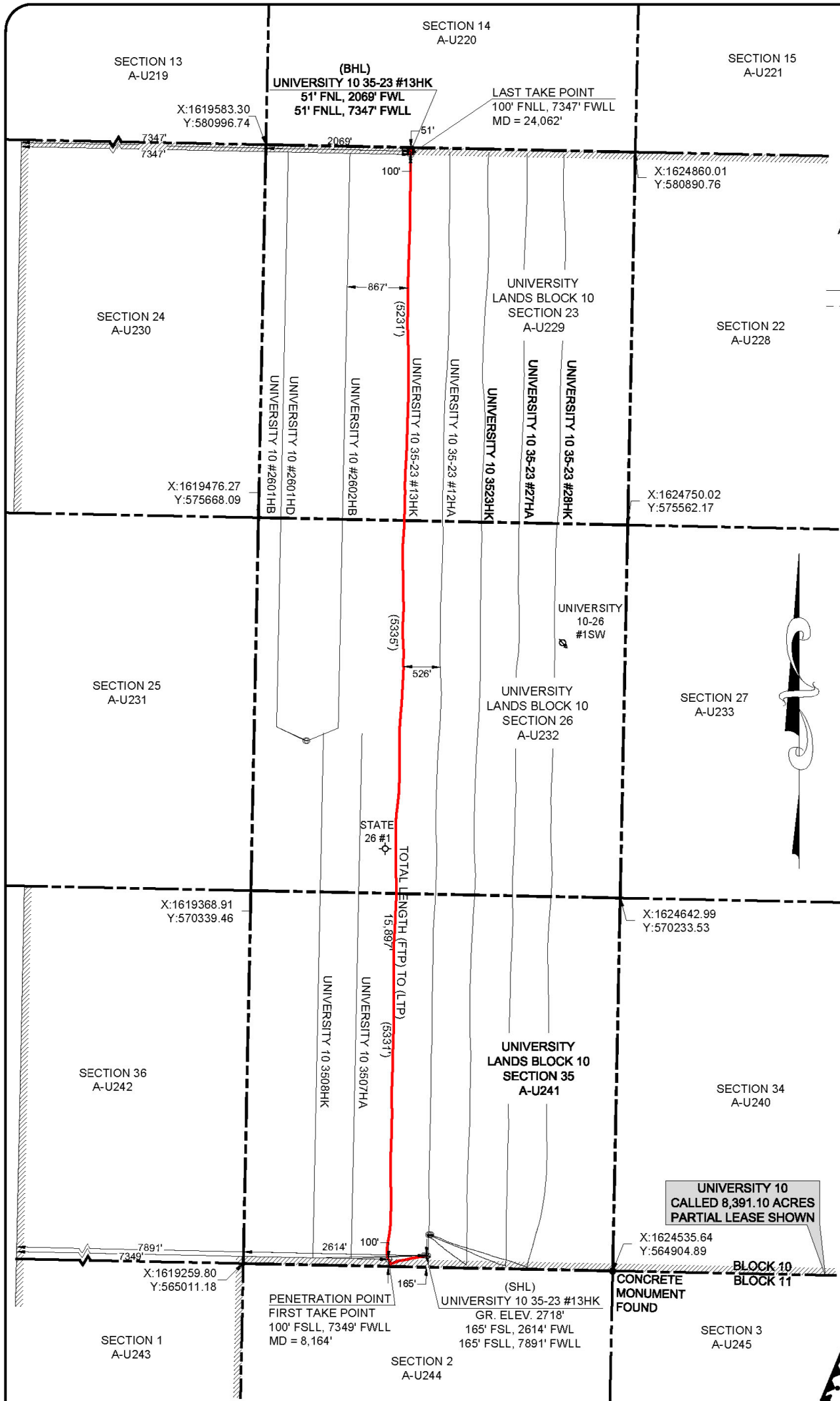
LEGEND

Approximate Survey Lines

Lease Lines



LEASE PLAT				
SABLE PERMIAN RESOURCES, LLC				
UNIVERSITY 10				
UNIVERSITY LANDS SURVEY, ABSTRACT NO. U227-U234 & U239-U243, BLK 10				
REAGAN COUNTY, TEXAS				
REVISIONS				
DRAWN BY: DMB	#	BY:	DATE:	DESCRIPTION:
PROJ. MGR.: DBM				
DATE: 10/10/2019				
FILENAME: T:\2018\3180246\DWG\University 10 Entire Lease.dwg				



LEGEND

○

⊕

●

●

○

○

①

○

○

○

Proposed Surface Well Location and Penetration Point (SHL)

Take Point

Proposed Bottom Hole Location (BHL)

Producing Well Location

Permitted Well Location

Horizontal Surface Location

Lease Line

Acres As Claimed By Operator

Tract Number

Found Monument (As Described)

Shut-in Well

As-Drilled Well Path

Proposed Well Path

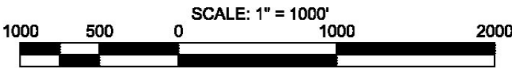
COORDINATE TABLE		
DESCRIPTION	NAD 27 COORDINATE	NAD 27 DECIMAL
UNIVERSITY 10 35-23 #13HK SURFACE LOCATION	N:31°12'53.621" W:101°32'34.672"	N:31°12'53.621" W:101°32'34.672"
UNIVERSITY 10 35-23 #13HK PENETRATION POINT	N:31°12'53.025" W:101°32'40.917"	N:31°12'53.025" W:101°32'40.917"
UNIVERSITY 10 35-23 #13HK FIRST TAKE POINT	N:31°12'53.025" W:101°32'40.917"	N:31°12'53.025" W:101°32'40.917"
UNIVERSITY 10 35-23 #13HK LAST TAKE POINT	N:31°15'29.299" W:101°32'39.242"	N:31°15'29.299" W:101°32'39.242"
UNIVERSITY 10 35-23 #13HK BOTTOM HOLE LOCATION	N:31°15'29.785" W:101°32'39.241"	N:31°15'29.785" W:101°32'39.241"

FTP TO LTP LATERAL LENGTH	
SEC.	DISTANCE
23	5231'
26	5335'
35	5331'
TOTAL = 15,897'	

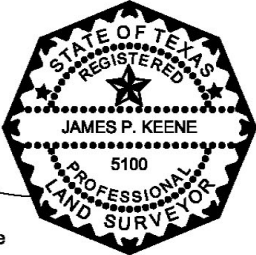
APPROXIMATELY 5.2 MILES NORTHWEST OF BIG LAKE, TEXAS

This plat is for Texas Railroad Commission Purposes Only and is NOT a boundary survey and is NOT to be used to convey or establish interest in real property.

Coordinates: NAD 27 Texas Central Zone.
Basis of Bearing is the Texas State Plane Coordinate System Central Zone, NAD 27.
Acres shown reflect surface acreages.



GRAPHIC SCALE TEXAS RAILROAD COMMISSION PERMIT PLAT



James P. Keene
State of Texas
Registered Professional Land Surveyor
No. 5100

FIELD DATE: 12/03/21
SCALE: 1"= 1000'
DATE: 12/06/21
DRWN: BEM
APPVD: JPK
CREW: JR
PROJ. NO. 15-00711-
UNIVERSITY 10 35-23 #13HK

UNIVERSITY 10 35-23 #13HK
AS-DRILLED SURVEY
Surface Location: 165' FSL, 2614' FWL Sec. 35
Penetration point: 100' FSL, 7349' FWLL
Bottom Hole Location: 51' FNL, 2069' FWL Sec. 23
Block 10, University Lands Survey,
Reagan County, Texas

FDL OPERATING, INC.
909 LAKE CAROLYN PARKWAY
SUITE 500
IRVING, TEXAS 75039

BISON CREEK
LAND SERVICES, LLC
WWW.BISON-CREEK.COM

FIRM LICENSE NO. 10193880 COPYRIGHT 2021

