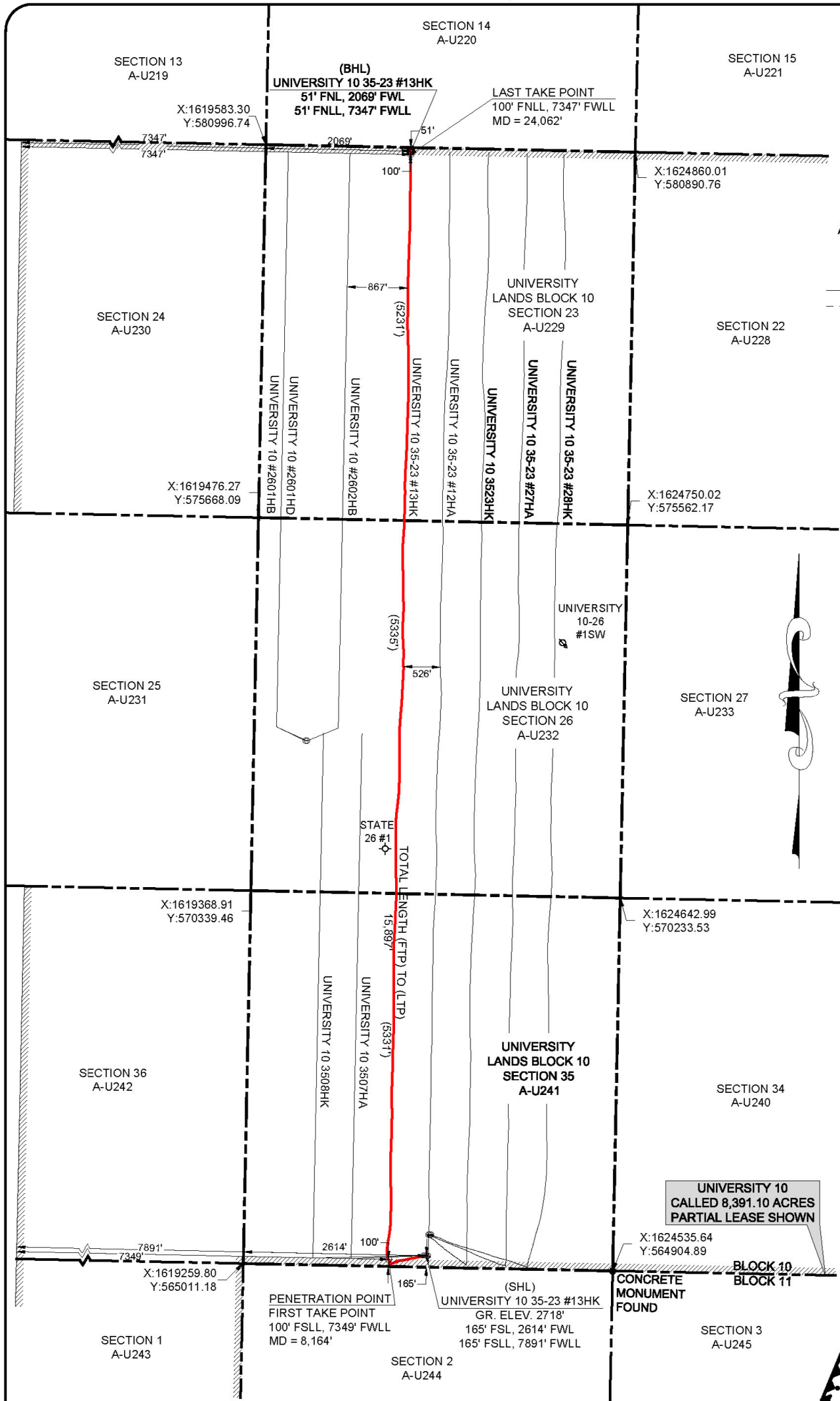


Well name should be University 10 3513HK



LEGEND

○

⊕

●

●

○

○

①

○

○

—

Proposed Surface Well Location and Penetration Point (SHL)

Take Point

Proposed Bottom Hole Location (BHL)

Producing Well Location

Permitted Well Location

Horizontal Surface Location

Lease Line

Acres As Claimed By Operator

Tract Number

Found Monument (As Described)

Shut-in Well

As-Drilled Well Path

Proposed Well Path

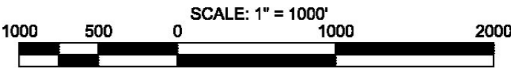
DESCRIPTION	COORDINATE TABLE	
	NAD 27 COORDINATE	NAD 27 DECIMAL
UNIVERSITY 10 35-23 #13HK SURFACE LOCATION	N:31°12'53.621" W:101°32'34.672"	N:31°12'53.621" W:101°32'34.672"
UNIVERSITY 10 35-23 #13HK PENETRATION POINT	N:31°12'53.025" W:101°32'40.917"	N:31°12'53.025" W:101°32'40.917"
UNIVERSITY 10 35-23 #13HK FIRST TAKE POINT	N:31°12'53.025" W:101°32'40.917"	N:31°12'53.025" W:101°32'40.917"
UNIVERSITY 10 35-23 #13HK LAST TAKE POINT	N:31°15'29.299" W:101°32'39.242"	N:31°15'29.299" W:101°32'39.242"
UNIVERSITY 10 35-23 #13HK BOTTOM HOLE LOCATION	N:31°15'29.785" W:101°32'39.241"	N:31°15'29.785" W:101°32'39.241"

FTP TO LTP LATERAL LENGTH	
SEC.	DISTANCE
23	5231'
26	5335'
35	5331'
TOTAL = 15,897'	

APPROXIMATELY 5.2 MILES NORTHWEST OF BIG LAKE, TEXAS

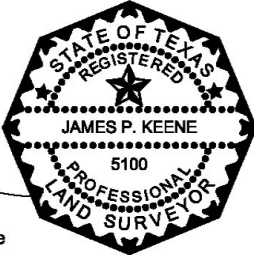
This plat is for Texas Railroad Commission Purposes Only and is NOT a boundary survey and is NOT to be used to convey or establish interest in real property.

Coordinates: NAD 27 Texas Central Zone.
Basis of Bearing is the Texas State Plane Coordinate System Central Zone, NAD 27.
Acres shown reflect surface acreages.



GRAPHIC SCALE
TEXAS RAILROAD COMMISSION PERMIT PLAT

James P. Keene
State of Texas
Registered Professional Land Surveyor
No. 5100



FIELD DATE: 12/03/21	DATE: 12/06/21
SCALE: 1"= 1000'	APPVD: JPK
DRWN: BEM	CREW: JR
PROJ. NO. 15-00711-	
UNIVERSITY 10 35-23 #13HK	

UNIVERSITY 10 35-23 #13HK
AS-DRILLED SURVEY
Surface Location: 165' FSL, 2614' FWL Sec. 35
Penetration point: 100' FSL, 7349' FWLL
Bottom Hole Location: 51' FNL, 2069' FWL Sec. 23
Block 10, University Lands Survey,
Reagan County, Texas

FDL OPERATING, INC.
909 LAKE CAROLYN PARKWAY
SUITE 500
IRVING, TEXAS 75039

BISON CREEK
LAND SERVICES, LLC
WWW.BISON-CREEK.COM

FIRM LICENSE NO. 10193880 COPYRIGHT 2021

