

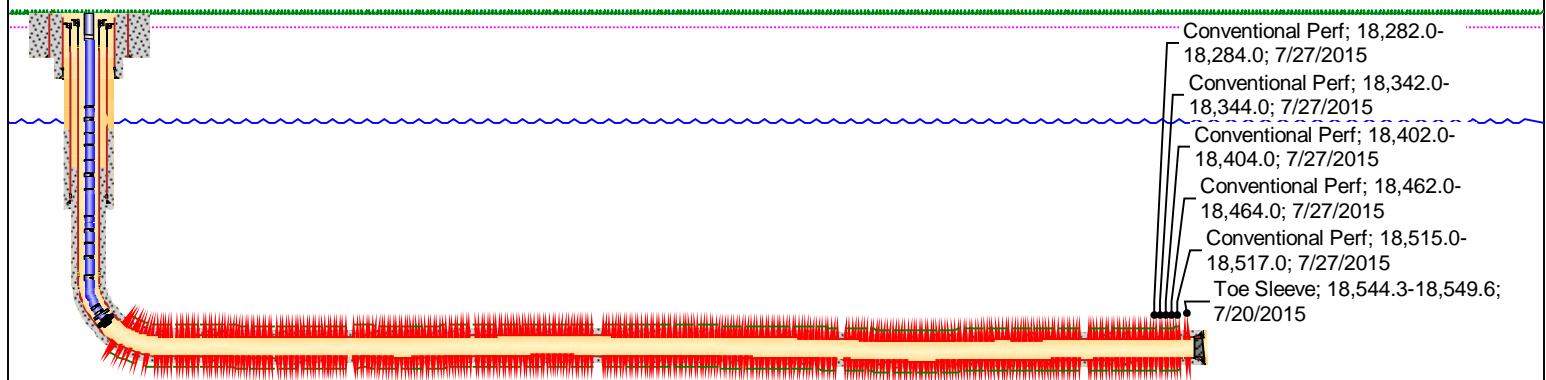
# UNIVERSITY 2-20 64H

## API #42-383-39266-0000, REAGAN CO, TX

Property Sub 927351-064	Open Formation WOLFCAMP B2 (WFMP B2)	Spud Date 5/23/2015	Frac Date 7/27/2015	On Prod Date 8/27/2015	Surface Legal Location	Latitude (°) 31.281811	Longitude (°) -101.744937
Ground Elevation (ft) 2,647.00	Orig KB Elev (ft) 2,673.50	KB-Grd (ft) 26.50	Total Depth (ftKB) 18,698.0	Total Depth All (TVD) (ftKB) Original - 8,479.2	Well Profile HORIZONTAL		

HORIZONTAL - Original, 11/20/2015 10:31:15 AM

Directional schematic (actual)



### Openhole Detail

Section Des	Size (in)	Act Top (ftKB)	Act Btm (ftKB)
Surface	17 1/2	126.5	625.0
Intermediate	12 1/4	625.0	5,212.0
Production	8 1/2	5,212.0	18,698.0

### Vertical/Lateral Lengths

Vert Len (ft)	Curve Len (ft)	Lat Len (ft)
7,850.0	980.0	9,868

### Kick-off Point

Top Depth (ftKB)
7,850.0

### Casing Detail

Description	OD (in)	Wt/Len (lb/ft)	Grade	Top Thread	ID (in)	Set Depth (ftKB)
Surface	13 3/8	54.50	J-55	Buttress Thread	12.62	625.0
Intermediate	9 5/8	40.00	L-80	Buttress Thread	8.84	5,198.2
Production	5 1/2	20.00	P-110	Buttress Thread	4.78	18,685.9

### Production Casing Cement Detail

Fluid	Class	Amount (sacks)	Vol Pumped (bbl)	Est Top (ftKB)
MudPush	Mud Push	0	50.0	3,123.0
Lead Cmt	TXI LITEWEIGHT	412	160.0	4,200.0
Tail Cmt	TXI LITEWEIGHT	1,728	503.0	7,500.0
Dsplmt	Water	0		18,685.0

### Cement Detail

Stg No.	Des	Top (ftKB)	Btm (ftKB)	Top Meas Meth
1	Surface Casing Cement	26.5	625.0	Returns to Surface
1	Intermediate Casing Cement	2,950.0	5,198.2	Volume Calculations
1	Production Casing Cement	4,200.0	18,686.0	Volume Calculations

### Tubing Detail

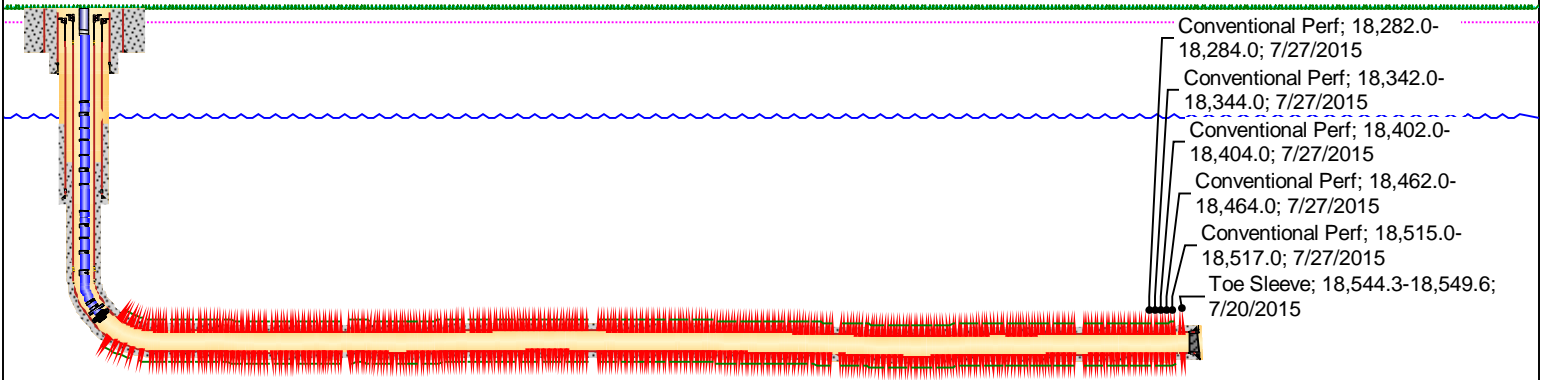
Jts	OD (in)	Wt (lb/ft)	Grade	ID (in)	Len (ft)	Top (ftKB)	Item Des
1	2 3/8	4.00	L-80	2.00	32.58	26.5	Tubing
1	2 3/8	4.00	L-80	2.00	4.00	59.1	Tubing Pup Joint
1	2 3/8	4.00	L-80	2.00	3.00	63.1	Tubing Pup Joint
59	2 3/8	4.00	L-80	2.00	1,923.30	66.1	Tubing
1	2 3/8	4.00	L-80	2.00	4.10	1,989.4	Gas Lift Valve #13

# UNIVERSITY 2-20 64H

## API #42-383-39266-0000, REAGAN CO, TX

HORIZONTAL - Original, 11/20/2015 10:31:28 AM

Directional schematic (actual)



### Tubing Detail

Jts	OD (in)	Wt (lb/ft)	Grade	ID (in)	Len (ft)	Top (ftKB)	Item Des
15	2 3/8	4.00	L-80	2.00	489.02	1,993.5	Tubing
1	2 3/8	4.00	L-80	2.00	4.10	2,482.5	Gas Lift Valve #12
16	2 3/8	4.00	L-80	2.00	521.54	2,486.6	Tubing
1	2 3/8	4.00	L-80	2.00	4.00	3,008.2	Gas Lift Valve #11
15	2 3/8	4.00	L-80	2.00	488.93	3,012.2	Tubing
1	2 3/8	4.00	L-80	2.00	4.10	3,501.1	Gas Lift Valve #10
16	2 3/8	4.00	L-80	2.00	521.76	3,505.2	Tubing
1	2 3/8	4.00	L-80	2.00	4.10	4,026.9	Gas Lift Valve #9
15	2 3/8	4.00	L-80	2.00	489.17	4,031.0	Tubing
1	2 3/8	4.00	L-80	2.00	4.10	4,520.2	Gas Lift Valve #8
16	2 3/8	4.00	L-80	2.00	521.75	4,524.3	Tubing
1	2 3/8	4.00	L-80	2.00	4.10	5,046.1	Gas Lift Valve #7
15	2 3/8	4.00	L-80	2.00	489.03	5,050.2	Tubing
1	2 3/8	4.00	L-80	2.00	4.10	5,539.2	Gas Lift Valve #6
16	2 3/8	4.00	L-80	2.00	521.85	5,543.3	Tubing
1	2 3/8	4.00	L-80	2.00	4.10	6,065.1	Gas Lift Valve #5
15	2 3/8	4.00	L-80	2.00	489.19	6,069.2	Tubing
1	2 3/8	4.00	L-80	2.00	4.10	6,558.4	Gas Lift Valve #4
17	2 3/8	4.00	L-80	2.00	551.87	6,562.5	Tubing
1	2 3/8	4.00	L-80	2.00	4.10	7,114.4	Gas Lift Valve #3
17	2 3/8	4.00	L-80	2.00	554.12	7,118.5	Tubing
1	2 3/8	4.00	L-80	2.00	4.10	7,672.6	Gas Lift Valve #2
17	2 3/8	4.00	L-80	2.00	554.40	7,676.7	Tubing
1	2 3/8	4.00	L-80	1.88	0.90	8,231.1	Profile Nipple X
1	2 3/8	4.00	L-80	2.00	32.59	8,232.0	Tubing
1	2 3/8	4.00	L-80	2.00	4.10	8,264.6	Gas Lift Valve #1
1	4.17		L-80	2.00	7.33	8,268.7	GOPC
1	2 3/8	4.00	L-80	2.00	32.70	8,276.0	Tubing
1	2 3/8			2.00	1.50	8,308.7	On-Off Tool
1	4 5/8			2.00	7.20	8,310.2	Packer
1	2 3/8		L-80	2.00	0.45	8,317.4	POP