

## RAILROAD COMMISSION OF TEXAS

## Oil and Gas Division

Tracking No.: 107417

Status: Submitted

This facsimile W-2 was generated electronically  
from data submitted to the RRC.

API No. 42- 383-38628

7. RRC District No.

7C

8. RRC Lease No.


## Oil Well Potential Test, Completion or Recompletion Report, and Log


1. FIELD NAME (as per RRC Records or Wildcat) LIN (WOLFCAMP)		2. LEASE NAME UNIVERSITY 49-1		9. Well No. 6H	
3. OPERATOR'S NAME (Exactly as shown on Form P-5, Organization Report) DEVON ENERGY PRODUCTION CO, L.P.		RRC Operator No. 216378		10. County of well site REAGAN	
4. ADDRESS ATTN VICTORIA SANCHEZ 333 WEST SHERIDAN AVE OKLAHOMA CITY, OK 73102-5010				11. Purpose of filing Initial Potential <input checked="" type="checkbox"/> Retest <input type="checkbox"/> Reclass <input type="checkbox"/> Well record only (Explain in remarks) <input type="checkbox"/>	
5. If Operator has changed within last 60 days, name former operator					
6a. Location (Section, Block, and Survey) 1, 49, UNIVERSITY LAND		6b. Distance and direction to nearest town in this county. BIG LAKE			
12. If workover or reclass, give former field (with reservoir) & Gas ID or oil lease no. FIELD & RESERVOIR N/A			GAS ID or OIL LEASE #	Oil-O Gas-G	Well #
13. Type of electric or other log run None			14. Completion or recompletion date 05/24/2014		

## SECTION I- POTENTIAL TEST DATA IMPORTANT: Test should be for 24 hours unless otherwise specified infield rules.

15. Date of test 06/07/2014	16. No. of hours tested 24	17. Production method (Flowing, Gas Lift, Jetting, Pumping- Size & Type of pump) Gas Lift			18. Choke size
19. Production during Test Period	Oil - BBLS 200.0	Gas - MCF 19	Water - BBLS 593	Gas - Oil Ratio 95	Flowing Tubing Pressure 150.0 PSI
20. Calculated 24- Hour Rate	Oil - BBLS 200.0	Gas - MCF 19	Water - BBLS 593	Oil Gravity-API-60° 37.0	Casing Pressure 1020.0 PSI
21. Was swab used during this test? Yes <input type="checkbox"/> No <input checked="" type="checkbox"/>		22. Oil produced prior to test (New & Reworked wells) 1532.192			23. Injection Gas-Oil Ratio
REMARKS: N/A					

INSTRUCTIONS: File an original and one copy of the completed Form W-2 in the appropriate RRC District Office within 30 days after completing a well and within 10 days after a potential test. If an operator does not properly report the results of a potential test within the 10-day period, the effective date of the allowable assigned to the well will not extend back more than 10 days before the W-2 was received in the District Office. (Statewide Rules 16 and 51) To report a completion or recompletion, fill in both sides of this form. To report a retest, fill in only the front side.

	<b>WELL TESTERS CERTIFICATION</b>		
	I declare under penalties prescribed in Sec. 91.143, Texas Natural Resources Code, that I conducted or supervised this test by observation of (a) meter readings or (b) the top and bottom gauges of each tank into which production was run during the test. I further certify that the potential test data shown above is true, correct, and complete, to the best of my knowledge.		
Signature: Well Tester		Name of Company	RRC Representative

	<b>OPERATOR'S CERTIFICATION</b>	
	I declare under penalties prescribed in Sec. 91.143, Texas Natural Resources Code, that I am authorized to make this report, that this report was prepared by me or under my supervision and direction, and that data and facts stated therein are true, correct and complete, to the best of my knowledge.	
DEVON ENERGY PRODUCTION CO, L.P.		Regulatory Specialist
Type or printed name of operator's representative		Title of Person
(405) 228-4248		Patti Riechers
Telephone: Area Code      Number      Month      Day      Year		Signature

## SECTION III

## DATA ON WELL COMPLETION AND LOG (Not Required on Retest)

## 24. Type of Completion

New Well ☒ Deepening ☐ Plug Back ☐ Other ☐

26. Notice of Intention to Drill this well was filed in Name of  
**DEVON ENERGY PRODUCTION CO, L.P.**

27. Number of producing wells on this lease in this field (reservoir) including this well

2

28. Total number of acres in this lease

668.8

29. Date Plug Back, Deepening, Workover or Drilling Operations:

Commenced  
03/31/2014

Completed  
04/22/2014

30. Distance to nearest well, Same Lease & Reservoir  
930.0

31. Location of well, relative to nearest lease boundaries

200.0

Feet From South

Line and 827.0

Feet from

East

Line of the UNIVERSITY 49-1

Lease

32. Elevation (DF, RKB, RT, GR ETC.)

2761

GR

33. Was directional survey made other than inclination (Form W-12)?



Yes



No

34. Top of Pay

35. Total Depth  
7089 MD:12062

36. P. B. Depth  
7089 MD:12006

37. Surface Casing Determined by

Field Rules ☐

Recommendation of T.D.W.R. ☒

Railroad Commission (Special) ☐

Dt. of Letter 01/31/2014

38. Is well multiple completion?



Yes



No

39. If multiple completion, list all reservoir names (completions in this well) and Oil Lease or Gas ID No.

FIELD &amp; RESERVOIR

N/A

GAS ID or  
OIL LEASE #

Oil-G  
Gas-G

Well #

40. Intervals Drilled by:

Rotary Tools ☒

Cable Tools ☐

41. Name of Drilling Contractor

42. Is Cementing Affidavit Attached?



Yes



No

## 43. CASING RECORD (Report All Strings Set in Well)

CASING SIZE	WT #/FT.	DEPTH SET	MULTISTAGE TOOL DEPTH	TYPE & AMOUNT CEMENT (sacks)	HOLE SIZE	TOP OF CEMENT	SLURRY VOL. cu. ft.
13 3/8		1034		C 1485	18 1/4	0	2248.0
9 5/8		4612	2486	C 705	12 1/4	2486	972.0
9 5/8		2486		C 625	12 1/4	0	1000.0
5 1/2		12055		H 2110	8 3/4	0	3570.0

## 44. LINER RECORD

Size	Top	Bottom	Sacks Cement	Screen
N/A				

## 45. TUBING RECORD

Size	Depth Set	Packer Set	From	To
2 7/8	7354		L1 7457	11899
			From	To
			From	To
			From	To

46. Producing Interval (this completion) Indicate depth of perforation or open hole

## 47. ACID, SHOT, FRACTURE, CEMENT SQUEEZE, ETC.

Depth Interval	Amount and Kind of Material Used
7457.0 11899.0	108,410 BBLS FRAC FLUID AND 4,528,526 LBS PROPPANT

## 48. FORMATION RECORD (LIST DEPTHS OF PRINCIPAL GEOLOGICAL MARKERS AND FORMATION TOPS)

Formations	Depth	Formations	Depth
STRAWN		SAN ANDRES - SALTWATER FLOW, POSSIBLY HEAVY	2500.0 MD: 2500.0
FUSSELMAN		CLEARFORK	4000.0 MD: 4000.0
ELLENBURGER		SPRABERRY	5700.0 MD: 5700.0
GRAYBURG	1700.0 MD: 1700.0	DEAN	6477.0 MD: 6492.0
QUEEN	1800.0 MD: 1800.0	WOLFCAMP	6609.0 MD: 6626.0

REMARKS: CEMENT WAS NOT CIRCULATED INITIALLY FOR SURFACE CASING. TOP OFF WAS DONE WITH 200 SKS CMT. DISTANCE TO NEAREST WELL HAS CHANGED FROM 900' TO 912'. ACREAGE FOR LEASE CHANGED FROM 334.40 TO 668.80. KOP IS @ 6609'.

1 58Cement: Fill in shaded areas.  
Operator: Fill in other items.

RAILROAD COMMISSION OF TEXAS  
Oil and Gas Division

Form W-15  
Cementing Report  
Rev. 4/1/83  
483-045

RECEIVED

Tracking #107417

1. Operator's Name (As shown on Form P-5, Organization Report) <b>Devon Energy Production Co., L.P.</b>	2. RRC Operator No. <b>216378</b>	3. RRC District No. <b>7C</b>	4. County of Well Site <b>REAGAN</b>
5. Field Name (Wildcat or exactly as shown on RRC Records) <b>Lin (Wolfcamp)</b>		6. API No. <b>42-383-38428</b>	7. Drilling Permit No. <b>777679</b>
8. Lease Name <b>UNIVERSITY 49-1</b>	9. Rule 37 Case No.	10. Oil Lease/Gas ID No.	11. Well No. <b>6H</b>

CASING CEMENTING DATA:		Surface Casing	INTER-MEDIATE CASING	PRODUCTION CASING		MULTI-STAGE CEMENTING PROCESS	
				Single String	Multiple Parallel Strings	Tool	Shoe
12. Cementing Date		4/3/14					
13. • Drilled Hole Size		18 1/4"					
• Est. % wash or hole enlargement							
14. Size of casing (in. O.D.)		13 3/8"					
15. Top of liner (ft.)							
16. Setting depth (ft.)		1034'					
17. Number of centralizers used		9					
18. Hrs. Waiting on cement before drill-out		8+					
1 <sup>st</sup> Slurry	19. API cement used: No. of sacks ▶	1285					
	Class ▶	"C"					
	Additives ▶	#22					
2 <sup>nd</sup> Slurry	No. of sacks ▶						
	Class ▶						
	Additives ▶						
3 <sup>rd</sup> Slurry	Class ▶						
	Additives ▶						
1st	20. Slurry pumped: Volume (cu. ft.) ▶	2248					
	Height (ft.) ▶	2673					
2nd	Volume (cu. ft.) ▶						
	Height (ft.) ▶						
3rd	Volume (cu. ft.) ▶						
	Height (ft.) ▶						
Total	Volume (cu. ft.) ▶	2248					
	Height (ft.) ▶	2673					
21. Was cement circulated to ground surface (or bottom of cellar) outside casing ?		NO					
22. Remarks: SLURRY- C+2%CACL2+4%GEL+.125PPSCELLOFLAKE+.01%STATICFREE TOP OUT WITH ONE INCH @ 14.8 PPG ( 200 SACKS )							



CEMENTING TO PLUG AND ABANDON	PLUG #1	PLUG #2	PLUG #3	PLUG #4	PLUG #5	PLUG #6	PLUG #7	PLUG #8
23. Cementing date								
24. Size of hole or pipe plugged (in.)								
25. Depth to bottom of tubing or drill pipe (ft.)								
26. Sacks of cement used (each plug)								
27. Slurry volume pumped (cu. ft.)								
28. Calculated top of plug (ft.)								
29. Measured top of plug, if tagged (ft.)								
30. Slurry wt. (lb/gal)								
31. Type cement								

CEMENTER'S CERTIFICATE: I declare under penalties in Sec. 91.143, Texas Natural Resources Code, that I am authorized to make this Certification, that the cementing of casing and/or the placing of cement plugs in this well as shown in the report was performed by me or under my Supervision, and that the cementing data and facts presented on both sides of this form are true, correct, and complete, to the best of my knowledge. This certification covers cementing data only.

**JERRY LAWLER, Service Supervisor**

Name and title of cementer's representative

**BAKER HUGHES INC.**

Cementing Company

Signature

P.O. Box 1135

Address

Eldorado

City,

Texas

State,

76936

Zip Code

(325) 853-2553

Tel.: Area Code Number

4/3/14

Date: mo. day yr.

OPERATOR'S CERTIFICATE: I declare under penalties prescribed in Sec. 91.143, Texas Natural Resources Code, that I am authorized to make this certification, that I have knowledge of the well data and information presented in this report, and that data and facts presented on both sides of this form are true, correct, and complete, to the best of my knowledge. This certification covers all well data.

**Patti Diechers**

Typed or printed name of operator's representative

**Regulatory Specialist**

Title

**Patti Diechers**

Signature

**333 W. Sheridan Avenue, Oklahoma City, OK 73102**

Address

City,

State,

Zip Code

**(405) 228-4248**

Tel.: Area Code Number

**6/18/2014**

Date: mo. day yr.

Instructions to Form W-15, Cementing Report

**IMPORTANT: Operators and cementing companies must comply with the requirements of the Commission's Statewide Rules 8 (Water Protection), 13 (Casing, Cementing, Drilling, and Completion), and 14 (Well Plugging). For offshore operations, see the requirements of Rule 13 (c).**

A. What to file. An operator should file an original and one copy of the completed Form W-15 for each cementing company used on a well. The cementing of different casing strings on a well by one cementing company may be reported on one form. Form W-15 should be filed with the following.

- An initial oil or gas completion report, Form W-2 or G-1, as required by Statewide or special field rates;
- Form W-4, Application for Multiple Completion, if the well is a multiple parallel casing completion; and
- Form W-3, Plugging Record, unless the W-3 is signed by the cementing company representative. When reporting dry holes, operators must complete Form W-15, in addition to Form W-3, to show any casing cemented in the hole.

B. Where to file. The appropriate Commission District Office for the county in which the well is located.

C. Surface Casing. An operator must set and cement sufficient surface casing to protect all usable-quality water strata, as defined by the Texas Department of Water Resources, Austin. Before drilling a well in any field or area in which no field rules are in effect or in which surface casing requirements are not specified in the applicable rules, an operator must obtain a letter from the Department of Water Resources stating the protection depth. Surface casing should not be set deeper than 200 feet below the specified depth without prior approval from the Committee.

D. Centralizers. Surface Casing must be centralized at the shoe, above and below a stage collar or diverting tool, if run, and through usable-quality water zones. In Non-deviated holes, a centralizer must be placed every fourth joint from the cement shoe to the ground surface or to the bottom of the cellar. All centralizers must meet API specifications.

E. Exceptions and alternative casing programs. The District Director may grant an exception to the requirements of Statewide Rule 13. In a written application, an operator must state the reason for the requested exception and outline an alternate program for casing and cementing through the protection depth for strata containing usable-quality water. The District Director may approve, modify, or reject a proposed program. An operator must obtain approval of any exception before beginning casing and cementing operations.

F. Intermediate and production casing. For specific technical requirements, operators should consult Statewide Rule 13 (3) and (4).

G. Plugging and abandoning. Cement plugs must be placed in the wellbore as required by Statewide Rule 14. The District Director may require additional cement plugs. For onshore or inland wells, a 10-foot cement plug must be placed in the top of the well, and the casing must be cut off three foot below the ground surface. All cement plugs, except the top plug, must have sufficient slurry volume to fill 100 feet of hole, plus ten percent for each 1,000 feet of depth from the ground surface to the bottom of the plug.

To plug and abandon a well, operators must use only cementers approved by the Director of Field Operations, Cementing companies, service companies or operators can qualify as approved cementers by demonstrating that they are able to mix and pump cement in compliance with Commission rules and regulations.



Cementer: Fill in shaded areas.  
Operator: Fill in other items.

RAILROAD COMMISSION OF TEXAS  
Oil and Gas Division

Form W-15  
Cementing Report  
Rev. 4/1/83  
483-045

*Tracking #107417*

1. Operator's Name (As shown on Form P-5, Organization Report) <i>Devon Energy Production Co., L.P.</i>	2. RRC Operator No. <i>216378</i>	3. RRC District No. <i>7C</i>	4. County of Well Site <b>REAGAN</b>
5. Field Name (Wildcat or exactly as shown on RRC Records) <i>Lin (Wolfcamp)</i>	6. API No. <i>42-383-38628</i>	7. Drilling Permit No. <i>777679</i>	
8. Lease Name <b>UNIVERSITY 49-1</b>	9. Rule 37 Case No.	10. Oil Lease/Gas ID No.	11. Well No. <b>6H</b>

CASING CEMENTING DATA:		SURFACE CASING	INTER-MEDIATE CASING	PRODUCTION CASING		MULTI-STAGE CEMENTING PROCESS	
				Single String	Multiple Parallel Strings	Tool	Shoe
12. Cementing Date						<b>4/14/14</b>	<b>4/13/14</b>
13. • Drilled Hole Size						<b>12 1/4"</b>	<b>12 1/4"</b>
• Est. % wash or hole enlargement							
14. Size of casing (in. O.D.)						<b>9 5/8"</b>	<b>9 5/8"</b>
15. Top of liner (ft.)							
16. Setting depth (ft.)						<b>2486'</b>	<b>4612'</b>
17. Number of centralizers used						<b>37</b>	<b>37</b>
18. Hrs. Waiting on cement before drill-out						<b>8+</b>	<b>8+</b>
1 <sup>st</sup> Slurry	19. API cement used: No. of sacks ▶					<b>475</b>	<b>705</b>
	Class ▶					<b>"C"</b>	<b>"C"</b>
	Additives ▶					<b>#22</b>	<b>#22</b>
2 <sup>nd</sup> Slurry	No. of sacks ▶					<b>150</b>	
	Class ▶					<b>"C"</b>	
	Additives ▶					<b>#22</b>	
3 <sup>rd</sup> Slurry	No. of sacks ▶						
	Class ▶						
	Additives ▶						
1 <sup>st</sup>	20. Slurry pumped: Volume (cu. ft.) ▶					<b>793</b>	<b>972</b>
	Height (ft.) ▶					<b>2532</b>	<b>3103</b>
2 <sup>nd</sup>	Volume (cu. ft.) ▶					<b>207</b>	
	Height (ft.) ▶					<b>660</b>	
3 <sup>rd</sup>	Volume (cu. ft.) ▶						
	Height (ft.) ▶						
Total	Volume (cu. ft.) ▶					<b>1000</b>	<b>972</b>
	Height (ft.) ▶					<b>3192</b>	<b>3103</b>
21. Was cement circulated to ground surface (or bottom of cellar) outside casing ?						<b>YES</b>	<b>NO</b>
Remarks: <b>1<sup>st</sup> STAGE CLASS C +40/60 POZ +0%GEL+4%MPA5+0.5%BA10A+0.5%SMS+0.35%R3+0.125#/SKCELOFLAKE+0.01%STATIC FREE+5% SALT{BWMW}</b> <b>2<sup>nd</sup> STAGE 60:40POZ CLASS C+0%GEL+0.25%FL52+1.5%SMS+3#/SK KOLSEAL+0.125#/SKCELLO FLAKE+0.01%STATIC FREE +5%SALT{BWMW}</b> <b>TAIL CLASS C +60:40 POZ+0%GEL+4%MPA5+0.5%BA10A+0.7%SMS+0.125#/SKCELLOFLAKE+0.01%STATIC FREE+5%SALT{BWMW}</b> <b>CIRCULATED 10 BBLs AT 12.8 PPG 34 SKS</b>							



CEMENTING TO PLUG AND ABANDON	PLUG #1	PLUG #2	PLUG #3	PLUG #4	PLUG #5	PLUG #6	PLUG #7	PLUG #8
23. Cementing date								
24. Size of hole or pipe plugged (in.)								
25. Depth to bottom of tubing or drill pipe (ft.)								
26. Sacks of cement used (each plug)								
27. Slurry volume pumped (cu. ft.)								
28. Calculated top of plug (ft.)								
29. Measured top of plug, if tagged (ft.)								
30. Slurry wt. (lb/gal)								
31. Type cement								

CEMENTER'S CERTIFICATE: I declare under penalties in Sec. 91.143, Texas Natural Resources Code, that I am authorized to make this Certification, that the cementing of casing and/or the placing of cement plugs in this well as shown in the report was performed by me or under my Supervision, and that the cementing data and facts presented on both sides of this form are true, correct, and complete, to the best of my knowledge. This certification covers cementing data only.

**JESUS LOPEZ, Service Supervisor**

Name and title of cementer's representative

**Baker Hughes Services Company**

Cementing Company

Signature

P.O. Box 1135

Address

Eldorado  
City,

Texas  
State,

76936  
Zip Code

(325) 853-2553  
Tel.: Area Code Number

4/14/14  
Date: mo. day yr.

OPERATOR'S CERTIFICATE: I declare under penalties prescribed in Sec. 91.143, Texas Natural Resources Code, that I am authorized to make this certification, that I have knowledge of the well data and information presented in this report, and that data and facts presented on both sides of this form are true, correct, and complete, to the best of my knowledge. This certification covers all well data.

**Patti Riechers**

Typed or printed name of operator's representative

**Regulatory Specialist**

Title

**Patti Riechers**

Signature

**333 W. Sheridan Avenue, Oklahoma City, OK 73102**

Address

City,

State,

Zip Code

**(405) 228-4248**

Tel.: Area Code Number

**7/1/2014**

Date: mo. day yr.

Instructions to Form W-15, Cementing Report

**IMPORTANT: Operators and cementing companies must comply with the requirements of the Commission's Statewide Rules 8 (Water Protection), 13 (Casing, Cementing, Drilling, and Completion), and 14 (Well Plugging). For offshore operations, see the requirements of Rule 13 (c).**

- A. What to file. An operator should file an original and one copy of the completed Form W-15 for each cementing company used on a well. The cementing of different casing strings on a well by one cementing company may be reported on one form. Form W-15 should be filed with the following.
- An initial oil or gas completion report, Form W-2 or G-1, as required by Statewide or special field rates;
  - Form W-4, Application for Multiple Completion, if the well is a multiple parallel casing completion; and
  - Form W-3, Plugging Record, unless the W-3 is signed by the cementing company representative. When reporting dry holes, operators must complete Form W-15, in addition to Form W-3, to show any casing cemented in the hole.
- B. Where to file. The appropriate Commission District Office for the county in which the well is located.
- C. Surface Casing. An operator must set and cement sufficient surface casing to protect all usable-quality water strata, as defined by the Texas Department of Water Resources, Austin. Before drilling a well in any field or area in which no field rules are in effect or in which surface casing requirements are not specified in the applicable rules, an operator must obtain a letter from the Department of Water Resources stating the protection depth. Surface casing should not be set deeper than 200 feet below the specified depth without prior approval from the Committee.
- D. Centralizers. Surface Casing must be centralized at the shoe, above and below a stage collar or diverting tool, if run, and through usable-quality water zones. In Non-deviated holes, a centralizer must be placed every fourth joint from the cement shoe to the ground surface or to the bottom of the cellar. All centralizers must meet API specifications.
- E. Exceptions and alternative casing programs. The District Director may grant an exception to the requirements of Statewide Rule 13. In a written application, an operator must state the reason for the requested exception and outline an alternate program for casing and cementing through the protection depth for strata containing usable-quality water. The District Director may approve, modify, or reject a proposed program. An operator must obtain approval of any exception before beginning casing and cementing operations.
- F. Intermediate and production casing. For specific technical requirements, operators should consult Statewide Rule 13 (3) and (4).
- G. Plugging and abandoning. Cement plugs must be placed in the wellbore as required by Statewide Rule 14. The District Director may require additional cement plugs. For onshore or inland wells, a 10-foot cement plug must be placed in the top of the well, and the casing must be cut off three feet below the ground surface. All cement plugs, except the top plug, must have sufficient slurry volume to fill 100 feet of hole, plus ten percent for each 1,000 feet of depth from the ground surface to the bottom of the plug.

To plug and abandon a well, operators must use only cementers approved by the Director of Field Operations, Cementing companies, service companies or operators can qualify as approved cementers by demonstrating that they are able to mix and pump cement in compliance with Commission rules and regulations.

Cementer: Fill in shaded areas.  
Operator: Fill in other items.

RAILROAD COMMISSION OF TEXAS  
Oil and Gas Division

Form W-15  
Cementing Report  
Rev. 4/1/83  
483-045

*Tracking #107417*

1. Operator's Name (As shown on Form P-5, Organization Report) <i>Devon Energy Production Co., L.P.</i>	2. RRC Operator No. <i>216378</i>	3. RRC District No. <i>7C</i>	4. County of Well Site <b>REAGAN</b>
5. Field Name (Wildcat or exactly as shown on RRC Records) <i>Lin (Wolfcamp)</i>		6. API No. <i>42-383-38628</i>	7. Drilling Permit No. <i>777679</i>
8. Lease Name <b>UNIVERSITY 49-1</b>	9. Rule 37 Case No.	10. Oil Lease/Gas ID No.	11. Well No. <b>6H</b>

CASING CEMENTING DATA:		SURFACE CASING	INTER-MEDIATE CASING	PRODUCTION CASING		MULTI-STAGE CEMENTING PROCESS	
				Single String	Multiple Parallel Strings	Tool	Shoe
12. Cementing Date				<i>4/21/14</i>			
13. • Drilled Hole Size				<i>8 3/4"</i>			
• Est. % wash or hole enlargement							
14. Size of casing (in. O.D.)				<i>5 1/2"</i>			
15. Top of liner (ft.)							
16. Setting depth (ft.)				<i>12,055'</i>			
17. Number of centralizers used				<i>174</i>			
18. Hrs. Waiting on cement before drill-out				<i>8+</i>			
1 <sup>st</sup> Slurry	19. API cement used: No. of sacks ▶			<i>775</i>			
	Class ▶			<i>"H"</i>			
	Additives ▶			<i>#22</i>			
2 <sup>nd</sup> Slurry	No. of sacks ▶			<i>1335</i>			
	Class ▶			<i>"H"</i>			
	Additives ▶			<i>#22</i>			
3 <sup>rd</sup> Slurry	No. of sacks ▶						
	Class ▶						
	Additives ▶						
1 <sup>st</sup>	20. Slurry pumped: Volume (cu. ft.) ▶			<i>1859</i>			
	Height (ft.) ▶			<i>7359</i>			
2 <sup>nd</sup>	Volume (cu. ft.) ▶			<i>1711</i>			
	Height (ft.) ▶			<i>6773</i>			
3 <sup>rd</sup>	Volume (cu. ft.) ▶						
	Height (ft.) ▶						
Total	Volume (cu. ft.) ▶			<i>3570</i>			
	Height (ft.) ▶			<i>14132</i>			
21. Was cement circulated to ground surface (or bottom of cellar) outside casing ?				<b>YES</b>			
Remarks: 1ST SLURRY H 50/50POZ + 10% GEL + .8% FL-52 + .3% ASA-301 + .5% SMS + .2% R-3 + 3PPS KOLSEAL + .25 PPS CELLOFLAKE + 2% SALT (BWOW) +.01% STATIC FREE 2 <sup>ND</sup> SLURRY H 50/50 POZ + .5% FL-52 + .5% FL-25 + .3% CD-32 + .6% SMS + 5% SALT(BWOW) + .25% R-21 + .01% STATIC FREE CIRCULATED 85 BBLS OR 199 SKS @ 11.8 PPG							



CEMENTING TO PLUG AND ABANDON	PLUG #1	PLUG #2	PLUG #3	PLUG #4	PLUG #5	PLUG #6	PLUG #7	PLUG #8
23. Cementing date								
24. Size of hole or pipe plugged (in.)								
25. Depth to bottom of tubing or drill pipe (ft.)								
26. Sacks of cement used (each plug)								
27. Slurry volume pumped (cu. ft.)								
28. Calculated top of plug (ft.)								
29. Measured top of plug, if tagged (ft.)								
30. Slurry wt. (lb/gal)								
31. Type cement								

CEMENTER'S CERTIFICATE: I declare under penalties in Sec. 91.143, Texas Natural Resources Code, that I am authorized to make this Certification, that the cementing of casing and/or the placing of cement plugs in this well as shown in the report was performed by me or under my Supervision, and that the cementing data and facts presented on both sides of this form are true, correct, and complete, to the best of my knowledge. This certification covers cementing data only.

**JASON EVANS, Service Supervisor**

Name and title of cementer's representative

**Baker Hughes Incorporated**

Cementing Company

*[Signature]*  
Signature

PO BOX 1135

Address

ELDORADO

City,

TEXAS

State,

76936

Zip Code

(325) 853-2553

Tel.: Area Code Number

4/21/14

Date: mo. day yr.

OPERATOR'S CERTIFICATE: I declare under penalties prescribed in Sec. 91.143, Texas Natural Resources Code, that I am authorized to make this certification, that I have knowledge of the well data and information presented in this report, and that data and facts presented on both sides of this form are true, correct, and complete, to the best of my knowledge. This certification covers all well data.

*Patti Riechers*

Typed or printed name of operator's representative

*Regulatory Specialist*

Title

*Patti Riechers*  
Signature

333 W. Sheridan Avenue, Oklahoma City, OK 73102

Address

City,

State,

Zip Code

(405) 228-4248

Tel.: Area Code Number

7/1/2014  
Date: mo. day yr.

Instructions to Form W-15, Cementing Report

**IMPORTANT: Operators and cementing companies must comply with the requirements of the Commission's Statewide Rules 8 (Water Protection), 13 (Casing, Cementing, Drilling, and Completion), and 14 (Well Plugging). For offshore operations, see the requirements of Rule 13 (c).**

- A. What to file. An operator should file an original and one copy of the completed Form W-15 for each cementing company used on a well. The cementing of different casing strings on a well by one cementing company may be reported on one form. Form W-15 should be filed with the following.
- An initial oil or gas completion report, Form W-2 or G-1, as required by Statewide or special field rates;
  - Form W-4, Application for Multiple Completion, if the well is a multiple parallel casing completion; and
  - Form W-3, Plugging Record, unless the W-3 is signed by the cementing company representative. When reporting dry holes, operators must complete Form W-15, in addition to Form W-3, to show any casing cemented in the hole.
- B. Where to file. The appropriate Commission District Office for the county in which the well is located.
- C. Surface Casing. An operator must set and cement sufficient surface casing to protect all usable-quality water strata, as defined by the Texas Department of Water Resources, Austin. Before drilling a well in any field or area in which no field rules are in effect or in which surface casing requirements are not specified in the applicable rules, an operator must obtain a letter from the Department of Water Resources stating the protection depth. Surface casing should not be set deeper than 200 feet below the specified depth without prior approval from the Committee.
- D. Centralizers. Surface Casing must be centralized at the shoe, above and below a stage collar or diverting tool, if run, and through usable-quality water zones. In Non-deviated holes, a centralizer must be placed every fourth joint from the cement shoe to the ground surface or to the bottom of the cellar. All centralizers must meet API specifications.
- E. Exceptions and alternative casing programs. The District Director may grant an exception to the requirements of Statewide Rule 13. In a written application, an operator must state the reason for the requested exception and outline an alternate program for casing and cementing through the protection depth for strata containing usable-quality water. The District Director may approve, modify, or reject a proposed program. An operator must obtain approval of any exception before beginning casing and cementing operations.
- F. Intermediate and production casing. For specific technical requirements, operators should consult Statewide Rule 13 (3) and (4).
- G. Plugging and abandoning. Cement plugs must be placed in the wellbore as required by Statewide Rule 14. The District Director may require additional cement plugs. For onshore or inland wells, a 10-foot cement plug must be placed in the top of the well, and the casing must be cut off three foot below the ground surface. All cement plugs, except the top plug, must have sufficient slurry volume to fill 100 feet of hole, plus ten percent for each 1,000 feet of depth from the ground surface to the bottom of the plug.

To plug and abandon a well, operators must use only cementers approved by the Director of Field Operations, Cementing companies, service companies or operators can qualify as approved cementers by demonstrating that they are able to mix and pump cement in compliance with Commission rules and regulations.



Tracking No.: 107417

This facsimile L-1 was generated electronically from data submitted to the RRC.

## Instructions

When to File Form L-1:

- with Forms G-1, W-2, and GT-1 for new and deepened gas, oil, and geothermal wells
- with Form W-3 for plugged dry holes
- when sending in a log which was held under a request for confidentiality and the period for confidentiality has not yet expired.

When is Form L-1 NOT required:

- with Forms W-2, G-1, and GT-1 filed for injection wells, disposal wells, water supply wells, service wells, re-test wells, re-classifications, and plugbacks of oil, gas or geothermal wells
- with Form W-3 for plugging of other than a dry hole

Where to File Form L-1:

- with the appropriate Commission district office

Filling out Form L-1:

- Section I and the signature section must be filled out for all wells
- complete only the appropriate part of Section II

Type of log required:

- any wireline survey run for the purpose of obtaining lithology, porosity, or resistivity information
- no more than one such log is required but it must be of the subject well
- if such log is NOT run on the subject well, do NOT substitute any other type of log; just select Section II, Part A below

## SECTION I. IDENTIFICATION

Operator Name: DEVON ENERGY PRODUCTION CO, L.P.	District No. 7C	Completion Date: 05/24/2014
Field Name LIN (WOLFCAMP)	Drilling Permit No. 777679	
Lease Name UNIVERSITY 49-1	Lease/ID No.	Well No. 6H
County REAGAN	API No. 42- 383-38628	

## SECTION II. LOG STATUS (Complete either A or B)

☒ A. BASIC ELECTRIC LOG NOT RUN☐ B. BASIC ELECTRIC LOG RUN. (Select one)

- ☐ 1. Confidentiality is requested and a copy of the header for each log that has been run on the well is attached.
- ☐ 2. Confidentiality already granted on basic electric log covering this interval (applicable to deepened wells only).
- ☐ 3. Basic electric log covering this interval already on file with Commission (applicable to deepened wells only).
- ☐ 4. Log attached to (select one):

☐ (a) Form L-1 (this form). If the company/lease name on log is different from that shown in Section I, please enter name on log here: \_\_\_\_\_

Check here if attached log is being submitted after being held confidential. ☐

☐ (b) Form P-7, Application for Discovery Allowable and New Field Designation.

☐ (c) Form W-4, Application for Multiple Completion:

Lease or ID No(s). \_\_\_\_\_

Well No(s). \_\_\_\_\_

Patti Riechers

Signature

DEVON ENERGY PRODUCTION CO, L.P.

Name (print)

Regulatory Specialist

Title

(405) 228-4248

Phone

06/18/2014

Date

-FOR RAILROAD COMMISSION USE ONLY-

STATEMENT OF PRODUCTIVITY OF ACREAGE  
ASSIGNED TO PRORATION UNITS

Form P-15

Tracking No.: 107417

This facsimile P-15 was generated electronically  
from data submitted to the RRC.

The undersigned states that he is authorized to make this statement; that he has knowledge of the facts concerning the DEVON ENERGY PRODUCTION CO, L.P. ,

OPERATOR

UNIVERSITY 49-1

LEASE

No. 6H

WELL

; that such well is

completed in the LIN (WOLFCAMP) Field, REAGAN County,

Texas and that the acreage claimed, and assigned to such well for proration purposes as authorized by special rule and as shown on the attached certified plat embraces \_\_\_\_\_

334.4 acres which can reasonably be considered to be productive of hydrocarbons.

- CERTIFICATE

*I declare under penalties prescribed in Sec. 91.143, Texas Natural Resources Code, that I am authorized to make this report, that this report was prepared by me or under my supervision and direction,*

Date 06/18/2014 Signature Patti Riechers

Telephone (405) 228-4248 Title Regulatory Specialist  
AREA CODE



Devon Energy Production Co., L.P.

333 W. Sheridan Ave.  
Oklahoma City, OK 73102-5015

**P-15 Attachment**

*to the*

**University 49-1**

**Lin (Wolfcamp) Field  
A 668.80 Acre Lease in Reagan County**

<u>Well Number</u>	<u>RRC ID #</u>	<u>Number of Assigned Acres</u>
5H	DP #777672	334.40
6H	DP #777679	334.40
Total Acreage Allocated		668.80

*P-15 Attachment (Revised 01/30/2008)*

Prepared By:

Patti Riechers  
Regulatory Dept.  
333 W. Sheridan Ave.  
Oklahoma City, OK 73102-5015  
405-228-4248



CERTIFICATE OF COMPLIANCE  
AND TRANSPORTATION AUTHORITY

P-4

This facsimile P-4 was generated electronically from data submitted to the RRC.  
A certification of the automated data is available in the RRC's Austin office.

Tracking No.: 107417

1. Field name exactly as shown on proration schedule <b>LIN (WOLFCAMP)</b>		2. Lease name as shown on proration schedule <b>UNIVERSITY 49-1</b>					
3. Current operator name exactly as shown on P-5 Organization Report <b>DEVON ENERGY PRODUCTION CO, L.P.</b>		4. Operator P-5 no. <b>216378</b>	5. Oil Lse/Gas ID no	6. County <b>REAGAN</b>	7. RRC district <b>7C</b>		
8. Operator address including city, state, and zip code <b>ATTN VICTORIA SANCHEZ 333 WEST SHERIDAN AVE OKLAHOMA CITY, OK 73102-5010</b>		9. Well no(s) (see instruction E) <b>6H</b>			11. Effective Date <b>05/24/2014</b>		
		10. Classification <input checked="" type="checkbox"/> Oil <input type="checkbox"/> Gas <input type="checkbox"/> Other (see instruction A)					
12. Purpose of Filing. (Complete section a or b below.) (See instructions B and G) a. Change of: <input type="checkbox"/> operator <input type="checkbox"/> oil or condensate gatherer <input type="checkbox"/> gas gatherer <input type="checkbox"/> gas purchaser <input type="checkbox"/> gas purchaser system code <input type="checkbox"/> field name from _____ <input type="checkbox"/> lease name from _____ -- OR -- b. New RRC Number for: <input checked="" type="checkbox"/> oil lease <input type="checkbox"/> gas well <input type="checkbox"/> other well (specify) _____ Due to: <input checked="" type="checkbox"/> new completion or recompletion <input type="checkbox"/> reclass oil to gas <input type="checkbox"/> reclass gas to oil <input type="checkbox"/> consolidation, unitization, or subdivision (oil lease only)							
13. Authorized GAS WELL GAS or CASINGHEAD GAS Gatherer(s) and/or Purchaser(s). (See instruction G).							
Gatherer	Purchaser	Name of GAS WELL GAS or CASINGHEAD GAS Gatherer(s) or Purchaser(s) As Indicated in Columns to the Left (Attach an additional sheet in same format if more space is needed)			Purchaser's RRC Assigned System Code	Percent of Take	Full-well stream
X		LUCID ENERGY WESTEX, LLC(511943)				100.0	
	X	DEVON GAS SERVICES, L.P.(216732)			0001	100.0	
14. Authorized OIL or CONDENSATE Gatherer(s). (See instruction G).							
Name of OIL or CONDENSATE Gatherer(s) - List Highest Volume Gatherer First (Attach an additional sheet in same format if more space is needed)						Percent of Take	
SHELL TRADING (US) COMPANY(774715)						100.0	
RRC USE ONLY: Reviewer's initials: _____ Approval date: _____							
15. PREVIOUS OPERATOR CERTIFICATION FOR CHANGE OF OPERATOR P-4 FILING. Being the PREVIOUS OPERATOR, I certify that operating responsibility for the well(s) designated in this filing, located on the subject lease has been transferred in its entirety to the above named Current Operator. I understand, as Previous Operator, that designation of the above named operator as Current Operator is not effective until this certificate is approved by the Commission.							
Name of Previous Operator _____ Name (print) _____ Title _____				Signature <input type="checkbox"/> Authorized Employee of previous operator <input type="checkbox"/> Authorized agent of previous operator (see instruction G) _____ Date _____ Phone with area code _____			
16. CURRENT OPERATOR CERTIFICATION. By signing this certificate as the Current Operator, I certify that all statements on this form are true and correct and I acknowledge responsibility for the regulatory compliance of the subject lease including plugging of well(s) pursuant to Rule 14. I further acknowledge that I assume responsibility for the physical operation, control, and proper plugging of each well designated in this filing. I also acknowledge that I will remain designated as the Current Operator until a new certificate designating a new Current Operator is approved by the Commission.							
DEVON ENERGY PRODUCTION CO, L.P. _____ Name (print) Regulatory Specialist _____ Title patti.riechers@devon.com _____ E-mail Address (optional)				Patti Riechers _____ Signature <input checked="" type="checkbox"/> Authorized Employee of current operator <input type="checkbox"/> Authorized agent of current operator (see instruction G) _____ Date 06/18/2014 _____ Phone with area code (405) 228-4248 _____			



Groundwater  
Advisory Unit

GROUNDWATER PROTECTION DETERMINATION

Date **January 31, 2014**

GAU File No.: SC- **11689**

\*\*\*\*\* EXPEDITED APPLICATION \*\*\*\*\*

API Number **38300000**

Attention: **ANNETTE RAINES**

RRC Lease No. **000000**

SC\_216378\_38300000\_000000\_11689.pdf

DEVON ENERGY PRODUCTION CO LP  
333 W SHERIDAN AVE  
OKLAHOMA CITY OK 73102

--Measured--

867 ft FEL

200 ft FSL

MRL: SECTION

Digital Map Location:

X-coord/Long **101.39034**

Y-coord/Lat **31.13137**

Datum **83**

Zone

P-5# 216378

County **REAGAN**

Lease & Well No. **UNIVERSITY 49-1 #5H&PAD**

Purpose **ND**

Location **SUR-UL, BLK-49, SEC-1, -- [TD=6800], [RRC 7C],**

To protect usable-quality groundwater at this location, the Groundwater Advisory Unit of the Texas Railroad Commission recommends:

The interval from the land surface to the base of the SANTA ROSA, which is estimated to occur at a depth of 850 feet, must be protected.

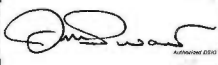
This recommendation is applicable to all wells drilled on this pad.

*University 49-1 #6H*

Note: Unless stated otherwise, this recommendation is intended to apply only to the subject well and not for area-wide use. This recommendation is intended for normal drilling, production, and plugging operations only. It does not apply to saltwater disposal operation into a nonproductive zone (RRC Form W-14).

If you have any questions, please contact us at 512-463-2741, [gau@rrc.state.tx.us](mailto:gau@rrc.state.tx.us), or by mail.

Sincerely,

  
Digitally signed by Jack Oswalt  
DN: c=US, st=TEXAS, l=Austin, o=Railroad  
Commission of Texas, ou=Groundwater  
Advisory Unit, cn=Jack Oswalt,  
email=jack.oswalt@rrc.state.tx.us  
Date: 2014.01.31 14:25:55 -06'00'  
**Jack M. Oswalt, P.G.**

GEOLOGIST SEAL



Geologist, Groundwater Advisory Unit  
Oil & Gas Division

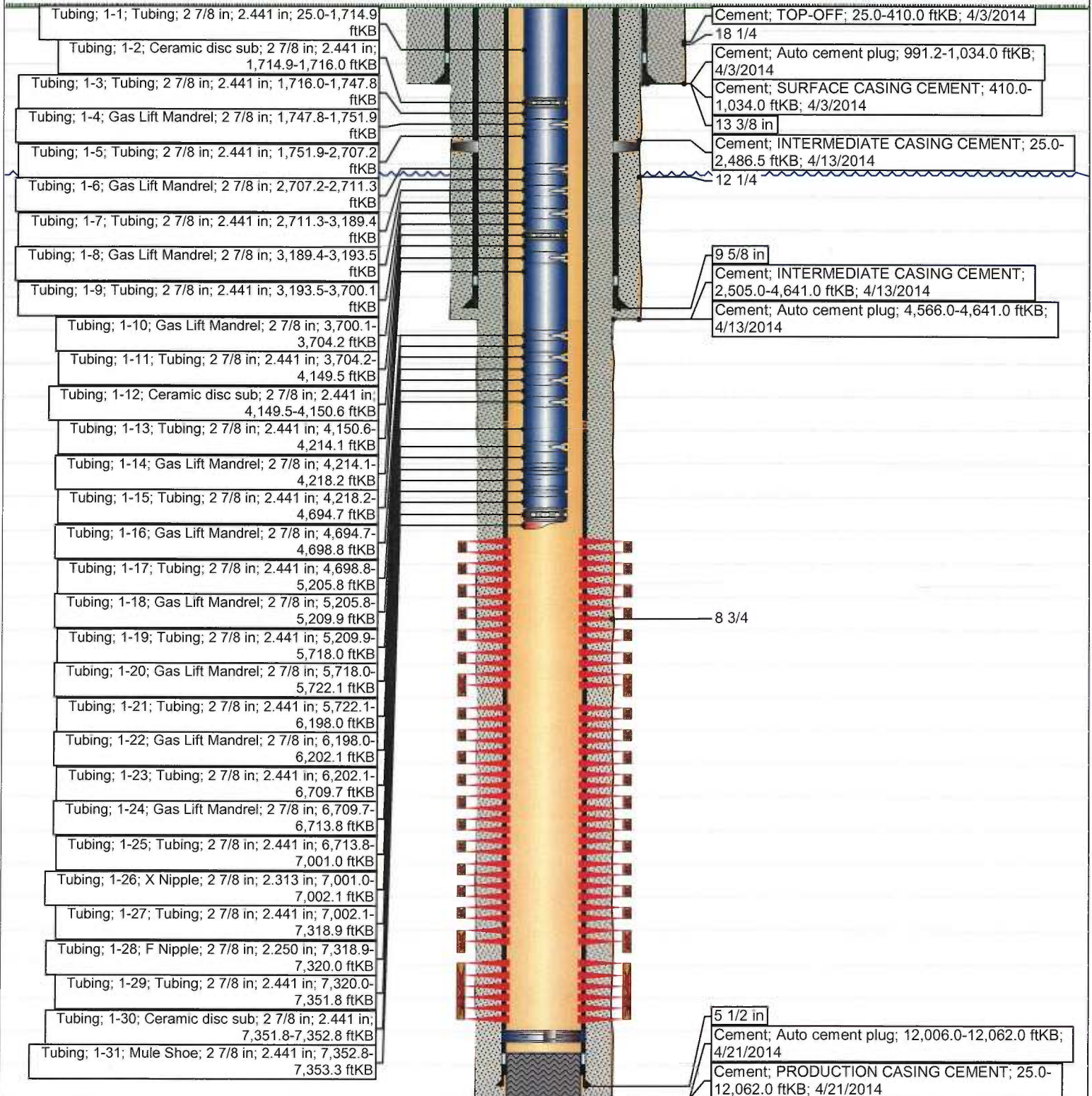
The seal appearing on this document was authorized by Jack M. Oswalt on 1/31/2014  
Note: Alteration of this electronic document will invalidate the digital signature.

**Schematic**

District MIDLAND BASIN	County REAGAN	Field Name LIN (WOLFCAMP)	Project Group PB TEXAS EAST	State/Province TX
Surface Legal Location SEC 1, BLK 49, UNIVERSITY LAND	API/UWI 4238338628	Latitude (°) 31° 7' 52.934" N	Longitude (°) 101° 23' 24.782" W	Ground Elev... 2,761.00
Total Depth (ftKB) 12,062.0	Total Depth All (TVD) (ftKB) OH - 7,080.3	PBTD (All) (ftKB)	KB - GL (ft) 25.00	Orig KB Elev (ft) 2,786.00
				Tubing Head Elevation (ft)
				Original Drig Spud Date 3/31/2014 23:00

HORIZONTAL - OH, 6/18/2014 2:41:57 PM

Vertical schematic (actual)





**Schematic**

District MIDLAND BASIN	County REAGAN	Field Name LIN (WOLFCAMP)	Project Group PB TEXAS EAST	State/Province TX
Surface Legal Location SEC 1, BLK 49, UNIVERSITY LAND	API/UWI 4238338628	Latitude (°) 31° 7' 52.934" N	Longitude (°) 101° 23' 24.782" W	Ground Elev... 2,761.00
			KB - GL (ft) 25.00	Orig KB Elev (ft) 2,786.00
				Tubing Head Elevation (ft)

**Most Recent Job**

Job Cat	Job Typ	Job SubTyp	Job Start	Job End
DRILLING/COMPLETIONS	DEVELOPMENT		3/31/2014 11:00	

HORIZONTAL - OH, 6/18/2014 2:41:58 PM

Vertical schematic (actual)

