



**RAILROAD COMMISSION OF TEXAS  
OIL & GAS DIVISION**

**Form W-1H** 07/2004  
**Supplemental Horizontal Well Information**

Permit Status: **Approved**  
*The RRC has not approved this application. Duplication or distribution of information is at the user's own risk.*

**APPLICATION FOR PERMIT TO DRILL, RECOMPLETE, OR RE-ENTER**

*This facsimile W-1 was generated electronically from data submitted to the RRC.  
A certification of the automated data is available in the RRC's Austin office.*

Permit # **751139**  
Approved Date: **Nov 28, 2012**

1. RRC Operator No. <b>252014</b>	2. Operator's Name (exactly as shown on form P-5, Organization Report) <b>ENDURING RESOURCES, LLC</b>	3. Lease Name <b>UNIVERSITY 09</b>	4. Well No. <b>0906H</b>
--------------------------------------	--	---------------------------------------	-----------------------------

**Lateral Drainhole Location Information**

5. Field as shown on Form W-1 **LIN (WOLFCAMP) (Field # 53613750, RRC District 7C)**

6. Section <b>16</b>	7. Block <b>9</b>	8. Survey <b>UL</b>	9. Abstract	10. County of BHL <b>REAGAN</b>
-------------------------	----------------------	------------------------	-------------	------------------------------------

11. Terminus Lease Line Perpendiculars <b>660</b> ft. from the <b>WEST</b> line. and <b>100</b> ft. from the <b>SOUTH</b> line
12. Terminus Survey Line Perpendiculars <b>660</b> ft. from the <b>WEST</b> line. and <b>100</b> ft. from the <b>SOUTH</b> line
13. Penetration Point Lease Line Perpendiculars <b>660</b> ft. from the <b>WEST</b> line. and <b>725</b> ft. from the <b>NORTH</b> line



ENDURING RESOURCES, L.L.C.  
UNIVERSITY 09,  
#0906 WELL  
SURFACE HOLE LOCATION  
X=1,599,644.64  
Y=591,605.48  
LAT= 31°17'13.80"  
LON= 101°36'55.63"  
SURFACE ELEVATION=2621.11'

ENDURING RESOURCES, L.L.C.  
UNIVERSITY 09,  
#0906H WELL  
PENETRATION POINT LOCATION



THIS MAP WAS PREPARED FROM AN ACTUAL ON THE GROUND SURVEY PERFORMED UNDER MY SUPERVISION ON NOVEMBER 14, 2012.

HEATHER L. PASSMORE  
REGISTERED PROFESSIONAL LAND SURVEYOR  
STATE OF TEXAS NO. 5997

BEARINGS AND COORDINATES SHOWN ON THIS MAP ARE BASED ON THE TEXAS STATE PLANE COORDINATE SYSTEM, CENTRAL ZONE, NAD 27.

LATITUDES AND LONGITUDES SHOWN ON THIS MAP ARE BASED ON WGS 84.

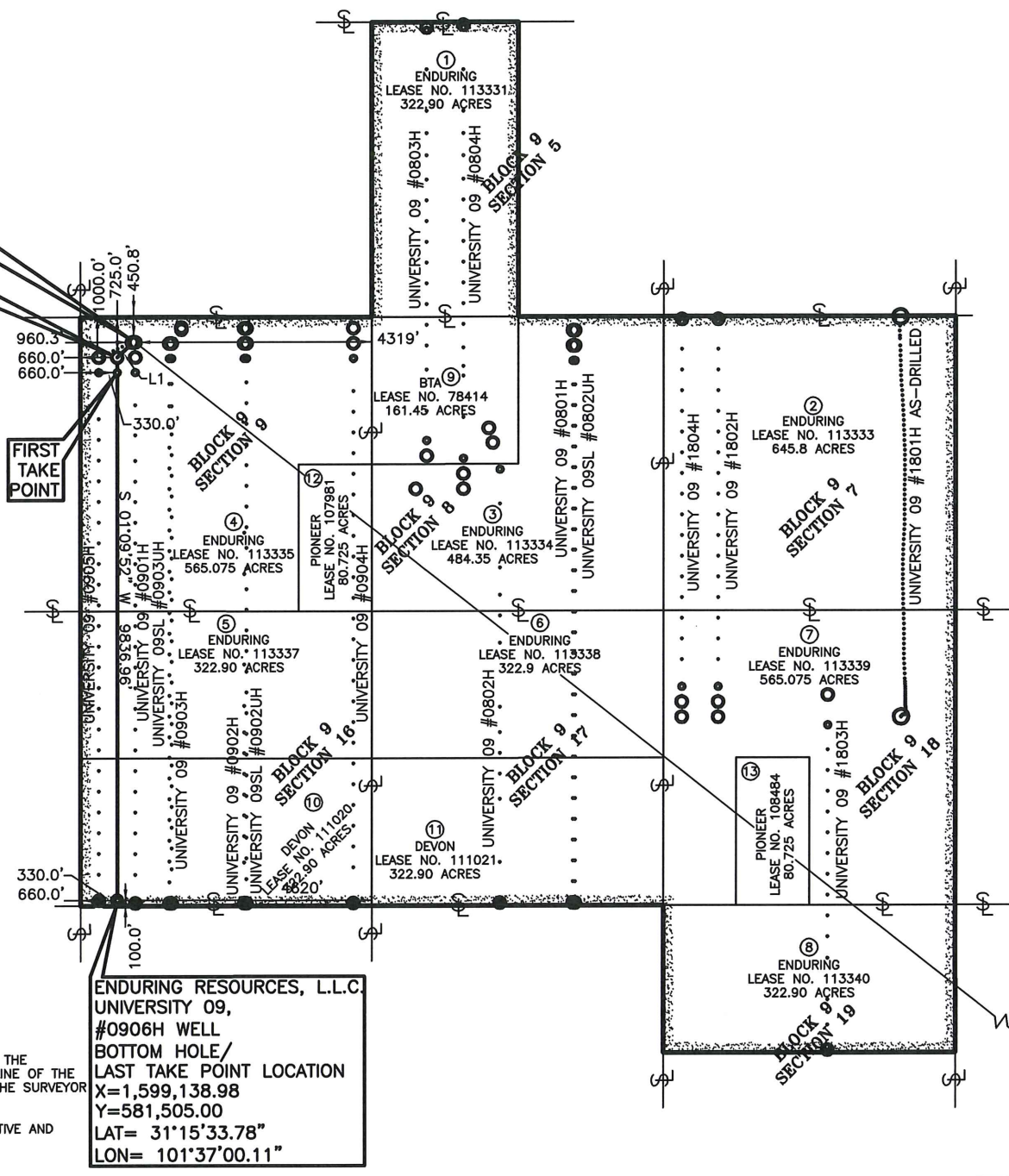
THIS MAP WAS PREPARED FOR AREA COMPUTATIONS OF MINERAL OWNERSHIP AND DOES NOT REPRESENT A CURRENT OWNERSHIP BOUNDARY SURVEY.

RECORDS RESEARCH WAS PROVIDED BY THE CLIENT OR CLIENT'S REPRESENTATIVES. CLIENTS REPRESENTATIVE DIRECT THE SURVEYOR TO EXTEND THE MINERAL DEEDS TO THE CENTERLINE OF THE RIGHT-OF-WAY WHEN MINERAL DEEDS ARE NOT PROVIDED. THE SURVEYOR PERFORMED NO ADDITIONAL RESEARCH.

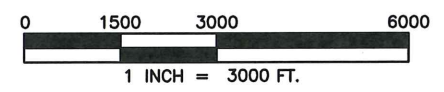
LESSOR NAMES ARE PROVIDED BY THE CLIENTS REPRESENTATIVE AND NOT BY THE SURVEYOR.

§ = APPROXIMATE SURVEY ABSTRACT LINE

ENDURING RESOURCES, L.L.C.  
UNIVERSITY 09,  
#0906H WELL  
BOTTOM HOLE/  
LAST TAKE POINT LOCATION  
X=1,599,138.98  
Y=581,505.00  
LAT= 31°15'33.78"  
LON= 101°37'00.11"



TRACT	LEASE #	CALLED ACREAGE	MEASURED ACREAGE	MEASURED PCT.
1	UNIVERSITY LANDS 113331	322.90 ACRES	322.994 ACRES	7.142
2	UNIVERSITY LANDS 113333	645.80 ACRES	645.988 ACRES	14.285
3	UNIVERSITY LANDS 113334	484.35 ACRES	484.491 ACRES	10.713
4	UNIVERSITY LANDS 113335	565.075 ACRES	565.399 ACRES	12.503
5	UNIVERSITY LANDS 113337	322.90 ACRES	323.079 ACRES	7.144
6	UNIVERSITY LANDS 113338	322.90 ACRES	322.985 ACRES	7.142
7	UNIVERSITY LANDS 113339	565.075 ACRES	565.270 ACRES	12.500
8	UNIVERSITY LANDS 113340	322.90 ACRES	323.031 ACRES	7.143
9	UNIVERSITY LANDS 78414	161.45 ACRES	161.497 ACRES	3.571
10	UNIVERSITY LANDS 111020	322.90 ACRES	323.071 ACRES	7.144
11	UNIVERSITY LANDS 111021	322.90 ACRES	322.998 ACRES	7.142
12	UNIVERSITY LANDS 107981	80.725 ACRES	80.774 ACRES	1.786
13	UNIVERSITY LANDS 108484	80.725 ACRES	80.708 ACRES	1.785
TOTAL		4522.285 ACRES	4522.285 ACRES	100.000



LINE	BEARING	DISTANCE
L1	S 48°46'19" W	406.68'



**FINAL**  
ENDURING RESOURCES, L.L.C.  
UNIVERSITY 09,  
#0906H WELL  
4522.285 ACRES  
REAGAN COUNTY, TEXAS  
**PERCHERON**  
SURVEYING, LLC  
15411 Vantage Pkwy West  
Suite 205  
Houston, Texas 77032  
(281) 447-6230  
NOVEMBER 27, 2012  
JOB NO. 140.0014.009 REV. 3