

**RAILROAD COMMISSION OF TEXAS
OIL & GAS DIVISION**

Form W-1H 07/2004
Supplemental Horizontal Well Information

Permit Status: **Approved**
The RRC has not approved this application. Duplication or distribution of information is at the user's own risk.

APPLICATION FOR PERMIT TO DRILL, RECOMPLETE, OR RE-ENTER

*This facsimile W-1 was generated electronically from data submitted to the RRC.
A certification of the automated data is available in the RRC's Austin office.*

Permit # **751139**
Approved Date: **Nov 12, 2012**

1. RRC Operator No. 252014	2. Operator's Name (exactly as shown on form P-5, Organization Report) ENDURING RESOURCES, LLC	3. Lease Name UNIVERSITY 09	4. Well No. 0906H
--------------------------------------	--	---------------------------------------	-----------------------------

Lateral Drainhole Location Information

5. Field as shown on Form W-1 **LIN (WOLFCAMP) (Field # 53613750, RRC District 7C)**

6. Section 16	7. Block 9	8. Survey UL	9. Abstract	10. County of BHL REAGAN
-------------------------	----------------------	------------------------	-------------	------------------------------------

11. Terminus Lease Line Perpendiculars 660 ft. from the WEST line. and 100 ft. from the SOUTH line
12. Terminus Survey Line Perpendiculars 660 ft. from the WEST line. and 100 ft. from the SOUTH line
13. Penetration Point Lease Line Perpendiculars 660 ft. from the WEST line. and 725 ft. from the NORTH line

ENDURING RESOURCES, L.L.C.
UNIVERSITY 09,
#0906 WELL
SURFACE HOLE LOCATION
X=1,599,674.30
Y=591,605.71
LAT= 31°17'13.81"
LON= 101°36'55.29"
SURFACE ELEVATION=2629.32'

ENDURING RESOURCES, L.L.C.
UNIVERSITY 09,
#0905H WELL
PENETRATION POINT LOCATION



THIS MAP WAS PREPARED FROM AN ACTUAL ON THE GROUND SURVEY PERFORMED UNDER MY SUPERVISION ON OCTOBER 19, 2012.

HEATHER L. PASSMORE
REGISTERED PROFESSIONAL LAND SURVEYOR
STATE OF TEXAS NO. 5997

BEARINGS AND COORDINATES SHOWN ON THIS MAP ARE BASED ON THE TEXAS STATE PLANE COORDINATE SYSTEM, CENTRAL ZONE, NAD 27.

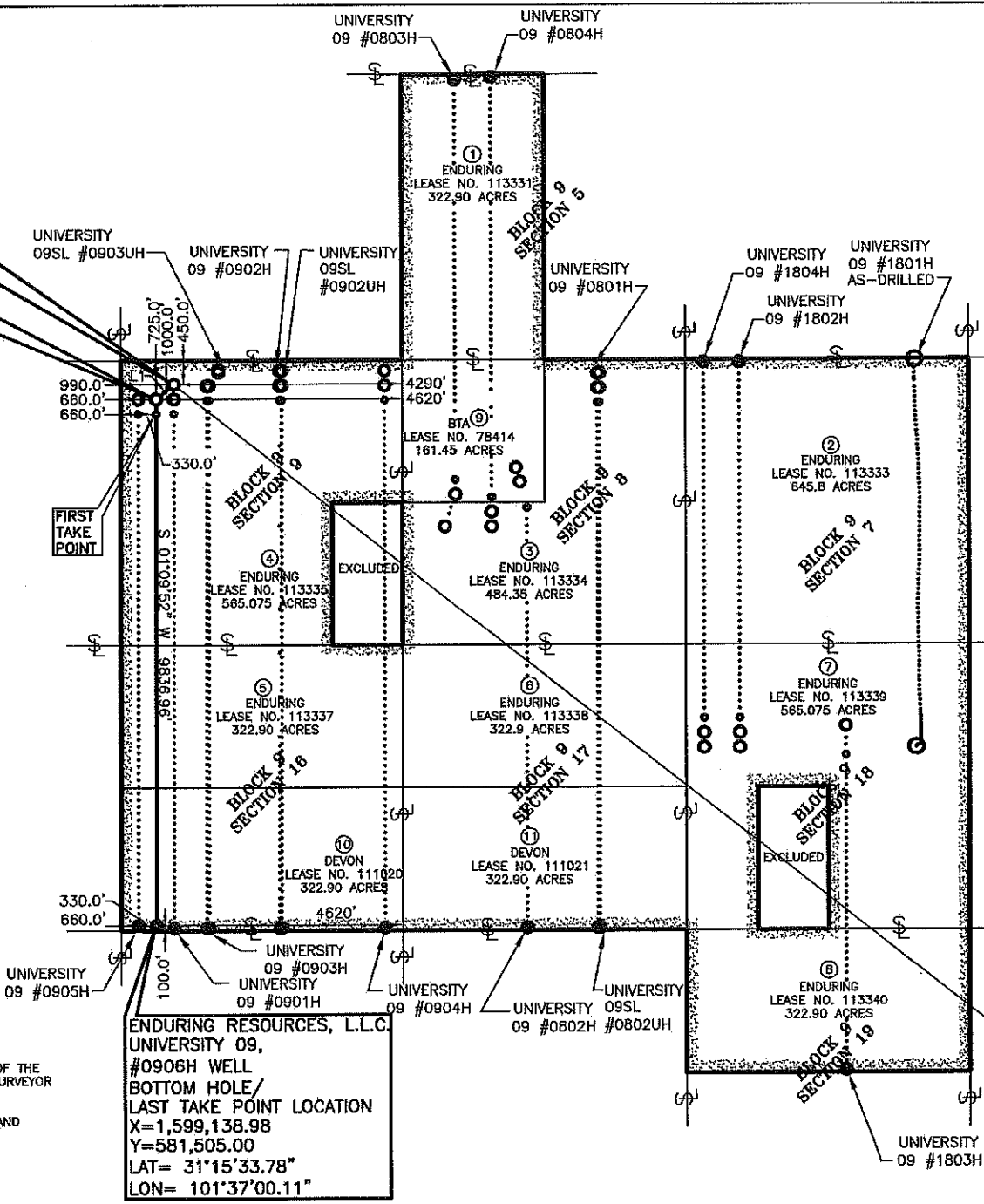
LATITUDES AND LONGITUDES SHOWN ON THIS MAP ARE BASED ON WGS 84.

THIS MAP WAS PREPARED FOR AREA COMPUTATIONS OF MINERAL OWNERSHIP AND DOES NOT REPRESENT A CURRENT OWNERSHIP BOUNDARY SURVEY.

RECORDS RESEARCH WAS PROVIDED BY THE CLIENT OR CLIENT'S REPRESENTATIVES. CLIENTS REPRESENTATIVE DIRECT THE SURVEYOR TO EXTEND THE MINERAL DEEDS TO THE CENTERLINE OF THE RIGHT-OF-WAY WHEN MINERAL DEEDS ARE NOT PROVIDED. THE SURVEYOR PERFORMED NO ADDITIONAL RESEARCH.

LESSOR NAMES ARE PROVIDED BY THE CLIENTS REPRESENTATIVE AND NOT BY THE SURVEYOR.

§ = APPROXIMATE SURVEY ABSTRACT LINE



TRACT	LEASE #	CALLED ACREAGE	MEASURED ACREAGE	MEASURED PCT.
1	UNIVERSITY LANDS 113331	322.90 ACRES	322.994 ACRES	7.407
2	UNIVERSITY LANDS 113333	645.80 ACRES	645.988 ACRES	14.814
3	UNIVERSITY LANDS 113334	484.35 ACRES	484.491 ACRES	11.110
4	UNIVERSITY LANDS 113335	565.075 ACRES	565.399 ACRES	12.965
5	UNIVERSITY LANDS 113337	322.90 ACRES	323.079 ACRES	7.408
6	UNIVERSITY LANDS 113338	322.90 ACRES	322.985 ACRES	7.407
7	UNIVERSITY LANDS 113339	565.075 ACRES	565.270 ACRES	12.963
8	UNIVERSITY LANDS 113340	322.90 ACRES	323.031 ACRES	7.408
9	UNIVERSITY LANDS 78414	161.45 ACRES	161.497 ACRES	3.703
10	UNIVERSITY LANDS 111020	322.90 ACRES	323.071 ACRES	7.408
11	UNIVERSITY LANDS 111021	322.90 ACRES	322.998 ACRES	7.407
TOTAL			4360.803 ACRES	100.000

ENDURING RESOURCES, L.L.C.
UNIVERSITY 09,
#0906H WELL
BOTTOM HOLE/
LAST TAKE POINT LOCATION
X=1,599,138.98
Y=581,505.00
LAT= 31°15'33.78"
LON= 101°37'00.11"

FINAL
ENDURING RESOURCES, L.L.C.
UNIVERSITY 09,
#0906H WELL
4360.803 ACRES
REAGAN COUNTY, TEXAS
PERCHERON
SURVEYING, L.L.C.
15411 Vantage Pkwy West
Suite 205
Houston, Texas 77032
(281) 447-6230
NOVEMBER 07, 2012
JOB NO. 140.0014.009 REV. 1