

Type or print only

RAILROAD COMMISSION OF TEXAS
Oil and Gas DivisionForm W-2
Rev. 4/1/83
DBC1297

API No. 42-383-34774				7. RRC District No. 7C	
Oil Well Potential Test, Completion or Recompletion Report, and Log					
1. FIELD NAME (as per RRC Records or Wildcat) GRIERSON SPRING (STRAWN)			2. LEASE NAME UNIVERSITY 6-17		8. RRC Lease No. 16987
3. OPERATOR'S NAME (Exactly as shown on Form P-5, Organization Report) APACHE CORPORATION			RRC Operator No. 027200		9. Well No. 1
4. ADDRESS 6120 S. YALE, SUITE 1500 TULSA, OK 74136			10. County of well site REAGAN		
5. If Operator has changed within last 60 days, name former operator			11. Purpose of filing Initial Potential <input checked="" type="checkbox"/> Retest <input type="checkbox"/> Reclass <input checked="" type="checkbox"/> Well record only <input type="checkbox"/> (explain in Remarks)		
6a. Location (Section, Block, and Survey) SEC 17, BLK 6, UL SVY			6b. Distance and direction to nearest town in this county. 28 MILES SW FROM BIG LAKE		
12. If workover or reclass, give former field (with reservoir) & gas ID or oil lease no. FIELD & RESERVOIR GRIERSON SPRING (STRAWN)			GAS ID or OIL LEASE # 164661	Oil - O Gas - G G	WELL NO. 1
13. Type of electric or other log run			14. Completion or recompletion date 09/25/2009		

SECTION I: POTENTIAL TEST DATA IMPORTANT: Test should be for 24 hours unless otherwise specified in field rules.

15. Date of test 10/11/2009		16. No. of hours tested 24		17. Production method (Flowing, Gas Lift, Jetting, Pumping— Size & Type of pump) PLUNGER		18. Choke Size	
19. Production during Test Period 5		Oil - BBLs 50		Gas - MCF 0		Water - BBLs 10,000	
20. Calculated 24- Hour Rate 5		Oil - BBLs 50		Gas - MCF 0		Water - BBLs 53.6	
21. Was swab used during this test? Yes <input type="checkbox"/> No <input checked="" type="checkbox"/>		22. Oil Produced prior to test (New & reworked wells) 68		23. Injection Gas-Oil Ratio		Flowing Tubing Pressure PSI	
REMARKS REPAIRED HOLE IN CASING							

AUSTIN, TEXAS

INSTRUCTIONS: File an original and one copy of the completed Form W-2 in the appropriate RRC District Office within 30 days after completing a well and within 10 days after a potential test. If an operator does not properly report the results of a potential test within the 10-day period, the effective date of the allowable assigned to the well will not extend back more than 10 days before the W-2 was received in the District Office. (Statewide Rules 16 and 51) To report a completion or recompletion, fill in both sides of this form. To report a retest, fill in only the front side.

WELL TESTER'S CERTIFICATION

I declare under penalties prescribed in Sec. 91.143, Texas Natural Resources Code, that I conducted or supervised this test by observation of (a) meter readings or (b) the top and bottom gauges of each tank into which production was run during the test. I further certify that the potential test data shown above is true, correct, and complete, to the best of my knowledge.

Signature : Well Tester

Name of Company

RRC Representative

OPERATOR'S CERTIFICATION

I declare under penalties prescribed in Sec. 91.143, Texas Natural Resources Code, that I am authorized to make this report, that this report was prepared by me or under my supervision and direction, and that data and facts stated therein are true, correct, and complete, to the best of my knowledge.

VERONICA S. CARR

Typed or printed name of operator's representative

(918) 491-4879

Telephone: Area Code Number

Date: mo. day year 10 / 12 / 2009

PROD ENG TECH II

Title of Person

Signature

RECEIVED
RRC OF TEXAS

OCT 20 2009

OIL & GAS
SAN ANGELO

OK pb ✓

SECTION II DATA ON WELL COMPLETION AND LOG (Not Required on Retest)									
24. Type of Completion New Well <input type="checkbox"/> Deepening <input type="checkbox"/> Plug Back <input type="checkbox"/> Other <input checked="" type="checkbox"/>					25. Permit to Drill, Plug Back or Deepen DATE 05/27/1997 PERMIT NO. 462938 Rule 37 CASE NO. Exception Water Injection PERMIT NO. Permit Salt Water Disposal PERMIT NO. Permit Other PERMIT NO.				
26. Notice of Intention to Drill this well was filed in Name of ENRON OIL & GAS CO.									
27. Number of producing wells on this lease in this field (reservoir) including this well 1			28. Total number of acres in this lease 653						
29. Date Plug Back, Deepening, WorkOver or Drilling Operations: 08/19/2009		Commenced 09/25/2009		Completed N/A		30. Distance to nearest well, Same Lease & Reservoir			
31. Location of well, relative to nearest lease boundaries of lease on which this well is located 2377 Feet From SOUTH Line and 1065 Feet from WEST Line of the UNIVERSITY 6-17 Lease									
32. Elevation (DF, RKB, RT, GR, ETC.) 2636 GR				33. Was directional survey made other than inclination (Form W-12)? <input type="checkbox"/> Yes <input checked="" type="checkbox"/> No					
34. Top of Pay 8591'		35. Total Depth 9097'		36. P.B. Depth 8682'		37. Surface Casing Determined by: Field <input type="checkbox"/> Rules <input type="checkbox"/>		Recommendation of T.D.W.R. Railroad Commission (Special) Dt. of Letter	
38. Is well multiple completion? NO		39. If multiple completion, list all reservoir names (completions in this well) and Oil Lease or Gas ID No. FIELD & RESERVOIR				GAS ID or OIL LEASE #		Oil-O Gas-G WELL #	
41. Name of Drilling Contractor								42. Is Cementing Affidavit Attached? <input checked="" type="checkbox"/> Yes <input type="checkbox"/> No	
43. CASING RECORD (Report All Strings Set in Well)									
CASING SIZE	WT #/FT.	DEPTH SET	MULTISTAGE TOOL DEPTH	TYPE & AMOUNT CEMENT (sacks)	HOLE SIZE	TOP OF CEMENT	SLURRY VOL. cu. ft.		
11-3/4"	42#	876'		475 SX	14-3/4"	SURF			
8-5/8"	32#24#	3119'		175 SX	11"	T.S. 2460'			
4-1/2"	11.6#	9097'		325 SX	7-7/8"	T.S. 5203'			
44. LINER RECORD									
Size	Top	Bottom	Sacks Cement	Screen					
45. TUBING RECORD									
Size	Depth Set	Packer Set	46. Producing Interval (this completion) Indicate depth of perforation or open hole						
2-3/8	8615'	3684'	From 8591'	To 8657'					
			From	To					
			From	To					
			From	To					
47. ACID, SHOT, FRACTURE, CEMENT SQUEEZE, ETC.									
Depth Interval			Amount and Kind of Material Used						
3474' - 3478'			SQZ CSG LEAK w/500 SX CMT; DO FROM 3399'-3496'						
3478' - 3482'			SQZ CSG LEAK w/25 SX CMT; DO FROM 3437'-3785'						
48. FORMATION RECORD (LIST DEPTHS OF PRINCIPAL GEOLOGICAL MARKERS AND FORMATION TOPS)									
Formations	Depth	Formations	Depth						
SAN ANDRES	3210'	DEVONIAN	9023'						
WOLFCAMP	6965'								
STRAWN	8583'								

REMARKS PREVIOUS WORK: CIBP @ 8682' w/1 SX CMT.

Cementor: Fill in shaded areas.
Operator: Fill in other items.

RAILROAD COMMISSION OF TEXAS
Oil and Gas Division

Form W-15
Cementing Report
Rev. 4/1/83
483-045

1. Operator's Name (As shown on Form P-5, Organization Report) APACHE CORPORATION	2. RRC Operator No. 027200	3. RRC District No. 7C	4. County of Well Site REAGAN
5. Field Name (Wildcat or exactly as shown on RRC Records) Grierson Spring (Strawn)		6. API No. 42-383-34774	7. Drilling Permit No.
8. Lease Name UNIVERSITY 6-17	9. Rule 37 Case No.	10. Oil Lease/Gas ID No.	11. Well No. #1

CASING CEMENTING DATA:		Surface Casing	INTER-MEDIATE CASING	PRODUCTION CASING		MULTI-STAGE CEMENTING PROCESS	
				Single String <i>(Casing Repair)</i>	Multiple Parallel Strings	Tool	Shoe
12. Cementing Date				8-27-09			
13. • Drilled Hole Size				N/A			
• Est. % wash or hole enlargement				N/A			
14. Size of casing (in. O.D.)				N/A			
15. Top of liner (ft.)				N/A			
16. Setting depth (ft.)				N/A			
17. Number of centralizers used				N/A			
18. Hrs. Waiting on cement before drill-out				7.2			
1 st Slurry	19. API cement used: No. of sacks ▶			400			
	Class ▶			"C"			
	Additives ▶			#22			
2 nd Slurry	No. of sacks ▶			100			
	Class ▶			"C"			
	Additives ▶			#22			
3 rd Slurry	Class ▶						
	Additives ▶						
1 st	20. Slurry pumped: Volume (cu. ft.) ▶			812			
	Height (ft.) ▶			3564			
2 nd	Volume (cu. ft.) ▶			134			
	Height (ft.) ▶			588			
3 rd	Volume (cu. ft.) ▶						
	Height (ft.) ▶						
Total	Volume (cu. ft.) ▶			946			
	Height (ft.) ▶			4152			
21. Was cement circulated to ground surface (or bottom of cellar) outside casing?				NO			

RECEIVED
RRC OF TEXAS
OCT 20 2009
OIL & GAS
SAN ANGELO

Remarks: 1ST SLURRY "C" 35/65 POZ - 6% GEL + 5# SALT (BWOW) + 2# KOLSEAL + 25# CELLOFLAKE - 01% STATIC FREE 2ND SLURRY "C" + 2% CACL2

Repair casing leak @ 3474' - 3478'

CEMENTING TO PLUG AND ABANDON	PLUG #1	PLUG #2	PLUG #3	PLUG #4	PLUG #5	PLUG #6	PLUG #7	PLUG #8
23. Cementing date								
24. Size of hole or pipe plugged (in.)								
25. Depth to bottom of tubing or drill pipe (ft.)								
26. Sacks of cement used (each plug)								
27. Slurry volume pumped (cu. ft.)								
28. Calculated top of plug (ft.)								
29. Measured top of plug, if tagged (ft.)								
30. Slurry wt. (lb/gal)								
31. Type cement								

CEMENTER'S CERTIFICATE: I declare under penalties in Sec. 91.143, Texas Natural Resources Code, that I am authorized to make this Certification, that the cementing of casing and/or the placing of cement plugs in this well as shown in the report was performed by me or under my Supervision, and that the cementing data and facts presented on both sides of this form are true, correct, and complete, to the best of my knowledge. This certification covers cementing data only.

JULIO CASTILLO, Service Sup.

Name and title of cementer's representative

BJ Services Company

Cementing Company

P.O. Box 1135

Address

Eldorado
City,

Texas
State,

76936
Zip Code

(325) 853-2553

Tel: Area Code Number

8-27-09

Date: mo. Day yr.

OPERATOR'S CERTIFICATE: I declare under penalties prescribed in Sec. 91.143, Texas Natural Resources Code, that I am authorized to make this certification, that I have knowledge of the well data and information presented in this report, and that data and facts presented on both sides of this form are true, correct, and complete, to the best of my knowledge. This certification covers all well data.

Veronica S. Carr

Typed or printed name of operator's representative

Prod Eng Tech II

Title

Veronica S. Carr

Signature

6120 S. Vali Suite 1500
Address

Tulsa
City,

Ok
State,

74136
Zip Code

918-491-4879
Tel: Area Code Number

9/18/2009
Date: mo. day yr.

Instructions to Form W-15, Cementing Report

IMPORTANT: Operators and cementing companies must comply with the requirements of the Commission's Statewide Rules 8 (Water Protection), 13 (Casing, Cementing, Drilling, and Completion), and 14 (Well Plugging). For offshore operations, see the requirements of Rule 13 (c).

A. What to file. An operator should file an original and one copy of the completed Form W-15 for each cementing company used on a well. The cementing of different casing strings on a well by one cementing company may be reported on one form. Form W-15 should be filed with the following.

- An initial oil or gas completion report, Form W-2 or G-1, as required by Statewide or special field rules;
- Form W-4, Application for Multiple Completion, if the well is a multiple parallel casing completion; and
- Form W-3, Plugging Record, unless the W-3 is signed by the cementing company representative. When reporting dry holes, operators must complete Form W-15, in addition to Form W-3, to show any casing cemented in the hole.

B. Where to file. The appropriate Commission District Office for the county in which the well is located.

C. Surface Casing. An operator must set and cement sufficient surface casing to protect all usable-quality water strata, as defined by the Texas Department of Water Resources, Austin. Before drilling a well in any field or area in which no field rules are in effect or in which surface casing requirements are not specified in the applicable rules, an operator must obtain a letter from the Department of Water Resources stating the protection depth. Surface casing should not be set deeper than 200 feet below the specified depth without prior approval from the Committee.

D. Centralizers. Surface Casing must be centralized at the shoe, above and below a stage collar or diverting tool, if run, and through usable-quality water zones. In Non-deviated holes, a centralizer must be placed every fourth joint from the cement shoe to the ground surface or to the bottom of the cellar. All centralizers must meet API specifications.

E. Exceptions and alternative casing programs. The District Director may grant an exception to the requirements of Statewide Rule 13. In a written application, an operator must state the reason for the requested exception and outline an alternate program for casing and cementing through the protection depth for strata containing usable-quality water. The District Director may approve, modify, or reject a proposed program. An operator must obtain approval of any exception before beginning casing and cementing operations.

F. Intermediate and production casing. For specific technical requirements, operators should consult Statewide Rule 13 (3) and (4).

G. Plugging and abandoning. Cement plugs must be placed in the wellbore as required by Statewide Rule 14. The District Director may require additional cement plugs. For onshore or inland wells, a 10-foot cement plug must be placed in the top of the well, and the casing must be cut off three feet below the ground surface. All cement plugs, except the top plug, must have sufficient slurry volume to fill 100 feet of hole, plus ten percent for each 1,000 feet of depth from the ground surface to the bottom of the plug.

To plug and abandon a well, operators must use only cementers approved by the Director of Field Operations, Cementing companies, service companies or operators can qualify as approved cementers by demonstrating that they are able to mix and pump cement in compliance with Commission rules and regulations.

Cementor: Fill in shaded areas.
Operator: Fill in other items.

RAILROAD COMMISSION OF TEXAS
Oil and Gas Division

Form W-15
Cementing Report
Rev. 4/1/83
483-045

1. Operator's Name (As shown on Form P-5, Organization Report) Apache Corporation	2. RRC Operator No. 027200	3. RRC District No. 7C	4. County of Well Site Reagan
5. Field Name (Wildcat or exactly as shown on RRC Records) Gruenow Spring (Strawn)		6. API No. 42-383-34774	7. Drilling Permit No.
8. Lease Name University 6-17	9. Rule 37 Case No.	10. Oil Lease/Gas ID No.	11. Well No. 6-17#1

CASING CEMENTING DATA:		SURFACE CASING	INTER-MEDIATE CASING	PRODUCTION CASING		MULTI-STAGE CEMENTING PROCESS	
				SQUEEZE	Multiple Parallel Strings	Tool	Shoe
12. Cementing Date				9-03-09			
13. • Drilled Hole Size				N/A			
• Est. % wash or hole enlargement				N/A			
14. Size of casing (in. O.D.)				N/A			
15. Top of liner (ft.)				N/A			
16. Setting depth (ft.)				N/A			
17. Number of centralizers used				N/A			
18. Hrs. Waiting on cement before drill-out				N/A			
1 st Slurry	19. API cement used: No. of sacks ▶			26			
	Class ▶			C			
	Additives ▶			#22			
2 nd Slurry	No. of sacks ▶						
	Class ▶						
	Additives ▶						
3 rd Slurry	No. of sacks ▶						
	Class ▶						
	Additives ▶						
1 st	20. Slurry pumped: Volume (cu. ft.) ▶			35			
	Height (ft.) ▶			588			
2 nd	Volume (cu. ft.) ▶						
	Height (ft.) ▶						
3 rd	Volume (cu. ft.) ▶						
	Height (ft.) ▶						
Total	Volume (cu. ft.) ▶			35			
	Height (ft.) ▶			588			
21. Was cement circulated to ground surface (or bottom of cellar) outside casing ?				No			
Remark: #22 - C-Neat Repair esg leak @ 3478' - 3482'							

RECEIVED
RRC OF TEXAS
OCT 20 2009

CEMENTING TO PLUG AND ABANDON	PLUG #1	PLUG #2	PLUG #3	PLUG #4	PLUG #5	PLUG #6	PLUG #7	PLUG #8
23. Cementing date								
24. Size of hole or pipe plugged (in.)								
25. Depth to bottom of tubing or drill pipe (ft.)								
26. Sacks of cement used (each plug)								
27. Slurry volume pumped (cu. ft.)								
28. Calculated top of plug (ft.)								
29. Measured top of plug, if tagged (ft.)								
30. Slurry wt. (lb/gal)								
31. Type cement								

CEMENTER'S CERTIFICATE: I declare under penalties in Sec. 91.143, Texas Natural Resources Code, that I am authorized to make this Certification, that the cementing of casing and/or the placing of cement plugs in this well as shown in the report was performed by me or under my Supervision, and that the cementing data and facts presented on both sides of this form are true, correct, and complete, to the best of my knowledge. This certification covers cementing data only.

Dale Tomlinson, Service Supervisor

Name and title of cementer's representative

BJ Services Company

Cementing Company

Dale Tomlinson
Signature

P.O. Box 1135

Address

Eldorado

City,

Texas

State,

76936

Zip Code

(325) 853-2553

Tel.: Area Code Number

09-03-09

Date: mo day yr.

OPERATOR'S CERTIFICATE: I declare under penalties prescribed in Sec. 91.143, Texas Natural Resources Code, that I am authorized to make this certification, that I have knowledge of the well data and information presented in this report, and that data and facts presented on both sides of this form are true, correct, and complete, to the best of my knowledge. This certification covers all well data

Veronica S. Carr

Typed or printed name of operator's representative

Prod Eng Tech II
Title

Veronica S. Carr
Signature

6120 S. Yale Suite 1500
Address

Tulsa
City,

Ok 74136
State, Zip Code

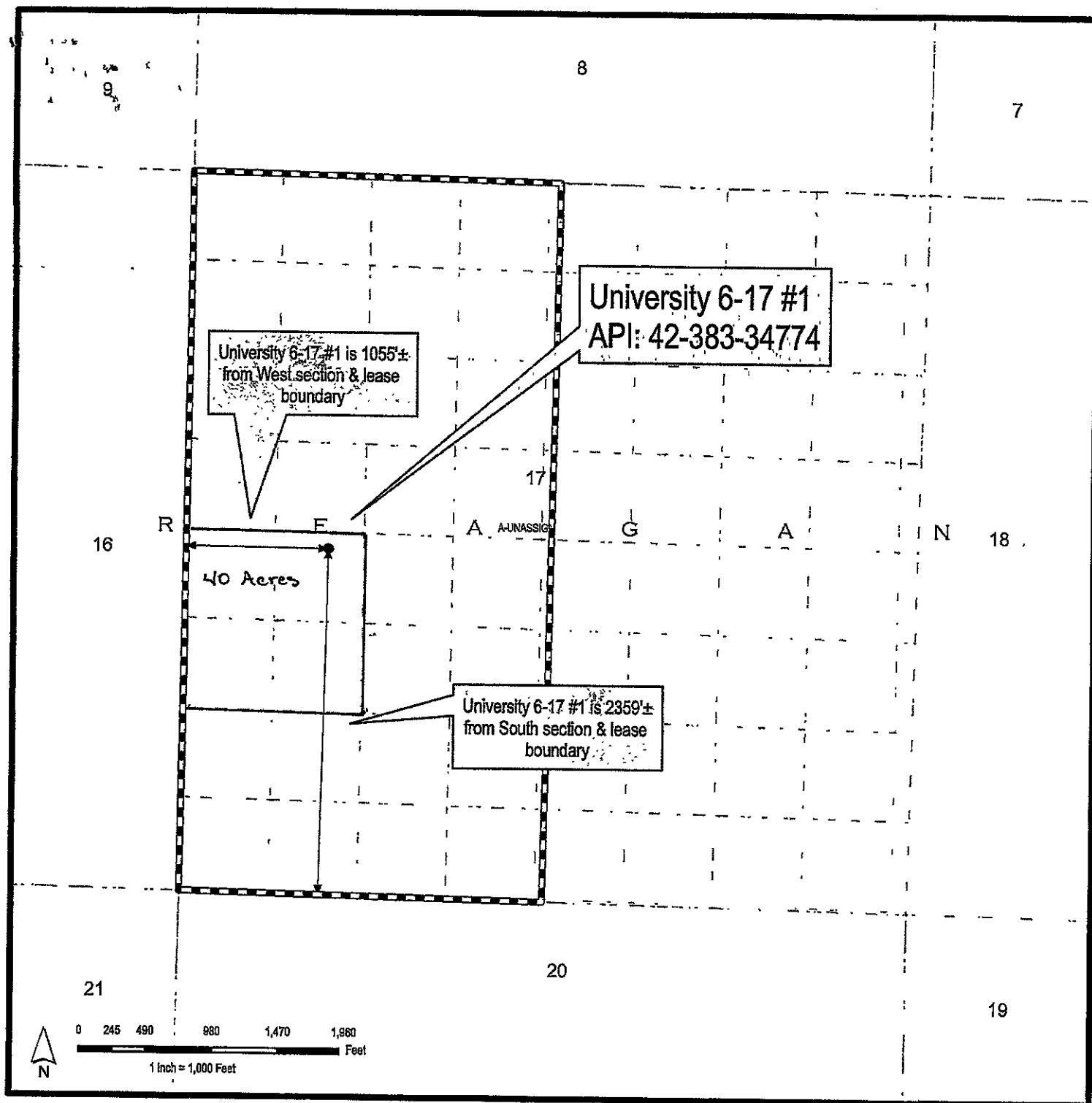
918-491-4900
Tel.: Area Code Number

10/1/2009
Date: mo. day yr.

Instructions to Form W-15, Cementing Report

IMPORTANT: Operators and cementing companies must comply with the requirements of the Commission's Statewide Rules 8 (Water Protection), 13 (Casing, Cementing, Drilling, and Completion), and 14 (Well Plugging). For offshore operations, see the requirements of Rule 13 (c).

- A. What to file. An operator should file an original and one copy of the completed Form W-15 for each cementing company used on a well. The cementing of different casing strings on a well by one cementing company may be reported on one form. Form W-15 should be filed with the following.
- An initial oil or gas completion report, Form W-2 or G-1, as required by Statewide or special field rates;
 - Form W-4, Application for Multiple Completion, if the well is a multiple parallel casing completion; and
 - Form W-3, Plugging Record, unless the W-3 is signed by the cementing company representative. When reporting dry holes, operators must complete Form W-15, in addition to Form W-3, to show any casing cemented in the hole.
- B. Where to file. The appropriate Commission District Office for the county in which the well is located.
- C. Surface Casing. An operator must set and cement sufficient surface casing to protect all usable-quality water strata, as defined by the Texas Department of Water Resources, Austin. Before drilling a well in any field or area in which no field rules are in effect or in which surface casing requirements are not specified in the applicable rules, an operator must obtain a letter from the Department of Water Resources stating the protection depth. Surface casing should not be set deeper than 200 feet below the specified depth without prior approval from the Committee.
- D. Centralizers. Surface Casing must be centralized at the shoe, above and below a stage collar or diverting tool, if run, and through usable-quality water zones. In Non-deviated holes, a centralizer must be placed every fourth joint from the cement shoe to the ground surface or to the bottom of the cellar. All centralizers must meet API specifications.
- E. Exceptions and alternative casing programs. The District Director may grant an exception to the requirements of Statewide Rule 13. In a written application, an operator must state the reason for the requested exception and outline an alternate program for casing and cementing through the protection depth for strata containing usable-quality water. The District Director may approve, modify, or reject a proposed program. An operator must obtain approval of any exception before beginning casing and cementing operations.
- F. Intermediate and production casing. For specific technical requirements, operators should consult Statewide Rule 13 (3) and (4).
- G. Plugging and abandoning. Cement plugs must be placed in the wellbore as required by Statewide Rule 14. The District Director may require additional cement plugs. For onshore or inland wells, a 10-foot cement plug must be placed in the top of the well, and the casing must be cut off three feet below the ground surface. All cement plugs, except the top plug, must have sufficient slurry volume to fill 100 feet of hole, plus ten percent for each 1,000 feet of depth from the ground surface to the bottom of the plug.
- To plug and abandon a well, operators must use only cementers approved by the Director of Field Operations, Cementing companies, service companies or operators can qualify as approved cementers by demonstrating that they are able to mix and pump cement in compliance with Commission rules and regulations.



Well Plat
University 6-17 #1
API: 42-383-34774
University Land Survey
Block 6
Section 17
Reagan County, Texas

LEGEND

- University 6-17 Lease Boundary
- 10 Acre Grid Cells [Except along the South & East lines of Section 17, where the grid cells are ≠ 10 acres]

RECEIVED
RRC OF TEXAS
OCT 20 2009
OIL & GAS
SAN ANGELO

CERTIFICATION STATEMENT

All information on this plat is
true to the best of my belief
and knowledge.

[Signature]
Date: 10/19/09



TWO WARREN PLACE / SUITE 1500 / 6120 S. YALE / TULSA, OKLAHOMA 74136-4224

WWW.APACHECORP.COM
Telephone: (918) 491-4900

October 19, 2009

Railroad Commission of Texas
1701 N. Congress Ave.
Austin, TX 78711


RE: Reclassification
University 6-17 #1
API # 42-383-34774
District 7C, Reagan Co, TX

Attached are completion papers for the above mentioned wellbore. Upon repairing a hole in the casing this well started producing more oil therefore changing the GOR to make this an oil well. Please let me know what the new oil lease number will be so that I can pass it on to our production department so that the production will be reported properly.

Should you have any questions, please contact me by phone at 918-491-4879, or by e-mail at veronica.carr@apachecorp.com.

*sent
email
10/30/09*

Respectfully,


Veronica S. Carr
Prod. Eng. Tech II

RECEIVED
RRC OF TEXAS
OCT 20 2009
OIL & GAS
SAN ANGELO