



Yates Daily Drilling Report

Report Date: 11/10/2007

UNIVERSITY DEVIL WOMAN L5 #1

Report #:

Day # 1

Bit Record				API/UWI	County	State	Surface Legal Location					
Bit Number	Drill Bit	Dull Out	Nozzles (#/2")	4222930253	HUDSPETH	TEXAS	TX RRC DIST 8/SURV UL/ABS NA/BL L/SEC 5					
Depth In (ftKB)	Depth Out (ft...)	Depth Drill...	Job Drill Hr...	Avg ROP...	Operator	Hole Direction	N/S Dist...	N/S Ref	E/W Dist...	E/W Ref	Gr Elev (ft)	Orig KB Elev...
					TRAIL MOUNTAIN, INC.	VERTICAL	660.0	FSL	660.0	FEL	4,006.00	4,014.00
Jobs												
AFE Number		Total AFE Amount		Tgt Depth (ftKB)		Target Formation		Bottom Hole Legal Location				Drill Hrs...
073960		1,016,550.00		3,000.0		SILURIAN		TX RRC DIST 8/SURV UL/ABS NA/BL L/SEC 5				23.75
Daily Cost Total			Cum Cost To Date			Daily Mud Cost			Mud Additive Cost To Date			
21,049.29			84,970.95									
Day No.		Report End Date		Formation at Report Time		Lithology		Present Operations				
1		11/10/2007		SURFACE		SURFACE		RUN CASING				
Hole Direction: VERTICAL - Original Hole, 11/10/2007 5:59:...		Schematic - Actual		Depth End (ftKB)		Depth Start (ftKB)		Depth Progress (ft)		Drilling Hours (hrs)		Average ROP (ft/hr)
ftKB (MD)												
Remarks												
RUNING 8 5/8 CASING												
Avg Background Gas (unit)				Max Background Gas (unit)				Avg Connection Gas (unit)				Max Connection Gas (unit)
Avg Trip Gas (unit)				Max Trip Gas (unit)				Flare				
Mud Checks												
Weight (lb/gal)		Chlorides (ppm)		Calcium (ppm)		Solids (%)		LCM				
8.50												
Funnel Viscosity (s/g)		PV (cp)		YP (lb/100ft ²)		Gel 10 sec (lb/100ft ²)		Gel 10 min (lb/100ft ²)		pH		
34										11.0		
Water Loss (mL/30min)				Filter Cake (52")				KCl (%)		Percent Oil (%)		
Time Log												
Start Time		Our (hrs)		End Time		Cum Our (hrs)		Time Code		Depth Start (ftKB)		Depth End (ftKB)
06:00		2.00		08:00		2.00		MIX SPUD MUD				
08:00		19.50		03:30		21.50		SPUD WELL		8.0		179.0
03:30		0.25		03:45		21.75		CIRCULATE		179.0		
03:45		1.25		05:00		23.00		TRIP OUT				
05:00		1.00		06:00		24.00		RUN CASING				
ALERTED RR COMITION OF SPUD AND CEMENT JOB, CEMENT PLANS WERE CHANGED BY RR COMITION, Mr. MILLS												
DRILLING SURFACE, VERY HARD FORMATION												
PUMP SWEEP & CIRCULATE												
TOH TO RUN CASING												
RIG UP CASING EQUIPMENT AND RUN 4 JOINTS OF 8 5/8 24# TOTOL PIPE 171.67 + LANDING JIONT												
Daily Costs												
Cost Description				Cost Details				Cost		Vendor		
Drilling, Daywork								17,500.00		UNITED DRILLING		
Supervision & Overhead - Drilling								1,200.00		RGI INC.		
Supervision & Overhead - Drilling				Communication				125.00		PASON		
Supervision & Overhead - Drilling				Trailer Rental				75.00		RGI INC.		
Drilling Water, Fasline Rental				Water Hauling				1,039.29		JIM'S WATER SERVICE		
Tools & Equip. Rental, Etc. - Completions				Light Plant				110.00		LIGHT TOWER		
Bits, Tool & Supplies Purchase - Drilling								1,000.00		HUGHES TOOL		
Daily Contacts												
Job Contact				Company				Phone Mobile				
TIM BUSSELL, DRLG SUPERINTENDENT				YATES				575-365-5695				
Job Contact				Company				Phone Mobile				
JOE ORONA, DRILLING CONSULTANT				RIG				575-631-6924				
Job Contact				Company				Phone Mobile				
MIKE HILL, ENGINEER				YATES				575-365-8706				
Job Contact				Company				Phone Mobile				
DAVID PROSE, GEOLOGIST								817-937-3229				
Job Contact				Company				Phone Mobile				
ROB BULLOCK, LANDMAN				YATES								
Job Contact				Company				Phone Mobile				
RIG FLOOR - 34, RIG PHONE				UNITED DRILLING COMPANY				575-910-0365				
Rigs												
Rig Contractor				Rig Number				KB from GL (ft)		Rig Type		
UNITED DRILLING, INC.				34				8.00		Drilling - Single		
Mud Pumps - 1												
No.		Start Date		Make		Model		Pwr (hp)		Rod Dia (in)		
1		11/5/2007 00:00		Upetrom				500.0		2		
Liner Size (in)		Start Date		End Date		Maximum Pressure (psi)		Vol/Str - 100% (bbl/s)				
7 1/4		11/5/2007 00:00		10/28/2008 00:00				0.229				
Pump Checks												
Pump Number		Date		Depth (ftKB)		Slow Spd		Strokes (spm)		Pressure (psi)		
1		11/10/2007 03:30		179.0		No		65		350.0		
Mud Pumps - 2												
No.		Start Date		Make		Model		Pwr (hp)		Rod Dia (in)		
2		11/5/2007 00:00		Gardner Denver		FNX		500.0		2		



Yates Daily Drilling Report

Report Date: 11/10/2007

UNIVERSITY DEVIL WOMAN L5 #1

Report #:

Day # 1

Liner Size (in)	7 1/4	Start Date	11/5/2007 00:00	End Date	10/30/2008 00:00	Maximum Pressure (psi)	Vol/Str - 100% (bbl/s)
Safety Checks							
Date	Description		Type	Comment			
Mud Additive Amounts							
Description	Type		Consumed	Units			
Paper	LCM		20.0	sacks			
Description	Type		Consumed	Units			
Yellow Starch			24.0	sacks			
Casing Strings							
Casing Description	Run Date	Depth Cut Pull (ft)	Set Depth (ft)	OD (in)	ID (in)		
Surface	11/10/2007 05:00	8.0	179.0	8 5/8	8.097		
Hole Direction: VERTICAL - Original Hole, 11/10/2007 5:59:00							
General Rig - Original Hole							
Wellbore Name	Parent Wellbore	Bottom Hole Legal Location	Hole Direction	Job			
Original Hole		TX RRC DIST 8/SURV UL/ABS NA/B/L I/SEC 5	VERTICAL	New Drilling, New Well, Drilling & Completions on 10/9/2007 06:00			
Survey Data							
Date	Description	Measured Depth (ft)	Inclination (°)	Azimuth (°)			
	General Rig						

Depth (ft)	Original Hole, 12 1/4, 8-249	Surface, 8 5/8, 7, 171.8	TD, 249, 11/9/2007
0			
7			
8			
135			
135			
150			
177			
179			
249			
3,000			



Yates Daily Drilling Report

Report Date: 11/11/2007

Report #: 23.0

UNIVERSITY DEVIL WOMAN L5 #1

Day # 2

Bit Record					API (UWI)		County		State		Surface Legal Location				
Bit Number 2	Drill Bit Bit # 2 - 7 7/8, GT-30C, 5133257	Dull Out -----	Nozzles (1/32")		4222930253	HUDSPETH	TEXAS	TX RRC DIST 8/SURV UL/ABS NA/BL L/SEC 5							
Operator TRAIL MOUNTAIN, INC.					Hole Direction VERTICAL		N/S Dist ... 660.0	N/S Ref FSL	E/W Dist ... 660.0	E/W Ref FEL	Gr Elev (ft) 4,006.00	Orig KB Elev ... 4,014.00			
Jobs					AFE Number 073960	Total AFE Amount 1,016,550.00	Tgt Depth (ftKB) 3,000.0	Target Formation SILURIAN	Bottom Hole Legal Location TX RRC DIST 8/SURV UL/ABS NA/BL L/SEC 5			Drill Hrs... 23.75			
Daily Cost Total 27,925.17					Cum Cost To Date 112,896.12		Daily Mud Cost 700.00		Mud Additive Cost To Date 700.00						
Day No. 2					Report End Date 11/11/2007 05:59		Formation at Report Time SURFACE		Lithology		Present Operations DRILLING				
Hole Direction: VERTICAL - Original Hole, 11/11/2007 5:59... ftKB (MD)					Depth End (ftKB) 249.0		Depth Start (ftKB) 179.0		Depth Progress (ft) 70.00		Drilling Hours (hrs) 1.50	Average ROP (ft/hr) 46.7			
Remarks DRILLING 7 7/8 HOLE															
Avg Background Gas (unit)					Max Background Gas (unit)		Avg Connection Gas (unit)		Max Connection Gas (unit)						
Avg Trip Gas (unit)					Max Trip Gas (unit)		Flare								
Mud Checks															
Weight (lb/gal)			Chlorides (ppm)			Calcium (ppm)			Solids (%)			LCM			
Funnel Viscosity (s/g)			PV (cp)			YP (lb/100ft ²)			Gel 10 sec (lb/100ft ²)			Get 10 min (lb/100ft ²) pH			
Water Loss (mL/30min)					Filter Cake (3/32")			KCl (%)			Percent Oil (%)				
Comment															
Time Log															
Start Time	Our (hrs)	End Time	Cum Dur (hrs)	Time Code	Depth Start (ftKB)	Depth End (ftKB)	Comment								
06:00	1.50	07:30	1.50	RUN CASING			RUNNING 8 5/8 CASING								
07:30	0.25	07:45	1.75	WASH TO BOTTOM			WASH CASING BOTTOM, HAD 15' OF FILL								
07:45	0.50	08:15	2.25	RIG UP CEMENTER AND CIRCULATE			RIG CREWS AND CEMENTERS HELD SAFTY MEETING PRIOR TO STARTING CEMENT JOB								
08:15	0.25	08:30	2.50	CEMENTING			CEMENTED W/ HALIBURTON CEMENT LEAD 125 SKS PREMIUM PLUS+ 2% CALCIUM CHLORIDE@14.8								
08:30	8.00	16:30	10.50	WAIT ON CEMENT											
16:30	0.50	17:00	11.00	TEST CASING			TESTED CASING TO 600 # STARING PSI 600, ENDING PSI 550								
17:00	7.50	00:30	18.50	NU BOP & WELLHEAD			NIPPLE UP AND WOC								
00:30	0.50	01:00	19.00	TRIP IN			TIH, PICK UP NEW BHA								
01:00	1.00	02:00	20.00	DRILL CEMENT AND/OR FLOAT EQUIPMENT											
02:00	0.50	02:30	20.50	TEST BOP			FUNCTION TEST HYDRILL AND CHOKE MANUFOLD TO 200 #								
02:30	0.25	02:45	20.75	DEVIATION SURVEY			WLS@155 -2"								
02:45	1.75	04:30	22.50	DISPLACE HOLE			CHANGE FROM MUD PUMPS TO AIR MIST,								
04:30	1.50	06:00	24.00	DRILLING	179.0	249.0	DRILLING W/ AIR MIST								
Daily Costs															
Cost Description				Cost Details		Cost		Vendor							
Drilling, Daywork						12,500.00		UNITED DRILLING							
Supervision & Overhead - Drilling						1,200.00		RGI INC.							
Supervision & Overhead - Drilling				Communication		125.00		PASON							
Supervision & Overhead - Drilling				Trailer Rental		75.00		RGI INC.							
Drilling Water, Fasline Rental				Water Hauling				JIM'S WATER SERVICE							
Tools & Equip. Rental, Etc.- Completions				Light Plant		110.00		LIGHT TOWER							
Cementing - Surface & Intermediate Casing						13,215.17		HALLIBURTON ENERGY SERVICES							
Drilling Mud & Additives						700.00		ARTESIA LUMBER COMPANY							
Daily Contacts															
Job Contact				Company		Phone Mobile									
TIM BUSSELL, DRLG SUPERINTENDENT				YATES		575-365-5695									
Job Contact				Company		Phone Mobile									
JOE ORONA, DRILLING CONSULTANT				RIG		575-631-6924									
Job Contact				Company		Phone Mobile									
MIKE HILL, ENGINEER				YATES		575-365-8706									

0

7

8

42

135

135

150

177

179

248

249

915

3,000

Original Hole, 12 1/4, 8-249

Surface, 8 5/8, 7, 171.8

Surface, 8-179

Original Hole, 7 7/8, 179-915

TD, 915, 11/11/2007



Yates Daily Drilling Report

Report Date: 11/11/2007

UNIVERSITY DEVIL WOMAN L5 #1

Report #: 23.0

Day # 2

Daily Contacts	
Job Contact	Company
DAVID PROSE, GEOLOGIST	817-937-3229
Job Contact	Company
ROB BULLOCK, LANDMAN	YATES
Job Contact	Company
RIG FLOOR - 34, RIG PHONE	UNITED DRILLING COMPANY
575-910-0365	
Rigs	
Rig Contractor	Rig Number
UNITED DRILLING, INC.	34
KB from GL (ft)	Rig Type
8.00	Drilling - Single
Mud Pumps - 1	
No.	Start Date
1	11/5/2007 00:00
Make	Model
Upetrom	
Pwr (hp)	Rod Dia (in)
500.0	2
Mud Pumps - 2	
No.	Start Date
2	11/5/2007 00:00
Make	Model
Gardner Denver	FNX
Pwr (hp)	Rod Dia (in)
500.0	2
Safety Checks	
Date	Description
11/10/2007	CEMENT JOB
07:45	
Type	Comment
Other	RIG PERSONAL AND CEMENTERS HELD SAFETY MEETING PRIOR TO CEMENTING SURFACE
Mud Additive Amounts	
Description	Type
	Consumed
	Units
Drill Strings: BHA #2, Slick	
Bit Number	Drill Bit
2	8112 - 77/8, GT-300 - 5133257
Depth In (ftKB)	Depth Out (ftKB)
179.0	249.0
Drilled (ft)	Drill Time (hrs)
70.00	1.50
BHA ROP (ft/hr)	
46.7	
String Length (ft)	String Wt (1000lb)
207.34	17
OD (in)	ADC Bit Dull
6.250	
YFA (in)	Nozzles (32")
Drill Form - Drilling Parameters: 179.0 ftKB - 249.0 ftKB -	
WOB (1000lb)	RPM (rpm)
15	65
Motor R...	Bit RPM ...
65	
SPP (psi)	Q (flow) (g...)
	25
Rot. String Wt. (lb...)	PU Str Wt (100...)
25	25
SO Str Wt (100...)	
25	
Item Description	
OD (in)	ID (in)
6 1/4	2.750
Grade	Mass Len (lbs/ft)
	84.00
Top Thread	Len (ft)
	206.34
Jis	7
Drill Collar	
Casing Strings	
Casing Description	Run Date
Surface	11/10/2007 05:00
Depth Cut Pull (ft...)	Sol Depth (ftKB)
8.0	179.0
OD (in)	ID (in)
8 5/8	8.097
General Rig - Original Hole	
Wellbore Name	Parent Wellbore
Original Hole	
Bottom Hole Legal Location	Hole Direction
TX RRC DIST	VERTICAL
8/SURV UL/ABS	
NA/VL L/SEC 5	
Job	
New Drilling, New Well, Drilling & Completions on	
10/9/2007 06:00	
Survey Data	
Date	Description
11/11/2007 2:30:00 AM	General Rig
Measured Depth (ftKB)	Inclination (°)
155.00	2.00
Azimuth (°)	
0.00	

Hole Direction: VERTICAL - Original Hole, 11/11/2007 5:59:...

ftKB (MD)

Schematic - Actual

0

7

8

42

135

135

150

177

179

248

249

915

3,000

Original Hole, 12 1/4, 8-249

Surface, 8-179

Surface, 8 5/8, 7, 171.8

Original Hole, 7 7/8, 179-915

TD, 915, 11/11/2007



Yates Daily Drilling Report

Report Date: 11/12/2007

Report #: 24.0

UNIVERSITY DEVIL WOMAN L5 #1

Day # 3

Bit Record					APBUWI		County		State		Surface Legal Location			
Bit Number 2	Drill Bit Bit # 2 - 7 7/8, GT-30C, 5133257	Dull Out -----	Nozzles (#32")		4222930253	HUDSPETH	TEXAS	TX RRC DIST 8/SURV UL/ABS NA/BL L/SEC 5						
Operator TRAIL MOUNTAIN, INC.					Hole Direction VERTICAL		N/S Dist 660.0	N/S Ref FSL	E/W Dist 660.0	E/W Ref FEL	Gr Elev (ft) 4,006.00	Orig KB Elev 4,014.00		
Depth In (ftKB) 179.0					Total AFE Amount 073960		Tgt Depth (ftKB) 3,000.0		Target Formation SILURIAN		Bottom Hole Legal Location TX RRC DIST 8/SURV UL/ABS NA/BL L/SEC 5			
Depth Out (ft...) 915.0					Total AFE Amount 1,016,550.00		Tgt Depth (ftKB) 3,000.0		Target Formation SILURIAN		Bottom Hole Legal Location TX RRC DIST 8/SURV UL/ABS NA/BL L/SEC 5			
Depth Drill... 736.00					Job Drill Hr... 23.75		Avg ROP... 31.0		Daily Cost Total 15,059.00		Cum Cost To Date 127,955.12			
Day No. 3					Report End Date 11/12/2007 05:59		Formation at Report Time TUBB		Lithology		Present Operations DRILLING			
Hole Direction: VERTICAL - Original Hole, 11/12/2007 5:59... (ftKB (MD))					Depth End (ftKB) 915.0		Depth Start (ftKB) 249.0		Depth Progress (ft) 666.00		Drilling Hours (hrs) 22.25			
Schematic - Actual					Avg ROP (ft/hr) 29.9									
Remarks DRILLING WITH AIR MIST, HIT WATER @ 708' GIVING 48 BBLS AN HOUR.														
Avg Background Gas (unit)				Max Background Gas (unit)				Avg Connection Gas (unit)				Max Connection Gas (unit)		
Avg Trip Gas (unit)				Max Trip Gas (unit)				Flare						
Mud Checks														
Weight (lb/gal)				Chlorides (ppm)				Calcium (ppm)				Solids (%)		
Funnel Viscosity (s/qt)				YP (cp)				Gel 10 sec (lb/100ft ²)				Gel 10 min (lb/100ft ²)		
Water Loss (ml/30min)				Filter Cake (#32")				KCl (%)				Percent Oil (%)		
Comment														
Time Log														
Start Time		Dur (hrs)		End Time		Cum Dur (hrs)		Time Code		Depth Start (ftKB)		Depth End (ftKB)		
06:00		2.00		08:00		2.00		DRILLING		249.0		303.0		
08:00		0.25		08:15		2.25		DEVIATION SURVEY				WLS @261-2 1/4"		
08:15		5.75		14:00		8.00		DRILLING		303.0		431.0		
14:00		0.50		14:30		8.50		DEVIATION SURVEY				WLS@389-2"		
14:30		0.50		15:00		9.00		DRILLING		431.0		451.0		
15:00		0.50		15:30		9.50		RIG REPAIR				RIG REPAIR, CHANGE OUT U-JOINTS ON ROTARY TABLE		
15:30		1.50		17:00		11.00		DRILLING		451.0		494.0		
17:00		0.25		17:15		11.25		RIG REPAIR				RIG REPAIR, CHANGE OUT FUEL FILTERS		
17:15		3.75		21:00		15.00		DRILLING		494.0		652.0		
21:00		0.25		21:15		15.25		DEVIATION SURVEY				WLS@620-2"		
21:15		8.75		06:00		24.00		DRILLING		652.0		915.0		
Daily Costs														
Cost Description				Cost Details				Cost		Vendor				
Drilling, Daywork								12,500.00		UNITED DRILLING				
Supervision & Overhead - Drilling								1,200.00		RGI INC.				
Supervision & Overhead - Drilling				Communication				125.00		PASON				
Supervision & Overhead - Drilling				Trailer Rental				75.00		RGI INC.				
Drilling Water, Fasline Rental				Water Hauling				1,049.00		JIM'S WATER SERVICE				
Tools & Equip. Rental, Etc.- Completions				Light Plant				110.00		LIGHT TOWER				
Daily Contacts														
Job Contact				Company				Phone Mobile						
TIM BUSSELL, DRLG SUPERINTENDENT				YATES				575-365-5695						
Job Contact				Company				Phone Mobile						
JOE ORONA, DRILLING CONSULTANT				RIG				575-631-6924						
Job Contact				Company				Phone Mobile						
MIKE HILL, ENGINEER				YATES				575-365-8706						
Job Contact				Company				Phone Mobile						
DAVID PROSE, GEOLOGIST				YATES				817-937-3229						
Job Contact				Company				Phone Mobile						
ROB BULLOCK, LANDMAN				YATES				575-910-0365						
Job Contact				Company				Phone Mobile						
RIG FLOOR - 34, RIG PHONE				UNITED DRILLING COMPANY				575-910-0365						
Rigs														
Rig Contractor				Rig Number				KB from GL (ft)		Rig Type				
UNITED DRILLING, INC.				34				8.00		Drilling - Single				
Mud Pumps - 1														
No.		Start Date		Make		Model		Pwr (hp)		Rod Dia (in)				
1		11/5/2007 00:00		Upetrom				500.0		2				
Liner Size (in)		Start Date		End Date		Maximum Pressure (psi)		Vol/Stk - 100% (bbls...)						
7 1/4		11/5/2007 00:00		10/28/2008 00:00				0.229						
Mud Pumps - 2														
No.		Start Date		Make		Model		Pwr (hp)		Rod Dia (in)				
2		11/5/2007 00:00		Gardner Denver		FNX		500.0		2				
Liner Size (in)		Start Date		End Date		Maximum Pressure (psi)		Vol/Stk - 100% (bbls...)						
7 1/4		11/5/2007 00:00		10/30/2008 00:00				0.229						
Safety Checks														
Date		Description		Type		Comment								



Yates Daily Drilling Report

Report Date: 11/12/2007

Report #: 24.0

UNIVERSITY DEVIL WOMAN L5 #1

Day # 3

Mud Additive Amounts	
Description	Type
Consumed Units	

Drill Strings: BHA #3, Slick							
Bit Number	Drill Bit	Depth In (ftKB)	Depth Out (ftKB)	Drilled (ft)	Drill Time (hrs)	BHA ROP (ft/hr)	
2	ft: 2 - 7 7/8, GT-30C, 5133757	249.0	915.0	666.00	22.25	29.9	
String Length (ft)	String Wt (1000lbf)	OD (in)	ADC Bit Dull	TFA (in')	Nozzles (#32')		
884.75	8	6.250	-----				

Drill Form - Drilling Parameters: 249.0 ftKB - 915.0 ftKB -							
WOB (1000lbf)	RPM (rpm)	Motor R...	Bit RPM ...	SPP (psi)	Q (flow) (gpm)	Rot. String Wt. (L...	PU Str Wt (100...
35	65		65			42	44
SO Str Wt (100...							
40							

Item Description	OD (in)	ID (in)	Grade	Mass/Len (lbs/ft)	Top Thread	Len (ft)	Jts
Drill Pipe	6 1/4			16.60		493.85	16
Drill Collar - Short	6 1/4	2.500				388.35	15
Bit Sub w/Float	6 1/4	2.750		84.00		1.55	1

Casing Strings					
Casing Description	Run Date	Depth Cut Pull (ft...)	Set Depth (ftKB)	OD (in)	ID (in)
Surface	11/10/2007 05:00	8.0	179.0	8 5/8	8.097

General Rig - Original Hole				
Wellbore Name	Parent Wellbore	Bottom Hole Legal Location	Hole Direction	Job
Original Hole		TX RRC DIST 8/SURV UL/ABS NA/BL L/SEC 5	VERTICAL	New Drilling, New Well, Drilling & Completions on 10/9/2007 06:00

Survey Data				
Date	Description	Measured Depth (ftKB)	Inclination (°)	Azimuth (°)
11/11/2007 8:00:00 AM	General Rig	261.00	2.25	0.00
11/11/2007 2:00:00 PM	General Rig	389.00	2.00	0.00
11/11/2007 9:00:00 PM	General Rig	620.00	2.00	0.00

Hole Direction: VERTICAL - Original Hole, 11/12/2007 5:59:...
(ftKB (MD)) Schematic - Actual

0

7

8

30

135

135

150

177

179

249

524

912

914

915

3,000

Original Hole, 12 1/4, 8-249

Surface, 8-179

Surface, 8 5/8, 8, 171.0

Original Hole, 7 7/8, 179-915

TD, 915, 11/11/2007



Yates Daily Drilling Report

Report Date: 11/13/2007

Report #: 25.0

UNIVERSITY DEVIL WOMAN L5 #1

Day # 4

Liner Size (in)	Start Date	End Date	Maximum Pressure (psi)	Vol/Str - 100% (bbl/s...)				
7 1/4	11/5/2007 00:00	10/30/2008 00:00		0.229				
Pump Checks								
Pump Number	Date	Depth (ftKB)	Slow Spd	Strokes (spm)	Pressure (psi)			
2	11/13/2007 00:15	1,347.0	No	33	300.0			
Safety Checks								
Date	Description	Type	Comment					
Mud Additive Amounts								
Description	Type	Consumed	Units					
Drill Strings: BHA #4, Slick								
Bit Number	Drill Bit	Depth In (ftKB)	Depth Out (ftKB)	Drilled (ft)	Drill Time (hrs)	BHA ROP (ft/...)		
2	Bit # 2 - 7 7/8, GX-30C, S133257	915.0	1,347.0	432.00	17.50	24.7		
String Length (ft)	String Wt (1000lbf)	OD (in)	IADC Bit Dull	TFA (in')	Nozzles (#/32")			
1,338.20	16	6.250	2-2---6-0-CL-D...					
Drill Form - Drilling Parameters 915.0 ftKB - 1,347.0 ftKB -								
WOB (1000lbf)	RPM (rpm)	Motor R...	Bit RPM ...	SPP (psi)	Q (flow) (g...)	Rot. String Wt. (...)	PU Str Wt (100...)	SO Str Wt (100...)
30	65		65	300.0		50	52	48
Item Description		OD (in)	ID (in)	Grade	Mass/Lon (lbs/ft)	Top Thread	Len (ft)	Jts
Drill Pipe		4 1/2	2.750		16.60		947.30	31
Drill Collar - Short		6 1/4	2.750				388.35	15
Bit Sub w/Float		6 1/4	2.750		84.00		1.55	1
Drill Strings: BHA #5, Slick								
Bit Number	Drill Bit	Depth In (ftKB)	Depth Out (ftKB)	Drilled (ft)	Drill Time (hrs)	BHA ROP (ft/...)		
3	Bit # 3 - 7 7/8, GX-30C, S133256	1,347.0			0.00			
String Length (ft)	String Wt (1000lbf)	OD (in)	IADC Bit Dull	TFA (in')	Nozzles (#/32")			
1,338.20	16	6.250						
Drill Form - Drilling Parameters 1,347.0 ftKB - <Depth End?> -								
WOB (1000lbf)	RPM (rpm)	Motor R...	Bit RPM ...	SPP (psi)	Q (flow) (g...)	Rot. String Wt. (...)	PU Str Wt (100...)	SO Str Wt (100...)
						50	52	48
Item Description		OD (in)	ID (in)	Grade	Mass/Lon (lbs/ft)	Top Thread	Len (ft)	Jts
Drill Pipe		4 1/2	2.750		16.60		947.30	31
Drill Collar - Short		6 1/4	2.750				388.35	15
Bit Sub w/Float		6 1/4	2.750		84.00		1.55	1
Casing Strings								
Casing Description	Run Date	Depth Cut Pull (ft...)	Set Depth (ftKB)	OD (in)	ID (in)			
Surface	11/10/2007 05:00	8.0	179.0	8 5/8	8.097			
General Rig - Original Hole								
Wellbore Name	Parent Wellbore	Bottom Hole Legal Location	Hole Direction	Job				
Original Hole		TX RRC DIST 8/SURV UL/ABS NAVBL L/SEC 5	VERTICAL	New Drilling, New Well, Drilling & Completions on 10/9/2007 06:00				
Survey Data								
Date	Description	Measured Depth (ftKB)	Inclination (°)	Azimuth (°)				
11/12/2007 7:00:00 AM	General Rig	894.00	1.75	0.00				
Date	Description	Measured Depth (ftKB)	Inclination (°)	Azimuth (°)				
11/13/2007 12:15:00 AM	General Rig	1,315.00	1.75	0.00				

Hole Direction: VERTICAL - Original Hole, 11/13/2007 5:59...
(ftKB (MD)) Schematic - Actual

Original Hole, 12 1/4, 8-179

Surface, 8-179

Surface, 8 5/8, 8, 171.0

Original Hole, 7 7/8, 179-1,347

TD, 1,347, 11/11/2007



Yates Daily Drilling Report

Report Date: 11/14/2007

Report #: 26.0

UNIVERSITY DEVIL WOMAN L5 #1

Day # 5

Bit Record					API#		County		State		Surface Legal Location									
Bit Number	3	Drill Bit	Bit # 3 - 7 7/8, GX-30C, 5133256	Dull Out	Nozzles (#32")	4222930253	HUDSPETH	TEXAS	TX RRC DIST 8/SURV UL/ABS NAVBL L/SEC 5											
Operator		TRAIL MOUNTAIN, INC.		Hole Direction		VERTICAL		N/S Dist	660.0	N/S Ref	FSL	E/W Dist	660.0	E/W Ref	FEL	Gr Elev (ft)	4,006.00	Orig KB Elev	4,014.00	
Jobs																				
Job Number		073960		Total AFE Amount		1,016,550.00		Tgt Depth (ft)		3,000.0		Target Formation		SILURIAN		Bottom Hole Legal Location				Drill Hrs...
																TX RRC DIST 8/SURV UL/ABS NAVBL L/SEC 5				83.00
Depth in (ft)		1,347.0		Depth Out (ft)		2,150.0		Depth Drill		803.00		Job Drill Hr		22.25		Avg ROP		36.1		
Daily Costs																				
Daily Cost Total		14,175.00		Cump Cost To Date		156,965.12		Daily Mud Cost				Mud Additive Cost To Date		700.00						
Day No.		5		Report End Date		11/14/2007 05:59		Formation at Report Time		MORROW		Lithology		70% SHALE 10% DOLO 10% LMS...		Present Operations				
																DRILLING				
Hole Direction: VERTICAL - Original Hole, 11/14/2007 5:59:14 (MD)																				
Schematic - Actual																				
Depth End (ft)		2,150.0		Depth Start (ft)		1,347.0		Depth Progress (ft)		803.00		Drilling Hours (hrs)		22.25		Average ROP (ft/hr)		36.1		
Remarks																				
DRILLING AHEAD W/ MUD PUMPS AND AIR COMPRESURES																				
Avg Background Gas (unit)		14.00		Max Background Gas (unit)		19.00		Avg Connection Gas (unit)		17.00		Max Connection Gas (unit)								
Avg Trip Gas (unit)				Max Trip Gas (unit)				Flare												
Mud Checks																				
Weight (lb/gal)		8.30		Chlorides (ppm)				Calcium (ppm)				Solids (%)				LCM				
Funnel Viscosity (cSt)		28		PV (cp)				YP (lb/100ft ²)				Gel 10 sec (lb/100ft ²)				Gel 10 min (lb/100ft ²)		pH		
Water Loss (mL/30min)				Filter Cake (32")				KCI (%)				Percent Oil (%)								
Comment																				
DRILLING WITH AIR MIST AND MUD PUMP																				
Time Log																				
Start Time		Dur (hrs)		End Time		Cum Dur (hrs)		Time Code		Depth Start (ft)		Depth End (ft)				Comment				
06:00		1.00		07:00		1.00		TRIP IN								FINISHED TIH, NO FILL				
07:00		10.00		17:00		11.00		DRILLING		1,347.0		1,727.0								
17:00		0.50		17:30		11.50		RIG UP / RIG DOWN EQUIPMENT								RIG UP COUNTER FOR PASON				
17:30		2.50		20:00		14.00		DRILLING		1,727.0		1,790.0								
20:00		1.00		21:00		15.00		RIG UP / RIG DOWN EQUIPMENT								RIG UP 2ND COMPRESER				
21:00		4.00		01:00		19.00		DRILLING		1,790.0		1,949.0								
01:00		0.25		01:15		19.25		DEVIATION SURVEY								WLS @1917-1 3/4"				
01:15		4.75		06:00		24.00		DRILLING		1,949.0		2,150.0								
Daily Costs																				
Cost Description		Cost Details		Cost		Vendor														
Drilling, Daywork				12,500.00		UNITED DRILLING														
Supervision & Overhead - Drilling				1,200.00		RGI INC.														
Supervision & Overhead - Drilling		Communication		125.00		PASON														
Supervision & Overhead - Drilling		Trailer Rental		75.00		RGI INC.														
Drilling Water, Fasline Rental		Water Hauling				JIM'S WATER SERVICE														
Tools & Equip. Rental, Etc. - Completions		Light Plant		110.00		LIGHT TOWER														
Mud Logging Unit, Sample Bags				65.00		RICKY ANDREWS														
Tools & Equip. Rntl Trkg. & Welding-Drilling		Safety Equipment		100.00		CALLAWAY SAFETY														
Daily Contacts																				
Job Contact		Company		Phone Mobile																
TIM BUSSELL, DRLG SUPERINTENDENT		YATES		575-365-5695																
Job Contact		Company		Phone Mobile																
JOE ORONA, DRILLING CONSULTANT		RIG		575-631-6924																
Job Contact		Company		Phone Mobile																
MIKE HILL, ENGINEER		YATES		575-365-8706																
Job Contact		Company		Phone Mobile																
DAVID PROSE, GEOLOGIST				817-937-3229																
Job Contact		Company		Phone Mobile																
ROB BULLOCK, LANDMAN		YATES																		
Job Contact		Company		Phone Mobile																
RIG FLOOR - 34, RIG PHONE		UNITED DRILLING COMPANY		575-910-0365																
Rigs																				
Rig Contractor		Rig Number		KB from GL (ft)		Rig Type														
UNITED DRILLING, INC.		34		8.00		Drilling - Single														
Mud Pumps - 1																				
No.		Start Date		Make		Model		Pwr (hp)		Rod Dia (in)										
1		11/5/2007 00:00		Upelrom				500.0		2										
Liner Size (in)		Start Date		End Date		Maximum Pressure (psi)		Vol/Str - 100% (bbl/s...)												
7 1/4		11/5/2007 00:00		10/28/2008 00:00				0.229												
Pump Checks																				
Pump Number		Date		Depth (ft)		Slow Spd		Strokes (spm)		Pressure (psi)										
1		11/14/2007 05:59		2,150.0		No		28		350.0										
Mud Pumps - 2																				
No.		Start Date		Make		Model		Pwr (hp)		Rod Dia (in)										
2		11/5/2007 00:00		Gardner Denver		FNX		500.0		2										
Liner Size (in)		Start Date		End Date		Maximum Pressure (psi)		Vol/Str - 100% (bbl/s...)												
7 1/4		11/5/2007 00:00		10/30/2008 00:00				0.229												

Original Hole, 12 1/4, 8-179

Surface, 8-179

Surface, 8 5/8, 8, 171.0

Original Hole, 7 7/8, 179-2,150

TD, 2,150, 11/11/2007



Yates Daily Drilling Report

Report Date: 11/14/2007

Report #: 26.0

UNIVERSITY DEVIL WOMAN L5 #1

Day # 5

Safety Checks									
Date	Description	Type	Comment						
Mud Additive Amounts									
Description	Type	Consumed Units							
Drill Strings: BHA #6, Slick									
Bit Number	Drill Bit	Depth In (ftKB)	Depth Out (ftKB)	Drilled (ft)	Drill Time (hrs)	BHA ROP (ft/hr)			
3	Bit # 3 - 7 7/8, GX-30C, S133256	1,347.0	2,150.0	803.00	22.25	36.1			
String Length (ft)	String Wt (1000lb)	OD (in)	ADC Bit Dull	TFA (in")	Nozzles (#32")				
2,131.00	29	6.250	-----						
Drill Form - Drilling Parameters 1,347.0 ftKB - 2,150.0 ftKB -									
WOB (1000lb)	RPM (rpm)	Motor R...	Bit RPM ...	SPP (psi)	G (ftow) (g...	Rot. String Wt. (...)	PU Str Wt (100...	SO Str Wt (100...	
35	65		65	350.0	168	56	58	54	
Hole Direction: VERTICAL - Original Hole, 11/14/2007 5:59... (ftKB (MD)) Schematic - Actual									
Item Description	OD (in)	ID (in)	Grade	Mass/Len (lbs/ft)	Top Thread	Len (ft)	Jts		
Drill Pipe	4 1/2	2.750		16.60		1,740.10	58		
Drill Collar - Short	6 1/4	2.500				388.35	15		
Bit Sub w/Float	6 1/4	2.750		84.00		1.55	1		
Casing Strings									
Casing Description	Run Date	Depth Cut Pnt (ft...)	Set Depth (ftKB)	OD (in)	ID (in)				
Surface	11/10/2007 05:00	8.0	179.0	8 5/8	8.097				
General Rig - Original Hole									
Wellbore Name	Parent Wellbore	Bottom Hole Legal Location	Hole Direction	Job					
Original Hole		TX RRC DIST 8/SURV UL/ABS NA/BL L/SEC 5	VERTICAL	New Drilling, New Well, Drilling & Completions on 10/9/2007 06:00					
Survey Data									
Date	Description	Measured Depth (ftKB)	Inclination (°)	Azimuth (°)					
11/14/2007 1:00:00 AM	General Rig	1,917.00	1.75	0.00					

Depth (ft)	Original Hole	Surface	TD
0			
7			
8		Surface, 8-179	
19			
135			
135			
150			
177			
179		Surface, 8 5/8, 8, 171.0	
1,759			
2,147			
2,149			
2,150	Original Hole, 7 7/8, 179-2,150		TD, 2,150, 11/11/2007
3,000			



Yates Daily Drilling Report

Report Date: 11/15/2007

UNIVERSITY DEVIL WOMAN L5 #1

Report #: 27.0

Day # 6

Bit Record					API RWI	County	State	Surface Legal Location					
Bit Number 3	Drill Bit Bit # 3 - 7 7/8, GX-30C, 5133256	Dull Out -----	Nozzles (#32")		4222930253	HUDSPETH	TEXAS	TX RRC DIST 8/SURV UL/ABS NA/BL L/SEC 5					
Operator TRAIL MOUNTAIN, INC.					Hole Direction VERTICAL		N/S Dist 660.0	N/S Ref FSL	E/W Dist 660.0	E/W Ref FEL	Gr Elev (ft) 4,006.00	Orig KB Elev 4,014.00	
Depth in (ftKB) 1,347.0					Depth Out (ft...) 2,685.0	Depth Drill... 1,338.00	Job Drill Hr... 37.00	Avg ROP... 36.2		Jobs			
A/E Number 073960					Total A/E Amount 1,016,550.00		Tgt Depth (ftKB) 3,000.0	Target Formation SILURIAN	Bottom Hole Legal Location TX RRC DIST 8/SURV UL/ABS NA/BL L/SEC 5		Drill Hrs... 97.75		
Daily Cost Total 24,120.00					Cum Cost To Date 181,085.12		Daily Mud Cost 3,145.00		Mud Additive Cost To Date 3,845.00				
Day No. 6					Report End Date 11/15/2007 05:59		Formation at Report Time PERCHA /SH/		Lithology LIMESTONE		Present Operations MIX LCM PILL		
Hole Direction: VERTICAL - Original Hole, 11/15/2007 5:59 HKB (MD)					Depth End (ftKB) 2,685.0		Depth Start (ftKB) 2,150.0		Depth Progress (ft) 535.00		Drilling Hours (hrs) 14.75	Average ROP (ft/hr) 36.3	
Remarks TD WELL @ 10:00 PM MST 11/14/07 (2685') MIXING & PUMPING LCM PILLS TO REGAIN CIRCULATION													
Avg Background Gas (unit)				Max Background Gas (unit)				Avg Connection Gas (unit)				Max Connection Gas (unit)	
Avg Trip Gas (unit)				Max Trip Gas (unit)				Flare					
Mud Checks													
Weight (lb/gal) 8.50		Chlorides (ppm) 9,000		Calcium (ppm) 800		Solids (%) 1.0		LCM					
Funnel Viscosity (s/qt) 28		PV (cp) YP (lb/100ft ³)		Gel 10 min (lb/100ft ³)		Gel 10 sec (lb/100ft ³)		pH 8.0					
Water Loss (mL/30min)				Filter Cake (32")				KCl (%)		Percent Oil (%)			
Comment													
Time Log													
Start Time	Dur (hrs)	End Time	Cum Dur (hrs)	Time Code	Depth Start (ftKB)	Depth End (ftKB)	Comment						
06:00	3.00	09:00	3.00	DRILLING	2,150.0	2,326.0							
09:00	1.00	10:00	4.00	RIG REPAIR	2,326.0		CHANGE OUT ROTATING HEAD / SERVICE RIG						
10:00	4.00	14:00	8.00	DRILLING	2,326.0	2,452.0							
14:00	0.25	14:15	8.25	SURVEY - WIRELINE	2,452.0		1 1/2" @ 2412'						
14:15	7.75	22:00	16.00	DRILLING	2,452.0	2,685.0	TD HOLE @ 10:00 PM MST 11/14/07						
22:00	1.00	23:00	17.00	CIRCULATE SAMPLES	2,685.0		CIRCULATE SAMPLES & CLEAN UP HOLE						
23:00	1.00	00:00	18.00	LAY DOWN DRILL STRING			LAYDOWN 10 JTS DRILL PIPE						
00:00	6.00	06:00	24.00	MIX LCM PILL			MIX & PUMP HI VIS LCM PILLS TO TRY TO REGAIN CIRCULATION						
Daily Costs													
Cost Description		Cost Details		Cost		Vendor							
Drilling, Daywork				17,500.00		UNITED DRILLING							
Drilling Mud & Additives				3,145.00		ARTESIA LUMBER COMPANY							
Drilling Water, Fasline Rental		Water Hauling		900.00		JIM'S WATER SERVICE							
Mud Logging Unit, Sample Bags				65.00		RICKY ANDREWS							
Tools&Equip. Rntl.Trkg.&Welding-Drilling		Safety Equipment		100.00		CALLAWAY SAFETY							
Tools & Equip. Rental, Etc.- Completions		Light Plant		110.00		LIGHT TOWER							
Supervision & Overhead - Drilling				1,200.00		RGI INC.							
Supervision & Overhead - Drilling		Trailer Rental		75.00		RGI INC.							
Supervision & Overhead - Drilling		Communication		125.00		PASON							
Bits, Tool & Supplies Purchase - Drilling				900.00		FARMERS COOP							
Daily Contacts													
Job Contact TIM BUSSELL, DRLG SUPERINTENDENT				Company YATES		Phone Mobile 575-365-5695							
Job Contact TERRY DOSHER, DRILLING CONSULTANT				Company RGI		Phone Mobile 575-399-8285							
Job Contact MIGUEL MADRID, TOOLPUSHER				Company UNITED DRILLING COMPANY		Phone Mobile 575-910-3078							
Job Contact RIG FLOOR - 34, RIG PHONE				Company UNITED DRILLING COMPANY		Phone Mobile 575-910-0365							
Job Contact MIKE HILL, ENGINEER				Company YATES		Phone Mobile 575-365-8706							
Job Contact DAVID PROSE, GEOLOGIST				Company		Phone Mobile 817-937-3229							
Job Contact ROB BULLOCK, LANDMAN				Company YATES		Phone Mobile							
Rigs													
Rig Contractor UNITED DRILLING, INC.		Rig Number 34		KB from GL (ft) 8.00		Rig Type Drilling - Single							
Mud Pumps - 1													
No.	Start Date	Make		Model		Pwr (hp)		Rod Dia (in)					
1	11/5/2007 00:00	Upelrom				500.0		2					

0

7

8

20

135

135

150

177

179

2,294

2,682

2,684

2,685

3,000

Original Hole, 12 1/4, 8-179

Surface, 8-179

Surface, 8 5/8, 8, 171.0

Original Hole, 7 7/8, 179-2,685

TD, 2,685, 11/11/2007



Yates Daily Drilling Report

Report Date: 11/15/2007

UNIVERSITY DEVIL WOMAN L5 #1

Report #: 27.0

Day # 6

Liner Size (in)	7 1/4	Start Date	11/5/2007 00:00	End Date	10/28/2008 00:00	Maximum Pressure (psi)	Vol/Stir - 100% (bbl/s...)	0.229
Pump Checks								
Pump Number	1	Date	11/15/2007 05:59	Depth (ftKB)	2,685.0	Slow Spd	No	Pressure (psi)
Pump Number	1	Date	11/15/2007 05:59	Depth (ftKB)	2,685.0	Slow Spd	Yes	Pressure (psi)
Mud Pumps - 2								
No.	2	Start Date	11/5/2007 00:00	Make	Gardner Denver	Model	FNX	Pwr (hp)
Liner Size (in)	7 1/4	Start Date	11/5/2007 00:00	End Date	10/30/2008 00:00	Maximum Pressure (psi)	Vol/Stir - 100% (bbl/s...)	0.229
Safety Checks								
Date	Description			Type	Comment			
Hole Direction: VERTICAL - Original Hole, 11/15/2007 5:59... IKB (MD) Schematic - Actual								
Mud Additive Amounts								
Description	Type			Consumed	Units			
Fresh Gel				50.0	sacks			
Paper	LCM			75.0	sacks			
Fiber Seal				75.0	sacks			
Drill Strings: BHA #7, Slick								
Bit Number	3	Drill Bit	Bit # 3 - 7 7/8, GX-30C, 5133256	Depth In (ftKB)	2,150.0	Depth Out (ftKB)	2,685.0	Drilled (ft)
String Length (ft)	2,665.00	String Wt (1000lb)	38	OD (in)	6.250	IADC Bit Dull	-----	TFA (in ²)
Drill Form - Drilling Parameters 2,150.0 ftKB - 2,685.0 ftKB -								
WOB (1000lb)	30	RPM (rpm)	65	Motor R...	65	SPP (psi)	350.0	Q (flow) (g...)
						336	Rot. String Wt. (...)	79
						PU Str Wt (100...)		82
						SO Str Wt (100...)		77
Item Description		OD (in)	ID (in)	Grade	Mass/Len (lbs/ft)	Top Thread	Len (ft)	Jis
Drill Pipe		4 1/2	2.750		16.60		2,274.10	72
Drill Collar - Short		6 1/4	2.500				388.35	15
Bit Sub w/Float		6 1/4	2.750		84.00		1.55	1
Casing Strings								
Casing Description	Run Date		Depth Cut Pull (ft...)		Set Depth (ftKB)	OD (in)	ID (in)	
Surface	11/10/2007 05:00		8.0		179.0	8 5/8	8.097	
General Rig - Original Hole								
Wellbore Name	Parent Wellbore	Bottom Hole Legat Location		Hole Direction	Job			
Original Hole		TX RRC DIST 8/SURV UL/ABS NAVBL L/SEC 5		VERTICAL	New Drilling, New Well, Drilling & Completions on 10/9/2007 06:00			
Survey Data								
Date	Description		Measured Depth (ftKB)		Inclination (°)	Azimuth (°)		
11/14/2007 2:00:00 PM	General Rig		2,410.00		1.50	0.00		

0

7

8

20

135

135

150

177

179

2,294

2,682

2,684

2,685

3,000



Yates Daily Drilling Report

Report Date: 11/16/2007

UNIVERSITY DEVIL WOMAN L5 #1

Report #: 28.0

Day # 7

Bit Record				API/WHI	County	State	Surface Legal Location					
Bit Number	Drill Bit	Outlet	Nozzles (#/32")	4222930253	HUDSPETH	TEXAS	TX RRC DIST 8/SURV UL/ABS NA/BL L/SEC 5					
Depth In (ftKB)	Depth Out (ftL)	Depth Drill...	Job Drill Hrs...	Avg ROP...	Operator	Hole Direction	N/S Dist...	N/S Ref	E/W Dist...	E/W Ref	Gr Elev (ft)	Orig KB Elev...
					TRAIL MOUNTAIN, INC.	VERTICAL	660.0	FSL	660.0	FEL	4,006.00	4,014.00
Jobs												
APE Number		Total APE Amount		Tgt Depth (ftKB)		Target Formation		Bottom Hole Legal Location				Drill Hrs...
073960		1,016,550.00		3,000.0		SILURIAN		TX RRC DIST 8/SURV UL/ABS NA/BL L/SEC 5				97.75
Daily Cost Total			Cum Cost To Date			Daily Mud Cost			Mud Additive Cost To Date			
32,332.00			213,417.12			11,602.00			15,447.00			
Day No.		Report End Date		Formation at Report Time		Lithology		Present Operations				
7		11/16/2007 05:59		PERCHA /SH/		LIMESTONE		LOGGING				
Hole Direction: VERTICAL - Original Hole, 11/16/2007 5:59:05												
ftKB (MD) Schematic - Actual												
Depth End (ftKB)		Depth Start (ftKB)		Depth Progress (ft)		Drilling Hours (hrs)		Average ROP (ft/hr)				
2,685.0		2,685.0		0.00								
Remarks												
Avg Background Gas (unit)			Max Background Gas (unit)			Avg Connection Gas (unit)			Max Connection Gas (unit)			
Avg Trip Gas (unit)			Max Trip Gas (unit)			Flare						
Mud Checks												
Weight (lb/gal)		Chlorides (ppm)		Calcium (ppm)		Solids (%)		LCM				
8.50		9,000		800		1.0						
Funnel Viscosity (sq/ft)		PV (cp)		YP (lb/100ft²)		Gel 10 sec (lb/100ft²)		Gel 10 min (lb/100ft²)		pH		
45		9.0		15,000		7,000		13,000		8.0		
Water Loss (ml/30min)		Filter Cake (#/32")		KCl (%)		Percent Oil (%)						
15.0		1										
Comment												
Time Log												
Start Time	Dur (hrs)	End Time	Cum Dur (hrs)	Time Code	Depth Start (ftKB)	Depth End (ftKB)	Comment					
06:00	3.00	09:00	3.00	MIX LCM PILL			MIXING LCM PILLS W/ 10% RETURNS					
09:00	3.00	12:00	6.00	MIX LCM PILL			MIXING LCM PILLS W/ 40% RETURNS					
12:00	5.50	17:30	11.50	MIX LCM PILL			MIXING LCM PILLS W/ 65% RETURNS					
17:30	0.50	18:00	12.00	TRIP IN			RUN BACK TO BOTTOM W/ DRILL PIPE / LOSING 40 BPH					
18:00	5.50	23:30	17.50	MIX LCM PILL			MIXING LCM PILLS W/ 65% RETURNS / CONDITION MUD F/ LOGS / LOSING 40 BPH					
23:30	3.50	03:00	21.00	LAY DOWN DRILL STRING			LAYDOWN DP & COLLARS					
03:00	3.00	06:00	24.00	LOGGING			RIG UP LOGGERS / HOLD SAFETY MEETING W/ LOGGERS / RUN IN HOLE W/ LOGS					
Daily Costs												
Cost Description		Cost Details		Cost		Vendor						
Drilling, Daywork				17,500.00		UNITED DRILLING						
Drilling Mud & Additives				11,602.00		ARTESIA LUMBER COMPANY						
Drilling Water, Fasline Rental Tools&Equip.		Water Hauling		100.00		JIM'S WATER SERVICE						
Rnfl.Trkg.&Welding-Drilling		Safety Equipment				CALLAWAY SAFETY						
Tools & Equip. Rental, Etc.- Completions		Light Plant		110.00		LIGHT TOWER						
Supervision & Overhead - Drilling				1,200.00		RGI INC.						
Supervision & Overhead - Drilling		Trailer Rental		75.00		RGI INC.						
Supervision & Overhead - Drilling		Communication		125.00		PASON						
Cementing - Production Casing				920.00		CHARLIE'S ROUSTABOUT SERVICE						
Tools&Equip. Rnfl.Trkg.&Welding-Drilling		Trans. Of Rental Tools		700.00		TRIUMPH						
Daily Contacts												
Job Contact		Company		Phone Mobile								
TIM BUSSELL, DRLG SUPERINTENDENT		YATES		575-365-5695								
Job Contact		Company		Phone Mobile								
TERRY DOSHER, DRILLING CONSULTANT		RGI		575-399-8285								
Job Contact		Company		Phone Mobile								
MIGUEL MADRID, TOOLPUSHER		UNITED DRILLING COMPANY		575-910-3078								
Job Contact		Company		Phone Mobile								
RIG FLOOR - 34, RIG PHONE		UNITED DRILLING COMPANY		575-910-0365								
Job Contact		Company		Phone Mobile								
MIKE HILL, ENGINEER		YATES		575-365-8706								
Job Contact		Company		Phone Mobile								
DAVID PROSE, GEOLOGIST		YATES		817-937-3229								
Job Contact		Company		Phone Mobile								
ROB BULLOCK, LANDMAN		YATES										
Rigs												
Rig Contractor		Rig Number		KB from GL (ft)		Rig Type						
UNITED DRILLING, INC.		34		8.00		Drilling - Single						

0

7

8

135

135

150

177

179

2,685

3,000

Original Hole, 12 1/4, 8-179

Original Hole, 7 7/8, 179-2,685

TD, 2,685, 11/11/2007

Surface, 8-179

Surface, 8 5/8, 8, 171.0



Yates Daily Drilling Report

Report Date: 11/16/2007

UNIVERSITY DEVIL WOMAN L5 #1

Report #: 28.0

Day # 7

Mud Pumps - 1	
No.	Start Date
1	11/5/2007 00:00
Make Upetrom	
Model	
Pwr (hp)	500.0
Rod Dia (in)	2
Liner Size (in)	7 1/4
Start Date	11/5/2007 00:00
End Date	10/28/2008 00:00
Maximum Pressure (psi)	
Vol/Str - 100% (bbl/s)	0.229
Pump Checks	
Pump Number	Date
1	11/16/2007 05:59
Depth (ftKB)	2,685.0
Slow Spd	No
Strokes (spm)	60
Pressure (psi)	500.0
Pump Number	Date
1	11/16/2007 05:59
Depth (ftKB)	2,685.0
Slow Spd	Yes
Strokes (spm)	30
Pressure (psi)	225.0
Mud Pumps - 2	
No.	Start Date
2	11/5/2007 00:00
Make Gardner Denver	
Model FNX	
Pwr (hp)	
Rod Dia (in)	2
Liner Size (in)	7 1/4
Start Date	11/5/2007 00:00
End Date	10/30/2008 00:00
Maximum Pressure (psi)	
Vol/Str - 100% (bbl/s)	0.229
Safety Checks	
Date	Description
11/16/2007 05:00	Safety Meeting
Type	SAFETY MEETING W/ LOGGERS
Mud Additive Amounts	
Description	Type
K-SEAL	Consumed 10.0 SACKS
Fiber Seal	Consumed 25.0 sacks
Paper	Consumed 27.0 sacks
Mica	Consumed 35.0 sacks
Salt Water Gel	Consumed 40.0 sacks
PHENO-SEAL	Consumed 43.0 SACKS
Yellow Starch	Consumed 50.0 sacks
Fresh Gel	Consumed 64.0 sacks
Casing Strings	
Casing Description	Run Date
Surface	11/10/2007 05:00
Depth Cut Pull (ft...)	8.0
Set Depth (ftKB)	179.0
OD (in)	8 5/8
ID (in)	8.097
General Rig - Original Hole	
Wellbore Name	Parent Wellbore
Original Hole	TX RRC DIST 8/SURV UL/ABS NA/BL L/SEC 5
Hole Direction	Job
VERTICAL	New Drilling, New Well, Drilling & Completions on 10/9/2007 06:00
Survey Data	
Date	Description
	General Rig
Measured Depth (ftKB)	Inclination (°)
Azimuth (°)	

Hole Direction: VERTICAL - Original Hole, 11/16/2007 5:59...
ftKB (MD) Schematic - Actual

0

7

8

135

135

150

177

179

2,685

3,000

Surface, 8-179

Surface, 8 5/8, 8, 171.0

Original Hole, 12 1/4, 8-179

Original Hole, 7 7/8, 179-2,685

TD, 2,685, 11/11/2007



Yates Daily Drilling Report

Report Date: 11/17/2007

UNIVERSITY DEVIL WOMAN L5 #1

Report #: 29.0

Day # 8

Bit Record					API#	County	State	Surface Legal Location				
Bit Number	Dial Bit	Dial Out	Nozzles (#/32")		4222930253	HUDSPETH	TEXAS	TX RRC DIST 8/SURV UL/ABS NA/BL L/SEC 5				
Depth In (ftKB)	Depth Out (ft...)	Depth Drill...	Job Drill Hr...	Avg ROP...	Operator	Hole Direction	N/S Dist	N/S Ref	E/W Dist	E/W Ref	Gr Elev (ft)	Orig KB Elev
					TRAIL MOUNTAIN, INC.	VERTICAL	660.0	FSL	660.0	FEL	4,006.00	4,014.00
Jobs												
AFE Number	Total AFE Amount		Tgt Depth (ftKB)		Target Formation		Bottom Hole Legal Location			Drill Hrs...		
073960	1,016,550.00		3,000.0		SILURIAN		TX RRC DIST 8/SURV UL/ABS NA/BL L/SEC 5			131.75		
Daily Cost Total			Cum Cost To Date			Daily Mud Cost			Mud Additive Cost To Date			
68,262.00			271,679.12						15,447.00			
Day No.	Report End Date		Formation at Report Time		Lithology			Present Operations				
8	11/17/2007 05:59		PERCHA /SH/		LIMESTONE			TRIP IN				
Hole Direction: VERTICAL - Original Hole, 11/17/2007 5:59:05:59 Schematic - Actual												
Depth End (ftKB)		Depth Start (ftKB)		Depth Progress (ft)		Drilling Hours (hrs)		Average ROP (ft/hr)				
2,685.0		2,685.0		0.00								
Remarks												
LOGGED & CUT CORES / TROUBLE CUTTING SOME CORES												
Avg Background Gas (ft/min)			Max Background Gas (ft/min)			Avg Connection Gas (ft/min)			Max Connection Gas (ft/min)			
Avg Trip Gas (ft/min)			Max Trip Gas (ft/min)			Flow						
Mud Checks												
Weight (lb/gal)		Chlorides (ppm)		Calcium (ppm)		Solids (%)		LCM				
Funnel Viscosity (st/qt)		PV (cp)		YP (lb/100ft ²)		Gel 10 sec (lb/100ft ²)		Gel 10 min (lb/100ft ²)		pH		
Water Loss (ml/30min)		Filter Cake (32")		KCl (%)		Percent Oil (%)						
Comment												
Time Log												
Start Time	Dur (hrs)	End Time	Cum Dur (hrs)	Time Code	Depth Start (ftKB)	Depth End (ftKB)	Comment					
06:00	23.00	05:00	23.00	LOGGING			LOGS ON BOTTOM 6:30 AM MST / LOGGERS DEPTH @ 2685' / 3 RUNS - 1 MISS RUN / CUT 22 CORES - TROUBLE CUTTING CORES					
05:00	1.00	06:00	24.00	TRIP IN			PU BIT & PREP TO RIH TO DRILL 300 MORE FEET					
Daily Costs												
Cost Description		Cost Details		Cost		Vendor						
Drilling, Daywork				12,500.00		UNITED DRILLING						
Drilling Mud & Additives						ARTESIA LUMBER COMPANY						
Drilling Water, Fasline Rental		Water Hauling		4,152.00		JIM'S WATER SERVICE						
Tools&Equip. Rntl.Trkg.&Welding-Drilling		Safety Equipment		100.00		CALLAWAY SAFETY						
Tools & Equip. Rental, Etc.- Completions		Light Plant		110.00		LIGHT TOWER						
Supervision & Overhead - Drilling				1,200.00		RGI INC.						
Supervision & Overhead - Drilling		Trailer Rental		75.00		RGI INC.						
Supervision & Overhead - Drilling		Communication		125.00		PASON						
Electric Logs & Tape Copies				41,800.00		SCHLUMBERGER WIRELINE & TESTING						
Bits, Tool & Supplies Purchase - Drilling				8,200.00		HUGHES TOOL						
Daily Contacts												
Job Contact		Company				Phone Mobile						
TIM BUSSELL, DRLG SUPERINTENDENT		YATES				575-365-5695						
Job Contact		Company				Phone Mobile						
TERRY DOSHER, DRILLING CONSULTANT		RGI				575-399-8285						
Job Contact		Company				Phone Mobile						
MIGUEL MADRID, TOOLPUSHER		UNITED DRILLING COMPANY				575-910-3078						
Job Contact		Company				Phone Mobile						
RIG FLOOR - 34, RIG PHONE		UNITED DRILLING COMPANY				575-910-0365						
Job Contact		Company				Phone Mobile						
MIKE HILL, ENGINEER		YATES				575-365-8706						
Job Contact		Company				Phone Mobile						
DAVID PROSE, GEOLOGIST						817-937-3229						
Job Contact		Company				Phone Mobile						
ROB BULLOCK, LANDMAN		YATES										
Rigs												
Rig Contractor		Rig Number		KB from GL (ft)		Rig Type						
UNITED DRILLING, INC.		34		8.00		Drilling - Single						
Mud Pumps - 1												
No.	Start Date	Make	Model	Pwr (hp)	Rod Dia (in)							
1	11/5/2007 00:00	Upetrom		500.0	2							
Liner Size (in)	Start Date	End Date	Maximum Pressure (psi)	Vol/Str - 100% (bbls...)								
7 1/4	11/5/2007 00:00	10/28/2008 00:00		0.229								
Mud Pumps - 2												
No.	Start Date	Make	Model	Pwr (hp)	Rod Dia (in)							
2	11/5/2007 00:00	Gardner Denver	FNX	500.0	2							
Liner Size (in)	Start Date	End Date	Maximum Pressure (psi)	Vol/Str - 100% (bbls...)								
7 1/4	11/5/2007 00:00	10/30/2008 00:00		0.229								

0

7

8

135

135

150

177

179

3,000

3,516

Surface, 8-179

Surface, 8 5/8, 8, 171.0

Original Hole, 7 7/8, 179-3,516

TD, 3,516, 11/11/2007



Yates Daily Drilling Report

Report Date: 11/17/2007

UNIVERSITY DEVIL WOMAN L5 #1

Report #: 29.0

Day # 8

Safety Checks

Date	Description	Type	Comment
------	-------------	------	---------

Mud Additive Amounts

Description	Type	Consumed	Units
-------------	------	----------	-------

Casing Strings

Casing Description	Run Date	Depth Cut Pull (ft.)	Set Depth (ft.)	OD (in)	ID (in)
--------------------	----------	----------------------	-----------------	---------	---------

Surface	11/10/2007 05:00	8.0	179.0	8 5/8	8.097
---------	------------------	-----	-------	-------	-------

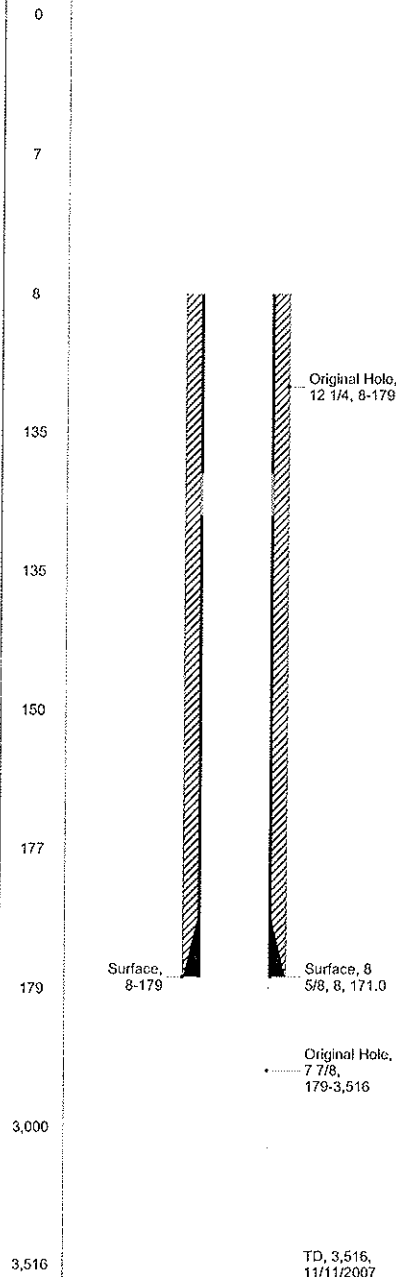
General Rig - Original Hole

Wellbore Name	Parent Wellbore	Bottom Hole Legal Location	Hole Direction	Job
Original Hole		TX RRC DIST 8/SURV UL/ABS NA/BL L/SEC 5	VERTICAL	New Drilling, New Well, Drilling & Completions on 10/9/2007 06:00

Hole Direction: VERTICAL - Original Hole, 11/17/2007 5:59...
RKB (MD) Schematic - Actual

Survey Data

Date	Description	Measured Depth (RKB)	Inclination (°)	Azimuth (°)
	General Rig			





Yates Daily Drilling Report

Report Date: 11/18/2007

UNIVERSITY DEVIL WOMAN L5 #1

Report #: 30.0

Day # 9

Bit Record					API/WVI		County		State		Surface Legal Location	
Bit Number	Drill Bit	Cull Out	Nozzles (#/32")									
4	Bit # 4 - 7 7/8, GX-30C, 5133258		16/16/16		4222930253	HUDSPETH	TEXAS	TX RRC DIST 8/SURV UL/ABS NA/BL L/SEC 5				
Operator					Hole Direction		NIS Dist	NIS Ref	EW Dist	EW Ref	Gr Elev (ft)	
TRAIL MOUNTAIN, INC.					VERTICAL		660.0	FSL	660.0	FEL	4,006.00	
Original Elev					4,014.00							
Depth In (ft)					Depth Out (ft)		Depth Drill (ft)		Job Drill Hr		Avg ROP	
2,685.0					3,113.0		831.00		34.00		24.4	
Jobs					Total AFE Amount		Tgt Depth (ft)		Target Formation		Bottom Hole Legal Location	
073960					1,016,550.00		3,000.0		SILURIAN		TX RRC DIST 8/SURV UL/ABS NA/BL L/SEC 5	
Daily Cost Total					Cum Cost To Date		Daily Mud Cost		Mud Additive Cost To Date			
26,510.00					298,289.12				15,447.00			
Day No.					Report End Date		Formation at Report Time		Lithology		Present Operations	
9					11/18/2007 05:59		BARNETT /SH/		80% SHALE 20% LIMESTONE		DRILLING	
Hole Direction: VERTICAL - Original Hole, 11/18/2007 5:59:05 AM					Depth End (ft)		Depth Start (ft)		Depth Progress (ft)		Drilling Hours (hrs)	
HKB (MD)					3,113.0		2,685.0		428.00		18.00	
Schematic - Actual					Average ROP (ft/hr)		23.8					
Remarks												
Avg Background Gas (unit)					Max Background Gas (unit)		Avg Connection Gas (unit)		Max Connection Gas (unit)			
Avg Trip Gas (unit)					Max Trip Gas (unit)		Flare					
Mud Checks												
Weight (lb/gal)					Chlorides (ppm)		Calcium (ppm)		Solids (%)		LCM	
8.80									1.0			
Finnel Viscosity (cp)					PV (cp)		YP (lb/100ft ²)		Gel 10 sec (lb/100ft ²)		gel 8.5	
33												
Water Loss (ml/30min)					Filter Cake (32")		KCl (%)		Percent Oil (%)			
15.0												
Comment												
Time Log												
Start Time					Dur (hrs)		End Time		Cum Dur (hrs)		Time Code	
06:00					5.00		11:00		5.00		TRIP IN	
11:00					0.50		11:30		5.50		WASH TO BOTTOM	
11:30					6.00		17:30		11.50		DRILLING	
17:30					0.50		18:00		12.00		UNDEFINED STATUS	
18:00					12.00		06:00		24.00		DRILLING	
Daily Costs												
Cost Description					Cost Details		Cost		Vendor			
Drilling, Daywork							12,500.00		UNITED DRILLING			
Drilling, Power & Fuel							7,500.00		THOMAS PETROLEUM			
Drilling Mud & Additives									ARTESIA LUMBER COMPANY			
Drilling Water, Fasline Rental					Water Hauling		5,000.00		JIM'S WATER SERVICE			
Tools&Equip. Rntl.Trkg.&Welding-Drilling					Safety Equipment		100.00		CALLAWAY SAFETY			
Tools & Equip. Rental, Etc.- Completions					Light Plant		110.00		LIGHT TOWER			
Supervision & Overhead - Drilling							1,200.00		RGI INC.			
Supervision & Overhead - Drilling					Trailer Rental		75.00		RGI INC.			
Supervision & Overhead - Drilling					Communication		125.00		PASON			
Daily Contacts												
Job Contact					Company		Phone Mobile					
TIM BUSSELL, DRLG SUPERINTENDENT					YATES		575-365-5695					
Job Contact					Company		Phone Mobile					
TERRY DOSHER, DRILLING CONSULTANT					RGI		575-399-8285					
Job Contact					Company		Phone Mobile					
MIGUEL MADRID, TOOLPUSHER					UNITED DRILLING COMPANY		575-910-3078					
Job Contact					Company		Phone Mobile					
RIG FLOOR - 34, RIG PHONE					UNITED DRILLING COMPANY		575-910-0365					
Job Contact					Company		Phone Mobile					
MIKE HILL, ENGINEER					YATES		575-365-8706					
Job Contact					Company		Phone Mobile					
DAVID PROSE, GEOLOGIST					YATES		817-937-3229					
Job Contact					Company		Phone Mobile					
ROB BULLOCK, LANDMAN					YATES							
Rigs												
Rig Contractor					Rig Number		KB from GL (ft)		Rig Type			
UNITED DRILLING, INC.					34		8.00		Drilling - Single			
Mud Pumps - 1												
No.					Start Date		Make		Model		Pwr (hp)	
1					11/5/2007 00:00		Upetrom				500.0	
Liner Size (in)					Start Date		End Date		Maximum Pressure (psi)		Vol/Str - 100% (bbl/s)	
7 1/4					11/5/2007 00:00		10/28/2008 00:00				0.229	
Pump Checks												
Pump Number					Date		Depth (ft)		Slow Spd		Strokes (epn)	
1					11/18/2007 05:59		3,113.0		No		62	
Pressure (psi)					940.0							
Mud Pumps - 2												
No.					Start Date		Make		Model		Pwr (hp)	
2					11/5/2007 00:00		Gardner Denver		FNX		500.0	
Liner Size (in)					Start Date		End Date		Maximum Pressure (psi)		Vol/Str - 100% (bbl/s)	
7 1/4					11/5/2007 00:00		10/30/2008 00:00				0.229	

0

7

8

40

135

135

150

177

179

2,593

3,000

3,111

3,112

3,113

3,516

Original Hole, 12 1/4, 8-179

Surface, 8-179

Original Hole, 5/8, 8, 171.0

Original Hole, 7 7/8, 179-3,516

TD, 3,516, 11/11/2007



Yates Daily Drilling Report

Report Date: 11/19/2007

UNIVERSITY DEVIL WOMAN L5 #1

Report #: 31.0

Day # 10

Bit Record					API/ISWI		County		State		Surface Legal Location				
Bit Number	Drill Bit	Dull Out	Nozzles (/32")		4222930253		HUDSPETH		TEXAS	TX RRC DIST 8/SURV UL/ABS NA/BL L/SEC 5					
4	Bit # 4 - 7 7/8, GX-30C, 5133258	-----	16/16/16		Operator	Hole Direction		N/S Dist	N/S Ref	E/W Dist	E/W Ref	Gr Elev (ft)	Orig KB Elev		
					TRAIL MOUNTAIN, INC.	VERTICAL		660.0	FSL	660.0	FEL	4,006.00	4,014.00		
Depth In (ftKB)					Total AFE Amount		Tgt Depth (ftKB)		Target Formation		Bottom Hole Legal Location			Drill Hrs...	
2,685.0					1,016,550.00		3,000.0		SILURIAN		TX RRC DIST 8/SURV UL/ABS NA/BL L/SEC 5			131.75	
Depth Out (ft...)					Cum Cost To Date		Daily Mud Cost				Mud Additive Cost To Date				
3,516.0					14,110.00		312,399.12				15,447.00				
Depth Drill...					Report End Date		Formation at Report Time		Lithology		Present Operations				
831.00					11/19/2007 05:59		DEVONIAN		60%LIME30%CHERT10%SHALE		CIRCULATE				
Job Drill Hr...					Depth End (ftKB)		Depth Start (ftKB)		Depth Progress (ft)		Drilling Hours (hrs)		Average ROP (ft/hr)		
34.00					3,516.0		3,113.0		403.00		16.00		25.2		
Avg ROP...					Remarks										
24.4					GAS SHOWS F/3345-3431 MAX 431 UNITS										
					Avg Background Gas (unit)		Max Background Gas (unit)		Avg Connection Gas (unit)		Max Connection Gas (unit)				
					71.00		431.00		30.00						
					Avg Trip Gas (unit)		Max Trip Gas (unit)		Rate						
					Mud Checks										
					Weight (lb/gal)		Chlorides (ppm)		Calcium (ppm)		Solids (%)		LCM		
					8.90										
					Funnel Viscosity (cSt)		PV (cp)		YP (lb/100lb)		Gel 10 sec (lb/100lb)		Gel 10 min (lb/100lb)		
					36								pH		
					Water Loss (mL/30min)		Filter Cake (32")		KCl (%)		Percent Oil (%)		9.0		
					10.0										
					Comment										
					Time Log										
					Start Time		Our (hrs)	End Time	Cum Our (hrs)	Time Code	Depth Start (ftKB)	Depth End (ftKB)	Comment		
					06:00		1.00	07:00	1.00	DRILLING	3,113.0	3,145.0			
					07:00		0.50	07:30	1.50	DEVIATION SURVEY	3,145.0		WLS @ 3103-MISSRUN		
					07:30		0.50	08:00	2.00	SERVICE RIG					
					08:00		0.50	08:30	2.50	DRILLING	3,145.0	3,176.0			
					08:30		0.50	09:00	3.00	DEVIATION SURVEY	3,176.0		WLS@3134-1 3/4"		
					09:00		14.50	23:30	17.50	DRILLING	3,176.0	3,516.0	TD WELL @ 3516		
					23:30		1.50	01:00	19.00	CIRCULATE	3,516.0		SWEEP HOLE AND CIRCULATED		
					01:00		1.75	02:45	20.75	SHORT TRIP OUT			SHORT TRIP OUT TO 2700' (NO DRAG) WAITED 30 MINUTES.		
					02:45		1.25	04:00	22.00	SHORT TRIP IN			TRIP IN HOLE NO TIGHT SPOTS AND NO FILL		
					04:00		2.00	06:00	24.00	CIRCULATE					
					Daily Costs										
					Cost Description		Cost Details		Cost		Vendor				
					Drilling, Daywork				12,500.00		UNITED DRILLING				
					Drilling, Power & Fuel						THOMAS PETROLEUM				
					Drilling Mud & Additives						ARTESIA LUMBER COMPANY				
					Drilling Water, Fastlane Rental		Water Hauling				JIM'S WATER SERVICE				
					Tools&Equip.		Safety Equipment		100.00		CALLAWAY SAFETY				
					Rntl.Trkg.&Welding-Drilling										
					Tools & Equip. Rental, Etc.- Completions		Light Plant		110.00		LIGHT TOWER				
					Supervision & Overhead - Drilling				1,200.00		RGI INC.				
					Supervision & Overhead - Drilling		Trailer Rental		75.00		RGI INC.				
					Supervision & Overhead - Drilling		Communication		125.00		PASON				
					Daily Contacts										
					Job Contact		Company		Phone Mobile						
					TIM BUSSELL, DRLG SUPERINTENDENT		YATES		575-365-5695						
					Job Contact		Company		Phone Mobile						
					JOE ORONA, DRILLING CONSULTANT		RIG		575-631-6924						
					Job Contact		Company		Phone Mobile						
					MIGUEL MADRID, TOOLPUSHER		UNITED DRILLING COMPANY		575-910-3078						
					Job Contact		Company		Phone Mobile						
					RIG FLOOR - 34, RIG PHONE		UNITED DRILLING COMPANY		575-910-0365						
					Job Contact		Company		Phone Mobile						
					MIKE HILL, ENGINEER		YATES		575-365-8706						
					Job Contact		Company		Phone Mobile						
					DAVID PROSE, GEOLOGIST		YATES		817-937-3229						
					Job Contact		Company		Phone Mobile						
					ROB BULLOCK, LANDMAN		YATES								
					Rigs										
					Rig Contractor		Rig Number		KB from GL (ft)		Rig Type				
					UNITED DRILLING, INC.		34		8.00		Drilling - Single				
					Mud Pumps - 1										
					No.		Start Date		Make		Model				
					1		11/5/2007 00:00		Upetrom		Pwr (hp)				
					Liner Size (in)		Start Date		End Date		Maximum Pressure (psi)		Void/St - 100% (bbl/s)		
					7 1/4		11/5/2007 00:00		10/28/2008 00:00				0.229		

0

7

8

15

135

135

150

177

179

2,995

3,000

3,513

3,515

3,516

Original Hole, 12 1/4, 8-179

Surface, 8-179

Surface, 8 5/8, 8, 171.0

Original Hole, 7 7/8, 179-3,516

TD, 3,516, 11/11/2007



Yates Daily Drilling Report

Report Date: 11/19/2007

UNIVERSITY DEVIL WOMAN L5 #1

Report #: 31.0

Day # 10

Pump Checks	
Pump Number	Date
1	11/19/2007 05:59
Depth (ftKB)	Slow Spd No
3,516.0	62
Strokes (spm)	Pressure (psi)
	950.0

Mud Pumps - 2	
No.	Start Date
2	11/5/2007 00:00
Make	Model
Gardner Denver	FNX
Pwr (hp)	Rod Dia (in)
500.0	2
Liner Size (in)	Start Date
7 1/4	11/5/2007 00:00
End Date	Maximum Pressure (psi)
10/30/2008 00:00	
Vol/Stk - 100% (bbl/s...)	
0.229	

Safety Checks	
Date	Description
Type	Comment

Mud Additive Amounts	
Description	Type
Yellow Starch	
Consumed	Units
16.0	sacks
Fresh Gel	
Consumed	Units
91.0	sacks

Drill Strings: BHA #9, Slick	
Bit Number	Drill Bit
4	REG 4 - 7 7/8 GX 302 5133758
Depth In (ftKB)	Depth Out (ftKB)
3,113.0	3,516.0
Drilled (ft)	Drill Time (hrs)
403.00	16.00
BHA ROP (ft/hr)	
25.2	
String Length (ft)	String Wt (1000lb)
3,500.63	49
OD (in)	IADC Bit Dull
6.250	-----
YFA (in)	Nozzles (32")
	16/16/16

Drill Form - Drilling Parameters 3,113.0 ftKB - 3,516.0 ftKB -	
WOB (1000lb)	RPM (rpm)
40	
SPP (psi)	Q (flow) (gpm)
950.0	65
Rot. String Wt. (lb)	PU Str Wt (100...)
96	100
SO Str Wt (100...)	
92	

Item Description	OD (in)	ID (in)	Grade	Mass Len (lbs/ft)	Top Thread	Len (ft)	Jts
Drill Pipe	4 1/2	2.750		16.60		2,980.00	95
Drill Collar - Short	6 1/4	2.500				518.08	20
Bit Sub	6 1/4	2.500				1.55	1

Casing Strings	
Casing Description	Run Date
Surface	11/10/2007 05:00
Depth Cut Pull (ft...)	Set Depth (ftKB)
8.0	179.0
OD (in)	ID (in)
8 5/8	8.097

General Rig - Original Hole	
Wellbore Name	Parent Wellbore
Original Hole	
Bottom Hole Legnd Location	Hole Direction
TX RRC DIST 8/SURV UL/ABS NA/BL L/SEC 5	VERTICAL
Job	
New Drilling, New Well, Drilling & Completions on 10/9/2007 06:00	

Survey Data	
Date	Description
11/18/2007 8:30:00 AM	General Rig
Measured Depth (ftKB)	Inclination (°)
3,145.00	1.75
Azimuth (°)	
0.00	

Hole Direction: VERTICAL - Original Hole, 11/19/2007 5:59:11KB (MD)

Schematic - Actual

Surface, 8-179

Surface, 8 5/8, 8, 171.0

Original Hole, 7 7/8, 179-3,516

TD, 3,516, 11/11/2007



Yates Daily Drilling Report

Report Date: 11/19/2007

Report #: 31.0

UNIVERSITY DEVIL WOMAN L5 #1

Day # 10

Bit Record					API/UWI	County	State	Surface Legal Location																																																																												
Bit Number	Drill Bit	Outlet	Nozzles (#32)		4222930253	HUDSPETH	TEXAS	TX RRC DIST 8/SURV UL/ABS NA/BL L/SEC 5																																																																												
4	Bit # 4 - 7 7/8, GX-30C, 5133258	-----	16/16/16		Operator	TRAIL MOUNTAIN, INC.	Hole Direction	VERTICAL	N/S Dist	N/S Ref	E/W Dist	E/W Ref	Gr Elev (ft)	Orig KB Elev																																																																						
									660.0	FSL	660.0	FEL	4,006.00	4,014.00																																																																						
Depth in (ftKB)					Jobs																																																																															
2,685.0					A/E Number					Total A/E Amount					Tgt Depth (ftKB)					Target Formation					Bottom Hole Legal Location					Drill Hrs...																																																						
					073960					1,016,550.00					3,000.0					SILURIAN					TX RRC DIST 8/SURV UL/ABS NA/BL L/SEC 5					131.75																																																						
Depth Out (ft)					Daily Cost Total					Cum Cost To Date					Daily Mud Cost					Mud Additive Cost To Date																																																																
3,516.0					14,110.00					312,389.12										15,447.00																																																																
Job Drill Hr...					Day No.					Report End Date					Formation at Report Time					Lithology					Present Operations																																																											
831.00					10					11/19/2007					DEVONIAN					60%LIME30%CHERT10%SHALE					CIRCULATE																																																											
Avg ROP...					Hole Direction: VERTICAL - Original Hole, 11/19/2007 5:59:16					Depth End (ftKB)					Depth Start (ftKB)					Depth Progress (ft)					Drilling Hours (hrs)					Average ROP (ft/hr)																																																						
24.4					Schematic - Actual					3,516.0					3,113.0					403.00					16.00					25.2																																																						
Remarks																																																																																				
GAS SHOWS F/3345-3431 MAX 431 UNITS																																																																																				
Avg Background Gas (unit)															Max Background Gas (unit)										Avg Connection Gas (unit)										Max Connection Gas (unit)																																																	
71.00															431.00										30.00																																																											
Avg Trip Gas (unit)															Max Trip Gas (unit)										Flare																																																											
Mud Checks																																																																																				
Weight (lb/gal)															Chlorides (ppm)										Calcium (ppm)										Solids (%)										LCM																																							
8.90																																																																																				
Funnel Viscosity (stqt)															PV (cp)										YP (lb/100Hr)										Gel 10 sec (lb/100Hr)										Gel 10 min (lb/100Hr)										pH																													
36																																																							9.0																													
Water Loss (ml/30min)															Filter Cake (32")										KCl (%)										Percent Oil (%)																																																	
10.0																																																																																				
Comment																																																																																				
Time Log																																																																																				
Start Time															Dur (hrs)										End Time										Cum Dur (hrs)										Time Code										Depth Start (ftKB)										Depth End (ftKB)										Comment									
06:00															1.00										07:00										1.00										DRILLING										3,113.0										3,145.0																			
07:00															0.50										07:30										1.50										DEVIATION SURVEY										3,145.0																				WLS @ 3103-MISSRUN									
07:30															0.50										08:00										2.00										SERVICE RIG																																							
08:00															0.50										08:30										2.50										DRILLING										3,145.0										3,176.0																			
08:30															0.50										09:00										3.00										DEVIATION SURVEY										3,176.0																				WLS@3134-1 3/4*									
09:00															14.50										23:30										17.50										DRILLING										3,176.0										3,516.0										TD WELL @ 3516									
23:30															1.50										01:00										19.00										CIRCULATE										3,516.0																				SWEEP HOLE AND CIRCULATED									
01:00															1.75										02:45										20.75										SHORT TRIP OUT																														SHORT TRIP OUT TO 2700' (NO DRAG) WAITED 30 MINUTES.									
02:45															1.25										04:00										22.00										SHORT TRIP IN																														TRIP IN HOLE NO TIGHT SPOTS AND NO FILL									
04:00															2.00										06:00										24.00										CIRCULATE																																							
Daily Costs																																																																																				
Cost Description															Cost Details										Cost										Vendor																																																	
Drilling, Daywork																									12,500.00										UNITED DRILLING																																																	
Drilling, Power & Fuel																																			THOMAS PETROLEUM																																																	
Drilling Mud & Additives																																			ARTESIA LUMBER COMPANY																																																	
Drilling Water, Fastline Rental															Water Hauling																				JIM'S WATER SERVICE																																																	
Tools&Equip.															Safety Equipment										100.00										CALLAWAY SAFETY																																																	
Rntl.Trkg.&Welding-Drilling																																																																																				
Tools & Equip. Rental, Etc.- Completions															Light Plant										110.00										LIGHT TOWER																																																	
Supervision & Overhead - Drilling																									1,200.00										RGI INC.																																																	
Supervision & Overhead - Drilling															Trailer Rental										75.00										RGI INC.																																																	
Supervision & Overhead - Drilling															Communication										125.00										PASON																																																	
Daily Contacts																																																																																				
Job Contact															Company										Phone Mobile																																																											
TIM BUSSELL, DRLG SUPERINTENDENT															YATES										575-365-5695																																																											
Job Contact															Company										Phone Mobile																																																											
JOE ORONA, DRILLING CONSULTANT															RIG										575-631-6924																																																											
Job Contact															Company										Phone Mobile																																																											
MIGUEL MADRID, TOOLPUSHER															UNITED DRILLING COMPANY										575-910-3078																																																											
Job Contact															Company										Phone Mobile																																																											
RIG FLOOR - 34, RIG PHONE															UNITED DRILLING COMPANY										575-910-0365																																																											
Job Contact															Company										Phone Mobile																																																											
MIKE HILL, ENGINEER															YATES										575-365-8706																																																											
Job Contact															Company										Phone Mobile																																																											
DAVID PROSE, GEOLOGIST																									817-937-3229																																																											
Job Contact															Company										Phone Mobile																																																											
ROB BULLOCK, LANDMAN															YATES																																																																					
Rigs																																																																																				
Rig Contractor															Rig Number										KB from GL (ft)										Rig Type																																																	
UNITED DRILLING, INC.															34										8.00										Drilling - Single																																																	
Mud Pumps - 1																																																																																				
No.															Start Date										Make										Model										Pwr (hp)										Rod Dia (in)																													
1															11/5/2007 00:00										Upetrom																				500.0										2																													
Liner Size (in)															Start Date										End Date										Maximum Pressure (psi)										Vol/Str - 100% (bbls/ft)																																							
7 1/4															11/5/2007 00:00										10/28/2008 00:00																				0.229																																							

Original Hole, 12 1/4, 8-179

Surface, 8 5/8, 8, 171.0

Original Hole, 7 7/8, 179-3,516

TD, 3,516, 11/11/2007



Yates Daily Drilling Report

Report Date: 11/19/2007

UNIVERSITY DEVIL WOMAN L5 #1

Report #: 31.0

Day # 10

Pump Checks	
Pump Number	Date
1	11/19/2007 05:59
Depth (ft)	3,516.0
Slow Spd	No
Strokes (spm)	62
Pressure (psi)	950.0

Mud Pumps - 2	
No.	Start Date
2	11/5/2007 00:00
Make	Gardner Denver
Model	FNX
Flw (gpm)	500.0
Rod Dia (in)	2
Liner Size (in)	7 1/4
Start Date	11/5/2007 00:00
End Date	10/30/2008 00:00
Maximum Pressure (psi)	
Vol/Str - 100% (bbl/s)	0.229

Safety Checks	
Date	Description
Type	Comment

Mud Additive Amounts	
Description	Type
Yellow Starch	Consumed
	16.0 sacks
Fresh Gel	Consumed
	91.0 sacks

Drill Strings: BHA #9, Slick	
Bit Number	Drill Bit
4	6 1/2 - 7 7/8, GX 300, 5133256
Depth In (ft)	3,113.0
Depth Out (ft)	3,516.0
Drilled (ft)	403.00
Drill Time (hrs)	16.00
BHA ROP (ft/hr)	25.2
String Length (ft)	3,500.63
String Wt (1000lb)	49
OD (in)	6.250
ADC Bit Cull	-----
TFA (in)	
Nozzles (#32)	16/16/16

Drill Form - Drilling Parameters 3,113.0 ftKB - 3,516.0 ftKB -	
WOB (1000lb)	RPM (rpm)
40	950.0
Motor R...	SPP (psi)
	65
Rot. String Wt. (1000lb)	PU Str Wt (1000lb)
96	100
SO Str Wt (1000lb)	92

Item Description	OD (in)	ID (in)	Grade	Mass Len (lbs/ft)	Top Thread	Len (ft)	Jts
Drill Pipe	4 1/2	2.750		16.60		2,980.00	95
Drill Collar - Short	6 1/4	2.500				518.08	20
Bit Sub	6 1/4	2.500				1.55	1

Casing Strings	
Casing Description	Run Date
Surface	11/10/2007 05:00
Depth Cut Pull (ft)	8.0
Set Depth (ft)	179.0
OD (in)	8 5/8
ID (in)	8.097

General Rig - Original Hole	
Wellbore Name	Parent Wellbore
Original Hole	
Bottom Hole Legal Location	Hole Direction
TX RRC DIST	VERTICAL
8/SURV UL/ABS	
NA/BL L/SEC 5	
Job	New Drilling, New Well, Drilling & Completions on 10/9/2007 06:00

Survey Data	
Date	Description
11/18/2007 8:30:00 AM	General Rig
Measured Depth (ft)	3,145.00
Inclination (°)	1.75
Azimuth (°)	0.00

Hole Direction: VERTICAL - Original Hole, 11/19/2007 5:59:11KB (MD)

Schematic - Actual

Surface, 8-179

Surface, 8 5/8, 8, 171.0

Original Hole, 7 7/8, 179-3,516

TD, 3,516, 11/11/2007



Yates Daily Drilling Report

Report Date: 11/21/2007

Report #: 33.0

UNIVERSITY DEVIL WOMAN L5 #1

Day # 12

Bit Record				API/UWI	County	State	Surface Legal Location						
Bit Number	Drill Bit	Dull Out	Nozzles (#32")	4222930253	HUDSPETH	TEXAS	TX RRC DIST 8/SURV UL/ABS NA/BL L/SEC 5						
Depth In (ft)	Depth Out (ft)	Depth Drill...	Job Drill Hr...	Avg ROP...	Operator	Hole Direction	N/S Dist ...	N/S Ref	E/W Dist ...	E/W Ref	Gr Elev (ft)	Orig RB Elev ...	
					TRAIL MOUNTAIN, INC.	VERTICAL	660.0	FSL	660.0	FEL	4,006.00	4,014.00	
Jobs													
Job Number		Total AFE Amount		Tgt Depth (ft)		Target Formation		Bottom Hole Legal Location				Drill Hrs...	
073960		1,016,550.00		3,000.0		SILURIAN		TX RRC DIST 8/SURV UL/ABS NA/BL L/SEC 5				131.75	
Daily Cost Total				Cum Cost To Date				Daily Mud Cost		Mud Additive Cost To Date			
62,410.93				393,412.05						19,939.00			
Day No.		Report End Date		Formation at Report Time		Lithology		Present Operations					
12		11/21/2007 05:59											
Hole Direction: VERTICAL - Original Hole, 11/21/2007 5:59:05:59													
HKB (MD) Schematic - Actual													
Depth End (ft)				Depth Start (ft)				Depth Progress (ft)		Drilling Hours (hrs)		Average ROP (ft/hr)	
3,516.0				3,516.0				0.00					
Remarks													
Avg Background Gas (unit)				Max Background Gas (unit)				Avg Connection Gas (unit)		Max Connection Gas (unit)			
Avg Trip Gas (unit)				Max Trip Gas (unit)				Flow					
Mud Checks													
Weight (lb/gal)		Chlorides (ppm)		Calcium (ppm)		Solids (%)		LCM					
Funnel Viscosity (sf/c)		PV (cp)		YP (lb/100ft ²)		Gel 10 sec (lb/100ft ²)		Gel 10 min (lb/100ft ²)		pH			
Water Loss (mL/30min)		Filter Cake (in)		KCl (%)		Percent Oil (%)							
Comment													
Time Log													
Start Time	Dur (hrs)	End Time	Cum Dur (hrs)	Time Code	Depth Start (ft)	Depth End (ft)	Comment						
06:00	1.00	07:00	1.00	LOGGING			FINISH RIGGING LOGGERS DOWN						
07:00	2.50	09:30	3.50	WAIT ON EQUIPMENT			WAIT ON CASING CREW						
09:30	4.00	13:30	7.50	RUN CASING			RAN 83 JOINTS OF 5 1/2" L80 17# CASING.						
13:30	1.00	14:30	8.50	WASH TO BOTTOM			WASH TO BOTTOM, HAD 5' OF FILL.						
14:30	2.50	17:00	11.00	CEMENTING			HELD SAFETY MEETING PRIOR TO STARTING CEMENT JOB, RIGGED UP HALLIBURTON CEMENTERS AND CEMENTED, LEAD CEMENT, MIX AND PUMP 375 SKS PREMIUM-PLUS @ 13.5-177-9.09, TAIL CEMENT-MIX AND PUMP 375 SKS PBSH @ 13.2-1.61-8.39, PLUG DOWN @ 16:52, (PLUG DID NOT BUMP) AND DID NOT CIRCULATE CEMENT.						
17:00	10.50	03:30	21.50	WAIT ON CEMENT			WOC AND WAIT ON TEMPERATURE SURVEY						
03:30	1.75	05:15	23.25	TEMPERATURE SURVEY			RIG UP WIRE LINE AND RAN TEMP. SURVEY - TOP OF CEMENT @ 406'						
05:15	0.75	06:00	24.00	PICKUP/LAY... TOOLS			PICK UP 1" PIPE						
Daily Costs													
Cost Description		Cost Details		Cost	Vendor								
Drilling, Daywork				12,500.00	UNITED DRILLING								
Drilling, Power & Fuel					THOMAS PETROLEUM								
Drilling Mud & Additives					ARTESIA LUMBER COMPANY								
Drilling Water, Fasline Rental		Water Hauling		5,190.00	JIM'S WATER SERVICE								
Tools & Equip. Rental, Trkg. & Welding-Drilling		Safety Equipment		100.00	CALLAWAY SAFETY								
Tools & Equip. Rental, Etc. - Completions		Light Plant		110.00	LIGHT TOWER								
Supervision & Overhead - Drilling				1,200.00	RGI INC.								
Supervision & Overhead - Drilling		Trailer Rental		75.00	RGI INC.								
Supervision & Overhead - Drilling		Communication		125.00	PASON								
Wireline & Slickline & Perf.				37,938.93	SCHLUMBERGER WIRELINE & TESTING								
Casing		Casing Crews		1,875.00	BULL RODGERS CASING								
Casing Inspection - All Strings				992.00	CHARLIE'S ROUSTABOUT SERVICE								
Wireline & Slickline & Perf.				2,305.00	ARC PRESSURE DATA								
Daily Contacts													
Job Contact				Company				Phone Mobile					
TIM BUSSELL, DRLG SUPERINTENDENT				YATES				575-365-5695					

www.peloton.com

Page 1/2

Report Printed: 11/21/2007



Yates Daily Drilling Report

Report Date: 11/21/2007

UNIVERSITY DEVIL WOMAN L5 #1

Report #: 33.0

Day # 12

Hole Direction: VERTICAL - Original Hole, 11/21/2007 5:59:18 KKB (MD)		Schematic - Actual									
Daily Contacts											
Job Contact	JOE ORONA, DRILLING CONSULTANT	Company	RIG	Phone Mobile	575-631-6924						
Job Contact	MIGUEL MADRID, TOOLPUSHER	Company	UNITED DRILLING COMPANY	Phone Mobile	575-910-3078						
Job Contact	RIG FLOOR - 34, RIG PHONE	Company	UNITED DRILLING COMPANY	Phone Mobile	575-910-0365						
Job Contact	MIKE HILL, ENGINEER	Company	YATES	Phone Mobile	575-365-8706						
Job Contact	DAVID PROSE, GEOLOGIST	Company	YATES	Phone Mobile	817-937-3229						
Job Contact	ROB BULLOCK, LANDMAN	Company	YATES	Phone Mobile							
Rigs											
Rig Contractor	UNITED DRILLING, INC.	Rig Number	34	KB from GL (ft)	8.00	Rig Type	Drilling - Single				
Mud Pumps - 1											
No.	1	Start Date	11/5/2007 00:00	Make	Upetrom	Model		Pwr (hp)	500.0	Rod Dia (in)	2
Liner Size (in)	7 1/4	Start Date	11/5/2007 00:00	End Date	10/28/2008 00:00	Maximum Pressure (psi)		Vol/Str - 100% (bbl/s)			0.229
Mud Pumps - 2											
No.	2	Start Date	11/5/2007 00:00	Make	Gardner Denver	Model	FNX	Pwr (hp)	500.0	Rod Dia (in)	2
Liner Size (in)	7 1/4	Start Date	11/5/2007 00:00	End Date	10/30/2008 00:00	Maximum Pressure (psi)		Vol/Str - 100% (bbl/s)			0.229
Safety Checks											
Date	11/20/2007 09:30	Description	CASING JOB	Type	Safety Meeting	Comment	HELD SAFTY MEETING WITH BULL RODGERS CASING CREW PRIOR TO RUNNING CASING				
Date	11/20/2007 14:30	Description	CEMENT JOB	Type	Safety Meeting	Comment	HELD SAFTY MEETING W/ HALLIBURTON CREW PRIOR TO CEMENTING				
Mud Additive Amounts											
Description		Type		Consumed	Units						
Casing Strings											
Casing Description	Surface	Run Date	11/10/2007 05:00	Depth Cut Pull (ft)	8.0	Set Depth (ftKB)	179.0	OD (in)	8 5/8	ID (in)	6.097
Casing Description	Production	Run Date	11/20/2007 17:00	Depth Cut Pull (ft)	8.0	Set Depth (ftKB)	3,516.0	OD (in)	5 1/2	ID (in)	4.892
General Rig- Original Hole											
Wellbore Name	Original Hole	Parent Wellbore		Bottom Hole Legal Location	TX RRC DIST 8/SURV UL/ABS NA/BL L/SEC 5	Hole Direction	VERTICAL	Job	New Drilling, New Well, Drilling & Completions on 10/9/2007 06:00		
Survey Data											
Date		Description	General Rig	Measured Depth (ftKB)		Inclination (°)		Azimuth (°)			



Yates Daily Drilling Report

Report Date: 11/22/2007

UNIVERSITY DEVIL WOMAN L5 #1

Report #: 34.0

Day # 13

Bit Record					API/UDI	County	State	Surface Legal Location				
Bit Number	Drill Bit	Dull Out	Nozzles (3/32")		4222930253	HUDDSPETH	TEXAS	TX RRC DIST 8/SURV UL/ABS NA/BL L/SEC 5				
Depth In (ft)	Depth Out (ft)	Depth Drill...	Job Drill Hr...	Avg ROP...	Operator	Hole Direction	N/S Dist...	N/S Ref	E/W Dist...	E/W Ref	Gr Elev (ft)	Orig KB Elev...
					TRAIL MOUNTAIN, INC.	VERTICAL	660.0	FSL	660.0	FEL	4,005.00	4,014.00
Jobs												
AFE Number		Total AFE Amount		Tgt Depth (ft)	Target Formation		Bottom Hole Legal Location			Drill Hrs...		
073960		1,016,550.00		3,000.0	SILURIAN		TX RRC DIST 8/SURV UL/ABS NA/BL L/SEC 5			131.75		
Daily Cost Total			Cum Cost To Date			Daily Mud Cost			Mud Additive Cost To Date			
61,123.31			454,535.36						19,939.00			
Day No.	Report End Date	Formation at Report Time		Lithology		Present Operations						
13	11/22/2007 05:59											
Hole Direction: VERTICAL - Original Hole, 11/22/2007 5:59:05:59												
Schematic - Actual												
Depth End (ft)		Depth Start (ft)		Depth Progress (ft)		Drilling Hours (hrs)		Average ROP (ft/hr)				
3,516.0		3,516.0		0.00								
Remarks												
MOVED RIG												
Avg Background Gas (unit)			Max Background Gas (unit)			Avg Connection Gas (unit)			Max Connection Gas (unit)			
Avg Trip Gas (unit)			Max Trip Gas (unit)			Flare						
Mud Checks												
Weight (lb/gal)		Chlorides (ppm)		Calcium (ppm)		Solids (%)		LCM				
Furnel Viscosity (cP)		PV (cp)		YP (lb/100ft ²)		Gel 10 sec (lb/100ft ²)		Gel 10 min (lb/100ft ²)		pH		
Water Loss (ml/30min)		Filter Cake (3/32")		RCL (%)		Percent Oil (%)						
Comment												
Time Log												
Start Time	End Time	Dur (hrs)	Cum Dur (hrs)	Time Code	Depth Start (ft)	Depth End (ft)	Comment					
06:00	06:30	0.50	0.50	TRIP IN			PICKED UP 1" PIPE AND TAGGED @ 445 -					
06:30	07:00	0.50	1.00	CEMENTING			CEMENT (FIRST) MIX AND PUMP 60 SKS PREM.PLUS @ 14.8-1.35-6.37, TOH WITH 1" PIPE					
07:00	09:00	2.00	3.00	WAIT ON CEMENT								
09:00	09:30	0.50	3.50	TRIP IN			PICKED UP 1" PIPE AND TAGGED CEMENT @ 200'					
09:30	10:00	0.50	4.00	CEMENTING			CEMENT STAGE #2, MIX AND PUMP 65 SKS PREM. PLUS W/2% C/C @ 14.8-1.35-6.37 CIRCULATED 25 SKS TO PIT, TOH WITH 1" PIPE.					
10:00	10:30	0.50	4.50	RIG UP / RIG DOWN EQUIPMENT			RIG DOWN CEMENTERS					
10:30	13:00	2.50	7.00	NIPPLE UP/DOWN BOP STACK			NIPPLE DOWN, SET SLIPS AND CUT OFF CASING.					
13:00	06:00	17.00	24.00	RIG UP / RIG DOWN EQUIPMENT			RIG RELEASED @ 13:00 11/21/2007, RIG DOWN AND MOVE STARTED MOVING RIG OUT FROM LOCATION.					
Daily Costs												
Cost Description		Cost Details		Cost		Vendor						
Drilling, Daywork				12,500.00		UNITED DRILLING						
Drilling Mud & Additives						ARTESIA LUMBER COMPANY						
Drilling Water, Fasline Rental		Water Hauling		1,026.00		JIM'S WATER SERVICE						
Tools & Equip.		Safety Equipment		100.00		CALLAWAY SAFETY						
Rntl. Trkg. & Welding-Drilling												
Tools & Equip. Rental, Etc. - Completions		Light Plant		110.00		LIGHT TOWER						
Supervision & Overhead - Drilling				1,200.00		RGI INC.						
Supervision & Overhead - Drilling		Trailer Rental		75.00		RGI INC.						
Supervision & Overhead - Drilling		Communication		125.00		PASON						
Cementing - Surface & Intermediate Casing				43,029.81		HALLIBURTON ENERGY SERVICES						
Tools & Equip.				2,957.50		WILBANKS TRUCKING						
Rntl. Trkg. & Welding-Drilling												
Daily Contacts												
Job Contact		Company		Phone Mobile								
TIM BUSSELL, DRLG SUPERINTENDENT		YATES		575-365-5695								
Job Contact		Company		Phone Mobile								
JOE ORONA, DRILLING CONSULTANT		RIG		575-631-6924								
Job Contact		Company		Phone Mobile								
MIGUEL MADRID, TOOLPUSHER		UNITED DRILLING COMPANY		575-910-3078								



Yates Daily Drilling Report

Report Date: 11/22/2007

UNIVERSITY DEVIL WOMAN L5 #1

Report #: 34.0

Day # 13

Hole Direction: VERTICAL - Original Hole, 11/22/2007 5:59...	
HKB (MD)	
-18	
0	
7	
8	
135	
135	
150	
177	
179	Surface, 8-179
200	Production, 8-200
445	Production, 200-445
3,000	
3,492	
3,493	
3,514	
3,516	Production, 445-3,516
	Original Hole, 12 1/4, 8-179
	Original Hole, 7 7/8, 179-3,516
	Production, 5 1/2, 8, 3,508.0 TD, 3,516, 11/11/2007

Daily Contacts			
Job Contact	RIG FLOOR - 34, RIG PHONE	Company	UNITED DRILLING COMPANY
Job Contact	MIKE HILL, ENGINEER	Company	YATES
Job Contact	DAVID PROSE, GEOLOGIST	Company	
Job Contact	ROB BULLOCK, LANDMAN	Company	YATES

Rigs			
Rig Contractor	UNITED DRILLING, INC.	Rig Number	34
Rig from GL (ft)	8.00	Rig Type	Drilling - Single

Mud Pumps - 1			
No.	1	Start Date	11/5/2007 00:00
Make	Upetrom	Model	
Pwr (hp)	500.0	Rod Dia (in)	2
Liner Size (in)	7 1/4	Start Date	11/5/2007 00:00
End Date	10/28/2008 00:00	Maximum Pressure (psi)	
Vol/Str - 100% (bbl/s...)	0.229		

Mud Pumps - 2			
No.	2	Start Date	11/5/2007 00:00
Make	Gardner Denver	Model	FNX
Pwr (hp)	500.0	Rod Dia (in)	2
Liner Size (in)	7 1/4	Start Date	11/5/2007 00:00
End Date	10/30/2008 00:00	Maximum Pressure (psi)	
Vol/Str - 100% (bbl/s...)	0.229		

Safety Checks			
Date		Description	Type
			Comment

Mud Additive Amounts			
Description		Type	Consumed
			Units

Casing Strings					
Casing Description	Run Date	Depth Cut Pull (ft...)	Set Depth (ftKB)	OD (in)	ID (in)
Surface	11/10/2007 05:00	8.0	179.0	8 5/8	8.097
Casing Description	Run Date	Depth Cut Pull (ft...)	Set Depth (ftKB)	OD (in)	ID (in)
Production	11/20/2007 17:00	8.0	3,516.0	5 1/2	4.892

General Rig - Original Hole			
Wellbore Name	Parent Wellbore	Bottom Hole Legal Location	Hole Direction
Original Hole		TX RRC DIST 8/SURV UL/ABS NAB/L SEC 5	VERTICAL
			Job
			New Drilling, New Well, Drilling & Completions on 10/9/2007 06:00

Survey Data			
Date		Description	Measured Depth (ftKB)
		General Rig	Inclination (°)
			Azimuth (°)



Yates Daily Completion Report

UNIVERSITY DEVIL WOMAN L5 #1

Day # 3

Report # 38.0, Report Date: 11/28/2007

Job Direction: VERTICAL - Original Hole, 11/28/2007 8:00		API/Well	Surface Legal Location		County	State	Operator
11/28/2007	Schematic - Actual	4222930253	TX RRC DIST 8/SURV UL/ABS NA/BL L/SEC 5		HUDSPETH	TEXAS	TRAIL MOUNTAIN, INC.
N/S Dist (ft)		North/South Reference		East/West Distance (ft)	East/West Reference	Ground Elevation (ft)	KB-Ground Distance (ft)
660.0		FSL		660.0	FEL	4,006.00	8.00
AFE Number		Job Category		Primary Job Type	Department	Total AFE Amount	
073960		New Drilling		New Well	Drilling & Completions	1,016,550.00	
Phases							
Phase Type 1				Actual Phase Cost			
DRILLING				454,535.36			
COMPLETION				27,815.00			
Daily Operations							
Day No.	Report Start Date	Report End Date	Formation at Report Time	Lithology	Daily Report Summary		
3	11/28/2007	11/28/2007	WOODFORD /SH/	SHALE	RUN CBL, PERFORATE, TIH, ACIDIZE, SWAB TEST.		
Operations Next Report Period				Remarks			
SWAB TEST.							
Daily Cost Total		Actual Phase Cost		Cum Cost To Date			
9,895.00		27,815.00		482,350.36			
Daily Contacts							
Job Contact				Phone Mobile			
WADE WHITE, COMPLETIONS FOREMAN				575-703-2585			
Job Contact				Phone Mobile			
MIKE HILL, ENGINEER				575-365-8706			
Job Contact				Phone Mobile			
DAVID PROSE, GEOLOGIST				817-937-3229			
Job Contact				Phone Mobile			
ROB BULLOCK, LANDMAN							
Time Log							
Start Time	End Time	Dur (hrs)	Time Code	Comment			
07:00	11:00	4.00	W/L OPERATION	RU BWWL. RUN A CBL-GR-CC LOG FROM 3478' TO SURFACE. EST. T.O.C. AT SURFACE. PERFORATE: 3385'-3410' (151) (WOODFORD SHALE) TIH W/ A 5 1/2" 17# AS-1 PKR, S.N. AND 101-JTS 2 7/8" TBG. SET PKR AT 3340'. RU CRAIN. BREAK DOWN PERFS 3385' TO 3410' (151) W/ 1300 GAL 7% KCL. BROKE-3015 PSI, AVG-5 BPM, AVG-1450 PSI, ISDP-850, 15MIN-545 PSI. TLTR-51 BBLs. SEE SWAB REPORT.			
11:00	14:00	3.00	PERFORATING				
14:00	16:00	2.00	ACID JOB				
16:00	18:00	2.00	WELL TEST				
Daily Costs							
Cost Description		Cost Details		Cost	Vendor		
Completion Unit		Safety Equipment		4,400.00	RELIABLE		
Tools & Equip. Rental, Etc. - Completions				115.00	ALLIANCE		
Supervision & O/H - Completion				300.00	YPC		
Tools & Equip. Rental, Etc. - Completions		Other Rentals		230.00	PIMA		
Tools & Equip. Rental, Etc. - Completions		Other Rentals		2,300.00	DOUBLE D		
Tools & Equip. Rental, Etc. - Completions		Tanks		100.00	TWO-STATE EQUIPMENT, INC.		
Tools & Equip. Rental, Etc. - Completions		BOP		50.00	WRH		
Water for Completion				1,200.00	TCB		
Stimulation for Completion					CRAIN		
Tools & Equip. Rental, Etc. - Completions		Pump Truck		1,200.00	JWS		
Rigs							
Rig Contractor	Rig Type	Rig No.	Rig Supervisor	Rig Start Date	Rig Release Date		
RELIABLE	WSU - Completion Rig			11/25/2007	07:00		
Perforation Statuses							
Open - Testing, 11/28/2007 14:00							
Date	Zone	Depth Top (ftKB)	Depth Btm (ftKB)	Status			
11/28/2007	PERCHA /SH/ (WOODFORD SHALE) - 3,353.0', Original Hole	3,385.0	3,410.0	Open - Testing			
Tubing - Production set at 3,340.0ftKB on 11/28/2007 14:00							
Tubing Description		Set Depth (ftKB)	OD (in)	WT (lbs/ft)	String Length (ft)	String Grade	Full Date
Tubing - Production		3,340.0	2 7/8	6.50	3,332.00	J-55	
Tubing Components							
JIS	Item Description	OD (in)	ID (in)	Grade	Top (ftKB)	Cum Len (ft)	
101	Tubing	2 7/8	2.441	J-55	8.0	3,332.00	
	Seal Nipple	2 7/8	2.250		3,333.0	7.00	
	AS-1 PKR	5 1/2	2.441		3,334.0	6.00	
Casing Strings							
Casing Description	OD (in)	String Grade	WT (lbs/ft)	Set Depth (ftKB)	Length (ft)		
Surface - 24# J55	8 5/8	J-55	24.00	179.0	171.77		
Casing Description	OD (in)	String Grade	WT (lbs/ft)	Set Depth (ftKB)	Length (ft)		
Production - 17# L80	5 1/2	L-80	17.00	3,516.0	3,534.01		
Stimulations & Treatments							
7% KCL H2O on 11/28/2007 15:00							
Date	Zone	Type	Diversion Method	Stim/Treat Company			
11/28/2007	PERCHA /SH/ (WOODFORD SHALE) - 3,353.0', Original Hole	7% KCL H2O		CRAIN ACIDIZING			
15:00							
Stage #<Stage Number?>							
Stage Number	Stage Type	Fluid	V clean (gal)	Top (ftKB)	Bottom (ftKB)	ISDP (psi)	15 Min SIP (psi)
3,514	7% KCL	7% KCL	1300	3,385.0	3,410.0	850.0	545.0
	WTR.						
P (brack) (psi)	Q (init fld) (gpm)	Avg FI Rate (bbl/min)	Q (gas) (ft/min)	Gas Type	V (gas) (mcf)	Pressure Tbl.	Pressure Cast.
3,015.0		5				1,450.0	51.0
Additive	Type	Amount	Units	Conc (lb/gal)	Sand Size	Note	



Yates Daily Completion Report

UNIVERSITY DEVIL WOMAN L5 #1

Day # 3

Report # 38.0, Report Date: 11/28/2007

Hole Direction: VERTICAL - Original Hole, 11/28/2007 G

(KID) Schematic - Actual From Final

Swabs

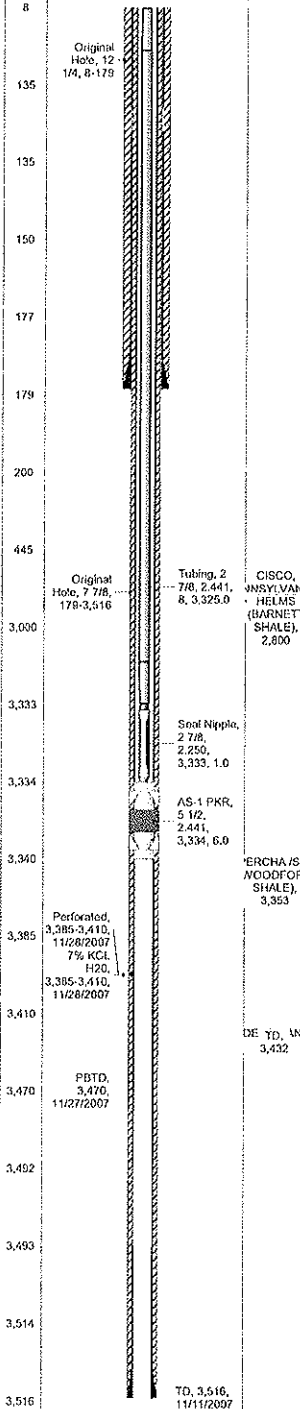
11/28/2007 16:30

Date	Zone	Total Oil (bbl)	Total Water (...)	Total Vol (bbl)	Swab Company
11/28/2007 16:30	PERCHA /SH/ (WOODFORD SHALE) - 3,353.0', Original Hole	0.0	17.0	17.0	RELIABLE

Comment

Swab Details

Start Time	#	Init Fl Lvl (KID)	Choke Sz (in)	P (well) (psi)	P (cas) (psi)	% H2O (%)	Recov (bbl)	Fluid Mea...	Oil (bbl)	Water Amt (bbl)	Ld Left to Rec (bbl)	Rate Gas (mcf/day)	Gas Rate Mea...	Comment
16:30			0.500	150.0		100.0	1.0		0.0	1.0	50.0			FLOW WELL DOWN.
17:00	2	2,100				100.0	10.0		0.0	10.0	40.0			H2O
18:00	3	3,300				100.0	6.0		0.0	6.0	34.0			H2O, SWAB WELL DRY. SWI SD.





Yates Daily Completion Report

UNIVERSITY DEVIL WOMAN L5 #1

Report # 39.0, Report Date: 11/29/2007

Day # 4

Hole Direction: VERTICAL - Original Hole, 11/29/2007 5		API/Well	Surface Legal Location		County	State	Operator							
IRB (MD)		4222930253	TX RRC DIST 8/SURV UL/ABS NA/BL L/SEC 5		HUDSPETH	TEXAS	TRAIL MOUNTAIN, INC.							
Schematic - Actual		Firm Final												
N/S Dist (ft)		North/South Reference	East/West Distance (ft)	East/West Reference	Ground Elevation (ft)	KB-Ground Distance (ft)								
660.0		FSL	660.0	FEL	4,006.00	8.00								
AFE Number		Job Category	Primary Job Type	Department	Total AFE Amount									
073960		New Drilling	New Well	Drilling & Completions	1,016,550.00									
Phases				Actual Phase Cost										
Phase Type 1				454,535.36										
DRILLING				45,240.00										
COMPLETION														
Daily Operations														
Day No.	Report Start Date	Report End Date	Formation at Report Time	Lithology	Daily Report Summary									
4	11/29/2007	11/29/2007	WOODFORD /SH/	SHALE	SWAB TEST.									
07:00		17:00												
Operations Next Report Period														
SWAB TEST.														
Daily Cost Total		Actual Phase Cost		Cum Cost To Date										
17,425.00		45,240.00		499,775.36										
Daily Contacts														
Job Contact				Phone Mobile										
WADE WHITE, COMPLETIONS FOREMAN				575-703-2565										
Job Contact				Phone Mobile										
MIKE HILL, ENGINEER				575-365-8706										
Job Contact				Phone Mobile										
DAVID PROSE, GEOLOGIST				817-937-3229										
Job Contact				Phone Mobile										
ROB BULLOCK, LANDMAN														
Time Log														
Start Time	End Time	Dur (hrs)	Time Code	Comment										
07:00	17:00	10.00	WELL TEST	SITP-0. SEE SWAB REPORT.										
Daily Costs														
Cost Description		Cost Details		Cost	Vendor									
Completion Unit		Safety Equipment		4,200.00	RELIABLE									
Tools & Equip. Rental, Etc. - Completions				115.00	ALLIANCE									
Supervision & O/H - Completion				300.00	YPC									
Tools & Equip. Rental, Etc. - Completions		Other Rentals		230.00	PIMA									
Tools & Equip. Rental, Etc. - Completions		Other Rentals		30.00	DOUBLE D									
Tools & Equip. Rental, Etc. - Completions		Tanks		9,000.00	TWO-STATE EQUIPMENT, INC.									
Tools & Equip. Rental, Etc. - Completions		BOP		50.00	WRH									
Water for Completion					TCB									
Stimulation for Completion				3,500.00	CRAIN									
Rigs														
Rig Contractor		Rig Type	Rig No.	Rig Supervisor		Rig Start Date	Rig Release Date							
RELIABLE		WSU - Completion Rig				11/25/2007	07:00							
Perforation Statuses														
Open - Testing, 11/28/2007 14:00														
Date	Zone	Set Depth (ftKB)	Depth Top (ftKB)	Depth Btm (ftKB)	Status									
11/28/2007	PERCHA /SH/ (WOODFORD SHALE) - 3,353.0', Original Hole		3,385.0	3,410.0	Open - Testing									
Tubing - Production set at 3,340.0ftKB on 11/28/2007 14:00														
Tubing Description		Set Depth (ftKB)	OD (in)	Wt (lbs/ft)	String Length (ft)	String Grade	Pull Date							
Tubing - Production		3,340.0	2 7/8	6.50	3,332.00	J-55								
Tubing Components														
Jts	Item Description	OD (in)	ID (in)	Grade	Top (ftKB)	Cum Len (ft)								
101	Tubing	2 7/8	2.441	J-55	8.0	3,332.00								
	Seal Nipple	2 7/8	2.250		3,333.0	7.00								
	AS-1 PKR	5 1/2	2.441		3,334.0	6.00								
Casing Strings														
Casing Description		OD (in)	String Grade	Wt (lbs/ft)	Set Depth (ftKB)	Length (ft)								
Surface - 24# J55		8 5/8	J-55	24.00	179.0	171.77								
Casing Description		OD (in)	String Grade	Wt (lbs/ft)	Set Depth (ftKB)	Length (ft)								
Production - 17# L80		5 1/2	L-80	17.00	3,516.0	3,534.01								
Swabs														
11/29/2007 07:00														
Date	Zone	Total Oil (bbl)	Total Water (bbl)	Total Vol (bbl)	Swab Company									
11/29/2007 07:00	PERCHA /SH/ (WOODFORD SHALE) - 3,353.0', Original Hole	0.0	2.8	2.8	RELIABLE									
Comment														
Swab Details														
Start Time	#	Int Fl LM (ftKB)	Choke Sz (in)	P (psi)	P (cas) (psi)	% H2O (%)	Recov (bbl)	Fluid Meas.	Oil (bbl)	Water Amt (bbl)	Ld Left to Roc (bbl)	Rate Gas (mcf/day)	Gas Rate (Mscf)	Comment
07:00	1	3,100		0.0					0.0	0.0	34.0			SITP-0. IFL-3100'
08:00	2	3,300				100.0	1.5		0.0	1.5	32.5			DRY ON 2ND SWAB RUN.
09:00	1	3,250				100.0	0.3		0.0	0.3	32.3			NO SHOWS
10:00	1	3,250				100.0	0.3		0.0	0.3	32.0			"
11:00	1	3,300				100.0	0.0		0.0	0.0	32.0			"
12:00	1	3,250				100.0	0.3		0.0	0.3	31.8			"
13:00	1	3,300				100.0	0.0		0.0	0.0	31.8			"
14:00	1	3,250				100.0	0.3		0.0	0.3	31.5			SMELL GAS IN SAMPLE
15:00	1	3,300				100.0	0.0		0.0	0.0	31.5			"
16:00	1	3,250				100.0	0.3		0.0	0.3	31.3			"
17:00	1	3,300				100.0	0.0		0.0	0.0	31.3			DRY, SWI SD.



Yates Daily Completion Report

UNIVERSITY DEVIL WOMAN L5 #1

Day # 6

Report # 41.0, Report Date: 12/3/2007

API/UWI 4222930253		Surface Legal Location TX RRC DIST 8/SURV UL/ABS NAB/L/SEC 5		County HUDSPETH	State TEXAS	Operator TRAIL MOUNTAIN, INC.
N/S Dist (ft) 660.0	North/South Reference FSL	East/West Distance (ft) 660.0	East/West Reference FEL	Ground Elevation (ft) 4,006.00	KB-Ground Distance (ft) 8.00	
AFE Number 073960	Job Category New Drilling	Primary Job Type New Well	Department Drilling & Completions	Total AFE Amount 1,016,550.00		
Phases						
Phase Type 1				Actual Phase Cost		
DRILLING				454,535.36		
COMPLETION				133,905.00		
Daily Operations						
Day No. 6	Report Start Date 12/3/2007 07:00	Report End Date 12/3/2007 17:00	Formation at Report Time WOODFORD /SH/	Lithology SHALE	Daily Report Summary ATTEMPT FRAC, W.O. ACID, FRAC.	
Operations Next Report Period FLOW FRAC BACK.						
Daily Cost Total 83,040.00		Actual Phase Cost 133,905.00		Cum Cost To Date 588,440.36		
Daily Contacts						
Job Contact WADE WHITE, COMPLETIONS FOREMAN				Phone Mobile 575-703-2565		
Job Contact MIKE HILL, ENGINEER				Phone Mobile 575-365-8706		
Job Contact DAVID PROSE, GEOLOGIST				Phone Mobile 817-937-3229		
Job Contact ROB BULLOCK, LANDMAN				Phone Mobile		
Time Log						
Start Time	End Time	Dur. (hrs)	Time Code	Comment		
07:00	10:00	3.00	RIG UP FRAC EQUIPMENT	SITP-10. RU HALLIBURTON. ATTEMPT TO PUMP FRAC INTO PERFS 3385' TO 3410'. UNABLE TO PUMP INTO FORMATION AT HIGH ENOUGH RATES TO FRAC WELL. PUMP 145 BBLs INTO FORMATION AT 17 BPM AND DOWN TO 1 BPM AT 5000 PSI. CALL FOR ACID. TIH W/ SINKER BAR TO A DEPTH OF 3420'. PERFS OPEN. TOH. SPEARHEAD 1500 GAL 7 1/2% HCL ACID AHEAD OF FRAC. (FORMATION BROKE DOWN W/ ACID). FRAC PERFS 3385' TO 3410' (151) W/ A WATER FRAC, 949 BBLs FLUID, 1500# 100 MESH WHITE SAND IN CONC. OF .25# TO .50 # SAND, 28,360# 40/70 WHITE SAND IN CONC. OF .25# TO 2.5 # SAND. BROKE-OPEN, AVG-23 BPM, AVG-2035 PSI, ISDP-429, 15MIN-155 PSI, TLTR-949 BBLs. SWI. RD HALLIBURTON. FLOW 2 BBLs FLUID. WELL ON VACUUM. SWI SD.		
10:00	12:00	2.00	FRAC JOB			
12:00	15:00	3.00	WAITING ON EQUIPMENT			
15:00	17:00	2.00	FRAC JOB			
Daily Costs						
Cost Description		Cost Details		Cost	Vendor	
Completion Unit				4,500.00	RELIABLE	
Tools & Equip. Rental, Etc. - Completions		Safety Equipment		115.00	ALLIANCE	
Supervision & O/H - Completion				300.00	YPC	
Tools & Equip. Rental, Etc. - Completions		Other Rentals		230.00	PIMA	
Tools & Equip. Rental, Etc. - Completions		Other Rentals		680.00	DOUBLE D	
Tools & Equip. Rental, Etc. - Completions		Tanks		750.00	TWO-STATE EQUIPMENT, INC.	
Tools & Equip. Rental, Etc. - Completions		BOP		50.00	WRH	
Water for Completion				72,070.00	TCB	
Stimulation for Completion					HALLIBURTON ENERGY SERVICES	
Tools & Equip. Rental, Etc. - Completions		Pump Truck		1,200.00	JIM'S WATER SERVICE	
Stimulation for Completion				3,145.00	PROTECHNICS	
Rigs						
Rig Contractor RELIABLE	Rig Type WSU - Completion Rig	Rig No.	Rig Supervisor	Rig Start Date 11/25/2007 07:00	Rig Release Date	
Perforation Statuses						
Open - Testing, 11/28/2007 14:00						
Date 11/28/2007	Zone PERCHA /SH/ (WOODFORD SHALE) - 3,353.0', Original Hole	Depth Top (ftKB) 3,385.0	Depth Btm (ftKB) 3,410.0	Status Open - Testing		
Tubing - Production set at 3,135.0ftKB on 11/28/2007 14:00						
Tubing Description Tubing - Production	Set Depth (ftKB) 3,135.0	OD (in) 2 7/8	WT (lbs/ft) 6.50	String Length (ft) 3,127.00	String Grade J-55	Pull Date
Tubing Components						
Jts	Item Description	OD (in)	ID (in)	Grade	Top (ftKB)	Cum Len (ft)
95	Tubing	2 7/8	2.441	J-55	8.0	3,127.00
	Seal Nipple	2 7/8	2.250		3,128.0	7.00
	AS-1 PKR	5 1/2	2.441		3,129.0	6.00
Casing Strings						
Casing Description Surface - 24# J55	OD (in) 8 5/8	String Grade J-55	WT (lbs/ft) 24.00	Set Depth (ftKB) 179.0	Length (ft) 171.77	
Casing Description Production - 17# L80	OD (in) 5 1/2	String Grade L-80	WT (lbs/ft) 17.00	Set Depth (ftKB) 3,516.0	Length (ft) 3,534.01	
Stimulations & Treatments						
Frac on 12/3/2007 07:00						
Date 12/3/2007 07:00	Zone PERCHA /SH/ (WOODFORD SHALE) - 3,353.0', Original Hole	Type IFrac	Diversion Method Proppant	Stim/Treat Company HALLIBURTON		



Yates Daily Completion Report

UNIVERSITY DEVIL WOMAN L5 #1

Day # 6

Report # 41.0, Report Date: 12/3/2007

Well Direction: VERTICAL - Original Hole: 12/3/2007 5:0										
Stage #1										
Stage Number	Stage Type	Fluid	V clean (gal)	Top (ftKB)	Bottom (ftKB)	ISDP (psi)	15 Min SIP (psi)			
1	Frac	GELLED WATER	39858	3,385.0	3,410.0	429.0	155.0			
P (break) (psi)	Q (inl fld) (gpm)	Avg Ff Rate (b...	Q (gas) (ft³/min)	Gas Type	V (gas) (mcf)	Pressure Tubi...	Pressure Cost...	Load to Recover ...		
	23					2,035.0		949.0		
Additive	Type	Amount	Units	Conc (lb/gal)	Sand Size	Note				
7 1/2% HCL ACID		1,500.0	gal	0.25	40/70					
Additive	Type	Amount	Units	Conc (lb/gal)	Sand Size	Note				
BC-140		24.0	gal	0.00	"					
Additive	Type	Amount	Units	Conc (lb/gal)	Sand Size	Note				
CLASTA XP		48.0	gal	0.00	"					
Additive	Type	Amount	Units	Conc (lb/gal)	Sand Size	Note				
FR-56		49.0	gal	0.00	"					
Additive	Type	Amount	Units	Conc (lb/gal)	Sand Size	Note				
GASPERM 1000		64.0	gal	0.00	"					
Additive	Type	Amount	Units	Conc (lb/gal)	Sand Size	Note				
HPH BREAKER		19.0	gal	0.00	"					
Additive	Type	Amount	Units	Conc (lb/gal)	Sand Size	Note				
LGC-36		218.0	gal	0.00	"					
Additive	Type	Amount	Units	Conc (lb/gal)	Sand Size	Note				
OPTIFLO HTE		35.0	gal	0.00	"					
Additive	Type	Amount	Units	Conc (lb/gal)	Sand Size	Note				
OPTIKLEEN-WF		2.0	lb	0.00	"					

135

135

150

177

179

200

445

3,000

3,128

3,129

3,135

3,385

3,410

3,470

3,492

3,493

3,514

3,516

Original Hole, 12 1/4, 8-179

Original Hole, 7 7/8, 179-3,516

Seal Nipple, 2 7/8, 2,250, 3,128, 1.0

AS-1 PKR, 5 1/2, 2,441, 3,129, 6.0

Perforated, 3,385-3,410, 11/28/2007 7% KCL H2O, 3,385-3,410, 11/28/2007

PBTD, 3,470, 11/27/2007

TD, 3,516, 11/11/2007

Tubing, 2 7/8, 2,441, 8, 3,120.0

GISCO, PENNSYLVANIA HELMS (BARNETT SHALE), 2,800

BERCHA/SH- WOODFORD SHALE, 3,353

DE 1D, UN, 3,432



Yates Daily Completion Report

UNIVERSITY DEVIL WOMAN L5 #1

Day # 7

Report # 42.0, Report Date: 12/4/2007

Hole Direction: VERTICAL - Original Hole, 12/4/2007 5:0		API/OWI	Surface Legal Location		County	State	Operator
Hole (MD)		4222930253	TX RRC DIST 8/SURV UL/ABS NA/BL L/SEC 5		HUDSPETH	TEXAS	TRAIL MOUNTAIN, INC.
Schematic - Actual		From Final	N/S Dist (ft)		North/South Reference	East/West Distance (ft)	East/West Reference
18			660.0		FSL	660.0	FEL
0			AFE Number		Job Category	Primary Job Type	Department
7			073960		New Drilling	New Well	Drilling & Completions
8			Total AFE Amount		1,016,550.00		
Phases							
Phase Type 1				Actual Phase Cost			
DRILLING				454,535.36			
COMPLETION				142,080.00			
Daily Operations							
Day No.	Report Start Date	Report End Date	Formation at Report Time	Lithology	Daily Report Summary		
7	12/4/2007 07:00	12/4/2007 17:00	WOODFORD /SH/	SHALE	SWAB, TOH, TIH, CIRC. SAND.		
Operations Next Report Period							
SWAB TEST.							
Daily Cost Total		Actual Phase Cost		Cum Cost To Date			
8,175.00		142,080.00		596,615.36			
Daily Contacts							
Job Contact				Phone Mobile			
WADE WHITE, COMPLETIONS FOREMAN				575-703-2565			
Job Contact				Phone Mobile			
MIKE HILL, ENGINEER				575-365-8706			
Job Contact				Phone Mobile			
DAVID PROSE, GEOLOGIST				817-937-3229			
Job Contact				Phone Mobile			
ROB BULLOCK, LANDMAN							
Time Log							
Start Time	End Time	Dur (hrs)	Time Code	Comment			
07:00	09:00	2.00	WELL TEST	SITP-0. (VACUUM) SEE SWAB REPORT. LAST SWAB RUN SHOWED LARGE AMOUNTS OF SAND IN FLUID. RELEASE PKR AT 3135'. TOH W/ TBG AND PKR. TIH W/ A 2 7/8" NOTCHED COLLAR, S.N., 2 7/8" TBG AND TAGGED SAND AT 3390'. (11 BBLs TO CATCH CIRCULATION) CIRCULATE SAND FROM 3390' TO 3475'. CIRCULATE HOLE CLEAN. PULL ABOVE PERFS W/ S.N. TO A DEPTH OF 3129'. SWI SD. PREP TO SWAB TEST.			
09:00	13:00	4.00	TRIPPING				
13:00	16:00	3.00	CIRCULATE HOLE				
16:00	17:00	1.00	TRIPPING				
Daily Costs							
Cost Description		Cost Details		Cost	Vendor		
Completion Unit		Safety Equipment		4,400.00	RELIABLE		
Tools & Equip. Rental, Etc. - Completions		Supervision & O/H - Completion		115.00	ALLIANCE		
Tools & Equip. Rental, Etc. - Completions		Other Rentals		300.00	YPC		
Tools & Equip. Rental, Etc. - Completions		Other Rentals		230.00	PIMA		
Tools & Equip. Rental, Etc. - Completions		Tanks		680.00	DOUBLE D		
Tools & Equip. Rental, Etc. - Completions		BOP		750.00	TWO-STATE EQUIPMENT, INC.		
Tools & Equip. Rental, Etc. - Completions		Water for Completion		50.00	WRH		
Tools & Equip. Rental, Etc. - Completions		Pump Truck		1,200.00	JIM'S WATER SERVICE		
Tools & Equip. Rental, Etc. - Completions		Other Rentals		450.00	ABC RENTALS		
Rigs							
Rig Contractor	Rig Type	Rig No.	Rig Supervisor	Rig Start Date	Rig Release Date		
RELIABLE	WSU - Completion Rig			11/25/2007 07:00			
Perforation Statuses							
Open - Testing, 11/28/2007 14:00							
Date	Zone	Depth Top (ftKB)	Depth Bot (ftKB)	Status			
11/28/2007	PERCHA /SH/ (WOODFORD SHALE) - 3,353.0', Original Hole	3,385.0	3,410.0	Open - Testing			
Tubing - Production set at 3,135.0ftKB on 11/28/2007 14:00							
Tubing Description		Set Depth (ftKB)	OD (in)	WT (lbs/ft)	String Length (ft)	String Grade	Pull Date
Tubing - Production		3,135.0	2 7/8	6.50	3,127.00	J-55	12/4/2007 12:00
Tubing Components							
Jts	Item Description	OD (in)	ID (in)	Grade	Top (ftKB)	Cum Len (ft)	
95	Tubing	2 7/8	2.441	J-55	8.0	3,127.00	
	Seal Nipple	2 7/8	2.250		3,128.0	7.00	
	AS-1 PKR	5 1/2	2.441		3,129.0	6.00	
Tubing - Production set at 3,129.0ftKB on 12/4/2007 15:00							
Tubing Description		Set Depth (ftKB)	OD (in)	WT (lbs/ft)	String Length (ft)	String Grade	Pull Date
Tubing - Production		3,129.0	2 7/8	6.50	3,121.00	J-55	
Tubing Components							
Jts	Item Description	OD (in)	ID (in)	Grade	Top (ftKB)	Cum Len (ft)	
95	Tubing	2 7/8	2.441	J-55	8.0	3,121.00	
	Seal Nipple	2 7/8	2.250		3,127.5	1.50	
	Notched collar	2 7/8	2.441		3,128.5	0.50	
Casing Strings							
Casing Description		OD (in)	String Grade	WT (lbs/ft)	Set Depth (ftKB)	Length (ft)	
Surface - 24# J55		8 5/8	J-55	24.00	179.0	171.77	
Casing Description		OD (in)	String Grade	WT (lbs/ft)	Set Depth (ftKB)	Length (ft)	
Production - 17# I.80		5 1/2	L-80	17.00	3,516.0	3,534.01	
Swabs							
12/4/2007 07:00							
Date	Zone	Total Oil (bbl)	Total Water (L)	Total Vol (bbl)	Swab Company		
12/4/2007 07:00	PERCHA /SH/ (WOODFORD SHALE) - 3,353.0', Original Hole	0.0	32.0	32.0	RELIABLE		
Comment							



Yates Daily Completion Report

UNIVERSITY DEVIL WOMAN L5 #1

Day # 7

Report # 42.0, Report Date: 12/4/2007

Flow Direction: VERTICAL - Original Hole, 12/4/2007 5.0			Swab Details														
Flow (MD)	Schematic - Actual	From/To	Start Time	# R...	Init Fl Lvl (HKB)	Choke Sz (in)	P (hub) (psi)	P (cas) (psi)	% H2O (%)	Recov (bbl)	Fluid Mea...	Oil (bbl)	Water Amt (bbl)	Ld Left to Rec (bbl)	Rate Gas (mcf/day)	Gas Rate Mea...	Comment
-18			07:00		600		0.0						0.0	0.0	947.0		IFL-600'
			08:00	2	800				100.0	12.0			0.0	12.0	935.0		H2O
			09:00	3	900				100.0	20.0			0.0	20.0	915.0		H2O, SAND ON LAST SWAB RUN.
0																	
7																	
8																	
135																	
135																	
150																	
177																	
179																	
200																	
445																	
3,030	Original Hole, 7 7/8, 179-3,516	Tubing, 2 7/8, 2,441, 8, 3,119.5 CISCO, PENNSYLVANIA, HELMS (BARNETT SHALE), 2,800															
3,128		Seat Nipple, 2 7/8, 2,250, 3,128, 1.0															
3,129		Notched collar, 2 7/8, 2,441, 3,129, 0.5															
3,129																	
3,385	Perforated, 3,385-3,410, 11/28/2007 7% KCL H2O, 3,385-3,410, 11/28/2007	PERCHAS/SH WOODFORD SHALE), 3,363															
3,410		DE 1D, W, 3,432															
3,470	PBYD, 3,470, 11/27/2007																
3,492																	
3,493																	
3,514																	
3,516		TD, 3,516, 11/11/2007															



Yates Daily Completion Report

UNIVERSITY DEVIL WOMAN L5 #1

Day # 8

Report # 43.0, Report Date: 12/5/2007

AP/UVI		Surface Legal Location		County	State	Operator								
4222930253		TX RRC DIST 8/SURV UL/ABS NA/BL L/SEC 5		HUDSPETH	TEXAS	TRAIL MOUNTAIN, INC.								
N/S Dist (ft)		North/South Reference	East/West Distance (ft)	East/West Reference	Ground Elevation (ft)	KB-Ground Distance (ft)								
660.0		FSL	660.0	FEL	4,006.00	8.00								
AFE Number		Job Category	Primary Job Type	Department	Total AFE Amount									
073960		New Drilling	New Well	Drilling & Completions	1,016,550.00									
Phases														
Phase Type 1				Actual Phase Cost										
DRILLING				454,535.36										
COMPLETION				172,918.00										
Daily Operations														
Day No.	Report Start Date	Report End Date	Formation at Report Time	Lithology	Daily Report Summary									
8	12/5/2007 07:00	12/5/2007 17:00	WOODFORD /SH/	SHALE	SWAB TEST.									
Operations Next Report Period			Remarks											
SWAB TEST.														
Daily Cost Total		Actual Phase Cost		Cum Cost To Date										
30,838.00		172,918.00		627,453.36										
Daily Contacts														
Job Contact		Phone Mobile												
WADE WHITE, COMPLETIONS FOREMAN		575-703-2565												
Job Contact		Phone Mobile												
MIKE HILL, ENGINEER		575-365-8706												
Job Contact		Phone Mobile												
DAVID PROSE, GEOLOGIST		817-937-3229												
Job Contact		Phone Mobile												
ROB BULLOCK, LANDMAN														
Time Log														
Start Time	End Time	Dur (hrs)	Time Code	Comment										
07:00	17:00	10.00	WELL TEST	SITP-0. SEE SWAB REPORT.										
Daily Costs														
Cost Description		Cost Details		Cost	Vendor									
Completion Unit				4,200.00	RELIABLE									
Tools & Equip. Rental, Etc. - Completions		Safety Equipment		115.00	ALLIANCE									
Supervision & O/H - Completion				300.00	YPC									
Tools & Equip. Rental, Etc. - Completions		Other Rentals		230.00	PIMA									
Tools & Equip. Rental, Etc. - Completions		Other Rentals		30.00	DOUBLE D									
Tools & Equip. Rental, Etc. - Completions		Tanks		750.00	TWO-STATE EQUIPMENT, INC.									
Tools & Equip. Rental, Etc. - Completions		BOP		50.00	WRH									
Water for Completion				TCB										
Tools & Equip. Rental, Etc. - Completions		Other Rentals		25,163.00	HALLIBURTON ENERGY (KCL)									
Rigs														
Rig Contractor		Rig Type	Rig No.	Rig Supervisor	Rig Start Date	Rig Release Date								
RELIABLE		WSU - Completion Rig			11/25/2007 07:00									
Perforation Statuses														
Open - Testing, 11/28/2007 14:00														
Date	Zone	Depth Top (ftKB)	Depth Btm (ftKB)	Status										
11/28/2007	PERCHA /SH/ (WOODFORD SHALE) - 3,353.0', Original Hole	3,385.0	3,410.0	Open - Testing										
Tubing - Production set at 3,129.0ftKB on 12/4/2007 15:00														
Tubing Description		Set Depth (ftKB)	OD (in)	WT (lbs/ft)	String Length (ft)	String Grade								
Tubing - Production		3,129.0	2 7/8	6.50	3,121.00	J-55								
Tubing Components														
Jts	Item Description	OD (in)	ID (in)	Grade	Top (ftKB)	Cum Len (ft)								
95	Tubing	2 7/8	2.441	J-55	8.0	3,121.00								
	Seal Nipple	2 7/8	2.250		3,127.5	1.50								
	Notched collar	2 7/8	2.441		3,128.5	0.50								
Casing Strings														
Casing Description		OD (in)	String Grade	WT (lbs/ft)	Set Depth (ftKB)	Length (ft)								
Surface - 24# J55		8 5/8	J-55	24.00	179.0	171.77								
Casing Description		OD (in)	String Grade	WT (lbs/ft)	Set Depth (ftKB)	Length (ft)								
Production - 17# L80		5 1/2	L-80	17.00	3,516.0	3,534.01								
Swabs														
12/5/2007 07:00														
Date	Zone	Total Oil (bbl)	Total Water (bbl)	Total Vol (bbl)	Swab Company									
12/5/2007 07:00	PERCHA /SH/ (WOODFORD SHALE) - 3,353.0', Original Hole	0.0	290.0	290.0	RELIABLE									
Comment														
Swab Details														
Start Time	# R...	Init FLM (ftKB)	Choke Sz (in)	P (psi)	P (cas) (psi)	% H2O (%)	Recov (bbl)	Fluid Meas...	Oil (bbl)	Water Amt (bbl)	Ld Left to Rec (bbl)	Rate Gas (mcf/day)	Gas Rate Mes...	Comment
07:00	3	600		0.0					0.0	0.0	915.0			IFL-600'
08:00	3					100.0	23.0		0.0	23.0	892.0			H2O, NO SHOWS
09:00	4					100.0	30.0		0.0	30.0	862.0			"
10:00	4					100.0	32.0		0.0	32.0	830.0			"
11:00	5					100.0	33.0		0.0	33.0	797.0			"
12:00	5					100.0	34.0		0.0	34.0	763.0			"
13:00	4					100.0	26.0		0.0	26.0	737.0			"
14:00	4					100.0	26.0		0.0	26.0	711.0			"
15:00	5					100.0	30.0		0.0	30.0	681.0			"
16:00	4					100.0	28.0		0.0	28.0	653.0			"



Yates Daily Completion Report

UNIVERSITY DEVIL WOMAN L5 #1

Day # 8

Report # 43.0, Report Date: 12/5/2007

Hole Direction: VERTICAL - Original Hole, 12/5/2007, 5.0

(ft)

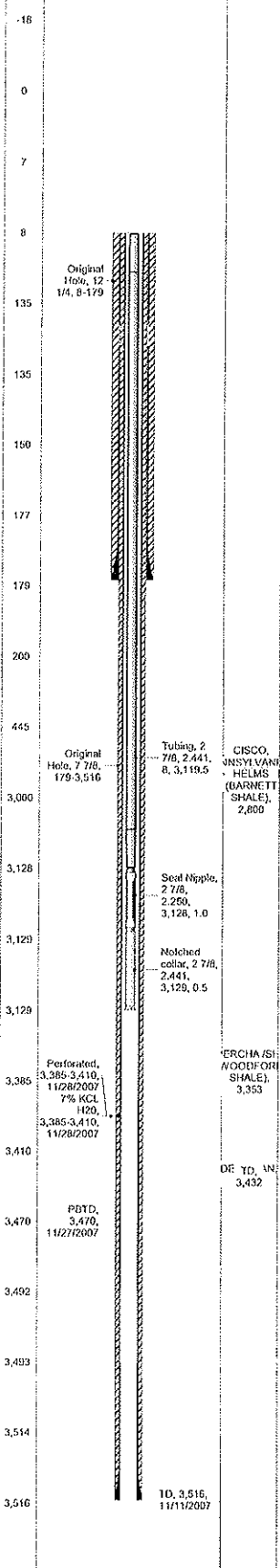
(MD)

Schematic - Actual

From Final

Swab Details

Start Time	# R...	Init Fl Lvl (HKB)	Choke Sz (in)	P (tub) (psi)	P (gas) (psi)	% H2O (%)	Recov (bbl)	Fluid Mea...	Oil (bbl)	Water Amt (bbl)	Ld Left to Rec (bbl)	Rate Gns (mch/day)	Gas Rate Mea...	Comments
17:00	4					100.0	28.0		0.0	28.0	625.0			H2O, NO SHOWS, SWI SD.





Yates Daily Completion Report

UNIVERSITY DEVIL WOMAN L5 #1

Day # 10

Report # 45.0, Report Date: 12/7/2007

Hole Direction: VERTICAL - Original Hole, 12/7/2007 5:0		API/UWI	Surface Legal Location		County	State	Operator							
NKB (MD)		Schedule - Actual	Perm Final	4222930253	TX RRC DIST 8/SURV UL/ABS	HUDSPETH	TEXAS	TRAIL MOUNTAIN, INC.						
					NA/BL L/SEC 5									
		N/S Dist (ft)	North/South Reference	East/West Distance (ft)	East/West Reference	Ground Elevation (ft)	KB-Ground Distance (ft)							
		660.0	FSL	660.0	FEL	4,006.00	8.00							
		AFE Number	Job Category	Primary Job Type	Department	Total AFE Amount								
		073960	New Drilling	New Well	Drilling & Completions	1,016,550.00								
Phases														
Phase Type 1														
Actual Phase Cost														
DRILLING														
COMPLETION														
454,535.36														
191,543.00														
Daily Operations														
Day No.	Report Start Date	Report End Date	Formation at Report Time	Lithology	Daily Report Summary									
10	12/7/2007	12/7/2007	WOODFORD /SH/	SHALE	SWAB TEST.									
07:00		17:00												
Operations Next Report Period														
SWAB TEST.														
Remarks														
Daily Cost Total														
5,675.00														
Actual Phase Cost														
191,543.00														
Cum Cost To Date														
639,903.36														
Daily Contacts														
Job Contact														
WADE WHITE, COMPLETIONS FOREMAN														
Phone Mobile														
575-703-2565														
Job Contact														
MIKE HILL, ENGINEER														
Phone Mobile														
575-365-8706														
Job Contact														
DAVID PROSE, GEOLOGIST														
Phone Mobile														
817-937-3229														
Job Contact														
ROB BULLOCK, LANDMAN														
Phone Mobile														
Time Log														
Start Time	End Time	Dur (hrs)	Time Code	Comment										
07:00	17:00	10.00	WELL TEST	SITP-25. SICP-40. SEE SWAB REPORT.										
Daily Costs														
Cost Description														
Cost Details														
Cost														
Vendor														
Completion Unit														
4,200.00														
RELIABLE														
Tools & Equip. Rental, Etc. - Completions														
Safety Equipment														
115.00														
ALLIANCE														
Supervision & O/H - Completion														
300.00														
YPC														
Tools & Equip. Rental, Etc. - Completions														
Other Rentals														
230.00														
PIMA														
Tools & Equip. Rental, Etc. - Completions														
Other Rentals														
30.00														
DOUBLE D														
Tools & Equip. Rental, Etc. - Completions														
Tanks														
750.00														
TWO-STATE EQUIPMENT, INC.														
Tools & Equip. Rental, Etc. - Completions														
BOP														
50.00														
WRH														
Water for Completion														
TCB														
Rigs														
Rig Contractor	Rig Type	Rig No.	Rig Supervisor	Rig Start Date	Rig Release Date									
CISCO, JNSYLVANIAN HELMS (BARRETT SHALE), 2,809	WSU - Completion Rig			11/25/2007	07:00									
Perforation Statuses														
Open - Testing, 11/28/2007 14:00														
Date	Zone	Depth Top (ftKB)	Depth Btm (ftKB)	Status										
11/28/2007	PERCHA /SH/ (WOODFORD SHALE) - 3,353.0', Original Hole	3,385.0	3,410.0	Open - Testing										
Tubing - Production set at 3,129.0ftKB on 12/4/2007 15:00														
Tubing Description														
Set Depth (ftKB)														
OD (in)														
WT (lbs/ft)														
String Length (ft)														
String Grade														
Full Date														
Tubing - Production														
3,129.0														
2 7/8														
6.50														
3,121.00														
J-55														
Tubing Components														
Jts	Item Description	OD (in)	ID (in)	Grade	Top (ftKB)	Cum Len (ft)								
95	Tubing	2 7/8	2.441	J-55	8.0	3,121.00								
	Seal Nipple	2 7/8	2.250		3,127.5	1.50								
	Notched collar	2 7/8	2.441		3,128.5	0.50								
Casing Strings														
Casing Description														
OD (in)														
String Grade														
WT (lbs/ft)														
Set Depth (ftKB)														
Length (ft)														
Surface - 24# J55														
8 5/8														
J-55														
24.00														
179.0														
171.77														
Casing Description														
OD (in)														
String Grade														
WT (lbs/ft)														
Set Depth (ftKB)														
Length (ft)														
Production - 17# L80														
5 1/2														
L-80														
17.00														
3,516.0														
3,534.01														
Swabs														
12/7/2007 07:00														
Date	Zone	Total Oil (bbl)	Total Water (L)	Total Vol (bbl)	Swab Company									
12/7/2007 07:00	PERCHA /SH/ (WOODFORD SHALE) - 3,353.0', Original Hole	0.0	285.0	285.0	RELIABLE									
Comment														
Swab Details														
Start Time	#	ft Lvl (ftKB)	Choke Sz (in)	P (psi)	P (cas) (psi)	% H2O (%)	Recov (bbl)	Fluid Men	Oil (bbl)	Water Amt (bbl)	Ld Left to Rec (bbl)	Rate Gas (mcf/day)	Gas Rate (mcf/day)	Comment
07:00		500		25.0	40.0				0.0	0.0	295.0			IFL-500'
08:00									0.0	0.0	295.0			POOR NEW ROPE SOCKET.
09:00	2	700				100.0	13.0		0.0	13.0	282.0			H2O-NO SHOWS
10:00	5	900				100.0	35.0		0.0	35.0	247.0			
11:00	5	1,100				100.0	34.0		0.0	34.0	213.0			
12:00	5	1,200				100.0	34.0		0.0	34.0	179.0			
13:00	5	1,300				100.0	33.0		0.0	33.0	146.0			
14:00	5	1,300				100.0	34.0		0.0	34.0	112.0			
15:00	5	1,300				100.0	34.0		0.0	34.0	78.0			
16:00	5	1,300				100.0	34.0		0.0	34.0	44.0			



Yates Daily Completion Report

UNIVERSITY DEVIL WOMAN L5 #1

Day # 11

Report # 46.0, Report Date: 12/8/2007

Hole Direction: VERTICAL - Original Hole, 12/8/2007 5:00		API/WVI	Surface Legal Location		County	State	Operator							
Hole (MD)		Schedule - Actual	Final	4222930253	TX RRC DIST 8/SURV UL/ABS NA/BL L/SEC 5	HUDSPETH	TEXAS	TRAIL MOUNTAIN, INC.						
N/S Dist (ft)		North/South Reference		East/West Distance (ft)	East/West Reference	Ground Elevation (ft)	KB-Ground Distance (ft)							
660.0		FSL		660.0	FEL	4,006.00	8.00							
AFE Number		Job Category		Primary Job Type		Department	Total AFE Amount							
073960		New Drilling		New Well		Drilling & Completions	1,016,550.00							
Phases														
Phase Type 1					Actual Phase Cost									
DRILLING					454,535.36									
COMPLETION					191,543.00									
Daily Operations														
Day No.	Report Start Date	Report End Date	Formation at Report Time	Lithology	Daily Report Summary									
11	12/8/2007 07:00	12/8/2007 17:00	WOODFORD /SH/	SHALE	SWAB TEST.									
Operations Next Report Period					Remarks									
SWAB TEST.														
Daily Cost Total		Actual Phase Cost		Cum Cost To Date										
6,175.00		191,543.00		646,078.36										
Daily Contacts														
Job Contact					Phone Mobile									
WADE WHITE, COMPLETIONS FOREMAN					575-703-2565									
Job Contact					Phone Mobile									
MIKE HILL, ENGINEER					575-365-8706									
Job Contact					Phone Mobile									
DAVID PROSE, GEOLOGIST					817-937-3229									
Job Contact					Phone Mobile									
ROB BULLOCK, LANDMAN														
Time Log														
Start Time	End Time	Dur (hrs)	Time Code	Comment										
07:00	17:00	10.00	WELL TEST	SITP-15, SICP-25. SEE SWAB REPORT.										
Daily Costs														
Cost Description			Cost Details		Cost	Vendor								
Completion Unit					4,700.00	RELIABLE								
Tools & Equip. Rental, Etc. - Completions			Safety Equipment		115.00	ALLIANCE								
Supervision & O/H - Completion					300.00	YPC								
Tools & Equip. Rental, Etc. - Completions			Other Rentals		230.00	PIMA								
Tools & Equip. Rental, Etc. - Completions			Other Rentals		30.00	DOUBLE D								
Tools & Equip. Rental, Etc. - Completions			Tanks		750.00	TWO-STATE EQUIPMENT, INC.								
Tools & Equip. Rental, Etc. - Completions			BOP		50.00	WRH								
Water for Completion						TCB								
Rigs														
Rig Contractor		Rig Type	Rig No.	Rig Supervisor	Rig Start Date	Rig Release Date								
RELIABLE		WSU - Completion Rig			11/25/2007 07:00									
Perforation Statuses														
Open - Testing, 11/28/2007 14:00														
Date	Zone	Depth Top (ftKB)	Depth Bin (ftKB)	Status										
11/28/2007	PERCHA /SH/ (WOODFORD SHALE) - 3,353.0', Original Hole	3,385.0	3,410.0	Open - Testing										
Tubing - Production set at 3,129.0ftKB on 12/4/2007 15:00														
Tubing Description		Set Depth (ftKB)	OD (in)	WT (lb/ft)	String Length (ft)	String Grade	Pull Date							
Tubing - Production		3,129.0	2 7/8	6.50	3,121.00	J-55								
Tubing Components														
Jts	Item Description	OD (in)	ID (in)	Grade	Top (ftKB)	Cum Len (ft)								
95	Tubing	2 7/8	2.441	J-55	8.0	3,121.00								
	Seat Nipple	2 7/8	2.250		3,127.5	1.50								
	Notched collar	2 7/8	2.441		3,128.5	0.50								
Casing Strings														
Casing Description		OD (in)	String Grade	WT (lb/ft)	Set Depth (ftKB)	Length (ft)								
Surface - 24# J55		8 5/8	J-55	24.00	179.0	171.77								
Casing Description		OD (in)	String Grade	WT (lb/ft)	Set Depth (ftKB)	Length (ft)								
Production - 17# L80		5 1/2	L-80	17.00	3,516.0	3,534.01								
Swabs														
12/8/2007 07:00														
Date	Zone	Total Oil (bbl)	Total Water (bbl)	Total Vol (bbl)	Swab Company									
12/8/2007 07:00	PERCHA /SH/ (WOODFORD SHALE) - 3,353.0', Original Hole	0.0	338.0	338.0	RELIABLE									
Comment														
Swab Details														
Start Time	# R...	Init FTL (ft)	Choke Sz (in)	P (psi)	P (psig)	% H2O (%)	Recov (bbl)	Fluid Men...	Oil (bbl)	Water Amt (bbl)	Ld Left to Rec (bbl)	Rate Gas (mcf/day)	Gas Rate Mea...	Comment
07:00		400		15.0	25.0				0.0	0.0	10.0			IFL-400'
08:00	4	900				100.0	26.0		0.0	26.0	-16.0			H2O-NO SHOWS.
09:00	5	1,200				100.0	35.0		0.0	35.0	-51.0			"
10:00	5	1,200				100.0	35.0		0.0	35.0	-86.0			"
11:00	5	1,200				100.0	34.0		0.0	34.0	-120.0			"
12:00	5	1,200				100.0	35.0		0.0	35.0	-155.0			"
13:00	5	1,200				100.0	35.0		0.0	35.0	-190.0			"
14:00	5	1,200				100.0	35.0		0.0	35.0	-225.0			"
15:00	5	1,200				100.0	34.0		0.0	34.0	-259.0			"
16:00	5	1,200				100.0	34.0		0.0	34.0	-293.0			"



Yates Daily Completion Report

UNIVERSITY DEVIL WOMAN L5 #1

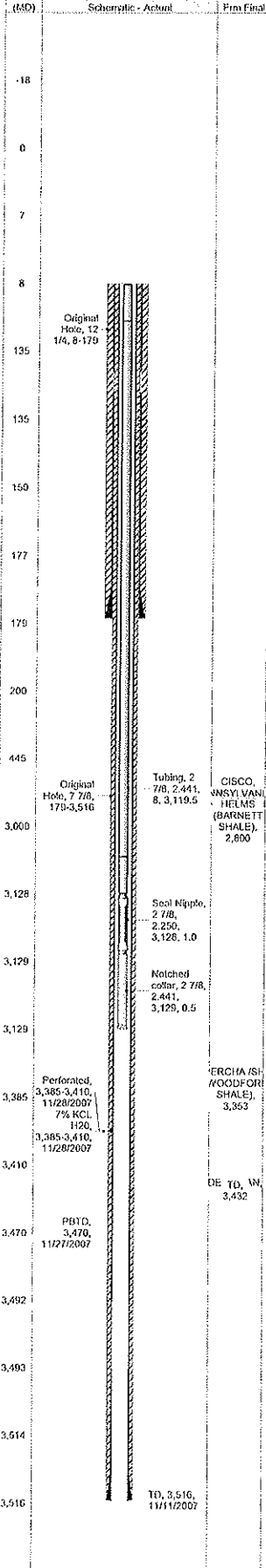
Day # 11

Report # 46.0, Report Date: 12/8/2007

Hole Direction: VERTICAL - Original Hole, 12/8/2007 5.0

Swab Details

Start Time	#	Init Fl Lvl (IKB)	Choke Sz (in)	P (bbl) (psi)	P (cas) (psi)	% H2O (%)	Recov (bbl)	Fluid Meas.	Oil (bbl)	Water Amt (bbl)	Ld Left to Rec (bbl)	Rate Gas (mcf/day)	Gas Rate Meas.	Comment
17:00	5	1,200				100.0	35.0		0.0	35.0	-328.0			H2O, NO SHOWS. SWI SD.





Yates Daily Completion Report

UNIVERSITY DEVIL WOMAN L5 #1

Day # 12

Report # 47.0, Report Date: 12/10/2007

Hole Direction: VERTICAL - Original Hole, 12/10/2007		API/URWI	Surface Legal Location		County	State	Operator
Hole (MD)		4222930253	TX RRC DIST 8/SURV UL/ABS NA/BL L/SEC 5		HUDSPETH	TEXAS	TRAIL MOUNTAIN, INC.
Schedule - Actual		Frm Final	N/S Dist (ft)	North/South Reference	East/West Distance (ft)	East/West Reference	Ground Elevation (ft)
			660.0	FSL	660.0	FEL	4,008.00
			AFE Number		Job Category	Primary Job Type	Department
			073960		New Drilling	New Well	Drilling & Completions
					Total AFE Amount		1,016,550.00
Phases							
Phase Type 1				Actual Phase Cost			
DRILLING				454,535.36			
COMPLETION				202,642.00			
Daily Operations							
Day No.	Report Start Date	Report End Date	Formation at Report Time	Lithology	Daily Report Summary		
12	12/10/2007	12/10/2007	WOODFORD /SH/	SHALE	LOG, TOH, TIH.		
	07:00	15:00					
Operations Next Report Period							
SQUEEZE PERFS.							
Remarks							
Daily Cost Total							
11,099.00				Actual Phase Cost		Cum Cost To Date	
				202,642.00		657,177.36	
Daily Contacts							
Job Contact				Phone Mobile			
WADE WHITE, COMPLETIONS FOREMAN				575-703-2565			
Job Contact				Phone Mobile			
MIKE HILL, ENGINEER				575-365-8706			
Job Contact				Phone Mobile			
DAVID PROSE, GEOLOGIST				817-937-3229			
Job Contact				Phone Mobile			
ROB BULLOCK, LANDMAN							
Time Log							
Start Time	End Time	Dur (hrs)	Time Code	Comment			
07:00	11:00	4.00	LOGGING	RU BWWL TIH W/ A GAMMA RAY LOGGING TOOL. RUN A GAMMA RAY/ CCL/ AFTER FRAC LOG FROM 3477' TO 1700'. NOTE: WELL TAGGED W/ IRIIDIUM. RDWL. TOH W/ 2 7/8" TBG. S.N. AND NOTCHED COLLAR. TIH W/ A 5 1/2" 17# WEATHERFORD RETAINER. 101-JTS 2 7/8" TBG. PUMP THROUGH RETAINER. SET RETAINER AT 3351'. TEST ANNULUS. HELD GOOD. SWI SD. PREP TO SQUEEZE.			
11:00	14:00	3.00	TRIPPING				
Daily Costs							
Cost Description		Cost Details		Cost	Vendor		
Completion Unit		Safety Equipment		3,400.00	RELIABLE		
Tools & Equip. Rental, Etc. - Completions				115.00	ALLIANCE		
Supervision & O/H - Completion				300.00	YPC		
Tools & Equip. Rental, Etc. - Completions		Other Rentals		230.00	PIMA		
Tools & Equip. Rental, Etc. - Completions		Other Rentals		2,850.00	DOUBLE D		
Tools & Equip. Rental, Etc. - Completions		Tanks		750.00	TWO-STATE EQUIPMENT, INC.		
Tools & Equip. Rental, Etc. - Completions		BOP		50.00	WRH		
Water for Completion					TCB		
Tools & Equip. Rental, Etc. - Completions		Pump Truck		950.00	JIM'S WATER SERVICE		
Wireline & Slickline & Perf.				2,454.00	BWWL		
Rigs							
Rig Contractor		Rig Type	Rig No.	Rig Supervisor		Rig Start Date	Rig Release Date
RELIABLE		WSU - Completion				11/25/2007	07:00
Tubing - Production set at 3,129.0ftKB on 12/4/2007 15:00							
Tubing Description		Set Depth (ftKB)	OD (in)	WT (lbs/ft)	String Length (ft)	String Grade	Pull Date
Tubing - Production		3,129.0	2 7/8	6.50	3,121.00	J-55	12/10/2007 12:00
Tubing Components							
Jts	Item Description	OD (in)	ID (in)	Grade	Top (ftKB)	Cum Len (ft)	
95	Tubing	2 7/8	2.441	J-55	8.0	3,121.00	
	Seal Nipple	2 7/8	2.250		3,127.5	1.50	
	Notched collar	2 7/8	2.441		3,128.5	0.50	
Tubing - Production set at 3,351.0ftKB on 12/10/2007 12:00							
Tubing Description		Set Depth (ftKB)	OD (in)	WT (lbs/ft)	String Length (ft)	String Grade	Pull Date
Tubing - Production		3,351.0	2 7/8	6.50	3,343.00	J-55	
Tubing Components							
Jts	Item Description	OD (in)	ID (in)	Grade	Top (ftKB)	Cum Len (ft)	
101	Tubing	2 7/8	2.441	J-55	8.0	3,343.00	
Other In Hole							
Description		Run Date	OD (in)	Top (ftKB)	Bin (ftKB)		
Cement Retainer		12/10/2007 13:00	5 1/2	3,351.0	3,355.0		
Casing Strings							
Casing Description		OD (in)	String Grade	WT (lbs/ft)	Set Depth (ftKB)	Length (ft)	
Surface - 24# J55		8 5/8	J-55	24.00	179.0	171.77	
Casing Description		OD (in)	String Grade	WT (lbs/ft)	Set Depth (ftKB)	Length (ft)	
Production - 17# L80		5 1/2	L-80	17.00	3,516.0	3,534.01	

Original Hole, 12 1/4, 8-179

Original Hole, 7 7/8, 179-3,516

Tubing, 2 7/8, 2,441, 8, 3,343.0

CISCO, PENNSYLVANIA HELIX (BARNETT SHALE), 2,800

Perforated, 3,385-3,410, 11/28/2007 7% KCL H2O, 3,385-3,410, 11/28/2007

PBTD, 3,470, 11/27/2007

DE TD, W 3,432

TD, 3,516, 11/11/2007



Yates Daily Completion Report

UNIVERSITY DEVIL WOMAN L5 #1

Day # 13

Report # 48.0, Report Date: 12/11/2007

Hole Direction: VERTICAL - Original Hole, 12/11/2007 4:18		API/UWI	Surface Legal Location		County	State	Operator
Hole (MD)		4222930253	TX RRC DIST 8/SURV UL/ABS		HUDSPETH	TEXAS	TRAIL MOUNTAIN, INC.
Schematic - Actual		From Final	NA/BL L/SEC 5				
N/S Dist (ft)		660.0	North/South Reference	East/West Distance (ft)	East/West Reference	Ground Elevation (ft)	KB-Ground Distance (ft)
			FSL	660.0	FEL	4,006.00	8.00
AFE Number		073960	Job Category	Primary Job Type	Department	Total AFE Amount	
			New Drilling	New Well	Drilling & Completions	1,016,550.00	
Phases							
Phase Type 1				Actual Phase Cost			
DRILLING				454,535.36			
COMPLETION				226,872.00			
Daily Operations							
Day No.	Report Start Date	Report End Date	Formation at Report Time	Lithology	Daily Report Summary		
13	12/11/2007 07:00	12/11/2007 16:00	WOODFORD /SH/	SHALE	SQUEEZE, TOH.		
Operations Next Report Period				Remarks			
W.O.C.							
Daily Cost Total		Actual Phase Cost		Cum Cost To Date			
24,230.00		226,872.00		681,407.36			
Daily Contacts							
Job Contact				Phone Mobile			
WADE WHITE, COMPLETIONS FOREMAN				575-703-2565			
Job Contact				Phone Mobile			
MIKE HILL, ENGINEER				575-365-8706			
Job Contact				Phone Mobile			
DAVID PROSE, GEOLOGIST				817-937-3229			
Job Contact				Phone Mobile			
ROB BULLOCK, LANDMAN							
Time Log							
Start Time	End Time	Dur (hrs)	Time Code	Comment			
07:00	12:00	5.00	CEMENT SQUEEZE	RU RISING STAR. SQUEEZE PERFS 3385' TO 3410' (151') W/ 200 SXS CLASS C W/ 4/10% C-16A, 7/10% 41P (FLUID LOSS), 200 SXS CLASS C W/ 2% CACL. STAGE CEMENT. SQUEEZE PERFS OFF AT 1500 PSI W/ NO PRESSURE LOSS. PUMP 385 SXS INTO FORMATION. STING OUT OF RETAINER. REVERSE 2 BBLs CMT TO PIT. CIRCULATE HOLE W/ KCL. TOH W/ TBG AND STINGER. SWI SD. PREP TO PERFORATE THURSDAY.			
12:00	13:00	1.00	CIRCULATE HOLE				
13:00	15:00	2.00	TRIPPING				
Daily Costs							
Cost Description		Cost Details		Cost	Vendor		
Completion Unit				4,000.00	RELIABLE		
Tools & Equip. Rental, Etc. - Completions		Safety Equipment		115.00	ALLIANCE		
Supervision & O/H - Completion				300.00	YPC		
Tools & Equip. Rental, Etc. - Completions		Other Rentals		230.00	PIMA		
Tools & Equip. Rental, Etc. - Completions		Other Rentals		680.00	DOUBLE D		
Tools & Equip. Rental, Etc. - Completions		Tanks		750.00	TWO-STATE EQUIPMENT, INC.		
Tools & Equip. Rental, Etc. - Completions		BOP		50.00	WRH		
Water for Completion					TCB		
Cementing, Tools & Serv. - Completion				18,105.00	RISING STAR		
Rigs							
Rig Contractor	Rig Type	Rig No.	Rig Supervisor	Rig Start Date	Rig Release Date		
RELIABLE	WSU - Completion			11/25/2007 07:00			
Tubing - Production set at 3,351.0ftKB on 12/10/2007 12:00							
Tubing Description	Set Depth (ftKB)	OD (in)	WT (lb/ft)	String Length (ft)	String Grade	Pull Date	
Tubing - Production	3,351.0	2 7/8	6.50	3,343.00	J-55	12/11/2007 14:00	
Tubing Components							
Jts	Item Description	OD (in)	ID (in)	Grade	Top (ftKB)	Cum Len (ft)	
101	Tubing	2 7/8	2.441	J-55	8.0	3,343.00	
Other In Hole							
Description	Run Date	OD (in)	Top (ftKB)	Btm (ftKB)			
Cement Retainer	12/10/2007 13:00	5 1/2	3,351.0	3,355.0			
Cement Plug/Squeeze							
Type	Cementing Company	Cementing Start Date	Cementing End Date	Evaluation Method			
squeeze	RISING STAR	12/11/2007 07:00	12/11/2007 14:00				
Stage Number	Top (ftKB)	Bottom (ftKB)	Max Sqz Press (psi)	Cmt Circ Rev (sac...)	Depth tagged (ftKB)		
200	3,385.0	3,410.0	1,500.0	400			
Amount (sacks)	Class	Yield (ft/sack)	Weight (lb/gal)	V (ft³)	Comment		
200	C	1.32	14.80		200 SXS W/ FLUID LOSS		
Additive		Amount	Amount Units	Conc Unit label	Concentration		
Fluid Loss Control		75.0	gal us				
Additive		Amount	Amount Units	Conc Unit label	Concentration		
Fluid Loss Control		264.0	lb				
Amount (sacks)	Class	Yield (ft/sack)	Weight (lb/gal)	V (ft³)	Comment		
200	C	1.32	14.80		200 SXS W/ 2% CACL		
Additive		Amount	Amount Units	Conc Unit label	Concentration		
CaCl		380.0	lb				
Casing Strings							
Casing Description	OD (in)	String Grade	WT (lb/ft)	Set Depth (ftKB)	Length (ft)		
Surface - 24# J55	8 5/8	J-55	24.00	179.0	171.77		
Casing Description	OD (in)	String Grade	WT (lb/ft)	Set Depth (ftKB)	Length (ft)		
Production - 17# L80	5 1/2	L-80	17.00	3,516.0	3,534.01		



Yates Daily Completion Report

UNIVERSITY DEVIL WOMAN L5 #1

Day # 14

Report # 49.0, Report Date: 12/12/2007

Hole Direction: VERTICAL - Original Hole, 12/12/2007		API/UVI	Surface Legal Location		County	State	Operator
RKB (MD)	Schematic - Actual	Firm Final	4222930253	TX RRC DIST 8/SURV UL/ABS NA/BL L/SEC 5	HUDSPETH	TEXAS	TRAIL MOUNTAIN, INC.
N/S Dist (ft)		North/South Reference		East/West Distance (ft)	East/West Reference	Ground Elevation (ft)	RKB-Ground Distance (ft)
660.0		FSL		660.0	FEL	4,006.00	8.00
AFE Number		Job Category	Primary Job Type		Department	Total AFE Amount	
073960		New Drilling	New Well		Drilling & Completions	1,016,550.00	
Phases							
Phase Type 1				Actual Phase Cost			
DRILLING				454,535.36			
COMPLETION				228,947.00			
Daily Operations							
Day No.	Report Start Date	Report End Date	Formation at Report Time	Lithology	Daily Report Summary		
14	12/12/2007	12/12/2007	BARNETT /SH/	SHALE	W.O.C.		
Operations Next Report Period		Remarks					
PERFORATE, TIH AND ACIDIZE.							
Daily Cost Total		Actual Phase Cost		Cost To Date			
2,075.00		228,947.00		683,482.36			
Daily Contacts							
Job Contact		Phone Mobile					
WADE WHITE, COMPLETIONS FOREMAN		575-703-2565					
Job Contact		Phone Mobile					
MIKE HILL, ENGINEER		575-305-8706					
Job Contact		Phone Mobile					
DAVID PROSE, GEOLOGIST		817-937-3229					
Job Contact		Phone Mobile					
ROB BULLOCK, LANDMAN							
Time Log							
Start Time	End Time	Dur (hrs)	Time Code	Comment			
07:00	07:00		GENERAL OPERATIONS	W.O.C. PREP TO PERFORATE, TIH AND ACIDIZE.			
Daily Costs							
Cost Description		Cost Details		Cost	Vendor		
Completion Unit				600.00	RELIABLE		
Tools & Equip. Rental, Etc. - Completions		Safety Equipment		115.00	ALLIANCE		
Supervision & O/H - Completion				300.00	YPC		
Tools & Equip. Rental, Etc. - Completions		Other Rentals		230.00	PIMA		
Tools & Equip. Rental, Etc. - Completions		Other Rentals		30.00	DOUBLE D		
Tools & Equip. Rental, Etc. - Completions		Tanks		750.00	TWO-STATE EQUIPMENT, INC.		
Tools & Equip. Rental, Etc. - Completions		BOP		50.00	WRH		
Water for Completion					TCB		
Rigs							
Rig Contractor	Rig Type	Rig No.	Rig Supervisor	Rig Start Date	Rig Release Date		
RELIABLE	WSU - Completion Rig			11/25/2007	07:00		
Other In Hole							
Description		Run Date	OD (in)	Top (ftKB)	Btm (ftKB)		
Cement Retainer		12/10/2007 13:00	5 1/2	3,351.0	3,355.0		
Casing Strings							
Casing Description	OD (in)	String Grade	WT (lbs/ft)	Set Depth (ftKB)	Length (ft)		
Surface - 24# J55	8 5/8	J-55	24.00	179.0	171.77		
Casing Description	OD (in)	String Grade	WT (lbs/ft)	Set Depth (ftKB)	Length (ft)		
Production - 17# L80	5 1/2	L-80	17.00	3,516.0	3,534.01		

Original Hole, 12/14, 8-178

Original Hole, 7 7/8, 170-3,516

CISCO, PENNSYLVANIA HELMS (BARNETT SHALE), 2,800

PERFORATED, 3,385-3,410, 11/28/2007 7% KCL H2O, 3,385-3,410, 11/28/2007

PBTD, 3,470, 11/27/2007

TD, 3,516, 11/11/2007

DE TD, W, 3,432



Yates Daily Completion Report

UNIVERSITY DEVIL WOMAN L5 #1

Report # 50.0, Report Date: 12/13/2007

Day # 15

APU/UWI		Surface Legal Location		County	State	Operator	
4222930253		TX RRC DIST 8/SURV ULI/ABS NA/BL L/SEC 5		HUDSPETH	TEXAS	TRAIL MOUNTAIN, INC.	
N/S Dist (ft)		North/South Reference		East/West Distance (ft)	East/West Reference	Ground Elevation (ft)	KB-Ground Distance (ft)
660.0		FSL		660.0	FEL	4,006.00	8.00
AFE Number		Job Category		Primary Job Type	Department	Total AFE Amount	
073960		New Drilling		New Well	Drilling & Completions	1,016,550.00	
Phases							
Phase Type 1				Actual Phase Cost			
DRILLING				454,535.36			
COMPLETION				296,414.00			
Daily Operations							
Day No.	Report Start Date	Report End Date	Formation at Report Time	Lithology	Daily Report Summary		
15	12/13/2007	12/13/2007	BARNETT /SH/	SHALE	PERFORATE, TIH, ACIDIZE, TEST WELL.		
Operations Next Report Period							
RUN BHSP TEST, CATCH GAS SAMPLE. FLOW TEST WELL.							
Daily Cost Total		Actual Phase Cost		Cum Cost To Date			
67,467.00		296,414.00		750,949.36			
Daily Contacts							
Job Contact				Phone Mobile			
WADE WHITE, COMPLETIONS FOREMAN				575-703-2565			
Job Contact				Phone Mobile			
MIKE HILL, ENGINEER				575-365-8706			
Job Contact				Phone Mobile			
DAVID PROSE, GEOLOGIST				817-937-3229			
Job Contact				Phone Mobile			
ROB BULLOCK, LANDMAN							
Time Log							
Start Time	End Time	Dur (hrs)	Time Code	Comment			
07:00	09:00	2.00	PERFORATING	RU BWVL. PERFORATE: 3200'-3225' (151) (BARNETT SHALE). TIH W/ A 5 1/2" 17# AS-1 PKR, S.N., 95-JTS 2 7/8" TBG. SET PKR AT 3143'. RU CRAIN. ACIDIZE PERFS 3200' TO 3225' W/ 1500 GAL 7 1/2% HCL ACID. BROKE-3100 PSI, AVG-5.2 BPM, AVG-1100 PSI, ISDP-350, 15MIN-17 PSI. TLTR-56 BBLs. SEE SWAB REPORT.			
09:00	11:00	2.00	TRIPPING				
11:00	17:00	6.00	WELL TEST				
Daily Costs							
Cost Description		Cost Details		Cost	Vendor		
Completion Unit				4,600.00	RELIABLE		
Tools & Equip. Rental, Etc. - Completions		Safety Equipment		115.00	ALLIANCE		
Supervision & O/H - Completion				300.00	YPC		
Tools & Equip. Rental, Etc. - Completions		Other Rentals		230.00	PIMA		
Tools & Equip. Rental, Etc. - Completions		Other Rentals		2,350.00	DOUBLE D		
Tools & Equip. Rental, Etc. - Completions		Tanks		750.00	TWO-STATE EQUIPMENT, INC.		
Tools & Equip. Rental, Etc. - Completions		BOP		50.00	WRH		
Water for Completion					TCB		
Wireline & Slickline & Perf.				6,766.00	BWVL		
Stimulation for Completion				52,306.00	CRAIN		
Rigs							
Rig Contractor	Rig Type	Rig No.	Rig Supervisor	Rig Start Date	Rig Release Date		
RELIABLE	WSU - Completion Rig			11/25/2007	07:00		
Perforation Statuses							
Open - Testing, 12/13/2007 07:00							
Date	Zone	Depth Top (ftKB)	Depth Btm (ftKB)	Status			
12/13/2007	HELMS (BARNETT SHALE) - 2,800.0', Original Hole	3,200.0	3,225.0	Open - Testing			
Tubing - Production set at 3,143.0ftKB on 12/13/2007 10:00							
Tubing Description	Set Depth (ftKB)	OD (in)	WT (lbs/ft)	String Length (ft)	String Grade	Pull Date	
Tubing - Production	3,143.0	2 7/8	6.50	3,135.00	J-55		
Tubing Components							
Jts	Item Description	OD (in)	ID (in)	Grade	Top (ftKB)	Cum Len (ft)	
95	Tubing	2 7/8	2.441	J-55	8.0	3,135.00	
	Seal Nipple	2 7/8	2.250		3,136.0	7.00	
	AS-1 PKR	5 1/2	2.441		3,137.0	6.00	
Other In Hole							
Description	Run Date	OD (in)	Top (ftKB)	Btm (ftKB)			
Cement Retainer	12/10/2007 13:00	5 1/2	3,351.0	3,355.0			
Casing Strings							
Casing Description	OD (in)	String Grade	WT (lbs/ft)	Set Depth (ftKB)	Length (ft)		
Surface - 24# J55	8 5/8	J-55	24.00	179.0	171.77		
Casing Description	OD (in)	String Grade	WT (lbs/ft)	Set Depth (ftKB)	Length (ft)		
Production - 17# L80	5 1/2	L-80	17.00	3,516.0	3,534.01		
Stimulations & Treatments							
Acid Wash on 12/13/2007 11:00							
Date	Zone	Type	Diversion Method	Stim/Front Company			
12/13/2007	HELMS (BARNETT SHALE) -	Acid Wash		CRAIN ACIDIZING			
11:00	2,800.0', Original Hole						
Stage #<Stage Number>?							
Stage Number	Stage Type	Fluid	V clean (gal)	Top (ftKB)	Bottom (ftKB)	ISDP (psi)	15 Min SIP (psi)
Acid Job		7 1/2% HCl	1500	3,225.0	3,225.0	350.0	17.0
P (break) (psi)	Q (in ft) (gpm)	Avg FI Rate (lb...	Q (gals) (ft/min)	Gas Type	V (gals) (in ft)	Pressure Tubi...	Pressure Casing...
3,100.0		5			1,100.0		56.0
Additive	Type	Amount	Units	Conc (lb/gal)	Sand Size	Note	
7 1/2% HCL ACID		1,500.0	gal				
Additive	Type	Amount	Units	Conc (lb/gal)	Sand Size	Note	
CLAY STA CS-302		6.0	gal				



Yates Daily Completion Report

UNIVERSITY DEVIL WOMAN L5 #1

Report # 50.0, Report Date: 12/13/2007

Day # 15

Hole Direction: VERTICAL - Original Hole, 12/13/2007 S.

IKB (MD) Schematic - Actual Firm Final

Additive Type Amount Units Conc (lb/gal) Sand Size Note

Additive Type Amount Units Conc (lb/gal) Sand Size Note

INHIBITOR
IRON CONTROL

Swabs

12/13/2007 12:00

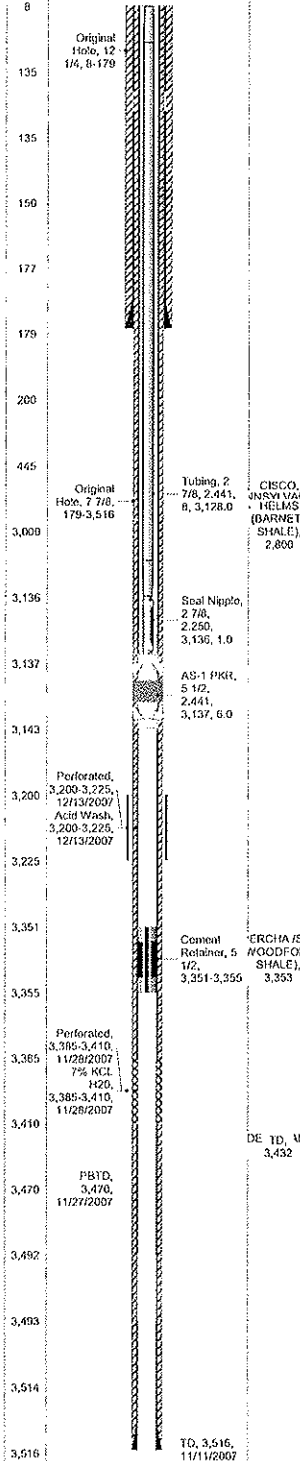
Date Zone Total Oil (bbl) Total Water (bbl) Total Vol (bbl) Swab Company

12/13/2007 12:00 HELMS (BARNETT SHALE) - 2,800.0' 0.0 131.0 131.0 RELIABLE

Comment

Swab Details

Start Time	#	Init Fl Lvl (IKB)	Choke Sz (in)	P (tub) (psi)	P (cas) (psi)	% H2O (%)	Recov (bbl)	Fluid Mfg.	Oil (bbl)	Water Amt (bbl)	Ld Left to Rec (bbl)	Rate Gas (mcf/day)	Gas Rate (bbl/day)	Comment
12:00	1	0				100.0	6.0		0.0	6.0	50.0			IFL- SURF., FLOWING AFTER 1 SWAB RUN.
13:00			1.000	40.0		100.0	63.0		0.0	63.0	-13.0			WELL FLOWING, SHOW OF GAS.
14:00			0.500	80.0		100.0	14.0		0.0	14.0	-27.0			FLOWING, GOOD GAS.
15:00			0.500	40.0		100.0	14.0		0.0	14.0	-41.0			"
16:00			0.500	40.0		100.0	19.0		0.0	19.0	-60.0			"
17:00			0.500	40.0		100.0	15.0		0.0	15.0	-75.0	333.00		WELL FLOWING GAS AND H2O GOOD GAS. SWI SD.





Yates Daily Completion Report

UNIVERSITY DEVIL WOMAN L5 #1

Day # 16

Report # 51.0, Report Date: 12/14/2007

Hole Direction: VERTICAL - Original Hole: 12/14/2007 5:00		API/UVI	Surface Legal Location		County	State	Operator	
Hole (MD)		Schramm - Actual	End Final	4222930253	TX RRC DIST 8/SURV UL/ABS NA/BL L/SEC 5	HUDSPETH	TEXAS	TRAIL MOUNTAIN, INC.
N/S Dist (ft)		660.0	North/South Reference	East/West Distance (ft)	East/West Reference	Ground Elevation (ft)	KB-Ground Distance (ft)	
AFE Number		073960	Job Category	New Drilling	Primary Job Type	New Well	Department	Drilling & Completions
Total AFE Amount		1,016,550.00						
Phases								
Phase Type 1								
Actual Phase Cost								
DRILLING								
COMPLETION								
Daily Operations								
Day No. 16								
Report Start Date 12/14/2007								
Report End Date 12/14/2007								
Formation at Report Time BARNETT /SH/								
Lithology SHALE								
Daily Report Summary BHSP TEST, SWAB TEST.								
Operations Next Report Period								
SWAB TEST.								
Daily Cost Total								
Actual Phase Cost								
Cum Cost To Date								
6,325.00								
268,189.00								
710,274.36								
Daily Contacts								
Job Contact								
WADE WHITE, COMPLETIONS FOREMAN								
Phone Mobile								
575-703-2565								
Job Contact								
MIKE HILL, ENGINEER								
Phone Mobile								
575-365-8706								
Job Contact								
DAVID PROSE, GEOLOGIST								
Phone Mobile								
817-937-3229								
Job Contact								
ROB BULLOCK, LANDMAN								
Phone Mobile								
Time Log								
Start Time								
End Time								
Dur (hrs)								
Time Code								
Comment								
07:00								
10:00								
3.00								
PRESSURE TEST								
SITP-320. RU PRECISION. RUN A BHSP TEST. RD PRECISION. RU WILDCAT MEASUREMENTS. CATCH GAS SAMPLE. SEE SWAB REPORT.								
10:00								
11:00								
1.00								
GENERAL OPERATIONS								
11:00								
17:00								
6.00								
WELL TEST								
Daily Costs								
Cost Description								
Cost Details								
Cost								
Vendor								
Completion Unit								
Tools & Equip. Rental, Etc.- Completions								
Safety Equipment								
4,800.00								
RELIABLE								
Supervision & O/H - Completion								
115.00								
ALLIANCE								
Tools & Equip. Rental, Etc.- Completions								
300.00								
YPC								
Tools & Equip. Rental, Etc.- Completions								
230.00								
PIMA								
Tools & Equip. Rental, Etc.- Completions								
30.00								
DOUBLE D								
Tools & Equip. Rental, Etc.- Completions								
800.00								
TWO-STATE EQUIPMENT, INC.								
Tools & Equip. Rental, Etc.- Completions								
50.00								
WRH								
Water for Completion								
TCB								
Rigs								
Rig Contractor								
RELIABLE								
Rig Type								
WSU - Completion Rig								
Rig No.								
Rig Supervisor								
Rig Start Date								
11/25/2007								
Rig Release Date								
07:00								
Perforation Statuses								
Open - Testing, 12/13/2007 07:00								
Date								
Zone								
Depth Top (ftKB)								
Depth Btm (ftKB)								
Status								
12/13/2007								
HELMES (BARNETT SHALE) - 2,800.0'								
Original Hole								
3,200.0								
3,225.0								
Open - Testing								
Tubing - Production set at 3,143.0ftKB on 12/13/2007 10:00								
Tubing Description								
Set Depth (ftKB)								
OD (in)								
WT (lbs/ft)								
String Length (ft)								
String Grade								
Pull Date								
Tubing - Production								
3,143.0								
2 7/8								
6.50								
3,135.00								
J-55								
Tubing Components								
JIS								
Item Description								
OD (in)								
ID (in)								
Grade								
Top (ftKB)								
Cum Len (ft)								
95' Tubing								
2 7/8								
2,441								
J-55								
8.0								
3,135.00								
Seal Nipple								
2 7/8								
2,250								
3,136.0								
7.00								
AS-1 PKR								
5 1/2								
2,441								
3,137.0								
6.00								
Other In Hole								
Description								
Run Date								
OD (in)								
Top (ftKB)								
Btm (ftKB)								
Cement Retainer								
12/10/2007 13:00								
5 1/2								
3,351.0								
3,355.0								
Casing Strings								
Casing Description								
OD (in)								
String Grade								
WT (lbs/ft)								
Set Depth (ftKB)								
Length (ft)								
Surface - 24# J55								
8 5/8								
J-55								
24.00								
179.0								
171.77								
Casing Description								
OD (in)								
String Grade								
WT (lbs/ft)								
Set Depth (ftKB)								
Length (ft)								
Production - 17# L80								
5 1/2								
L-80								
17.00								
3,516.0								
3,534.01								
Swabs								
12/14/2007 12:00								
Date								
Zone								
Total Oil (bbl)								
Total Water (bbl)								
Total Vol (bbl)								
Swab Company								
12/14/2007 12:00								
HELMES (BARNETT SHALE) - 2,800.0'								
Original Hole								
0.0								
155.0								
155.0								
RELIABLE								
Comment								
Swab Details								
Start Time								
# R.								
Init Fl Lvl (ftKB)								
Choke Sz (in)								
P (psi)								
P (psi)								
% H2O (%)								
Recov (bbl)								
Fluid Meas.								
Oil (bbl)								
Water Amt (bbl)								
Ls Left to Rec (bbl)								
Rate Gas (mcf/day)								
Gas Rate Meas.								
Comment								
12:00								
3								
700								
0.500								
320.0								
100.0								
22.0								
0.0								
22.0								
-97.0								
IFL-600', FLOW								
WELL DOWN,								
FLOW 5 BBLS								
FLUID.								



Yates Daily Completion Report

UNIVERSITY DEVIL WOMAN L5 #1

Day # 16

Report # 51.0, Report Date: 12/14/2007

Well Direction: VERTICAL - Original Hole, 12/14/2007 5:			Swab Details														Gas Rate Mea...	Comment
(ft)	Schematic - Actual	From Final	Start Time	#	Init Fl Lvl (ft)	Choke Sz (in)	P (top) (psi)	P (cas) (psi)	% H2O (%)	Recov (bbl)	Fluid Mea...	Oil (bbl)	Water Amt (bbl)	Ld Left to Rec (bbl)	Rate Gas (mcf/day)	Rate Mea...		
-18			13:00	4	1,000				100.0	22.0		0.0	22.0	-119.0			SCATT. FLUID, GAS AFTER SWAB.	
			14:00	4	1,100				100.0	22.0		0.0	22.0	-141.0			"	
0			15:00	5	1,500				100.0	34.0		0.0	34.0	-175.0			"	
			16:00	5	1,800				100.0	33.0		0.0	33.0	-208.0			"	
7			17:00	5	1,800				100.0	22.0		0.0	22.0	-230.0			SCATT. FLUID, GAS AFTER EACH SWAB RUN. SWI SD.	
8																		
135	Original Hole, 12 1/4, 8-179																	
135																		
150																		
177																		
179																		
200																		
445	Original Hole, 7 7/8, 179-3,516	Tubing, 2 7/8, 2,441, 8, 3,128.0 CISCO, JENSEN VANE HELMS (BARNETT SHALE), 2,800																
3,090		Seal Nipple, 2 7/8, 2,250, 3,136, 1.0																
3,136		AS-1 PKR, 5 1/2, 2,441, 3,137, 5.0																
3,137																		
3,143																		
3,200	Perforated, 3,200-3,225, 12/13/2007 Acid Wash, 3,200-3,225, 12/13/2007																	
3,225																		
3,351		Cement Retainer, 5 1/2, 3,351-3,355 ERCHA/SH WOODFORD SHALE, 3,353																
3,355																		
3,385	Perforated, 3,385-3,410, 11/28/2007 7% KCL H2O, 3,385-3,410, 11/28/2007																	
3,410		DE TD, UN, 3,432																
3,470	FBTD, 3,470, 11/27/2007																	
3,492																		
3,493																		
3,514																		
3,516		TD, 3,516, 11/11/2007																



Yates Daily Completion Report

UNIVERSITY DEVIL WOMAN L5 #1

Day # 17

Report # 52.0, Report Date: 12/15/2007

Well Direction: VERTICAL - Original Hole, 12/15/2007		Swab Details														GOS Rate Mea.	Comment
MD	Schematic - Actual	From Final	Start Time	# R	Init Fl Lvl (KB)	Cable Sz (in)	P (psi)	P (cas) (psi)	% H2O (%)	Recov (bbl)	Fluid Mea.	Oil (bbl)	Water Amt (bbl)	Ld Lvl to Rec (bbl)	Rate Gas (mcf/day)		
18			11:00			1.000	30.0		100.0	31.0		0.0	31.0	-317.0			WELL FLOWING H2O AND GAS.
9			12:00			1.000	10.0		100.0	6.0		0.0	6.0	-323.0			"
7			13:00	5	1,200				100.0	27.0		0.0	27.0	-350.0			SCATT FLUID, GOOD GAS.
8			14:00	5	1,300				100.0	28.0		0.0	28.0	-378.0			"
			15:00	5	1,200				100.0	29.0		0.0	29.0	-407.0			"
			16:00	5	1,500				100.0	29.0		0.0	29.0	-436.0			"
			17:00	5	1,500				100.0	30.0		0.0	30.0	-466.0			SCATT. FLUID, GOOD GAS. SWI SD.
136	Original Hole, 12 1/4, 8-128																
135																	
150																	
177																	
179																	
200																	
445																	
3,000	Original Hole, 7 7/8, 179-3,516	Tubing, 2 7/8, 2,441, 8, 3,128.0 CISCO, JNSV VAN HELMS (BARNETT SHALE), 2,800															
3,136		Seal Nipple, 2 7/8, 2,259, 3,136, 1.0															
3,137		AS-1 PGR, 5 1/2, 2,441, 3,137, 6.0															
3,143																	
3,200	Perforated, 3,200-3,225, 12/13/2007 Acid Wash, 3,200-3,225, 12/13/2007																
3,225																	
3,351																	
3,355		Cement Retainer, 5 1/2, 3,351-3,355 ERCHA/SH WOODFORD SHALE, 3,353															
3,385	Perforated, 3,385-3,410, 11/28/2007 7% KCL H2O																
3,410																	
3,470	PBTD, 3,470, 11/27/2007																
3,492																	
3,493																	
3,514																	
3,516		TD, 3,516, 11/11/2007															



Yates Daily Completion Report

UNIVERSITY DEVIL WOMAN L5 #1

Day # 18

Report # 53.0, Report Date: 12/16/2007

Hole Direction: VERTICAL - Original Hole, 12/16/2007		API/Well	Surface Legal Location	County	State	Operator								
Schematic - Actual		4222930253	TX RRC DIST 8/SURV U/ABS NA/BL L/SEC 5	HUDSPETH	TEXAS	TRAIL MOUNTAIN, INC.								
N/S Dist (ft)		660.0	North/South Reference	East/West Distance (ft)	East/West Reference	Ground Elevation (ft)								
660.0		FSL	660.0	FEL	4,006.00	8.00								
AFE Number		073960	Job Category	Primary Job Type	Department	Total AFE Amount								
18		New Drilling	New Well	Drilling & Completions	1,016,550.00									
Phases														
Phase Type 1				Actual Phase Cost										
DRILLING				454,535.36										
COMPLETION				268,189.00										
Daily Operations														
Day No.	Report Start Date	Report End Date	Formation at Report Time	Lithology	Daily Report Summary									
18	12/16/2007 07:00	12/16/2007 17:00	BARNETT /SH/	SHALE	SWAB TEST.									
Operations Next Report Period														
SWAB TEST.														
Daily Cost Total		Actual Phase Cost		Cum Cost To Date										
6,125.00		268,189.00		722,724.36										
Daily Contacts														
Job Contact				Phone Mobile										
WADE WHITE, COMPLETIONS FOREMAN				575-703-2565										
Job Contact				Phone Mobile										
MIKE HILL, ENGINEER				575-365-8706										
Job Contact				Phone Mobile										
DAVID PROSE, GEOLOGIST				817-937-3229										
Job Contact				Phone Mobile										
ROB BULLOCK, LANDMAN														
Time Log														
Start Time	End Time	Duration (hrs)	Time Code	Comment										
07:00	17:00	10.00	WELL TEST	SITP-200. SEE SWAB REPORT										
Daily Costs														
Cost Description		Cost Details		Cost	Vendor									
Completion Unit		Safety Equipment		4,600.00	RELIABLE									
Tools & Equip. Rental, Etc. - Completions				115.00	ALLIANCE									
Supervision & O/H - Completion				300.00	YPC									
Tools & Equip. Rental, Etc. - Completions		Other Rentals		230.00	PIMA									
Tools & Equip. Rental, Etc. - Completions		Other Rentals		30.00	DOUBLE D									
Tools & Equip. Rental, Etc. - Completions		Tanks		800.00	TWO-STATE EQUIPMENT, INC.									
Tools & Equip. Rental, Etc. - Completions		BOP		50.00	WRH									
Water for Completion					TCB									
Rigs														
Rig Contractor	Rig Type	Rig No.	Rig Supervisor	Rig Start Date	Rig Release Date									
RELIABLE	WSU - Completion			11/25/2007	07:00									
Perforation Statuses														
Open - Testing, 12/13/2007 07:00														
Date	Zone	Depth Top (ftKB)	Depth Btm (ftKB)	Status										
12/13/2007	HELMS (BARNETT SHALE) - 2,800.0', Original Hole	3,200.0	3,225.0	Open - Testing										
Tubing - Production set at 3,143.0ftKB on 12/13/2007 10:00														
Tubing Description	Set Depth (ftKB)	OD (in)	WT (lb/ft)	String Length (ft)	String Grade	Full Date								
Tubing - Production	3,143.0	2 7/8	6.50	3,135.00	J-55									
Tubing Components														
Jts	Item Description	OD (in)	ID (in)	Grade	Top (ftKB)	Cum Len (ft)								
95	Tubing	2 7/8	2.441	J-55	8.0	3,135.00								
	Seal Nipple	2 7/8	2.250		3,136.0	7.00								
	AS-1 PKR	5 1/2	2.441		3,137.0	6.00								
Other In Hole														
Description	Run Date	OD (in)	Top (ftKB)	Btm (ftKB)										
Cement Retainer	12/10/2007 13:00	5 1/2	3,351.0	3,355.0										
Casing Strings														
Casing Description	OD (in)	String Grade	WT (lb/ft)	Set Depth (ftKB)	Length (ft)									
Surface - 24# J55	8 5/8	J-55	24.00	179.0	171.77									
Casing Description	OD (in)	String Grade	WT (lb/ft)	Set Depth (ftKB)	Length (ft)									
Production - 17# L80	5 1/2	L-80	17.00	3,516.0	3,534.01									
Swabs														
12/16/2007 07:00														
Date	Zone	Total Oil (bbl)	Total Water (bbl)	Total Vol (bbl)	Swab Company									
12/16/2007 07:00	HELMS (BARNETT SHALE) - 2,800.0', Original Hole	0.0	230.0	230.0	RELIABLE									
Comment														
Swab Details														
Start Time	#	Init Fl Lvl (ftKB)	Choke Sz (in)	P (lub) (psi)	P (cns) (psi)	% H2O (%)	Recov (bbl)	Fluid Men	Oil (bbl)	Water Amt (bbl)	Lt Left to Rec (bbl)	Rate Gas (mcf/day)	Gas Rate (mcf)	Comment
07:00				200.0					0.0	0.0	-466.0			LINES FROZE ON RIG AND FLOW LINE.
08:00				200.0					0.0	0.0	-466.0			"
09:00			0.500	200.0					0.0	0.0	-466.0			FLOW WELL DOWN, IFI-800'.
10:00	4	1,000				100.0	24.0		0.0	24.0	-490.0			SCATT FLUID, GOOD GAS.
11:00	5	1,300				100.0	30.0		0.0	30.0	-520.0			"



Yates Daily Completion Report

UNIVERSITY DEVIL WOMAN L5 #1

Day # 19

Report # 54.0, Report Date: 12/17/2007

Hole Direction: VERTICAL - Original Hole, 12/17/2007		API#	Surface Legal Location	County	State	Operator	
MD	Schematic - Actual	4222930253	TX RRC DIST 8/SURV UL/ABS NA/BL L/SEC 5	HUDSPETH	TEXAS	TRAIL MOUNTAIN, INC.	
N/S Dist (ft)		North/South Reference		East/West Distance (ft)	East/West Reference	Ground Elevation (ft)	KB-Ground Distance (ft)
660.0		FSL		660.0	FEL	4,006.00	8.00
AFE Number		Job Category		Primary Job Type		Department	Total AFE Amount
073960		New Drilling		New Well		Drilling & Completions	1,016,550.00
Phases							
Phase Type 1				Actual Phase Cost			
DRILLING				454,535.36			
COMPLETION				292,811.00			
Daily Operations							
Day No.	Report Start Date	Report End Date	Formation at Report Time	Lithology	Daily Report Summary		
19	12/17/2007	12/17/2007	BARNETT /SH	SHALE	TOH, TIH, INSTALL PUMPJACK, WELL PUMPING.		
Operations Next Report Period		Remarks					
RDMO.							
Daily Cost Total		Actual Phase Cost		Cum Cost To Date			
24,622.00		292,811.00		747,346.36			
Daily Contacts							
Job Contact				Phone Mobile			
WADE WHITE, COMPLETIONS FOREMAN				575-703-2565			
Job Contact				Phone Mobile			
MIKE HILL, ENGINEER				575-365-8706			
Job Contact				Phone Mobile			
DAVID PROSE, GEOLOGIST				817-937-3229			
Job Contact				Phone Mobile			
ROB BULLOCK, LANDMAN							
Time Log							
Start Time	End Time	Dur (hrs)	Time Code	Comment			
07:00	11:00	4.00	TRIPPING	SITP-170. FLOW WELL DOWN. RELEASE PKR AT 3143'. TOH W/ TBG AND PKR. TIH W/ 2 7/8" PRODUCTION STRING. 1-2 1/2" STRAINER SCREEN, S.N. AT 3268', 9-JTS 2 7/8" TBG, T.A. SET AT 2971'. 90-JTS 2 7/8" TBG. ND BOP. NUWH. TIH W/ PUMP AND ROD STRING. HANG WELL ON PUMP. WELL PUMPING GOOD. SHUT DOWN. TURN TO PRODUCTION.			
11:00	12:00	1.00	INSTALL WELLHEAD				
12:00	15:00	3.00	TRIPPING				
15:00	17:00	2.00	GENERAL OPERATIONS				
17:00	17:00		TURN TO PRODUCTION				
Daily Costs							
Cost Description		Cost Details		Cost	Vendor		
Completion Unit				4,300.00	RELIABLE		
Tools & Equip. Rental, Etc. - Completions		Safety Equipment		115.00	ALLIANCE		
Supervision & O/H - Completion				300.00	YPC		
Tools & Equip. Rental, Etc. - Completions		Other Rentals		230.00	PIMA		
Tools & Equip. Rental, Etc. - Completions		Other Rentals		30.00	DOUBLE D		
Tools & Equip. Rental, Etc. - Completions		Tanks		800.00	TWO-STATE EQUIPMENT, INC.		
Tools & Equip. Rental, Etc. - Completions		BOP		50.00	WRH		
Water for Completion					TCB		
Tubing				15,112.00	YPC (YARD)		
Christmas Tree & Well Head				3,685.00	YPC (YARD)		
Rigs							
Rig Contractor		Rig Type	Rig No.	Rig Supervisor		Rig Start Date	Rig Release Date
RELIABLE		WSU - Completion Rig				11/25/2007	07:00
Perforation Statuses							
Open - Testing, 12/13/2007 07:00							
Date	Zone	Depth Top (ftKB)	Depth Btm (ftKB)	Status			
12/13/2007	HELMES (BARNETT SHALE) - 2,800.0'	3,200.0	3,225.0	Open - Testing			
Tubing - Production set at 3,143.0ftKB on 12/13/2007 10:00							
Tubing Description		Set Depth (ftKB)	OD (in)	WT (lbs/ft)	String Length (ft)	String Grade	Pull Date
Tubing - Production		3,143.0	2 7/8	6.50	3,135.00	J-55	12/17/2007 10:00
Tubing Components							
Jts	Item Description	OD (in)	ID (in)	Grade	Top (ftKB)	Cum Len (ft)	
95	Tubing	2 7/8	2.441	J-55	8.0	3,135.00	
	Seal Nipple	2 7/8	2.250		3,136.0	7.00	
	AS-1 PKR	5 1/2	2.441		3,137.0	6.00	
Tubing - Production set at 3,291.0ftKB on 12/17/2007 12:00							
Tubing Description		Set Depth (ftKB)	OD (in)	WT (lbs/ft)	String Length (ft)	String Grade	Pull Date
Tubing - Production		3,291.0	2 7/8	6.50	3,283.00	J-55	
Tubing Components							
Jts	Item Description	OD (in)	ID (in)	Grade	Top (ftKB)	Cum Len (ft)	
90	Tubing	2 7/8	2.441	J-55	8.0	3,283.00	
	Tubing Anchor/catcher	5 1/2	2.441		2,968.0	323.00	
9	Tubing	2 7/8	2.441	J-55	2,971.0	320.00	
	Sealing Nipple	2 7/8	2.250		3,267.0	24.00	
1	STRAINER SCREEN	2 7/8	2.441		3,268.0	23.00	
Other In Hole							
Description		Run Date	OD (in)	Top (ftKB)	Btm (ftKB)		
Cement Retainer		12/10/2007 13:00	5 1/2	3,351.0	3,355.0		
Casing Strings							
Casing Description		OD (in)	String Grade	WT (lbs/ft)	Set Depth (ftKB)	Length (ft)	
Surface - 24# J55		8 5/8	J-55	24.00	179.0	171.77	

www.peloton.com

Page 1/2

Report Printed: 12/18/2007

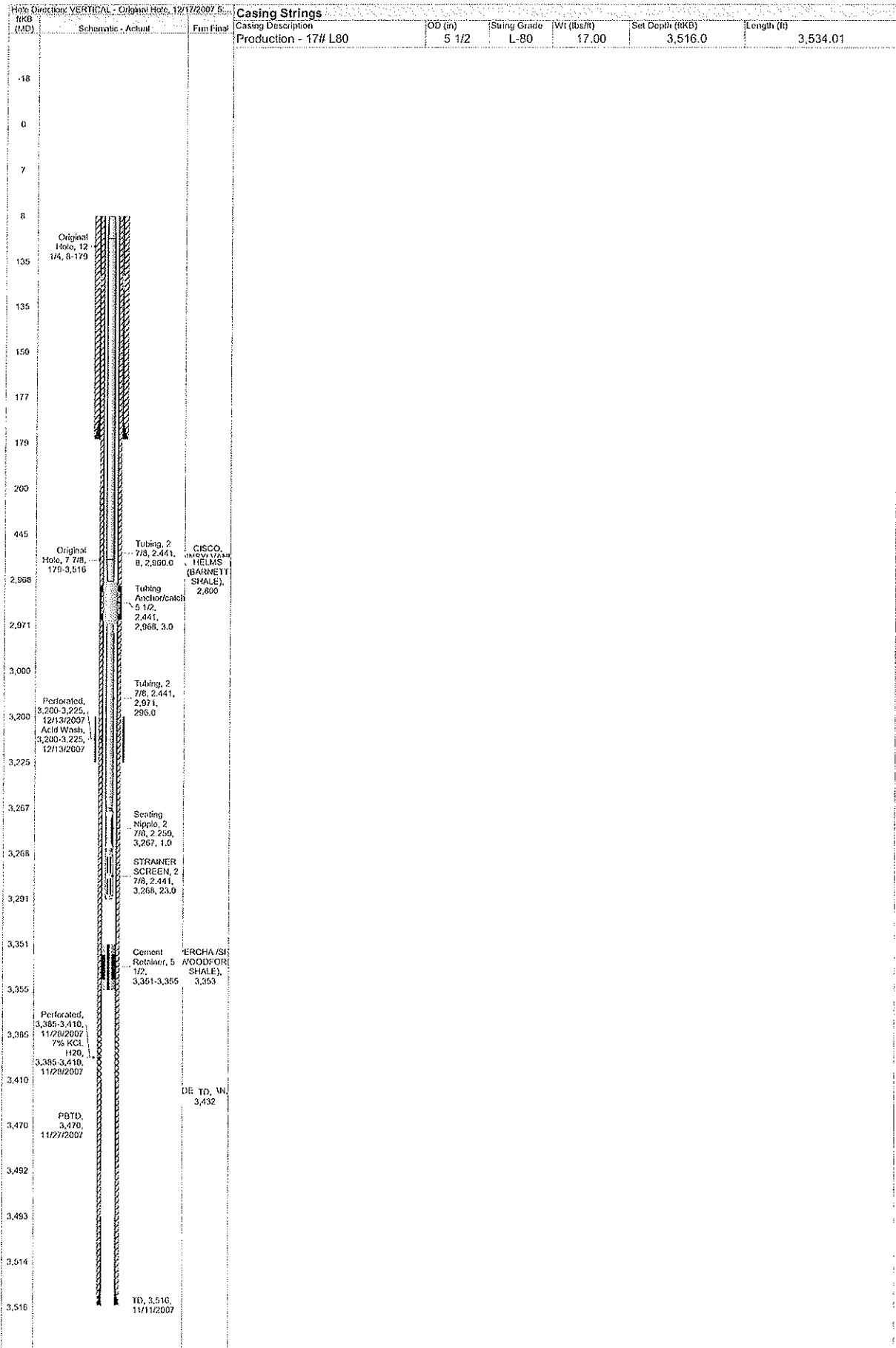


Yates Daily Completion Report

UNIVERSITY DEVIL WOMAN L5 #1

Day # 19

Report # 54.0, Report Date: 12/17/2007





Yates Daily Completion Report

UNIVERSITY DEVIL WOMAN L5 #1

Day # 20

Report # 55.0, Report Date: 12/18/2007

Hole Direction: VERTICAL - Original Hole, 12/18/2007 6		API/WVI	Surface Legal Location		County	State	Operator
NKB (MD)		4222930253	TX RRC DIST 8/SURV UL/ABS NA/BL L/SEC 5		HUDSPETH	TEXAS	TRAIL MOUNTAIN, INC.
Schematic - Actual		Form Final	N/S Dist (ft)	North/South Reference	East/West Distance (ft)	East/West Reference	Ground Elevation (ft)
-18			660.0	FSL	660.0	FEL	4,006.00
0			Job Category		Primary Job Type	Department	Total AFE Amount
7			New Drilling		New Well	Drilling & Completions	1,016,550.00
8			Phases				
135			Phase Type 1				Actual Phase Cost
135			DRILLING				454,535.36
135			COMPLETION				295,141.00
150			Daily Operations				
177			Day No.	Report Start Date	Report End Date	Formation at Report Time	Lithology
179			20	12/18/2007	12/18/2007	BARNETT /SH/	SHALE
200			Operations Next Report Period				Remarks
200			TURN TO PROD.				
200			Daily Cost Total	Actual Phase Cost		Cum Cost To Date	
200			2,330.00	295,141.00		749,676.36	
200			Daily Contacts				
200			Job Contact				Phone Mobile
200			WADE WHITE, COMPLETIONS FOREMAN				575-703-2565
200			Job Contact				Phone Mobile
200			MIKE HILL, ENGINEER				575-365-8706
200			Job Contact				Phone Mobile
200			DAVID PROSE, GEOLOGIST				817-937-3229
200			Job Contact				Phone Mobile
200			ROB BULLOCK, LANDMAN				
200			Time Log				
200			Start Time	End Time	Dur (hrs)	Time Code	Comment
200			07:00	09:00	2.00	RDMO COMPLETION	RDMO. TURN TO PRODUCTION.
200			Daily Costs				
200			Cost Description		Cost Details	Cost	Vendor
200			Completion Unit		Safety Equipment	1,200.00	RELIABLE
200			Tools & Equip. Rental, Etc. - Completions				ALLIANCE
200			Supervision & O/H - Completion			300.00	YPC
200			Tools & Equip. Rental, Etc. - Completions		Other Rentals		PIMA
200			Tools & Equip. Rental, Etc. - Completions		Other Rentals	30.00	DOUBLE D
200			Tools & Equip. Rental, Etc. - Completions		Tanks	800.00	TWO-STATE EQUIPMENT, INC.
200			Tools & Equip. Rental, Etc. - Completions		BOP		WRH
200			Rigs				
200			Rig Contractor	Rig Type	Rig No.	Rig Supervisor	Rig Start Date
200			RELIABLE	WSU - Completion			11/25/2007
200				Rig			07:00
200			Perforation Statuses				
200			Open - Testing, 12/13/2007 07:00				
200			Date	Zone	Depth Top (ftKB)	Depth Bot (ftKB)	Status
200			12/13/2007	HELMES (BARNETT SHALE) - 2,800.0'	3,200.0	3,225.0	Open - Testing
200			Tubing - Production set at 3,291.0ftKB on 12/17/2007 12:00				
200			Tubing Description	Set Depth (ftKB)	OD (in)	WT (lbs/ft)	String Length (ft)
200			Tubing - Production	3,291.0	2 7/8	6.50	3,283.00
200			Tubing Components				
200			Jts.	Item Description	OD (in)	ID (in)	Grade
200			90	Tubing	2 7/8	2.441	J-55
200				Tubing Anchor/catcher	5 1/2	2.441	
200			9	Tubing	2 7/8	2.441	J-55
200				Sealing Nipple	2 7/8	2.250	
200			1	STRAINER SCREEN	2 7/8	2.441	
200			Other In Hole				
200			Description	Run Date	OD (in)	Top (ftKB)	Bot (ftKB)
200			Cement Retainer	12/10/2007 13:00	5 1/2	3,351.0	3,355.0
200			Casing Strings				
200			Casing Description	OD (in)	String Grade	WT (lbs/ft)	Set Depth (ftKB)
200			Surface - 24# J55	8 5/8	J-55	24.00	179.0
200			Casing Description	OD (in)	String Grade	WT (lbs/ft)	Set Depth (ftKB)
200			Production - 17# L80	5 1/2	L-80	17.00	3,516.0