



RAILROAD COMMISSION OF TEXAS

Form W-2

1701 N. Congress
P.O. Box 12967
Austin, Texas 78701-2967

Status: Approved
Date: 12/21/2015
Tracking No.: 144934

OIL WELL POTENTIAL TEST, COMPLETION OR RECOMPLETION REPORT, AND LOG

OPERATOR INFORMATION

Operator Name: WARREN AMERICAN OIL COMPANY, LLC
Operator Address: PO BOX 470372 TULSA, OK 74147-0372
Operator No.: 897722

WELL INFORMATION

API No.: 42-105-42254
Well No.: 5
Lease Name: UNIVERSITY OF TEXAS - 245
RRC Lease No.: 09705
Location: Section: 4, Block: 46, Survey: UL, Abstract:
County: CROCKETT
RRC District No.: 7C
Field Name: FARMER (SAN ANDRES)
Field No.: 30243500
Latitude: 30.99608
Longitude: -101.35536
This well is located 14 miles in a SE direction from BIG LAKE, which is the nearest town in the county.

FILING INFORMATION

Purpose of filing: Initial Potential
Type of completion: New Well
Well Type: Producing
Completion or Recompletion Date: 09/11/2015
Type of Permit
Date
Permit No.
Permit to Drill, Plug Back, or Deepen
05/27/2015
806870
Rule 37 Exception
Fluid Injection Permit
O&G Waste Disposal Permit
Other:

COMPLETION INFORMATION

Spud date: 07/23/2015
Date of first production after rig released: 09/11/2015
Date plug back, deepening, recompletion, or drilling operation commenced: 07/23/2015
Date plug back, deepening, recompletion, or drilling operation ended: 09/11/2015
Number of producing wells on this lease in this field (reservoir) including this well: 5
Distance to nearest well in lease & reservoir (ft.): 1351.0
Total number of acres in lease: 320.00
Elevation (ft.): 2593 GL
Total depth TVD (ft.): 2313
Total depth MD (ft.):
Plug back depth TVD (ft.):
Plug back depth MD (ft.):
Was directional survey made other than inclination (Form W-12)? No
Rotation time within surface casing (hours): 37.8
Is Cementing Affidavit (Form W-15) attached? Yes
Recompletion or reclass? No
Multiple completion? No
Type(s) of electric or other log(s) run: Combo of Induction/Neutron/Density/Sonic
Electric Log Other Description:
Location of well, relative to nearest lease boundaries
Off Lease : No
of lease on which this well is located: 350.0 Feet from the East Line and 350.0 Feet from the North Line of the UNIVERSITY OF TEXAS 245 Lease.

FORMER FIELD (WITH RESERVOIR) & GAS ID OR OIL LEASE NO.

Field & Reservoir
Gas ID or Oil Lease No.
Well No.
Prior Service Type

PACKET: N/A

| | | | |
|--|-----|--------------------|------------------|
| W2: | N/A | | |
| FOR NEW DRILL OR RE-ENTRY, SURFACE CASING DEPTH DETERMINED BY: | | | |
| GAU Groundwater Protection Determination | | Depth (ft.): 750.0 | Date: 11/28/2012 |
| SWR 13 Exception | | Depth (ft.): | |

| INITIAL POTENTIAL TEST DATA FOR NEW COMPLETION OR RECOMPLETION | | |
|--|------|-----------------------------------|
| Date of test: 09/17/2015 | | Production method: Pumping |
| Number of hours tested: 24 | | Choke size: |
| Was swab used during this test? | No | Oil produced prior to test: 27.00 |
| PRODUCTION DURING TEST PERIOD: | | |
| Oil (BBLS): 38.00 | | Gas (MCF): 61 |
| Gas - Oil Ratio: 1605 | | Flowing Tubing Pressure: |
| Water (BBLS): 5 | | |
| CALCULATED 24-HOUR RATE | | |
| Oil (BBLS): 38.0 | | Gas (MCF): 61 |
| Oil Gravity - API - 60.: | 34.7 | Casing Pressure: |
| Water (BBLS): 5 | | |

| CASING RECORD | | | | | | | | | | | |
|---------------|-------------------------|-------------------|-----------------|---------------------|---------------------------|--------------------------------|--------------|-----------------------|-------------------------|---------------------|----------------------------|
| Row | Type of Casing | Casing Size (in.) | Hole Size (in.) | Setting Depth (ft.) | Multi - Stage Depth (ft.) | Multi - Stage Shoe Depth (ft.) | Cement Class | Cement Amount (sacks) | Slurry Volume (cu. ft.) | Top of Cement (ft.) | TOC Determined By |
| 1 | Surface | 8 5/8 | 12 1/4 | 801 | | | CLASS C | 580 | 901.0 | SURF | Circulated to Surface |
| 2 | Conventional Production | 5 1/2 | 7 7/8 | 2298 | | | CLASS C | 260 | 418.0 | ACE | 1093 Cement Evaluation Log |

| LINER RECORD | | | | | | | | | |
|--------------|------------------|-----------------|-----------------|--------------------|--------------|-----------------------|-------------------------|---------------------|-------------------|
| Row | Liner Size (in.) | Hole Size (in.) | Liner Top (ft.) | Liner Bottom (ft.) | Cement Class | Cement Amount (sacks) | Slurry Volume (cu. ft.) | Top of Cement (ft.) | TOC Determined By |
| N/A | | | | | | | | | |

| TUBING RECORD | | | | |
|---------------|------------|-------|------------|-------------------------|
| Row | Size (in.) | Depth | Size (ft.) | Packer Depth (ft.)/Type |
| 1 | 2 3/8 | 2117 | | / |

| PRODUCING/INJECTION/DISPOSAL INTERVAL | | | |
|---------------------------------------|------------|------------|----------|
| Row | Open hole? | From (ft.) | To (ft.) |
| 1 | No | L 1968 | 1974.0 |
| 2 | No | L 2002 | 2008.0 |

| ACID, FRACTURE, CEMENT SQUEEZE, CAST IRON BRIDGE PLUG, RETAINER, ETC. | | | |
|---|--------------------------|---|-----------------------------|
| Was hydraulic fracturing treatment performed? | | Yes | |
| Is well equipped with a downhole actuation sleeve? | | If yes, actuation pressure (PSIG): | |
| No | | | |
| Production casing test pressure (PSIG) prior to hydraulic fracturing treatment: | | Actual maximum pressure (PSIG) during hydraulic fracturing: | |
| 3000 | | 2360 | |
| Has the hydraulic fracturing fluid disclosure been reported to FracFocus disclosure registry (SWR29)? | | Yes | |
| | | | |
| <u>Row</u> | <u>Type of Operation</u> | <u>Amount and Kind of Material Used</u> | <u>Depth Interval (ft.)</u> |

| | | | | |
|---|----------|--|------|------|
| 1 | Acid | 1500 GAL 15% HCL NEFE | 1968 | 2008 |
| 2 | Fracture | 963 BBLS BORATE 20# XL GEL & 74,518 LBS SAND | 1968 | 2008 |

FORMATION RECORD

| <u>Formations</u> | <u>Encountered</u> | <u>Depth TVD (ft.)</u> | <u>Depth MD (ft.)</u> | <u>Is formation isolated?</u> | <u>Remarks</u> |
|-------------------|--------------------|------------------------|-----------------------|-------------------------------|----------------------|
| QUEEN | Yes | 1651.0 | | Yes | |
| SAN ANDRES | Yes | 1868.0 | | Yes | |
| LEONARD | No | | | No | WELL NOT DEEP ENOUGH |
| WOLFCAMP | No | | | No | WELL NOT DEEP ENOUGH |
| CANYON | No | | | No | WELL NOT DEEP ENOUGH |
| STRAWN | No | | | No | WELL NOT DEEP ENOUGH |
| DEVONIAN | No | | | No | WELL NOT DEEP ENOUGH |
| ELLENBURGER | No | | | No | WELL NOT DEEP ENOUGH |

Do the producing interval of this well produce H2S with a concentration in excess of 100 ppm (SWR 36)? Yes

Is the completion being downhole commingled (SWR 10)? No

REMARKS

RRC REMARKS

PUBLIC COMMENTS:

CASING RECORD :

TUBING RECORD:

PRODUCING/INJECTION/DISPOSAL INTERVAL :

ACID, FRACTURE, CEMENT SQUEEZE, CAST IRON BRIDGE PLUG, RETAINER, ETC. :

POTENTIAL TEST DATA:

OPERATOR'S CERTIFICATION

| | |
|-------------------------------|----------------------------|
| Printed Name: Cheryl Dixon | Title: Land Manager |
| Telephone No.: (918) 481-7942 | Date Certified: 12/01/2015 |

Cementer: Fill in shaded areas.
Operator: Fill in other items.

Form W-15
Cementing Report
Rev. 4/1/83
483-045

RAILROAD COMMISSION OF TEXAS
Oil and Gas Division

| | | | |
|---|--------------------------------------|--|---|
| 1. Operator's Name (As shown on Form P-5, Organization Report) Warren American Oil Co., LLC | 2. RRC Operator No. 897722 | 3. RRC District No. 7C | 4. County of Well Site Crockett |
| 5. Field Name (Wildcat or exactly as shown on RRC records) Farmer (San Andres) | | 6. API No. 4240542254 | 7. Drilling Permit No. 806870 |
| 8. Lease Name University of Texas 245 | 9. Rule 37 Case No. | 10. Oil Lease/Gas ID No. 09705 | 11. Well No. 5 |

| CASING CEMENTING DATA: | | SURFACE CASING | INTER-MEDIATE CASING | PRODUCTION CASING | | MULTI-STAGE CEMENTING PROCESS | |
|---|---------------------------------------|----------------|----------------------|-------------------|---------------------------|-------------------------------|------|
| | | | | Single String | Multiple Parallel Strings | Tool | Shoe |
| 12. Cementing Date | | 7-27-15 | | | | | |
| 13. •Drilled hole size | | 12 1/4 | | | | | |
| •Est. % wash or hole enlargement | | | | | | | |
| 14. Size of casing (In. O.D.) | | 8 5/8 | | | | | |
| 15. Top of liner (ft.) | | | | | | | |
| 16. Setting depth (ft.) | | 801 | | | | | |
| 17. Number of centralizers used | | 8 | | | | | |
| 18. Hrs. waiting on cement before drill-out | | | | | | | |
| 1st Slurry | 19. API cement used: No. of sacks ▶ | 230 | | | | | |
| | Class ▶ | c-lite | | | | | |
| | Additives ▶ | cello | | | | | |
| 2nd Slurry | No. of sacks ▶ | 200 | | | | | |
| | Class ▶ | c | | | | | |
| | Additives ▶ | cc, cello | | | | | |
| 3rd Slurry | No. of sacks ▶ | 150 | | | | | |
| | Class ▶ | c | | | | | |
| | Additives ▶ | cc, cello | | | | | |
| 1st | 20. Slurry pumped: Volume (cu. ft.) ▶ | 432 | | | | | |
| | Height (ft.) ▶ | 1046 | | | | | |
| 2nd | Volume (cu. ft.) ▶ | 268 | | | | | |
| | Height (ft.) ▶ | 649 | | | | | |
| 3rd | Volume (cu. ft.) ▶ | 201 | | | | | |
| | Height (ft.) ▶ | 486 | | | | | |
| Total | Volume (cu. ft.) ▶ | 901 | | | | | |
| | Height (ft.) ▶ | 2181 | | | | | |
| 21. Was cement circulated to ground surface (or bottom of cellar) outside casing? | | yes | | | | | |

22. Remarks top off thru 1" w/a50 sx class c

OVER

| CEMENTING TO PLUG AND ABANDON | PLUG # 1 | PLUG # 2 | PLUG # 3 | PLUG # 4 | PLUG # 5 | PLUG # 6 | PLUG # 7 | PLUG # 8 |
|---|----------|----------|----------|----------|----------|----------|----------|----------|
| 23. Cementing date | | | | | | | | |
| 24. Size of hole or pipe plugged (in.) | | | | | | | | |
| 25. Depth to bottom of tubing or drill pipe (ft.) | | | | | | | | |
| 26. Sacks of cement used (each plug) | | | | | | | | |
| 27. Slurry volume pumped (cu. ft.) | | | | | | | | |
| 28. Calculated top of plug (ft.) | | | | | | | | |
| 29. Measured top of plug, if tagged (ft.) | | | | | | | | |
| 30. Slurry wt. (lbs/gal) | | | | | | | | |
| 31. Type cement | | | | | | | | |

CEMENTER'S CERTIFICATE: I declare under penalties prescribed in Sec. 91.143, Texas Natural Resources Code, that I am authorized to make this certification, that the cementing of casing and/or the placing of cement plugs in this well as shown in the report was performed by me or under my supervision, and that the cementing data and facts presented on both sides of this form are true, correct, and complete, to the best of my knowledge. This certification covers cementing data only.

Michael Tollett BASIC ENERGY SERVICES [Signature]
Name and title of cementer's representative Cementing Company Signature
P. O. Box 1519 Eastland, TX 76448 254-442-2200 July 27 2015
Address City, State, Zip Code Tel.: Area Code Number Date: mo. day yr.

OPERATOR'S CERTIFICATE: I declare under penalties prescribed in Sec. 91.143, Texas Natural Resources Code, that I am authorized to make this certification, that I have knowledge of the well data and information presented in this report, and that data and facts presented on both sides of this form are true, correct, and complete, to the best of my knowledge. This certification covers all well data.

JOHN BEIRKROGHTS VP-OPERATIONS [Signature]
Typed or printed name of operator's representative Title Signature
P.O. Box 470372 Tulsa OK 7447 918/481-7925 11/16/2015
Address City, State, Zip Code Tel.: Area Code Number Date: mo. day yr.

Instructions to Form W-15, Cementing Report

IMPORTANT: Operators and cementing companies must comply with the requirements of the Commission's Statewide Rules 8 (Water Protection), 13 (Casing, Cementing, Drilling, and Completion), and 14 (Well Plugging). For offshore operations, see the requirements of Rule 13 (c).

A. What to file. An operator should file an original and one copy of the completed Form W-15 for each cementing company used on a well. The cementing of different casing strings on a well by one cementing company may be reported on one form. Form W-15 should be filed with the following:

- An initial oil or gas completion report, Form W-2 or G-1, as required by Statewide or special field rules;
- Form W-4, Application for Multiple Completion, if the well is a multiple parallel casing completion; and
- Form W-3, Plugging Record, unless the W-3 is signed by the cementing company representative. When reporting dry holes, operators must complete Form W-15, in addition to Form W-3, to show any casing cemented in the hole.

B. Where to file. The appropriate Commission District Office for the county in which the well is located.

C. Surface casing. An operator must set and cement sufficient surface casing to protect all usable-quality water strata, as defined by the Texas Department of Water Resources, Austin. Before drilling a well in any field or area in which no field rules are in effect or in which surface casing requirements are not specified in the applicable rules, an operator must obtain a letter from the Department of Water Resources stating the protection depth. Surface casing should not be set deeper than 200 feet below the specified depth without prior approval from the Commission.

D. Centralizers. Surface casing must be centralized at the shoe, above and below a stage collar or diverting tool, if run, and through usable-quality water zones. In nondeviated holes, a centralizer must be placed every fourth joint from the cement shoe to the ground surface or to the bottom of the cellar. All centralizers must meet API specifications.

E. Exceptions and alternative casing programs. The District Director may grant an exception to the requirements of Statewide Rule 13. In a written application, an operator must state the reason for the requested exception and outline an alternate program for casing and cementing through the protection depth for strata containing usable-quality water. The District Director may approve, modify, or reject a proposed program. An operator must obtain approval of any exception before beginning casing and cementing operations.

F. Intermediate and production casing. For specific technical requirements, operators should consult Statewide Rule 13 (b) (3) and (4).

G. Plugging and abandoning. Cement plugs must be placed in the wellbore as required by Statewide Rule 14. The District Director may require additional cement plugs. For onshore or inland wells, a 10-foot cement plug must be placed in the top of the well, and the casing must be cut off three feet below the ground surface. All cement plugs, except the top plug, must have sufficient slurry volume to fill 100 feet of hole, plus ten percent for each 1,000 feet of depth from the ground surface to the bottom of the plug.

To plug and abandon a well, operators must use only cementers approved by the Director of Field Operations. Cementing companies, service companies, or operators can qualify as approved cementers by demonstrating that they are able to mix and pump cement in compliance with Commission rules and regulations.

Cementor: Fill in shaded areas.
Operator: Fill in other items.

Form W-15
Cementing Report
Rev. 4/1/83
483-045

RAILROAD COMMISSION OF TEXAS
Oil and Gas Division

| | | | |
|--|-------------------------------|-----------------------------------|------------------------------------|
| 1. Operator's Name (As shown on Form P-5, Organization Report) Warren American Oil Co., LLC | 2. RRC Operator No. 897722 | 3. RRC District No. 7C | 4. County of Well Site Crockett |
| 5. Field Name (Wildcat or exactly as shown on RRC records) Farmer (San Andres) | | 6. API No. 42-10542254 | 7. Drilling Permit No. 806870 |
| 8. Lease Name University of Texas 245 | 9. Rule 37 Case No. | 10. Oil Lease/Gas ID No. 09705 | 11. Well No. 5 |

| CASING CEMENTING DATA: | | SURFACE CASING | INTER-MEDIATE CASING | PRODUCTION CASING | | MULTI-STAGE CEMENTING PROCESS | |
|---|---------------------------------------|----------------|----------------------|-------------------|---------------------------|-------------------------------|------|
| | | | | Single String | Multiple Parallel Strings | Tool | Shoe |
| 12. Cementing Date | | | | 8-12-15 | | | |
| 13. •Drilled hole size | | | | 7 7/8 | | | |
| •Est. % wash or hole enlargement | | | | | | | |
| 14. Size of casing (In. O.D.) | | | | 5 1/2 | | | |
| 15. Top of liner (ft.) | | | | | | | |
| 16. Setting depth (ft.) | | | | 2298 | | | |
| 17. Number of centralizers used | | | | | | | |
| 18. Hrs. waiting on cement before drill-out | | | | | | | |
| 1st Slurry | 19. API cement used: No. of sacks ▶ | | | 110 | | | |
| | Class ▶ | | | c-lite | | | |
| | Additives ▶ | | | cello | | | |
| 2nd Slurry | No. of sacks ▶ | | | 150 | | | |
| | Class ▶ | | | c | | | |
| | Additives ▶ | | | cc,cello | | | |
| 3rd Slurry | No. of sacks ▶ | | | | | | |
| | Class ▶ | | | | | | |
| | Additives ▶ | | | | | | |
| 1st | 20. Slurry pumped: Volume (cu. ft.) ▶ | | | 220 | | | |
| | Height (ft.) ▶ | | | 1262 | | | |
| 2nd | Volume (cu. ft.) ▶ | | | 198 | | | |
| | Height (ft.) ▶ | | | 1132 | | | |
| 3rd | Volume (cu. ft.) ▶ | | | | | | |
| | Height (ft.) ▶ | | | | | | |
| Total | Volume (cu. ft.) ▶ | | | 418 | | | |
| | Height (ft.) ▶ | | | 2394 | | | |
| 21. Was cement circulated to ground surface (or bottom of cellar) outside casing? | | | | no | | | |
| 22. Remarks | | | | | | | |

OVER

| CEMENTING TO PLUG AND ABANDON | PLUG # 1 | PLUG # 2 | PLUG # 3 | PLUG # 4 | PLUG # 5 | PLUG # 6 | PLUG # 7 | PLUG # 8 |
|---|----------|----------|----------|----------|----------|----------|----------|----------|
| 23. Cementing date | | | | | | | | |
| 24. Size of hole or pipe plugged (in.) | | | | | | | | |
| 25. Depth to bottom of tubing or drill pipe (ft.) | | | | | | | | |
| 26. Sacks of cement used (each plug) | | | | | | | | |
| 27. Slurry volume pumped (cu. ft.) | | | | | | | | |
| 28. Calculated top of plug (ft.) | | | | | | | | |
| 29. Measured top of plug, if tagged (ft.) | | | | | | | | |
| 30. Slurry wt. (lbs/gal) | | | | | | | | |
| 31. Type cement | | | | | | | | |

CEMENTER'S CERTIFICATE: I declare under penalties prescribed in Sec. 91.143, Texas Natural Resources Code, that I am authorized to make this certification, that the cementing of casing and/or the placing of cement plugs in this well as shown in the report was performed by me or under my supervision, and that the cementing data and facts presented on both sides of this form are true, correct, and complete, to the best of my knowledge. This certification covers cementing data only.

Debi Renee BASIC ENERGY SERVICES [Signature]
Name and title of cementer's representative Cementing Company Signature
P. O. Box 1519 Eastland, TX 76448 254-442-2200 8-12-15
Address City, State, Zip Code Tel.: Area Code Number Date: mo. day yr.

OPERATOR'S CERTIFICATE: I declare under penalties prescribed in Sec. 91.143, Texas Natural Resources Code, that I am authorized to make this certification, that I have knowledge of the well data and information presented in this report, and that data and facts presented on both sides of this form are true, correct, and complete, to the best of my knowledge. This certification covers all well data.

John Burroughs V.P. Operations [Signature]
Typed or printed name of operator's representative Title Signature
P.O. Box 470372 Tulsa OK 74147 918-481-7925 10/22/15
Address City, State, Zip Code Tel.: Area Code Number Date: mo. day yr.

Instructions to Form W-15, Cementing Report

IMPORTANT: Operators and cementing companies must comply with the requirements of the Commission's Statewide Rules 8 (Water Protection), 13 (Casing, Cementing, Drilling, and Completion), and 14 (Well Plugging). For offshore operations, see the requirements of Rule 13 (c).

A. What to file. An operator should file an original and one copy of the completed Form W-15 for each cementing company used on a well. The cementing of different casing strings on a well by one cementing company may be reported on one form. Form W-15 should be filed with the following:

- An initial oil or gas completion report, Form W-2 or G-1, as required by Statewide or special field rules;
- Form W-4, Application for Multiple Completion, if the well is a multiple parallel casing completion; and
- Form W-3, Plugging Record, unless the W-3 is signed by the cementing company representative. When reporting dry holes, operators must complete Form W-15, in addition to Form W-3, to show any casing cemented in the hole.

B. Where to file. The appropriate Commission District Office for the county in which the well is located.

C. Surface casing. An operator must set and cement sufficient surface casing to protect all usable-quality water strata, as defined by the Texas Department of Water Resources, Austin. Before drilling a well in any field or area in which no field rules are in effect or in which surface casing requirements are not specified in the applicable rules, an operator must obtain a letter from the Department of Water Resources stating the protection depth. Surface casing should not be set deeper than 200 feet below the specified depth without prior approval from the Commission.

D. Centralizers. Surface casing must be centralized at the shoe, above and below a stage collar or diverting tool, if run, and through usable-quality water zones. In nondeviated holes, a centralizer must be placed every fourth joint from the cement shoe to the ground surface or to the bottom of the cellar. All centralizers must meet API specifications.

E. Exceptions and alternative casing programs. The District Director may grant an exception to the requirements of Statewide Rule 13. In a written application, an operator must state the reason for the requested exception and outline an alternate program for casing and cementing through the protection depth for strata containing usable-quality water. The District Director may approve, modify, or reject a proposed program. An operator must obtain approval of any exception before beginning casing and cementing operations.

F. Intermediate and production casing. For specific technical requirements, operators should consult Statewide Rule 13 (b) (3) and (4).

G. Plugging and abandoning. Cement plugs must be placed in the wellbore as required by Statewide Rule 14. The District Director may require additional cement plugs. For onshore or inland wells, a 10-foot cement plug must be placed in the top of the well, and the casing must be cut off three feet below the ground surface. All cement plugs, except the top plug, must have sufficient slurry volume to fill 100 feet of hole, plus ten percent for each 1,000 feet of depth from the ground surface to the bottom of the plug.

To plug and abandon a well, operators must use only cementers approved by the Director of Field Operations. Cementing companies, service companies, or operators can qualify as approved cementers by demonstrating that they are able to mix and pump cement in compliance with Commission rules and regulations.

Form W-12
(1-1-71)
FOD1296

| | | |
|--|---|--|
| <p align="center">INCLINATION REPORT (One Copy Must Be Filed With Each Completion Report)</p> | | 6. RRC District 7C |
| | | 7. RRC Lease Number. (Oil completions only) 09705 |
| 1. FIELD NAME (as per RRC Records or Wildcat) Farmer (San Andres) | 2. LEASE NAME University of Texas 245 | 8. Well Number 5 |
| 3. OPERATOR Warren American Oil Company, LLC | | 9. RRC Identification Number (Gas completions only) |
| 4. ADDRESS P.O. Box 470372 Tulsa, Oklahoma 74147 | | |
| 5. LOCATION (Section, Block, and Survey) 14 miles SE direction from Big Lake | | 10. County Crockett |

RECORD OF INCLINATION

[illegible]

If additional space is needed, use the reverse side of this form.

17. Is any information shown on the reverse side of this form? ☐ yes ☒ no

18. Accumulative total displacement of well bore at total depth of 2313 feet = 16.19 feet.

*19. Inclination measurements were made in - ☐ Tubing ☐ Casing ☐ Open hole ☒ Drill Pipe

20. Distance from surface location of well to the nearest lease line..... 350 feet.

21. Minimum distance to lease line as prescribed by field rules 330 feet.

22. Was the subject well at any time intentionally deviated from the vertical in any manner whatsoever? No

(If the answer to the above question is "yes," attach written explanation of the circumstances.)

INCLINATION DATA CERTIFICATION

I declare under penalties prescribed in Sec. 91.143, Texas Natural Resources Code, that I am authorized to make this certification, that I have personal knowledge of the inclination data and facts placed on both sides of this form and that such data and facts are true, correct, and complete to the best of my knowledge. This certification covers all data as indicated by asterisks (*) by the item numbers on this form.

James R. Phillips

Signature of Authorized Representative
James R. Phillips, Member

Name of Person and Title (type or print)

Blue Line Drilling Co., LLC

Name of Company

Telephone: (325) 653-1891

Area Code

OPERATOR CERTIFICATION

I declare under penalties prescribed in Sec. 91.143, Texas Natural Resources Code, that I am authorized to make this certification, that I have personal knowledge of all information presented in this report, and that all data presented on both sides of this form are true, correct, and complete to the best of my knowledge. This certification covers all data and information presented herein except information data as indicated by asterisks (*) by the item numbers on this form.

John E. Kelly

Signature of Authorized Representative

John Bueroughs, Vice President Operations

143000: 000000

Warren American B. I. Co. LLC
Operator

Telephone: 918 1481-7925

Area Code

Railroad Commission Use Only:

Approved By: _____ Title: _____ Date: _____

* Designates items certified by company that conducted the inclination surveys.

RECORD OF INCLINATION (Continued from reverse side)

[illegible]

If additional space is needed, attach separate sheet and check here. ☐

REMARKS:

- INSTRUCTIONS -

An inclination survey made by persons or concerns approved by the Commission shall be filed on a form prescribed by the Commission for each well drilled or deepened with rotary tools or when, as a result of any operation, the course of the well is changed. No inclination survey is required on wells that are drilled and completed as dry holes that are plugged and abandoned. (Inclination surveys are required on re-entry of abandoned wells.) Inclination surveys must be made in accordance with the provisions of Statewide Rule 11.

This report shall be filed in the District Office of the Commission for the district in which the well is drilled, by attaching one copy to each appropriate completion for the well. (except Plugging Report)

The Commission may require the submittal of the original charts, graphs, or discs, resulting from the surveys.

RAILROAD COMMISSION OF TEXAS

Oil and Gas Division

ELECTRIC LOG
STATUS REPORT

FORM L-1

Tracking No.: 144934

This facsimile L-1 was generated electronically from data submitted to the RRC.

Instructions

When to File Form L-1:

- with Forms G-1, W-2, and GT-1 for new and deepened gas, oil, and geothermal wells
- with Form W-3 for plugged dry holes
- when sending in a log which was held under a request for confidentiality and the period for confidentiality has not yet expired.

When is Form L-1 NOT required:

- with Forms W-2, G-1, and GT-1 filed for injection wells, disposal wells, water supply wells, service wells, re-test wells, re-classifications, and plugbacks of oil, gas or geothermal wells
- with Form W-3 for plugging of other than a dry hole

Where to File Form L-1:

- with the appropriate Commission district office

Filling out Form L-1:

- Section I and the signature section must be filled out for all wells
- complete only the appropriate part of Section II

Type of log required:

- any wireline survey run for the purpose of obtaining lithology, porosity, or resistivity information
- no more than one such log is required but it must be of the subject well
- if such log is NOT run on the subject well, do NOT substitute any other type of log; just select Section II, Part A below

SECTION I. IDENTIFICATION

| | | |
|--|-------------------------------|--------------------------------|
| Operator Name: WARREN AMERICAN OIL COMPANY, LLC | District No. 7C | Completion Date: 09/11/2015 |
| Field Name FARMER (SAN ANDRES) | Drilling Permit No. 806870 | |
| Lease Name UNIVERSITY OF TEXAS - 245 | Lease/ID No. 09705 | Well No. 5 |
| County CROCKETT | API No. 42- 105-42254 | |

SECTION II. LOG STATUS (Complete either A or B)

☐ A. BASIC ELECTRIC LOG NOT RUN

☒ B. BASIC ELECTRIC LOG RUN. (Select one)

- ☒ 1. Confidentiality is requested and a copy of the header for each log that has been run on the well is attached.
- ☐ 2. Confidentiality already granted on basic electric log covering this interval (applicable to deepened wells only).
- ☐ 3. Basic electric log covering this interval already on file with Commission (applicable to deepened wells only).
- ☐ 4. Log attached to (select one):

☐ (a) Form L-1 (this form). If the company/lease name on log is different from that shown in Section I, please enter name on log here: _____

Check here if attached log is being submitted after being held confidential. ☐

☐ (b) Form P-7, Application for Discovery Allowable and New Field Designation.

☐ (c) Form W-4, Application for Multiple Completion:

Lease or ID No(s). _____

Well No(s). _____

Cheryl Dixon

Signature

WARREN AMERICAN OIL COMPANY, LLC

Name (print)

Land Manager

Title

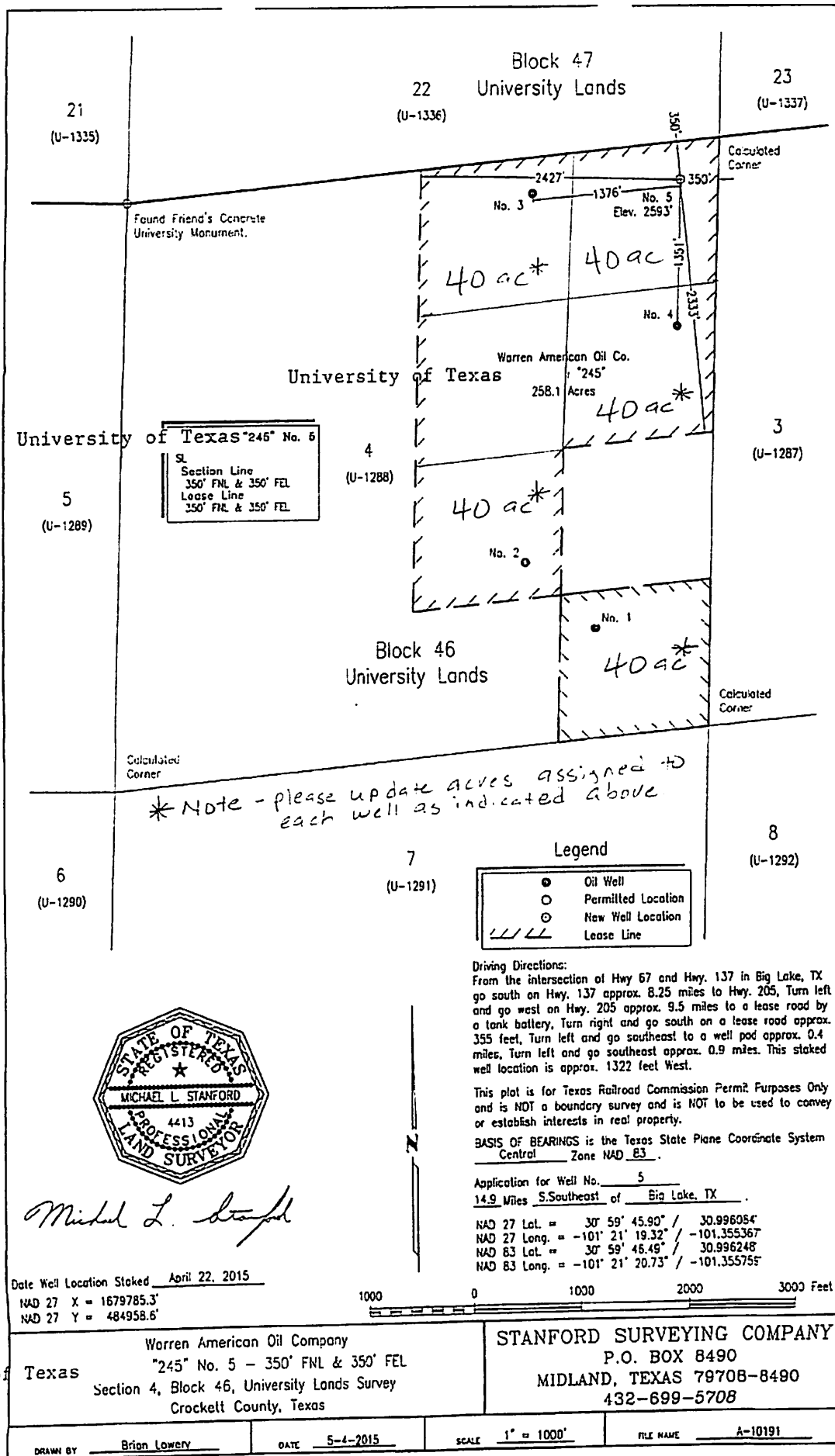
(918) 481-7942

Phone

10/22/2015

Date

-FOR RAILROAD COMMISSION USE ONLY-



University of Texas