

RAILROAD COMMISSION OF TEXAS

Oil and Gas Division

Tracking No.: 113795

Status: Submitted

This facsimile W-2 was generated electronically
from data submitted to the RRC.

API No. 42- 105-42018

7. RRC District No.
7C8. RRC Lease No.
17662

Oil Well Potential Test, Completion or Recompletion Report, and Log

1. FIELD NAME (as per RRC Records or Wildcat)
HOLT RANCH (CONSOLIDATED)2. LEASE NAME
UNIVERSITY 459. Well No.
2247HC3. OPERATOR'S NAME (Exactly as shown on Form P-5, Organization Report)
APPROACH OPERATING LLCRRC Operator No.
02862510. County of well site
CROCKETT

4. ADDRESS

ONE RIDGMAR CENTRE 6500 WEST FREEWAY SUITE 800 FORT WORTH, TX 76116-0000

11. Purpose of filing

Initial Potential ☒Retest ☐Reclass ☐Well record only
(Explain in remarks) ☐

6a. Location (Section, Block, and Survey)

22 , 45 , UNIVERSITY LAND

6b. Distance and direction to nearest town in this county.

OZONA

12. If workover or reclass, give former field (with reservoir) & Gas ID or oil lease no.
FIELD & RESERVOIRGAS ID or
OIL LEASE #Oil-O
Gas-G

Well #

N/A

13. Type of electric or other log run
None14. Completion or recompletion date
07/17/2014

SECTION I- POTENTIAL TEST DATA IMPORTANT: Test should be for 24 hours unless otherwise specified infield rules.

15. Date of test 08/01/2014	16. No. of hours tested 24	17. Production method (Flowing, Gas Lift, Jetting, Pumping- Size & Type of pump) Gas Lift			18. Choke size 1.0
19. Production during Test Period	Oil - BBLS 290.0	Gas - MCF 1094	Water - BBLS 1514	Gas - Oil Ratio 3772	Flowing Tubing Pressure 200.0 PSI
20. Calculated 24- Hour Rate	Oil - BBLS 290.0	Gas - MCF 1094	Water - BBLS 1514	Oil Gravity-API-60° 42.0	Casing Pressure 810.0 PSI
21. Was swab used during this test? Yes <input type="checkbox"/> No <input checked="" type="checkbox"/>		22. Oil produced prior to test (New & Reworked wells) 2228.0			23. Injection Gas-Oil Ratio
REMARKS: N/A					

INSTRUCTIONS: File an original and one copy of the completed Form W-2 in the appropriate RRC District Office within 30 days after completing a well and within 10 days after a potential test. If an operator does not properly report the results of a potential test within the 10-day period, the effective date of the allowable assigned to the well will not extend back more than 10 days before the W-2 was received in the District Office. (Statewide Rules 16 and 51) To report a completion or recompletion, fill in both sides of this form. To report a retest, fill in only the front side.

WELL TESTERS CERTIFICATION

I declare under penalties prescribed in Sec. 91.143, Texas Natural Resources Code, that I conducted or supervised this test by observation of (a) meter readings or (b) the top and bottom gauges of each tank into which production was run during the test. I further certify that the potential test data shown above is true, correct, and complete, to the best of my knowledge.

Signature: Well Tester

Name of Company

RRC Representative

OPERATOR'S CERTIFICATION

I declare under penalties prescribed in Sec. 91.143, Texas Natural Resources Code, that I am authorized to make this report, that this report was prepared by me or under my supervision and direction, and that data and facts stated therein are true, correct and complete, to the best of my knowledge.

Type or printed name of operator's representative

(817) 989-9000 EXT 2143

08/27/2014

Telephone: Area Code

Number

Month Day Year

SR Regulatory Specialist

Title of Person

Carol Adler

Signature

SECTION III										DATA ON WELL COMPLETION AND LOG (Not Required on Retest)									
24. Type of Completion New Well <input checked="" type="checkbox"/> Deepening <input type="checkbox"/> Plug Back <input type="checkbox"/> Other <input type="checkbox"/>										25. Permit to Drill, Plug Back or Deepen DATE 04/12/2014 PERMIT NO. 781695 Rule 37 Exception CASE NO. Water Injection Permit PERMIT NO. Salt Water Disposal Permit PERMIT NO. Other PERMIT NO.									
26. Notice of Intention to Drill this well was filed in Name of APPROACH OPERATING LLC																			
27. Number of producing wells on this lease in this field (reservoir) including this well 90					28. Total number of acres in this lease 14981.5														
29. Date Plug Back, Deepening, Workover or Drilling Operations: 05/14/2014		Commenced 05/14/2014		Completed 06/03/2014		30. Distance to nearest well, Same Lease & Reservoir 269.0													
31. Location of well, relative to nearest lease boundaries 8603.0 Feet From South Line and 6411.0 Feet from East Line of the UNIVERSITY 45 Lease																			
32. Elevation (DF, RKB, RT, GR ETC.) 2602 GL					33. Was directional survey made other than inclination (Form W-12)? <input checked="" type="checkbox"/> Yes <input type="checkbox"/> No														
34. Top of Pay 6502 MD:12667		35. Total Depth 6501 MD:12564		36. P. B. Depth 6501 MD:12564		37. Surface Casing Determined by Field Rules <input type="checkbox"/> Recommendation of T.D.W.R. Railroad Commission (Special) <input checked="" type="checkbox"/>		Dt. of Letter 03/26/2014											
38. Is well multiple completion? <input type="checkbox"/> Yes <input checked="" type="checkbox"/> No																			
39. If multiple completion, list all reservoir names (completions in this well) and Oil Lease or Gas ID No. FIELD & RESERVOIR N/A										GAS ID or OIL LEASE #		Oil-G Gas-G		Well #					
40. Intervals Drilled by: Rotary Tools <input checked="" type="checkbox"/> Cable Tools		41. Name of Drilling Contractor								42. Is Cementing Affidavit Attached? <input checked="" type="checkbox"/> Yes <input type="checkbox"/> No									
43. CASING RECORD (Report All Strings Set in Well)																			
CASING SIZE	WT #/FT.	DEPTH SET	MULTISTAGE TOOL DEPTH	TYPE & AMOUNT CEMENT (sacks)	HOLE SIZE	TOP OF CEMENT	SLURRY VOL. cu. ft.												
9 5/8		1258		CLASS C 838	12 1/4	0	1003.0												
5 1/2		12650		CLASS H 2457	8 3/4	658	3766.0												
44. LINER RECORD																			
Size		Top		Bottom		Sacks Cement		Screen											
N/A																			
45. TUBING RECORD																			
Size	Depth Set	Packer Set	46. Producing Interval (this completion) Indicate depth of perforation or open hole																
2 7/8	6637	6629	From L1 7007 To 12545																
			From To																
			From To																
			From To																
47. ACID, SHOT, FRACTURE, CEMENT SQUEEZE, ETC.																			
Depth Interval				Amount and Kind of Material Used															
7007.0		12545.0		151754BBLS FLUID;84000GALS15%HCL;3117161#100MESH;3307368#40/70															
48. FORMATION RECORD (LIST DEPTHS OF PRINCIPAL GEOLOGICAL MARKERS AND FORMATION TOPS)																			
Formations		Depth		Formations		Depth													
CANYON		0.0 MD: 0.0		QUEEN		1169.0 MD: 1169.0													
STRAWN		0.0 MD: 0.0		SAN ANDRES		1635.0 MD: 1635.0													
DEVONIAN		0.0 MD: 0.0		LEONARD		4172.0 MD: 4172.0													
ELLENBURGER		0.0 MD: 0.0		WOLFCAMP		5597.0 MD: 5604.0													
REMARKS: N/A																			

Cementer: Fill in shaded areas.
Operator: Fill in other items.

RAILROAD COMMISSION OF TEXAS
Oil and Gas Division

Form W-15
Cementing Report
Rev. 4/1/83
483-045

1. Operator's Name (As shown on Form P-5, Organization Report) Approach Operating, LLC		2. RRC Operator No. 028625	3. RRC District No. 7C	4. County of Well Site Crockett
5. Field Name (Wildcat or exactly as shown on RRC records) HOLT BANCH (CONSOLIDATED)			6. API No. 42-105-42018	7. Drilling Permit No. 781695
8. Lease Name University 45		9. Rule 37 Case No.	10. Oil Lease/Gas ID No. 17662	11. Well No. 2247HC

CASING CEMENTING DATA:			SURFACE CASING	INTER-MEDIATE CASING	PRODUCTION CASING		MULTI-STAGE CEMENTING PROCESS	
					Single String	Multiple Parallel Strings	Tool	Shoe
12. Cementing Date			5/16/14					
13. • Drilled hole size			12 1/4					
• Est. % wash or hole enlargement								
14. Size of casing (in. O.D.)			9 5/8					
15. Top of liner (ft.)								
16. Setting depth (ft.)			1258					
17. Number of centralizers used			10					
18. Hrs. waiting on cement before drill-out			24					
1st Slurry	19. API cement used: No. of sacks ▶		409					
	Class 55 ▶		65/35/6 C					
	Additives ▶		See Remarks					
2nd Slurry	No. of sacks ▶		179					
	Class ▶		C					
	Additives ▶		See Remarks					
3rd Slurry	No. of sacks ▶							
	Class ▶							
	Additives ▶							
1st	20. Slurry pumped: Volume (cu. ft.) ▶		765					
	Height (ft.) ▶		2443'					
2nd	Volume (cu. ft.) ▶		238					
	Height (ft.) ▶		760'					
3rd	Volume (cu. ft.) ▶							
	Height (ft.) ▶							
Total	Volume (cu. ft.) ▶		1003 ✓					
	Height (ft.) ▶		3203' ✓					
21. Was cement circulated to ground surface (or bottom of cellar) outside casing?			No					
22. Remarks Cement Additives: Lead- 6% gel + 5% Salt + 25 pps PFA; .2% C-41P; .25pps Celloflake Tail – Neat								

OVER ►

CEMENTING TO PLUG AND ABANDON	PLUG # 1	PLUG # 2	PLUG # 3	PLUG # 4	PLUG # 5	PLUG # 6	PLUG # 7	PLUG # 8
23. Cementing Date								
24. Size of hole or pipe plugged (in.)								
25. Depth to bottom of tubing or drill pipe (ft.)								
26. Sacks of cement used (each plug)								
27. Slurry volume pumped (cu. ft.)								
28. Calculated top of plug (ft.)								
29. Measured top of plug, if tagged (ft.)								
30. Slurry wt. (lbs/gal)								
31. Type cement								

CEMENTER'S CERTIFICATE: I declare under penalties prescribed in Sec. 91.143, Texas Natural Resources Code, that I am authorized to make this certification, that the cementing of casing and/or the placing of cement plugs in the well as shown in this report was performed by me or under my supervision, and that the cementing data and facts presented on both sides of this form are true, correct, and complete, to the best of my knowledge. This certification covers cementing data only.

Misty Webb, Staff Assistant

Basic Energy Services

Name and title of cementer's representative

Cementing Company

Misty Webb
Signature

P O Box 10451

Midland

TX

79702

432-687-1994

05/27/14

Address

City

State

Zip Code

Tel.: Area Code

Number

Date: mo. day yr.

OPERATOR'S CERTIFICATE: I declare under penalties prescribed in Sec. 91.143, Texas Natural Resources Code, that I am authorized to make this certification, that I have knowledge of the well data and information presented in this report, and that the data and facts presented on both sides of this form are true, correct, and complete, to the best of my knowledge. This certification covers all well data.

Typed or printed name of operator's representative

Carol Adler
Sr. Regulatory Specialist
6500 W. Freeway, Ste. 800
Fort Worth, Texas 76116
817-546-8483

Signature

Carol Adler

Address

City

State

Zip Code

Tel.: Area Code

Number

Date: mo. day yr.

8/25/2014

Instructions to Form W-15, Cementing Report

IMPORTANT: Operators and cementing companies must comply with the requirements of the Commission's Statewide Rules 8 (Water Protection), 13 (Casing, Cementing, Drilling, and Completion), and 14 (Well Plugging). For offshore operations, see the requirements of Rule 13 (c).

A. What to file. An operator should file an original and one copy of the completed Form W-15 for each cementing company used on a well. The cementing of different casing strings on a well by one cementing company may be reported on one form. Form W-15 should be filed with the following:

- An initial oil or gas completion report, **Form W-2 or G-1**, as required by Statewide or special field rules;
- **Form W-4**, Application for Multiple Completion, if the well is a multiple parallel casing completion; and
- **Form W-3**, Plugging Record, unless the W-3 is signed by the cementing company representative. When reporting dry holes, operators must complete Form W-15, in addition to Form W-3, to show any casing cemented in the hole.

B. Where to file. The appropriate Commission District Office for the country in which the well is located.

C. Surface casing. An operator must set and cement sufficient surface casing to protect all usable-quality water strata, as defined by the Texas Department of Water Resources, Austin. Before drilling a well in any field or area in which no field rules are in effect or in which surface casing requirements are not specified in the applicable rules, an operator must obtain a letter from the Department of Water Resources stating the protection depth. Surface casing should not be set deeper than 200 feet below the specified depth without prior approval from the Commission.

D. Centralizers. Surface casing must be centralized at the shoe, above and below a stage collar or diverting tool, if run, and through usable-quality water zones. In nondeviated holes, a centralizer must be placed every fourth joint from the cement shoe to the ground surface or to the bottom of the cellar. All centralizers must meet API specifications.

E. Exceptions and alternative casing programs. The District Director may grant an exception to the requirements of Statewide Rule 13. In a written application, an operator must state the reason for the requested exception and outline an alternate program for casing and cementing through the protection depth for strata containing usable-quality water. The District Director may approve, modify, or reject a proposed program. An operator must obtain approval of any exception before beginning casing and cementing operations.

F. Intermediate and production casing. For specific technical requirements, operators should consult Statewide Rule 13 (b) (3) and (4).

G. Plugging and abandoning. Cement plugs must be placed in the wellbore as required by Statewide Rule 14. The District Director may require additional cement plugs. For onshore or inland wells, a 10-foot cement plug must be placed in the top of the well, and the casing must be cut off three feet below the ground surface. All cement plugs, except the top plug, must have sufficient slurry volume to fill 100 feet of hole, plus ten percent for each 1,000 feet of depth from the ground surface to the bottom of the plug.

To plug and abandon a well, operators must use only cementers approved by the Director of Field Operations. Cementing companies, service companies, or operators can qualify as approved cementers by demonstrating that they are able to mix and pump cement in compliance with Commission rules and regulations.

Cementer: Fill in shaded areas.
Operator: Fill in other items.

RAILROAD COMMISSION OF TEXAS
Oil and Gas Division

Form W-15
Cementing Report
Rev. 4/1/83
483-045

1. Operator's Name (As shown on Form P-5, Organization Report) Approach Operating, LLC		2. RRC Operator No. 028625	3. RRC District No. 7C	4. County of Well Site Crockett
5. Field Name (Wildcat or exactly as shown on RRC records) HOLT RANCH (CONSOLIDATED)			6. API No. 42-105-42018	7. Drilling Permit No. 781695
8. Lease Name University 45		9. Rule 37 Case No.	10. Oil Lease/Gas ID No.	11. Well No. 2247HC

CASING CEMENTING DATA:			SURFACE CASING	INTER-MEDIATE CASING	PRODUCTION CASING		MULTI-STAGE CEMENTING PROCESS	
					Single String	Multiple Parallel Strings	Tool	Shoe
12. Cementing Date					6/4/14			
13. • Drilled hole size					8 3/4			
• Est. % wash or hole enlargement								
14. Size of casing (in. O.D.)					5 1/2			
15. Top of liner (ft.)								
16. Setting depth (ft.)					12650			
17. Number of centralizers used					193			
18. Hrs. waiting on cement before drill-out					✓			
1st Slurry	19. API cement used: No. of sacks	▶			610			
	Class	▶			50/50 POZ H			
	Additives	▶			See Remarks			
2nd Slurry	No. of sacks	▶			1847			
	Class	▶			60/40 POZ H			
	Additives	▶						
3rd Slurry	No. of sacks	▶						
	Class	▶						
	Additives	▶						
1st	20. Slurry pumped: Volume (cu. ft.)	▶			1476			
	Height (ft.)	▶			5843'			
2nd	Volume (cu. ft.)	▶			2290			
	Height (ft.)	▶			9066'			
3rd	Volume (cu. ft.)	▶						
	Height (ft.)	▶						
Total	Volume (cu. ft.)	▶			3766 ✓			
	Height (ft.)	▶			14909' ✓			
21. Was cement circulated to ground surface (or bottom of cellar) outside casing?					Yes			
22. Remarks Lead with 610sx 50/50 POZ Class H with 10% gel + 5% Salt + .5% C-20 + 4pps Kol Seal + .2% C-41P Tail with 1847 sx 60/40 POZ Class H with 5% gel + 5pps STE + .6% C-47A + .2% C-49 + .25% C-20 Circulated 65sx to Surface.								

CEMENTING TO PLUG AND ABANDON	PLUG # 1	PLUG # 2	PLUG # 3	PLUG # 4	PLUG # 5	PLUG # 6	PLUG # 7	PLUG # 8
23. Cementing Date								
24. Size of hole or pipe plugged (in.)								
25. Depth to bottom of tubing or drill pipe (ft.)								
26. Sacks of cement used (each plug)								
27. Slurry volume pumped (cu. ft.)								
28. Calculated top of plug (ft.)								
29. Measured top of plug, if tagged (ft.)								
30. Slurry wt. (lbs/gal)								
31. Type cement								

CEMENTER'S CERTIFICATE: I declare under penalties prescribed in Sec. 91.143, Texas Natural Resources Code, that I am authorized to make this certification, that the cementing of casing and/or the placing of cement plugs in the well as shown in this report was performed by me or under my supervision, and that the cementing data and facts presented on both sides of this form are true, correct, and complete, to the best of my knowledge. This certification covers cementing data only.

Misty Webb, Staff Assistant

Name and title of cementer's representative

Basic Energy Services

Cementing Company

Misty Webb
Signature

P O Box 10451

Address

Midland

City

TX

State

79702

Zip Code

432-687-1994

Tel.: Area Code

Number

6/9/14

Date: mo. day yr.

OPERATOR'S CERTIFICATE: I declare under penalties prescribed in Sec. 91.143, Texas Natural Resources Code, that I am authorized to make this certification, that I have knowledge of the well data and information presented in this report, and that the data and facts presented on both sides of this form are true, correct, and complete, to the best of my knowledge. This certification covers all well data.

Carol Adler

Typed or printed name of operator's representative

**Sr. Regulatory Specialist
6500 W. Freeway, Ste. 800
Fort Worth, Texas 76116
817-546-8483**

Carol Adler
Signature

Address

City State Zip Code

Tel.: Area Code

Number

Date: mo. day yr.

Instructions to Form W-15, Cementing Report

IMPORTANT: Operators and cementing companies must comply with the requirements of the Commission's Statewide Rules 8 (Water Protection), 13 (Casing, Cementing, Drilling, and Completion), and 14 (Well Plugging). For offshore operations, see the requirements of Rule 13 (c).

A. What to file. An operator should file an original and one copy of the completed Form W-15 for each cementing company used on a well. The cementing of different casing strings on a well by one cementing company may be reported on one form. Form W-15 should be filed with the following:

- An initial oil or gas completion report, **Form W-2 or G-1**, as required by Statewide or special field rules;
- **Form W-4**, Application for Multiple Completion, if the well is a multiple parallel casing completion; and
- **Form W-3**, Plugging Record, unless the W-3 is signed by the cementing company representative. When reporting dry holes, operators must complete Form W-15, in addition to Form W-3, to show any casing cemented in the hole.

B. Where to file. The appropriate Commission District Office for the country in which the well is located.

C. Surface casing. An operator must set and cement sufficient surface casing to protect all usable-quality water strata, as defined by the Texas Department of Water Resources, Austin. Before drilling a well in any field or area in which no field rules are in effect or in which surface casing requirements are not specified in the applicable rules, an operator must obtain a letter from the Department of Water Resources stating the protection depth. Surface casing should not be set deeper than 200 feet below the specified depth without prior approval from the Commission.

D. Centralizers. Surface casing must be centralized at the shoe, above and below a stage collar or diverting tool, if run, and through usable-quality water zones. In nondeviated holes, a centralizer must be placed every fourth joint from the cement shoe to the ground surface or to the bottom of the cellar. All centralizers must meet API specifications.

E. Exceptions and alternative casing programs. The District Director may grant an exception to the requirements of Statewide Rule 13. In a written application, an operator must state the reason for the requested exception and outline an alternate program for casing and cementing through the protection depth for strata containing usable-quality water. The District Director may approve, modify, or reject a proposed program. **An operator must obtain approval of any exception before beginning casing and cementing operations.**

F. Intermediate and production casing. For specific technical requirements, operators should consult Statewide Rule 13 (b) (3) and (4).

G. Plugging and abandoning. Cement plugs must be placed in the wellbore as required by Statewide Rule 14. The District Director may require additional cement plugs. For onshore or inland wells, a 10-foot cement plug must be placed in the top of the well, and the casing must be cut off three feet below the ground surface. All cement plugs, except the top plug, must have sufficient slurry volume to fill 100 feet of hole, plus ten percent for each 1,000 feet of depth from the ground surface to the bottom of the plug.

To plug and abandon a well, operators must use only cementers approved by the Director of Field Operations. Cementing companies, service companies, or operators can qualify as approved cementers by demonstrating that they are able to mix and pump cement in compliance with Commission rules and regulations.

Groundwater
Advisory Unit

GROUNDWATER PROTECTION DETERMINATION

Form GW-2

Date **March 26, 2014**

GAU File No. **15549**

***** EXPEDITED APPLICATION *****

API Number **10500000**

Attention: **CAROL ADLER**

RRC Lease No. **000000**

SC_028625_10500000_000000_15549.pdf

**APPROACH OPERATING LLC
6500 WEST FREEWAY
STE 8
FORT WORTH TX 76116**

--Measured--

1030 ft FEL

2105 ft FNL

MRL:SECTION

Digital Map Location:

X-coord/Long **101.23310**

Y-coord/Lat **30.93380**

Datum **83** Zone

P-5# 028625

County **CROCKETT**

Lease & Well No. **UNIVERSITY 45 #2243HB&PAD**

Purpose **ND**

Location **SUR-UL, A-U426, BLK-45, SEC-22, -- [TD=7800], [RRC 7C],**

To protect usable-quality groundwater at this location, the Groundwater Advisory Unit of the Railroad Commission of Texas recommends:

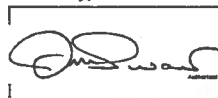
The interval from the land surface to a depth of 775 feet must be protected.

This recommendation is applicable to all wells drilled on this pad.

Note: Unless stated otherwise, this recommendation is intended to apply only to the subject well and not for area-wide use. This recommendation is intended for normal drilling, production, and plugging operations only. It does not apply to saltwater disposal operation into a nonproductive zone (RRC Form W-14).

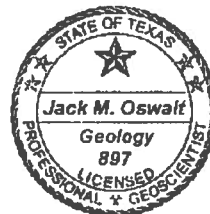
If you have any questions, please contact us at 512-463-2741, gau@rrc.state.tx.us, or by mail.

Sincerely,


Digitally signed by Jack Oswalt
DN: cn=US, st=TEXAS, l=Austin, o=Railroad
Commission of Texas, ou=Groundwater
Advisory Unit, cn=Jack Oswalt,
email=jack.oswalt@rrc.state.tx.us
Date: 2014.03.26 13:18:01 -05'00'

Jack M. Oswalt, P.G.

GEOLOGIST SEAL



Geologist, Groundwater Advisory Unit
Oil & Gas Division

The seal appearing on this document was authorized by Jack M. Oswalt on 3/26/2014
Note: Alteration of this electronic document will invalidate the digital signature.



RAILROAD COMMISSION OF TEXAS

OIL AND GAS DIVISION

June 6, 2013

Approach Operating, LLC
One Ridgeman Centre
6500 West Freeway Suite 800
Fort Worth, Texas 76116

Jim Melear

Re: Blanket Statewide Rule 13(b)2
Surface Casing Exception
Crockett County, Texas

Dear Operator:

Your company has been granted a one-year blanket exception to Statewide Rule 13(b)2 for all wells drilled in Crockett County, Texas. This exception authorizes you to set more than 200 feet of surface casing than required by the usable quality protection depth minimum requirement letter up to a maximum depth of 2100' feet from ground level. This exception is contingent upon compliance with all requirements found in Statewide Rule 13 and the following additional items:

1. This exception will be in effect until June 6, 2014.
2. An approved Railroad Commission drilling permit and usable quality fresh water protection depth letter are in hand prior to spudding well.
3. This exception is only granted for setting more surface casing than required. Alternate programs for setting less than specified amounts of surface casing will be reviewed on an individual well basis only.
4. An alternate casing program shall require the first string of casing set through the protection depth to be cemented in a manner that will effectively prevent the migration of any fluid to or from any stratum exposed to the wellbore outside this string of casing. The casing shall be cemented from the shoe to ground surface in a single stage, if feasible, or by a multi-stage process with the stage tool set at least 50 feet below the protection depth. **Due to the severe loss of circulation problems which occur in this area, the primary cement operation must consist of 100% excess of cement over calculated volumes, unless prior approval has been granted. If a basket is used, it shall be set no higher than 300' below ground level.**
5. Any alternate casing program shall include pumping sufficient cement to fill the annular space from the shoe or multi-stage tool to the ground surface. **If cement is not circulated to the ground surface or the bottom of the cellar, the operator shall run a temperature surface or cement bond log. After the top of cement outside the casing is determined, the operator or his representative shall contact the San Angelo District Office and obtain approval for the procedures to be used to perform any required additional cementing operations.** Upon completion of the well, a cementing report shall be filed with the Commission on the prescribed Form W-15 along with a copy of the temperature survey or bond log.

6. All Form W-15's reporting the cementing of surface casing are required to detail in remarks if cement doesn't circulate to the surface to fully explain what remedial cementing measures were performed. This shall include the top of cement found by bond log or temperature survey and the depth of any baskets placed in the well.
7. As required by all drilling permits issued by the Railroad Commission, it is the operator's responsibility to notify the appropriate Commission District Office, at least eight hours prior to running surface casing. This may be done by phone or fax.
8. Surface casing shall be centralized at the shoe, above and below a stage collar or diverting tool, if run, and through usable-quality water zones. In non-deviated holes, pipe centralization as follows is required: a centralizer shall be placed every fourth joint from the cement shoe to the ground surface or to the bottom of the cellar. All centralizers shall meet API spec 10D specifications. In deviated holes, the operator shall provide additional centralization.

Sincerely,

A handwritten signature in black ink, appearing to read "Barry W. Wood". The signature is fluid and cursive, with a prominent initial "B" and a long, sweeping underline.

Barry W. Wood, P.E.
District Director

RAILROAD COMMISSION OF TEXAS

Oil and Gas Division

ELECTRIC LOG
STATUS REPORT

FORM L-1

Tracking No.: 113795

This facsimile L-1 was generated electronically from data submitted to the RRC.

Instructions

When to File Form L-1:

- with Forms G-1, W-2, and GT-1 for new and deepened gas, oil, and geothermal wells
- with Form W-3 for plugged dry holes
- when sending in a log which was held under a request for confidentiality and the period for confidentiality has not yet expired.

When is Form L-1 NOT required:

- with Forms W-2, G-1, and GT-1 filed for injection wells, disposal wells, water supply wells, service wells, re-test wells, re-classifications, and plugbacks of oil, gas or geothermal wells
- with Form W-3 for plugging of other than a dry hole

Where to File Form L-1:

- with the appropriate Commission district office

Filling out Form L-1:

- Section I and the signature section must be filled out for all wells
- complete only the appropriate part of Section II

Type of log required:

- any wireline survey run for the purpose of obtaining lithology, porosity, or resistivity information
- no more than one such log is required but it must be of the subject well
- if such log is NOT run on the subject well, do NOT substitute any other type of log; just select Section II, Part A below

SECTION I. IDENTIFICATION

Operator Name: APPROACH OPERATING LLC	District No. 7C	Completion Date: 07/17/2014
Field Name HOLT RANCH (CONSOLIDATED)	Drilling Permit No. 781695	
Lease Name UNIVERSITY 45	Lease/ID No. 17662	Well No. 2247HC
County CROCKETT	API No. 42- 105-42018	

SECTION II. LOG STATUS (Complete either A or B)

☒ A. BASIC ELECTRIC LOG NOT RUN☐ B. BASIC ELECTRIC LOG RUN. (Select one)

- ☐ 1. Confidentiality is requested and a copy of the header for each log that has been run on the well is attached.
- ☐ 2. Confidentiality already granted on basic electric log covering this interval (applicable to deepened wells only).
- ☐ 3. Basic electric log covering this interval already on file with Commission (applicable to deepened wells only).
- ☐ 4. Log attached to (select one):

☐ (a) Form L-1 (this form). If the company/lease name on log is different from that shown in Section I, please enter name on log here: _____

Check here if attached log is being submitted after being held confidential. ☐

☐ (b) Form P-7, Application for Discovery Allowable and New Field Designation.

☐ (c) Form W-4, Application for Multiple Completion:

Lease or ID No(s). _____

Well No(s). _____

Carol Adler

Signature

Name (print)

SR Regulatory Specialist

Title

(817) 989-9000 EXT 2143

Phone

08/27/2014

Date

-FOR RAILROAD COMMISSION USE ONLY-

STATEMENT OF PRODUCTIVITY OF ACREAGE
ASSIGNED TO PRORATION UNITS

Form P-15

Tracking No.: 113795

This facsimile P-15 was generated electronically
from data submitted to the RRC.

The undersigned states that he is authorized to make this statement; that he has knowledge of the facts concerning the APPROACH OPERATING LLC ,

UNIVERSITY 45 , No. 2247HC ; that such well is
LEASE OPERATOR WELL

completed in the HOLT RANCH (CONSOLIDATED) Field, CROCKETT County,

Texas and that the acreage claimed, and assigned to such well for proration purposes as authorized by special rule and as shown on the attached certified plat embraces _____

150.0 acres which can reasonably be considered to be productive of hydrocarbons.

- CERTIFICATE

I declare under penalties prescribed in Sec. 91.143, Texas Natural Resources Code, that I am authorized to make this report, that this report was prepared by me or under my supervision and direction,

Date 08/27/2014 Signature Carol Adler

Telephone (817) 989-9000 EXT 2143 Title SR Regulatory Specialist
AREA CODE



RAILROAD COMMISSION OF TEXAS

1701 N. Congress
P.O. Box 12967
Austin, Texas 78701-2967

P-16 Data Sheet

Page 1

Rev. ___/2014

Acreage Designation

SECTION I. OPERATOR INFORMATION

Operator Name: APPROACH OPERATING, LLC

Operator P-5 No.: 028625

Operator Address: 6500 WEST FREEWAY, STE. 800

SECTION II. WELL INFORMATION

District No.: 7C

County: CROCKETT

Well No.: 834HB

API No.: 105-41996

Total Lease Acres: 14981.5

Drilling Permit No.: 780113

Lease Name: UNIVERSITY 45

Lease No.: 17662

Field Name: HOLT RANCH (CONSOLIDATED)

Field No.: 42341300

Filer is the owner or lessee, or has been authorized by the owner or lessee, of all or an undivided portion of the mineral estate under each tract for which filer is listed as operator below. For all leases operated by other entities, the number of assigned acres shown are reflected on current Commission records or the filer has been authorized by the current operator to change the assigned acreage of that operator as shown below.

SECTION III. LISTING OF ALL WELLS IN THE APPLIED-FOR FIELD ON THE SAME ACREAGE AS THE LEASE, POOLED UNIT, OR UNITIZED TRACT DESIGNATED IN SECTION II ABOVE BY FILER

RRC ID No. or Lease No.	Well No.	H-Horizontal D-Directional V-Vertical	Lease Name	API No.	Acres Assigned	Operator Name and Operator No. (if different from filing operator)
247079	3001	V	UNIVERSITY 45	105-40956	218.533	
249478	3002	V	UNIVERSITY 45	105-40968	218.533	
17662	3003	V	UNIVERSITY 45	105-40974	218.533	
247115	2001	V	UNIVERSITY 45	105-40937	178.000	
262396	2002	V	UNIVERSITY 45	105-41209	148.600	
17662	2003	V	UNIVERSITY 45	105-41315	36.000	
17662	2004	V	UNIVERSITY 45	105-41318	93.000	
17662	2005	V	UNIVERSITY 45	105-41320	35.000	
247078	2101	V	UNIVERSITY 45	105-40888	56.275	
247080	2102	V	UNIVERSITY 45	105-40908	56.275	
247117	2103	V	UNIVERSITY 45	105-40931	56.275	
256244	2104	V	UNIVERSITY 45	105-41043	56.275	
249475	2105	V	UNIVERSITY 45	105-40967	56.275	
249477	2106	V	UNIVERSITY 45	105-40971	56.275	
261177	2107	V	UNIVERSITY 45	105-41148	56.275	
260287	2108	V	UNIVERSITY 45	105-41150	56.275	
260294	2109	V	UNIVERSITY 45	105-41174	56.275	

Total Well Count >

89

13060.001

< A. Total Assigned Horiz. Acreage

14981.5

< C. Total Assigned Acreage

< Total Remaining Horiz. Acreage

0.0

< Total Remaining Acreage

1921.499

< B. Total Assigned Vert./Dir. Acreage

0.0

< Total Remaining Vert./Dir. Acreage

SECTION IV. REMARKS / PURPOSE OF FILING (see instructions)

ACREAGE LIST

Attach Additional Pages As Needed.

☐

No additional pages

☒

Additional Pages: 6 (No. of additional pages)

CERTIFICATION: I declare under penalties prescribed in Sec. 91.143, Texas Natural Resources Code, that this report was prepared by me or under my supervision or direction, that I am authorized to make this report, and that the information contained in this report is true, correct, and complete to the best of my knowledge.

Carol Adler

cadler@approachresources.com

Signature

Name and title (type or print)

Email (include email address only if you affirmatively consent to its public release)

6500 West Freeway, Ste. 800 Fort Worth, Texas 76116

817-989-9000

07/17/2014

Address

City,

State,

Zip Code

Tel: Area Code

Number

Date: mo. day yr.

**RAILROAD COMMISSION OF TEXAS**

1701 N. Congress
P.O. Box 12967
Austin, Texas 78701-2967

P-16 Data Sheet**Page 1**

Rev. ___/2014

Acreage Designation**SECTION I. OPERATOR INFORMATION**

Operator Name: APPROACH OPERATING, LLC
Operator Address: 6500 WEST FREEWAY, STE. 800

Operator P-5 No.: 028625**SECTION II. WELL INFORMATION**

District No.: 7C	County: CROCKETT
Well No.: 834HB	API No.: 105-41996
Total Lease Acres: 14981.5	Drilling Permit No.: 780113
Lease Name: UNIVERSITY 45	Lease No.: 17662
Field Name: HOLT RANCH (CONSOLIDATED)	Field No.: 42341300

Filer is the owner or lessee, or has been authorized by the owner or lessee, of all or an undivided portion of the mineral estate under each tract for which filer is listed as operator below. For all leases operated by other entities, the number of assigned acres shown are reflected on current Commission records or the filer has been authorized by the current operator to change the assigned acreage of that operator as shown below.

SECTION III. LISTING OF ALL WELLS IN THE APPLIED-FOR FIELD ON THE SAME ACREAGE AS THE LEASE, POOLED UNIT, OR UNITIZED TRACT DESIGNATED IN SECTION II ABOVE BY FILER

RRC ID No. or Lease No.	Well No.	H-Horizontal D-Directional V-Vertical	Lease Name	API No.	Acres Assigned	Operator Name and Operator No. (if different from filing operator)
262410	2110	V	UNIVERSITY 45	105-41210	56.275	
17662	2111	V	UNIVERSITY 45	105-41321	56.275	
17662	2901	V	UNIVERSITY 45	105-41015	25.000	
258304	2902	V	UNIVERSITY 45	105-41085	25.000	
17662	2903	V	UNIVERSITY 45	105-41196	25.000	
17662	1101HB	H	UNIVERSITY 45	105-41308	150.000	
17662	1102HB	H	UNIVERSITY 45	105-41597	280.000	
17662	2112X	V	UNIVERSITY 45	105-41377	56.275	
258170	2201X	V	UNIVERSITY 45	105-41042	25.000	
17662	2202HB	H	UNIVERSITY 45	105-41466	230.000	
17662	2208HB	H	UNIVERSITY 45	105-41612	170.000	
17662	2209HB	H	UNIVERSITY 45	105-41611	180.000	
17662	2216HB	H	UNIVERSITY 45	105-41467	200.000	
17662	2217HB	H	UNIVERSITY 45	105-41469	190.000	
17662	2301HB	H	UNIVERSITY 45	105-41325	254.650	
17662	2302HB	H	UNIVERSITY 45	105-41349	254.650	
17662	2303HB	H	UNIVERSITY 45	105-41384	254.650	

Total Well Count >	89	13060.001	< A. Total Assigned Horiz. Acreage	14981.5	< C. Total Assigned Acreage
		0.0	< Total Remaining Horiz. Acreage	0.0	< Total Remaining Acreage
	1921.499	< B. Total Assigned Vert./Dir. Acreage			
	0.0	< Total Remaining Vert./Dir. Acreage			

SECTION IV. REMARKS / PURPOSE OF FILING (see instructions)

ACREAGE LIST

Attach Additional Pages As Needed. ☐ No additional pages ☐ Additional Pages: 6 (No. of additional pages)

CERTIFICATION: I declare under penalties prescribed in Sec. 91.143, Texas Natural Resources Code, that this report was prepared by me or under my supervision or direction, that I am authorized to make this report, and that the information contained in this report is true, correct, and complete to the best of my knowledge.

Carol Adler

cadler@apporachresources.com

Signature

Name and title (type or print)

Email (Include email address only if you affirmatively consent to its public release)

6500 West Freeway, Ste. 800 Fort Worth, Texas 76116

817-989-9000

07/17/2014

Address

City, State, Zip Code

Tel: Area Code Number

Date: mo. day yr.



RAILROAD COMMISSION OF TEXAS

1701 N. Congress
P.O. Box 12967
Austin, Texas 78701-2967

P-16 Data Sheet

Page 1

Rev. ___/2014

Acreage Designation

SECTION I. OPERATOR INFORMATION

Operator Name: APPROACH OPERATING, LLC

Operator P-5 No.: 028625

Operator Address: 6500 WEST FREEWAY, STE. 800

SECTION II. WELL INFORMATION

District No.: 7C

County: CROCKETT

Well No.: 834HB

API No.: 105-41996

Total Lease Acres: 14981.5

Drilling Permit No.: 780113

Lease Name: UNIVERSITY 45

Lease No.: 17662

Field Name: HOLT RANCH (CONSOLIDATED)

Field No.: 42341300

Filer is the owner or lessee, or has been authorized by the owner or lessee, of all or an undivided portion of the mineral estate under each tract for which filer is listed as operator below. For all leases operated by other entities, the number of assigned acres shown are reflected on current Commission records or the filer has been authorized by the current operator to change the assigned acreage of that operator as shown below.

SECTION III. LISTING OF ALL WELLS IN THE APPLIED-FOR FIELD ON THE SAME ACREAGE AS THE LEASE, POOLED UNIT, OR UNITIZED TRACT DESIGNATED IN SECTION II ABOVE BY FILER

RRC ID No. or Lease No.	Well No.	H-Horizontal D-Directional V-Vertical	Lease Name	API No.	Acres Assigned	Operator Name and Operator No. (if different from filing operator)
17662	2304HB	H	UNIVERSITY 45	105-41385	254.650	
17662	2322HB	H	UNIVERSITY 45	105-41824	254.650	
17662	2309HB	H	UNIVERSITY 45	105-41841	254.650	
17662	2315HB	H	UNIVERSITY 45	10/-41842	254.650	
17662	2321HB	H	UNIVERSITY 45	105-41823	254.6500	
17662	2401HB	H	UNIVERSITY 45	105-41306	169.535	
17662	2402HB	H	UNIVERSITY 45	105-41354	339.070	
17662	2403HB	H	UNIVERSITY 45	105-41355	339.070	
17662	701HB	H	UNIVERSITY 45	105-41273	171.900	
17662	703HB	H	UNIVERSITY 45	105-41395	171.900	
17662	706HA	H	UNIVERSITY 45	105-41619	343.800	
17662	708HB	H	UNIVERSITY 45	105-41621	0.000	
17662	710HB	H	UNIVERSITY 45	105-41647	343.800	
17662	712HA	H	UNIVERSITY 45	105-41656	0.000	
17662	803HB	H	UNIVERSITY 45	105-41249	206.280	
17662	804HB	H	UNIVERSITY 45	105-41352	206.280	
17662	805HB	H	UNIVERSITY 45	105-41351	206.280	

Total Well Count >	89	13060.001	< A. Total Assigned Horiz. Acreage	14981.5	< C. Total Assigned Acreage
		0.0	< Total Remaining Horiz. Acreage	0.0	< Total Remaining Acreage
		1921.499	< B. Total Assigned Vert./Dir. Acreage		
		0.0	< Total Remaining Vert./Dir. Acreage		

SECTION IV. REMARKS / PURPOSE OF FILING (see instructions)

ACREAGE LIST

Attach Additional Pages As Needed. ☐ No additional pages ☒ Additional Pages: 5 (No. of additional pages)

CERTIFICATION: I declare under penalties prescribed in Sec. 91.143, Texas Natural Resources Code, that this report was prepared by me or under my supervision or direction, that I am authorized to make this report, and that the information contained in this report is true, correct, and complete to the best of my knowledge.

Carol Adler

cadler@approachresources.com

Signature

Name and title (type or print)

Email (include email address only if you affirmatively consent to its public release)

6500 West Freeway, Ste. 800 Fort Worth, Texas 76116

817-989-9000

07/17/2014

Address

City, State, Zip Code

Tei: Area Code

Number

Date: mo. day yr.

**RAILROAD COMMISSION OF TEXAS**

1701 N. Congress
P.O. Box 12967
Austin, Texas 78701-2967

P-16 Data Sheet**Page 1**

Rev. ___/2014

Acreage Designation**SECTION I. OPERATOR INFORMATION****Operator Name:** APPROACH OPERATING, LLC**Operator P-5 No.:** 028625**Operator Address:** 6500 WEST FREEWAY, STE. 800**SECTION II. WELL INFORMATION****District No.:** 7C**County:** CROCKETT**Well No.:** 834HB**API No.:** 105-41996**Total Lease Acres:** 14981.5**Drilling Permit No.:** 780113**Lease Name:** UNIVERSITY 45**Lease No.:** 17662**Field Name:** HOLT RANCH (CONSOLIDATED)**Field No.:** 42341300

Filer is the owner or lessee, or has been authorized by the owner or lessee, of all or an undivided portion of the mineral estate under each tract for which filer is listed as operator below. For all leases operated by other entities, the number of assigned acres shown are reflected on current Commission records or the filer has been authorized by the current operator to change the assigned acreage of that operator as shown below.

SECTION III. LISTING OF ALL WELLS IN THE APPLIED-FOR FIELD ON THE SAME ACREAGE AS THE LEASE, POOLED UNIT, OR UNITIZED TRACT DESIGNATED IN SECTION II ABOVE BY FILER

RRC ID No. or Lease No.	Well No.	H-Horizontal D-Directional V-Vertical	Lease Name	API No.	Acres Assigned	Operator Name and Operator No. (if different from filing operator)
17662	806HB	H	UNIVERSITY 45	105-41555	206.280	
17662	839HB	H	UNIVERSITY 45	105-41815	206.280	
17662	901H	H	UNIVERSITY 45	105-41283	158.680	
17662	902HB	H	UNIVERSITY 45	105-41293	158.680	
17662	903HB	H	UNIVERSITY 45	105-41444	158.680	
17662	904HB	H	UNIVERSITY 45	105-41443	158.680	
17662	905HA	H	UNIVERSITY 45	105-41556	158.680	
17662	907HB	H	UNIVERSITY 45	105-41810	158.680	
17662	913HB	H	UNIVERSITY 45	105-41807	158.680	
17662	917HB	H	UNIVERSITY 45	105-41809	158.680	
17662	919HB	H	UNIVERSITY 45	105-41787	158.680	
17662	923HB	H	UNIVERSITY 45	105-41799	158.680	
17662	927HB	H	UNIVERSITY 45	105-41775	158.680	
17662	931HB	H	UNIVERSITY 45	105-41755	158.680	
17662	933HC	H	UNIVERSITY 45	105-41756	158.680	
17662	2432HB	H	UNIVERSITY 45	105-41888	169.535	
17662	2444HB	H	UNIVERSITY 45	105-41886	169.535	

Total Well Count >

89

13060.001

< **A. Total Assigned Horiz. Acreage**

14981.5

< **C. Total Assigned Acreage**

0.0

< **Total Remaining Horiz. Acreage**

0.0

< **Total Remaining Acreage**

1921.499

< **B. Total Assigned Vert./Dir. Acreage**

0.0

< **Total Remaining Vert./Dir. Acreage****SECTION IV. REMARKS / PURPOSE OF FILING (see instructions)**

ACREAGE LIST

Attach Additional Pages As Needed.

☐

No additional pages

☒

Additional Pages: 5 (No. of additional pages)

CERTIFICATION: I declare under penalties prescribed in Sec. 91.143, Texas Natural Resources Code, that this report was prepared by me or under my supervision or direction, that I am authorized to make this report, and that the information contained in this report is true, correct, and complete to the best of my knowledge.

Carol Adler

cadler@approachresources.com

Signature

Name and title (type or print)

Email (include email address only if you affirmatively consent to its public release)

6500 West Freeway, Ste. 800 Fort Worth, Texas 76116

817-989-9000

07/17/2014

Address

City,

State,

Zip Code

Tel: Area Code

Number

Date: mo. day yr.



RAILROAD COMMISSION OF TEXAS

1701 N. Congress
P.O. Box 12967
Austin, Texas 78701-2967

P-16 Data Sheet

Page 1

Rev. ___/2014

Acreage Designation

SECTION I. OPERATOR INFORMATION

Operator Name: APPROACH OPERATING, LLC

Operator P-5 No.: 028625

Operator Address: 6500 WEST FREEWAY, STE. 800

SECTION II. WELL INFORMATION

District No.: 7C

County: CROCKETT

Well No.: 834HB

API No.: 105-41996

Total Lease Acres: 14981.5

Drilling Permit No.: 780113

Lease Name: UNIVERSITY 45

Lease No.: 17662

Field Name: HOLT RANCH (CONSOLIDATED)

Field No.: 42341300

Filer is the owner or lessee, or has been authorized by the owner or lessee, of all or an undivided portion of the mineral estate under each tract for which filer is listed as operator below. For all leases operated by other entities, the number of assigned acres shown are reflected on current Commission records or the filer has been authorized by the current operator to change the assigned acreage of that operator as shown below.

SECTION III. LISTING OF ALL WELLS IN THE APPLIED-FOR FIELD ON THE SAME ACREAGE AS THE LEASE, POOLED UNIT, OR UNITIZED TRACT DESIGNATED IN SECTION II ABOVE BY FILER

RRC ID No. or Lease No.	Well No.	H-Horizontal D-Directional V-Vertical	Lease Name	API No.	Acres Assigned	Operator Name and Operator No. (if different from filing operator)
17662	2438HB	H	UNIVERSITY 45	105-41887	339.050	
17662	2340HB	H	UNIVERSITY 45	105-41894	230.000	
17662	2409HB	H	UNIVERSITY 45	105-41901	169.535	
17662	2415HB	H	UNIVERSITY 45	105-41902	280.000	
17662	2421HB	H	UNIVERSITY 45	105-41903	200.000	
17662	705HC	H	UNIVERSITY 45	105-41928	206.280	
17662	709HB	H	UNIVERSITY 45	105-41929	206.280	
17662	713HC	H	UNIVERSITY 45	105-41934	208.280	
17662	715HB	H	UNIVERSITY 45	105-41935	206.280	
17662	2126HB	H	UNIVERSITY 45	105-41984	171.900	
17662	2130HC	H	UNIVERSITY 45	105-41983	171.900	
17662	2120HB	H	UNIVERSITY 45	105-41975	171.900	
17662	2124HC	H	UNIVERSITY 45	105-41982	171.900	
17662	2114HB	H	UNIVERSITY 45	105-41881	171.900	
17662	2118HC	H	UNIVERSITY 45	105-41981	171.900	
17662	840HB	H	UNIVERSITY 45	105-41999	206.280	
17662	838HC	H	UNIVERSITY 45	105-42001	190.000	

Total Well Count >	89	13060.001	< A. Total Assigned Horiz. Acreage	14981.5	< C. Total Assigned Acreage
		0.0	< Total Remaining Horiz. Acreage	0.0	< Total Remaining Acreage
		1921.499	< B. Total Assigned Vert./Dir. Acreage		
		0.0	< Total Remaining Vert./Dir. Acreage		

SECTION IV. REMARKS / PURPOSE OF FILING (see instructions)

ACREAGE LIST

Attach Additional Pages As Needed. ☐ No additional pages ☒ Additional Pages: 5 (No. of additional pages)

CERTIFICATION: I declare under penalties prescribed in Sec. 91.143, Texas Natural Resources Code, that this report was prepared by me or under my supervision or direction, that I am authorized to make this report, and that the information contained in this report is true, correct, and complete to the best of my knowledge.

Carol Adler

cadler@approachresources.com

Signature

Name and title (type or print)

Email (include email address only if you affirmatively consent to its public release)

6500 West Freeway Ste. 800

817-989-9000

07/17/2014

Address

City,

State,

Zip Code

Tel: Area Code

Number

Date: mo. day yr.

RAILROAD COMMISSION OF TEXAS

**1701 N. Congress
P.O. Box 12967
Austin, Texas 78701-2967**

P-16 Data Sheet

Page 1

Rev. /2014

Acreage Designation

SECTION I. OPERATOR INFORMATION

Operator Name: APPROACH OPERATING, LLC	Operator P-5 No.: 028625
Operator Address: 6500 WEST FREEWAY STE. 800 FORT WORTH, TEXAS 76116	

SECTION II. WELL INFORMATION

District No.: 7C	County: CROCKETT
Well No.: 834HB	API No.: 105-41996
Total Lease Acres: 14981.5	Drilling Permit No.: 780113
Lease Name: UNIVERSITY 45	Lease No.: 17662
Field Name: HOLT RANCH (CONSOLIDATED)	Field No.: 42341300

Filer is the owner or lessee, or has been authorized by the owner or lessee, of all or an undivided portion of the mineral estate under each tract for which filer is listed as operator below. For all leases operated by other entities, the number of assigned acres shown are reflected on current Commission records or the filer has been authorized by the current operator to change the assigned acreage of that operator as shown below.

SECTION III. LISTING OF ALL WELLS IN THE APPLIED-FOR FIELD ON THE SAME ACREAGE AS THE LEASE, POOLED UNIT, OR UNITIZED TRACT DESIGNATED IN SECTION II ABOVE BY FILER

[illegible]

Total Well Count >	89	13060.001	< A. Total Assigned Horiz. Acreage	14981.5	< C. Total Assigned Acreage
		0.0	< Total Remaining Horiz. Acreage	0.0	< Total Remaining Acreage
		1921.499	< B. Total Assigned Vert./Dir. Acreage		
		0.0	< Total Remaining Vert./Dir. Acreage		

SECTION IV. REMARKS / PURPOSE OF FILING (see instructions)

ACREAGE LIST

Attach Additional Pages As Needed. ☐ No additional pages ☒ Additional Pages: 5 (No. of additional pages)

CERTIFICATION: I declare under penalties prescribed in Sec. 91.143, Texas Natural Resources Code, that this report was prepared by me or under my supervision or direction, that I am authorized to make this report, and that the information contained in this report is true, correct, and complete to the best of my knowledge.

Carol Adler

cadler@approachresources.com

Signature

Name and title (type or print)

Email (include email address *only* if you affirmatively consent to its public release)

6500 West Freeway Ste. 800 Fort Worth, Texas 76116

817-989-9000

07/17/2014

Address

City,	State,	Zip Code
-------	--------	----------

Tel: Area Code

Number

Date: mo. day yr.

Acreage Designation

Filer is the owner or lessee of all or an undivided portion of the minerals under each tract listed below and has the legal right to drill on each tract traversed by the well that will have perforations or other take points open in the interval of the applied-for field(s). All tracts listed will actually be traversed by the wellbore or the filer has pooling authority or other contractual authority, such as a production sharing agreement, authorizing inclusion of the non-drillsite tract in the acreage assigned to the well.

SECTION V. LISTING OF ALL TRACTS CONTRIBUTING ACREAGE TO AN RRC DESIGNATED DRILLSITE DEVELOPMENTAL UNIT THAT IS NOT A SINGLE LEASE, POOLED UNIT, OR GROUP OF TRACTS UNITIZED BY CONTRACT FOR PURPOSES OF SECONDARY RECOVERY

[illegible]

Filer is the owner or lessee, or has been authorized by the owner or lessee, of all or an undivided portion of the mineral estate under each tract for which filer is listed as operator below. For all leases operated by other entities, the number of assigned acres shown are reflected on current Commission records or the filer has been authorized by the current operator to change the assigned acreage of that operator as shown below.

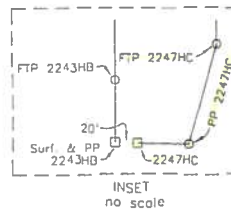
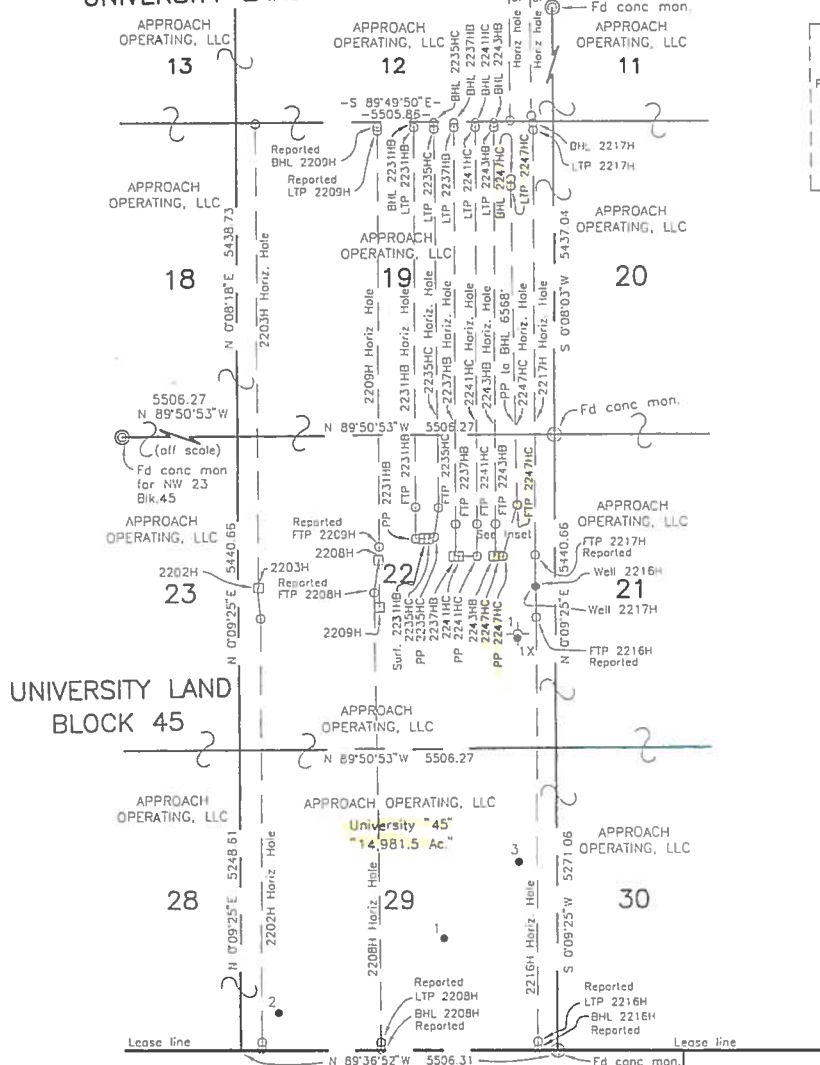
SECTION VI. LISTING OF ALL WELLS IN THE APPLIED FOR FIELD ON THE SAME ACREAGE AS THE LEASE OR POOLED UNIT DESIGNATED FOR THE TRACTS LISTED IN SECTION V BY FILER

[illegible]

SECTION VII. REMARKS

UNIVERSITY LAND BLOCK 45

8-18-2014 Crockett County 906/67 (23)



Perpendicular distances off
2247HC Univ. 45' horizontal hole
FTP 2243HB (proposed) = 269'
2243HB Horiz hole (proposed) = 284'
2217H Horiz hole (reported) = 315'

REPORTED 1st TAKE POINT

MD = 7007'
920 ft. from Pen Pl. 2247HC
9488 ft. FSL & 6058 ft. FEL of lease
1221 ft. FNL and 658 ft. FEL
University Land Survey 22, Block 45
Y = 462,868 ft.
X = 1,718,278 ft.
Latitude = 30.9363° N
Longitude = 101.2319° W.

REPORTED LAST TAKE POINT

MD = 12,545'
122 ft. from BHL 2247HC
15,012 ft. FSL & 6148 ft. FEL of lease
1134 ft. FNL and 747 ft. FEL
University Land Survey 19, Block 45
Y = 468,393 ft.
X = 1,718,202 ft.
Latitude = 30.9514° N
Longitude = 101.2323° W.

REPORTED PENETRATION POINT

MD = 5604'
105 ft. from Surface 2247HC
Y = 461,982 ft.
X = 1,718,028 ft.
Latitude = 30.9338° N
Longitude = 101.2327° W.
2108 ft. FNL and 905 ft. FEL
University Land Survey 22, Block 45
8600 ft. FSL of lease
6306 ft. FEL of lease

REPORTED BOTTOMHOLE LOC.

MD = 12,657'
Y = 468,515 ft.
X = 1,718,207 ft.
Latitude = 30.9518° N
Longitude = 101.2323° W.
1012 ft. FNL and 742 ft. FEL
University Land Survey 19, Block 45
15,134 ft. FSL & 6144 ft. FEL of lease

RUNNELS COUNTY SCHOOL LAND NO. 2

RUNNELS COUNTY SCHOOL LAND NO. 1

LEGEND

- = Surface Location (Surf.)
- PP = Penetration Point
- = Surface well (as drilled)
- FTP = 1st Take Point
- LTP = Last Take Point
- BHL = Bottom Hole Location

Located N 5W 15 miles from Ozona, Texas.

"Ac" = Acreage claimed by operator to be in lease.

0 2000 4000

SCALE: 1" = 2000'

FIELD COUNTY OPERATOR LEASE WELL NO. ELEVATION LOCATION

NOTES

Courses, distances and coordinates shown hereon are of the Texas Coordinate System of 1927 - Central Zone.

The survey construction shown hereon is sufficient for staking this location and no other purpose.

The lease information shown hereon is based on information provided by operator or its representatives and was relied upon by surveyor for the purpose of staking this location. Said surveyor was not requested to verify lease and accepts no responsibility for the accuracy or status of this information.

Position of surveys shown hereon is based on Frank Friends Survey of University Lands Blocks 38 to 57 dated July 24, 1937 on file in the General Land Office.

APPROACH OPERATING, LLC
Baker "B" - lease

SURFACE LOCATION

Y = 461,985 ft.
X = 1,717,923 ft.
Latitude = 30.9338° N
Longitude = 101.2331° W
2105 ft. FNL and 1010 ft. FEL
University Land Survey 22, Block 45
8603 ft. FSL of lease
6411 ft. FEL of lease

Reported positions and take point information as shown is based on a Survey Report provided by operator.

The above sketch represents the location as staked on the ground and is for permit purposes only.

Staked the 22nd day of January, 2014.



Thomas J. Houston
Registered Professional Land Surveyor No. 4261
FRM NUMBER 10045600
OFFICE OF

WILSON LAND SURVEYING, INC.

1514 W. BEAUREGARD AVE
P.O. BOX 3326 PH. 325-653-3916
SAN ANGELO, TEXAS 76902

COPYRIGHTED
2247HR45.DWG