

# RAILROAD COMMISSION OF TEXAS

Tracking No.: 88853

Oil and Gas Division

Status: Submitted

This facsimile W-2 was generated electronically  
from data submitted to the RRC.

API No. 42- 105-41602

7. RRC District No.

7C

## Oil Well Potential Test, Completion or Recompletion Report, and Log

8. RRC Lease No.

17634

1. FIELD NAME (as per RRC Records or Wildcat)  
LIN (WOLFCAMP)

2. LEASE NAME  
UNIVERSITY 52-10

9. Well No.  
7H

3. OPERATOR'S NAME (Exactly as shown on Form P-5, Organization Report)  
DEVON ENERGY PRODUCTION CO, L.P.

RRC Operator No.  
216378

10. County of well site  
CROCKETT

4. ADDRESS

333 W SHERIDAN AVE OKLAHOMA CITY, OK 73102-5015

11. Purpose of filing

Initial Potential ☒

Retest ☐

Reclass ☐

Well record only  
(Explain in remarks) ☐

5. If Operator has changed within last 60 days, name former operator

6a. Location (Section, Block, and Survey)

10, 52, UL

6b. Distance and direction to nearest town in this county.

17.65 MILES SW FROM MERTZON

12. If workover or reclass, give former field (with reservoir) & Gas ID or oil lease no.

FIELD & RESERVOIR

GAS ID or  
OIL LEASE #

Oil-O  
Gas-G

Well #

N/A

13. Type of electric or other log run  
None

14. Completion or recompletion date  
09/27/2013

### SECTION I- POTENTIAL TEST DATA IMPORTANT: Test should be for 24 hours unless otherwise specified infield rules.

15. Date of test  
10/21/2013

16. No. of hours tested  
24

17. Production method (Flowing, Gas Lift, Jetting, Pumping- Size & Type of pump)  
Flowing

18. Choke size  
48

19. Production during  
Test Period

Oil - BBLs  
294.0

Gas - MCF  
507

Water - BBLs  
280

Gas - Oil Ratio  
1724

Flowing Tubing Pressure  
240.0 PSI

20. Calculated 24-  
Hour Rate

Oil - BBLs  
294.0

Gas - MCF  
507

Water - BBLs  
280

Oil Gravity-API-60°  
39.0

Casing Pressure  
1050.0 PSI

21. Was swab used during this test?

Yes ☐

No ☒

22. Oil produced prior to test (New & Reworked wells)  
2876.0

23. Injection Gas-Oil Ratio

REMARKS: N/A

INSTRUCTIONS: File an original and one copy of the completed Form W-2 in the appropriate RRC District Office within 30 days after completing a well and within 10 days after a potential test. If an operator does not properly report the results of a potential test within the 10-day period, the effective date of the allowable assigned to the well will not extend back more than 10 days before the W-2 was received in the District Office. (Statewide Rules 16 and 51) To report a completion or recompletion, fill in both sides of this form. To report a retest, fill in only the front side.

#### WELL TESTERS CERTIFICATION

I declare under penalties prescribed in Sec. 91.143, Texas Natural Resources Code, that I conducted or supervised this test by observation of (a) meter readings or (b) the top and bottom gauges of each tank into which production was run during the test. I further certify that the potential test data shown above is true, correct, and complete, to the best of my knowledge.

Signature: Well Tester

Name of Company

RRC Representative

#### OPERATOR'S CERTIFICATION

I declare under penalties prescribed in Sec. 91.143, Texas Natural Resources Code, that I am authorized to make this report, that this report was prepared by me or under my supervision and direction, and that data and facts stated therein are true, correct and complete, to the best of my knowledge.

DEVON ENERGY PRODUCTION CO, L.P.

Type or printed name of operator's representative

(405) 552-3574

10/28/2013

Telephone: Area Code

Number

Month Day Year

Regulatory Compliance

Title of Person

Trina Cooper

Signature

SECTION III										DATA ON WELL COMPLETION AND LOG (Not Required on Retest)			
24. Type of Completion New Well <input checked="" type="checkbox"/> Deepening <input type="checkbox"/> Plug Back <input type="checkbox"/> Other <input type="checkbox"/>						25. Permit to Drill, Plug Back or Deepen DATE <b>10/30/2012</b> PERMIT NO. <b>750481</b> Rule 37 Exception CASE NO.							
26. Notice of Intention to Drill this well was filed in Name of <b>DEVON ENERGY PRODUCTION CO, L.P.</b>						Water Injection Permit PERMIT NO.							
27. Number of producing wells on this lease in this field (reservoir) including this well <b>12</b>			28. Total number of acres in this lease <b>2012.3</b>			Salt Water Disposal Permit PERMIT NO.							
29. Date Plug Back, Deepening, Workover or Drilling Operations: <b>12/16/2012</b>		Commenced <b>02/02/2013</b>		Completed <b>28.0</b>		30. Distance to nearest well, Same Lease & Reservoir <b>28.0</b>							
31. Location of well, relative to nearest lease boundaries <b>1863.0</b> Feet From <b>West</b> Line and <b>7431.0</b> Feet from <b>North</b> Line of the <b>UNIVERSITY 52-10</b> Lease													
32. Elevation (DF. RKB, RT. GR ETC.) <b>2523</b> <b>GL</b>				33. Was directional survey made other than inclination (Form W-12)? <input checked="" type="checkbox"/> Yes <input type="checkbox"/> No									
34. Top of Pay <b>5618 MD:5632</b>		35. Total Depth <b>6283 MD:14076</b>		36. P. B. Depth <b>6283 MD:13978</b>		37. Surface Casing Determined by Field Rules <input type="checkbox"/> Recommendation of T.D.W.R. <input checked="" type="checkbox"/> Railroad Commission (Special) <input type="checkbox"/>		Dt. of Letter <b>10/19/2012</b>					
38. Is well multiple completion? <input type="checkbox"/> Yes <input checked="" type="checkbox"/> No													
39. If multiple completion, list all reservoir names (completions in this well) and Oil Lease or Gas ID No. <b>FIELD &amp; RESERVOIR</b>						GAS ID or OIL LEASE #		Oil-G Gas-G		Well #			
40. Intervals Drilled by: Rotary Tools <input checked="" type="checkbox"/> Cable Tools <input type="checkbox"/>						41. Name of Drilling Contractor <b>HELMERICH &amp; PAYNE</b>				42. Is Cementing Affidavit Attached? <input checked="" type="checkbox"/> Yes <input type="checkbox"/> No			
43. CASING RECORD (Report All Strings Set in Well)													
CASING SIZE		WT #/FT.		DEPTH SET		MULTISTAGE TOOL DEPTH		TYPE & AMOUNT CEMENT (sacks)		HOLE SIZE			
9 5/8		40.0		790				C 490		12 1/4			
5 1/2		17.0		14076				C 2814		8 3/4			
44. LINER RECORD													
Size		Top		Bottom		Sacks Cement			Screen				
N/A													
45. TUBING RECORD													
Size		Depth Set		Packer Set		From L1 6590			To 13933				
2 7/8		6504				From			To				
						From			To				
						From			To				
46. PRODUCING INTERVAL (this completion) Indicate depth of perforation or open hole													
47. ACID, SHOT, FRACTURE, CEMENT SQUEEZE, ETC.													
Depth Interval				Amount and Kind of Material Used									
6590.0				13933.0				FRAC WITH 152,689 BBLS SLICKWATER + 6,396,626 LBS OF SAND					
48. FORMATION RECORD (LIST DEPTHS OF PRINCIPAL GEOLOGICAL MARKERS AND FORMATION TOPS)													
Formations		Depth		Formations		Depth							
LOWER SPRABERRY		4692.0 MD: 4703.0											
DEAN		5492.0 MD: 5506.0											
WOLFCAMP		5618.0 MD: 5632.0											
REMARKS: KOP IS @ 6266'. CEMENT DID NOT INITIALLY CIRCULATE TO SURFACE. RUN TEMP SURVEY-TOP OF CEMENT @150 FEET AND TOP OUT W/150 SACKS OF CLASS C CEMENT. CEMENT TO SURFACE													

Cementer: Fill in shaded areas.  
Operator: Fill in other items.

RAILROAD COMMISSION OF TEXAS  
Oil and Gas Division

Form W-15  
Cementing Report  
Rev. 4/1/83  
483-045

1. Operator's Name (As shown on Form P-5, Organization Report) <b>Devon Energy Production Co , LP</b>	2. RRC Operator No. <b>216378</b>	3. RRC District No. <b>7C</b>	4. County of Well Site <b>Crockett</b>
5. Field Name (Wildcat or exactly as shown on RRC Records) <b>Lin (WolfCamp)</b>		6. API No. <b>42-105-41602</b>	7. Drilling Permit No. <b>750481</b>
8. Lease Name <b>University 52-10</b>	9. Rule 37 Case No.	10. Oil Lease/Gas ID No. <b>17634</b>	11. Well No. <b>7H</b>

CASING CEMENTING DATA:		SURFACE CASING	INTER-MEDIATE CASING	PRODUCTION CASING		MULTI-STAGE CEMENTING PROCESS	
				Single String	Multiple Parallel Strings	Tool	Shoe
12. Cementing Date		<b>12/18/12</b>					
13. • Drilled Hole Size		<b>12 1/4</b>					
• Est. % wash or hole enlargement							
14. Size of casing (in. O.D.)		<b>9 5/8</b>					
15. Top of liner (ft.)							
16. Setting depth (ft.)		<b>790</b>					
17. Number of centralizers used		<b>8</b>					
18. Hrs. Waiting on cement before drill-out		<b>8+</b>					
1 <sup>st</sup> Slurry	19. API cement used: No. of sacks ▶	<b>340</b>					
	Class ▶	<b>C</b>					
	Additives ▶	<b>#22</b>					
2 <sup>nd</sup> Slurry	No. of sacks ▶						
	Class ▶						
	Additives ▶						
3 <sup>rd</sup> Slurry	No. of sacks ▶						
	Class ▶						
	Additives ▶						
1 <sup>st</sup>	20. Slurry pumped: Volume (cu. ft.) ▶	<b>595</b>					
	Height (ft.) ▶	<b>1899</b>					
2 <sup>nd</sup>	Volume (cu. ft.) ▶						
	Height (ft.) ▶						
3 <sup>rd</sup>	Volume (cu. ft.) ▶						
	Height (ft.) ▶						
Total	Volume (cu. ft.) ▶	<b>595</b>					
	Height (ft.) ▶	<b>1899</b>					
21. Was cement circulated to ground surface (or bottom of cellar) outside casing ?		<b>No Yes</b>					

Remark: **Slurry : 2% Cacl2+.125 pps Celloflake + 4% Gel**  
**Run Temp Survey and Top Out with 150 sacks of Class C Cement**



CEMENTING TO PLUG AND ABANDON	PLUG #1	PLUG #2	PLUG #3	PLUG #4	PLUG #5	PLUG #6	PLUG #7	PLUG #8
23. Cementing date								
24. Size of hole or pipe plugged (in.)								
25. Depth to bottom of tubing or drill pipe (ft.)								
26. Sacks of cement used (each plug)								
27. Slurry volume pumped (cu. ft.)								
28. Calculated top of plug (ft.)								
29. Measured top of plug, if tagged (ft.)								
30. Slurry wt. (lb/gal)								
31. Type cement								

CEMENTER'S CERTIFICATE: I declare under penalties in Sec. 91.143, Texas Natural Resources Code, that I am authorized to make this Certification, that the cementing of casing and/or the placing of cement plugs in this well as shown in the report was performed by me or under my Supervision, and that the cementing data and facts presented on both sides of this form are true, correct, and complete, to the best of my knowledge. This certification covers cementing data only.

**Marshall Brown, Operations Supervisor**

Name and title of cementer's representative

**Baker Hughes**

Cementing Company

Signature

**P.O. Box 1135**

Address

**Eldorado**

City,

**Texas**

State,

**76936**

Zip Code

**(325) 853-2553**

Tel: Area Code

Number

**12/18/12**

Date: mo. day yr.

OPERATOR'S CERTIFICATE: I declare under penalties prescribed in Sec. 91.143, Texas Natural Resources Code, that I am authorized to make this certification, that I have knowledge of the well data and information presented in this report, and that data and facts presented on both sides of this form Are true, correct, and complete, to the best of my knowledge. This certification covers all well data.

**Trina Cooper**

Typed or printed name of operator's representative

**Reg Comp Assoc**

Title

Signature

**333 W. Sheridan Ave**

Address

City,

State,

**OKC OK 73102**

Tel: Area Code

Number

**405 552 3574 10/28/13**

Instructions to Form W-15, Cementing Report

**IMPORTANT: Operators and cementing companies must comply with the requirements of the Commission's Statewide Rules 8 (Water Protection), 13 (Casing, Cementing, Drilling, and Completion), and 14 (Well Plugging). For offshore operations, see the requirements of Rule 13 (c).**

- A. What to file. An operator should file an original and one copy of the completed Form W-15 for each cementing company used on a well. The cementing of different casing strings on a well by one cementing company may be reported on one form. Form W-15 should be filed with the following.
- An initial oil or gas completion report, Form W-2 or G-1, as required by Statewide or special field rates;
  - Form W-4, Application for Multiple Completion, if the well is a multiple parallel casing completion; and
  - Form W-3, Plugging Record, unless the W-3 is signed by the cementing company representative. When reporting dry holes, operators must complete Form W-15, in addition to Form W-3, to show any casing cemented in the hole.
- B. Where to file. The appropriate Commission District Office for the county in which the well is located.
- C. Surface Casing. An operator must set and cement sufficient surface casing to protect all usable-quality water strata, as defined by the Texas Department of Water Resources, Austin. Before drilling a well in any field or area in which no field rules are in effect or in which surface casing requirements are not specified in the applicable rules, an operator must obtain a letter from the Department of Water Resources stating the protection depth. Surface casing should not be set deeper than 200 feet below the specified depth without prior approval from the Committee.
- D. Centralizers. Surface Casing must be centralized at the shoe, above and below a stage collar or diverting tool, if run, and through usable-quality water zones. In Non-deviated holes, a centralizer must be placed every fourth joint from the cement shoe to the ground surface or to the bottom of the cellar. All centralizers must meet API specifications.
- E. Exceptions and alternative casing programs. The District Director may grant an exception to the requirements of Statewide Rule 13. In a written application, an operator must state the reason for the requested exception and outline an alternate program for casing and cementing through the protection depth for strata containing usable-quality water. The District Director may approve, modify, or reject a proposed program. An operator must obtain approval of any exception before beginning casing and cementing operations.
- F. Intermediate and production casing. For specific technical requirements, operators should consult Statewide Rule 13 (3) and (4).
- G. Plugging and abandoning. Cement plugs must be placed in the wellbore as required by Statewide Rule 14. The District Director may require additional cement plugs. For onshore or inland wells, a 10-foot cement plug must be placed in the top of the well, and the casing must be cut off three foot below the ground surface. All cement plugs, except the top plug, must have sufficient slurry volume to fill 100 feet of hole, plus ten percent for each 1,000 feet of depth from the ground surface to the bottom of the plug
- To plug and abandon a well, operators must use only cements approved by the Director of Field Operations, Cementing companies, service companies or operators can qualify as approved cements by demonstrating that they are able to mix and pump cement in compliance with Commission rules and regulations.

Cementor: Fill in shaded areas.  
Operator: Fill in other items.

**RAILROAD COMMISSION OF TEXAS**  
**Oil and Gas Division**

Form W-15  
Cementing Report  
Rev. 4/1/83  
483-045

1. Operator's Name (As shown on Form P-5, Organization Report) <b>DEVON ENERGY Prod. Co., L.P.</b>	2. RRC Operator No. <b>216378</b>	3. RRC District No. <b>7C</b>	4. County of Well Site <b>CROCKETT</b>
5. Field Name (Wildcat or exactly as shown on RRC Records) <b>LIN (Wolfcamp)</b>	6. API No. <b>42-105-41602</b>		7. Drilling Permit No. <b>750481</b>
8. Lease Name <b>UNIVERSITY 52-10</b>	9. Rule 37 Case No.	10. Oil Lease/Gas ID No. <b>17634</b>	11. Well No. <b>7H</b>

CASING CEMENTING DATA:		SURFACE CASING	INTER- MEDIATE CASING	PRODUCTION CASING		MULTI-STAGE CEMENTING PROCESS	
				Single String	Multiple Parallel Strings	Tool	Shoe
12. Cementing Date				2/1/13			
13. • Drilled Hole Size				8 3/4			
• Est. % wash or hole enlargement							
14. Size of casing (in. O.D.)				5 1/2"			
15. Top of liner (ft.)							
16. Setting depth (ft.)				14,076'			
17. Number of centralizers used				0			
18. Hrs. Waiting on cement before drill-out				8+			
1 <sup>st</sup> Slurry	19. API cement used: No. of sacks ▶			916			
	Class ▶			"H"			
	Additives ▶			#22			
2 <sup>nd</sup> Slurry	No. of sacks ▶			1898			
	Class ▶			"H"			
	Additives ▶			#22			
3 <sup>rd</sup> Slurry	No. of sacks ▶						
	Class ▶						
	Additives ▶						
1 <sup>st</sup>	20. Slurry pumped: Volume (cu. ft.) ▶			1850			
	Height (ft.) ▶			7323			
2 <sup>nd</sup>	Volume (cu. ft.) ▶			2429			
	Height (ft.) ▶			9616			
3 <sup>rd</sup>	Volume (cu. ft.) ▶						
	Height (ft.) ▶						
Total	Volume (cu. ft.) ▶			4279			
	Height (ft.) ▶			16939			
21. Was cement circulated to ground surface (or bottom of cellar) outside casing ?				YES			
22. Remarks: 1 <sup>st</sup> SLURRY-H 65/35 POZ+6%GEL+3%SALT(BWOW)+0.125ppsCELLOFLAKE+3ppsKOLSEAL+0.4%FL-52+.25%R3+.01% STATIC FREE 2 <sup>nd</sup> SLURRY-H50/50POZ+5%SALT(BWOW)+0.3%CD-32+0.5%FL-25+0.5%FL-52+0.6%SMS+0.3%R-3+.01%STATIC FREE CIRCULATED 180 SACKS (65 BBLs) AT 12.5 PPG							



CEMENTING TO PLUG AND ABANDON	PLUG #1	PLUG #2	PLUG #3	PLUG #4	PLUG #5	PLUG #6	PLUG #7	PLUG #8
23. Cementing date								
24. Size of hole or pipe plugged (in.)								
25. Depth to bottom of tubing or drill pipe (ft.)								
26. Sacks of cement used (each plug)								
27. Slurry volume pumped (cu. ft.)								
28. Calculated top of plug (ft.)								
29. Measured top of plug, if tagged (ft.)								
30. Slurry wt. (lb/gal)								
31. Type cement								

CEMENTER'S CERTIFICATE: I declare under penalties in Sec. 91.143, Texas Natural Resources Code, that I am authorized to make this Certification, that the cementing of casing and/or the placing of cement plugs in this well as shown in the report was performed by me or under my Supervision, and that the cementing data and facts presented on both sides of this form are true, correct, and complete, to the best of my knowledge. This certification covers cementing data only.

**Robert J Carles, Service Supervisor**

Name and title of cementer's representative

**Baker Hughes**

Cementing Company

Signature

**P.O. Box 1135**

**Eldorado**

**Texas**

**76936**

**(325) 853-2553**

**2/1/2013**

Address

City,

State,

Zip Code

Tel: Area Code

Number

Date: mo. day yr.

OPERATOR'S CERTIFICATE: I declare under penalties prescribed in Sec. 91.143, Texas Natural Resources Code, that I am authorized to make this certification, that I have knowledge of the well data and information presented in this report, and that data and facts presented on both sides of this form are true, correct, and complete, to the best of my knowledge. This certification covers all well data.

**Annette Raines**

Typed or printed name of operator's representative

**Sr. Reg. Specialist**

Title

**Annette Raines**

Signature

**333 W. Sheridan Ave.**

Address

**OKC**

**OK**

**73102**

City,

State,

Zip Code

**405-228-8217**

Tel.: Area Code

Number

**10/28/13**

Date: mo. day yr.

Instructions to Form W-15, Cementing Report

**IMPORTANT: Operators and cementing companies must comply with the requirements of the Commission's Statewide Rules 8 (Water Protection), 13 (Casing, Cementing, Drilling, and Completion), and 14 (Well Plugging). For offshore operations, see the requirements of Rule 13 (c).**

A. What to file. An operator should file an original and one copy of the completed Form W-15 for each cementing company used on a well. The cementing of different casing strings on a well by one cementing company may be reported on one form. Form W-15 should be filed with the following.

- An initial oil or gas completion report, Form W-2 or G-1, as required by Statewide or special field rates;
- Form W-4, Application for Multiple Completion, if the well is a multiple parallel casing completion; and
- Form W-3, Plugging Record, unless the W-3 is signed by the cementing company representative. When reporting dry holes, operators must complete Form W-15, in addition to Form W-3, to show any casing cemented in the hole.

B. Where to file. The appropriate Commission District Office for the county in which the well is located.

C. Surface Casing. An operator must set and cement sufficient surface casing to protect all usable-quality water strata, as defined by the Texas Department of Water Resources, Austin. Before drilling a well in any field or area in which no field rules are in effect or in which surface casing requirements are not specified in the applicable rules, an operator must obtain a letter from the Department of Water Resources stating the protection depth. Surface casing should not be set deeper than 200 feet below the specified depth without prior approval from the Committee.

D. Centralizers. Surface Casing must be centralized at the shoe, above and below a stage collar or diverting tool, if run, and through usable-quality water zones. In Non-deviated holes, a centralizer must be placed every fourth joint from the cement shoe to the ground surface or to the bottom of the cellar. All centralizers must meet API specifications.

E. Exceptions and alternative casing programs. The District Director may grant an exception to the requirements of Statewide Rule 13. In a written application, an operator must state the reason for the requested exception and outline an alternate program for casing and cementing through the protection depth for strata containing usable-quality water. The District Director may approve, modify, or reject a proposed program. An operator must obtain approval of any exception before beginning casing and cementing operations.

F. Intermediate and production casing. For specific technical requirements, operators should consult Statewide Rule 13 (3) and (4).

G. Plugging and abandoning. Cement plugs must be placed in the wellbore as required by Statewide Rule 14. The District Director may require additional cement plugs. For onshore or inland wells, a 10-foot cement plug must be placed in the top of the well, and the casing must be cut off three feet below the ground surface. All cement plugs, except the top plug, must have sufficient slurry volume to fill 100 feet of hole, plus ten percent for each 1,000 feet of depth from the ground surface to the bottom of the plug.

To plug and abandon a well, operators must use only cementers approved by the Director of Field Operations, Cementing companies, service companies or operators can qualify as approved cementers by demonstrating that they are able to mix and pump cement in compliance with Commission rules and regulations.

## RAILROAD COMMISSION OF TEXAS

Oil and Gas Division

ELECTRIC LOG  
STATUS REPORT

FORM L-1

Tracking No.: 88853

This facsimile L-1 was generated electronically from data submitted to the RRC.

## Instructions

**When to File Form L-1:**

- with Forms G-1, W-2, and GT-1 for new and deepened gas, oil, and geothermal wells
- with Form W-3 for plugged dry holes
- when sending in a log which was held under a request for confidentiality and the period for confidentiality has not yet expired.

**When is Form L-1 NOT required:**

- with Forms W-2, G-1, and GT-1 filed for injection wells, disposal wells, water supply wells, service wells, re-test wells, re-classifications, and plugbacks of oil, gas or geothermal wells
- with Form W-3 for plugging of other than a dry hole

**Where to File Form L-1:**

- with the appropriate Commission district office

**Filling out Form L-1:**

- Section I and the signature section must be filled out for all wells
- complete only the appropriate part of Section II

**Type of log required:**

- any wireline survey run for the purpose of obtaining lithology, porosity, or resistivity information
- no more than one such log is required but it must be of the subject well
- if such log is NOT run on the subject well, do NOT substitute any other type of log; just select Section II, Part A below

## SECTION I. IDENTIFICATION

Operator Name: DEVON ENERGY PRODUCTION CO, L.P.	District No. 7C	Completion Date: 09/27/2013
Field Name LIN (WOLFCAMP)	Drilling Permit No. 750481	
Lease Name UNIVERSITY 52-10	Lease/ID No. 17634	Well No. 7H
County CROCKETT	API No. 42- 105-41602	

## SECTION II. LOG STATUS (Complete either A or B)

☒ A. BASIC ELECTRIC LOG NOT RUN

☐ B. BASIC ELECTRIC LOG RUN. (Select one)

- ☐ 1. Confidentiality is requested and a copy of the header for each log that has been run on the well is attached.
- ☐ 2. Confidentiality already granted on basic electric log covering this interval (applicable to deepened wells only).
- ☐ 3. Basic electric log covering this interval already on file with Commission (applicable to deepened wells only).
- ☐ 4. Log attached to (select one):

☐ (a) Form L-1 (this form). If the company/lease name on log is different from that shown in Section I, please enter name on log here: \_\_\_\_\_

Check here if attached log is being submitted after being held confidential. ☐

☐ (b) Form P-7, Application for Discovery Allowable and New Field Designation.

☐ (c) Form W-4, Application for Multiple Completion:

Lease or ID No(s). \_\_\_\_\_

Well No(s). \_\_\_\_\_

Trina Cooper

Signature

DEVON ENERGY PRODUCTION CO, L.P.

Name (print)

Regulatory Compliance

Title

(405) 552-3574

Phone

10/28/2013

Date

-FOR RAILROAD COMMISSION USE ONLY-

STATEMENT OF PRODUCTIVITY OF ACREAGE  
ASSIGNED TO PRORATION UNITS

Form P-15

Tracking No.: 88853

This facsimile P-15 was generated electronically  
from data submitted to the RRC.

The undersigned states that he is authorized to make this statement; that he has knowledge of the facts concerning the DEVON ENERGY PRODUCTION CO, L.P. ,

UNIVERSITY 52-10 , No. 7H ; that such well is  
LEASE OPERATOR WELL

completed in the LIN (WOLFCAMP) Field, CROCKETT County,

Texas and that the acreage claimed, and assigned to such well for proration purposes as authorized by special rule and as shown on the attached certified plat embraces \_\_\_\_\_

100.0 acres which can reasonably be considered to be productive of hydrocarbons.

- CERTIFICATE -

*I declare under penalties prescribed in Sec. 91.143, Texas Natural Resources Code, that I am authorized to make this report, that this report was prepared by me or under my supervision and direction, and that data and facts stated therein are true, correct, and complete, to the best of my knowledge,*

Date 10/28/2013 Signature Trina Cooper

Telephone (405) 552-3574 Title Regulatory Compliance  
AREA CODE



Devon Energy Production Co., L.P.  
333 W. Sheridan Ave.  
Oklahoma City, OK 73102-8260

**P-15 Attachment**  
*to the*  
**University 52-10**  
**Lin (Wolfcamp) Field**  
**A 2012.30 Acre Lease in Crockett Co.**

<u>Well Number</u>	<u>RRC ID #</u>	<u>Number of Assigned Acres</u>
1H	17634	160.00
2H	17634	100.00
3H	17634	200.00 Revised
4H	17634	300.00
9H	17634	320.00
6H	17634	320.00
5H	17634	100.00
11H	17634	100.00
12H	17634	100.00
10H	17634	100.00
8H	17634	100.00
7H	17634	100.00 New
Total Acreage Allocated		2,000.00

Groundwater  
Advisory Unit

GROUNDWATER PROTECTION DETERMINATION

Date **October 19, 2012**

GAU File No.: SC- **14984**

\*\*\*\*\* EXPEDITED APPLICATION \*\*\*\*\*

API Number **10500000**

Attention: **ANNETTE RAINES**

RRC Lease No. **000000**

**SC\_216378\_10500000\_000000\_14984.pdf**

**DEVON ENERGY PRODUCTION CO LP  
333 W SHERIDAN AVE  
OKLAHOMA CITY OK 73102**

--Measured--

**1863 ft FWL**

**2755 ft FSL**

**MRL:SECTION**

Digital Map Location:

X-coord/Long **101.01877**

Y-coord/Lat **31.06783**

Datum **83** Zone

**P-5# 216378**

County **CROCKETT**

Lease & Well No. **UNIVERSITY 52-10 #7H&PAD**

Purpose **ND**

Location **SUR-UL,BLK-52,SEC-10,--[TD=6050],[RRC 7C],**

To protect usable-quality groundwater at this location, the Groundwater Advisory Unit of the Texas Railroad Commission recommends:

**The interval from the land surface to 20 feet below the base of Cretaceous-age beds must be protected. The base of the Cretaceous is estimated to occur at a depth of 725 feet.**

**This recommendation is applicable to all wells drilled on this PAD.**

Note: Unless stated otherwise, this recommendation is intended to apply only to the subject well and not for area-wide use. **This recommendation is intended for normal drilling, production, and plugging operations only. It does not apply to saltwater disposal operation into a nonproductive zone (RRC Form W-14).**

If you have any questions, please contact us at 512-463-2741, [gau@rrc.state.tx.us](mailto:gau@rrc.state.tx.us), or by mail.

Sincerely,



Digitally signed by Jack Oswalt  
DN: c=US, st=TEXAS, l=Austin, o=Railroad  
Commission of Texas, cn=Jack Oswalt,  
email=jack.oswalt@rrc.state.tx.us  
Date: 2012.10.19 13:22:08 -05'00'

**Jack M. Oswalt, P.G.**

GEOLOGIST SEAL



Geologist, Groundwater Advisory Unit  
Oil & Gas Division

The seal appearing on this document was authorized by *Jack M. Oswalt* on **10/19/2012**  
Note: Alteration of this electronic document will invalidate the digital signature.

0061R Transition Form  
Rev. 9/1/2011

P.O. Box 12967

Austin, Texas 78711-2967

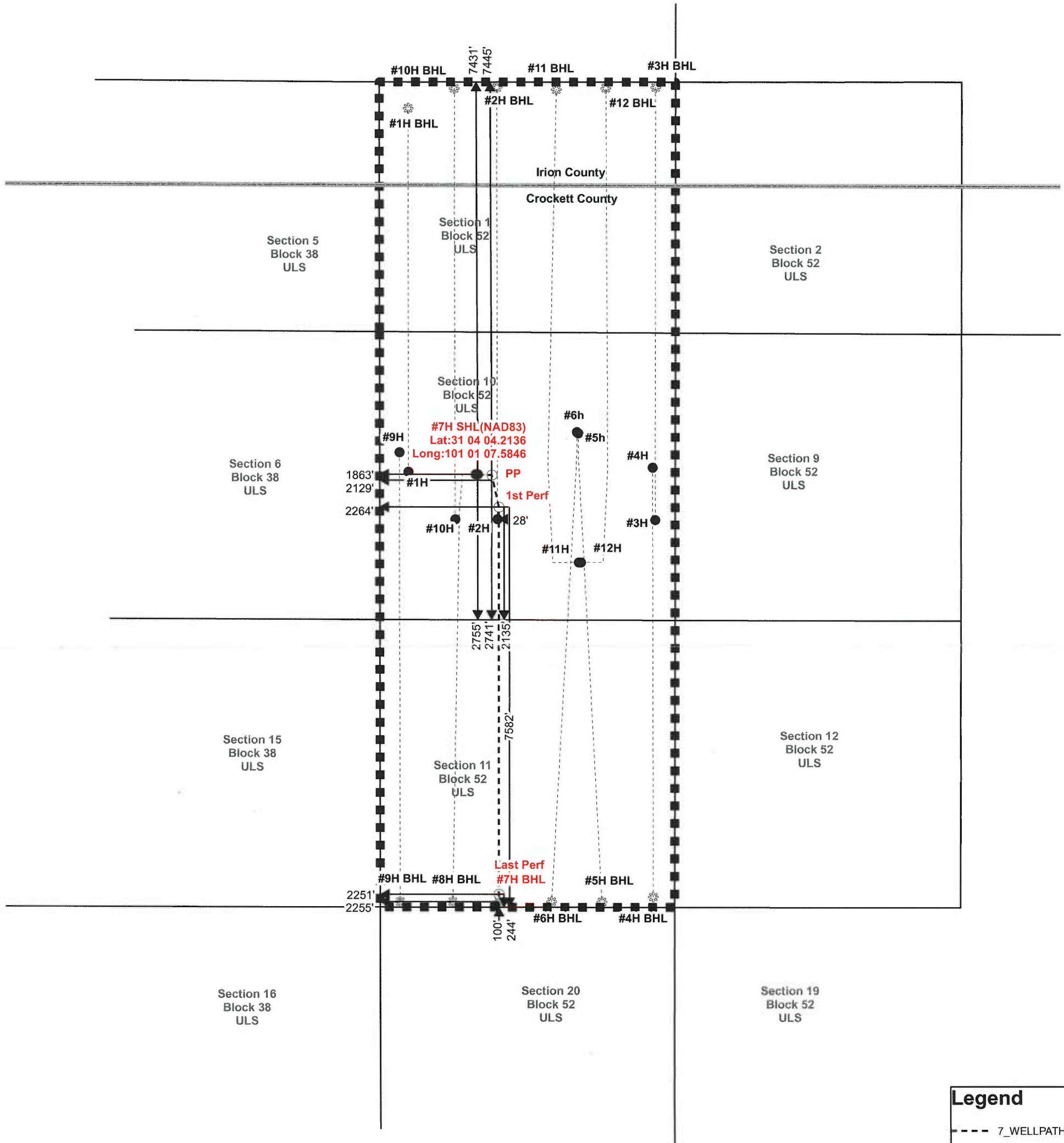
512-463-2741

Internet address: [www.rrc.state.tx.us](http://www.rrc.state.tx.us)

I hereby certify that this plat  
is true and correct to the best  
of my belief and knowledge

Annette Raines  
Annette Raines

Section 10,Block 52 , University Lands Survey  
Crockett County, Texas



Legend

- 7\_WELLPATH
- CountyBdry
- Lease
- Sectionlines

SHL is Approximately 26.71 Miles NE of of Mertzon,TX.

Total Depth: 6293 (Elev.: 2523')

Surface Hole Location:

2755' FSL & 1863' FWL of the University Lands Survey.  
7431' FNL & 1863' FWL of the lease.

Penetration Point:

2741' FSL & 2129' FWL of the University Lands Survey.  
7445' FNL & 2129' FWL of the lease.

First Perforation:

2135' FSL & 2264' FWL of the University Lands Survey.  
7582' FSL & 2264' FWL of the lease.

Last Perforation:

244' FSL & 2251' FWL of the University Lands Survey.  
244' FSL & 2251' FWL of the lease.

Bottom Hole Location:

100' FSL & 2255' FWL of the University Lands Survey.  
100' FSL & 2255' FWL of the lease.

SCALE 1"=2000'

0 1,000 2,000 4,000 Feet



Devon Energy Production Company L.P.  
333 W Sheridan - Oklahoma City 73102

University 52-10 #7H  
2012.302 Acres in Lease  
Section 10, Block 52  
University Lands Survey  
Crockett County, Texas  
Field:Lin (wolfcamp)

DATE: 10-24-2013  
by SS