

RAILROAD COMMISSION OF TEXAS

Tracking No.: 83392
Status: Submitted

Oil and Gas Division
This facsimile W-2 was generated electronically
from data submitted to the RRC.

API No. 42- 105-41480

7. RRC District No.

7C

8. RRC Lease No.

17949

Oil Well Potential Test, Completion or Recompletion Report, and Log

1. FIELD NAME (as per RRC Records or Wildcat)
LIN (WOLFCAMP)

2. LEASE NAME
UNIVERSITY 46

9. Well No.
1304H

3. OPERATOR'S NAME (Exactly as shown on Form P-5, Organization Report)
BHP BILLITON PET(TXLA OP) CO

RRC Operator No.
068596

10. County of well site
CROCKETT

4. ADDRESS
1360 POST OAK BLVD STE 150 HOUSTON, TX 77056-0000

5. If Operator has changed within last 60 days, name former operator

11. Purpose of filing

Initial Potential ☒

Retest ☐

Reclass ☐

Well record only
(Explain in remarks) ☐

6a. Location (Section, Block, and Survey)
13 , 46 , UL

6b. Distance and direction to nearest town in this county.
18 MILES NW OF OZONA

12. If workover or reclass, give former field (with reservoir) & Gas ID or oil lease no.
FIELD & RESERVOIR

GAS ID or
OIL LEASE #

Oil-O
Gas-G

Well #

N/A

13. Type of electric or other log run
Gamma Ray (MWD)

14. Completion or recompletion date
07/25/2013

SECTION I- POTENTIAL TEST DATA IMPORTANT: Test should be for 24 hours unless otherwise specified infield rules.

15. Date of test 08/16/2013	16. No. of hours tested 24	17. Production method (Flowing, Gas Lift, Jetting, Pumping- Size & Type of pump) Gas Lift			18. Choke size 30/64
19. Production during Test Period	Oil - BBLS 100.0	Gas - MCF 336	Water - BBLS 1149	Gas - Oil Ratio 3360	Flowing Tubing Pressure 340.0 PSI
20. Calculated 24-Hour Rate	Oil - BBLS 100.0	Gas - MCF 336	Water - BBLS 1149	Oil Gravity-API-60 ° 46.0	Casing Pressure 1224.0 PSI
21. Was swab used during this test? Yes <input type="checkbox"/> No <input checked="" type="checkbox"/>		22. Oil produced prior to test (New & Reworked wells)			23. Injection Gas-Oil Ratio
REMARKS: N/A					

INSTRUCTIONS: File an original and one copy of the completed Form W-2 in the appropriate RRC District Office within 30 days after completing a well and within 10 days after a potential test. If an operator does not properly report the results of a potential test within the 10-day period, the effective date of the allowable assigned to the well will not extend back more than 10 days before the W-2 was received in the District Office. (Statewide Rules 16 and 51) To report a completion or recompletion, fill in both sides of this form. To report a retest, fill in only the front side.

WELL TESTERS CERTIFICATION

I declare under penalties prescribed in Sec. 91.143, Texas Natural Resources Code, that I conducted or supervised this test by observation of (a) meter readings or (b) the top and bottom gauges of each tank into which production was run during the test. I further certify that the potential test data shown above is true, correct, and complete, to the best of my knowledge.

Signature: Well Tester

Name of Company

RRC Representative

OPERATOR'S CERTIFICATION

I declare under penalties prescribed in Sec. 91.143, Texas Natural Resources Code, that I am authorized to make this report, that this report was prepared by me or under my supervision and direction, and that data and facts stated therein are true, correct and complete, to the best of my knowledge.

Type or printed name of operator's representative

(512) 476-1245

09/07/2013

Telephone: Area Code Number Month Day Year

DRGA

Title of Person

Greg Bilbro

Signature

SECTION III		DATA ON WELL COMPLETION AND LOG (Not Required on Retest)					
24. Type of Completion New Well <input checked="" type="checkbox"/> Deepening <input type="checkbox"/> Plug Back <input type="checkbox"/> Other <input type="checkbox"/>			25. Permit to Drill, Plug Back or Deepen DATE 05/15/2012 PERMIT NO. 739788 Rule 37 Exception CASE NO. _____ Water Injection Permit PERMIT NO. _____ Salt Water Disposal Permit PERMIT NO. _____ Other PERMIT NO. _____				
26. Notice of Intention to Drill this well was filed in Name of PETROHAWK OPERATING COMPANY							
27. Number of producing wells on this lease in this field (reservoir) including this well 7		28. Total number of acres in this lease 14655.3					
29. Date Plug Back, Deepening, Workover or Drilling Operations: Commenced 06/19/2013 Completed 07/02/2013		30. Distance to nearest well, Same Lease & Reservoir 660.0					
31. Location of well, relative to nearest lease boundaries 11831.0 Feet From West Line and 18362.0 Feet from South Line of the UNIVERSITY 46 Lease							
32. Elevation (DF, RKB, RT, GR ETC.) 2565 GL		33. Was directional survey made other than inclination (Form W-12)? <input checked="" type="checkbox"/> Yes <input type="checkbox"/> No					
34. Top of Pay 6043 MD:6115	35. Total Depth 6391 MD:14025	36. P. B. Depth 6390 MD:13939	37. Surface Casing Determined by Field Rules <input type="checkbox"/> Recommendation of T.D.W.R. <input checked="" type="checkbox"/> Railroad Commission (Special) <input type="checkbox"/>	Dt. of Letter 05/18/2012 Dt. of Letter _____			
38. Is well multiple completion? <input type="checkbox"/> Yes <input checked="" type="checkbox"/> No							
39. If multiple completion, list all reservoir names (completions in this well) and Oil Lease or Gas ID No. FIELD & RESERVOIR N/A			GAS ID or OIL LEASE #	Oil-G Gas-G	Well #		
40. Intervals Drilled by: Rotary Tools <input checked="" type="checkbox"/> Cable Tools _____			41. Name of Drilling Contractor H&P 328		42. Is Cementing Affidavit Attached? <input checked="" type="checkbox"/> Yes <input type="checkbox"/> No		
43. CASING RECORD (Report All Strings Set in Well)							
CASING SIZE	WT #/FT.	DEPTH SET	MULTISTAGE TOOL DEPTH	TYPE & AMOUNT CEMENT (sacks)	HOLE SIZE	TOP OF CEMENT	SLURRY VOL. cu. ft.
9 5/8	40.0	987		C 710	12 1/4	SURF	1121.7
5 1/2	20.0	14012		H 2850	8 3/4	SURF	4540.0
44. LINER RECORD							
Size	Top		Bottom		Sacks Cement		Screen
N/A							
45. TUBING RECORD							
Size	Depth Set	Packer Set	46. Producing Interval (this completion) Indicate depth of perforation or open hole				
2 7/8	5457	5457	From L1 6276		To 13855		
			From		To		
			From		To		
			From		To		
47. ACID, SHOT, FRACTURE, CEMENT SQUEEZE, ETC.							
Depth Interval			Amount and Kind of Material Used				
6276.0		13855.0	22-STAGE FRAC: 1066 BBLS 15% HCL; 45682 BBLS SLICKWATER; 27088 BBLS WF120; 42532 BBLS YF120FLEXD; 340999# 100 MESH; 3529430# 40/70 MESH; 5254537# 20/40 MESH				
48. FORMATION RECORD (LIST DEPTHS OF PRINCIPAL GEOLOGICAL MARKERS AND FORMATION TOPS)							
Formations	Depth		Formations	Depth			
SPRABERRY	4755.0 MD: 4757.0						
DEAN	5930.0 MD: 5968.0						
WOLFCAMP	6043.0 MD: 6115.0						
REMARKS: N/A							

RAILROAD COMMISSION OF TEXAS
Oil and Gas Division

1. Operator's Name (As Shown on Form P-5, Organization Report) Petrohawk Operating Company	2. RRC Operator No. 660146	3. RRC District No. 7C	4. County of Well Site CROCKETT
5. Field Name (Wildcat or Exactly as Shown on RRC Records) LIN (WOLFCAMP)		6. API No. 42-105-41480	7. Drilling Permit No. 739788
8. Lease Name UNIVERSITY 46	9. Rule 37 Case No.	10. Oil Lease/Gas ID No.	11. Well No. 1304H

CASING CEMENTING DATA:		SURFACE CASING	INTER-MEDIATE CASING	PRODUCTION CASING		MULTI-STAGE CEMENTING PROCESS	
				Single String	Multiple Parallel Strings	Tool	Shoe
12. Cementing Date		8/4/2012					
13. *Drilled hole size		12 1/4					
*Est. % wash or hole enlargement							
14. Size of casing (In. O.D.)		9 5/8					
15. Top of liner (ft)							
16. Setting depth (ft)		987					
17. Number of centralizers used		6					
18. Hrs. waiting on cement before drill-out		24+					
1st Slurry	19. API cement used: No. of sacks ▶	340					
	Class ▶	c					
	Additives ▶						
2nd Slurry	No. of sacks ▶	370					
	Class ▶	c					
	Additives ▶						
3rd Slurry	No. of sacks ▶						
	Class ▶						
	Additives ▶						
1st	20. Slurry pumped: Volume (cu.ft.) ▶	622.2					
	Height (ft.) ▶	500					
2nd	Volume (cu.ft.) ▶	499.5					
	Height (ft.) ▶	496					
3rd	Volume (cu.ft.) ▶						
	Height (ft.) ▶						
Total	Volume (cu.ft.) ▶	1121.7					
	Height (ft.) ▶	996					
21. Was cement circulated to ground surface (or bottom of cellar) outside casing?		yes					
22. Remarks						Sales Order 9715859 Customer Name PETROHAWK ENERGY CORPORATION Lease University 46 Well Number 1304H Crockett County	

CEMENTING TO PLUG AND ABANDON	PLUG #1	PLUG #2	PLUG #3	PLUG #4	PLUG #5	PLUG #6	PLUG #7	PLUG #8
23. Cementing date								
24. Size of hole or pipe plugged (in.)								
25. Depth to bottom of tubing or drill pipe (ft.)								
26. Sacks of cement used (each plug)								
27. Slurry volume pumped (cu.ft.)								
28. Calculated top of plug (ft.)								
29. Measured top of plug, if tagged (ft.)								
30. Slurry wt. (lbs/gal)								
31. Type cement								

CEMENTER'S CERTIFICATE: I declare under penalties prescribed in Sec. 91.143, Texas Natural Resources Code, that I am authorized to make this certification, that the cementing of casing and/or the placing of cement plugs in this well as shown in the report was performed by me or under my supervision, and that the cementing data and facts presented on both sides of this form are true, correct, and complete, to the best of my knowledge. This certification covers cementing data only.

JOHN C. SULLIVAN Halliburton Energy Services
Name and Title of Cementer's Representative Cementing Company Signature

2908 FM 349 KILGORE TX 75662 1800-854-8926 8/4/2012
Address City State Zip Code Tel: Area Code Number Date: Mo. Day Yr.

OPERATOR'S CERTIFICATE: I declare under penalties prescribed in Sec. 91.143, Texas Natural Resources Code, that I am authorized to make this certification, that I have knowledge of the well data and information presented in this report, and that data and facts presented on both sides of this form are true, correct, and complete, to the best of my knowledge. This certification covers all well data.

Judith Fabela Sr. Regulatory Specialist
Typed or Printed Name of Operator's Representative Title Signature

1000 Louisiana, STE 5600, Houston, Tx 77002 713-821-5078 1/28/2013
Address City, State, Zip Code Tel: Area Code Number Date: Mo. Day Yr.

Instruction to Form W-15, Cementing Report

IMPORTANT: Operators and cementing companies must comply with the requirements of the Commission's Statewide rules 8 (Water Protection), 13 (Casing, Cementing, Drilling, and Completion, and 14 (Well Plugging). For offshore operations, see the requirements of Rule 13 (c).

A. What to file. An operator should file an original and one copy of the completed Form W-15 for each cementing company used on a well. The cementing of different casing strings on a well by one cementing company may be reported on one form. Form W-15 should be filed with the following:

- * An Initial oil or gas completion report, Form W-2 or G-1, as required by Statewide or special field rules;
- * Form W-4, Application for Multiple Completion, if the well is a multiple parallel casing completion; and
- * Form W-3, Plugging Record, unless the W-3 is signed by the cementing company representative. When reporting dry holes, operators must complete Form W-15, in addition to Form W-3, to show any casing cemented in the hole.

B. Where to file. The appropriate Commission District Office for the county in which the well is located.

C. Surface casing. An operator must set and cement sufficient surface casing to protect all usable-quality water strata, as defined by the Texas Department of Water Resources, Austin. Before drilling a well in any field or area in which no field rules are in effect or in which surface casing requirements are not specified in the applicable rules, an operator must obtain a letter from the Department of Water Resources stating the protection depth. Surface casing should not be set deeper than 200 feet below the specified depth without prior approval from the Commission.

D. Centralizers. Surface casing must be centralized at the shoe, above and below a stage collar or diverting tool, if run, and through usable-quality water zones. In nondeviated holes, a centralizer must be placed every fourth joint from the cement shoe to the ground surface or to the bottom of the cellar. All centralizers must meet API specifications.

E. Exceptions and alternative casing programs. The District Director may grant an exception to the requirements of Statewide Rule 13. In a written application, an operator must state the reason for the requested exception and outline an alternate program for casing and cementing through the protection depth for strata containing usable-quality water. The District Director may approve, modify, or reject a proposed program. An operator must obtain approval of any exception before beginning casing and cementing operations.

F. Intermediate and production casing. For specific technical requirements, operators should consult Statewide Rule 13 (b) (3) and (4).

G. Plugging and abandoning. Cement plugs must be placed in the wellbore as required by Statewide Rule 14. The District Director may require additional cement plugs. For onshore or inland wells, a 10-foot cement plug must be placed in the top of the well, and the casing must be cut off three feet below the ground surface. All cement plugs, except the top plug, must have sufficient slurry volume to fill 100 feet of hole, plus ten percent for each 1,000 feet of depth from the ground surface to the bottom of the plug.

To plug and abandon a well, operators must use only cementers approved by the Director of Field Operations. Cementing companies, service companies, or operators can qualify as approved cementers by demonstrating that they are able to mix and pump cement in compliance with Commission rules and regulations.

Cementor: Fill in shaded areas
Operator: Fill in other items

Form W-15
Cementing Report
Rev.4/1/83
HAL1199

RAILROAD COMMISSION OF TEXAS
Oil and Gas Division

1. Operator's Name (As Shown on Form P-5, Organization Report) Petrohawk Operating Company	2. RRC Operator No. 660146	3. RRC District No. 7C	4. County of Well Site CROCKETT
5. Field Name (Wildcat or Exactly as Shown on RRC Records) LIN (WOLFCAMP)		6. API No. 42- 105-41480	7. Drilling Permit No. 739788
8. Lease Name UNIVERSITY 46	9. Rule 37 Case No.	10. Oil Lease/Gas ID No.	11. Well No. 1304H

CASING CEMENTING DATA:		SURFACE CASING	INTER-MEDIATE CASING	PRODUCTION CASING		MULTI-STAGE CEMENTING PROCESS	
				Single String	Multiple Parallel Strings	Tool	Shoe
12. Cementing Date				8/23/2012			
13. *Drilled hole size				8 3/4			
*Est. % wash or hole enlargement							
14. Size of casing (in. O.D.)				5 1/2			
15. Top of liner (ft)							
16. Setting depth (ft)				14012			
17. Number of centralizers used				10			
18. Hrs. waiting on cement before drill-out				24+			
1st Slurry	19. API cement used: No. of sacks ▶			620			
	Class ▶			ECONOCHEM-H			
	Additives ▶			SEE REMARKS			
2nd Slurry	No. of sacks ▶			2230			
	Class ▶			VERSACHEM-H			
	Additives ▶			SEE REMARKS			
3rd Slurry	No. of sacks ▶						
	Class ▶						
	Additives ▶						
1st	20. Slurry pumped: Volume (cu.ft.) ▶			1463			
	Height (ft.) ▶			5792			
2nd	Volume (cu.ft.) ▶			3077			
	Height (ft.) ▶			12135			
3rd	Volume (cu.ft.) ▶						
	Height (ft.) ▶						
Total	Volume (cu.ft.) ▶			4540			
	Height (ft.) ▶			17927			
21. Was cement circulated to ground surface (or bottom of cellar) outside casing?				YES			

22. Remarks No drill-out 1ST SLURRY 620 SKS OF ECONOCHEM-H 10% BENTONITE, 5% POTASSIUM CHLORIDE 7%, 0.1% SA-1015, 0.25 LBM D-AIR 5000, 0.6% HR-5 2ND SLURRY 2230 SKS OF VERSACHEM-H, 0.6% LAP-1, 0.4% CFR-3, 0.05% SA1015, 3% POTASSIUM SHLORIDE 3%, 9% MIROBOND, 0.35% HR-12 CIRCULATED 166.5 SKS OF LEAD CEMENT TO SURFACE	Sales Order 9724356 Customer Name PETROHAWK ENERGY CORPORATION Lease University Well Number 46-13 04H Crockett County
--	---

RECEIVED
SEP 05 2012
REGULATORY DEPT.

OVER ►

CEMENTING TO PLUG AND ABANDON	PLUG #1	PLUG #2	PLUG #3	PLUG #4	PLUG #5	PLUG #6	PLUG #7	PLUG #8
23. Cementing date								
24. Size of hole or pipe plugged (in.)								
25. Depth to bottom of tubing or drill pipe (ft.)								
26. Sacks of cement used (each plug)								
27. Slurry volume pumped (cu.ft.)								
28. Calculated top of plug (ft.)								
29. Measured top of plug, if tagged (ft.)								
30. Slurry wt. (lbs/gal)								
31. Type cement								

CEMENTER'S CERTIFICATE: I declare under penalties prescribed in Sec. 91.143, Texas Natural Resources Code, that I am authorized to make this certification, that the cementing of casing and/or the placing of cement plugs in this well as shown in the report was performed by me or under my supervision, and that the cementing data and facts presented on both sides of this form are true, correct, and complete, to the best of my knowledge. This certification covers cementing data only.

CARLOS BALVANTIN(SERVICE SUPERVISOR)
Name and Title of Cemente's Representative

Halliburton Energy Services
Cementing Company


Signature

6155 W MURPHY ST ODESSA TX 79763
Address City State, Zip Code

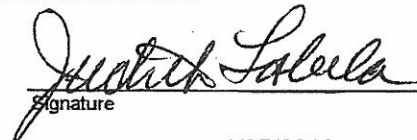
1-800-844-8451
Tel: Area Code Number

8/23/2012
Date: Mo. Day Yr.

OPERATOR'S CERTIFICATE: I declare under penalties prescribed in Sec. 91.143, Texas Natural Resources Code, that I am authorized to make this certification, that I have knowledge of the well data and information presented in this report, and that data and facts presented on both sides of this form are true, correct, and complete, to the best of my knowledge. This certification covers all well data.

Judith Fabela
Typed or Printed Name of Operator's Representative

Sr. Regulatory Specialist
Title


Signature

1000 Louisiana, STE 5600, Houston, Tx 77002
Address City, State, Zip Code

713-821-5078
Tel: Area Code Number

1/25/2013
Date: Mo. Day Yr.

Instruction to Form W-15, Cementing Report

IMPORTANT: Operators and cementing companies must comply with the requirements of the Commission's Statewide rules 8 (Water Protection), 13 (Casing, Cementing, Drilling, and Completion, and 14 (Well Plugging). For offshore operations, see the requirements of Rule 13 (c).

A. What to file. An operator should file an original and one copy of the completed Form W-15 for each cementing company used on a well. The cementing of different casing strings on a well by one cementing company may be reported on one form. Form W-15 should be filed with the following:

- * An initial oil or gas completion report, Form W-2 or G-1, as required by Statewide or special field rules;
- * Form W-4, Application for Multiple Completion, if the well is a multiple parallel casing completion; and
- * Form W-3, Plugging Record, unless the W-3 is signed by the cementing company representative. When reporting dry holes, operators must complete

*Form W-15, in addition to Form W-3, to show any casing cemented in the hole.

B. Where to file. The appropriate Commission District Office for the county in which the well is located.

C. Surface casing. An operator must set and cement sufficient surface casing to protect all usable-quality water strata, as defined by the Texas Department of Water Resources, Austin. Before drilling a well in any field or area in which no field rules are in effect or in which surface casing requirements are not specified in the applicable rules, an operator must obtain a letter from the Department of Water Resources stating the protection depth. Surface casing should not be set deeper than 200 feet below the specified depth without prior approval from the Commission.

D. Centralizers. Surface casing must be centralized at the shoe, above and below a stage collar or diverting tool, if run, and through usable-quality water zones. In nondeviated holes, a centralizer must be placed every fourth joint from the cement shoe to the ground surface or to the bottom of the cellar. All centralizers must meet API specifications.

E. Exceptions and alternative casing programs. The District Director may grant an exception to the requirements of Statewide Rule 13. In a written application, an operator must state the reason for the requested exception and outline an alternate program for casing and cementing through the protection depth for strata containing usable-quality water. The District Director may approve, modify, or reject a proposed program. An operator must obtain approval of any exception before beginning casing and cementing operations.

F. Intermediate and production casing. For specific technical requirements, operators should consult Statewide Rule 13 (b) (3) and (4).

G. Plugging and abandoning. Cement plugs must be placed in the wellbore as required by Statewide Rule 14. The District Director may require additional cement plugs. For onshore or inland wells, a 10-foot cement plug must be placed in the top of the well, and the casing must be cut off three feet below the ground surface. All cement plugs, except the top plug, must have sufficient slurry volume to fill 100 feet of hole, plus ten percent for each 1,000 feet of depth from the ground surface to the bottom of the plug.

To plug and abandon a well, operators must use only cementers approved by the Director of Field Operations. Cementing companies, service companies, or operators can qualify as approved cementers by demonstrating that they are able to mix and pump cement in compliance with Commission rules and regulations.

RAILROAD COMMISSION OF TEXAS
Oil and Gas Division

ELECTRIC LOG
STATUS REPORT

FORM L-1

Tracking No.: 83392

This facsimile L-1 was generated electronically from data submitted to the RRC.

Instructions

When to File Form L-1:

- with Forms G-1, W-2, and GT-1 for new and deepened gas, oil, and geothermal wells
- with Form W-3 for plugged dry holes
- when sending in a log which was held under a request for confidentiality and the period for confidentiality has not yet expired.

When is Form L-1 NOT required:

- with Forms W-2, G-1, and GT-1 filed for injection wells, disposal wells, water supply wells, service wells, re-test wells, re-classifications, and plugbacks of oil, gas or geothermal wells
- with Form W-3 for plugging of other than a dry hole

Where to File Form L-1:

- with the appropriate Commission district office

Filling out Form L-1:

- Section I and the signature section must be filled out for all wells
- complete only the appropriate part of Section II

Type of log required:

- any wireline survey run for the purpose of obtaining lithology, porosity, or resistivity information
- no more than one such log is required but it must be of the subject well
- if such log is NOT run on the subject well, do NOT substitute any other type of log; just select Section II, Part A below

SECTION I. IDENTIFICATION

Operator Name: BHP BILLITON PET(TXLA OP) CO	District No. 7C	Completion Date: 07/25/2013
Field Name LIN (WOLFCAMP)	Drilling Permit No. 739788	
Lease Name UNIVERSITY 46	Lease/ID No. 17949	Well No. 1304H
County CROCKETT	API No. 42- 105-41480	

SECTION II. LOG STATUS (Complete either A or B)

☐ A. BASIC ELECTRIC LOG NOT RUN

☒ B. BASIC ELECTRIC LOG RUN. (Select one)

- ☒ 1. Confidentiality is requested and a copy of the header for each log that has been run on the well is attached.
- ☐ 2. Confidentiality already granted on basic electric log covering this interval (applicable to deepened wells only).
- ☐ 3. Basic electric log covering this interval already on file with Commission (applicable to deepened wells only).
- ☐ 4. Log attached to (select one):
- ☐ (a) Form L-1 (this form). If the company/lease name on log is different from that shown in Section I, please enter name on log here: _____
- Check here if attached log is being submitted after being held confidential. ☐
- ☐ (b) Form P-7, Application for Discovery Allowable and New Field Designation.
- ☐ (c) Form W-4, Application for Multiple Completion:
- Lease or ID No(s). _____
- Well No(s). _____

Greg Bilbro

Signature

Name (print)

DRGA

Title

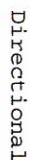
(512) 476-1245

Phone

09/07/2013

Date

-FOR RAILROAD COMMISSION USE ONLY-



Run Data						
RUN NUMBER	1	2	3	4	5	6
START DATE	8/5/2012	8/7/2012	8/7/2012	8/10/2012	8/11/2012	8/13/2012
START TIME	19:00	1:00	19:30	16:00	14:15	3:30
END DATE	8/6/2012	8/8/2012	8/10/2012	8/11/2012	8/13/2012	8/16/2012
END TIME	14:45	16:00	14:00	13:00	2:00	14:45
DEPTH IN (ft)	965	1441	4771	5920	6016	6510
DEPTH OUT (ft)	1441	4771	5920	6016	6510	11564
LOG TOP (ft)	-	-	4800	5879	5974	6474
LOG BOTTOM (ft)	-	-	5879	5974	6474	11522
HOLE SIZE (in)	8.75	8.75	8.75	8.75	8.75	8.75
MUD DATA @ (ft)	1209	2090	5511	6016	6301	10706
MUD TYPE	Brine	Brine	Brine	Brine	Brine	Brine
DENSITY (lb / gal)	9.8	10.0	10.1	10.2	10.2	10.3
VISCOSITY (s / qt)	29	30	30	31	31	34
pH	9.6	9.8	9.9	10.1	10.1	9.8
FLUID LOSS (cm3 / 30)	-	-	-	-	-	-
SALINITY (ppm)	-	-	-	-	-	-
Rm (ohmm @ deg F)	-	-	-	-	-	-
Rmf (ohmm @ deg F)	-	-	-	-	-	-
MAX TEMP (deg F)	98	123	121	118	143	160
Rm @ MAX TEMP (ohmm)	-	-	-	-	-	-
LWD ENGINEER #1	Bobby Hughes	Bobby Hughes	Bobby Hughes	Bobby Hughes	Bobby Hughes	Bobby Hughes
LWD ENGINEER #2	Dusty Courville	Dusty Courville	Dusty Courville	Dusty Courville	Dusty Courville	Dusty Courville
LWD ENGINEER #3						

STATEMENT OF PRODUCTIVITY OF ACREAGE
ASSIGNED TO PRORATION UNITS

Form P-15

Tracking No.: 83392

This facsimile P-15 was generated electronically
from data submitted to the RRC.

The undersigned states that he is authorized to make this statement; that he has knowledge of the facts concerning the BHP BILLITON PET(TXLA OP) CO ,

OPERATOR

UNIVERSITY 46

LEASE

No. 1304H

WELL

; that such well is

completed in the LIN (WOLFCAMP) Field, CROCKETT County,

Texas and that the acreage claimed, and assigned to such well for proration purposes as authorized by special rule and as shown on the attached certified plat embraces _____

300.0 acres which can reasonably be considered to be productive of hydrocarbons.

- CERTIFICATE -

I declare under penalties prescribed in Sec. 91.143, Texas Natural Resources Code, that I am authorized to make this report, that this report was prepared by me or under my supervision and direction, and that data and facts stated therein are true, correct, and complete, to the best of my knowledge,

Date 09/07/2013

Signature Greg Bilbro

Telephone (512) 476-1245

AREA CODE

Title DRGA

Proration Acreage List

14655.3 Acres

<i>University 46 Lease</i>		
Well #	API	Acreage
1302H	105-41456	340
1304H	105-41480	300
1601H	105-41411	320
2401H	105-41357	340
2402H	105-41448	320
2403H	105-41462	340
2404H	105-41463	320

Total Assigned: 1640

Groundwater
Advisory Unit

GROUNDWATER PROTECTION DETERMINATION

Date **May 18, 2012**

GAU File No.: SC- **14761**

***** EXPEDITED APPLICATION *****

API Number **10541479**

Attention: **SHANNON MARES**

RRC Lease No. **000000**

SC_660146_10541479_000000_14761.pdf

PETROHAWK OPERATING CO
1000 LOUISIANA
STE 5600
HOUSTON TX 77002

P-5# 660146

--Measured--

980 ft FWL

2678 ft FSL

MRL: SURVEY

Digital Map Location:

X-coord/Long **101.35158**

Y-coord/Lat **30.96022**

Datum **27**

Zone

County **CROCKETT**

Lease & Well No. **UNIVERSITY 46 #1303H&RAD**

Purpose **ND**

Location **SUR-UL, BLK-46, SEC-13, -- [TD=7750], [RRC 7C],**

To protect usable-quality groundwater at this location, the Groundwater Advisory Unit of the Texas Railroad Commission recommends:

The interval from the land surface to the base of the SANTA ROSA, which is estimated to occur at a depth of 800 feet, must be protected.

This recommendation is applicable to all wells within a radius of 200 feet of this location.

This letter supersedes our letter of May 11, 2012 and amends the well number.

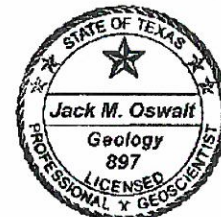
Note: Unless stated otherwise, this recommendation is intended to apply only to the subject well and not for area-wide use. **This recommendation is intended for normal drilling, production, and plugging operations only. It does not apply to saltwater disposal operation into a nonproductive zone (RRC Form W-14).**

If you have any questions, please contact us at 512-463-2741, gau@rrc.state.tx.us, or by mail.

Sincerely,

Jack M. Oswalt, P.G.

GEOLOGIST SEAL

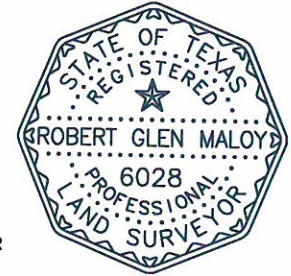


Geologist, Groundwater Advisory Unit
Oil & Gas Division

The seal appearing on this document was authorized by Jack M. Oswalt on 5/18/2012
Note: Alteration of this electronic document will invalidate the digital signature.

I HEREBY STATE THAT THIS PLAT
SHOWS THE SUBJECT LOCATION BASED
ON INFORMATION PROVIDED BY
THE CLIENT.

Robert Glen Maloy
ROBERT GLEN MALOY
REGISTERED PROFESSIONAL LAND SURVEYOR
LICENSE NO. 6028



GENERAL NOTES

- COORDINATES SHOWN ARE BASED ON TEXAS COORDINATE SYSTEM OF NAD 1983, TEXAS CENTRAL ZONE (TEXAS WEST HARN) AND ARE BASED ON THE MONUMENT "SCHNEEMAN" (Y = 10,333,230, X = 1,957,295)
- VERTICAL DATUM IS NAVD 88
- LATITUDE AND LONGITUDE ARE NAD 83 GEOGRAPHIC
- AREA, DISTANCES, AND COORDINATES ARE "GRID"
- UNITS ARE UNITED STATES SURVEY FOOT.
- COMBINED SCALE FACTOR = 0.999763023.
- ALL LEASE AND TRACT INFORMATION SHOWN HEREON IS DONE SO BY LIMITED DEED RECORD INFORMATION ONLY. ALL ACREAGES SHOWN ARE BY DEED AND LEASE CALL, EXCEPT WHERE NOTED. THIS IS NOT IN ANY WAY A "BOUNDARY SURVEY"
- ELEVATIONS SHOWN IN THE LINE TABLE REPRESENT THE ELEVATION AT THE END OF THAT LINE SEGMENT IN THE DIRECTION FROM THE PREVIOUS POINT.



PETROHAWK Operating Company
6100 S. Yale Ave.
Suite 500
Tulsa, Oklahoma 74136

REV.	DATE	BY	REVISIONS MADE
1	03/23/12	GG	MAKE PRELIMINARY
2	04/10/12	BB	NAME CHANGE
3	04/20/12	BB	CHANGED SHL
4	04/27/12	GG	CHANGED LEASE NAME

PLAT OF:

A PROPOSED ACCESS ROAD AND POND SITE FOR:

PETROHAWK OPERATING CO.

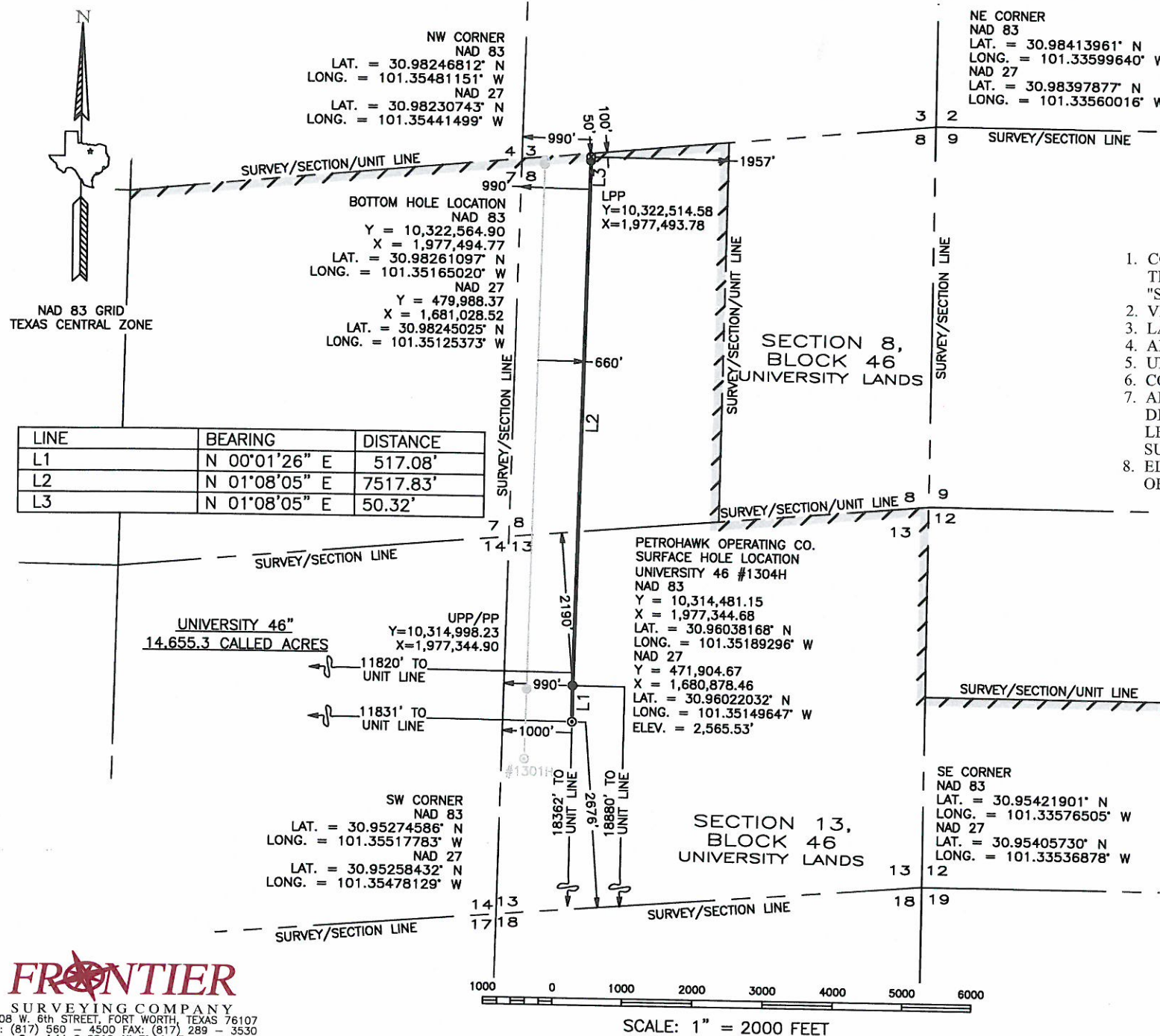
UNIVERSITY 46 #1304H

SITUATED IN SECTION 13 AND SECTION 8, BOTH
OF BLOCK 46, OUT OF THE UNIVERSITY LANDS,
LOCATED APPROX. 18 MILES NORTHWEST OF
OZONA, CROCKETT COUNTY, TEXAS

Completion Date: 3-23-12 File Name: 1203114

Scale: 1" = 2000' Surveyed by: RR/WB

Drawn by: GG Checked by: RM



PLOT DATE: 04-30-2012 3:35 P.M.

FRONTIER

SURVEYING COMPANY
3108 W. 6TH STREET, FORT WORTH, TEXAS 76107
PH: (817) 560 - 4500 FAX: (817) 289 - 3530
Copyright © 2010 All Rights Reserved