

# RAILROAD COMMISSION OF TEXAS

Tracking No.: 42294

Status: Submitted

Oil and Gas Division

This facsimile W-2 was generated electronically  
from data submitted to the RRC.

API No. 42- 105-41318

7. RRC District No.  
7C

8. RRC Lease No.

## Oil Well Potential Test, Completion or Recompletion Report, and Log

1. FIELD NAME (as per RRC Records or Wildcat) <b>HOLT RANCH (CONSOLIDATED)</b>		2. LEASE NAME <b>UNIVERSITY "45 E"</b>		9. Well No. <b>2004</b>	
3. OPERATOR'S NAME (Exactly as shown on Form P-5, Organization Report) <b>APPROACH OPERATING LLC</b>		RRC Operator No. <b>028625</b>		10. County of well site <b>CROCKETT</b>	
4. ADDRESS <b>ONE RIDGMAR CENTRE 6500 WEST FREEWAY SUITE 800 FORT WORTH, TX 76116-0000</b>				11. Purpose of filing Initial Potential <input checked="" type="checkbox"/> Retest <input type="checkbox"/> Reclass <input type="checkbox"/> Well record only (Explain in remarks) <input type="checkbox"/>	
5. If Operator has changed within last 60 days, name former operator					
6a. Location (Section, Block, and Survey) <b>20 , 45 , UL</b>		6b. Distance and direction to nearest town in this county. <b>16 MILES N OF OZONA</b>			
12. If workover or reclass, give former field (with reservoir) & Gas ID or oil lease no. <b>FIELD &amp; RESERVOIR</b>			GAS ID or OIL LEASE #	Oil-O Gas-G	Well #
13. Type of electric or other log run <b>Neutron/Density logs (combo of tools)</b>			14. Completion or recompletion date <b>12/13/2011</b>		

### SECTION I- POTENTIAL TEST DATA IMPORTANT: Test should be for 24 hours unless otherwise specified infield rules.

15. Date of test <b>03/16/2012</b>		16. No. of hours tested <b>24</b>		17. Production method (Flowing, Gas Lift, Jetting, Pumping- Size & Type of pump) <b>Gas Lift</b>			18. Choke size	
19. Production during Test Period	Oil - BBLS <b>10.0</b>	Gas - MCF <b>0</b>	Water - BBLS <b>5</b>	Gas - Oil Ratio <b>0</b>		Flowing Tubing Pressure <b>640.0</b> PSI		
	20. Calculated 24-Hour Rate	Oil - BBLS <b>10.0</b>	Gas - MCF <b>0</b>	Water - BBLS <b>5</b>	Oil Gravity-API-60° <b>43.3</b>			
21. Was swab used during this test? Yes <input type="checkbox"/> No <input checked="" type="checkbox"/>		22. Oil produced prior to test (New & Reworked wells) <b>394.0</b>				23. Injection Gas-Oil Ratio		
REMARKS: WELL IS ON PLUNGER LIFT								

**INSTRUCTIONS:** File an original and one copy of the completed Form W-2 in the appropriate RRC District Office within 30 days after completing a well and within 10 days after a potential test. If an operator does not properly report the results of a potential test within the 10-day period, the effective date of the allowable assigned to the well will not extend back more than 10 days before the W-2 was received in the District Office. (Statewide Rules 16 and 51) To report a completion or recompletion, fill in both sides of this form. To report a retest, fill in only the front side.

#### WELL TESTERS CERTIFICATION

I declare under penalties prescribed in Sec. 91.143, Texas Natural Resources Code, that I conducted or supervised this test by observation of (a) meter readings or (b) the top and bottom gauges of each tank into which production was run during the test. I further certify that the potential test data shown above is true, correct, and complete, to the best of my knowledge.

Signature: Well Tester

Name of Company

RRC Representative

#### OPERATOR'S CERTIFICATION

I declare under penalties prescribed in Sec. 91.143, Texas Natural Resources Code, that I am authorized to make this report, that this report was prepared by me or under my supervision and direction, and that data and facts stated therein are true, correct and complete, to the best of my knowledge.

Type or printed name of operator's representative

**(817) 989-9000 EXT 2143**

**04/11/2012**

Telephone: Area Code

Number

Month Day Year

Regulatory Manager

Title of Person

**James Melear**

Signature

SECTION III				DATA ON WELL COMPLETION AND LOG (Not Required on Retest)			
24. Type of Completion New Well <input checked="" type="checkbox"/> Deepening <input type="checkbox"/> Plug Back <input type="checkbox"/> Other <input type="checkbox"/>				25. Permit to Drill, Plug Back or Deepen DATE 08/19/2011 PERMIT NO. 722459 Rule 37 Exception CASE NO.			
26. Notice of Intention to Drill this well was filed in Name of <b>APPROACH OPERATING LLC</b>				Water Injection Permit PERMIT NO. Salt Water Disposal Permit PERMIT NO. Other PERMIT NO.			
27. Number of producing wells on this lease in this field (reservoir) including this well <b>6</b>		28. Total number of acres in this lease <b>1350.6</b>					
29. Date Plug Back, Deepening, Workover or Drilling Operations: <b>10/30/2011</b>		Commenced <b>11/07/2011</b>		Completed <b>1247.0</b>		30. Distance to nearest well, Same Lease & Reservoir	
31. Location of well, relative to nearest lease boundaries <b>593.0</b> Feet From <b>South</b> Line and <b>734.0</b> Feet from <b>West</b> Line of the <b>UNIVERSITY "45 E"</b> Lease							
32. Elevation (DF, RKB, RT, GR ETC.) <b>2632</b> <b>GL</b>				33. Was directional survey made other than inclination (Form W-12)? <input type="checkbox"/> Yes <input checked="" type="checkbox"/> No			
34. Top of Pay <b>5598</b>	35. Total Depth <b>8100</b>	36. P. B. Depth <b>8038</b>	37. Surface Casing Determined by Field Rules <input type="checkbox"/>	Recommendation of T.D.W.R. <input checked="" type="checkbox"/> Railroad Commission (Special) <input type="checkbox"/>		Dt. of Letter <b>08/26/2011</b> Dt. of Letter	
38. Is well multiple completion? <input type="checkbox"/> Yes <input checked="" type="checkbox"/> No							
39. If multiple completion, list all reservoir names (completions in this well) and Oil Lease or Gas ID No. <b>FIELD &amp; RESERVOIR</b> <b>N/A</b>				GAS ID or OIL LEASE #		Oil-G Gas-G	
40. Intervals Drilled by: Rotary Tools <input checked="" type="checkbox"/> Cable Tools		41. Name of Drilling Contractor <b>RINGO</b>				42. Is Cementing Affidavit Attached? <input checked="" type="checkbox"/> Yes <input type="checkbox"/> No	
43. CASING RECORD (Report All Strings Set in Well)							
CASING SIZE	WT #/FT.	DEPTH SET	MULTISTAGE TOOL DEPTH	TYPE & AMOUNT CEMENT (sacks)	HOLE SIZE	TOP OF CEMENT	SLURRY VOL. cu. ft.
13 3/8	48.0	853		C 685	17 1/2	SURFACE	2040.0
8 5/8	32.0	2054		C 685	12 1/4	SURFACE	2359.0
5 1/2	17.0	8095		H 700	7 7/8	1551	1134.0
44. LINER RECORD							
Size	Top	Bottom	Sacks Cement	Screen			
N/A							
45. TUBING RECORD							
Size	Depth Set	Packer Set	From	7818	To	7950	
2 3/8	7771		From		To		
			From		To		
			From		To		
46. PRODUCING INTERVAL (this completion) Indicate depth of perforation or open hole							
47. ACID, SHOT, FRACTURE, CEMENT SQUEEZE, ETC.							
Depth Interval			Amount and Kind of Material Used				
7818.0	7950.0	18 BBLS 10% HCL & FRAC W/ CO2 FOAM & 88,430 # 20/40 MESH PROP					
48. FORMATION RECORD (LIST DEPTHS OF PRINCIPAL GEOLOGICAL MARKERS AND FORMATION TOPS)							
Formations	Depth	Formations	Depth				
L-5 MARKER	4132.0						
L-4 MARKER	4592.0						
WOLFCAMP	5598.0						
REMARKS: N/A							

Cementor: Fill in shaded areas.  
Operator: Fill in other items.

**RAILROAD COMMISSION OF TEXAS**  
**Oil and Gas Division**

Form W-15  
Cementing Report  
Rev. 4/1/83  
483-045

1. Operator's Name (As shown on Form P-5, Organization Report) <b>APPROACH OPERATING LLC</b>		2. RRC Operator No. <b>028625</b>	3. RRC District No. <b>7C</b>	4. County of Well Site <b>CROCKETT</b>
5. Field Name (Wildcat or exactly as shown on RRC Records) <b>HOLT RANCH (CONSOLIDATED)</b>			6. API No. <b>105-41318</b>	7. Drilling Permit No. <b>722459</b>
8. Lease Name <b>UNIVERSITY '45 E'</b>		9. Rule 37 Case No.	10. Oil Lease/Gas ID No.	11. Well No. <b>2004</b>

CASING CEMENTING DATA:		SURFACE CASING	INTER-MEDIATE CASING	PRODUCTION CASING		MULTI-STAGE CEMENTING PROCESS	
				Single String	Multiple Parallel Strings	Tool	Shoe
12. Cementing Date		<b>11/1/11</b>					
13. • Drilled Hole Size		<b>17-1/2"</b>					
• Est. % wash or hole enlargement							
14. Size of casing (in. O.D.)							
15. Top of liner (ft.)							
16. Setting depth (ft.)		<b>853'</b>					
17. Number of centralizers used		<b>6</b>					
18. Hrs. Waiting on cement before drill-out		<b>13</b>					
1 <sup>st</sup> Slurry	19. API cement used: No. of sacks ▶	<b>350</b>					
	Class ▶	<b>"C"</b>					
	Additives ▶	<b>#22</b>					
2 <sup>nd</sup> Slurry	No. of sacks ▶	<b>335</b>					
	Class ▶	<b>"C"</b>					
	Additives ▶	<b>#22</b>					
3 <sup>rd</sup> Slurry	No. of sacks ▶						
	Class ▶						
	Additives ▶						
1 <sup>st</sup>	20. Slurry pumped: Volume (cu. ft.) ▶	<b>794</b>					
	Height (ft.) ▶	<b>1143</b>					
2 <sup>nd</sup>	Volume (cu. ft.) ▶	<b>452</b>					
	Height (ft.) ▶	<b>650</b>					
3 <sup>rd</sup>	Volume (cu. ft.) ▶						
	Height (ft.) ▶						
Total	Volume (cu. ft.) ▶	<b>1246</b>					
	Height (ft.) ▶	<b>1793</b>					
21. Was cement circulated to ground surface (or bottom of cellar) outside casing ?		<b>NO</b>					
Remark: 1 <sup>st</sup> slurry - "C" 65/35 POZ + 6% Gel+ 3% SMS+ 2% CaCl <sub>2</sub> + 3pps A-10+ 5pps Kolseal+ .25pps Cello+ .01% Static Free 2 <sup>nd</sup> slurry- "C" + 2% CaCl <sub>2</sub> + 2pps Kolseal+.01% Static Free <b>TOPPED OUT CELLAR WITH 100 SACKS (24 BBLS) AT 14.8 PPG AFTER TEMP SURVEY</b>							

CEMENTING TO PLUG AND ABANDON	PLUG #1	PLUG #2	PLUG #3	PLUG #4	PLUG #5	PLUG #6	PLUG #7	PLUG #8
23. Cementing date								
24. Size of hole or pipe plugged (in.)								
25. Depth to bottom of tubing or drill pipe (ft.)								
26. Sacks of cement used (each plug)								
27. Slurry volume pumped (cu. ft.)								
28. Calculated top of plug (ft.)								
29. Measured top of plug, if tagged (ft.)								
30. Slurry wt. (lb/gal)								
31. Type cement								

CEMENTER'S CERTIFICATE: I declare under penalties in Sec. 91.143, Texas Natural Resources Code, that I am authorized to make this Certification, that the cementing of casing and/or the placing of cement plugs in this well as shown in the report was performed by me or under my Supervision, and that the cementing data and facts presented on both sides of this form are true, correct, and complete, to the best of my knowledge. This certification covers cementing data only.

**Robert J. Carles, Service Supervisor**

Name and title of cementer's representative

**BJ Services Company**

Cementing Company

Signature

P.O. Box 1135

Address

**Eldorado**

City,

**Texas**

State,

**76936**

Zip Code

**(325) 853-2553**

Tel.: Area Code Number

**11/1/2011**

Date: mo. day yr.

OPERATOR'S CERTIFICATE: I declare under penalties prescribed in Sec. 91.143, Texas Natural Resources Code, that I am authorized to make this certification, that I have knowledge of the well data and information presented in this report, and that data and facts presented on both sides of this form Are true, correct, and complete, to the best of my knowledge. This certification covers all well data.

**JAMES C. MELEAR**

Typed or printed name of operator's representative

**REGULATORY MANAGER**

Title

Signature

**6500 WEST FREEWAT SUITE 800**

Address

**FT. WORTH, TX 76116**

City, State, Zip Code

**(817) 546-8483**

Tel.: Area Code Number

**04/09/2012**

Date: mo. day yr.

Instructions to Form W-15, Cementing Report

**IMPORTANT: Operators and cementing companies must comply with the requirements of the Commission's Statewide Rules 8 (Water Protection), 13 (Casing, Cementing, Drilling, and Completion), and 14 (Well Plugging). For offshore operations, see the requirements of Rule 13 (c).**

- A. What to file. An operator should file an original and one copy of the completed Form W-15 for each cementing company used on a well. The cementing of different casing strings on a well by one cementing company may be reported on one form. Form W-15 should be filed with the following.
- An initial oil or gas completion report, Form W-2 or G-1, as required by Statewide or special field rates;
  - Form W-4, Application for Multiple Completion, if the well is a multiple parallel casing completion; and
  - Form W-3, Plugging Record, unless the W-3 is signed by the cementing company representative. When reporting dry holes, operators must complete Form W-15, in addition to Form W-3, to show any casing cemented in the hole.
- B. Where to file. The appropriate Commission District Office for the county in which the well is located.
- C. Surface Casing. An operator must set and cement sufficient surface casing to protect all usable-quality water strata, as defined by the Texas Department of Water Resources, Austin. Before drilling a well in any field or area in which no field rules are in effect or in which surface casing requirements are not specified in the applicable rules, an operator must obtain a letter from the Department of Water Resources stating the protection depth. Surface casing should not be set deeper than 200 feet below the specified depth without prior approval from the Committee.
- D. Centralizers. Surface Casing must be centralized at the shoe, above and below a stage collar or diverting tool, if run, and through usable-quality water zones. In Non-deviated holes, a centralizer must be placed every fourth joint from the cement shoe to the ground surface or to the bottom of the cellar. All centralizers must meet API specifications.
- E. Exceptions and alternative casing programs. The District Director may grant an exception to the requirements of Statewide Rule 13. In a written application, an operator must state the reason for the requested exception and outline an alternate program for casing and cementing through the protection depth for strata containing usable-quality water. The District Director may approve, modify, or reject a proposed program. An operator must obtain approval of any exception before beginning casing and cementing operations.
- F. Intermediate and production casing. For specific technical requirements, operators should consult Statewide Rule 13 (3) and (4).
- G. Plugging and abandoning. Cement plugs must be placed in the wellbore as required by Statewide Rule 14. The District Director may require additional cement plugs. For onshore or inland wells, a 10-foot cement plug must be placed in the top of the well, and the casing must be cut off three foot below the ground surface. All cement plugs, except the top plug, must have sufficient slurry volume to fill 100 feet of hole, plus ten percent for each 1,000 feet of depth from the ground surface to the bottom of the plug.

To plug and abandon a well, operators must use only cementers approved by the Director of Field Operations, Cementing companies, service companies or operators can qualify as approved cementers by demonstrating that they are able to mix and pump cement in compliance with Commission rules and regulations.

Cementer: Fill in shaded areas.  
Operator: Fill in other items.

**RAILROAD COMMISSION OF TEXAS**  
**Oil and Gas Division**

Form W-15  
Cementing Report  
Rev. 4/1/83  
483-045

1. Operator's Name (As shown on Form P-5, Organization Report) <b>APPROACH OPERATING LLC</b>		2. RRC Operator No. <b>028625</b>	3. RRC District No. <b>7C</b>	4. County of Well Site <b>CROCKETT</b>
5. Field Name (Wildcat or exactly as shown on RRC Records) <b>HOLT RANCH (CONSOLIDATED)</b>			6. API No. <b>105-41318</b>	7. Drilling Permit No. <b>722459</b>
8. Lease Name <b>UNIVERSITY 45 E</b>		9. Rule 37 Case No.	10. Oil Lease/Gas ID No.	11. Well No. <b>2004</b>

CASING CEMENTING DATA:		SURFACE CASING	INTER-MEDIATE CASING	PRODUCTION CASING		MULTI-STAGE CEMENTING PROCESS	
				Single String	Multiple Parallel Strings	Tool	Shoe
12. Cementing Date			<b>11-2-11</b>				
13. • Drilled Hole Size			<b>12-1/4"</b>				
• Est. % wash or hole enlargement							
14. Size of casing (in. O.D.)			<b>8-5/8"</b>				
15. Top of liner (ft.)							
16. Setting depth (ft.)			<b>2054</b>				
17. Number of centralizers used			<b>15</b>				
18. Hrs. Waiting on cement before drill-out			<b>21-1/2</b>				
1 <sup>st</sup> Slurry	19. API cement used: No. of sacks ▶		<b>450</b>				
	Class ▶		<b>C</b>				
	Additives ▶		<b>#21</b>				
2 <sup>nd</sup> Slurry	No. of sacks ▶		<b>235</b>				
	Class ▶		<b>C</b>				
	Additives ▶		<b>#21</b>				
3 <sup>rd</sup> Slurry	No. of sacks ▶						
	Class ▶						
	Additives ▶						
1 <sup>st</sup>	20. Slurry pumped: Volume (cu. ft.) ▶		<b>1022</b>				
	Height (ft.) ▶		<b>2476</b>				
2 <sup>nd</sup>	Volume (cu. ft.) ▶		<b>315</b>				
	Height (ft.) ▶		<b>763</b>				
3 <sup>rd</sup>	Volume (cu. ft.) ▶						
	Height (ft.) ▶						
Total	Volume (cu. ft.) ▶		<b>1337</b>				
	Height (ft.) ▶		<b>3239</b>				
21. Was cement circulated to ground surface (or bottom of cellar) outside casing ?			<b>YES</b>				
<b>Remark:</b> <b>LEAD – (65/35)Poz+6%Gel+3%SMS+2%CaCl2+5ppsKolSeal+3ppsA-10+.25ppsCelloflake</b> <b>TAIL – C+2%CaCl2+2ppsKolSeal</b> <b>Circulated 62 sacks</b>							

CEMENTING TO PLUG AND ABANDON	PLUG #1	PLUG #2	PLUG #3	PLUG #4	PLUG #5	PLUG #6	PLUG #7	PLUG #8
23. Cementing date								
24. Size of hole or pipe plugged (in.)								
25. Depth to bottom of tubing or drill pipe (ft.)								
26. Sacks of cement used (each plug)								
27. Slurry volume pumped (cu. ft.)								
28. Calculated top of plug (ft.)								
29. Measured top of plug, if tagged (ft.)								
30. Slurry wt. (lb/gal)								
31. Type cement								

CEMENTER'S CERTIFICATE: I declare under penalties in Sec. 91.143, Texas Natural Resources Code, that I am authorized to make this Certification, that the cementing of casing and/or the placing of cement plugs in this well as shown in the report was performed by me or under my Supervision, and that the cementing data and facts presented on both sides of this form are true, correct, and complete, to the best of my knowledge. This certification covers cementing data only.

**Mark Holden Service Supervisor**  
Name and title of cementer's representative

**BJ Services Company**  
Cementing Company

**P.O. Box 1135**  
Address

**Eldorado Texas 76936**  
City, State, Zip Code

**(325) 853-2553**  
Tel: Area Code Number

**11-2-11**  
Date: mo. day yr.

Signature

OPERATOR'S CERTIFICATE: I declare under penalties prescribed in Sec. 91.143, Texas Natural Resources Code, that I am authorized to make this certification, that I have knowledge of the well data and information presented in this report, and that data and facts presented on both sides of this form Are true, correct, and complete, to the best of my knowledge. This certification covers all well data.

**JAMES C. MELEAR**  
Typed or printed name of operator's representative

**REGULATORY MANAGER**  
Title

**6500 WEST FREEWAY SUITE 800 FT. WORTH, TX 76116**  
Address

**(817) 546-8483**  
Tel.: Area Code Number

**04/09/2012**  
Date: mo. day yr.

Signature

#### Instructions to Form W-15, Cementing Report

**IMPORTANT: Operators and cementing companies must comply with the requirements of the Commission's Statewide Rules 8 (Water Protection), 13 (Casing, Cementing, Drilling, and Completion), and 14 (Well Plugging). For offshore operations, see the requirements of Rule 13 (c).**

- A. What to file. An operator should file an original and one copy of the completed Form W-15 for each cementing company used on a well. The cementing of different casing strings on a well by one cementing company may be reported on one form. Form W-15 should be filed with the following.
- An initial oil or gas completion report, Form W-2 or G-1, as required by Statewide or special field rates;
  - Form W-4, Application for Multiple Completion, if the well is a multiple parallel casing completion; and
  - Form W-3, Plugging Record, unless the W-3 is signed by the cementing company representative. When reporting dry holes, operators must complete Form W-15, in addition to Form W-3, to show any casing cemented in the hole.
- B. Where to file. The appropriate Commission District Office for the county in which the well is located.
- C. Surface Casing. An operator must set and cement sufficient surface casing to protect all usable-quality water strata, as defined by the Texas Department of Water Resources, Austin. Before drilling a well in any field or area in which no field rules are in effect or in which surface casing requirements are not specified in the applicable rules, an operator must obtain a letter from the Department of Water Resources stating the protection depth. Surface casing should not be set deeper than 200 feet below the specified depth without prior approval from the Committee.
- D. Centralizers. Surface Casing must be centralized at the shoe, above and below a stage collar or diverting tool, if run, and through usable-quality water zones. In Non-deviated holes, a centralizer must be placed every fourth joint from the cement shoe to the ground surface or to the bottom of the cellar. All centralizers must meet API specifications.
- E. Exceptions and alternative casing programs. The District Director may grant an exception to the requirements of Statewide Rule 13. In a written application, an operator must state the reason for the requested exception and outline an alternate program for casing and cementing through the protection depth for strata containing usable-quality water. The District Director may approve, modify, or reject a proposed program. An operator must obtain approval of any exception before beginning casing and cementing operations.
- F. Intermediate and production casing. For specific technical requirements, operators should consult Statewide Rule 13 (3) and (4).
- G. Plugging and abandoning. Cement plugs must be placed in the wellbore as required by Statewide Rule 14. The District Director may require additional cement plugs. For onshore or inland wells, a 10-foot cement plug must be placed in the top of the well, and the casing must be cut off three feet below the ground surface. All cement plugs, except the top plug, must have sufficient slurry volume to fill 100 feet of hole, plus ten percent for each 1,000 feet of depth from the ground surface to the bottom of the plug.

To plug and abandon a well, operators must use only cementers approved by the Director of Field Operations, Cementing companies, service companies or operators can qualify as approved cementers by demonstrating that they are able to mix and pump cement in compliance with Commission rules and regulations.

Cementer: Fill in shaded areas.  
Operator: Fill in other items.

**RAILROAD COMMISSION OF TEXAS**  
**Oil and Gas Division**

Form W-15  
Cementing Report  
Rev. 4/1/83  
483-045

1. Operator's Name (As shown on Form P-5, Organization Report) <b>Approach Operating LLC</b>		2. RRC Operator No. <b>028625</b>	3. RRC District No. <b>7C</b>	4. County of Well Site <b>crockett</b>
5. Field Name (Wildcat or exactly as shown on RRC Records) <b>HOLT RANCH (CONSOLIDATED)</b>			6. API No. <b>105-41318</b>	7. Drilling Permit No. <b>722459</b>
8. Lease Name <b>University '45 E'</b>		9. Rule 37 Case No.	10. Oil Lease/Gas ID No.	11. Well No. <b>2004</b>

CASING CEMENTING DATA:			SURFACE CASING	INTER-MEDIATE CASING	PRODUCTION CASING		MULTI-STAGE CEMENTING PROCESS	
					Single String	Multiple Parallel Strings	Tool	Shoe
12. Cementing Date					<b>11-07-11</b>			
13. • Drilled Hole Size					<b>7-7/8"</b>			
• Est. % wash or hole enlargement								
14. Size of casing (in. O.D.)					<b>5-1/2"</b>			
15. Top of liner (ft.)								
16. Setting depth (ft.)					<b>8095'</b>			
17. Number of centralizers used					<b>.50</b>			
18. Hrs. Waiting on cement before drill-out					<b>N/A</b>			
1 <sup>st</sup> Slurry	19. API cement used: No. of sacks ▶				<b>700</b>			
	Class ▶				<b>"superH"</b>			
	Additives ▶				<b>#22</b>			
2 <sup>nd</sup> Slurry	No. of sacks ▶							
	Class ▶							
	Additives ▶							
3 <sup>rd</sup> Slurry	No. of sacks ▶							
	Class ▶							
	Additives ▶							
1 <sup>st</sup>	20. Slurry pumped: Volume (cu. ft.) ▶				<b>1134</b>			
	Height (ft.) ▶				<b>6544</b>			
2 <sup>nd</sup>	Volume (cu. ft.) ▶							
	Height (ft.) ▶							
3 <sup>rd</sup>	Volume (cu. ft.) ▶							
	Height (ft.) ▶							
Total	Volume (cu. ft.) ▶				<b>1134</b>			
	Height (ft.) ▶				<b>6544</b>			
21. Was cement circulated to ground surface (or bottom of cellar) outside casing ?					<b>NO</b>			
Remark: 1 <sup>st</sup> slurry —"superH" +POZ +ces2+.6%FL25 +.6% FL-52 +.2%sms+.1%R21+2.73ppssalt+2ppskolseal+.01 Static Free								

CEMENTING TO PLUG AND ABANDON	PLUG #1	PLUG #2	PLUG #3	PLUG #4	PLUG #5	PLUG #6	PLUG #7	PLUG #8
23. Cementing date								
24. Size of hole or pipe plugged (in.)								
25. Depth to bottom of tubing or drill pipe (ft.)								
26. Sacks of cement used (each plug)								
27. Slurry volume pumped (cu. ft.)								
28. Calculated top of plug (ft.)								
29. Measured top of plug, if tagged (ft.)								
30. Slurry wt. (lb/gal)								
31. Type cement								

CEMENTER'S CERTIFICATE: I declare under penalties in Sec. 91.143, Texas Natural Resources Code, that I am authorized to make this Certification, that the cementing of casing and/or the placing of cement plugs in this well as shown in the report was performed by me or under my Supervision, and that the cementing data and facts presented on both sides of this form are true, correct, and complete, to the best of my knowledge. This certification covers cementing data only.

**MARCUS CORTEZ, Service Supervisor**

Name and title of cementer's representative

**BJ Services Company**

Cementing Company

  
Signature

**P.O. Box 1135**

Address

**Eldorado**  
City,

**Texas**  
State,

**76936**  
Zip Code

**(325) 853-2553**  
Tel: Area Code Number

**11-07-11**  
Date: mo. day yr.

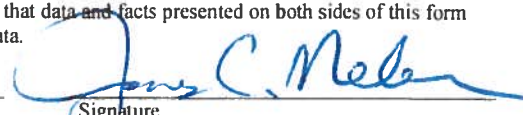
OPERATOR'S CERTIFICATE: I declare under penalties prescribed in Sec. 91.143, Texas Natural Resources Code, that I am authorized to make this certification, that I have knowledge of the well data and information presented in this report, and that data and facts presented on both sides of this form Are true, correct, and complete, to the best of my knowledge. This certification covers all well data.

**JAMES C. MELEAR**

Typed or printed name of operator's representative

**REGULATORY MANAGER**

Title

  
Signature

**6500 WEST FREEWAY SUITE 800 FT. WORTH, TX 76116**

Address

City, State, Zip Code

**(817) 546-8482**

Tel.: Area Code Number

**04/09/2012**

Date: mo. day yr.

Instructions to Form W-15, Cementing Report

**IMPORTANT: Operators and cementing companies must comply with the requirements of the Commission's Statewide Rules 8 (Water Protection), 13 (Casing, Cementing, Drilling, and Completion), and 14 (Well Plugging). For offshore operations, see the requirements of Rule 13 (c).**

- A. What to file. An operator should file an original and one copy of the completed Form W-15 for each cementing company used on a well. The cementing of different casing strings on a well by one cementing company may be reported on one form. Form W-15 should be filed with the following.
- An initial oil or gas completion report, Form W-2 or G-1, as required by Statewide or special field rates;
  - Form W-4, Application for Multiple Completion, if the well is a multiple parallel casing completion; and
  - Form W-3, Plugging Record, unless the W-3 is signed by the cementing company representative. When reporting dry holes, operators must complete Form W-15, in addition to Form W-3, to show any casing cemented in the hole.
- B. Where to file. The appropriate Commission District Office for the county in which the well is located.
- C. Surface Casing. An operator must set and cement sufficient surface casing to protect all usable-quality water strata, as defined by the Texas Department of Water Resources, Austin. Before drilling a well in any field or area in which no field rules are in effect or in which surface casing requirements are not specified in the applicable rules, an operator must obtain a letter from the Department of Water Resources stating the protection depth. Surface casing should not be set deeper than 200 feet below the specified depth without prior approval from the Committee.
- D. Centralizers. Surface Casing must be centralized at the shoe, above and below a stage collar or diverting tool, if run, and through usable-quality water zones. In Non-deviated holes, a centralizer must be placed every fourth joint from the cement shoe to the ground surface or to the bottom of the cellar. All centralizers must meet API specifications.
- E. Exceptions and alternative casing programs. The District Director may grant an exception to the requirements of Statewide Rule 13. In a written application, an operator must state the reason for the requested exception and outline an alternate program for casing and cementing through the protection depth for strata containing usable-quality water. The District Director may approve, modify, or reject a proposed program. An operator must obtain approval of any exception before beginning casing and cementing operations.
- F. Intermediate and production casing. For specific technical requirements, operators should consult Statewide Rule 13 (3) and (4).
- G. Plugging and abandoning. Cement plugs must be placed in the wellbore as required by Statewide Rule 14. The District Director may require additional cement plugs. For onshore or inland wells, a 10-foot cement plug must be placed in the top of the well, and the casing must be cut off three foot below the ground surface. All cement plugs, except the top plug, must have sufficient slurry volume to fill 100 feet of hole, plus ten percent for each 1,000 feet of depth from the ground surface to the bottom of the plug.

To plug and abandon a well, operators must use only cements approved by the Director of Field Operations, Cementing companies, service companies or operators can qualify as approved cementers by demonstrating that they are able to mix and pump cement in compliance with Commission rules and regulations.

**RAILROAD COMMISSION OF TEXAS  
OIL AND GAS DIVISION**

Form W-12

(1-1-71)

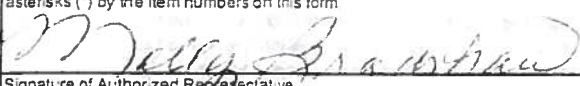
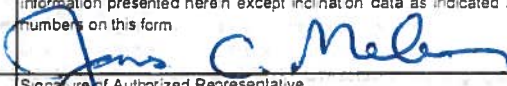
<b>INCLINATION REPORT</b> <small>(One Copy Must Be Filed With Each Completion Report)</small>		6 RRC District <b>7C</b>
		7. RRC Lease Number (Oil completions only)
1. FIELD NAME (as per RRC Records or Wildcat) <b>HOLT RANCH (CONSOLIDATED)</b>	2. LEASE NAME <b>UNIVERSITY 45'E</b>	8. Well Number <b>2004</b>
3. OPERATOR <b>APPROACH OPERATING, LLC</b>		9. RRC Identification Number (Gas completions only)
4. ADDRESS <b>ONE RIDGMAR CENTRE, 6500 W. FRWY., STE. 800, FT WORTH, TEXAS 76116</b>		10. County <b>CROCKETT</b>
5. LOCATION (Section, Block, and Survey) <b>SEC 20 BLK 45 UNIVERSITY LANDS</b>		

**RECORD OF INCLINATION**

*11. Measured Depth (feet)	12. Course Length (Hundreds of feet)	*13. Angle of Inclination (Degrees)	14. Displacement per Hundred Feet (Sine of Angle X100)	15. Course Displacement (feet)	16. Accumulative Displacement (feet)
500	500	1/2	0.87	4.36	4.36
1000	500	1 1/2	2.62	13.09	17.45
1500	500	1/2	0.87	4.36	21.82
2000	500	1/4	0.44	2.18	24.00
3000	1000	3/4	1.31	13.09	37.09
3500	500	3/4	1.31	6.54	43.63
4500	1000	1/2	0.87	8.73	52.36
5500	1000	3/4	1.31	13.09	65.45
6500	1000	1	1.75	17.45	82.90
7500	1000	1/2	0.87	8.73	91.63
	0		0.00	0.00	0.00
	0		0.00	0.00	0.00
	0		0.00	0.00	0.00
	0		0.00	0.00	0.00
	0		0.00	0.00	0.00
	0		0.00	0.00	0.00
	0		0.00	0.00	0.00

If additional space is needed, use the reverse side of this form.

17. Is any information shown on the reverse side of this form? ☐ yes ☒ no
18. Accumulative total displacement of well bore at total depth of 7500 feet = 91.63 feet.
- \*19. Inclination measurements were made in ☐ Tubing ☐ Casing ☐ Open Hole ☒ Drill Pipe
20. Distance from surface location of well to the nearest lease line 593 feet.
21. Minimum distance to lease line as prescribed by filed rules 330 feet.
22. Was the subject well at any time intentionally deviated from the vertical in any manner whatsoever? No
- (If the answer to the above question is "yes", attach written explanation of the circumstances.)

<b>INCLINATION DATA CERTIFICATION</b> I declare under penalties prescribed in Sec. 91.143, Texas Natural Resources Code, that I am authorized to make this certification, that I have personal knowledge of the inclination data and facts placed on both sides of this form and that such data and facts are true, correct and complete to the best of my knowledge. This certification covers all data as indicated by asterisks (*) by the item numbers on this form.	<b>OPERATOR CERTIFICATION</b> I declare under penalties prescribed in Sec. 91.143, Texas Natural Resources Code, that I am authorized to make this certification, that I have personal knowledge of all information presented in this report, and that all data presented on both sides of this form are true, correct and complete to the best of my knowledge. This certification covers all data and information presented herein except inclination data as indicated by asterisks (*) by the item numbers on this form.
 Signature of Authorized Representative	 Signature of Authorized Representative
<b>MOLLY BRADSHAW</b> Name of Person and Title (type or print)	<b>JAMES C. MELEAR REGULATORY MANAGER</b> Name of Person and Title (type or print)
<b>RINGO DRILLING I, L.P.</b> Name of Company	<b>APPROACH OPERATING LLC</b> Operator
Telephone <b>325-695-5600</b>	Telephone <b>(817) 546-8483</b>

*Railroad Commission Use Only*

Approved By: \_\_\_\_\_ Title: \_\_\_\_\_ Date: \_\_\_\_\_

\* Designates items certified by company that conducted the inclination surveys.

**RAILROAD COMMISSION OF TEXAS**  
**Oil and Gas Division**

**ELECTRIC LOG  
STATUS REPORT**

**FORM L-1**

Tracking No.: 42294

*This facsimile L-1 was generated electronically from data submitted to the RRC.*

**Instructions**

**When to File Form L-1:**

- with Forms G-1, W-2, and GT-1 for new and deepened gas, oil, and geothermal wells
- with Form W-3 for plugged dry holes
- when sending in a log which was held under a request for confidentiality and the period for confidentiality has not yet expired.

**When is Form L-1 NOT required:**

- with Forms W-2, G-1, and GT-1 filed for injection wells, disposal wells, water supply wells, service wells, re-test wells, re-classifications, and plugbacks of oil, gas or geothermal wells
- with Form W-3 for plugging of other than a dry hole

**Where to File Form L-1:**

- with the appropriate Commission district office

**Filling out Form L-1:**

- Section I and the signature section must be filled out for all wells
- complete only the appropriate part of Section II

**Type of log required:**

- any wireline survey run for the purpose of obtaining lithology, porosity, or resistivity information
- no more than one such log is required but it must be of the subject well
- if such log is NOT run on the subject well, do NOT substitute any other type of log; just select Section II, Part A below

**SECTION I. IDENTIFICATION**

Operator Name: <b>APPROACH OPERATING LLC</b>	District No. <b>7C</b>	Completion Date: <b>12/13/2011</b>
Field Name <b>HOLT RANCH (CONSOLIDATED)</b>	Drilling Permit No. <b>722459</b>	
Lease Name <b>UNIVERSITY "45 E"</b>	Lease/ID No.	Well No. <b>2004</b>
County <b>CROCKETT</b>	API No. <b>42- 105-41318</b>	

**SECTION II. LOG STATUS (Complete either A or B)**

☐ A. BASIC ELECTRIC LOG NOT RUN

☒ B. BASIC ELECTRIC LOG RUN. (Select one)

- ☒ 1. Confidentiality is requested and a copy of the header for each log that has been run on the well is attached.
- ☐ 2. Confidentiality already granted on basic electric log covering this interval (applicable to deepened wells only).
- ☐ 3. Basic electric log covering this interval already on file with Commission (applicable to deepened wells only).
- ☐ 4. Log attached to (select one):

☐ (a) Form L-1 (this form). If the company/lease name on log is different from that shown in Section I, please enter name on log here: \_\_\_\_\_

Check here if attached log is being submitted after being held confidential. ☐

☐ (b) Form P-7, Application for Discovery Allowable and New Field Designation.

☐ (c) Form W-4, Application for Multiple Completion:

Lease or ID No(s). \_\_\_\_\_

Well No(s). \_\_\_\_\_

James Melear

Signature

Name (print)

Regulatory Manager

Title

(817) 989-9000 EXT 2143

Phone

04/11/2012

Date

-FOR RAILROAD COMMISSION USE ONLY-

# HALLIBURTON

TRIPLE COMBO

COMPANY APPROACH OPERATING, LLC  WELL UNIVERSITY 45 E No. 2004  FIELD HOLT RANCH (CONSOLIDATED)  COUNTY CROCKETT  STATE TEXAS	COMPANY <b>APPROACH OPERATING, LLC</b>  WELL <b>UNIVERSITY 45 E No. 2004</b>  FIELD <b>HOLT RANCH (CONSOLIDATED)</b>  COUNTY <b>CROCKETT</b> STATE <b>TEXAS</b>	
	API No    42-105-413180000 Location   593' FSL & 734' FWL OF UNIVERSITY LANDS SURVEY 20 BLOCK 45  Other Servi NONE	
Permanent Datum                      GL                      Elev 2632 0 ft Log measured from                      KB                      14 4 ft above perm Datum Drilling measured from                KB		Elev K B D F G L
Date	06-Nov-11	
Run No	ONE	
Depth - Driller	8100 00 ft	
Depth - Logger	8090 0 ft	
Bottom - Logged Interval	8087 0 ft	
Top - Logged Interval	2050 0 ft	
Casing - Driller	8 625 in @ 2054 0 ft @	
Casing - Logger	2050 0 ft	
Bit Size	7 875 in @	
Type Fluid in Hole	BRINE	
Density	Viscosity	9 8 ppg    29 00 s/qt
PH	Fluid Loss	9 00 pH    11 0 cptm
Source of Sample	FLOWLINE	
Rm @ Meas Temperature	0 080 ohmm @ 76 00 degF @	
Rmf @ Meas Temperature	0 07 ohmm @ 76 00 degF @	
Rmc @ Meas Temperature	0 096 ohmm @ 76 00 degF @	
Source Rmf	Rmc	MEAS    MEAS
Rm @ BHT	0 04 ohmm @ 167 0 degF @	
Time Since Circulation	8 6 hr	
Time on Bottom	06-Nov-11 14 08	
Max Rec Temperature	167 0 degF @ 8090 0 ft @	
Equipment	Location	10549598    ODESSA, TX
Recorded By	VICTOR NWATU    RYAN PORUBENSKY	
Witnessed By	JOEL ROBLEDO    TED OLDHAM	

CERTIFICATE OF COMPLIANCE  
AND TRANSPORTATION AUTHORITY

P-4

Tracking No.: 42294

This facsimile P-4 was generated electronically from data submitted to the RRC.  
A certification of the automated data is available in the RRC's Austin office.

1. Field name exactly as shown on proration schedule <b>HOLT RANCH (CONSOLIDATED)</b>		2. Lease name as shown on proration schedule <b>UNIVERSITY "45 E"</b>					
3. Current operator name exactly as shown on P-5 Organization Report <b>APPROACH OPERATING LLC</b>		4. Operator P-5 no. <b>028625</b>	5. Oil Lse/Gas ID no.	6. County <b>CROCKETT</b>	7. RRC district <b>7C</b>		
8. Operator address including city, state, and zip code <b>ONE RIDGMAR CENTRE 6500 WEST FREEWAY SUITE 800 FORT WORTH, TX 76116</b>		9. Well no(s) (see instruction E) <b>2004</b>					
		10. Classification <input checked="" type="checkbox"/> Oil <input type="checkbox"/> Gas <input type="checkbox"/> Other (see instruction A)			11. Effective Date <b>12/13/2011</b>		
12. Purpose of Filing. (Complete section a or b below.) (See instructions B and G) a. Change of: <input type="checkbox"/> operator <input type="checkbox"/> oil or condensate gatherer <input type="checkbox"/> gas gatherer <input type="checkbox"/> gas purchaser <input type="checkbox"/> gas purchaser system code <input type="checkbox"/> field name from _____ <input type="checkbox"/> lease name from _____ -- OR -- b. New RRC Number for: <input checked="" type="checkbox"/> oil lease <input type="checkbox"/> gas well <input type="checkbox"/> other well (specify) _____ Due to: <input checked="" type="checkbox"/> new completion or recompletion <input type="checkbox"/> reclass oil to gas <input type="checkbox"/> reclass gas to oil <input type="checkbox"/> consolidation, unitization, or subdivision (oil lease only)							
13. Authorized GAS WELL GAS or CASINGHEAD GAS Gatherer(s) and/or Purchaser(s). (See instruction G).							
Gatherer	Purchaser	Name of GAS WELL GAS or CASINGHEAD GAS Gatherer(s) or Purchaser(s) As Indicated in Columns to the Left (Attach an additional sheet in same format if more space is needed)			Purchaser's RRC Assigned System Code	Percent of Take	Full-well stream
X	X	WTG GAS PROCESSING, L.P.(945227)			0006	100.0	
14. Authorized OIL or CONDENSATE Gatherer(s). (See instruction G).							
Name of OIL or CONDENSATE Gatherer(s) - List Highest Volume Gatherer First (Attach an additional sheet in same format if more space is needed)						Percent of Take	
BML, INC. B(077542)						30.0	
APPROACH SERVICES, LLC(028627)						30.0	
EASTEX CRUDE COMPANY(239232)						20.0	
SHELL TRADING (US) COMPANY(774715)						20.0	
RRC USE ONLY: Reviewer's initials: _____ Approval date: _____							
15. PREVIOUS OPERATOR CERTIFICATION FOR CHANGE OF OPERATOR P-4 FILING. Being the PREVIOUS OPERATOR, I certify that operating responsibility for the well(s) designated in this filing, located on the subject lease has been transferred in its entirety to the above named Current Operator. I understand, as Previous Operator, that designation of the above named operator as Current Operator is not effective until this certificate is approved by the Commission.							
Name of Previous Operator _____ Name (print) _____ Title _____				Signature _____ <input type="checkbox"/> Authorized Employee of previous operator <input type="checkbox"/> Authorized agent of previous operator (see instruction G) _____ Date _____ Phone with area code _____			
16. CURRENT OPERATOR CERTIFICATION. By signing this certificate as the Current Operator, I certify that all statements on this form are true and correct and I acknowledge responsibility for the regulatory compliance of the subject lease including plugging of well(s) pursuant to Rule 14. I further acknowledge that I assume responsibility for the physical operation, control, and proper plugging of each well designated in this filing. I also acknowledge that I will remain designated as the Current Operator until a new certificate designating a new Current Operator is approved by the Commission.							
Name (print) <b>Regulatory Manager</b> Title <b>jmelear@approachresources.com</b> E-mail Address (optional)				James Melear Signature _____ <input type="checkbox"/> Authorized Employee of current operator <input type="checkbox"/> Authorized agent of current operator (see instruction G) <b>04/11/2012</b> Date _____ Phone with area code _____ <b>(817) 989-9000 EXT 2143</b>			

STATEMENT OF PRODUCTIVITY OF ACREAGE  
ASSIGNED TO PRORATION UNITS

Form P-15

Tracking No.: 42294

This facsimile P-15 was generated electronically  
from data submitted to the RRC.

The undersigned states that he is authorized to make this statement; that he has knowledge of the facts concerning the APPROACH OPERATING LLC ,

UNIVERSITY "45 E" , No. 2004 ; that such well is  
LEASE OPERATOR WELL

completed in the HOLT RANCH (CONSOLIDATED) Field, CROCKETT County,

Texas and that the acreage claimed, and assigned to such well for proration purposes as authorized by special rule and as shown on the attached certified plat embraces \_\_\_\_\_

93.0 acres which can reasonably be considered to be productive of hydrocarbons.

- CERTIFICATE -

*I declare under penalties prescribed in Sec. 91.143, Texas Natural Resources Code, that I am authorized to make this report, that this report was prepared by me or under my supervision and direction, and that data and facts stated therein are true, correct, and complete, to the best of my knowledge,*

Date 04/11/2012 Signature James Melear

Telephone (817) 989-9000 EXT 2143 Title Regulatory Manager  
AREA CODE

Groundwater  
Advisory Unit

GROUNDWATER PROTECTION DETERMINATION

Date August 26, 2011

GAU File No.: SC- 14511

API Number 10500000

Attention: LAURA GILMORE

RRC Lease No. 000000

SC\_028625\_10500000\_000000\_14511.pdf

APPROACH OPERATING LLC  
6500 WEST FRWY  
STE 800  
FORT WORTH TX 76116

--Measured--

734 ft FWL

593 ft FSL

MRL: SURVEY

P-5# 028625

Digital Map Location:

X-coord/Long 1719676

Y-coord/Lat 464678

Datum 27 Zone C

County CROCKETT

Lease & Well No. UNIVERSITY-45E- #2004

Purpose ND

Location SUR-UL, BLK-45, SEC-20, -- [TD=9000], [RRC 7C],

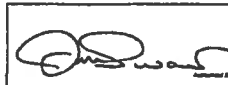
To protect usable-quality groundwater at this location, the Groundwater Advisory Unit of the Texas Railroad Commission recommends:

The interval from the land surface to 20 feet below the base of Cretaceous-age beds must be protected. The base of the Cretaceous is estimated to occur at a depth of 775 feet.

Note: Unless stated otherwise, this recommendation is intended to apply only to the subject well and not for area-wide use. This recommendation is intended for normal drilling, production, and plugging operations only. It does not apply to saltwater disposal operation into a nonproductive zone (RRC Form W-14).

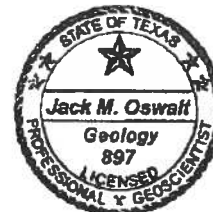
If you have any questions, please contact us at 512-463-2741, [gau@rrc.state.tx.us](mailto:gau@rrc.state.tx.us), or by mail.

Sincerely,

  
Digitally signed by Jack Oswalt  
DN: c=US, st=Texas, In=Austin, ou=Surface  
Casing, o=Texas Commission on  
Environmental Quality, cn=Jack Oswalt,  
email=joswalt@tceq.state.tx.us  
Date: 2011.08.26 14:24:16 -0500

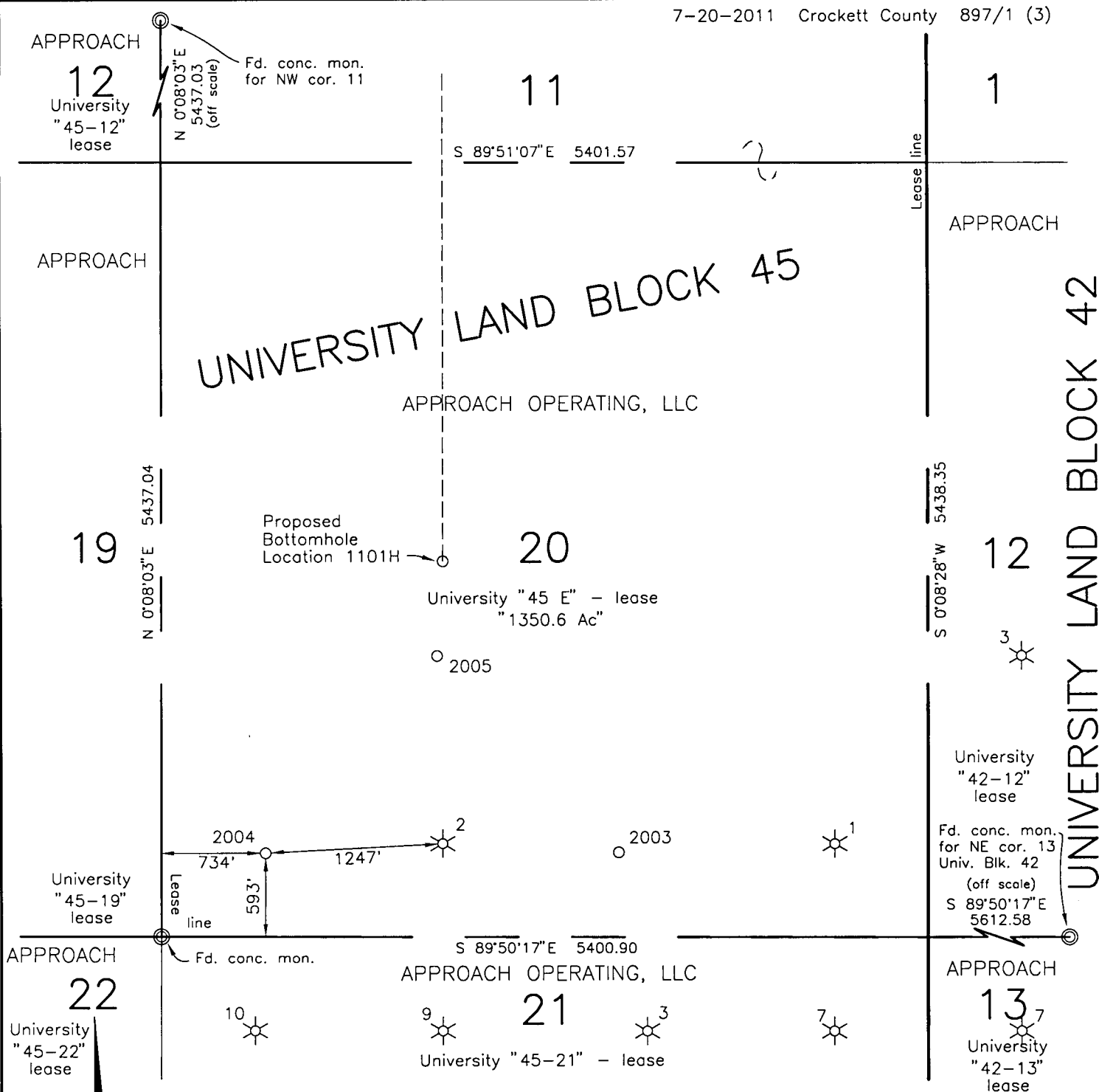
Jack M. Oswalt, P.G.

GEOLOGIST SEAL



Geologist, Groundwater Advisory Unit  
Oil & Gas Division

The seal appearing on this document was authorized by Jack M. Oswalt on 8/26/2011.  
Note: Alteration of this electronic document will invalidate the digital signature.



" Ac" = Acreage claimed by operator to be in lease.

Located: N 5°W 16 miles from Ozona, Texas.

0 1000 2000



SCALE: 1" = 1000'

#### LOCATION

Y = 464,678 ft.  
X = 1,719,674 ft.  
Latitude : 30.9413° N.  
Longitude : 101.2275° W.

FIELD :  
COUNTY : Crockett  
OPERATOR : Approach Operating, LLC  
LEASE : University "45 E"  
WELL NO. : 2004  
ELEVATION : 2632 ft. grd.  
LOCATION : 593 ft. FSL and 734 ft. FWL of University Land Survey 20, Block 45, Crockett County, Texas.

#### NOTES

Courses, distances and coordinates shown hereon are of the Texas Coordinate System of 1927 - Central Zone.

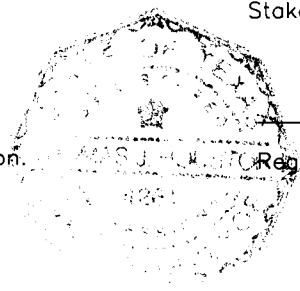
The survey construction shown hereon is sufficient for staking this location and no other purpose.

The lease information shown hereon is based on information provided by operator or its representatives and was relied upon by surveyor for the purpose of staking this location. Said surveyor was not requested to verify lease and accepts no responsibility for the accuracy or status of this information.

Position of surveys shown hereon is based on Frank Friends survey of University Lands Blocks 38 to 57 dated July 24, 1937 on file in the General Land Office.

The above sketch represents the location as staked on the ground and is for permit purposes only.

Staked the 28th day of April, 2011.



*Thomas J. Houston*  
Thomas J. Houston  
Registered Professional Land Surveyor No. 4261

OFFICE OF  
**WILSON LAND SURVEYING, INC.**

1514 W. BEAUREGARD AVE.  
P. O. BOX 3326 PH. 325-653-3916  
SAN ANGELO, TEXAS 76902

COPYRIGHTED  
AP4U4520.DWG