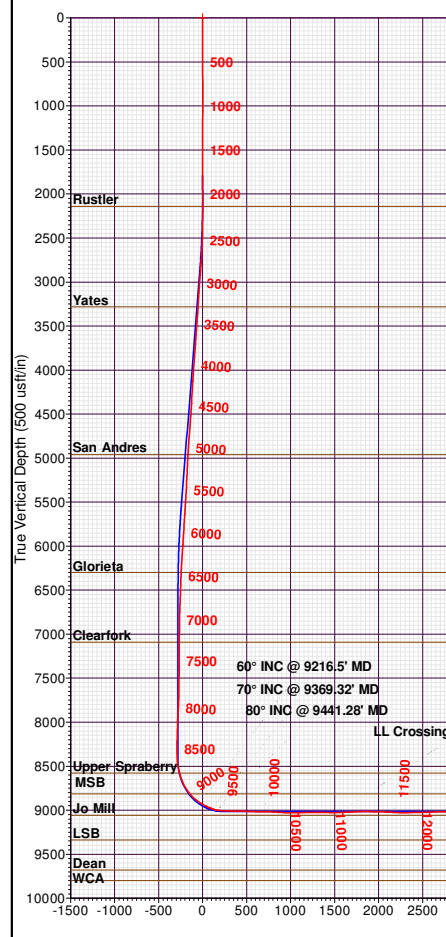


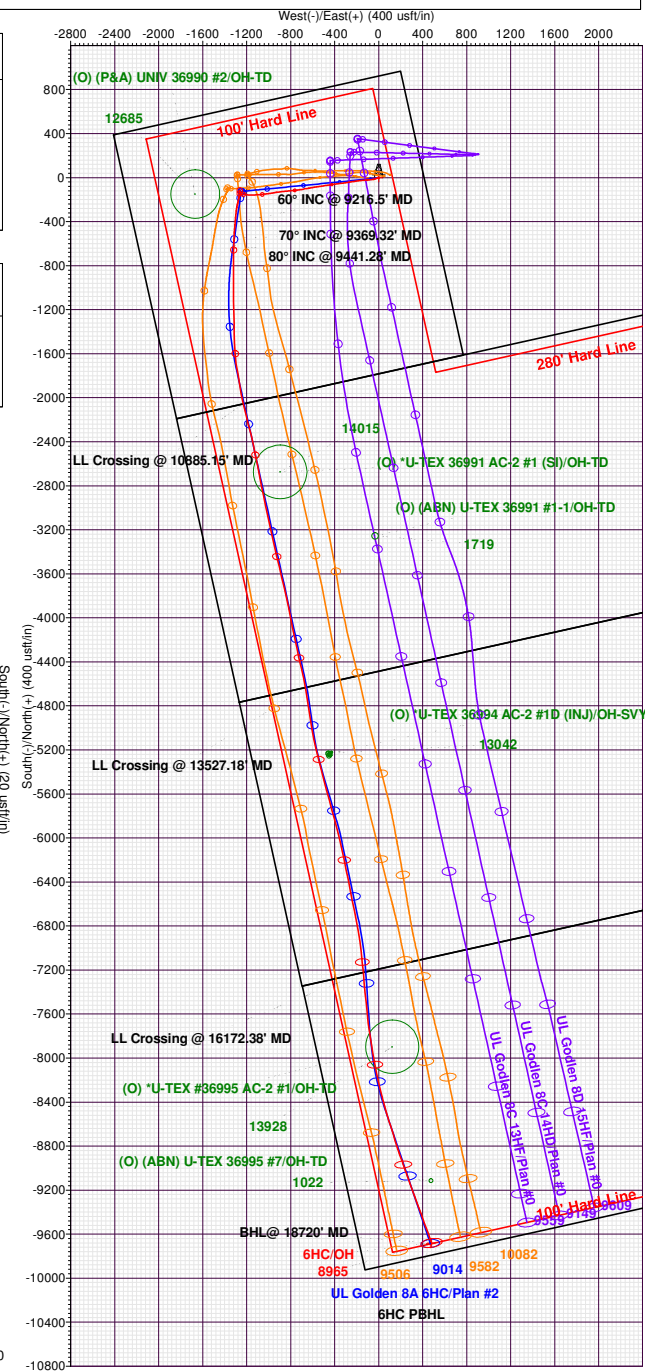
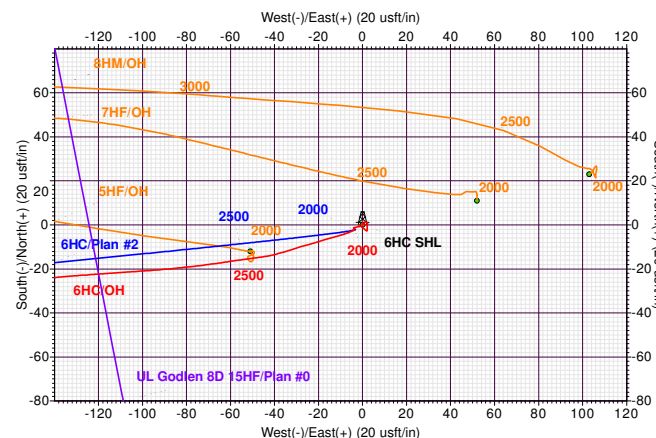
TOTAL CORRECTION: 8.31°

ANNOTATIONS								
MD	Inc	Azi	TVD	+N/-S	+E/-W	VSec Departure	Annotation	
9216.50	60.00	184.71	8917.14	-410.36	-1305.37	-27.68	1622.52	60° INC @ 9216.5' MD
9369.32	70.00	182.26	8980.73	-548.77	-1314.88	100.46	1761.08	70° INC @ 9369.32' MD
9441.28	80.00	181.89	9000.22	-617.89	-1317.15	165.25	1830.59	80° INC @ 9441.28' MD
10885.15	92.57	166.83	9026.05	-2054.56	-1231.25	1554.20	3273.13	LL Crossing @ 10885.15' MD
13527.18	88.73	170.24	9016.92	-4634.37	-666.32	4179.41	5914.47	LL Crossing @ 13527.18' MD
16172.38	91.80	174.70	8984.65	-7222.67	-140.13	6800.30	8558.83	LL Crossing @ 16172.38' MD
18720.00	92.23	160.18	8964.67	-9680.48	480.55	9327.67	11105.67	BHL@ 18720' MD

DESIGN TARGET DETAILS							
Name	TVD	+N/-S	+E/-W	Northing	Easting	Latitude	Longitude
6HC SHL	0.00	0.00	0.00	296661.00	500722.00	32.386793	-102.358547
6HC BHL	8964.67	-9680.48	480.55	286990.52	501202.55	32.360273	-102.355543
6HC PBHL	9014.00	-9685.25	468.46	286975.75	501190.46	32.360258	-102.355582



FORMATION TOP DETAILS		
TVDPath	MDPath	Formation
2142.00	2142.25	Rustler
3281.00	3324.78	Yates
4959.00	5113.33	San Andres
6299.00	6490.46	Glorieta
7090.00	7283.39	Clearfork
8576.00	8772.80	Upper Spraberry
8814.00	9048.75	MSB



Ovintiv USA Inc.

Andrews County, TX (TNC NAD 27)

UL Golden West Pad

UL Golden 8A 6HC

API:

OH

Design: OH

Standard Survey Report

01 July, 2024

SDT
Survey Report

Company:	Ovintiv USA Inc.	Local Co-ordinate Reference:	Well UL Golden 8A 6HC
Project:	Andrews County, TX (TNC NAD 27)	TVD Reference:	3028.6+25 @ 3053.60usft (H&P 379)
Site:	UL Golden West Pad	MD Reference:	3028.6+25 @ 3053.60usft (H&P 379)
Well:	UL Golden 8A 6HC	North Reference:	Grid
Wellbore:	OH	Survey Calculation Method:	Minimum Curvature
Design:	OH	Database:	EDM 5000 Multi User Db

Project	Andrews County, TX (TNC NAD 27)		
Map System:	US State Plane 1927 (Exact solution)	System Datum:	Mean Sea Level
Geo Datum:	NAD 1927 (NADCON CONUS)		
Map Zone:	Texas North Central 4202		

Site		UL Golden West Pad			
Site Position:		Northing:	296,649.00 usft	Latitude:	32.386754
From:	Map	Easting:	500,671.00 usft	Longitude:	-102.358711
Position Uncertainty:		0.00 usft	Slot Radius:	13-3/16 "	

Well		UL Golden 8A 6HC				
Well Position	+N/-S	0.00 usft	Northing:	296,661.00 usft	Latitude:	32.386793
	+E/-W	0.00 usft	Easting:	500,722.00 usft	Longitude:	-102.358547
Position Uncertainty		0.00 usft	Wellhead Elevation:	usft	Ground Level:	3,028.60 usft
Grid Convergence:	-2.65 °					

Wellbore	OH				
Magnetics	Model Name	Sample Date	Declination	Dip Angle	Field Strength
			(°)	(°)	(nT)
	HRGM	5/1/2024	5.66	59.93	47,202.47212855

Design	OH				
Audit Notes:					
Version:	1.0	Phase:	ACTUAL	Tie On Depth:	0.00
Vertical Section:	Depth From (TVD)	+N/-S	+E/-W	Direction	
	(usft)	(usft)	(usft)	(°)	
	0.00	0.00	0.00	161.39	

Survey Program	Date	7/1/2024			
From	To	Survey (Wellbore)	Tool Name	Description	
(usft)	(usft)				
109.00	1,791.00	Survey #1 (OH)	MWD+IFR1+MS	OWSG MWD + IFR1 + Multi-Station Correction	
1,894.00	18,658.00	Survey #2 (OH)	MWD+IFR1+MS	OWSG MWD + IFR1 + Multi-Station Correction	
18,720.00	18,720.00	Survey #3 (OH)	A026Ua_BLIND	OWSG BLIND	

Survey										
Measured	Inclination	Azimuth	Vertical	+N/-S	+E/-W	Vertical	Dogleg	Build	Turn	
Depth	(°)	(°)	Depth	(usft)	(usft)	Section	Rate	Rate	Rate	
(usft)			(usft)			(usft)	(°/100usft)	(°/100usft)	(°/100usft)	
0.00	0.00	0.00	0.00	0.00	0.00	0.00	0.00	0.00	0.00	
109.00	0.05	322.11	109.00	0.04	-0.03	-0.04	0.05	0.05	0.00	
196.00	0.01	32.01	196.00	0.07	-0.05	-0.09	0.05	-0.05	80.34	
298.00	0.40	36.90	298.00	0.37	0.17	-0.29	0.38	0.38	4.79	
385.00	0.75	50.58	384.99	0.97	0.79	-0.67	0.43	0.40	15.72	
471.00	0.57	88.88	470.99	1.34	1.65	-0.74	0.54	-0.21	44.53	
558.00	0.53	162.22	557.99	0.96	2.21	-0.21	0.76	-0.05	84.30	
644.00	0.70	187.62	643.98	0.06	2.26	0.66	0.37	0.20	29.53	

SDT

Survey Report

Company:	Ovintiv USA Inc.	Local Co-ordinate Reference:	Well UL Golden 8A 6HC
Project:	Andrews County, TX (TNC NAD 27)	TVD Reference:	3028.6+25 @ 3053.60usft (H&P 379)
Site:	UL Golden West Pad	MD Reference:	3028.6+25 @ 3053.60usft (H&P 379)
Well:	UL Golden 8A 6HC	North Reference:	Grid
Wellbore:	OH	Survey Calculation Method:	Minimum Curvature
Design:	OH	Database:	EDM 5000 Multi User Db

Survey									
Measured Depth (usft)	Inclination (°)	Azimuth (°)	Vertical Depth (usft)	+N/-S (usft)	+E/-W (usft)	Vertical Section (usft)	Dogleg Rate (°/100usft)	Build Rate (°/100usft)	Turn Rate (°/100usft)
730.00	0.60	183.48	729.98	-0.91	2.17	1.55	0.13	-0.12	-4.81
817.00	0.81	178.74	816.97	-1.98	2.15	2.56	0.25	0.24	-5.45
903.00	0.37	240.97	902.97	-2.72	1.92	3.19	0.83	-0.51	72.36
991.00	0.88	318.50	990.96	-2.35	1.23	2.62	1.00	0.58	88.10
1,077.00	0.76	312.98	1,076.95	-1.47	0.37	1.51	0.17	-0.14	-6.42
1,163.00	0.58	314.51	1,162.95	-0.77	-0.36	0.62	0.21	-0.21	1.78
1,251.00	0.15	229.95	1,250.94	-0.54	-0.76	0.26	0.66	-0.49	-96.09
1,337.00	0.64	259.72	1,336.94	-0.69	-1.32	0.24	0.60	0.57	34.62
1,424.00	0.69	259.88	1,423.94	-0.87	-2.32	0.09	0.06	0.06	0.18
1,511.00	0.73	253.26	1,510.93	-1.12	-3.36	-0.01	0.10	0.05	-7.61
1,598.00	0.21	247.40	1,597.93	-1.35	-4.04	-0.01	0.60	-0.60	-6.74
1,685.00	0.05	151.27	1,684.93	-1.44	-4.17	0.03	0.25	-0.18	-110.49
1,791.00	0.30	124.61	1,790.93	-1.64	-3.92	0.30	0.24	0.24	-25.15
1,894.00	0.15	147.49	1,893.92	-1.91	-3.62	0.65	0.17	-0.15	22.21
1,988.00	0.08	129.76	1,987.92	-2.05	-3.51	0.82	0.08	-0.07	-18.86
2,083.00	2.54	243.65	2,082.89	-3.03	-5.34	1.16	2.71	2.59	119.88
2,142.25	5.39	252.54	2,142.00	-4.45	-9.18	1.29	4.91	4.82	15.01
Rustler									
2,177.00	7.09	254.41	2,176.54	-5.51	-12.80	1.14	4.91	4.88	5.37
2,271.00	7.45	253.64	2,269.78	-8.79	-24.24	0.59	0.40	0.38	-0.82
2,366.00	7.20	252.53	2,364.01	-12.31	-35.82	0.23	0.30	-0.26	-1.17
2,460.00	8.46	262.79	2,457.13	-14.95	-48.30	-1.25	2.00	1.34	10.91
2,554.00	10.78	261.42	2,549.81	-17.13	-63.86	-4.15	2.48	2.47	-1.46
2,648.00	13.23	264.20	2,641.74	-19.53	-83.26	-8.06	2.68	2.61	2.96
2,742.00	14.86	266.39	2,732.93	-21.37	-105.99	-13.57	1.82	1.73	2.33
2,837.00	17.30	265.44	2,824.21	-23.26	-132.23	-20.15	2.58	2.57	-1.00
2,931.00	20.49	263.54	2,913.13	-26.22	-162.52	-27.01	3.46	3.39	-2.02
3,025.00	22.50	262.49	3,000.59	-30.43	-196.70	-33.94	2.18	2.14	-1.12
3,120.00	20.93	261.77	3,088.85	-35.23	-231.52	-40.49	1.68	-1.65	-0.76
3,214.00	20.12	260.38	3,176.88	-40.34	-264.08	-46.05	1.01	-0.86	-1.48
3,308.00	19.84	261.46	3,265.22	-45.41	-295.79	-51.36	0.49	-0.30	1.15
3,324.78	19.90	261.65	3,281.00	-46.25	-301.43	-52.37	0.53	0.36	1.13
Yates									
3,402.00	20.18	262.51	3,353.55	-49.89	-327.64	-57.28	0.53	0.36	1.11
3,496.00	20.59	262.54	3,441.66	-54.15	-360.11	-63.60	0.44	0.44	0.03
3,591.00	20.62	261.95	3,530.58	-58.66	-393.23	-69.90	0.22	0.03	-0.62
3,685.00	21.11	261.73	3,618.42	-63.41	-426.37	-75.97	0.53	0.52	-0.23
3,779.00	21.98	261.92	3,705.85	-68.32	-460.54	-82.22	0.93	0.93	0.20
3,873.00	21.99	261.17	3,793.01	-73.50	-495.35	-88.43	0.30	0.01	-0.80
3,968.00	22.62	261.61	3,880.91	-78.89	-531.00	-94.69	0.69	0.66	0.46
4,062.00	23.56	262.07	3,967.37	-84.12	-567.49	-101.38	1.02	1.00	0.49
4,156.00	23.50	258.97	4,053.56	-90.30	-604.49	-107.33	1.32	-0.06	-3.30
4,251.00	19.61	260.99	4,141.90	-96.42	-638.84	-112.49	4.17	-4.09	2.13
4,345.00	19.69	260.51	4,230.43	-101.50	-670.04	-117.63	0.19	0.09	-0.51

SDT

Survey Report

Company:	Ovintiv USA Inc.	Local Co-ordinate Reference:	Well UL Golden 8A 6HC
Project:	Andrews County, TX (TNC NAD 27)	TVD Reference:	3028.6+25 @ 3053.60usft (H&P 379)
Site:	UL Golden West Pad	MD Reference:	3028.6+25 @ 3053.60usft (H&P 379)
Well:	UL Golden 8A 6HC	North Reference:	Grid
Wellbore:	OH	Survey Calculation Method:	Minimum Curvature
Design:	OH	Database:	EDM 5000 Multi User Db

Survey									
Measured Depth (usft)	Inclination (°)	Azimuth (°)	Vertical Depth (usft)	+N/-S (usft)	+E/-W (usft)	Vertical Section (usft)	Dogleg Rate (°/100usft)	Build Rate (°/100usft)	Turn Rate (°/100usft)
4,440.00	19.79	260.03	4,319.85	-106.93	-701.67	-122.58	0.20	0.11	-0.51
4,535.00	19.25	261.60	4,409.39	-112.00	-733.00	-127.78	0.79	-0.57	1.65
4,629.00	17.87	264.45	4,498.50	-115.66	-762.68	-133.78	1.76	-1.47	3.03
4,724.00	18.11	264.28	4,588.85	-118.54	-791.88	-140.37	0.26	0.25	-0.18
4,818.00	18.24	264.98	4,678.16	-121.28	-821.07	-147.09	0.27	0.14	0.74
4,912.00	18.17	263.93	4,767.46	-124.12	-850.30	-153.72	0.36	-0.07	-1.12
5,100.00	17.75	262.78	4,946.30	-130.82	-907.88	-165.75	0.29	-0.22	-0.61
5,113.33	17.42	262.66	4,959.00	-131.33	-911.87	-166.54	2.51	-2.50	-0.92
San Andres									
5,195.00	15.38	261.79	5,037.35	-134.44	-934.72	-170.88	2.51	-2.49	-1.06
5,289.00	14.34	260.34	5,128.20	-138.17	-958.53	-174.94	1.17	-1.11	-1.54
5,384.00	14.79	261.15	5,220.15	-142.01	-982.11	-178.83	0.52	0.47	0.85
5,478.00	15.39	261.81	5,310.91	-145.64	-1,006.32	-183.12	0.66	0.64	0.70
5,572.00	16.05	262.99	5,401.39	-149.00	-1,031.56	-187.99	0.78	0.70	1.26
5,667.00	16.79	263.76	5,492.52	-152.09	-1,058.23	-193.57	0.81	0.78	0.81
5,761.00	16.08	264.88	5,582.68	-154.73	-1,084.70	-199.51	0.83	-0.76	1.19
5,855.00	13.07	267.30	5,673.64	-156.39	-1,108.28	-205.47	3.27	-3.20	2.57
5,949.00	12.67	267.17	5,765.28	-157.40	-1,129.20	-211.18	0.43	-0.43	-0.14
6,043.00	12.33	267.15	5,857.05	-158.41	-1,149.52	-216.71	0.36	-0.36	-0.02
6,138.00	11.24	270.01	5,950.05	-158.91	-1,168.91	-222.42	1.30	-1.15	3.01
6,232.00	7.82	279.47	6,042.74	-157.86	-1,184.38	-228.36	3.99	-3.64	10.06
6,326.00	7.58	279.67	6,135.89	-155.77	-1,196.80	-234.31	0.26	-0.26	0.21
6,421.00	7.58	281.96	6,230.06	-153.41	-1,209.11	-240.46	0.32	0.00	2.41
6,490.46	6.48	275.47	6,299.00	-152.09	-1,217.49	-244.39	1.96	-1.59	-9.35
Glorieta									
6,515.00	6.11	272.63	6,323.40	-151.90	-1,220.17	-245.43	1.96	-1.49	-11.56
6,609.00	5.79	269.34	6,416.89	-151.72	-1,229.91	-248.70	0.50	-0.34	-3.50
6,703.00	5.56	273.43	6,510.43	-151.51	-1,239.20	-251.87	0.49	-0.24	4.35
6,797.00	5.11	277.83	6,604.02	-150.66	-1,247.89	-255.45	0.65	-0.48	4.68
6,891.00	2.84	292.89	6,697.79	-149.19	-1,254.18	-258.85	2.64	-2.41	16.02
6,985.00	1.65	287.68	6,791.72	-147.87	-1,257.62	-261.20	1.28	-1.27	-5.54
7,079.00	1.63	297.34	6,885.68	-146.85	-1,260.10	-262.96	0.29	-0.02	10.28
7,173.00	1.59	295.87	6,979.64	-145.66	-1,262.46	-264.83	0.06	-0.04	-1.56
7,268.00	1.03	288.61	7,074.62	-144.82	-1,264.45	-266.27	0.61	-0.59	-7.64
7,283.39	1.00	286.76	7,090.00	-144.73	-1,264.71	-266.44	0.31	-0.22	-12.05
Clearfork									
7,363.00	0.84	274.91	7,169.60	-144.48	-1,265.95	-267.07	0.31	-0.20	-14.88
7,445.00	0.49	245.34	7,251.60	-144.58	-1,266.87	-267.27	0.58	-0.43	-36.06
7,601.00	0.57	54.79	7,407.60	-144.41	-1,266.84	-267.42	0.68	0.05	108.62
7,695.00	2.04	43.69	7,501.57	-142.93	-1,265.31	-268.33	1.58	1.56	-11.81
7,789.00	1.45	50.52	7,595.53	-140.96	-1,263.23	-269.54	0.66	-0.63	7.27
7,883.00	1.16	41.63	7,689.50	-139.50	-1,261.68	-270.43	0.38	-0.31	-9.46
7,976.00	3.19	357.49	7,782.43	-136.21	-1,261.17	-273.39	2.68	2.18	-47.46

SDT

Survey Report

Company:	Ovintiv USA Inc.	Local Co-ordinate Reference:	Well UL Golden 8A 6HC
Project:	Andrews County, TX (TNC NAD 27)	TVD Reference:	3028.6+25 @ 3053.60usft (H&P 379)
Site:	UL Golden West Pad	MD Reference:	3028.6+25 @ 3053.60usft (H&P 379)
Well:	UL Golden 8A 6HC	North Reference:	Grid
Wellbore:	OH	Survey Calculation Method:	Minimum Curvature
Design:	OH	Database:	EDM 5000 Multi User Db

Survey										
Measured Depth (usft)	Inclination (°)	Azimuth (°)	Vertical Depth (usft)	+N/-S (usft)	+E/-W (usft)	Vertical Section (usft)	Dogleg Rate (°/100usft)	Build Rate (°/100usft)	Turn Rate (°/100usft)	
8,070.00	3.49	352.00	7,876.28	-130.76	-1,261.68	-278.71	0.47	0.32	-5.84	
8,165.00	2.24	351.31	7,971.15	-126.06	-1,262.37	-283.38	1.32	-1.32	-0.73	
8,259.00	1.54	351.19	8,065.10	-123.00	-1,262.84	-286.44	0.74	-0.74	-0.13	
8,353.00	1.69	1.40	8,159.07	-120.36	-1,263.00	-288.98	0.34	0.16	10.86	
8,447.00	1.10	329.53	8,253.04	-118.20	-1,263.42	-291.17	1.01	-0.63	-33.90	
8,541.00	0.46	295.62	8,347.03	-117.26	-1,264.22	-292.31	0.81	-0.68	-36.07	
8,635.00	6.00	164.37	8,440.87	-121.83	-1,263.23	-287.67	6.72	5.89	-139.63	
8,730.00	12.71	182.24	8,534.57	-137.08	-1,262.30	-272.92	7.61	7.06	18.81	
8,772.80	16.29	188.63	8,576.00	-147.72	-1,263.39	-263.18	9.15	8.36	14.93	
Upper Spraberry										
8,823.00	20.64	193.30	8,623.61	-163.30	-1,266.48	-249.40	9.15	8.67	9.31	
8,917.00	31.31	192.74	8,707.99	-203.36	-1,275.71	-214.38	11.35	11.35	-0.60	
9,011.00	38.08	191.55	8,785.23	-255.65	-1,286.91	-168.41	7.24	7.20	-1.27	
9,048.75	42.59	189.24	8,814.00	-279.67	-1,291.29	-147.03	12.58	11.95	-6.12	
MSB										
9,105.00	49.38	186.45	8,853.07	-319.72	-1,296.76	-110.82	12.58	12.07	-4.96	
9,199.00	58.68	184.78	8,908.22	-395.35	-1,304.13	-41.50	10.00	9.89	-1.78	
9,216.50	60.00	184.71	8,917.14	-410.36	-1,305.37	-27.68	7.55	7.54	-0.40	
60° INC @ 9216.5' MD										
9,293.00	65.77	184.42	8,952.00	-478.20	-1,310.78	34.90	7.55	7.54	-0.38	
9,369.32	70.00	182.26	8,980.73	-548.77	-1,314.88	100.46	6.13	5.54	-2.83	
70° INC @ 9369.32' MD										
9,387.00	70.98	181.78	8,986.63	-565.42	-1,315.47	116.06	6.13	5.56	-2.73	
9,441.28	80.00	181.89	9,000.22	-617.89	-1,317.15	165.25	16.62	16.62	0.20	
80° INC @ 9441.28' MD										
9,481.00	86.60	181.96	9,004.85	-657.29	-1,318.47	202.17	16.62	16.62	0.19	
9,575.00	89.79	180.93	9,007.81	-751.20	-1,320.84	290.41	3.57	3.39	-1.10	
9,669.00	88.33	179.68	9,009.35	-845.19	-1,321.34	379.32	2.04	-1.55	-1.33	
9,763.00	88.64	179.46	9,011.84	-939.15	-1,320.64	468.60	0.40	0.33	-0.23	
9,857.00	88.17	179.28	9,014.45	-1,033.11	-1,319.60	557.97	0.54	-0.50	-0.19	
9,951.00	89.06	179.35	9,016.73	-1,127.07	-1,318.48	647.38	0.95	0.95	0.07	
10,046.00	88.59	178.74	9,018.67	-1,222.04	-1,316.90	737.89	0.81	-0.49	-0.64	
10,140.00	87.60	178.91	9,021.80	-1,315.97	-1,314.97	827.52	1.07	-1.05	0.18	
10,235.00	86.88	179.37	9,026.37	-1,410.84	-1,313.55	917.89	0.90	-0.76	0.48	
10,329.00	90.52	176.10	9,028.51	-1,504.72	-1,309.83	1,008.04	5.20	3.87	-3.48	
10,423.00	91.27	176.69	9,027.04	-1,598.52	-1,303.92	1,098.82	1.02	0.80	0.63	
10,517.00	90.18	172.28	9,025.85	-1,692.05	-1,294.89	1,190.35	4.83	-1.16	-4.69	
10,610.00	90.04	170.00	9,025.67	-1,783.94	-1,280.57	1,282.00	2.46	-0.15	-2.45	
10,704.00	89.76	170.55	9,025.83	-1,876.59	-1,264.69	1,374.87	0.66	-0.30	0.59	
10,798.00	88.75	169.96	9,027.06	-1,969.22	-1,248.78	1,467.74	1.24	-1.07	-0.63	
10,885.15	92.57	166.83	9,026.05	-2,054.56	-1,231.25	1,554.20	5.67	4.38	-3.60	
LL Crossing @ 10885.15' MD										
10,892.00	92.87	166.58	9,025.73	-2,061.21	-1,229.68	1,561.02	5.67	4.38	-3.60	
10,986.00	93.46	166.03	9,020.54	-2,152.40	-1,207.46	1,654.53	0.86	0.63	-0.59	
11,080.00	91.44	165.71	9,016.52	-2,243.47	-1,184.53	1,748.15	2.18	-2.15	-0.34	

SDT Survey Report

Company:	Ovintiv USA Inc.	Local Co-ordinate Reference:	Well UL Golden 8A 6HC
Project:	Andrews County, TX (TNC NAD 27)	TVD Reference:	3028.6+25 @ 3053.60usft (H&P 379)
Site:	UL Golden West Pad	MD Reference:	3028.6+25 @ 3053.60usft (H&P 379)
Well:	UL Golden 8A 6HC	North Reference:	Grid
Wellbore:	OH	Survey Calculation Method:	Minimum Curvature
Design:	OH	Database:	EDM 5000 Multi User Db

Survey									
Measured Depth (usft)	Inclination (°)	Azimuth (°)	Vertical Depth (usft)	+N/-S (usft)	+E/-W (usft)	Vertical Section (usft)	Dogleg Rate (°/100usft)	Build Rate (°/100usft)	Turn Rate (°/100usft)
11,174.00	90.27	165.56	9,015.12	-2,334.52	-1,161.22	1,841.88	1.25	-1.24	-0.16
11,269.00	88.50	168.05	9,016.14	-2,426.99	-1,139.53	1,936.44	3.22	-1.86	2.62
11,364.00	88.36	168.57	9,018.74	-2,519.99	-1,120.29	2,030.71	0.57	-0.15	0.55
11,458.00	87.77	169.10	9,021.91	-2,612.16	-1,102.10	2,123.87	0.84	-0.63	0.56
11,553.00	87.27	168.92	9,026.02	-2,705.33	-1,084.01	2,217.94	0.56	-0.53	-0.19
11,647.00	90.43	168.60	9,027.91	-2,797.49	-1,065.69	2,311.13	3.38	3.36	-0.34
11,742.00	91.78	168.23	9,026.08	-2,890.54	-1,046.62	2,405.40	1.47	1.42	-0.39
11,836.00	91.95	168.74	9,023.02	-2,982.60	-1,027.86	2,498.63	0.57	0.18	0.54
11,931.00	90.85	168.20	9,020.70	-3,075.65	-1,008.88	2,592.87	1.29	-1.16	-0.57
12,025.00	90.63	167.18	9,019.48	-3,167.48	-988.84	2,686.30	1.11	-0.23	-1.09
12,120.00	90.10	167.44	9,018.88	-3,260.16	-967.97	2,780.79	0.62	-0.56	0.27
12,214.00	90.69	167.23	9,018.23	-3,351.87	-947.36	2,874.28	0.67	0.63	-0.22
12,308.00	90.55	166.97	9,017.21	-3,443.49	-926.38	2,967.81	0.31	-0.15	-0.28
12,402.00	89.76	166.42	9,016.96	-3,534.97	-904.75	3,061.40	1.02	-0.84	-0.59
12,497.00	88.98	166.19	9,018.00	-3,627.26	-882.26	3,156.05	0.86	-0.82	-0.24
12,591.00	88.22	166.73	9,020.30	-3,718.62	-860.26	3,249.65	0.99	-0.81	0.57
12,685.00	90.07	168.19	9,021.70	-3,810.36	-839.85	3,343.11	2.51	1.97	1.55
12,780.00	90.91	168.65	9,020.89	-3,903.42	-820.78	3,437.39	1.01	0.88	0.48
12,873.00	91.22	168.26	9,019.16	-3,994.52	-802.17	3,529.67	0.54	0.33	-0.42
12,967.00	90.88	168.18	9,017.44	-4,086.53	-782.99	3,622.98	0.37	-0.36	-0.09
13,062.00	90.27	168.32	9,016.49	-4,179.53	-763.64	3,717.30	0.66	-0.64	0.15
13,156.00	90.49	168.20	9,015.86	-4,271.56	-744.51	3,810.62	0.27	0.23	-0.13
13,250.00	90.13	167.78	9,015.35	-4,363.50	-724.96	3,904.00	0.59	-0.38	-0.45
13,344.00	89.82	167.31	9,015.39	-4,455.29	-704.68	3,997.45	0.60	-0.33	-0.50
13,438.00	89.76	167.08	9,015.74	-4,546.95	-683.85	4,090.97	0.25	-0.06	-0.24
13,527.18	88.73	170.24	9,016.92	-4,634.37	-666.32	4,179.41	3.73	-1.16	3.54
LL Crossing @ 13527.18' MD									
13,532.00	88.67	170.41	9,017.03	-4,639.12	-665.51	4,184.17	3.73	-1.16	3.54
13,627.00	87.89	170.47	9,019.88	-4,732.76	-649.74	4,277.95	0.82	-0.82	0.06
13,721.00	90.01	171.30	9,021.60	-4,825.55	-634.85	4,370.64	2.42	2.26	0.88
13,815.00	91.05	171.46	9,020.73	-4,918.48	-620.76	4,463.21	1.12	1.11	0.17
13,909.00	91.02	171.14	9,019.03	-5,011.39	-606.54	4,555.79	0.34	-0.03	-0.34
14,003.00	91.25	167.51	9,017.17	-5,103.73	-589.14	4,648.86	3.87	0.24	-3.86
14,097.00	92.03	166.51	9,014.48	-5,195.28	-568.02	4,742.37	1.35	0.83	-1.06
14,191.00	91.72	166.30	9,011.41	-5,286.60	-545.93	4,835.96	0.40	-0.33	-0.22
14,285.00	91.58	166.02	9,008.70	-5,377.83	-523.46	4,929.59	0.33	-0.15	-0.30
14,380.00	92.03	165.34	9,005.71	-5,469.83	-499.97	5,024.28	0.86	0.47	-0.72
14,475.00	92.20	165.09	9,002.20	-5,561.63	-475.75	5,119.00	0.32	0.18	-0.26
14,569.00	92.70	165.04	8,998.18	-5,652.37	-451.54	5,212.72	0.53	0.53	-0.05
14,663.00	92.68	164.79	8,993.77	-5,743.03	-427.11	5,306.44	0.27	-0.02	-0.27
14,758.00	93.12	164.79	8,988.96	-5,834.58	-402.21	5,401.15	0.46	0.46	0.00
14,852.00	90.60	165.74	8,985.91	-5,925.43	-378.32	5,494.88	2.86	-2.68	1.01
14,946.00	90.69	166.00	8,984.86	-6,016.58	-355.37	5,588.58	0.29	0.10	0.28

SDT Survey Report

Company:	Ovintiv USA Inc.	Local Co-ordinate Reference:	Well UL Golden 8A 6HC
Project:	Andrews County, TX (TNC NAD 27)	TVD Reference:	3028.6+25 @ 3053.60usft (H&P 379)
Site:	UL Golden West Pad	MD Reference:	3028.6+25 @ 3053.60usft (H&P 379)
Well:	UL Golden 8A 6HC	North Reference:	Grid
Wellbore:	OH	Survey Calculation Method:	Minimum Curvature
Design:	OH	Database:	EDM 5000 Multi User Db

Survey									
Measured Depth (usft)	Inclination (°)	Azimuth (°)	Vertical Depth (usft)	+N/-S (usft)	+E/-W (usft)	Vertical Section (usft)	Dogleg Rate (°/100usft)	Build Rate (°/100usft)	Turn Rate (°/100usft)
15,041.00	90.83	166.87	8,983.60	-6,108.93	-333.09	5,683.21	0.93	0.15	0.92
15,135.00	89.93	168.54	8,982.97	-6,200.76	-313.08	5,776.63	2.02	-0.96	1.78
15,229.00	89.85	168.75	8,983.15	-6,292.92	-294.57	5,869.88	0.24	-0.09	0.22
15,323.00	89.34	168.57	8,983.82	-6,385.09	-276.09	5,963.12	0.58	-0.54	-0.19
15,418.00	89.54	168.83	8,984.75	-6,478.24	-257.48	6,057.34	0.35	0.21	0.27
15,512.00	89.15	169.02	8,985.82	-6,570.48	-239.42	6,150.52	0.46	-0.41	0.20
15,606.00	90.63	169.01	8,986.00	-6,662.76	-221.51	6,243.69	1.57	1.57	-0.01
15,700.00	90.77	169.12	8,984.85	-6,755.04	-203.68	6,336.84	0.19	0.15	0.12
15,794.00	90.66	169.14	8,983.68	-6,847.35	-185.95	6,429.98	0.12	-0.12	0.02
15,888.00	89.23	171.36	8,983.77	-6,939.98	-170.04	6,522.85	2.81	-1.52	2.36
15,982.00	88.00	174.16	8,986.04	-7,033.20	-158.19	6,614.97	3.25	-1.31	2.98
16,077.00	90.94	174.68	8,986.92	-7,127.73	-148.96	6,707.51	3.14	3.09	0.55
16,171.00	91.78	174.70	8,984.69	-7,221.30	-140.26	6,798.96	0.89	0.89	0.02
16,172.38	91.80	174.70	8,984.65	-7,222.67	-140.13	6,800.30	1.36	1.31	0.36
LL Crossing @ 16172.38' MD									
16,265.00	93.01	175.04	8,980.76	-7,314.84	-131.86	6,890.29	1.36	1.31	0.36
16,359.00	94.14	175.02	8,974.90	-7,408.30	-123.74	6,981.46	1.20	1.20	-0.02
16,453.00	92.90	173.16	8,969.13	-7,501.62	-114.07	7,072.98	2.37	-1.32	-1.98
16,547.00	91.11	174.00	8,965.84	-7,594.97	-103.57	7,164.80	2.10	-1.90	0.89
16,642.00	91.86	174.38	8,963.38	-7,689.45	-93.96	7,257.40	0.88	0.79	0.40
16,736.00	90.21	171.05	8,961.68	-7,782.66	-82.04	7,349.54	3.95	-1.76	-3.54
16,830.00	90.07	170.66	8,961.45	-7,875.46	-67.10	7,442.26	0.44	-0.15	-0.41
16,924.00	90.04	169.56	8,961.36	-7,968.06	-50.96	7,535.17	1.17	-0.03	-1.17
17,018.00	89.37	168.92	8,961.84	-8,060.41	-33.41	7,628.29	0.99	-0.71	-0.68
17,112.00	90.35	169.65	8,962.07	-8,152.77	-15.93	7,721.40	1.30	1.04	0.78
17,207.00	88.75	165.98	8,962.82	-8,245.61	4.12	7,815.78	4.21	-1.68	-3.86
17,301.00	88.36	165.34	8,965.19	-8,336.65	27.39	7,909.49	0.80	-0.41	-0.68
17,396.00	88.84	165.23	8,967.51	-8,428.50	51.51	8,004.24	0.52	0.51	-0.12
17,490.00	89.85	163.38	8,968.59	-8,518.99	76.94	8,098.11	2.24	1.07	-1.97
17,584.00	89.29	162.47	8,969.29	-8,608.84	104.54	8,192.07	1.14	-0.60	-0.97
17,679.00	89.85	162.57	8,970.00	-8,699.45	133.07	8,287.05	0.60	0.59	0.11
17,773.00	89.73	162.71	8,970.35	-8,789.17	161.12	8,381.03	0.20	-0.13	0.15
17,867.00	90.41	160.58	8,970.23	-8,878.38	190.72	8,475.02	2.38	0.72	-2.27
17,962.00	90.49	160.24	8,969.49	-8,967.88	222.57	8,570.00	0.37	0.08	-0.36
18,056.00	91.11	160.55	8,968.17	-9,056.42	254.11	8,663.98	0.74	0.66	0.33
18,151.00	89.57	159.98	8,967.61	-9,145.84	286.18	8,758.95	1.73	-1.62	-0.60
18,245.00	88.75	160.04	8,968.99	-9,234.16	318.31	8,852.92	0.87	-0.87	0.06
18,339.00	90.46	159.66	8,969.64	-9,322.40	350.69	8,946.88	1.86	1.82	-0.40
18,433.00	89.03	160.11	8,970.06	-9,410.67	383.02	9,040.84	1.59	-1.52	0.48
18,527.00	90.38	160.08	8,970.54	-9,499.05	415.02	9,134.81	1.44	1.44	-0.03
18,622.00	92.14	160.14	8,968.45	-9,588.36	447.33	9,229.76	1.85	1.85	0.06
18,658.00	92.23	160.18	8,967.08	-9,622.19	459.54	9,265.73	0.27	0.25	0.11
18,720.00	92.23	160.18	8,964.67	-9,680.48	480.55	9,327.67	0.00	0.00	0.00
BHL@ 18720' MD									

SDT

Survey Report

Company:	Ovintiv USA Inc.	Local Co-ordinate Reference:	Well UL Golden 8A 6HC
Project:	Andrews County, TX (TNC NAD 27)	TVD Reference:	3028.6+25 @ 3053.60usft (H&P 379)
Site:	UL Golden West Pad	MD Reference:	3028.6+25 @ 3053.60usft (H&P 379)
Well:	UL Golden 8A 6HC	North Reference:	Grid
Wellbore:	OH	Survey Calculation Method:	Minimum Curvature
Design:	OH	Database:	EDM 5000 Multi User Db

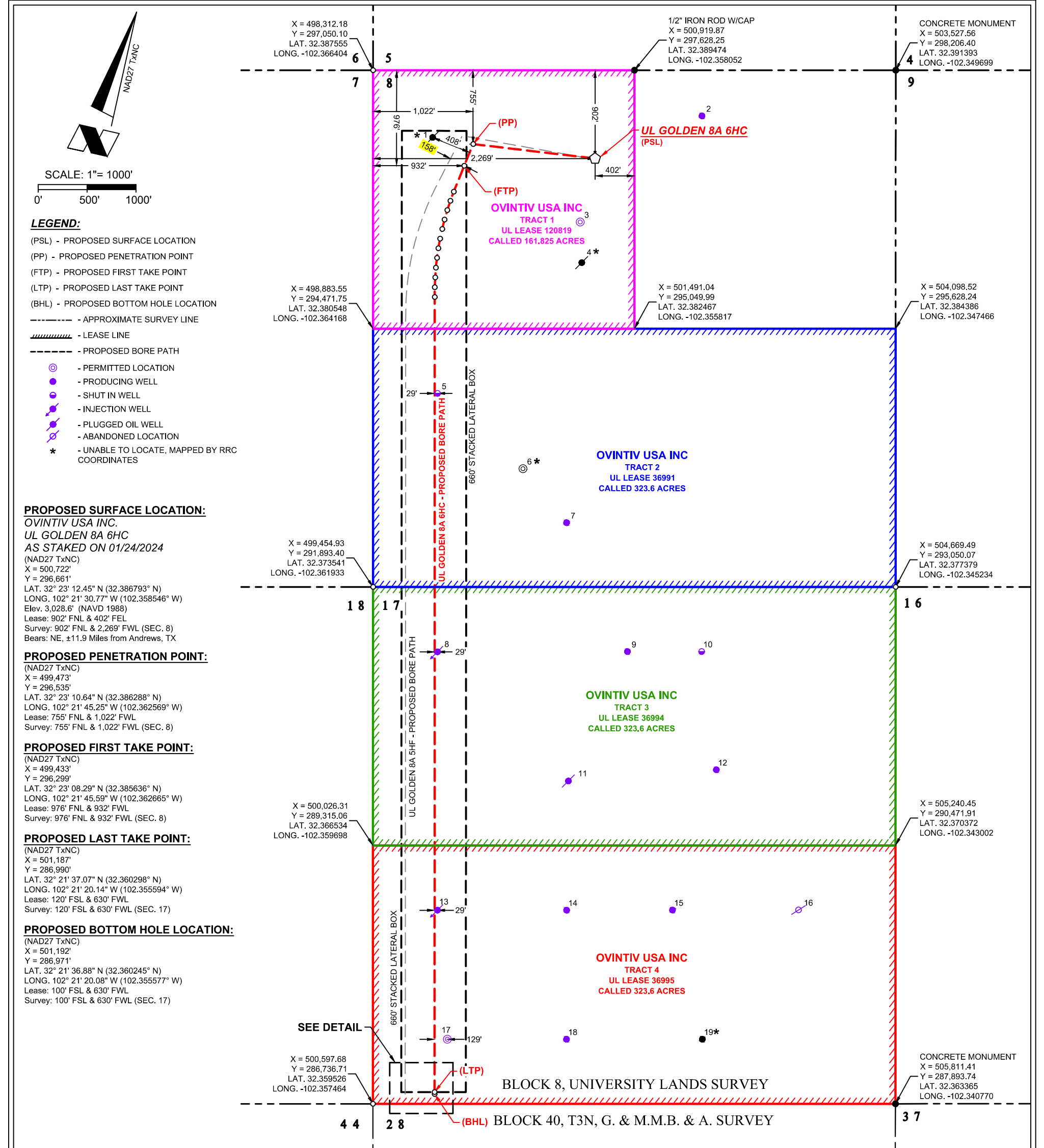
Survey									
Measured Depth (usft)	Inclination (°)	Azimuth (°)	Vertical Depth (usft)	+N/-S (usft)	+E/-W (usft)	Vertical Section (usft)	Dogleg Rate (°/100usft)	Build Rate (°/100usft)	Turn Rate (°/100usft)

Design Targets									
Target Name	Dip Angle (°)	Dip Dir. (°)	TVD (usft)	+N/-S (usft)	+E/-W (usft)	Northing (usft)	Easting (usft)	Latitude	Longitude
- hit/miss target									
- Shape									
6HC SHL	0.00	360.00	0.00	0.00	0.00	296,660.99	500,722.00	32.386793	-102.358547
- actual wellpath hits target center									
- Point									
6HC BHL	0.00	360.00	8,964.67	-9,680.48	480.55	286,980.52	501,202.55	32.360273	-102.355544
- actual wellpath hits target center									
- Point									
6HC PBHL	0.00	0.00	9,014.00	-9,685.25	468.46	286,975.75	501,190.46	32.360258	-102.355582
- actual wellpath misses target center by 50.99usft at 18718.47usft MD (8964.73 TVD, -9679.04 N, 480.03 E)									
- Point									

Formations						
Measured Depth (usft)	Vertical Depth (usft)	Name	Lithology	Dip (°)	Dip Direction (°)	
2,142.25	2,142.00	Rustler				
3,324.78	3,281.00	Yates				
5,113.33	4,959.00	San Andres				
6,490.46	6,299.00	Glorieta				
7,283.39	7,090.00	Clearfork				
8,772.80	8,576.00	Upper Spraberry				
9,048.75	8,814.00	MSB				

Design Annotations					
Measured Depth (usft)	Vertical Depth (usft)	Local Coordinates			
		+N/-S (usft)	+E/-W (usft)	Comment	
9,216.50	8,917.14	-410.36	-1,305.37	60° INC @ 9216.5' MD	
9,369.32	8,980.73	-548.77	-1,314.88	70° INC @ 9369.32' MD	
9,441.28	9,000.22	-617.89	-1,317.15	80° INC @ 9441.28' MD	
10,885.15	9,026.05	-2,054.56	-1,231.25	LL Crossing @ 10885.15' MD	
13,527.18	9,016.92	-4,634.37	-666.32	LL Crossing @ 13527.18' MD	
16,172.38	8,984.65	-7,222.67	-140.13	LL Crossing @ 16172.38' MD	
18,720.00	8,964.67	-9,680.48	480.55	BHL @ 18720' MD	

Checked By: _____ Approved By: _____ Date: _____




NOTES:

1. This plat represents a survey made on the ground and meets the requirements for filing a well location plat with the Texas Railroad Commission and is intended solely for that purpose. Lease lines shown hereon were established from field measurements and record evidence. Mineral title information shown hereon was furnished by Oviniv USA Inc. and/or their agent(s). This plat does not meet the requirements for easement or boundary surveys in the State of Texas and shall not be used to convey title to real property.

2. All bearings, distances, areas, and coordinates refer to the North American Datum of 1927, Texas North Central Zone, US Survey Feet. Elevations refer to the North American Vertical Datum of 1988 and are derived from static and kinematic GPS observations unless noted otherwise.

3. Existing vertical wells shown hereon are based on field observations unless otherwise noted.



C. H. Fenstermaker & Associates, LLC
16340 Park Ten Place
Suite 165
Houston, TX 77084
713-840-9995
TX Firm 100285-01


REVISIONS	
1	03/26/2024 SAB REVISED 660' LATERAL BOX
2	03/28/2024 SAB REVISED 660' LATERAL BOX
3	04/08/2024 SAB REVISED FTP & LATERAL BOX
DRAWN BY: SAB PROJ. MGR.: BLH	
DATE: 03/05/2024	
JOB#: 2237163.00C	SHEET 1 OF 1
FILENAME: PP_UL GOLDEN 8A 6HC.DWG	

FOR THE EXCLUSIVE USE OF
OVINTIV USA INC.
I, Steven M. Coleman, Registered Professional
Land Surveyor, do hereby state the above plat to
be true and correct to the best of my knowledge.

Steven M. Coleman

Steven M. Coleman
Registered Professional Land Surveyor
Registration No. 5063





PERMIT PLAT
UL GOLDEN 8A 6HC
SITUATED IN
SECTION 8 & SECTION 17, BLOCK 8,
UNIVERSITY LANDS SURVEY
ANDREWS COUNTY, TEXAS

T:\2023\2237163\DWG\PP_UL GOLDEN 8A 6HC-040824.dwg