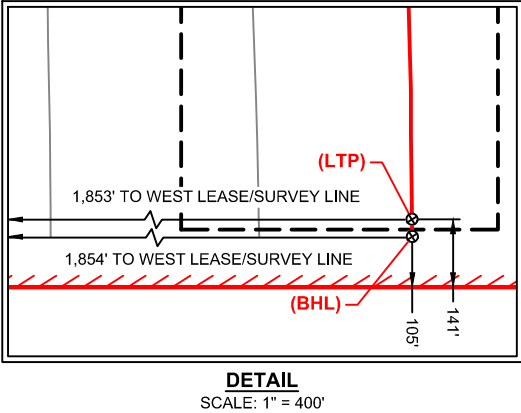



OFFSET WELLS	
ID	API NUMBER
1	00310223
2	00345802
3	00344668
4	00303806
5	00303780
6	00311076
7	00303601
8	00303782
9	00338172
10	00310120
11	00303785
12	00338767
13	00303554
14	00338736
15	00330814
16	00338797
17	00338798
18	00303786
19	00303777

EFFECTIVE LATERAL	
TRACT 1	1,798'
TRACT 2	2,642'
TRACT 3	2,642'
TRACT 4	2,501'
FTP - LTP	9,583'





C. H. Fenstermaker & Associates, LLC  
16340 Park Ten Place  
Suite 165  
Houston, TX 77084  
713-840-9995  
TX Firm 100285-01

REVISIONS	
1	
2	
3	

DRAWN BY: SAB/CCS	PROJ. MGR: BLH
DATE: 09/23/2024	
JOB#: 2237163.00C	SHEET 1 OF 1
FILENAME: AC_UL GOLDEN 8C 14HD.DWG	

FOR THE EXCLUSIVE USE OF  
OVINIV USA INC.  
I, Steven M. Coleman, Registered Professional  
Land Surveyor, do hereby state the above plat to  
be true and correct to the best of my knowledge.

*Steven M. Coleman*

Steven M. Coleman  
Registered Professional Land Surveyor  
Registration No. 5063





**AS-COMPLETE PLAT**  
**UL GOLDEN 8C 14HD**  
SITUATED IN  
SECTION 8 & SECTION 17, BLOCK 8,  
UNIVERSITY LANDS SURVEY  
ANDREWS COUNTY, TEXAS