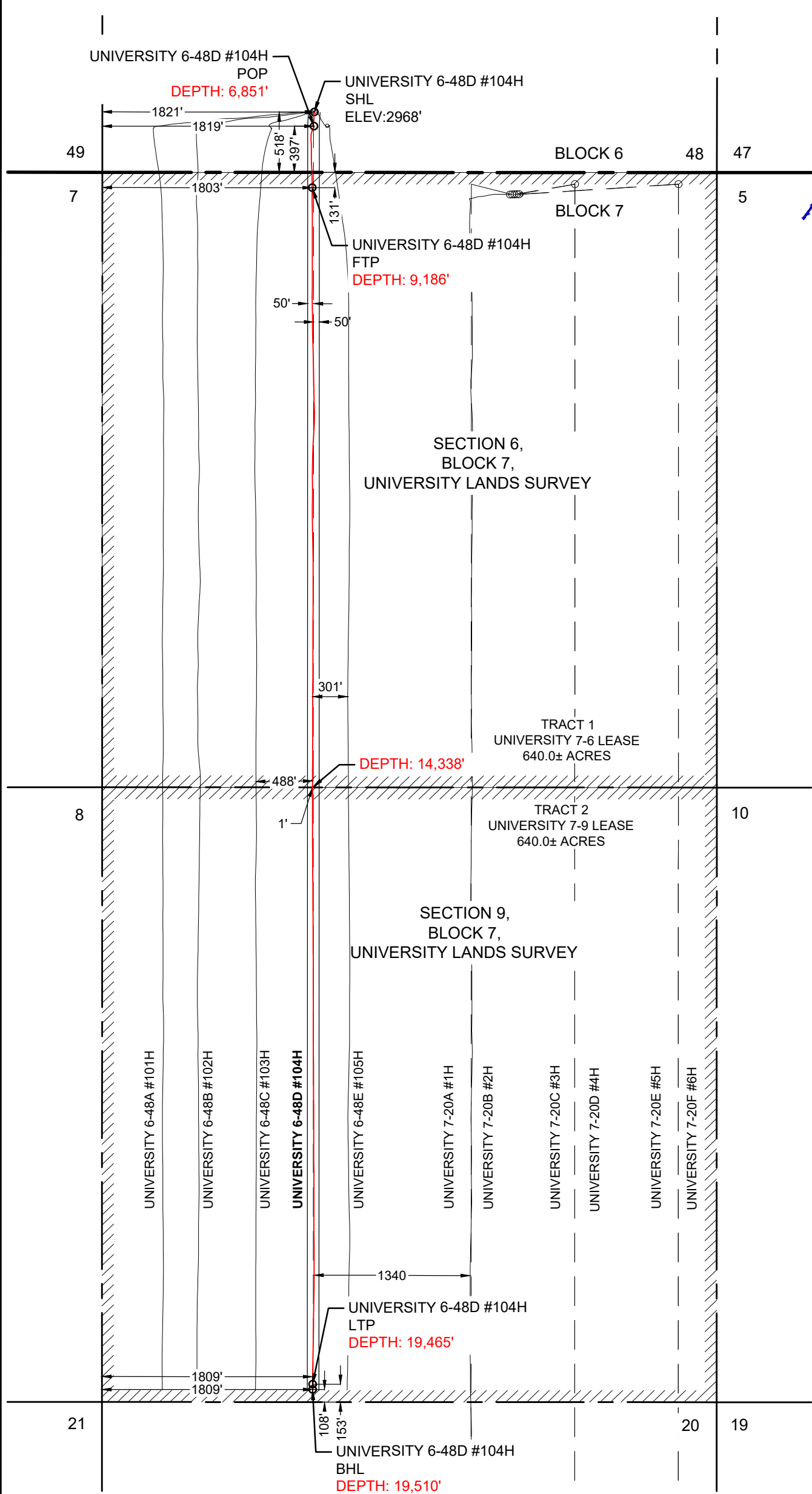


UNIVERSITY 6-48D #104H	EASTING (X) (NAD 27)	NORTHING (Y) (NAD 27)	LATITUDE (NAD 27)	LONGITUDE (NAD 27)	SECTION LINE		SECTION LINE		LEASE LINE		LEASE LINE		SECTION
					FOOTAGE	FNL\FSL	FOOTAGE	FEL\FWL	FOOTAGE	FNL\FSL	FOOTAGE	FEL\FWL	
SURFACE HOLE LOCATION (SHL)	1403673.5	1009251.5	32.427178	-102.265566	518'	FSL	1821'	FWL	518'	FSL	1821'	FWL	48
POINT OF PENETRATION (POP)	1403700.3	1009132.9	32.426854	-102.265472	397'	FSL	1819'	FWL	397'	FSL	1819'	FWL	48
FIRST TAKE POINT (FTP)	1403814.1	1008617.7	32.425444	-102.265074	131'	FNL	1803'	FWL	131'	FNL	1803'	FWL	6
LAST TAKE POINT (LTP)	1406325.1	998652.5	32.398181	-102.256382	153'	FSL	1809'	FWL	153'	FSL	1809'	FWL	9
BOTTOM HOLE LOCATION (BHL)	1406335.6	998608.7	32.398062	-102.256345	108'	FSL	1809'	FWL	108'	FSL	1809'	FWL	9

UNIVERSITY 6-48D #104H	LENGTH
TRACT 1 UNIVERSITY 7-6	5,152'
TRACT 2 UNIVERSITY 7-9	5,127'
TOTAL PRODUCTIVE LATERAL LENGTH	10,279'



NOTE: WELL IS LOCATED APPROXIMATELY 18 MILES NORTHEAST OF ANDREWS, ANDREWS COUNTY, TEXAS

3300 NORTH A STREET, BUILDING 2, SUITE 120  
MIDLAND, TX 79705-5471  
TEL (432) 253-3255  
TBPELS SURVEYING FIRM #10193998

DATE: 5/12/2023  
BY: Y. BASCUE  
AVO: 047474.237

**LEGEND**

- SECTION LINE
- BLOCK/TOWNSHIP LINE
- LEASE LINE
- SUBJECT AS-DRILLED LATERAL
- AS-DRILLED LATERAL
- PERMITTED LATERAL
- PROPOSED LATERAL
- PROPOSED WELL

**NOTES:**

- THE BASIS OF BEARING OF THE SURVEY IS THE TEXAS COORDINATE SYSTEM, NORTH AMERICAN DATUM 1927 (NAD 27), CENTRAL ZONE (4203).
- ALL TEXAS STATE PLANE COORDINATES AND GEOGRAPHIC COORDINATES SHOWN HEREON ARE NAD 27 GRID COORDINATES AS COMPUTED BY CORPSCON VERSION 6.0.1. ALL GEOGRAPHIC COORDINATES SHOWN HEREON WERE CONVERTED USING CORPSCON VERSION 6.0.1. UNLESS OTHERWISE NOTED, ALL DISTANCES SHOWN HEREON ARE GRID DISTANCES AND THEY CAN BE CONVERTED TO SURFACE WHEN MULTIPLIED WITH A "SURFACE ADJUSTMENT FACTOR" OF 1.000188348, AS CALCULATED BY CORPSCON.
- ELEVATIONS SHOWN HEREON ARE NAVD88 AS DERIVED BY GPS.
- THIS EXHIBIT IS FOR TEXAS RAILROAD COMMISSION WELL PERMITTING PURPOSES ONLY. BOUNDARY LINES AND ACREAGE SHOWN HEREON REFLECT THE SURVEYORS PROFESSIONAL OPINION OF MINERAL RIGHTS AS DETERMINED FROM CLIENT-PROVIDED OIL AND GAS MINERAL LEASE DOCUMENTATION. THE INFORMATION DEPICTED HEREON SHALL NOT BE USED IN THE CONVEYANCE OF FEE TITLE TO REAL PROPERTY.
- ALL MEASUREMENTS TO LEASE, UNIT, AND SURVEY LINES ARE PERPENDICULAR TO SAID LINES.
- THIS SURVEY WAS PREPARED WITHOUT THE BENEFIT OF A TITLE REPORT.
- THE AS-DRILLED DATA USED TO DEPICT THE WELL BORE PATH WAS PROVIDED BY OTHERS. NO WARRANTY IS EITHER EXPRESSED OF IMPLIED AS TO THE ACCURACY OR THE INFORMATION HEREIN.

**PIONEER NATURAL RESOURCES  
USA, INC.**

**FINAL AS-DRILLED PLAT**

UNIVERSITY 6-48D #104H

UNIVERSITY 7-6 - 640.0± ACRES  
UNIVERSITY 7-9 - 640.0± ACRES  
TOTAL TRACT: 1,280.0± ACRES  
(SURFACE AREA)

LOCATED IN:  
SECTION 48, BLOCK 6,  
SECTION 6, BLOCK 7,  
SECTION 9, BLOCK 7,  
UNIVERSITY LANDS SURVEY,  
ANDREWS COUNTY, TEXAS