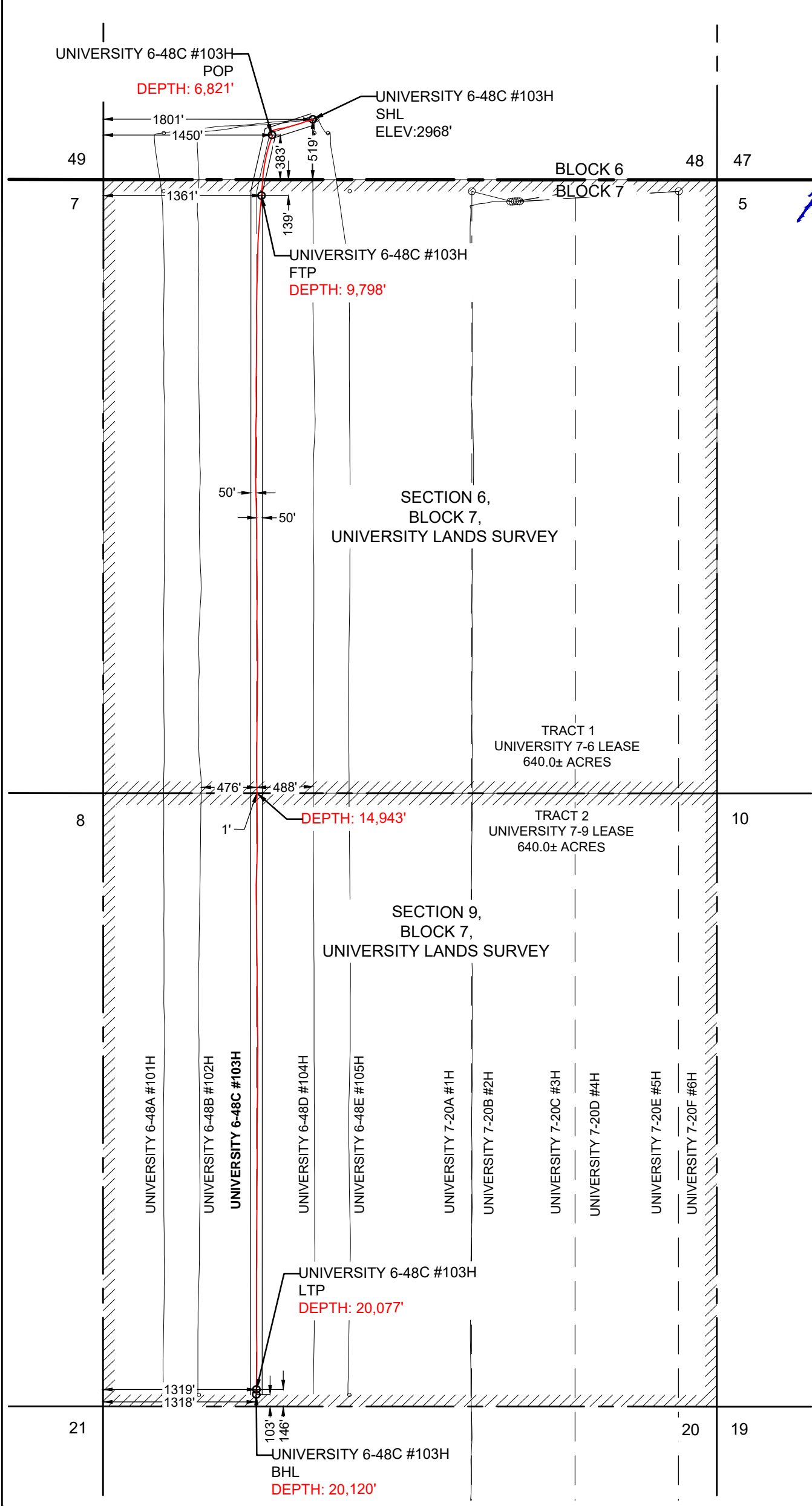


UNIVERSITY 6-48C #103H	EASTING (X) (NAD 27)	NORTHING (Y) (NAD 27)	LATITUDE (NAD 27)	LONGITUDE (NAD 27)	SECTION LINE		SECTION LINE		LEASE LINE		LEASE LINE		SECTION
					FOOTAGE	FNL\FSL	FOOTAGE	FEL\FWL	FOOTAGE	FNL\FSL	FOOTAGE	FEL\FWL	
SURFACE HOLE LOCATION (SHL)	1403654.0	1009247.0	32.427165	-102.265628	519'	FSL	1801'	FWL	519'	FSL	1801'	FWL	48
POINT OF PENETRATION (POP)	1403346.2	1009030.2	32.426555	-102.266614	383'	FSL	1450'	FWL	383'	FSL	1450'	FWL	48
FIRST TAKE POINT (FTP)	1403386.9	1008502.1	32.425106	-102.266452	139'	FNL	1361'	FWL	139'	FNL	1361'	FWL	6
LAST TAKE POINT (LTP)	1405851.7	998525.9	32.397811	-102.257908	146'	FSL	1319'	FWL	146'	FSL	1319'	FWL	9
BOTTOM HOLE LOCATION (BHL)	1405861.0	998483.9	32.397696	-102.257875	103'	FSL	1318'	FWL	103'	FSL	1318'	FWL	9

UNIVERSITY 6-48C #103H	LENGTH
TRACT 1 UNIVERSITY 7-6	5,145'
TRACT 2 UNIVERSITY 7-9	5,134'
TOTAL PRODUCTIVE LATERAL LENGTH	10,279'



SCALE: 1" = 1000'

NOTE: WELL IS LOCATED APPROXIMATELY 18 MILES NORTHEAST OF ANDREWS, ANDREWS COUNTY, TEXAS

3300 NORTH A STREET, BUILDING 2, SUITE 120
MIDLAND, TX 79705-5471
TEL (432) 253-3255
TBPELS SURVEYING FIRM #10193998

DATE: 2/14/2023
BY: Y. BASCUE
AVO: 047474.237

LEGEND

- SECTION LINE
- BLOCK/TOWNSHIP LINE
- LEASE LINE
- SUBJECT AS-DRILLED LATERAL
- AS-DRILLED LATERAL
- PERMITTED LATERAL
- PROPOSED LATERAL
- PROPOSED WELL

NOTES:

- THE BASIS OF BEARING OF THE SURVEY IS THE TEXAS COORDINATE SYSTEM, NORTH AMERICAN DATUM 1927 (NAD 27), CENTRAL ZONE (4203).
- ALL TEXAS STATE PLANE COORDINATES AND GEOGRAPHIC COORDINATES SHOWN HEREON ARE NAD 27 GRID COORDINATES AS COMPUTED BY CORPSCON VERSION 6.0.1. ALL GEOGRAPHIC COORDINATES SHOWN HEREON WERE CONVERTED USING CORPSCON VERSION 6.0.1. UNLESS OTHERWISE NOTED, ALL DISTANCES SHOWN HEREON ARE GRID DISTANCES AND THEY CAN BE CONVERTED TO SURFACE WHEN MULTIPLIED WITH A "SURFACE ADJUSTMENT FACTOR" OF 1.000188348, AS CALCULATED BY CORPSCON.
- ELEVATIONS SHOWN HEREON ARE NAVD88 AS DERIVED BY GPS.
- THIS EXHIBIT IS FOR TEXAS RAILROAD COMMISSION WELL PERMITTING PURPOSES ONLY. BOUNDARY LINES AND ACREAGE SHOWN HEREON REFLECT THE SURVEYORS PROFESSIONAL OPINION OF MINERAL RIGHTS AS DETERMINED FROM CLIENT-PROVIDED OIL AND GAS MINERAL LEASE DOCUMENTATION. THE INFORMATION DEPICTED HEREON SHALL NOT BE USED IN THE CONVEYANCE OF FEE TITLE TO REAL PROPERTY.
- ALL MEASUREMENTS TO LEASE, UNIT, AND SURVEY LINES ARE PERPENDICULAR TO SAID LINES.
- THIS SURVEY WAS PREPARED WITHOUT THE BENEFIT OF A TITLE REPORT.

PIONEER NATURAL RESOURCES
USA, INC.

FINAL AS-DRILLED PLAT

UNIVERSITY 6-48C #103H

UNIVERSITY 7-6 - 640.0± ACRES
UNIVERSITY 7-9 - 640.0± ACRES
TOTAL TRACT: 1,280.0± ACRES
(SURFACE AREA)

LOCATED IN:
SECTION 48, BLOCK 6,
SECTION 6, BLOCK 7,
SECTION 9, BLOCK 7,
UNIVERSITY LANDS SURVEY,
ANDREWS COUNTY, TEXAS