



LEASE NAME & WELL NO.:
**UNIVERSITY 5-35 N6 H 6LS
AS-COMplete**

NEAREST TOWN IN COUNTY:
±12.43 MILES NORTHEAST OF ANDREWS, TEXAS

LOCATION DESCRIPTION:

SHL/PP:SECTION 38, BLOCK 5,
UNIVERSITY LAND SURVEY
FTP:SECTION 35, BLOCK 5,
UNIVERSITY LAND SURVEY
LTP/BHL:SECTION 26, BLOCK 5,
UNIVERSITY LAND SURVEY
ANDREWS COUNTY, TEXAS

Surface Hole Location:

GROUND ELEVATION:

SHL Ground Elevation: 2987'

COORDINATES:

NAD 27 TX-NC ZONE:

X = 515529 Y = 310996

LAT.: N 32°25'40.90" LONG.: W 102°18'45.93"

LAT.: N 32.4280286 LONG.: W 102.3127582

SURVEY LINE PERPENDICULARS:

670' FNL & 1535' FEL (SEC. 38)

LEASE LINE PERPENDICULARS:

OFF LEASE

Penetration Point:

COORDINATES:

NAD 27 TX-NC ZONE:

X = 514555 Y = 310944

LAT.: N 32°25'39.95" LONG.: W 102°18'57.26"

LAT.: N 32.4277646 LONG.: W 102.3159049

SURVEY LINE PERPENDICULARS:

509' FNL & 2497' FEL (SEC. 38)

LEASE LINE PERPENDICULARS:

OFF LEASE

First Take Point:

COORDINATES:

NAD 27 TX-NC ZONE:

X = 514373 Y = 311504

LAT.: N 32°25'45.40" LONG.: W 102°18'59.68"

LAT.: N 32.4292778 LONG.: W 102.3165774

SURVEY LINE PERPENDICULARS:

77' FSL & 2553' FEL (SEC. 35)

LEASE LINE PERPENDICULARS:

77' FSL & 118' FWL

Last Take Point:

COORDINATES:

NAD 27 TX-NC ZONE:

X = 512704 Y = 319071

LAT.: N 32°26'59.45" LONG.: W 102°19'23.17"

LAT.: N 32.4498465 LONG.: W 102.3231037

SURVEY LINE PERPENDICULARS:

2545' FSL & 2543' FEL (SEC. 26)

LEASE LINE PERPENDICULARS:

94' FNL & 128' FWL

Bottom Hole Location:

COORDINATES:

NAD 27 TX-NC ZONE:

X = 512684 Y = 319182

LAT.: N 32°27'00.54" LONG.: W 102°19'23.47"

LAT.: N 32.4501491 LONG.: W 102.3231854

SURVEY LINE PERPENDICULARS:

2621' FNL & 2538' FEL (SEC. 26)

LEASE LINE PERPENDICULARS:

OFF LEASE

LEGEND

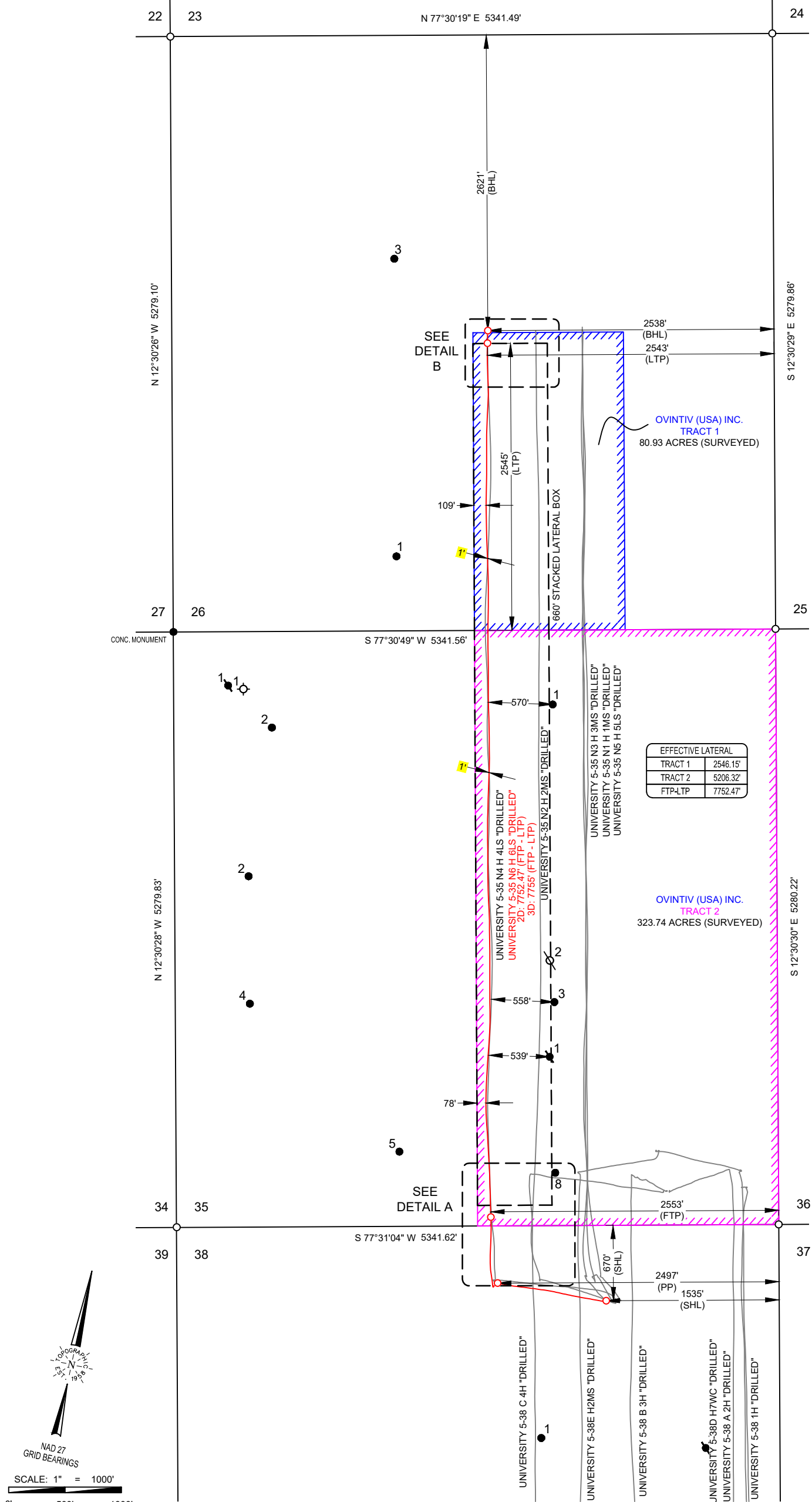
- Section Line
Mineral Tract
Block Line
Tract 1
80.93 ACRES (SURVEYED)
Tract 2
323.74 ACRES (SURVEYED)
Found Monument
Calculated Corner

COGO: 762-107318 Surveyed: 06/26/23

Drawn By: EAH; 06/29/2023

Revision: EAH(02) 11/22/23

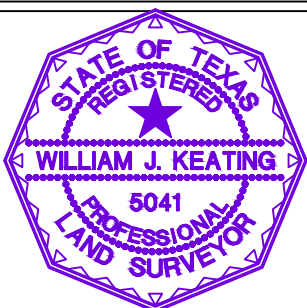
All Coordinates are in NAD 27 TX-NC Zone unless otherwise noted.



CERTIFICATION:

This well location shown on this permit plat was surveyed under my direct supervision. All As-Complete information provided by client. This plat is for Texas Railroad Commission permit purpose only and should not be considered a boundary survey.

William J. Keating
Texas Reg. No. 5041



Signature Date
11/22/23



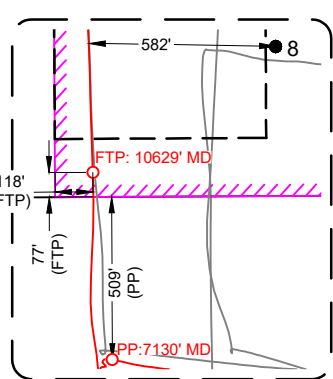
2903 NORTH BIG SPRING • MIDLAND, TEXAS 79705
TELEPHONE: (432) 682-1653 OR (800) 767-1653 • FAX (432) 682-1743
TEXAS FIRM REGISTRATION NO. 10042500
WWW.TOPOGRAPHIC.COM

FILE NAME: AC_UNIVERSITY_5-35_N6_H_6LS_REV2 ORIGINAL DOC. SIZE: 11"x17" SCALE: 1"=1000'

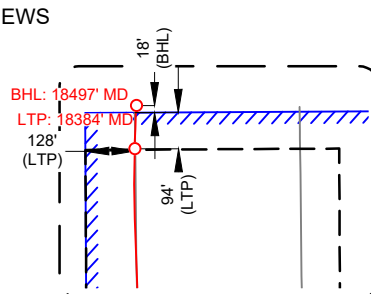
Special Notes:

Lease information provided by client

*Unable to locate these wells on the ground. The coordinates provided were plotted per R.R.C. data base and aerial imagery.



DETAIL VIEWS



DETAIL VIEW A
SCALE: 1" = 600'

DETAIL VIEW B
SCALE: 1" = 500'