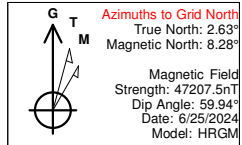




County: Andrews County, TX (TNC NAD 27)
Site: UL Wash Park Pad
Well: UL Wash Park 2A 1HF
Depth Reference: 3012+25 @ 3037.00usft (H&P 379)
Rig: H&P 379
Plan: OH
Job #: 18773



TOTAL CORRECTION: 8.28°

ANNOTATIONS

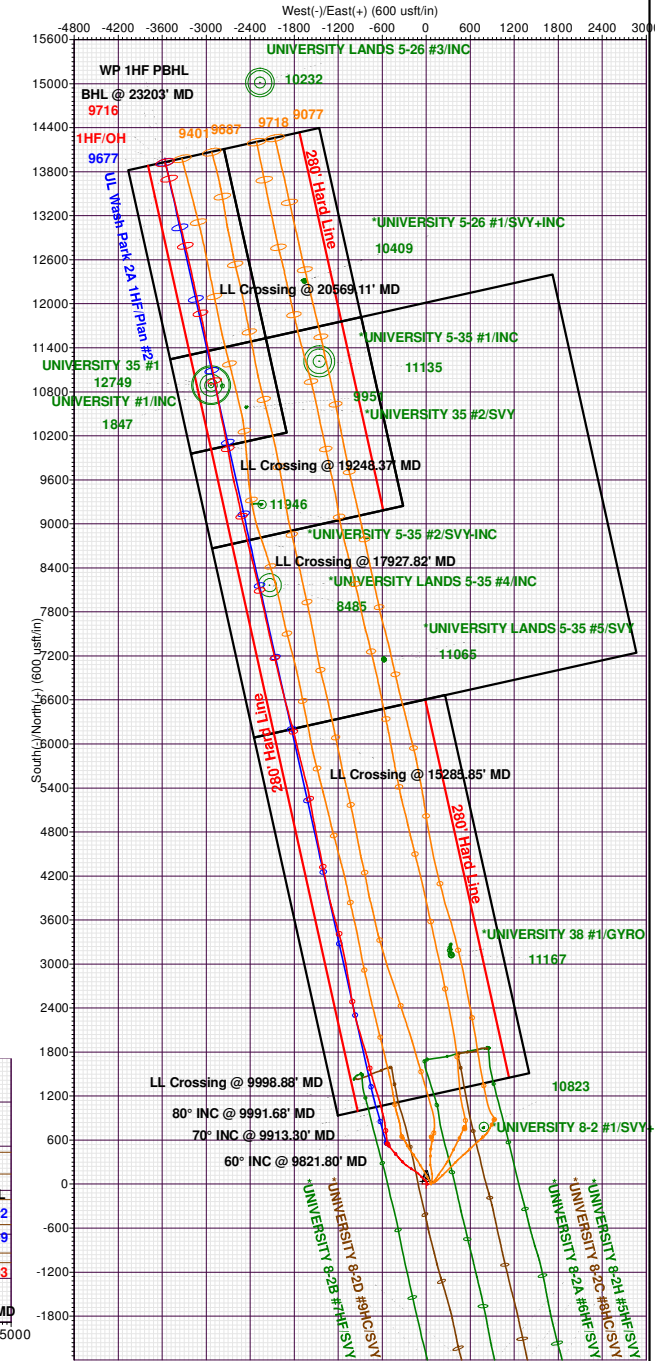
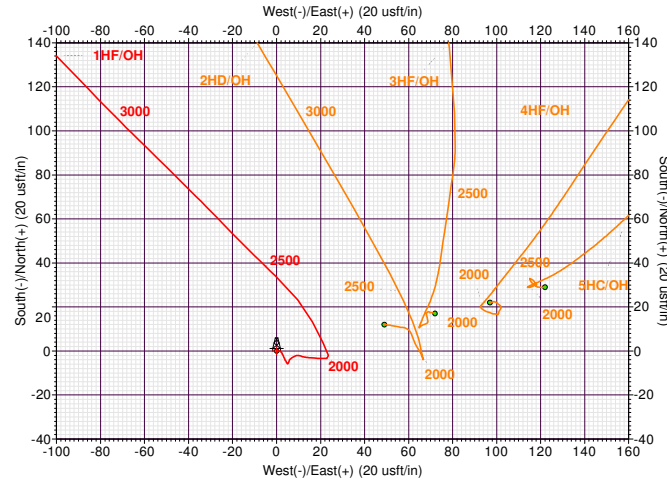
MD	Inc	Azi	TVD	+N/-S	+E/-W	Vsect	Departure	Annotation
9821.80	58.98	347.16	9626.03	903.49	-578.83	1007.68	1229.22	60° INC @ 9821.80' MD
9913.30	69.99	345.98	9665.18	983.48	-599.33	1090.21	1311.69	70° INC @ 9913.30' MD
9991.68	79.99	346.90	9685.39	1057.20	-616.15	1165.83	1386.77	80° INC @ 9991.68' MD
9998.88	80.89	346.51	9686.59	1064.11	-617.79	1172.92	1393.91	LL Crossing @ 9998.88' MD
15285.85	88.60	345.35	9707.11	6205.78	-1819.20	6452.80	6678.52	LL Crossing @ 15285.85' MD
17927.82	88.37	346.69	9716.20	8772.22	-2439.89	9092.79	9319.27	LL Crossing @ 17927.82' MD
19248.37	90.84	349.11	9727.91	10063.42	-2714.16	10412.74	10639.63	LL Crossing @ 19248.37' MD
20569.11	88.41	347.91	9735.13	11358.91	-2969.04	11732.65	11960.00	LL Crossing @ 20569.11' MD
23203.00	90.13	346.13	9716.03	13924.68	-3559.62	14365.45	14593.07	BHL @ 23203' MD

DESIGN TARGET DETAILS

Name	TVD	+N/-S	+E/-W	Northing	Easting	Latitude	Longitude
WP 1HF SHL	0.00	0.01	0.00	304738.00	514016.00	32.410654	-102.316727
WP 1HF PBHL	9677.00	13927.01	-3556.00	318665.00	510460.00	32.448449	-102.330311
WP 1HF BHL	9716.03	13924.68	-3559.62	318662.67	510456.38	32.448442	-102.330323

FORMATION TOP DETAILS

TVDPath	MDPath	Formation
2113.00	2113.28	Rustler
3234.00	3252.00	Yates
4857.00	4899.60	San Andres
6187.00	6246.26	Glorieta
7053.00	7120.05	Clearfork
8568.00	8635.41	U/Spraberry
8817.00	8884.42	MSB
9105.00	9172.79	Jo Mill
9392.00	9482.44	LSB
9715.00	10596.65	Dean



Ovintiv USA Inc.

Andrews County, TX (TNC NAD 27)

UL Wash Park Pad

UL Wash Park 2A 1HF

OH

Design: OH

Standard Survey Report

26 August, 2024

SDT
Survey Report

Company:	Ovintiv USA Inc.	Local Co-ordinate Reference:	Well UL Wash Park 2A 1HF
Project:	Andrews County, TX (TNC NAD 27)	TVD Reference:	3012+25 @ 3037.00usft (H&P 379)
Site:	UL Wash Park Pad	MD Reference:	3012+25 @ 3037.00usft (H&P 379)
Well:	UL Wash Park 2A 1HF	North Reference:	Grid
Wellbore:	OH	Survey Calculation Method:	Minimum Curvature
Design:	OH	Database:	EDM 5000 Multi User Db

Project	Andrews County, TX (TNC NAD 27)		
Map System:	US State Plane 1927 (Exact solution)	System Datum:	Mean Sea Level
Geo Datum:	NAD 1927 (NADCON CONUS)		
Map Zone:	Texas North Central 4202		

Site		UL Wash Park Pad			
Site Position:		Northing:	304,738.00 usft	Latitude:	32.410654
From:	Map	Easting:	514,016.00 usft	Longitude:	-102.316727
Position Uncertainty:		0.00 usft	Slot Radius:	13-3/16 "	

Well		UL Wash Park 2A 1HF				
Well Position	+N/-S	0.00 usft	Northing:	304,737.98 usft	Latitude:	32.410654
	+E/-W	0.00 usft	Easting:	514,016.00 usft	Longitude:	-102.316727
Position Uncertainty		3.28 usft	Wellhead Elevation:	usft	Ground Level:	3,012.00 usft
Grid Convergence:		-2.63 °				

Wellbore	OH				
Magnetics	Model Name	Sample Date	Declination (°)	Dip Angle (°)	Field Strength (nT)
	HRGM	6/25/2024	5.66	59.94	47,207.46613941

Design	OH				
Audit Notes:					
Version:	1.0	Phase:	ACTUAL	Tie On Depth:	0.00
Vertical Section:	Depth From (TVD) (usft)	+N/-S (usft)	+E/-W (usft)	Direction (°)	
	0.00	0.00	0.00	347.45	

Survey Program	Date	8/26/2024			
From (usft)	To (usft)	Survey (Wellbore)	Tool Name	Description	
162.00	1,843.00	Survey #1 (OH)	MWD	Geolink MWD	
1,993.00	23,143.00	Survey #2 (OH)	MWD+IFR1+MS	OWSG MWD + IFR1 + Multi-Station Correction	
23,203.00	23,203.00	Survey #3 (OH)	A026Ua_BLIND	OWSG BLIND	

Survey										
Measured Depth (usft)	Inclination (°)	Azimuth (°)	Vertical Depth (usft)	+N/-S (usft)	+E/-W (usft)	Vertical Section (usft)	Dogleg Rate (°/100usft)	Build Rate (°/100usft)	Turn Rate (°/100usft)	
0.00	0.00	0.00	0.00	0.00	0.00	0.00	0.00	0.00	0.00	
162.00	0.84	92.15	161.99	-0.04	1.19	-0.30	0.52	0.52	0.00	
284.00	1.45	155.61	283.97	-1.48	2.72	-2.04	1.07	0.50	52.02	
371.00	0.97	157.90	370.95	-3.17	3.45	-3.84	0.55	-0.55	2.63	
457.00	0.62	145.59	456.95	-4.23	3.99	-4.99	0.45	-0.41	-14.31	
543.00	0.88	153.68	542.94	-5.20	4.54	-6.07	0.33	0.30	9.41	
629.00	0.26	96.46	628.93	-5.82	5.03	-6.77	0.90	-0.72	-66.53	
717.00	0.53	24.30	716.93	-5.47	5.39	-6.51	0.58	0.31	-82.00	

SDT

Survey Report

Company:	Ovintiv USA Inc.	Local Co-ordinate Reference:	Well UL Wash Park 2A 1HF
Project:	Andrews County, TX (TNC NAD 27)	TVD Reference:	3012+25 @ 3037.00usft (H&P 379)
Site:	UL Wash Park Pad	MD Reference:	3012+25 @ 3037.00usft (H&P 379)
Well:	UL Wash Park 2A 1HF	North Reference:	Grid
Wellbore:	OH	Survey Calculation Method:	Minimum Curvature
Design:	OH	Database:	EDM 5000 Multi User Db

Survey									
Measured Depth (usft)	Inclination (°)	Azimuth (°)	Vertical Depth (usft)	+N/-S (usft)	+E/-W (usft)	Vertical Section (usft)	Dogleg Rate (°/100usft)	Build Rate (°/100usft)	Turn Rate (°/100usft)
801.00	0.53	13.84	800.93	-4.74	5.65	-5.85	0.12	0.00	-12.45
891.00	0.35	20.52	890.93	-4.08	5.84	-5.25	0.21	-0.20	7.42
978.00	0.53	52.78	977.92	-3.58	6.26	-4.86	0.34	0.21	37.08
1,068.00	0.62	56.03	1,067.92	-3.06	6.99	-4.51	0.11	0.10	3.61
1,154.00	0.88	64.64	1,153.91	-2.52	7.97	-4.19	0.33	0.30	10.01
1,241.00	0.62	72.55	1,240.90	-2.09	9.03	-4.00	0.32	-0.30	9.09
1,327.00	0.62	100.59	1,326.90	-2.04	9.93	-4.14	0.35	0.00	32.60
1,414.00	0.62	108.50	1,413.89	-2.27	10.84	-4.57	0.10	0.00	9.09
1,505.00	0.84	105.87	1,504.89	-2.61	11.95	-5.14	0.24	0.24	-2.89
1,593.00	1.19	96.29	1,592.87	-2.89	13.48	-5.75	0.44	0.40	-10.89
1,680.00	1.45	94.79	1,679.85	-3.08	15.47	-6.37	0.30	0.30	-1.72
1,767.00	1.41	95.49	1,766.82	-3.27	17.63	-7.02	0.05	-0.05	0.80
1,841.00	1.49	91.80	1,840.80	-3.39	19.50	-7.55	0.17	0.11	-4.99
1,993.00	1.05	88.49	1,992.76	-3.41	22.87	-8.30	0.29	-0.29	-2.18
2,087.00	1.64	351.60	2,086.74	-2.06	23.53	-7.12	2.18	0.63	-103.07
2,113.28	2.86	340.44	2,113.00	-1.07	23.26	-6.10	4.92	4.65	-42.46
Rustler									
2,181.00	6.15	332.79	2,180.51	3.75	21.03	-0.91	4.92	4.85	-11.30
2,276.00	6.60	333.50	2,274.92	13.16	16.27	9.31	0.48	0.47	0.75
2,371.00	8.03	320.71	2,369.15	23.19	9.63	20.54	2.27	1.51	-13.46
2,465.00	10.00	314.24	2,461.98	33.96	-0.38	33.23	2.35	2.10	-6.88
2,560.00	10.46	314.62	2,555.47	45.77	-12.42	47.38	0.49	0.48	0.40
2,654.00	10.52	315.95	2,647.90	57.93	-24.46	61.87	0.27	0.06	1.41
2,749.00	10.90	314.88	2,741.25	70.51	-36.86	76.83	0.45	0.40	-1.13
2,938.00	11.44	314.33	2,926.67	96.21	-62.93	107.59	0.29	0.29	-0.29
3,033.00	11.75	315.63	3,019.73	109.71	-76.43	123.70	0.43	0.33	1.37
3,127.00	12.00	316.09	3,111.72	123.59	-89.90	140.17	0.28	0.27	0.49
3,222.00	12.01	316.02	3,204.64	137.82	-103.61	157.04	0.02	0.01	-0.07
3,252.00	11.76	314.26	3,234.00	142.20	-107.97	162.26	1.47	-0.84	-5.85
Yates									
3,316.00	11.26	310.27	3,296.71	150.79	-117.41	172.70	1.47	-0.78	-6.24
3,411.00	10.34	302.74	3,390.03	161.40	-131.66	186.15	1.77	-0.97	-7.93
3,505.00	10.47	302.39	3,482.49	170.53	-145.96	198.18	0.15	0.14	-0.37
3,600.00	10.59	302.97	3,575.89	179.91	-160.58	210.50	0.17	0.13	0.61
3,695.00	10.60	302.43	3,669.27	189.35	-175.28	222.91	0.11	0.01	-0.57
3,789.00	10.81	302.85	3,761.63	198.76	-189.98	235.30	0.24	0.22	0.45
3,883.00	11.03	304.09	3,853.93	208.59	-204.83	248.11	0.34	0.23	1.32
3,978.00	10.94	303.84	3,947.19	218.70	-219.84	261.24	0.11	-0.09	-0.26
4,072.00	11.13	305.47	4,039.45	228.93	-234.64	274.45	0.39	0.20	1.73
4,166.00	11.41	304.76	4,131.64	239.50	-249.67	288.03	0.33	0.30	-0.76
4,260.00	9.88	309.45	4,224.02	249.92	-263.54	301.22	1.87	-1.63	4.99
4,354.00	10.04	308.18	4,316.60	260.11	-276.21	313.91	0.29	0.17	-1.35
4,448.00	9.09	311.64	4,409.29	270.11	-288.20	326.28	1.18	-1.01	3.68
4,542.00	7.55	311.64	4,502.30	279.15	-298.36	337.31	1.64	-1.64	0.00

SDT

Survey Report

Company:	Ovintiv USA Inc.	Local Co-ordinate Reference:	Well UL Wash Park 2A 1HF
Project:	Andrews County, TX (TNC NAD 27)	TVD Reference:	3012+25 @ 3037.00usft (H&P 379)
Site:	UL Wash Park Pad	MD Reference:	3012+25 @ 3037.00usft (H&P 379)
Well:	UL Wash Park 2A 1HF	North Reference:	Grid
Wellbore:	OH	Survey Calculation Method:	Minimum Curvature
Design:	OH	Database:	EDM 5000 Multi User Db

Survey									
Measured Depth (usft)	Inclination (°)	Azimuth (°)	Vertical Depth (usft)	+N/-S (usft)	+E/-W (usft)	Vertical Section (usft)	Dogleg Rate (°/100usft)	Build Rate (°/100usft)	Turn Rate (°/100usft)
4,637.00	7.60	315.03	4,596.47	287.74	-307.46	347.67	0.47	0.05	3.57
4,731.00	7.25	314.27	4,689.69	296.28	-316.10	357.89	0.39	-0.37	-0.81
4,825.00	7.03	317.39	4,782.96	304.65	-324.25	367.83	0.47	-0.23	3.32
4,899.60	7.00	314.77	4,857.00	311.21	-330.56	375.60	0.43	-0.05	-3.52
San Andres									
4,919.00	6.99	314.08	4,876.25	312.86	-332.25	377.58	0.43	-0.03	-3.54
5,013.00	6.62	313.21	4,969.59	320.55	-340.31	386.84	0.41	-0.39	-0.93
5,108.00	7.26	314.93	5,063.90	328.54	-348.55	396.43	0.71	0.67	1.81
5,202.00	9.02	319.21	5,156.95	338.32	-357.57	407.93	1.98	1.87	4.55
5,296.00	9.28	320.11	5,249.75	349.71	-367.24	421.15	0.32	0.28	0.96
5,390.00	9.26	322.56	5,342.52	361.53	-376.70	434.75	0.42	-0.02	2.61
5,484.00	9.28	319.98	5,435.30	373.34	-386.17	448.33	0.44	0.02	-2.74
5,578.00	9.77	318.98	5,528.00	385.16	-396.28	462.07	0.55	0.52	-1.06
5,673.00	9.59	317.77	5,621.65	397.10	-406.89	476.03	0.29	-0.19	-1.27
5,767.00	9.58	320.33	5,714.34	408.92	-417.15	489.79	0.45	-0.01	2.72
5,861.00	9.57	318.75	5,807.03	420.82	-427.29	503.61	0.28	-0.01	-1.68
5,955.00	9.85	320.26	5,899.68	432.87	-437.58	517.62	0.40	0.30	1.61
6,049.00	9.48	320.68	5,992.34	445.05	-447.63	531.68	0.40	-0.39	0.45
6,143.00	9.26	319.70	6,085.09	456.80	-457.43	545.28	0.29	-0.23	-1.04
6,237.00	9.27	319.74	6,177.86	468.35	-467.21	558.68	0.01	0.01	0.04
6,246.26	9.24	319.81	6,187.00	469.48	-468.17	560.00	0.39	-0.37	0.71
Glorieta									
6,332.00	8.92	320.44	6,271.67	479.87	-476.85	572.01	0.39	-0.37	0.74
6,426.00	9.19	318.53	6,364.50	491.11	-486.46	585.08	0.43	0.29	-2.03
6,521.00	8.72	321.60	6,458.34	502.44	-495.96	598.20	0.71	-0.49	3.23
6,617.00	8.49	330.47	6,553.26	514.31	-503.97	611.53	1.40	-0.24	9.24
6,712.00	7.35	325.98	6,647.36	525.45	-510.83	623.89	1.36	-1.20	-4.73
6,807.00	7.94	324.19	6,741.51	535.80	-518.06	635.57	0.67	0.62	-1.88
6,903.00	6.66	318.20	6,836.73	545.33	-525.65	646.52	1.55	-1.33	-6.24
6,998.00	5.04	304.54	6,931.24	551.80	-532.76	654.39	2.24	-1.71	-14.38
7,092.00	3.42	291.71	7,024.98	555.18	-538.77	658.99	1.99	-1.72	-13.65
7,120.05	2.50	284.63	7,053.00	555.65	-540.14	659.74	3.52	-3.28	-25.24
Clearfork									
7,187.00	1.07	214.64	7,119.92	555.50	-541.91	659.98	3.52	-2.14	-104.54
7,254.00	0.60	208.63	7,186.91	554.68	-542.43	659.29	0.71	-0.70	-8.97
7,425.00	1.01	139.02	7,357.90	552.75	-541.87	657.29	0.57	0.24	-40.71
7,519.00	1.11	127.86	7,451.88	551.57	-540.61	655.86	0.24	0.11	-11.87
7,614.00	0.97	120.37	7,546.86	550.60	-539.19	654.61	0.21	-0.15	-7.88
7,709.00	1.03	109.48	7,641.85	549.91	-537.69	653.60	0.21	0.06	-11.46
7,803.00	1.78	119.44	7,735.82	548.91	-535.62	652.18	0.84	0.80	10.60
7,897.00	1.84	113.10	7,829.77	547.60	-532.96	650.32	0.22	0.06	-6.74
7,992.00	1.64	111.45	7,924.73	546.50	-530.30	648.67	0.22	-0.21	-1.74
8,086.00	1.65	106.92	8,018.69	545.62	-527.75	647.26	0.14	0.01	-4.82

SDT

Survey Report

Company:	Ovintiv USA Inc.	Local Co-ordinate Reference:	Well UL Wash Park 2A 1HF
Project:	Andrews County, TX (TNC NAD 27)	TVD Reference:	3012+25 @ 3037.00usft (H&P 379)
Site:	UL Wash Park Pad	MD Reference:	3012+25 @ 3037.00usft (H&P 379)
Well:	UL Wash Park 2A 1HF	North Reference:	Grid
Wellbore:	OH	Survey Calculation Method:	Minimum Curvature
Design:	OH	Database:	EDM 5000 Multi User Db

Survey									
Measured Depth (usft)	Inclination (°)	Azimuth (°)	Vertical Depth (usft)	+N/-S (usft)	+E/-W (usft)	Vertical Section (usft)	Dogleg Rate (°/100usft)	Build Rate (°/100usft)	Turn Rate (°/100usft)
8,181.00	1.84	110.90	8,113.65	544.68	-525.02	645.74	0.24	0.20	4.19
8,275.00	0.17	38.78	8,207.63	544.25	-523.52	645.00	1.91	-1.78	-76.72
8,370.00	1.21	340.99	8,302.62	545.30	-523.76	646.08	1.19	1.09	-60.83
8,464.00	1.06	347.16	8,396.61	547.09	-524.27	647.94	0.21	-0.16	6.56
8,558.00	0.83	332.34	8,490.59	548.54	-524.78	649.47	0.36	-0.24	-15.77
8,635.41	0.73	320.20	8,568.00	549.42	-525.36	650.44	0.25	-0.13	-15.68
U/Spraberry									
8,652.00	0.71	317.18	8,584.58	549.57	-525.50	650.63	0.25	-0.10	-18.20
8,747.00	0.52	321.85	8,679.58	550.34	-526.16	651.52	0.21	-0.20	4.92
8,841.00	0.04	147.11	8,773.58	550.65	-526.41	651.88	0.60	-0.51	-185.89
8,884.42	0.31	139.04	8,817.00	550.55	-526.32	651.76	0.63	0.63	-18.60
MSB									
8,935.00	0.63	138.44	8,867.58	550.24	-526.05	651.39	0.63	0.63	-1.18
9,029.00	1.21	123.67	8,961.56	549.30	-524.88	650.23	0.66	0.62	-15.71
9,123.00	3.57	16.90	9,055.50	551.55	-523.20	652.06	4.35	2.51	-113.59
9,172.79	8.69	341.60	9,105.00	556.60	-523.94	657.15	12.31	10.28	-70.90
Jo Mill									
9,217.00	13.93	333.97	9,148.34	564.56	-527.33	665.66	12.31	11.86	-17.26
9,311.00	20.41	349.49	9,238.15	590.89	-535.30	693.08	8.39	6.89	16.51
9,406.00	26.56	356.72	9,325.26	628.42	-539.54	730.64	7.14	6.47	7.61
9,482.44	31.77	351.28	9,392.00	665.40	-543.57	767.62	7.64	6.81	-7.12
LSB									
9,500.00	32.99	350.25	9,406.83	674.68	-545.08	777.00	7.64	6.97	-5.85
9,594.00	40.34	352.57	9,482.18	730.15	-553.36	832.95	7.96	7.82	2.47
9,689.00	49.95	354.21	9,549.11	796.98	-561.02	899.84	10.19	10.12	1.73
9,783.00	56.26	349.12	9,605.54	871.26	-572.05	974.74	7.98	6.71	-5.41
9,821.80	59.98	347.16	9,626.03	903.49	-578.83	1,007.68	10.51	9.59	-5.06
60° INC @ 9821.80' MD									
9,877.00	65.32	344.60	9,651.38	951.01	-590.81	1,056.66	10.51	9.67	-4.63
9,913.30	69.99	345.98	9,665.18	983.48	-599.33	1,090.21	13.35	12.87	3.81
70° INC @ 9913.30' MD									
9,971.00	77.44	348.03	9,681.35	1,037.41	-611.75	1,145.55	13.35	12.91	3.54
9,991.68	79.99	346.90	9,685.39	1,057.20	-616.15	1,165.83	13.47	12.35	-5.48
80° INC @ 9991.68' MD									
9,998.88	80.89	346.51	9,686.59	1,064.11	-617.79	1,172.92	13.47	12.37	-5.42
LL Crossing @ 9998.88' MD									
10,066.00	89.20	342.94	9,692.39	1,128.55	-635.40	1,239.65	13.47	12.39	-5.32
10,160.00	89.90	341.71	9,693.12	1,218.10	-663.94	1,333.27	1.51	0.74	-1.31
10,255.00	87.69	342.79	9,695.12	1,308.55	-692.89	1,427.85	2.59	-2.33	1.14
10,349.00	86.99	343.60	9,699.48	1,398.44	-720.04	1,521.49	1.14	-0.74	0.86
10,443.00	86.03	343.80	9,705.21	1,488.49	-746.37	1,615.11	1.04	-1.02	0.21
10,537.00	86.62	346.76	9,711.23	1,579.21	-770.20	1,708.84	3.20	0.63	3.15
10,596.65	86.14	346.72	9,715.00	1,637.16	-783.86	1,768.37	0.81	-0.81	-0.06
Dean									
10,631.00	85.86	346.70	9,717.40	1,670.50	-791.73	1,802.63	0.81	-0.81	-0.06

SDT

Survey Report

Company:	Ovintiv USA Inc.	Local Co-ordinate Reference:	Well UL Wash Park 2A 1HF
Project:	Andrews County, TX (TNC NAD 27)	TVD Reference:	3012+25 @ 3037.00usft (H&P 379)
Site:	UL Wash Park Pad	MD Reference:	3012+25 @ 3037.00usft (H&P 379)
Well:	UL Wash Park 2A 1HF	North Reference:	Grid
Wellbore:	OH	Survey Calculation Method:	Minimum Curvature
Design:	OH	Database:	EDM 5000 Multi User Db

Survey									
Measured Depth (usft)	Inclination (°)	Azimuth (°)	Vertical Depth (usft)	+N/-S (usft)	+E/-W (usft)	Vertical Section (usft)	Dogleg Rate (°/100usft)	Build Rate (°/100usft)	Turn Rate (°/100usft)
10,725.00	89.65	344.79	9,721.08	1,761.52	-814.86	1,896.49	4.51	4.03	-2.03
10,820.00	88.98	342.88	9,722.21	1,852.75	-841.30	1,991.29	2.13	-0.71	-2.01
10,915.00	88.61	342.77	9,724.21	1,943.50	-869.35	2,085.96	0.41	-0.39	-0.12
11,009.00	89.03	343.12	9,726.15	2,033.34	-896.91	2,179.65	0.58	0.45	0.37
11,103.00	89.03	342.83	9,727.74	2,123.21	-924.43	2,273.35	0.31	0.00	-0.31
11,197.00	88.22	344.77	9,730.00	2,213.45	-950.65	2,367.13	2.24	-0.86	2.06
11,290.00	88.89	347.37	9,732.34	2,303.67	-973.03	2,460.06	2.89	0.72	2.80
11,384.00	90.74	349.65	9,732.64	2,395.78	-991.75	2,554.04	3.12	1.97	2.43
11,478.00	90.43	350.10	9,731.68	2,488.31	-1,008.27	2,647.95	0.58	-0.33	0.48
11,572.00	89.90	350.03	9,731.41	2,580.90	-1,024.49	2,741.85	0.57	-0.56	-0.07
11,666.00	89.87	349.91	9,731.60	2,673.46	-1,040.86	2,835.76	0.13	-0.03	-0.13
11,760.00	89.29	350.00	9,732.29	2,766.02	-1,057.26	2,929.66	0.62	-0.62	0.10
11,854.00	90.38	350.78	9,732.56	2,858.70	-1,072.95	3,023.54	1.43	1.16	0.83
11,949.00	91.08	350.84	9,731.35	2,952.47	-1,088.12	3,118.37	0.74	0.74	0.06
12,043.00	91.28	348.53	9,729.42	3,044.93	-1,104.95	3,212.27	2.47	0.21	-2.46
12,136.00	91.98	347.47	9,726.77	3,135.85	-1,124.28	3,305.22	1.37	0.75	-1.14
12,231.00	93.15	348.12	9,722.52	3,228.61	-1,144.34	3,400.13	1.41	1.23	0.68
12,324.00	90.60	346.36	9,719.48	3,319.26	-1,164.87	3,493.06	3.33	-2.74	-1.89
12,419.00	90.91	344.76	9,718.22	3,411.24	-1,188.55	3,588.00	1.72	0.33	-1.68
12,513.00	90.85	344.83	9,716.78	3,501.94	-1,213.21	3,681.89	0.10	-0.06	0.07
12,607.00	91.19	343.85	9,715.11	3,592.44	-1,238.57	3,775.73	1.10	0.36	-1.04
12,702.00	92.06	343.61	9,712.41	3,683.59	-1,265.18	3,870.49	0.95	0.92	-0.25
12,796.00	90.27	345.06	9,710.50	3,774.08	-1,290.55	3,964.33	2.45	-1.90	1.54
12,890.00	89.76	348.18	9,710.48	3,865.52	-1,312.30	4,058.31	3.36	-0.54	3.32
12,985.00	89.54	348.28	9,711.06	3,958.52	-1,331.68	4,153.30	0.25	-0.23	0.11
13,079.00	89.79	347.81	9,711.61	4,050.48	-1,351.15	4,247.29	0.57	0.27	-0.50
13,173.00	90.10	347.90	9,711.70	4,142.37	-1,370.93	4,341.29	0.34	0.33	0.10
13,267.00	90.41	348.08	9,711.28	4,234.31	-1,390.49	4,435.28	0.38	0.33	0.19
13,361.00	90.57	348.47	9,710.48	4,326.35	-1,409.59	4,529.27	0.45	0.17	0.41
13,456.00	89.96	348.55	9,710.04	4,419.44	-1,428.51	4,624.25	0.65	-0.64	0.08
13,550.00	90.04	348.62	9,710.04	4,511.58	-1,447.12	4,718.23	0.11	0.09	0.07
13,644.00	89.87	348.72	9,710.11	4,603.75	-1,465.58	4,812.21	0.21	-0.18	0.11
13,738.00	89.15	348.68	9,710.91	4,695.93	-1,484.00	4,906.19	0.77	-0.77	-0.04
13,833.00	88.78	348.57	9,712.63	4,789.04	-1,502.73	5,001.15	0.41	-0.39	-0.12
13,927.00	88.95	349.03	9,714.49	4,881.24	-1,520.99	5,095.10	0.52	0.18	0.49
14,021.00	88.67	349.26	9,716.44	4,973.53	-1,538.69	5,189.04	0.39	-0.30	0.24
14,116.00	88.19	349.66	9,719.05	5,066.89	-1,556.06	5,283.95	0.66	-0.51	0.42
14,210.00	87.97	349.99	9,722.20	5,159.36	-1,572.66	5,377.82	0.42	-0.23	0.35
14,304.00	88.70	350.89	9,724.93	5,252.02	-1,588.26	5,471.65	1.23	0.78	0.96
14,398.00	90.18	348.03	9,725.85	5,344.42	-1,605.45	5,565.57	3.43	1.57	-3.04
14,492.00	90.29	346.02	9,725.46	5,436.01	-1,626.56	5,659.56	2.14	0.12	-2.14
14,586.00	91.56	345.21	9,723.94	5,527.05	-1,649.90	5,753.50	1.60	1.35	-0.86
14,681.00	91.70	345.72	9,721.24	5,618.97	-1,673.74	5,848.40	0.56	0.15	0.54
14,775.00	91.92	345.98	9,718.27	5,710.07	-1,696.71	5,942.32	0.36	0.23	0.28

SDT Survey Report

Company:	Ovintiv USA Inc.	Local Co-ordinate Reference:	Well UL Wash Park 2A 1HF
Project:	Andrews County, TX (TNC NAD 27)	TVD Reference:	3012+25 @ 3037.00usft (H&P 379)
Site:	UL Wash Park Pad	MD Reference:	3012+25 @ 3037.00usft (H&P 379)
Well:	UL Wash Park 2A 1HF	North Reference:	Grid
Wellbore:	OH	Survey Calculation Method:	Minimum Curvature
Design:	OH	Database:	EDM 5000 Multi User Db

Survey									
Measured Depth (usft)	Inclination (°)	Azimuth (°)	Vertical Depth (usft)	+N/-S (usft)	+E/-W (usft)	Vertical Section (usft)	Dogleg Rate (°/100usft)	Build Rate (°/100usft)	Turn Rate (°/100usft)
14,869.00	92.23	346.14	9,714.87	5,801.24	-1,719.34	6,036.23	0.37	0.33	0.17
14,963.00	91.47	345.20	9,711.83	5,892.27	-1,742.59	6,130.13	1.29	-0.81	-1.00
15,058.00	92.79	346.92	9,708.30	5,984.40	-1,765.46	6,225.04	2.28	1.39	1.81
15,152.00	89.62	346.62	9,706.33	6,075.88	-1,786.96	6,319.00	3.39	-3.37	-0.32
15,246.00	90.01	345.88	9,706.63	6,167.18	-1,809.31	6,412.97	0.89	0.41	-0.79
15,285.85	88.60	345.35	9,707.11	6,205.78	-1,819.20	6,452.80	3.78	-3.54	-1.33
LL Crossing @ 15285.85' MD									
15,340.00	86.68	344.63	9,709.34	6,258.03	-1,833.22	6,506.85	3.78	-3.54	-1.33
15,434.00	85.98	344.68	9,715.36	6,348.50	-1,858.04	6,600.55	0.75	-0.74	0.05
15,529.00	85.95	344.51	9,722.05	6,439.86	-1,883.21	6,695.19	0.18	-0.03	-0.18
15,623.00	88.84	345.20	9,726.32	6,530.49	-1,907.74	6,788.99	3.16	3.07	0.73
15,811.00	87.86	346.01	9,731.73	6,712.51	-1,954.46	6,976.81	0.68	-0.52	0.43
15,905.00	87.30	346.60	9,735.70	6,803.75	-1,976.70	7,070.71	0.86	-0.60	0.63
15,999.00	89.85	346.54	9,738.04	6,895.14	-1,998.52	7,164.66	2.71	2.71	-0.06
16,094.00	90.94	346.58	9,737.38	6,987.54	-2,020.60	7,259.64	1.15	1.15	0.04
16,188.00	91.22	346.28	9,735.61	7,078.90	-2,042.65	7,353.61	0.44	0.30	-0.32
16,283.00	91.64	346.80	9,733.24	7,171.26	-2,064.76	7,448.57	0.70	0.44	0.55
16,377.00	92.23	347.01	9,730.07	7,262.76	-2,086.04	7,542.51	0.67	0.63	0.22
16,472.00	90.46	347.13	9,727.84	7,355.33	-2,107.29	7,637.48	1.87	-1.86	0.13
16,567.00	89.06	346.89	9,728.23	7,447.89	-2,128.65	7,732.47	1.50	-1.47	-0.25
16,661.00	89.12	347.64	9,729.73	7,539.57	-2,149.36	7,826.46	0.80	0.06	0.80
16,756.00	89.90	347.76	9,730.54	7,632.38	-2,169.60	7,921.45	0.83	0.82	0.13
16,850.00	90.91	347.78	9,729.88	7,724.24	-2,189.51	8,015.45	1.07	1.07	0.02
16,945.00	91.36	347.62	9,727.99	7,817.05	-2,209.75	8,110.43	0.50	0.47	-0.17
17,038.00	91.05	347.53	9,726.04	7,907.85	-2,229.75	8,203.41	0.35	-0.33	-0.10
17,133.00	91.47	346.94	9,723.95	8,000.48	-2,250.74	8,298.38	0.76	0.44	-0.62
17,227.00	91.13	346.27	9,721.82	8,091.89	-2,272.51	8,392.35	0.80	-0.36	-0.71
17,322.00	91.67	346.52	9,719.49	8,184.20	-2,294.85	8,487.30	0.63	0.57	0.26
17,416.00	89.96	346.38	9,718.16	8,275.57	-2,316.87	8,581.28	1.83	-1.82	-0.15
17,605.00	91.16	346.14	9,716.31	8,459.15	-2,361.76	8,770.22	0.65	0.63	-0.13
17,699.00	92.79	345.55	9,713.07	8,550.24	-2,384.73	8,864.13	1.84	1.73	-0.63
17,794.00	88.14	345.77	9,712.30	8,642.25	-2,408.25	8,959.05	4.90	-4.89	0.23
17,889.00	88.45	346.60	9,715.13	8,734.46	-2,430.93	9,053.99	0.93	0.33	0.87
17,927.82	88.37	346.69	9,716.20	8,772.22	-2,439.89	9,092.79	0.31	-0.21	0.23
LL Crossing @ 17927.82' MD									
17,986.00	88.25	346.82	9,717.92	8,828.82	-2,453.21	9,150.94	0.31	-0.21	0.23
18,080.00	88.39	347.10	9,720.68	8,920.36	-2,474.41	9,244.89	0.33	0.15	0.30
18,174.00	88.42	346.91	9,723.29	9,011.92	-2,495.54	9,338.85	0.20	0.03	-0.20
18,268.00	88.05	346.64	9,726.19	9,103.38	-2,517.04	9,432.80	0.49	-0.39	-0.29
18,362.00	89.73	348.94	9,728.01	9,195.23	-2,536.91	9,526.77	3.03	1.79	2.45
18,456.00	90.66	349.01	9,727.69	9,287.49	-2,554.89	9,620.74	0.99	0.99	0.07
18,550.00	90.38	347.75	9,726.84	9,379.56	-2,573.82	9,714.72	1.37	-0.30	-1.34
18,644.00	89.54	346.03	9,726.90	9,471.11	-2,595.14	9,808.71	2.04	-0.89	-1.83

SDT Survey Report

Company:	Ovintiv USA Inc.	Local Co-ordinate Reference:	Well UL Wash Park 2A 1HF
Project:	Andrews County, TX (TNC NAD 27)	TVD Reference:	3012+25 @ 3037.00usft (H&P 379)
Site:	UL Wash Park Pad	MD Reference:	3012+25 @ 3037.00usft (H&P 379)
Well:	UL Wash Park 2A 1HF	North Reference:	Grid
Wellbore:	OH	Survey Calculation Method:	Minimum Curvature
Design:	OH	Database:	EDM 5000 Multi User Db

Survey									
Measured Depth (usft)	Inclination (°)	Azimuth (°)	Vertical Depth (usft)	+N/-S (usft)	+E/-W (usft)	Vertical Section (usft)	Dogleg Rate (°/100usft)	Build Rate (°/100usft)	Turn Rate (°/100usft)
18,739.00	89.06	346.11	9,728.06	9,563.30	-2,618.01	9,903.68	0.51	-0.51	0.08
18,833.00	89.71	348.52	9,729.07	9,655.00	-2,638.65	9,997.66	2.66	0.69	2.56
18,927.00	89.73	349.62	9,729.53	9,747.29	-2,656.47	10,091.62	1.17	0.02	1.17
19,021.00	90.35	350.41	9,729.46	9,839.86	-2,672.77	10,185.53	1.07	0.66	0.84
19,115.00	90.15	349.47	9,729.05	9,932.42	-2,689.19	10,279.44	1.02	-0.21	-1.00
19,209.00	90.63	349.05	9,728.41	10,024.77	-2,706.71	10,373.39	0.68	0.51	-0.45
19,248.37	90.84	349.11	9,727.91	10,063.42	-2,714.16	10,412.74	0.55	0.53	0.15
LL Crossing @ 19248.37' MD									
19,303.00	91.13	349.19	9,726.97	10,117.07	-2,724.45	10,467.34	0.55	0.53	0.15
19,397.00	91.58	348.71	9,724.75	10,209.30	-2,742.46	10,561.28	0.70	0.48	-0.51
19,491.00	92.03	348.32	9,721.79	10,301.37	-2,761.16	10,655.21	0.63	0.48	-0.41
19,585.00	90.41	348.31	9,719.79	10,393.40	-2,780.20	10,749.18	1.72	-1.72	-0.01
19,680.00	90.21	348.67	9,719.27	10,486.49	-2,799.15	10,844.16	0.43	-0.21	0.38
19,774.00	90.18	349.53	9,718.95	10,578.79	-2,816.93	10,938.12	0.92	-0.03	0.91
19,867.00	90.46	350.12	9,718.43	10,670.32	-2,833.36	11,031.04	0.70	0.30	0.63
19,962.00	89.37	349.50	9,718.57	10,763.82	-2,850.16	11,125.96	1.32	-1.15	-0.65
20,056.00	89.06	348.97	9,719.86	10,856.16	-2,867.72	11,219.90	0.65	-0.33	-0.56
20,150.00	88.50	349.25	9,721.86	10,948.45	-2,885.47	11,313.84	0.67	-0.60	0.30
20,244.00	87.86	348.72	9,724.85	11,040.67	-2,903.42	11,407.76	0.88	-0.68	-0.56
20,339.00	87.46	348.28	9,728.73	11,133.68	-2,922.35	11,502.66	0.63	-0.42	-0.46
20,433.00	88.73	348.49	9,731.85	11,225.70	-2,941.26	11,596.60	1.37	1.35	0.22
20,527.00	88.61	348.13	9,734.03	11,317.73	-2,960.30	11,690.56	0.40	-0.13	-0.38
20,569.11	88.41	347.91	9,735.13	11,358.91	-2,969.04	11,732.66	0.71	-0.47	-0.53
LL Crossing @ 20569.11' MD									
20,621.00	88.17	347.63	9,736.67	11,409.60	-2,980.03	11,784.52	0.71	-0.47	-0.53
20,715.00	89.65	348.39	9,738.46	11,501.53	-2,999.56	11,878.50	1.77	1.57	0.81
20,810.00	89.85	348.48	9,738.88	11,594.60	-3,018.60	11,973.48	0.23	0.21	0.09
20,904.00	90.15	347.99	9,738.88	11,686.62	-3,037.77	12,067.47	0.61	0.32	-0.52
20,998.00	89.93	347.33	9,738.81	11,778.45	-3,057.86	12,161.47	0.74	-0.23	-0.70
21,092.00	89.37	347.54	9,739.39	11,870.20	-3,078.30	12,255.47	0.64	-0.60	0.22
21,187.00	88.89	347.23	9,740.83	11,962.89	-3,099.05	12,350.46	0.60	-0.51	-0.33
21,281.00	88.67	347.19	9,742.83	12,054.54	-3,119.86	12,444.44	0.24	-0.23	-0.04
21,375.00	88.56	347.78	9,745.10	12,146.28	-3,140.22	12,538.41	0.64	-0.12	0.63
21,469.00	88.61	348.06	9,747.42	12,238.17	-3,159.88	12,632.38	0.30	0.05	0.30
21,563.00	88.11	347.37	9,750.11	12,329.98	-3,179.88	12,726.33	0.91	-0.53	-0.73
21,657.00	90.29	347.39	9,751.43	12,421.69	-3,200.41	12,820.32	2.32	2.32	0.02
21,752.00	91.33	347.41	9,750.08	12,514.39	-3,221.13	12,915.31	1.09	1.09	0.02
21,846.00	91.67	347.16	9,747.62	12,606.06	-3,241.81	13,009.28	0.45	0.36	-0.27
21,940.00	92.40	347.04	9,744.28	12,697.63	-3,262.79	13,103.21	0.79	0.78	-0.13
22,034.00	92.65	346.67	9,740.14	12,789.07	-3,284.14	13,197.12	0.47	0.27	-0.39
22,128.00	92.26	346.39	9,736.12	12,880.40	-3,306.02	13,291.02	0.51	-0.41	-0.30
22,222.00	93.63	346.46	9,731.29	12,971.66	-3,328.05	13,384.88	1.46	1.46	0.07
22,316.00	91.92	345.84	9,726.74	13,062.81	-3,350.53	13,478.74	1.93	-1.82	-0.66
22,410.00	92.31	345.82	9,723.27	13,153.89	-3,373.52	13,572.64	0.42	0.41	-0.02

SDT Survey Report

Company:	Ovintiv USA Inc.	Local Co-ordinate Reference:	Well UL Wash Park 2A 1HF
Project:	Andrews County, TX (TNC NAD 27)	TVD Reference:	3012+25 @ 3037.00usft (H&P 379)
Site:	UL Wash Park Pad	MD Reference:	3012+25 @ 3037.00usft (H&P 379)
Well:	UL Wash Park 2A 1HF	North Reference:	Grid
Wellbore:	OH	Survey Calculation Method:	Minimum Curvature
Design:	OH	Database:	EDM 5000 Multi User Db

Survey										
Measured Depth (usft)	Inclination (°)	Azimuth (°)	Vertical Depth (usft)	+N/-S (usft)	+E/-W (usft)	Vertical Section (usft)	Dogleg Rate (°/100usft)	Build Rate (°/100usft)	Turn Rate (°/100usft)	
22,505.00	89.87	346.77	9,721.46	13,246.16	-3,396.02	13,667.59	2.76	-2.57	1.00	
22,599.00	90.41	346.70	9,721.23	13,337.65	-3,417.59	13,761.59	0.58	0.57	-0.07	
22,693.00	90.35	346.72	9,720.61	13,429.13	-3,439.20	13,855.58	0.07	-0.06	0.02	
22,787.00	90.52	346.73	9,719.89	13,520.62	-3,460.79	13,949.57	0.18	0.18	0.01	
22,881.00	90.85	346.45	9,718.77	13,612.05	-3,482.58	14,043.55	0.46	0.35	-0.30	
22,976.00	90.57	346.22	9,717.59	13,704.35	-3,505.03	14,138.52	0.38	-0.29	-0.24	
23,070.00	90.60	345.95	9,716.63	13,795.59	-3,527.63	14,232.49	0.29	0.03	-0.29	
23,143.00	90.13	346.13	9,716.17	13,866.43	-3,545.24	14,305.47	0.69	-0.64	0.25	
23,203.00	90.13	346.13	9,716.03	13,924.68	-3,559.62	14,365.45	0.00	0.00	0.00	
BHL @ 23203' MD										

Design Targets									
Target Name	Dip Angle (°)	Dip Dir. (°)	TVD (usft)	+N/-S (usft)	+E/-W (usft)	Northing (usft)	Easting (usft)	Latitude	Longitude
- hit/miss target									
- Shape									
WP 1HF SHL	0.00	0.00	0.00	0.01	0.00	304,738.00	514,016.00	32.410654	-102.316727
- actual wellpath misses target center by 0.01usft at 0.00usft MD (0.00 TVD, 0.00 N, 0.00 E)									
- Point									
WP 1HF PBHL	0.00	0.00	9,677.00	13,927.01	-3,556.00	318,665.00	510,460.00	32.448449	-102.330311
- actual wellpath misses target center by 39.27usft at 23203.00usft MD (9716.03 TVD, 13924.68 N, -3559.62 E)									
- Point									
WP 1HF BHL	0.00	360.00	9,716.03	13,924.68	-3,559.62	318,662.66	510,456.38	32.448442	-102.330323
- actual wellpath hits target center									
- Point									

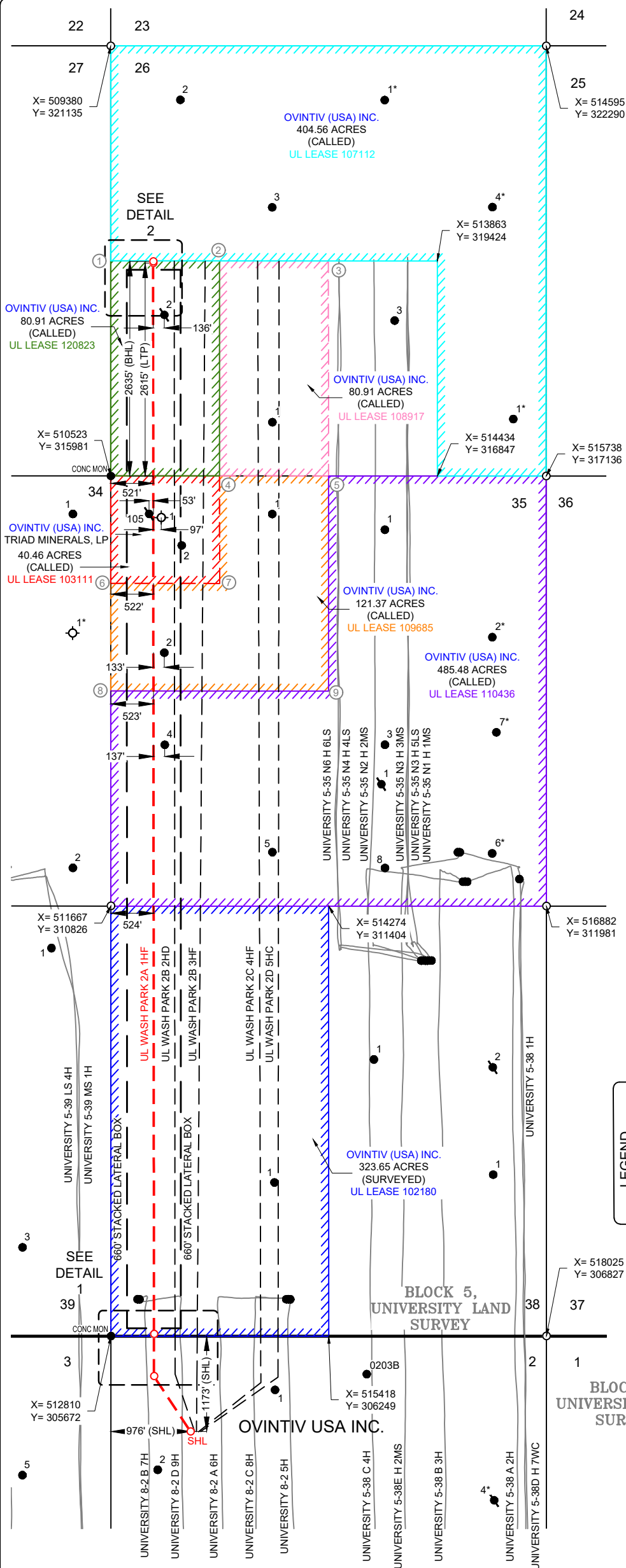
Formations						
Measured Depth (usft)	Vertical Depth (usft)	Name	Lithology	Dip (°)	Dip Direction (°)	
2,113.28	2,113.00	Rustler				
3,252.00	3,234.00	Yates				
4,899.60	4,857.00	San Andres				
6,246.26	6,187.00	Glorieta				
7,120.05	7,053.00	Clearfork				
8,635.41	8,568.00	U/Spraberry				
8,884.42	8,817.00	MSB				
9,172.79	9,105.00	Jo Mill				
9,482.44	9,392.00	LSB				
10,596.65	9,715.00	Dean				

SDT
Survey Report

Company:	Ovintiv USA Inc.	Local Co-ordinate Reference:	Well UL Wash Park 2A 1HF
Project:	Andrews County, TX (TNC NAD 27)	TVD Reference:	3012+25 @ 3037.00usft (H&P 379)
Site:	UL Wash Park Pad	MD Reference:	3012+25 @ 3037.00usft (H&P 379)
Well:	UL Wash Park 2A 1HF	North Reference:	Grid
Wellbore:	OH	Survey Calculation Method:	Minimum Curvature
Design:	OH	Database:	EDM 5000 Multi User Db

Design Annotations				
Measured Depth (usft)	Vertical Depth (usft)	Local Coordinates		Comment
		+N/-S (usft)	+E/-W (usft)	
9,821.80	9,626.03	903.49	-578.83	60° INC @ 9821.80' MD
9,913.30	9,665.18	983.48	-599.33	70° INC @ 9913.30' MD
9,991.68	9,685.39	1,057.20	-616.15	80° INC @ 9991.68' MD
9,998.88	9,686.59	1,064.11	-617.79	LL Crossing @ 9998.88' MD
15,285.85	9,707.11	6,205.78	-1,819.20	LL Crossing @ 15285.85' MD
17,927.82	9,716.20	8,772.22	-2,439.89	LL Crossing @ 17927.82' MD
19,248.37	9,727.91	10,063.42	-2,714.16	LL Crossing @ 19248.37' MD
20,569.11	9,735.13	11,358.91	-2,969.04	LL Crossing @ 20569.11' MD
23,203.00	9,716.03	13,924.68	-3,559.62	BHL @ 23203' MD

Checked By: _____	Approved By: _____	Date: _____
-------------------	--------------------	-------------



COORDINATES	
1	X= 509951 Y= 318558
2	X= 511255 Y= 318847
3	X= 512559 Y= 319135
4	X= 511827 Y= 316270
5	X= 513131 Y= 316558
6	X= 510809 Y= 314692
7	X= 512113 Y= 314981
8	X= 511095 Y= 313404
9	X= 513702 Y= 313981

EFFECTIVE LATERAL	
UL LEASE 120823	2614.59'
UL LEASE 103111	1319.97'
UL LEASE 109685	1319.97'
UL LEASE 110436	2639.93'
UL LEASE 102180	5254.81'
FTP-LTP	13149.27'

EFFECTIVE LATERAL (FTP-LTP)	
AZ=347°27'34" 13149.27' (FTP-LTP)	
FTP-LTP	13149.27'

LEGEND	UL LEASE 120823 - 80.91 ACRES (CALLED)
	UL LEASE 108917 - 80.91 ACRES (CALLED)
	UL LEASE 103111 - 40.46 ACRES (CALLED)
	UL LEASE 109685 - 121.37 ACRES (CALLED)
	UL LEASE 110436 - 485.48 ACRES (CALLED)
	UL LEASE 102180 - 323.65 ACRES (CALLED)
	UL LEASE 107112 - 404.56 ACRES (CALLED)



SCALE: 1" = 1500'

0' 750' 1500'



LEASE NAME & WELL NO.:
UL WASH PARK 2A 1HF
TOPOGRAPHY & VEGETATION:
NATURAL MESQUITE PASTURE

NEAREST TOWN IN COUNTY:
±14.8 MILES NORTHEAST OF ANDREWS, TEXAS

LOCATION DESCRIPTION:

SHL/PP: SECTION 2, BLOCK 8,
UNIVERSITY LAND SURVEY

FTP: SECTION 38, BLOCK 5,
UNIVERSITY LAND SURVEY

LTP/BHL: SECTION 26, BLOCK 5,
UNIVERSITY LAND SURVEY

ANDREWS COUNTY, TEXAS

Surface Hole Location:

GROUND ELEVATION:

SHL Ground Elevation: 3012'

COORDINATES:

NAD 27 TX-NC ZONE:

X = 514016 Y = 304738

LAT.: N 32°24'38.36" LONG.: W 102°19'00.21"

LAT.: N 32.4106545 LONG.: W 102.3167256

SURVEY LINE PERPENDICULARS:

1173' FNL & 976' FWL (SEC. 2)

LEASE LINE PERPENDICULARS:

OFF LEASE

Penetration Point:

COORDINATES:

NAD 27 TX-NC ZONE:

X = 513432 Y = 305305

LAT.: N 32°24'43.70" LONG.: W 102°19'07.33"

LAT.: N 32.4121383 LONG.: W 102.3187018

SURVEY LINE PERPENDICULARS:

492' FNL & 528' FWL (SEC. 2)

LEASE LINE PERPENDICULARS:

OFF LEASE

First Take Point:

COORDINATES:

NAD 27 TX-NC ZONE:

X = 513319 Y = 305810

LAT.: N 32°24'48.64" LONG.: W 102°19'08.91"

LAT.: N 32.4135110 LONG.: W 102.3191405

SURVEY LINE PERPENDICULARS:

25' FSL & 527' FWL (SEC. 38)

LEASE LINE PERPENDICULARS:

25' FSL & 527' FWL

Last Take Point:

COORDINATES:

NAD 27 TX-NC ZONE:

X = 510464 Y = 318646

LAT.: N 32°26'54.23" LONG.: W 102°19'49.06"

LAT.: N 32.4483965 LONG.: W 102.3302941

SURVEY LINE PERPENDICULARS:

2615' FSL & 520' FWL (SEC. 26)

LEASE LINE PERPENDICULARS:

25' FNL & 520' FWL

Bottom Hole Location:

COORDINATES:

NAD 27 TX-NC ZONE:

X = 510460 Y = 318665

LAT.: N 32°26'54.42" LONG.: W 102°19'49.12"

LAT.: N 32.4484495 LONG.: W 102.3303110

SURVEY LINE PERPENDICULARS:

2635' FSL & 520' FWL (SEC. 26)

LEASE LINE PERPENDICULARS:

5' FNL & 520' FWL

LEGEND	Section Line
	Block Line
	Found Monument
	Calculated Corner

COGO: 762-107318 Surveyed: 06/13/22

Drawn By: EAH; 04/03/24

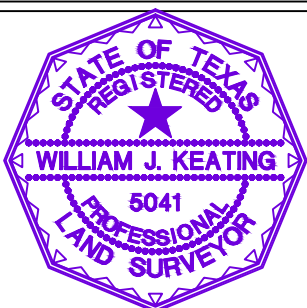
Revision: DCR (4) 05/22/24

All Coordinates are in NAD 27 TX-NC Zone unless otherwise noted.

CERTIFICATION:

This well location shown on this permit plat was surveyed on the ground under my direct supervision. This plat is for Texas Railroad Commission permit purpose only and should not be considered a boundary survey.

William J. Keating
Texas Reg. No. 5041



TOPOGRAPHIC
LOYALTY INNOVATION LEGACY

2903 NORTH BIG SPRING • MIDLAND, TEXAS 79705
TELEPHONE: (432) 682-1653 OR (800) 767-1653 • FAX (432) 682-1743
TEXAS FIRM REGISTRATION NO. 10042500
WWW.TOPOGRAPHIC.COM

Signature Date
5/30/24

Special Notes:

Lease Information provided by client

*Unable to locate these wells on the ground. The coordinates provided were plotted per R.R.C. data base and aerial imagery.

