



METEORITE
energy services

Meteorite Energy Services Survey Report

07 November, 2022

PERMIAN North

Andrews (TX Central Zone 4203)

University 7-20

University 7-20F 6H

OH

Survey: FINAL SURFACE SURVEYS (22MJ-426)

PIONEER

NATURAL RESOURCES



Company:	PERMIAN North	Local Co-ordinate Reference:	Well University 7-20F 6H
Project:	Andrews (TX Central Zone 4203)	TVD Reference:	KB @ GL @ 2963.0usft
Site:	University 7-20	MD Reference:	KB @ GL @ 2963.0usft
Well:	University 7-20F 6H	North Reference:	Grid
Wellbore:	OH	Survey Calculation Method:	Minimum Curvature
Design:	FINAL SURFACE SURVEYS (22MJ-426)	Database:	EDM 5000.1 Single User Db

Project	Andrews (TX Central Zone 4203)		
Map System:	US State Plane 1927 (Exact solution)	System Datum:	Mean Sea Level
Geo Datum:	NAD 1927 (NADCON CONUS)		
Map Zone:	Texas Central 4203		

Site		University 7-20			
Site Position:		Northing:	1,008,975.30 usft	Latitude:	32° 25' 35.419 N
From:	Map	Easting:	1,405,475.80 usft	Longitude:	102° 15' 34.961 W
Position Uncertainty:	0.0 usft	Slot Radius:	13-3/16"	Grid Convergence:	-0.99 °

Well	University 7-20F 6H					
Well Position	+N/-S	0.0 usft	Northing:	1,009,001.20 usft	Latitude:	32° 25' 35.692 N
	+E/-W	0.0 usft	Easting:	1,405,572.40 usft	Longitude:	102° 15' 33.840 W
Position Uncertainty		0.0 usft	Wellhead Elevation:	0.0 usft	Ground Level:	2,963.0 usft

Wellbore	OH				
Magnetics	Model Name	Sample Date	Declination (°)	Dip Angle (°)	Field Strength (nT)
	User Defined	10/25/2022	5.68	59.92	47,484

Design	FINAL SURFACE SURVEYS (22MJ-426)			
Audit Notes:				
Version:	1.0	Phase:	ACTUAL	Tie On Depth: 0.0
Vertical Section:	Depth From (TVD) (usft)	+N/-S (usft)	+E/-W (usft)	Direction (°)
	-7.0	0.0	0.0	72.21

Survey Program	Date	11/7/2022			
From (usft)	To (usft)	Survey (Wellbore)	Tool Name	Description	
117.0	1,963.0	FINAL SURFACE SURVEYS (22MJ-426) (MWD+IFR+MS	MWD + IFR + Multi Station	

Survey										
Measured Depth (usft)	Inclination (°)	Azimuth (°)	Vertical Depth (usft)	Subsea Depth (usft)	+N/-S (usft)	+E/-W (usft)	Vertical Section (usft)	Dogleg Rate (°/100usft)	Build Rate (°/100usft)	Turn Rate (°/100usft)
0.0	0.00	0.00	0.0	2,963.0	0.0	0.0	0.0	0.00	0.00	0.00
117.0	0.40	285.50	117.0	2,846.0	0.1	-0.4	-0.3	0.34	0.34	0.00
207.0	0.40	249.80	207.0	2,756.0	0.1	-1.0	-0.9	0.27	0.00	-39.67
295.0	0.30	305.70	295.0	2,668.0	0.1	-1.5	-1.4	0.39	-0.11	63.52
377.0	0.20	277.40	377.0	2,586.0	0.3	-1.8	-1.6	0.19	-0.12	-34.51
470.0	0.10	264.60	470.0	2,493.0	0.3	-2.0	-1.8	0.11	-0.11	-13.76
565.0	0.20	260.60	565.0	2,398.0	0.2	-2.3	-2.1	0.11	0.11	-4.21
660.0	0.30	107.60	660.0	2,303.0	0.1	-2.2	-2.1	0.51	0.11	-161.05
755.0	0.50	102.50	755.0	2,208.0	0.0	-1.6	-1.5	0.21	0.21	-5.37
848.0	0.60	98.50	848.0	2,115.0	-0.2	-0.7	-0.7	0.12	0.11	-4.30
943.0	0.60	109.70	943.0	2,020.0	-0.4	0.3	0.1	0.12	0.00	11.79
1,037.0	0.60	77.60	1,037.0	1,926.0	-0.5	1.2	1.0	0.35	0.00	-34.15
1,132.0	1.70	72.30	1,132.0	1,831.0	0.0	3.1	2.9	1.16	1.16	-5.58

Company:	PERMIAN North	Local Co-ordinate Reference:	Well University 7-20F 6H
Project:	Andrews (TX Central Zone 4203)	TVD Reference:	KB @ GL @ 2963.0usft
Site:	University 7-20	MD Reference:	KB @ GL @ 2963.0usft
Well:	University 7-20F 6H	North Reference:	Grid
Wellbore:	OH	Survey Calculation Method:	Minimum Curvature
Design:	FINAL SURFACE SURVEYS (22MJ-426)	Database:	EDM 5000.1 Single User Db

Survey										
Measured Depth (usft)	Inclination (°)	Azimuth (°)	Vertical Depth (usft)	Subsea Depth (usft)	+N/-S (usft)	+E/-W (usft)	Vertical Section (usft)	Dogleg Rate (°/100usft)	Build Rate (°/100usft)	Turn Rate (°/100usft)
1,225.0	2.40	73.50	1,224.9	1,738.1	1.0	6.2	6.2	0.75	0.75	1.29
1,319.0	2.80	74.10	1,318.8	1,644.2	2.2	10.3	10.5	0.43	0.43	0.64
1,413.0	3.00	75.10	1,412.7	1,550.3	3.5	14.9	15.3	0.22	0.21	1.06
1,506.0	3.00	74.60	1,505.6	1,457.4	4.7	19.6	20.1	0.03	0.00	-0.54
1,601.0	3.10	76.70	1,600.4	1,362.6	6.0	24.5	25.2	0.16	0.11	2.21
1,695.0	3.00	73.00	1,694.3	1,268.7	7.3	29.3	30.2	0.23	-0.11	-3.94
1,788.0	2.90	72.10	1,787.2	1,175.8	8.7	33.9	34.9	0.12	-0.11	-0.97
1,893.0	2.70	69.70	1,892.0	1,071.0	10.4	38.8	40.1	0.22	-0.19	-2.29
EXTRAPOLATION TO BIT										
1,963.0	2.70	69.70	1,962.0	1,001.0	11.5	41.8	43.4	0.00	0.00	0.00

Targets									
Target Name	Dip Angle (°)	Dip Dir. (°)	TVD (usft)	+N/-S (usft)	+E/-W (usft)	Northing (usft)	Easting (usft)	Latitude	Longitude
- hit/miss target									
- Shape									
University 7-20F 6H_FTI	0.00	360.00	9,526.0	413.2	1,287.5	1,009,414.40	1,406,859.90	32° 25' 39.999 N	102° 15' 18.907 W
- survey misses target center by 7676.4usft at 1963.0usft MD (1962.0 TVD, 11.5 N, 41.8 E)									
- Point									
University 7-20F 6H_BH	0.00	360.00	9,526.0	-14,754.7	5,099.8	994,246.50	1,410,672.20	32° 23' 10.609 N	102° 14' 31.411 W
- survey misses target center by 17344.7usft at 1963.0usft MD (1962.0 TVD, 11.5 N, 41.8 E)									
- Point									

Survey Annotations				
Measured Depth (usft)	Vertical Depth (usft)	Local Coordinates		Comment
		+N/-S (usft)	+E/-W (usft)	
1,963.0	1,962.0	11.5	41.8	EXTRAPOLATION TO BIT

Checked By: _____ Approved By: _____ Date: _____



Survey Certification

I, Bryson Kriz, an authorized employee of Meteorite Energy Services Inc., have verified the MWD surveys performed on University 7-20F 6H , between 11/5/2022 and 11/7/2022 , from 80' to 1963'.

The data are true, correct, complete and within the limitations of the tool used. This survey was conducted at the request of Pioneer Natural Resources for # 875280 (42-003-48493) drilled in Andrews county, Texas.

Sincerely
Meteorite Energy Services Inc.

A handwritten signature in black ink, appearing to be "Bryson A. Kriz", written over several horizontal lines.

Bryson A. Kriz B.a.GIS | Technical Operations Coordinator
METEORITE Energy Services
6310 S County Road 1273 Midland, Texas 79706 USA
Tel: (403)-667-1848
www.meteoriteenergyservices.com

April 2, 2023

Railroad Commission of Texas
Oil & Gas Division
P. O. Box 12967
Capitol Station
Austin, TX 78711
Attention: Pam Johns

Pioneer Natural Res. USA, Inc.
University 7-20F 6H
Spraberry (Trend Area)
Andrews Co., Texas
API #:42-003-48493-00

Enclosed, please find the original and one copy of the survey performed on the above referenced well by Baker Hughes INTEQ (P-5 No. 046289). Other information required by your office is as follows:

Name & Title of Surveyor	Drainhole Number	Survey Depths	Start Date	End Date	Type of Survey
Troy Hammett	Original Hole	1989' - 25019'	11/25/2022	12/8/2022	MWD

If any other information is required, please contact me at the address and telephone number above.

Sincerely,

Baker Hughes
North America Land Drilling

Enclosures

SO #: 111601633

State of Texas

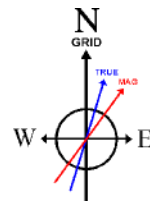
<h1 style="text-align: center;">Pioneer Natural Resources</h1>	
Location:	Andrews County, TX
Field:	University 7-20F No. 6H
Facility:	University 7-20F No. 6H
	Wellbore: University 7-20F No. 6H

Well Profile Data								
Design Comment	MD (ft)	Inc (°)	Az (°)	TVD (ft)	Local N (ft)	Local E (ft)	DLS (°/100ft)	VS (ft)
Tie On	1919.00	2.700	69.700	1918.04	10.40	38.75	0.22	-0.64
End of Tangent	2146.00	2.700	69.700	2144.78	14.11	48.78	0.00	-1.79
Build	2966.27	15.001	72.182	2953.73	53.45	168.42	1.50	-10.78
Hold	7251.42	15.001	72.182	7092.85	392.84	1224.37	0.00	-82.50
Drop	7751.45	0.000	165.888	7587.19	412.75	1286.34	3.00	-86.71
KOP	9143.28	0.000	165.888	8979.02	412.75	1286.34	0.00	-86.71
LP	10043.28	90.000	165.888	9551.98	-142.91	1426.03	10.00	486.25
TD/PBHL	25106.89	90.000	165.888	9551.98	-14751.91	5098.84	0.00	15549.85

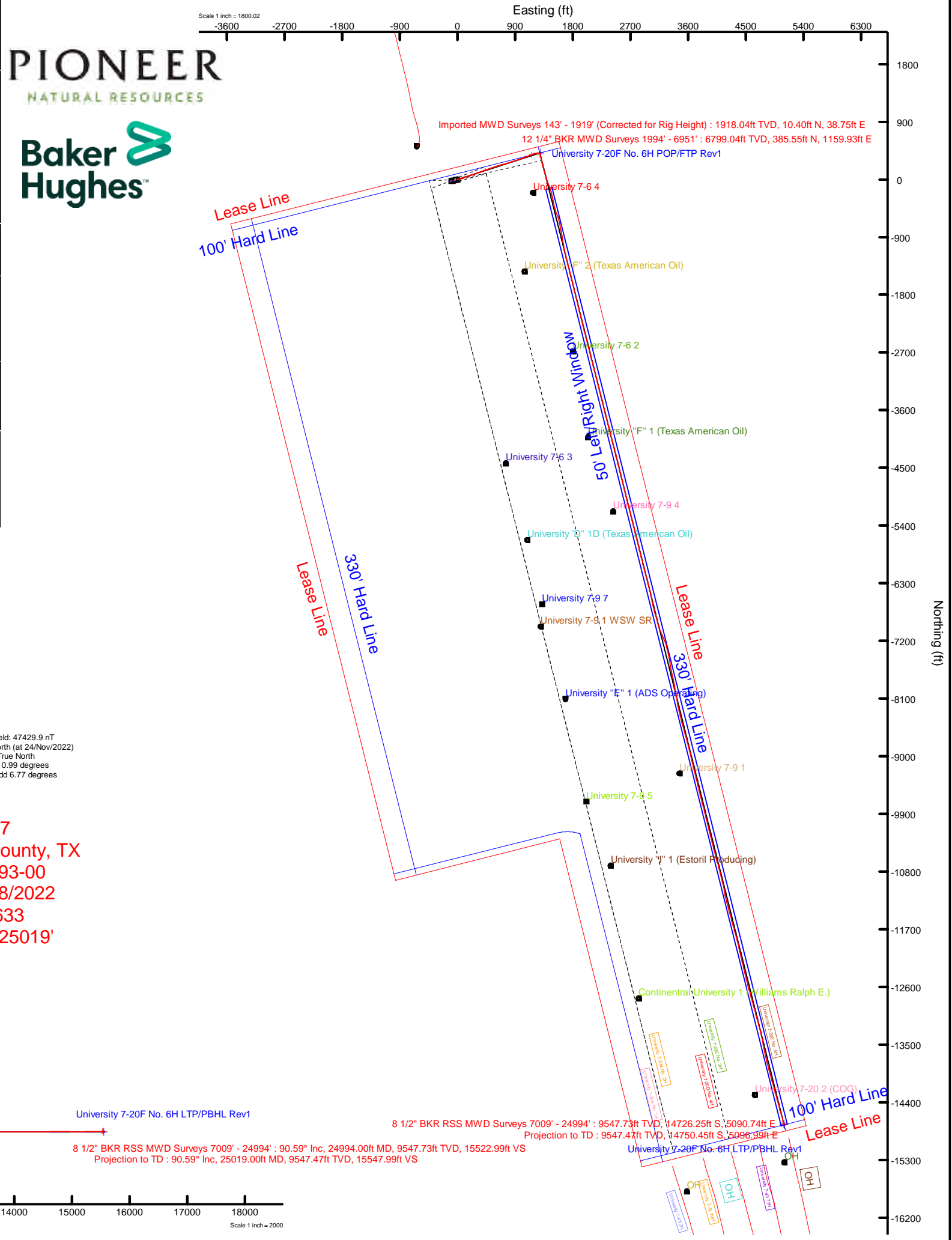
Bottom Hole Location									
MD (ft)	Inc (°)	Az (°)	TVD (ft)	Local N (ft)	Local E (ft)	Grid East (US ft)	Grid North (US ft)	Latitude	Longitude
25106.89	90.000	165.888	9551.98	-14751.91	5098.84	1410672.20	994246.50	32°23'10.6090"N	102°14'31.4106"W

Survey Program					
Start MD (ft)	End MD (ft)	Tool	Model	Log Name/Comment	Wellbore
26.00	1919.00	OWSG MWD rev2	OWSG MWD rev2 - Standard	MES MWD Surveys from 143' - 1919'	University 7-20F No. 6H
1919.00	1971.00	OWSG MWD rev2	OWSG MWD rev2+IFR1+MS		University 7-20F No. 6H
1971.00	7000.00	OWSG MWD rev2	OWSG MWD rev2+IFR1+MS		University 7-20F No. 6H
7000.00	9289.00	OWSG MWD rev2	OWSG MWD rev2+IFR1+MS		University 7-20F No. 6H
9289.00	25106.89	OWSG MWD rev2	OWSG MWD rev2+IFR1+MS		University 7-20F No. 6H

Location Information						
Facility Name			Grid East (US ft)	Grid North (US ft)	Latitude	Longitude
University 7-20 Pad			1405475.800	1008975.300	32°25'35.4190"N	102°15'34.9609"W
Slot	Local N (ft)	Local E (ft)	Grid East (US ft)	Grid North (US ft)	Latitude	Longitude
University 7-20F No. 6H	25.90	96.58	1405572.400	1009001.200	32°25'35.6917"N	102°15'33.8395"W
Rig: H&P 417 (KB) to Ground level (At Slot: University 7-20F No. 6H)					26ft	
Mean Sea Level to Ground level (At Slot: University 7-20F No. 6H)					-2963ft	
Rig: H&P 417 (KB) to Mean Sea Level					2989ft	



BGGM (1900.0 to 2023.0) Dip: 60.00° Field: 47429.9 nT
Magnetic North is 5.78 degrees East of True North (at 24/Nov/2022)
Grid North is 0.99 degrees West of True North
To correct azimuth from True to Grid add 0.99 degrees
To correct azimuth from Magnetic to Grid add 6.77 degrees



REFERENCE WELLPATH IDENTIFICATION

Operator	Pioneer Natural Resources	Well	University 7-20F No. 6H
Field	Andrews County, TX	API	42-003-48493-0000
Facility	University 7-20 Pad	Wellbore	University 7-20F No. 6H
Slot	University 7-20F No. 6H		

REPORT SETUP INFORMATION

Projection System	NAD27 / Lambert Texas SP, Central Zone (4203), US feet	Software System	WellArchitect® 6.0
North Reference	Grid	User	Florrol01
Scale	1.000191	Report Generated	12/30/2022 at 9:03:06 AM
Convergence at slot	0.99° West	Database	WellArchitectDB

WELLPATH LOCATION

	Local coordinates		Grid coordinates		Geographic coordinates	
	North[ft]	East[ft]	Easting[US ft]	Northing[US ft]	Latitude	Longitude
Slot Location	25.90	96.58	1405572.40	1009001.20	32°25'35.6917"N	102°15'33.8395"W
Facility Reference Pt			1405475.80	1008975.30	32°25'35.4190"N	102°15'34.9609"W
Field Reference Pt			609601.22	0.00	29°35'29.3607"N	104°42'28.9819"W

WELLPATH DATUM

Calculation method	Minimum curvature	Rig: H&P 417 (KB) to Facility Vertical Datum	2989.00ft
Horizontal Reference Pt	Slot	Rig: H&P 417 (KB) to Mean Sea Level	2989.00ft
Vertical Reference Pt	Rig: H&P 417 (KB)	Rig: H&P 417 (KB) to Ground Level at Slot (University 7-20F No. 6H)	26.00ft
MD Reference Pt	Rig: H&P 417 (KB)	Section Origin	N 0.00, E 0.00 ft
Field Vertical Reference	Mean Sea Level	Section Azimuth	165.89°

REFERENCE WELLPATH IDENTIFICATION

Operator	Pioneer Natural Resources	Well	University 7-20F No. 6H
Field	Andrews County, TX	API	42-003-48493-0000
Facility	University 7-20 Pad	Wellbore	University 7-20F No. 6H
Slot	University 7-20F No. 6H		

WELLPATH DATA (274 stations) † = interpolated, ‡ = extrapolated station

MD [ft]	Inclination [°]	Azimuth [°]	TVD [ft]	Vert Sect [ft]	North [ft]	East [ft]	Grid East [US ft]	Grid North [US ft]	Latitude	Longitude	DLS [°/100ft]	Comments
0.00†	0.000	285.500	0.00	0.00	0.00	0.00	1405572.40	1009001.20	32°25'35.6917"N	102°15'33.8395"W	0.00	
26.00	0.000	285.500	26.00	0.00	0.00	0.00	1405572.40	1009001.20	32°25'35.6917"N	102°15'33.8395"W	0.00	
143.00	0.400	285.500	143.00	-0.20	0.11	-0.39	1405572.01	1009001.31	32°25'35.6927"N	102°15'33.8441"W	0.34	
233.00	0.400	249.800	233.00	-0.32	0.08	-0.99	1405571.41	1009001.28	32°25'35.6924"N	102°15'33.8511"W	0.27	
321.00	0.300	305.700	321.00	-0.47	0.11	-1.47	1405570.93	1009001.31	32°25'35.6926"N	102°15'33.8566"W	0.39	
403.00	0.200	277.400	402.99	-0.68	0.26	-1.78	1405570.62	1009001.46	32°25'35.6940"N	102°15'33.8604"W	0.19	
496.00	0.100	264.600	495.99	-0.76	0.27	-2.02	1405570.38	1009001.47	32°25'35.6940"N	102°15'33.8632"W	0.11	
591.00	0.200	260.600	590.99	-0.78	0.24	-2.27	1405570.13	1009001.44	32°25'35.6937"N	102°15'33.8660"W	0.11	
686.00	0.300	107.600	685.99	-0.66	0.13	-2.20	1405570.20	1009001.33	32°25'35.6927"N	102°15'33.8652"W	0.51	
781.00	0.500	102.500	780.99	-0.35	-0.03	-1.56	1405570.84	1009001.17	32°25'35.6911"N	102°15'33.8577"W	0.21	
874.00	0.600	98.500	873.99	0.02	-0.19	-0.68	1405571.72	1009001.01	32°25'35.6897"N	102°15'33.8474"W	0.12	
969.00	0.600	109.700	968.98	0.49	-0.43	0.28	1405572.68	1009000.77	32°25'35.6875"N	102°15'33.8361"W	0.12	
1063.00	0.600	77.600	1062.98	0.78	-0.49	1.23	1405573.63	1009000.71	32°25'35.6870"N	102°15'33.8251"W	0.35	
1158.00	1.700	72.300	1157.96	0.70	0.04	3.05	1405575.46	1009001.24	32°25'35.6927"N	102°15'33.8039"W	1.16	
1251.00	2.400	73.500	1250.90	0.54	1.01	6.24	1405578.64	1009002.21	32°25'35.7028"N	102°15'33.7670"W	0.75	
1345.00	2.800	74.100	1344.80	0.38	2.20	10.33	1405582.73	1009003.40	32°25'35.7153"N	102°15'33.7194"W	0.43	
1439.00	3.000	75.100	1438.68	0.28	3.46	14.92	1405587.32	1009004.66	32°25'35.7285"N	102°15'33.6662"W	0.22	
1532.00	3.000	74.600	1531.55	0.19	4.74	19.61	1405592.02	1009005.94	32°25'35.7419"N	102°15'33.6117"W	0.03	
1627.00	3.100	76.700	1626.42	0.17	5.99	24.51	1405596.92	1009007.19	32°25'35.7552"N	102°15'33.5548"W	0.16	
1721.00	3.000	73.000	1720.28	0.08	7.29	29.34	1405601.74	1009008.49	32°25'35.7689"N	102°15'33.4988"W	0.23	
1814.00	2.900	72.100	1813.16	-0.20	8.73	33.90	1405606.31	1009009.93	32°25'35.7839"N	102°15'33.4458"W	0.12	
1919.00	2.700	69.700	1918.04	-0.64	10.40	38.75	1405611.16	1009011.60	32°25'35.8012"N	102°15'33.3896"W	0.22	Imported MWD Surveys 143' - 1919' (Corrected for Rig Height)
1994.00	2.280	74.370	1992.96	-0.87	11.41	41.84	1405614.25	1009012.62	32°25'35.8118"N	102°15'33.3537"W	0.62	
2089.00	2.220	73.230	2087.89	-1.00	12.45	45.43	1405617.83	1009013.66	32°25'35.8227"N	102°15'33.3122"W	0.08	
2183.00	3.700	73.890	2181.76	-1.20	13.82	50.08	1405622.49	1009015.02	32°25'35.8370"N	102°15'33.2581"W	1.57	
2278.00	5.550	75.710	2276.45	-1.32	15.81	57.48	1405629.89	1009017.01	32°25'35.8579"N	102°15'33.1722"W	1.95	
2372.00	7.110	76.990	2369.87	-1.22	18.24	67.55	1405639.97	1009019.44	32°25'35.8837"N	102°15'33.0552"W	1.67	
2467.00	8.500	75.590	2463.99	-1.14	21.31	80.08	1405652.50	1009022.51	32°25'35.9163"N	102°15'32.9097"W	1.48	
2562.00	9.680	71.160	2557.80	-1.84	25.64	94.44	1405666.86	1009026.84	32°25'35.9615"N	102°15'32.7431"W	1.44	
2657.00	10.420	70.590	2651.34	-3.29	31.07	110.10	1405682.53	1009032.28	32°25'36.0180"N	102°15'32.5615"W	0.79	

REFERENCE WELLPATH IDENTIFICATION

Operator	Pioneer Natural Resources	Well	University 7-20F No. 6H
Field	Andrews County, TX	API	42-003-48493-0000
Facility	University 7-20 Pad	Wellbore	University 7-20F No. 6H
Slot	University 7-20F No. 6H		

WELLPATH DATA (274 stations)

MD [ft]	Inclination [°]	Azimuth [°]	TVD [ft]	Vert Sect [ft]	North [ft]	East [ft]	Grid East [US ft]	Grid North [US ft]	Latitude	Longitude	DLS [°/100ft]	Comments
2751.00	11.220	68.260	2743.67	-5.29	37.28	126.62	1405699.04	1009038.49	32°25'36.0823"N	102°15'32.3701"W	0.97	
2846.00	12.160	68.000	2836.70	-7.89	44.45	144.48	1405716.91	1009045.66	32°25'36.1563"N	102°15'32.1632"W	0.99	
2940.00	13.080	72.020	2928.43	-9.97	51.45	163.78	1405736.21	1009052.66	32°25'36.2288"N	102°15'31.9395"W	1.35	
3035.00	14.110	73.070	3020.76	-11.26	58.14	185.08	1405757.51	1009059.35	32°25'36.2986"N	102°15'31.6924"W	1.11	
3130.00	14.280	71.990	3112.86	-12.63	65.13	207.30	1405779.74	1009066.34	32°25'36.3716"N	102°15'31.4346"W	0.33	
3224.00	14.190	71.710	3203.98	-14.26	72.33	229.26	1405801.71	1009073.55	32°25'36.4466"N	102°15'31.1798"W	0.12	
3319.00	14.200	72.220	3296.08	-15.85	79.54	251.42	1405823.86	1009080.76	32°25'36.5218"N	102°15'30.9229"W	0.13	
3413.00	15.080	70.360	3387.02	-17.77	87.17	273.91	1405846.36	1009088.39	32°25'36.6011"N	102°15'30.6620"W	1.06	
3508.00	15.440	70.430	3478.67	-20.16	95.56	297.47	1405869.92	1009096.78	32°25'36.6881"N	102°15'30.3890"W	0.38	
3603.00	15.340	70.040	3570.27	-22.65	104.09	321.19	1405893.65	1009105.31	32°25'36.7766"N	102°15'30.1139"W	0.15	
3698.00	15.570	70.620	3661.83	-25.10	112.61	345.03	1405917.50	1009113.83	32°25'36.8649"N	102°15'29.8376"W	0.29	
3792.00	15.590	70.640	3752.38	-27.41	120.98	368.85	1405941.32	1009122.21	32°25'36.9519"N	102°15'29.5615"W	0.02	
3887.00	15.550	70.290	3843.89	-29.82	129.51	392.88	1405965.35	1009130.73	32°25'37.0403"N	102°15'29.2829"W	0.11	
3981.00	15.490	70.500	3934.46	-32.23	137.95	416.57	1405989.05	1009139.18	32°25'37.1279"N	102°15'29.0082"W	0.09	
4076.00	15.430	70.530	4026.03	-34.61	146.40	440.45	1406012.93	1009147.62	32°25'37.2155"N	102°15'28.7314"W	0.06	
4170.00	15.230	70.130	4116.68	-37.01	154.76	463.85	1406036.34	1009155.99	32°25'37.3023"N	102°15'28.4601"W	0.24	
4264.00	15.470	69.780	4207.33	-39.59	163.29	487.22	1406059.72	1009164.52	32°25'37.3907"N	102°15'28.1892"W	0.27	
4358.00	15.380	70.110	4297.94	-42.18	171.86	510.71	1406083.21	1009173.10	32°25'37.4795"N	102°15'27.9170"W	0.13	
4453.00	15.500	71.420	4389.52	-44.43	180.19	534.59	1406107.09	1009181.43	32°25'37.5660"N	102°15'27.6401"W	0.39	
4547.00	15.460	72.360	4480.11	-46.18	187.99	558.43	1406130.94	1009189.23	32°25'37.6473"N	102°15'27.3635"W	0.27	
4641.00	15.350	72.360	4570.73	-47.72	195.56	582.23	1406154.74	1009196.80	32°25'37.7262"N	102°15'27.0875"W	0.12	
4736.00	15.120	72.930	4662.39	-49.14	203.01	606.06	1406178.57	1009204.25	32°25'37.8040"N	102°15'26.8111"W	0.29	
4830.00	14.580	72.620	4753.25	-50.44	210.14	629.07	1406201.59	1009211.38	32°25'37.8785"N	102°15'26.5441"W	0.58	
4924.00	14.020	71.610	4844.34	-51.97	217.27	651.16	1406223.69	1009218.51	32°25'37.9528"N	102°15'26.2878"W	0.65	
5019.00	14.760	73.700	4936.36	-53.29	224.29	673.70	1406246.23	1009225.54	32°25'38.0262"N	102°15'26.0263"W	0.95	
5114.00	15.150	74.910	5028.14	-53.96	230.92	697.30	1406269.83	1009232.17	32°25'38.0958"N	102°15'25.7524"W	0.53	
5208.00	15.620	74.600	5118.77	-54.46	237.48	721.36	1406293.90	1009238.73	32°25'38.1648"N	102°15'25.4730"W	0.51	
5303.00	16.060	74.660	5210.16	-55.03	244.35	746.36	1406318.91	1009245.60	32°25'38.2371"N	102°15'25.1828"W	0.46	
5397.00	16.090	74.720	5300.49	-55.57	251.23	771.47	1406344.01	1009252.47	32°25'38.3093"N	102°15'24.8913"W	0.04	
5492.00	15.720	73.180	5391.85	-56.45	258.42	796.49	1406369.04	1009259.67	32°25'38.3848"N	102°15'24.6009"W	0.59	

REFERENCE WELLPATH IDENTIFICATION

Operator	Pioneer Natural Resources	Well	University 7-20F No. 6H
Field	Andrews County, TX	API	42-003-48493-0000
Facility	University 7-20 Pad	Wellbore	University 7-20F No. 6H
Slot	University 7-20F No. 6H		

WELLPATH DATA (274 stations)

MD [ft]	Inclination [°]	Azimuth [°]	TVD [ft]	Vert Sect [ft]	North [ft]	East [ft]	Grid East [US ft]	Grid North [US ft]	Latitude	Longitude	DLS [°/100ft]	Comments
5586.00	15.880	72.510	5482.30	-57.81	265.97	820.94	1406393.50	1009267.22	32°25'38.4637"N	102°15'24.3172"W	0.26	
5680.00	15.810	72.260	5572.73	-59.38	273.74	845.40	1406417.96	1009274.99	32°25'38.5447"N	102°15'24.0334"W	0.10	
5775.00	15.730	72.220	5664.15	-61.02	281.61	869.99	1406442.56	1009282.86	32°25'38.6268"N	102°15'23.7482"W	0.08	
5869.00	15.690	72.160	5754.64	-62.67	289.40	894.22	1406466.79	1009290.65	32°25'38.7080"N	102°15'23.4671"W	0.05	
5963.00	15.490	71.840	5845.18	-64.38	297.20	918.25	1406490.82	1009298.46	32°25'38.7893"N	102°15'23.1884"W	0.23	
6058.00	15.110	71.510	5936.81	-66.22	305.08	942.05	1406514.63	1009306.34	32°25'38.8714"N	102°15'22.9124"W	0.41	
6152.00	15.230	71.200	6027.54	-68.17	312.95	965.35	1406537.94	1009314.21	32°25'38.9532"N	102°15'22.6421"W	0.15	
6247.00	15.290	71.330	6119.19	-70.18	320.98	989.03	1406561.62	1009322.24	32°25'39.0367"N	102°15'22.3675"W	0.07	
6341.00	15.500	70.960	6209.82	-72.25	329.04	1012.65	1406585.24	1009330.31	32°25'39.1205"N	102°15'22.0937"W	0.25	
6436.00	15.240	69.710	6301.42	-74.68	337.51	1036.36	1406608.96	1009338.78	32°25'39.2084"N	102°15'21.8188"W	0.44	
6531.00	15.250	69.280	6393.08	-77.47	346.26	1059.76	1406632.36	1009347.53	32°25'39.2989"N	102°15'21.5477"W	0.12	
6625.00	15.330	69.390	6483.75	-80.29	355.01	1082.95	1406655.56	1009356.28	32°25'39.3894"N	102°15'21.2789"W	0.09	
6719.00	15.020	68.500	6574.47	-83.27	363.85	1105.91	1406678.52	1009365.12	32°25'39.4808"N	102°15'21.0128"W	0.41	
6814.00	14.770	68.320	6666.28	-86.45	372.84	1128.62	1406701.23	1009374.11	32°25'39.5736"N	102°15'20.7498"W	0.27	
6909.00	14.050	67.650	6758.29	-89.69	381.69	1150.54	1406723.16	1009382.97	32°25'39.6650"N	102°15'20.4959"W	0.78	
6951.00	13.920	67.720	6799.04	-91.14	385.55	1159.93	1406732.55	1009386.82	32°25'39.7047"N	102°15'20.3871"W	0.31	12 1/4" BKR MWD Surveys 1994' - 6951'
7009.00	13.950	67.310	6855.34	-93.18	390.89	1172.83	1406745.46	1009392.16	32°25'39.7598"N	102°15'20.2377"W	0.18	
7089.00	13.530	57.120	6933.06	-97.63	399.69	1189.59	1406762.22	1009400.97	32°25'39.8497"N	102°15'20.0439"W	3.07	
7183.00	12.300	84.680	7024.77	-99.64	406.60	1208.82	1406781.44	1009407.87	32°25'39.9213"N	102°15'19.8211"W	6.62	
7278.00	11.010	85.190	7117.81	-96.63	408.29	1227.93	1406800.56	1009409.57	32°25'39.9414"N	102°15'19.5985"W	1.36	
7372.00	11.250	85.660	7210.04	-93.62	409.74	1246.02	1406818.65	1009411.02	32°25'39.9588"N	102°15'19.3878"W	0.27	
7467.00	7.400	112.870	7303.81	-88.36	408.06	1260.91	1406833.55	1009409.34	32°25'39.9448"N	102°15'19.2138"W	6.06	
7561.00	6.890	115.200	7397.08	-81.15	403.31	1271.59	1406844.23	1009404.59	32°25'39.8995"N	102°15'19.0882"W	0.62	
7656.00	6.950	103.590	7491.39	-74.87	399.53	1282.33	1406854.97	1009400.81	32°25'39.8640"N	102°15'18.9621"W	1.47	
7751.00	6.880	89.820	7585.71	-70.83	398.20	1293.61	1406866.25	1009399.48	32°25'39.8528"N	102°15'18.8303"W	1.74	
7846.00	1.770	65.130	7680.41	-69.73	398.84	1300.63	1406873.28	1009400.11	32°25'39.8602"N	102°15'18.7485"W	5.60	
7940.00	1.450	334.370	7774.39	-71.17	400.52	1301.44	1406874.08	1009401.79	32°25'39.8770"N	102°15'18.7395"W	2.45	
8035.00	1.440	319.200	7869.36	-73.41	402.51	1300.14	1406872.78	1009403.78	32°25'39.8965"N	102°15'18.7550"W	0.40	
8130.00	1.080	328.980	7964.33	-75.33	404.18	1298.90	1406871.54	1009405.45	32°25'39.9128"N	102°15'18.7699"W	0.44	
8224.00	1.690	344.820	8058.30	-77.57	406.27	1298.08	1406870.72	1009407.55	32°25'39.9334"N	102°15'18.7798"W	0.76	

REFERENCE WELLPATH IDENTIFICATION

Operator	Pioneer Natural Resources	Well	University 7-20F No. 6H
Field	Andrews County, TX	API	42-003-48493-0000
Facility	University 7-20 Pad	Wellbore	University 7-20F No. 6H
Slot	University 7-20F No. 6H		

WELLPATH DATA (274 stations)

MD [ft]	Inclination [°]	Azimuth [°]	TVD [ft]	Vert Sect [ft]	North [ft]	East [ft]	Grid East [US ft]	Grid North [US ft]	Latitude	Longitude	DLS [°/100ft]	Comments
8319.00	1.450	321.520	8153.27	-80.06	408.57	1296.96	1406869.61	1009409.84	32°25'39.9559"N	102°15'18.7933"W	0.71	
8414.00	1.460	323.800	8248.24	-82.28	410.48	1295.50	1406868.14	1009411.76	32°25'39.9746"N	102°15'18.8108"W	0.06	
8509.00	1.300	322.900	8343.21	-84.39	412.32	1294.13	1406866.78	1009413.60	32°25'39.9926"N	102°15'18.8270"W	0.17	
8604.00	0.030	197.510	8438.20	-85.36	413.16	1293.48	1406866.12	1009414.43	32°25'40.0007"N	102°15'18.8349"W	1.39	
8699.00	0.040	182.140	8533.20	-85.31	413.10	1293.47	1406866.11	1009414.38	32°25'40.0001"N	102°15'18.8350"W	0.01	
8793.00	0.030	178.330	8627.20	-85.25	413.04	1293.47	1406866.11	1009414.32	32°25'39.9996"N	102°15'18.8350"W	0.01	
8887.00	0.030	260.580	8721.20	-85.23	413.01	1293.44	1406866.09	1009414.29	32°25'39.9993"N	102°15'18.8352"W	0.04	
8983.00	0.070	238.890	8817.20	-85.22	412.98	1293.37	1406866.01	1009414.26	32°25'39.9989"N	102°15'18.8361"W	0.05	
9077.00	4.580	180.900	8911.10	-81.57	409.20	1293.26	1406865.90	1009410.47	32°25'39.9615"N	102°15'18.8366"W	4.83	
9172.00	15.110	180.640	9004.57	-65.89	392.98	1293.06	1406865.71	1009394.25	32°25'39.8010"N	102°15'18.8356"W	11.08	
9266.00	23.030	170.140	9093.37	-35.65	362.55	1296.08	1406868.72	1009363.82	32°25'39.5005"N	102°15'18.7943"W	9.15	
9361.00	33.110	166.500	9177.09	8.94	318.90	1305.34	1406877.99	1009320.16	32°25'39.0702"N	102°15'18.6775"W	10.76	
9456.00	41.200	166.150	9252.74	66.27	263.20	1318.91	1406891.56	1009264.45	32°25'38.5214"N	102°15'18.5079"W	8.52	
9550.00	50.920	165.060	9317.89	133.87	197.73	1335.77	1406908.42	1009198.97	32°25'37.8766"N	102°15'18.2981"W	10.37	
9644.00	59.110	164.020	9371.75	210.80	123.58	1356.32	1406928.97	1009124.80	32°25'37.1464"N	102°15'18.0435"W	8.76	
9739.00	67.280	161.830	9414.55	295.40	42.62	1381.24	1406953.91	1009043.82	32°25'36.3497"N	102°15'17.7364"W	8.84	
9833.00	71.010	161.460	9448.01	382.98	-40.74	1408.90	1406981.57	1008960.45	32°25'35.5297"N	102°15'17.3970"W	3.99	
9928.00	72.240	160.560	9477.96	472.81	-125.99	1438.24	1407010.92	1008875.19	32°25'34.6913"N	102°15'17.0376"W	1.58	
10022.00	76.820	163.330	9503.03	563.15	-212.10	1466.29	1407038.97	1008789.06	32°25'33.8442"N	102°15'16.6931"W	5.64	
10116.00	81.740	170.400	9520.53	655.41	-301.96	1487.21	1407059.89	1008699.18	32°25'32.9587"N	102°15'16.4309"W	9.05	
10211.00	89.440	168.650	9527.83	749.86	-395.03	1504.42	1407077.11	1008606.10	32°25'32.0409"N	102°15'16.2114"W	8.31	
10305.00	90.470	160.380	9527.91	843.75	-485.53	1529.50	1407102.19	1008515.57	32°25'31.1497"N	102°15'15.9007"W	8.87	
10400.00	92.510	157.730	9525.43	938.03	-574.21	1563.44	1407136.14	1008426.88	32°25'30.2781"N	102°15'15.4869"W	3.52	
10431.00	91.950	159.610	9524.23	968.76	-603.07	1574.71	1407147.41	1008398.02	32°25'29.9946"N	102°15'15.3497"W	6.32	
10463.00	91.640	164.630	9523.23	1000.67	-633.50	1584.52	1407157.22	1008367.58	32°25'29.6952"N	102°15'15.2290"W	15.71	
10494.00	90.930	168.900	9522.53	1031.65	-663.66	1591.62	1407164.32	1008337.41	32°25'29.3980"N	102°15'15.1402"W	13.96	
10589.00	90.500	170.240	9521.34	1126.44	-757.08	1608.82	1407181.52	1008243.98	32°25'28.4767"N	102°15'14.9208"W	1.48	
10684.00	89.240	169.710	9521.56	1221.20	-850.63	1625.35	1407198.06	1008150.41	32°25'27.5540"N	102°15'14.7091"W	1.44	
10778.00	88.870	170.100	9523.11	1314.95	-943.16	1641.83	1407214.54	1008057.86	32°25'26.6413"N	102°15'14.4983"W	0.57	
10872.00	89.050	170.220	9524.82	1408.68	-1035.76	1657.89	1407230.60	1007965.24	32°25'25.7279"N	102°15'14.2923"W	0.23	

REFERENCE WELLPATH IDENTIFICATION

Operator	Pioneer Natural Resources	Well	University 7-20F No. 6H
Field	Andrews County, TX	API	42-003-48493-0000
Facility	University 7-20 Pad	Wellbore	University 7-20F No. 6H
Slot	University 7-20F No. 6H		

WELLPATH DATA (274 stations)

MD [ft]	Inclination [°]	Azimuth [°]	TVD [ft]	Vert Sect [ft]	North [ft]	East [ft]	Grid East [US ft]	Grid North [US ft]	Latitude	Longitude	DLS [°/100ft]	Comments
10967.00	88.930	167.740	9526.49	1503.52	-1128.99	1676.04	1407248.76	1007872.00	32°25'24.8086"N	102°15'14.0617"W	2.61	
11062.00	90.870	165.420	9526.66	1598.50	-1221.38	1698.09	1407270.81	1007779.59	32°25'23.8983"N	102°15'13.7860"W	3.18	
11156.00	88.870	165.810	9526.87	1692.49	-1312.43	1721.44	1407294.17	1007688.52	32°25'23.0014"N	102°15'13.4953"W	2.17	
11251.00	89.020	166.000	9528.62	1787.48	-1404.55	1744.57	1407317.30	1007596.38	32°25'22.0939"N	102°15'13.2069"W	0.25	
11345.00	88.440	166.300	9530.70	1881.45	-1495.80	1767.07	1407339.80	1007505.12	32°25'21.1950"N	102°15'12.9261"W	0.69	
11440.00	88.690	165.890	9533.08	1976.42	-1587.99	1789.89	1407362.63	1007412.91	32°25'20.2869"N	102°15'12.6414"W	0.51	
11534.00	89.520	165.570	9534.55	2070.41	-1679.07	1813.06	1407385.80	1007321.81	32°25'19.3896"N	102°15'12.3528"W	0.95	
11629.00	89.580	166.290	9535.30	2165.41	-1771.22	1836.15	1407408.90	1007229.65	32°25'18.4819"N	102°15'12.0649"W	0.76	
11723.00	89.460	166.640	9536.08	2259.40	-1862.61	1858.15	1407430.90	1007138.24	32°25'17.5815"N	102°15'11.7899"W	0.39	
11817.00	89.460	166.720	9536.97	2353.38	-1954.07	1879.81	1407452.56	1007046.76	32°25'16.6803"N	102°15'11.5189"W	0.09	
11912.00	89.210	166.670	9538.07	2448.37	-2046.52	1901.67	1407474.43	1006954.30	32°25'15.7694"N	102°15'11.2453"W	0.27	
12006.00	89.520	166.250	9539.11	2542.36	-2137.90	1923.67	1407496.44	1006862.90	32°25'14.8691"N	102°15'10.9702"W	0.56	
12100.00	89.420	166.200	9539.98	2636.35	-2229.19	1946.06	1407518.82	1006771.59	32°25'13.9697"N	102°15'10.6908"W	0.12	
12195.00	89.090	165.430	9541.22	2731.34	-2321.29	1969.33	1407542.11	1006679.48	32°25'13.0625"N	102°15'10.4007"W	0.88	
12290.00	89.020	165.870	9542.79	2826.33	-2413.31	1992.88	1407565.65	1006587.43	32°25'12.1560"N	102°15'10.1076"W	0.47	
12385.00	89.790	165.910	9543.77	2921.32	-2505.44	2016.03	1407588.81	1006495.29	32°25'11.2485"N	102°15'9.8189"W	0.81	
12480.00	89.670	165.060	9544.22	3016.32	-2597.40	2039.84	1407612.63	1006403.31	32°25'10.3427"N	102°15'9.5227"W	0.90	
12575.00	89.640	165.550	9544.79	3111.31	-2689.29	2063.94	1407636.73	1006311.40	32°25'9.4377"N	102°15'9.2231"W	0.52	
12669.00	89.490	165.890	9545.51	3205.31	-2780.39	2087.13	1407659.92	1006220.29	32°25'8.5404"N	102°15'8.9344"W	0.40	
12764.00	89.790	166.020	9546.10	3300.31	-2872.54	2110.18	1407682.98	1006128.11	32°25'7.6325"N	102°15'8.6469"W	0.34	
12859.00	89.360	164.760	9546.81	3395.30	-2964.47	2134.14	1407706.95	1006036.17	32°25'6.7271"N	102°15'8.3490"W	1.40	
12954.00	90.410	165.830	9547.00	3490.29	-3056.35	2158.26	1407731.07	1005944.27	32°25'5.8222"N	102°15'8.0492"W	1.58	
13049.00	89.730	165.650	9546.88	3585.29	-3148.43	2181.66	1407754.47	1005852.18	32°25'4.9152"N	102°15'7.7578"W	0.74	
13144.00	89.890	166.550	9547.20	3680.29	-3240.64	2204.48	1407777.30	1005759.94	32°25'4.0068"N	102°15'7.4730"W	0.96	
13239.00	91.270	164.920	9546.24	3775.28	-3332.70	2227.88	1407800.71	1005667.87	32°25'3.0999"N	102°15'7.1815"W	2.25	
13335.00	89.830	166.370	9545.31	3871.27	-3425.70	2251.68	1407824.51	1005574.86	32°25'2.1839"N	102°15'6.8852"W	2.13	
13430.00	90.040	166.270	9545.42	3966.26	-3518.00	2274.15	1407846.98	1005482.53	32°25'1.2745"N	102°15'6.6046"W	0.24	
13525.00	90.130	165.700	9545.28	4061.26	-3610.17	2297.16	1407869.99	1005390.34	32°25'0.3665"N	102°15'6.3177"W	0.61	
13620.00	88.410	166.140	9546.49	4156.25	-3702.31	2320.27	1407893.11	1005298.19	32°24'59.4589"N	102°15'6.0297"W	1.87	
13715.00	88.530	165.530	9549.03	4251.22	-3794.39	2343.51	1407916.35	1005206.10	32°24'58.5519"N	102°15'5.7401"W	0.65	

REFERENCE WELLPATH IDENTIFICATION

Operator	Pioneer Natural Resources	Well	University 7-20F No. 6H
Field	Andrews County, TX	API	42-003-48493-0000
Facility	University 7-20 Pad	Wellbore	University 7-20F No. 6H
Slot	University 7-20F No. 6H		

WELLPATH DATA (274 stations)

MD [ft]	Inclination [°]	Azimuth [°]	TVD [ft]	Vert Sect [ft]	North [ft]	East [ft]	Grid East [US ft]	Grid North [US ft]	Latitude	Longitude	DLS [°/100ft]	Comments
13810.00	88.530	165.830	9551.46	4346.18	-3886.40	2366.99	1407939.84	1005114.06	32°24'57.6455"N	102°15'5.4476"W	0.32	
13905.00	88.160	165.890	9554.21	4441.15	-3978.49	2390.19	1407963.05	1005021.96	32°24'56.7384"N	102°15'5.1585"W	0.39	
14000.00	88.650	165.440	9556.85	4536.11	-4070.49	2413.70	1407986.56	1004929.94	32°24'55.8321"N	102°15'4.8658"W	0.70	
14095.00	88.500	164.600	9559.21	4631.07	-4162.23	2438.25	1408011.11	1004838.18	32°24'54.9287"N	102°15'4.5611"W	0.90	
14190.00	89.210	165.630	9561.11	4726.04	-4254.03	2462.65	1408035.52	1004746.37	32°24'54.0247"N	102°15'4.2580"W	1.32	
14285.00	88.810	164.950	9562.75	4821.02	-4345.90	2486.77	1408059.64	1004654.48	32°24'53.1198"N	102°15'3.9583"W	0.83	
14379.00	89.020	166.560	9564.53	4915.00	-4436.99	2509.90	1408082.77	1004563.37	32°24'52.2225"N	102°15'3.6702"W	1.73	
14473.00	89.090	166.310	9566.09	5008.98	-4528.35	2531.94	1408104.82	1004471.99	32°24'51.3223"N	102°15'3.3947"W	0.28	
14568.00	88.720	166.770	9567.90	5103.95	-4620.73	2554.05	1408126.93	1004379.60	32°24'50.4122"N	102°15'3.1183"W	0.62	
14663.00	88.620	166.690	9570.11	5198.92	-4713.17	2575.85	1408148.74	1004287.14	32°24'49.5014"N	102°15'2.8455"W	0.13	
14758.00	88.720	166.590	9572.31	5293.89	-4805.57	2597.79	1408170.69	1004194.72	32°24'48.5909"N	102°15'2.5709"W	0.15	
14852.00	88.500	165.440	9574.59	5387.86	-4896.76	2620.50	1408193.40	1004103.52	32°24'47.6926"N	102°15'2.2877"W	1.25	
14947.00	89.460	166.330	9576.28	5482.84	-4988.87	2643.67	1408216.57	1004011.39	32°24'46.7852"N	102°15'1.9991"W	1.38	
15042.00	89.460	165.770	9577.18	5577.83	-5081.06	2666.57	1408239.47	1003919.17	32°24'45.8769"N	102°15'1.7134"W	0.59	
15136.00	89.460	166.010	9578.06	5671.83	-5172.22	2689.48	1408262.39	1003828.00	32°24'44.9789"N	102°15'1.4279"W	0.26	
15231.00	90.290	165.340	9578.27	5766.83	-5264.27	2712.99	1408285.90	1003735.93	32°24'44.0723"N	102°15'1.1352"W	1.12	
15325.00	89.700	166.440	9578.28	5860.83	-5355.43	2735.90	1408308.82	1003644.76	32°24'43.1742"N	102°15'0.8497"W	1.33	
15419.00	89.610	165.560	9578.84	5954.82	-5446.64	2758.64	1408331.57	1003553.53	32°24'42.2758"N	102°15'0.5661"W	0.94	
15514.00	90.720	165.560	9578.57	6049.82	-5538.63	2782.33	1408355.26	1003461.52	32°24'41.3696"N	102°15'0.2713"W	1.17	
15609.00	90.840	166.780	9577.28	6144.81	-5630.87	2805.04	1408377.97	1003369.27	32°24'40.4609"N	102°14'59.9880"W	1.29	
15703.00	90.350	167.150	9576.30	6238.79	-5722.44	2826.24	1408399.17	1003277.68	32°24'39.5585"N	102°14'59.7223"W	0.65	
15797.00	89.830	165.790	9576.15	6332.78	-5813.83	2848.23	1408421.17	1003186.27	32°24'38.6581"N	102°14'59.4475"W	1.55	
15892.00	90.630	165.600	9575.77	6427.78	-5905.88	2871.70	1408444.65	1003094.20	32°24'37.7513"N	102°14'59.1552"W	0.87	
15987.00	88.990	165.860	9576.09	6522.77	-5997.95	2895.12	1408468.07	1003002.12	32°24'36.8445"N	102°14'58.8636"W	1.75	
16082.00	89.270	165.250	9577.53	6617.76	-6089.93	2918.81	1408491.77	1002910.11	32°24'35.9384"N	102°14'58.5688"W	0.71	
16176.00	89.240	164.570	9578.75	6711.74	-6180.68	2943.28	1408516.24	1002819.35	32°24'35.0447"N	102°14'58.2652"W	0.72	
16271.00	90.130	165.610	9579.27	6806.72	-6272.48	2967.73	1408540.69	1002727.53	32°24'34.1407"N	102°14'57.9617"W	1.44	
16366.00	90.970	165.800	9578.36	6901.72	-6364.54	2991.18	1408564.15	1002635.46	32°24'33.2339"N	102°14'57.6697"W	0.91	
16455.00	91.520	167.930	9576.43	6990.68	-6451.18	3011.40	1408584.37	1002548.80	32°24'32.3801"N	102°14'57.4165"W	2.47	
16540.00	90.180	168.620	9575.17	7075.59	-6534.40	3028.67	1408601.64	1002465.57	32°24'31.5597"N	102°14'57.1983"W	1.77	

REFERENCE WELLPATH IDENTIFICATION

Operator	Pioneer Natural Resources	Well	University 7-20F No. 6H
Field	Andrews County, TX	API	42-003-48493-0000
Facility	University 7-20 Pad	Wellbore	University 7-20F No. 6H
Slot	University 7-20F No. 6H		

WELLPATH DATA (274 stations)

MD [ft]	Inclination [°]	Azimuth [°]	TVD [ft]	Vert Sect [ft]	North [ft]	East [ft]	Grid East [US ft]	Grid North [US ft]	Latitude	Longitude	DLS [°/100ft]	Comments
16631.00	90.000	167.380	9575.02	7166.53	-6623.41	3047.59	1408620.57	1002376.54	32°24'30.6823"N	102°14'56.9598"W	1.38	
16721.00	90.120	165.810	9574.93	7256.52	-6710.95	3068.45	1408641.44	1002288.98	32°24'29.8197"N	102°14'56.6989"W	1.75	
16811.00	90.180	163.910	9574.70	7346.50	-6797.82	3091.96	1408664.94	1002202.09	32°24'28.9642"N	102°14'56.4073"W	2.11	
16900.00	90.060	164.850	9574.51	7435.47	-6883.53	3115.92	1408688.91	1002116.36	32°24'28.1203"N	102°14'56.1106"W	1.06	
16990.00	90.090	162.750	9574.39	7525.40	-6969.96	3141.03	1408714.03	1002029.92	32°24'27.2695"N	102°14'55.8005"W	2.33	
17085.00	90.090	158.550	9574.24	7619.98	-7059.57	3172.50	1408745.50	1001940.29	32°24'26.3883"N	102°14'55.4154"W	4.42	
17179.00	89.820	154.150	9574.32	7712.66	-7145.65	3210.20	1408783.21	1001854.19	32°24'25.5430"N	102°14'54.9585"W	4.69	
17211.00	89.480	155.690	9574.51	7744.08	-7174.64	3223.76	1408796.77	1001825.21	32°24'25.2586"N	102°14'54.7945"W	4.93	
17242.00	89.510	158.400	9574.78	7774.70	-7203.18	3235.85	1408808.86	1001796.66	32°24'24.9783"N	102°14'54.6478"W	8.74	
17272.00	89.820	160.790	9574.96	7804.52	-7231.29	3246.31	1408819.32	1001768.54	32°24'24.7019"N	102°14'54.5202"W	8.03	
17305.00	90.250	163.580	9574.94	7837.45	-7262.71	3256.41	1408829.42	1001737.12	32°24'24.3928"N	102°14'54.3961"W	8.55	
17368.00	89.880	166.290	9574.87	7900.43	-7323.54	3272.78	1408845.80	1001676.28	32°24'23.7938"N	102°14'54.1930"W	4.34	
17463.00	90.030	167.950	9574.94	7995.41	-7416.14	3293.95	1408866.98	1001583.66	32°24'22.8811"N	102°14'53.9274"W	1.75	
17558.00	90.250	170.020	9574.71	8090.26	-7509.39	3312.10	1408885.13	1001490.39	32°24'21.9617"N	102°14'53.6970"W	2.19	
17653.00	90.620	171.570	9573.99	8184.91	-7603.16	3327.30	1408900.33	1001396.60	32°24'21.0365"N	102°14'53.5010"W	1.68	
17747.00	90.310	167.400	9573.23	8278.70	-7695.55	3344.45	1408917.48	1001304.19	32°24'20.1253"N	102°14'53.2824"W	4.45	
17842.00	90.460	167.310	9572.59	8373.67	-7788.25	3365.25	1408938.28	1001211.48	32°24'19.2117"N	102°14'53.0213"W	0.18	
17936.00	90.460	170.220	9571.83	8467.54	-7880.43	3383.56	1408956.60	1001119.27	32°24'18.3028"N	102°14'52.7892"W	3.10	
18030.00	90.060	169.550	9571.41	8561.31	-7972.97	3400.07	1408973.11	1001026.72	32°24'17.3900"N	102°14'52.5782"W	0.83	
18124.00	90.490	170.210	9570.95	8655.08	-8065.51	3416.58	1408989.63	1000934.17	32°24'16.4773"N	102°14'52.3670"W	0.84	
18219.00	90.400	170.120	9570.22	8749.81	-8159.11	3432.81	1409005.86	1000840.55	32°24'15.5540"N	102°14'52.1589"W	0.13	
18313.00	90.120	167.500	9569.79	8843.68	-8251.31	3451.05	1409024.10	1000748.33	32°24'14.6449"N	102°14'51.9277"W	2.80	
18408.00	90.220	166.190	9569.51	8938.66	-8343.82	3472.67	1409045.73	1000655.80	32°24'13.7333"N	102°14'51.6570"W	1.38	
18502.00	90.280	166.560	9569.10	9032.66	-8435.17	3494.81	1409067.87	1000564.43	32°24'12.8333"N	102°14'51.3805"W	0.40	
18597.00	89.630	164.620	9569.17	9127.65	-8527.18	3518.45	1409091.52	1000472.41	32°24'11.9270"N	102°14'51.0863"W	2.15	
18692.00	89.820	164.370	9569.63	9222.62	-8618.72	3543.85	1409116.92	1000380.85	32°24'11.0256"N	102°14'50.7718"W	0.33	
18786.00	90.340	164.600	9569.50	9316.59	-8709.29	3568.99	1409142.07	1000290.26	32°24'10.1338"N	102°14'50.4604"W	0.60	
18881.00	90.180	164.700	9569.07	9411.57	-8800.90	3594.14	1409167.22	1000198.63	32°24'9.2317"N	102°14'50.1487"W	0.20	
18976.00	90.220	166.590	9568.74	9506.56	-8892.93	3617.69	1409190.78	1000106.59	32°24'8.3252"N	102°14'49.8556"W	1.99	
19071.00	90.250	166.570	9568.35	9601.56	-8985.34	3639.74	1409212.83	1000014.16	32°24'7.4147"N	102°14'49.5800"W	0.04	

REFERENCE WELLPATH IDENTIFICATION

Operator	Pioneer Natural Resources	Well	University 7-20F No. 6H
Field	Andrews County, TX	API	42-003-48493-0000
Facility	University 7-20 Pad	Wellbore	University 7-20F No. 6H
Slot	University 7-20F No. 6H		

WELLPATH DATA (274 stations)

MD [ft]	Inclination [°]	Azimuth [°]	TVD [ft]	Vert Sect [ft]	North [ft]	East [ft]	Grid East [US ft]	Grid North [US ft]	Latitude	Longitude	DLS [°/100ft]	Comments
19166.00	90.310	166.420	9567.88	9696.55	-9077.71	3661.93	1409235.02	999921.77	32°24'6.5046"N	102°14'49.3027"W	0.17	
19260.00	90.150	166.230	9567.50	9790.55	-9169.04	3684.15	1409257.25	999830.42	32°24'5.6047"N	102°14'49.0252"W	0.26	
19356.00	90.150	166.280	9567.25	9886.54	-9262.29	3706.96	1409280.06	999737.15	32°24'4.6860"N	102°14'48.7405"W	0.05	
19451.00	90.340	166.590	9566.85	9981.54	-9354.64	3729.24	1409302.35	999644.79	32°24'3.7761"N	102°14'48.4622"W	0.38	
19545.00	90.000	166.050	9566.57	10075.54	-9445.98	3751.47	1409324.58	999553.44	32°24'2.8762"N	102°14'48.1846"W	0.68	
19640.00	90.430	166.530	9566.21	10170.53	-9538.27	3773.99	1409347.10	999461.13	32°24'1.9669"N	102°14'47.9035"W	0.68	
19734.00	90.400	166.450	9565.53	10264.52	-9629.66	3795.95	1409369.06	999369.71	32°24'1.0664"N	102°14'47.6291"W	0.09	
19829.00	90.430	164.920	9564.84	10359.52	-9721.71	3819.43	1409392.56	999277.65	32°24'0.1597"N	102°14'47.3368"W	1.61	
19923.00	90.590	164.590	9564.01	10453.50	-9812.40	3844.15	1409417.28	999186.95	32°23'59.2667"N	102°14'47.0303"W	0.39	
20018.00	90.280	166.480	9563.28	10548.49	-9904.38	3867.88	1409441.01	999094.95	32°23'58.3607"N	102°14'46.7352"W	2.02	
20113.00	90.620	166.170	9562.54	10643.48	-9996.68	3890.34	1409463.47	999002.63	32°23'57.4513"N	102°14'46.4548"W	0.48	
20207.00	90.000	166.410	9562.03	10737.48	-10088.00	3912.61	1409485.75	998911.29	32°23'56.5515"N	102°14'46.1767"W	0.71	
20302.00	89.540	165.980	9562.41	10832.47	-10180.26	3935.28	1409508.43	998819.02	32°23'55.6426"N	102°14'45.8938"W	0.66	
20396.00	89.170	166.120	9563.47	10926.47	-10271.48	3957.94	1409531.09	998727.78	32°23'54.7440"N	102°14'45.6113"W	0.42	
20490.00	89.480	166.390	9564.58	11020.46	-10362.78	3980.27	1409553.43	998636.46	32°23'53.8444"N	102°14'45.3326"W	0.44	
20584.00	90.310	165.220	9564.75	11114.46	-10453.91	4003.33	1409576.48	998545.31	32°23'52.9468"N	102°14'45.0455"W	1.53	
20679.00	90.030	164.480	9564.47	11209.44	-10545.61	4028.15	1409601.32	998453.60	32°23'52.0438"N	102°14'44.7376"W	0.83	
20773.00	90.590	165.260	9563.96	11303.42	-10636.34	4052.69	1409625.85	998362.84	32°23'51.1502"N	102°14'44.4333"W	1.02	
20868.00	90.090	164.610	9563.39	11398.41	-10728.08	4077.38	1409650.55	998271.09	32°23'50.2468"N	102°14'44.1270"W	0.86	
20962.00	89.880	165.900	9563.42	11492.40	-10818.98	4101.30	1409674.48	998180.17	32°23'49.3515"N	102°14'43.8298"W	1.39	
21057.00	89.970	166.290	9563.54	11587.40	-10911.20	4124.13	1409697.31	998087.94	32°23'48.4430"N	102°14'43.5451"W	0.42	
21151.00	89.720	166.260	9563.80	11681.40	-11002.51	4146.43	1409719.62	997996.61	32°23'47.5433"N	102°14'43.2667"W	0.27	
21245.00	89.820	171.190	9564.18	11775.25	-11094.67	4164.81	1409738.00	997904.43	32°23'46.6347"N	102°14'43.0340"W	5.25	
21341.00	89.970	167.420	9564.35	11871.06	-11188.98	4182.62	1409755.81	997810.10	32°23'45.7045"N	102°14'42.8074"W	3.93	
21435.00	89.750	164.660	9564.58	11965.05	-11280.20	4205.29	1409778.49	997718.87	32°23'44.8059"N	102°14'42.5247"W	2.95	
21529.00	90.000	165.020	9564.79	12059.04	-11370.93	4229.88	1409803.08	997628.12	32°23'43.9125"N	102°14'42.2199"W	0.47	
21624.00	89.850	164.860	9564.91	12154.02	-11462.66	4254.56	1409827.77	997536.37	32°23'43.0090"N	102°14'41.9137"W	0.23	
21718.00	89.880	164.710	9565.13	12248.01	-11553.37	4279.23	1409852.44	997445.65	32°23'42.1158"N	102°14'41.6078"W	0.16	
21813.00	90.430	164.850	9564.87	12342.99	-11645.03	4304.17	1409877.38	997353.96	32°23'41.2131"N	102°14'41.2986"W	0.60	
21907.00	89.630	164.520	9564.83	12436.97	-11735.70	4329.00	1409902.22	997263.28	32°23'40.3203"N	102°14'40.9910"W	0.92	

REFERENCE WELLPATH IDENTIFICATION

Operator	Pioneer Natural Resources	Well	University 7-20F No. 6H
Field	Andrews County, TX	API	42-003-48493-0000
Facility	University 7-20 Pad	Wellbore	University 7-20F No. 6H
Slot	University 7-20F No. 6H		

WELLPATH DATA (274 stations)

MD [ft]	Inclination [°]	Azimuth [°]	TVD [ft]	Vert Sect [ft]	North [ft]	East [ft]	Grid East [US ft]	Grid North [US ft]	Latitude	Longitude	DLS [°/100ft]	Comments
22002.00	90.990	165.030	9564.31	12531.94	-11827.36	4353.94	1409927.17	997171.60	32°23'39.4177"N	102°14'40.6817"W	1.53	
22096.00	90.520	164.910	9563.07	12625.92	-11918.13	4378.32	1409951.55	997080.81	32°23'38.5237"N	102°14'40.3793"W	0.52	
22191.00	90.370	168.840	9562.33	12720.89	-12010.63	4399.89	1409973.12	996988.30	32°23'37.6122"N	102°14'40.1093"W	4.14	
22286.00	90.310	166.530	9561.77	12815.83	-12103.44	4420.15	1409993.38	996895.47	32°23'36.6974"N	102°14'39.8544"W	2.43	
22380.00	90.310	166.380	9561.26	12909.83	-12194.82	4442.16	1410015.40	996804.07	32°23'35.7970"N	102°14'39.5794"W	0.16	
22475.00	90.180	166.650	9560.86	13004.82	-12287.20	4464.32	1410037.56	996711.67	32°23'34.8868"N	102°14'39.3026"W	0.32	
22569.00	90.280	166.590	9560.48	13098.81	-12378.65	4486.07	1410059.32	996620.21	32°23'33.9857"N	102°14'39.0306"W	0.12	
22664.00	90.180	166.530	9560.10	13193.80	-12471.05	4508.15	1410081.40	996527.79	32°23'33.0753"N	102°14'38.7547"W	0.12	
22758.00	90.430	164.880	9559.60	13287.80	-12562.13	4531.36	1410104.61	996436.69	32°23'32.1781"N	102°14'38.4658"W	1.78	
22853.00	90.430	164.910	9558.88	13382.78	-12653.85	4556.11	1410129.37	996344.96	32°23'31.2749"N	102°14'38.1588"W	0.03	
22948.00	90.620	164.880	9558.01	13477.76	-12745.56	4580.87	1410154.13	996253.23	32°23'30.3717"N	102°14'37.8517"W	0.20	
23042.00	90.590	164.610	9557.02	13571.74	-12836.24	4605.60	1410178.87	996162.53	32°23'29.4787"N	102°14'37.5452"W	0.29	
23136.00	90.400	164.730	9556.21	13665.71	-12926.90	4630.45	1410203.72	996071.86	32°23'28.5860"N	102°14'37.2373"W	0.24	
23231.00	90.150	164.790	9555.75	13760.69	-13018.55	4655.42	1410228.70	995980.18	32°23'27.6834"N	102°14'36.9278"W	0.27	
23325.00	90.370	164.740	9555.33	13854.68	-13109.25	4680.12	1410253.41	995889.47	32°23'26.7902"N	102°14'36.6216"W	0.24	
23419.00	90.090	164.610	9554.95	13948.65	-13199.91	4704.96	1410278.25	995798.80	32°23'25.8975"N	102°14'36.3137"W	0.33	
23513.00	90.090	166.660	9554.80	14042.65	-13290.96	4728.28	1410301.58	995707.72	32°23'25.0006"N	102°14'36.0236"W	2.18	
23607.00	90.220	167.000	9554.55	14136.63	-13382.49	4749.70	1410323.00	995616.18	32°23'24.0987"N	102°14'35.7555"W	0.39	
23702.00	90.920	169.470	9553.60	14231.54	-13475.48	4769.07	1410342.37	995523.17	32°23'23.1819"N	102°14'35.5111"W	2.70	
23796.00	90.430	169.110	9552.49	14325.37	-13567.84	4786.54	1410359.84	995430.80	32°23'22.2711"N	102°14'35.2889"W	0.65	
23890.00	90.180	168.360	9551.99	14419.25	-13660.02	4804.90	1410378.21	995338.59	32°23'21.3621"N	102°14'35.0564"W	0.84	
23984.00	89.780	164.920	9552.03	14513.23	-13751.47	4826.62	1410399.93	995247.13	32°23'20.4611"N	102°14'34.7848"W	3.68	
24079.00	90.590	164.880	9551.72	14608.21	-13843.18	4851.36	1410424.68	995155.40	32°23'19.5578"N	102°14'34.4779"W	0.85	
24173.00	90.460	165.610	9550.86	14702.20	-13934.08	4875.30	1410448.63	995064.48	32°23'18.6626"N	102°14'34.1806"W	0.79	
24267.00	89.260	164.100	9551.09	14796.18	-14024.81	4899.86	1410473.19	994973.74	32°23'17.7691"N	102°14'33.8761"W	2.05	
24362.00	90.060	165.070	9551.65	14891.16	-14116.39	4925.11	1410498.44	994882.14	32°23'16.8673"N	102°14'33.5633"W	1.32	
24456.00	89.720	164.400	9551.83	14985.14	-14207.07	4949.86	1410523.20	994791.44	32°23'15.9743"N	102°14'33.2566"W	0.80	
24550.00	90.000	164.770	9552.06	15079.11	-14297.69	4974.85	1410548.19	994700.80	32°23'15.0820"N	102°14'32.9472"W	0.49	
24645.00	90.000	164.900	9552.06	15174.09	-14389.38	4999.70	1410573.04	994609.10	32°23'14.1790"N	102°14'32.6391"W	0.14	
24739.00	90.830	164.690	9551.38	15268.07	-14480.09	5024.35	1410597.70	994518.37	32°23'13.2858"N	102°14'32.3335"W	0.91	

REFERENCE WELLPATH IDENTIFICATION

Operator	Pioneer Natural Resources	Well	University 7-20F No. 6H
Field	Andrews County, TX	API	42-003-48493-0000
Facility	University 7-20 Pad	Wellbore	University 7-20F No. 6H
Slot	University 7-20F No. 6H		

WELLPATH DATA (274 stations) † = interpolated, ‡ = extrapolated station

MD [ft]	Inclination [°]	Azimuth [°]	TVD [ft]	Vert Sect [ft]	North [ft]	East [ft]	Grid East [US ft]	Grid North [US ft]	Latitude	Longitude	DLS [°/100ft]	Comments
24833.00	90.650	163.810	9550.17	15362.03	-14570.55	5049.86	1410623.22	994427.89	32°23'12.3951"N	102°14'32.0179"W	0.96	
24927.00	91.110	166.060	9548.72	15456.00	-14661.30	5074.29	1410647.65	994337.12	32°23'11.5013"N	102°14'31.7149"W	2.44	
24994.00	90.590	165.520	9547.73	15522.99	-14726.25	5090.74	1410664.10	994272.17	32°23'10.8616"N	102°14'31.5102"W	1.12	8 1/2" BKR RSS MWD Surveys 7009' - 24994'
25019.00†	90.590	165.520	9547.47	15547.99	-14750.45	5096.99	1410670.35	994247.96	32°23'10.6231"N	102°14'31.4324"W	0.00	Projection to TD

TARGETS

Name	TVD [ft]	North [ft]	East [ft]	Grid East [US ft]	Grid North [US ft]	Latitude	Longitude	Shape
University 7-20F No. 6H LTP/PBHL Rev1	9551.98	-14751.91	5098.84	1410672.20	994246.50	32°23'10.6090"N	102°14'31.4106"W	rectangle
	2D Rectangle 15064 x 100.							
University 7-20F No. 6H POP/FTP Rev1	9552.00	413.12	1287.26	1406859.90	1009414.40	32°25'39.9993"N	102°15'18.9074"W	point

WELLPATH COMPOSITION - Ref Wellbore: University 7-20F No. 6H Ref Wellpath: University 7-20F No. 6H AWP 143' - 24994' Projection: 25019'

Start MD [ft]	End MD [ft]	Positional Uncertainty Model	Log Name/Comment	Wellbore	Survey Date
26.00	1919.00	OWSG MWD rev2 - Standard	MES MWD Surveys from 143' - 1919'	University 7-20F No. 6H	11/24/2022
1919.00	6951.00	OWSG MWD rev2 + IFR1 + Sag + Multi-Station Correction	12 1/4" BKR MWD Surveys 1994' - 6951'	University 7-20F No. 6H	12/2/2022
6951.00	25019.00	OWSG MWD rev2 + IFR1 + Sag + Multi-Station Correction	8 1/2" BKR RSS MWD Surveys 7009' - 24994'	University 7-20F No. 6H	12/2/2022

REFERENCE WELLPATH IDENTIFICATION

Operator	Pioneer Natural Resources	Well	University 7-20F No. 6H
Field	Andrews County, TX	API	42-003-48493-0000
Facility	University 7-20 Pad	Wellbore	University 7-20F No. 6H
Slot	University 7-20F No. 6H		

COMMENTS

Wellpath general comments

Well: University 7-20F 6H
Field: Spraberry (Trend Area)
Rig: H&P 417
Location: Andrews County, TX
API: 42-003-48493-00
Latitude: 32° 25' 35.6917" N
Longitude: 102° 15' 33.8395" W
DF Elevation: 2989.00 ft
Elev. GL: 2963.00 ft
DF: 26.00 ft
Proposed Direction: 165.89°
PBHL: 25019 feet
Duration: 11/25/2022 to 12/8/2022
FSE's: Remote ops
SO#: 111601633

County of Andrews

I, Troy Hammett, MWD Field Service Coordinator, certify that I am employed by Baker Hughes; did conduct or supervise on the day(s) of 11/25/2022 through 12/8/2022 conduct or supervise the taking of a MWD survey from a depth of 1989 feet to a depth of 25019 feet; that the data is true, correct, complete and within the limitations of the tool as set forth by Baker Hughes; that I am authorized and qualified to make this report; that this survey was conducted at the request of Pioneer Natural Res. USA, Inc. for the University 7-20F 6H Well, API No. 42-003-48493-00 in Andrews County, Texas; and that I have reviewed this report and find that it conforms to the principles and procedures as set forth by Baker Hughes.

Troy Hammett

Acting Field Service Coordinator

SO#: 111601633

Baker Hughes 