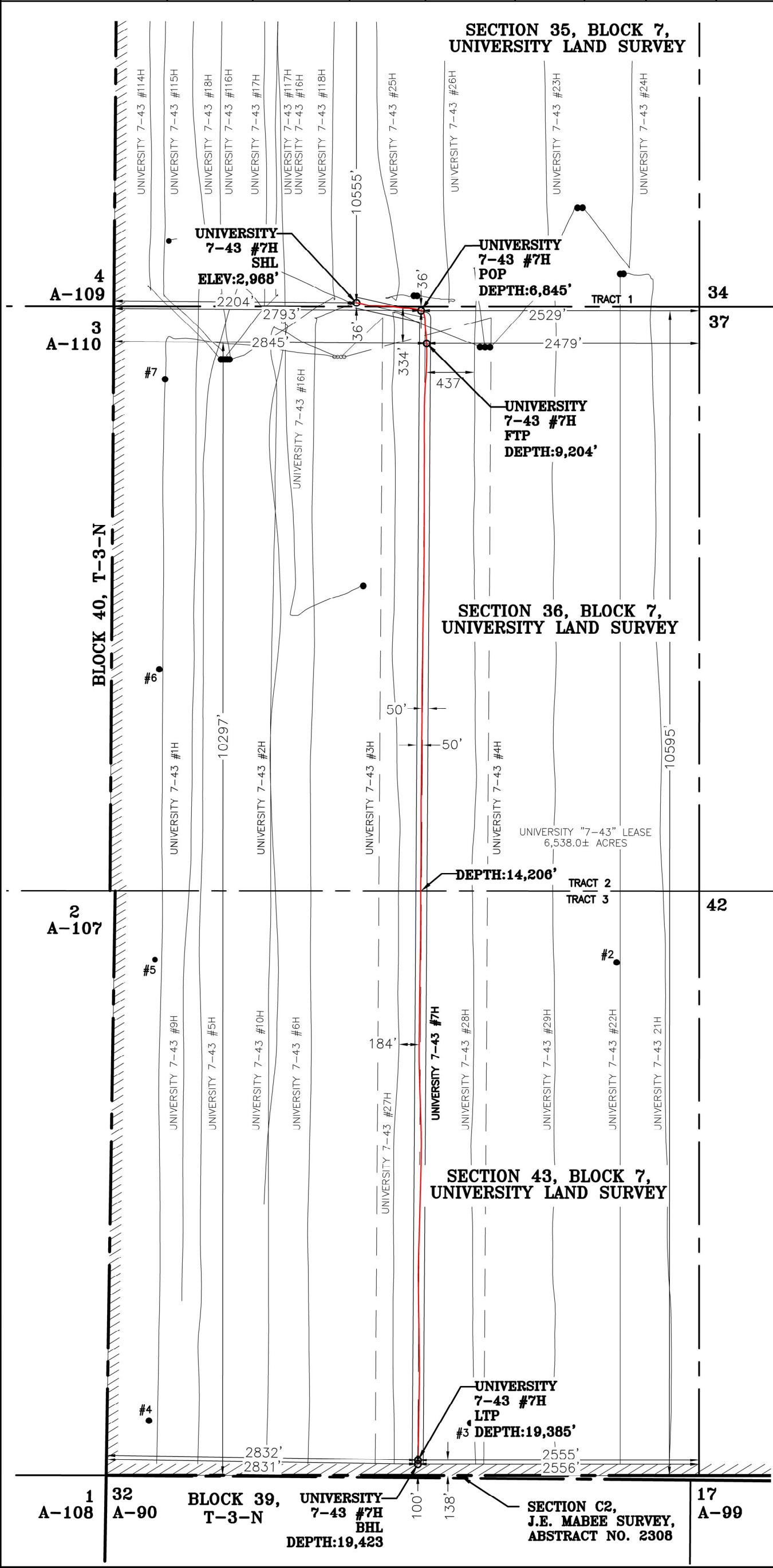


UNIVERSITY 7-43 #7H	EASTING (X) (NAD 27)	NORTHING (Y) (NAD 27)	LATITUDE (NAD 27)	LONGITUDE (NAD 27)	SECTION LINE		SECTION LINE		LEASE LINE		LEASE LINE		SECTION
					FOOTAGE	FNL/FSL	FOOTAGE	FEL\FWL	FOOTAGE	FNL/FSL	FOOTAGE	FEL\FWL	
SURFACE HOLE LOCATION (SHL)	1405443.6	981946.8	32.352235	-102.258300	36'	FSL	2204'	FWL	10555'	FNL	2204'	FWL	35
POINT OF PENETRATION (POP)	1406031.3	982019.9	32.352464	-102.256402	36'	FNL	2529'	FEL	10595'	FSL	2793'	FWL	36
FIRST TAKE POINT (FTP)	1406152.9	981743.8	32.351711	-102.255993	334'	FNL	2479'	FEL	10297'	FSL	2845'	FWL	36
LAST TAKE POINT (LTP)	1408555.2	971872.4	32.324700	-102.247667	138'	FSL	2555'	FEL	138'	FSL	2832'	FWL	43
BOTTOM HOLE LOCATION (BHL)	1408563.5	971835.4	32.324599	-102.247638	100'	FSL	2556'	FEL	100'	FSL	2831'	FWL	43



UNIVERSITY 7-43 #7H		LENGTH
Tract 3		5179
Tract 2		5002
TOTAL PRODUCTIVE LATERAL LENGTH		10181'



Hunter Wade Wills
04/28/2022



SCALE: 1" = 1000'

NOTE: WELL IS LOCATED APPROXIMATELY 17 MILES NORTHEAST OF ANDREWS, ANDREWS COUNTY, TEXAS



3300 NORTH A STREET, BUILDING 2, SUITE 120
MIDLAND, TX 79705-5471
TEL (432) 253-3255
TBPELS SURVEYING FIRM #10193998

DATE: 4/27/2022
BY: R. CABELLO
AVO: 39678.805

LEGEND	
	SECTION LINE
	BLOCK/TOWNSHIP LINE
	LEASE LINE
	SUBJECT LATERAL
	AS-DRILLED LATERAL
	PERMITTED LATERAL
	PROPOSED LATERAL
	PROPOSED WELL
	EXISTING WELL

NOTES:

- THE BASIS OF BEARING OF THE SURVEY IS THE TEXAS COORDINATE SYSTEM, NORTH AMERICAN DATUM 1927 (NAD 27), CENTRAL ZONE (4203).
- ALL TEXAS STATE PLANE COORDINATES AND GEOGRAPHIC COORDINATES SHOWN HEREON ARE NAD 27 GRID COORDINATES AS COMPUTED BY CORPSCON VERSION 6.0.1. ALL GEOGRAPHIC COORDINATES SHOWN HEREON WERE CONVERTED USING CORPSCON VERSION 6.0.1. UNLESS OTHERWISE NOTED, ALL DISTANCES SHOWN HEREON ARE GRID DISTANCES AND THEY CAN BE CONVERTED TO SURFACE WHEN MULTIPLIED WITH A "SURFACE ADJUSTMENT FACTOR" OF 1.000188348, AS CALCULATED BY CORPSCON.
- ELEVATIONS SHOWN HEREON ARE NAVD88 AS DERIVED BY GPS.
- THIS EXHIBIT IS FOR TEXAS RAILROAD COMMISSION WELL PERMITTING PURPOSES ONLY. BOUNDARY LINES AND ACREAGE SHOWN HEREON REFLECT THE SURVEYORS PROFESSIONAL OPINION OF MINERAL RIGHTS AS DETERMINED FROM CLIENT-PROVIDED OIL AND GAS MINERAL LEASE DOCUMENTATION. THE INFORMATION DEPICTED HEREON SHALL NOT BE USED IN THE CONVEYANCE OF FEE TITLE TO REAL PROPERTY.
- ALL MEASUREMENTS TO LEASE, UNIT, AND SURVEY LINES ARE PERPENDICULAR TO SAID LINES.
- THIS SURVEY WAS PREPARED WITHOUT THE BENEFIT OF A TITLE REPORT.
- THE AS-DRILLED DATA USED TO DEPICT THE WELL BORE PATH WAS PROVIDED BY OTHERS. NO WARRANTY IS EITHER EXPRESSED OR IMPLIED AS TO THE ACCURACY OF THE INFORMATION HEREIN.

**PIONEER NATURAL RESOURCES
USA, INC.**

FINAL AS-DRILLED

UNIVERSITY 7-43 #7H

**UNIVERSITY "7-43" LEASE - 6,538.0± ACRES
TOTAL TRACT: 6,538.0± ACRES
(SURFACE AREA)**

**LOCATED IN:
SECTION 35, SECTION 36 & SECTION 43,
BLOCK 7, UNIVERSITY LAND SURVEY,
ANDREWS COUNTY, TEXAS**