



· Directional Drilling      · Horizontal Drilling      · MWD/LWD      · Mud Motors

July 13, 2021

Railroad Commission of Texas  
Oil and Gas Division  
P.O. Box 12967  
Capitol Station  
Austin, Texas 78711

Attention: Pamela Johns

Re: Piedra Operating, LLC  
University 5-39 LS #6H  
Andrews County, Texas  
API No. 42-003-48350

Enclosed, please find the original and one copy of the survey performed on the referenced well by Aim Directional Services, LLC (P-5 No. 009134). Other information required by your office is as follows:

<u>Name &amp; Title</u>	<u>Drainhole Number</u>	<u>Surveyed Depths</u>	<u>Date Performed</u>	<u>Type of Survey</u>
<u>of Surveyor</u> Breana Wooley Performance and Regulatory Manager	Original hole	199' – 8825'	03/09/21 – 03/18/21	MWD

A certified plat on which the bottom hole location is oriented both to the surface location and the lease line (or unit lines in case of pooling) is attached to the survey report. If any other information is required, please contact the undersigned at the letterhead address and phone number.

---

Breana Wooley  
Performance and Regulatory Manager

Enclosures  
cc:



· Directional Drilling      · Horizontal Drilling      · MWD/LWD      · Mud Motors

July 13, 2021

State of Texas  
County of Andrews

I, Breana Wooley, certify that; I am employed by Aim Directional Services, LLC; that I did on the day(s) of March 9, 2021 through March 18, 2021 conduct or supervise the taking of a directional MWD survey from a depth of 199 feet to a depth of 8825 feet; that the data is true, correct, complete and within the limitations of the tool as set forth by Aim Directional Services, LLC; that I am authorized and qualified to make this report; that this survey was conducted at the request of Piedra Operating, LLC for University 5-39 LS#6H API No. 42-003-48350 in Andrews County, Texas; and that I have reviewed this report and find that it conforms to the principles and procedures as set forth by Aim Directional Services, LLC.

---

Breana Wooley  
Performance and Regulatory Manager

<b>Company:</b>	Piedra Operating, LLC	<b>Local Co-ordinate Reference:</b>	Well 6HLS - Office - Slot 6HLS
<b>Project:</b>	Andrews County, Texas	<b>TVD Reference:</b>	3015'GL+31'KB @ 3046.00usft (Lasso 103)
<b>Site:</b>	University 5-39 6HLS	<b>MD Reference:</b>	3015'GL+31'KB @ 3046.00usft (Lasso 103)
<b>Well:</b>	6HLS - Office	<b>North Reference:</b>	Grid
<b>Wellbore:</b>	Drilling	<b>Survey Calculation Method:</b>	Minimum Curvature
<b>Design:</b>	Surveys	<b>Database:</b>	EDMRESTORED

<b>Project</b>	Andrews County, Texas		
<b>Map System:</b>	US State Plane 1983	<b>System Datum:</b>	Mean Sea Level
<b>Geo Datum:</b>	North American Datum 1983		
<b>Map Zone:</b>	Texas North Central Zone		

<b>Site</b>	University 5-39 6HLS		
<b>Site Position:</b>		<b>Northing:</b>	6,859,851.11 usft
<b>From:</b>	Map	<b>Easting:</b>	786,918.89 usft
<b>Position Uncertainty:</b>	0.00 usft	<b>Slot Radius:</b>	13-3/16 "
		<b>Latitude:</b>	32° 25' 37.402 N
		<b>Longitude:</b>	102° 19' 49.143 W
		<b>Grid Convergence:</b>	-2.09 °

<b>Well</b>	6HLS - Office - Slot 6HLS		
<b>Well Position</b>	<b>+N/-S</b>	0.00 usft	<b>Northing:</b> 6,859,851.11 usft
	<b>+E/-W</b>	0.00 usft	<b>Easting:</b> 786,918.89 usft
<b>Position Uncertainty</b>	0.00 usft	<b>Wellhead Elevation:</b>	usft
		<b>Latitude:</b>	32° 25' 37.402 N
		<b>Longitude:</b>	102° 19' 49.143 W
		<b>Ground Level:</b>	3,015.00 usft

<b>Wellbore</b>	Drilling				
<b>Magnetics</b>	<b>Model Name</b>	<b>Sample Date</b>	<b>Declination (°)</b>	<b>Dip Angle (°)</b>	<b>Field Strength (nT)</b>
	MVHD	3/10/2021	5.91	60.06	47,600.286

<b>Design</b>	Surveys				
<b>Audit Notes:</b>					
<b>Version:</b>	1.0	<b>Phase:</b>	ACTUAL	<b>Tie On Depth:</b>	0.00
<b>Vertical Section:</b>	<b>Depth From (TVD) (usft)</b>	<b>+N/-S (usft)</b>	<b>+E/-W (usft)</b>	<b>Direction (°)</b>	
	0.00	0.00	0.00	166.95	

<b>Survey Program</b>	<b>Date</b>	7/13/2021			
<b>From (usft)</b>	<b>To (usft)</b>	<b>Survey (Wellbore)</b>	<b>Tool Name</b>	<b>Description</b>	
199.00	8,825.00	Aim MWD Svys (Drilling)	B001Mb_MWD+HRGM	OWSG MWD + HRGM	

<b>Survey</b>										
<b>Measured Depth (usft)</b>	<b>Inclination (°)</b>	<b>Azimuth (°)</b>	<b>Vertical Depth (usft)</b>	<b>+N/-S (usft)</b>	<b>+E/-W (usft)</b>	<b>Vertical Section (usft)</b>	<b>Dogleg Rate (°/100ft)</b>	<b>Build Rate (°/100ft)</b>	<b>Turn Rate (°/100ft)</b>	
0.00	0.00	0.00	0.00	0.00	0.00	0.00	0.000	0.000	0.000	
199.00	0.35	42.63	199.00	0.45	0.41	-0.34	0.176	0.176	0.000	
<b>First Aim Svy</b>										
309.00	0.40	69.96	309.00	0.83	1.00	-0.58	0.167	0.045	24.845	
400.00	0.88	51.33	399.99	1.37	1.84	-0.92	0.568	0.527	-20.472	
488.00	0.75	53.09	487.98	2.14	2.83	-1.44	0.150	-0.148	2.000	
578.00	0.62	57.83	577.98	2.75	3.72	-1.84	0.157	-0.144	5.267	
671.00	0.66	67.85	670.97	3.22	4.64	-2.09	0.128	0.043	10.774	
766.00	0.70	79.10	765.96	3.54	5.71	-2.16	0.146	0.042	11.842	
860.00	0.53	87.89	859.96	3.66	6.71	-2.05	0.206	-0.181	9.351	
955.00	0.57	99.76	954.95	3.60	7.62	-1.79	0.127	0.042	12.495	

<b>Company:</b>	Piedra Operating, LLC	<b>Local Co-ordinate Reference:</b>	Well 6HLS - Office - Slot 6HLS
<b>Project:</b>	Andrews County, Texas	<b>TVD Reference:</b>	3015'GL+31'KB @ 3046.00usft (Lasso 103)
<b>Site:</b>	University 5-39 6HLS	<b>MD Reference:</b>	3015'GL+31'KB @ 3046.00usft (Lasso 103)
<b>Well:</b>	6HLS - Office	<b>North Reference:</b>	Grid
<b>Wellbore:</b>	Drilling	<b>Survey Calculation Method:</b>	Minimum Curvature
<b>Design:</b>	Surveys	<b>Database:</b>	EDMRESTORED

Survey

Measured Depth (usft)	Inclination (°)	Azimuth (°)	Vertical Depth (usft)	+N/-S (usft)	+E/-W (usft)	Vertical Section (usft)	Dogleg Rate (°/100ft)	Build Rate (°/100ft)	Turn Rate (°/100ft)
1,049.00	0.92	184.48	1,048.95	2.77	8.02	-0.89	1.103	0.372	90.127
1,143.00	0.97	81.48	1,142.94	2.13	8.75	-0.10	1.574	0.053	-109.574
1,238.00	1.01	91.32	1,237.93	2.23	10.38	0.17	0.184	0.042	10.358
1,332.00	0.88	101.87	1,331.91	2.07	11.91	0.68	0.231	-0.138	11.223
1,426.00	0.84	109.34	1,425.90	1.69	13.27	1.35	0.127	-0.043	7.947
1,520.00	0.53	97.74	1,519.90	1.40	14.35	1.87	0.360	-0.330	-12.340
1,615.00	0.75	79.72	1,614.89	1.45	15.40	2.06	0.311	0.232	-18.968
1,709.00	0.79	75.06	1,708.88	1.73	16.63	2.07	0.079	0.043	-4.957
1,801.00	0.70	53.18	1,800.87	2.23	17.69	1.82	0.322	-0.098	-23.783
1,897.00	0.92	345.32	1,896.87	3.33	17.97	0.81	0.961	0.229	-70.687
1,990.00	1.14	315.79	1,989.85	4.71	17.13	-0.72	0.609	0.237	-31.753
2,085.00	1.76	309.99	2,084.82	6.33	15.36	-2.70	0.670	0.653	-6.105
2,179.00	2.68	290.66	2,178.75	8.03	12.19	-5.07	1.249	0.979	-20.564
2,273.00	4.18	280.46	2,272.58	9.43	6.77	-7.66	1.717	1.596	-10.851
2,368.00	5.41	280.11	2,367.25	10.84	-1.05	-10.80	1.295	1.295	-0.368
2,463.00	6.90	279.05	2,461.70	12.53	-11.09	-14.71	1.573	1.568	-1.116
2,557.00	7.96	277.38	2,554.91	14.25	-23.12	-19.10	1.151	1.128	-1.777
2,652.00	8.66	276.68	2,648.91	15.93	-36.75	-23.82	0.744	0.737	-0.737
2,746.00	9.27	274.48	2,741.76	17.34	-51.33	-28.48	0.744	0.649	-2.340
2,841.00	10.37	268.95	2,835.37	17.78	-67.50	-32.57	1.524	1.158	-5.821
2,936.00	11.08	266.49	2,928.71	17.07	-85.16	-35.86	0.889	0.747	-2.589
3,031.00	11.43	265.70	3,021.88	15.80	-103.66	-38.80	0.403	0.368	-0.832
3,126.00	11.74	265.43	3,114.95	14.33	-122.68	-41.66	0.331	0.326	-0.284
3,221.00	11.30	265.87	3,208.03	12.89	-141.60	-44.53	0.472	-0.463	0.463
3,316.00	10.29	264.03	3,301.35	11.33	-159.32	-47.02	1.123	-1.063	-1.937
3,410.00	9.27	261.92	3,393.98	9.40	-175.17	-48.71	1.150	-1.085	-2.245
3,505.00	8.84	264.64	3,487.80	7.64	-190.01	-50.35	0.639	-0.453	2.863
3,600.00	9.01	265.78	3,581.65	6.41	-204.70	-52.47	0.258	0.179	1.200
3,695.00	8.84	265.78	3,675.50	5.33	-219.40	-54.73	0.179	-0.179	0.000
3,788.00	8.57	264.03	3,767.43	4.08	-233.42	-56.68	0.407	-0.290	-1.882
3,882.00	8.40	262.79	3,860.40	2.49	-247.19	-58.24	0.266	-0.181	-1.319
3,977.00	8.26	264.20	3,954.40	0.93	-260.87	-59.81	0.261	-0.147	1.484
4,071.00	7.74	264.11	4,047.48	-0.40	-273.88	-61.45	0.553	-0.553	-0.096
4,167.00	7.12	263.50	4,142.67	-1.74	-286.22	-62.93	0.651	-0.646	-0.635
4,262.00	6.46	265.08	4,237.01	-2.86	-297.40	-64.36	0.722	-0.695	1.663
4,356.00	7.08	265.96	4,330.35	-3.73	-308.45	-66.02	0.669	0.660	0.936
4,451.00	7.08	266.75	4,424.63	-4.47	-320.13	-67.93	0.102	0.000	0.832
4,545.00	7.43	266.22	4,517.87	-5.20	-331.98	-69.90	0.379	0.372	-0.564
4,640.00	7.60	266.93	4,612.06	-5.94	-344.38	-71.97	0.204	0.179	0.747
4,735.00	7.21	268.07	4,706.27	-6.48	-356.61	-74.21	0.439	-0.411	1.200
4,829.00	7.16	266.49	4,799.53	-7.04	-368.36	-76.32	0.217	-0.053	-1.681
4,924.00	6.99	263.94	4,893.80	-8.01	-380.01	-78.01	0.376	-0.179	-2.684
5,018.00	6.51	265.17	4,987.15	-9.06	-391.01	-79.46	0.533	-0.511	1.309

<b>Company:</b>	Piedra Operating, LLC	<b>Local Co-ordinate Reference:</b>	Well 6HLS - Office - Slot 6HLS
<b>Project:</b>	Andrews County, Texas	<b>TVD Reference:</b>	3015'GL+31'KB @ 3046.00usft (Lasso 103)
<b>Site:</b>	University 5-39 6HLS	<b>MD Reference:</b>	3015'GL+31'KB @ 3046.00usft (Lasso 103)
<b>Well:</b>	6HLS - Office	<b>North Reference:</b>	Grid
<b>Wellbore:</b>	Drilling	<b>Survey Calculation Method:</b>	Minimum Curvature
<b>Design:</b>	Surveys	<b>Database:</b>	EDMRESTORED

Survey

Measured Depth (usft)	Inclination (°)	Azimuth (°)	Vertical Depth (usft)	+N/-S (usft)	+E/-W (usft)	Vertical Section (usft)	Dogleg Rate (°/100ft)	Build Rate (°/100ft)	Turn Rate (°/100ft)
5,112.00	6.73	266.84	5,080.53	-9.81	-401.82	-81.17	0.311	0.234	1.777
5,207.00	7.25	269.21	5,174.82	-10.20	-413.37	-83.40	0.626	0.547	2.495
5,302.00	7.47	265.17	5,269.04	-10.81	-425.52	-85.56	0.592	0.232	-4.253
5,396.00	7.69	261.65	5,362.22	-12.23	-437.83	-86.95	0.546	0.234	-3.745
5,489.00	7.47	263.32	5,454.40	-13.84	-449.99	-88.13	0.335	-0.237	1.796
5,583.00	7.74	264.20	5,547.58	-15.19	-462.36	-89.60	0.313	0.287	0.936
5,678.00	7.78	265.43	5,641.71	-16.35	-475.13	-91.36	0.180	0.042	1.295
5,773.00	8.13	266.93	5,735.79	-17.22	-488.25	-93.47	0.428	0.368	1.579
5,868.00	8.53	268.33	5,829.79	-17.79	-502.00	-96.02	0.472	0.421	1.474
5,964.00	8.18	266.05	5,924.77	-18.46	-515.93	-98.51	0.502	-0.365	-2.375
6,059.00	7.69	260.42	6,018.86	-19.99	-528.94	-99.96	0.967	-0.516	-5.926
6,153.00	7.74	258.05	6,112.01	-22.35	-541.33	-100.47	0.343	0.053	-2.521
6,249.00	7.52	260.33	6,207.16	-24.74	-553.85	-100.96	0.390	-0.229	2.375
6,343.00	7.47	262.88	6,300.36	-26.53	-565.98	-101.95	0.358	-0.053	2.713
6,438.00	7.38	263.32	6,394.56	-28.00	-578.17	-103.27	0.112	-0.095	0.463
6,533.00	6.86	264.82	6,488.83	-29.23	-589.88	-104.72	0.581	-0.547	1.579
6,627.00	6.64	267.28	6,582.18	-29.99	-600.90	-106.47	0.386	-0.234	2.617
6,722.00	6.68	267.80	6,676.54	-30.46	-611.90	-108.49	0.076	0.042	0.547
6,817.00	7.03	266.49	6,770.86	-31.03	-623.23	-110.49	0.403	0.368	-1.379
6,912.00	6.95	265.34	6,865.15	-31.86	-634.76	-112.30	0.170	-0.084	-1.211
7,006.00	7.03	264.46	6,958.45	-32.87	-646.15	-113.88	0.142	0.085	-0.936
7,101.00	6.29	269.12	7,052.81	-33.51	-657.14	-115.74	0.964	-0.779	4.905
7,196.00	5.89	272.81	7,147.28	-33.35	-667.21	-118.16	0.589	-0.421	3.884
7,292.00	5.54	275.28	7,242.80	-32.69	-676.75	-120.97	0.446	-0.365	2.573
7,386.00	5.19	274.13	7,336.39	-31.96	-685.51	-123.65	0.389	-0.372	-1.223
7,481.00	5.14	276.24	7,431.00	-31.19	-694.02	-126.33	0.207	-0.053	2.221
7,575.00	4.57	281.08	7,524.67	-30.01	-701.88	-129.25	0.746	-0.606	5.149
7,671.00	4.13	282.31	7,620.39	-28.54	-709.01	-132.29	0.468	-0.458	1.281
7,765.00	3.56	283.45	7,714.18	-27.14	-715.16	-135.04	0.612	-0.606	1.213
7,859.00	3.03	283.63	7,808.02	-25.88	-720.41	-137.46	0.564	-0.564	0.191
7,955.00	2.68	280.99	7,903.90	-24.85	-725.08	-139.52	0.389	-0.365	-2.750
8,050.00	2.42	279.14	7,998.81	-24.11	-729.24	-141.18	0.287	-0.274	-1.947
8,145.00	2.15	277.91	8,093.73	-23.55	-732.99	-142.57	0.289	-0.284	-1.295
8,240.00	1.93	272.02	8,188.67	-23.24	-736.35	-143.63	0.320	-0.232	-6.200
8,335.00	1.45	264.82	8,283.63	-23.30	-739.15	-144.21	0.552	-0.505	-7.579
8,430.00	1.27	261.48	8,378.60	-23.56	-741.39	-144.45	0.207	-0.189	-3.516
8,525.00	1.10	258.66	8,473.58	-23.90	-743.32	-144.56	0.189	-0.179	-2.968
8,620.00	0.75	249.17	8,568.57	-24.30	-744.80	-144.51	0.401	-0.368	-9.989
8,715.00	0.92	231.07	8,663.56	-25.00	-745.97	-144.09	0.328	0.179	-19.053
8,746.00	0.92	236.16	8,694.56	-25.29	-746.37	-143.89	0.264	0.000	16.419
<b>Last Aim Svy</b>									
8,825.00	0.92	236.16	8,773.55	-26.00	-747.42	-143.44	0.000	0.000	0.000
<b>Projection to BHL</b>									

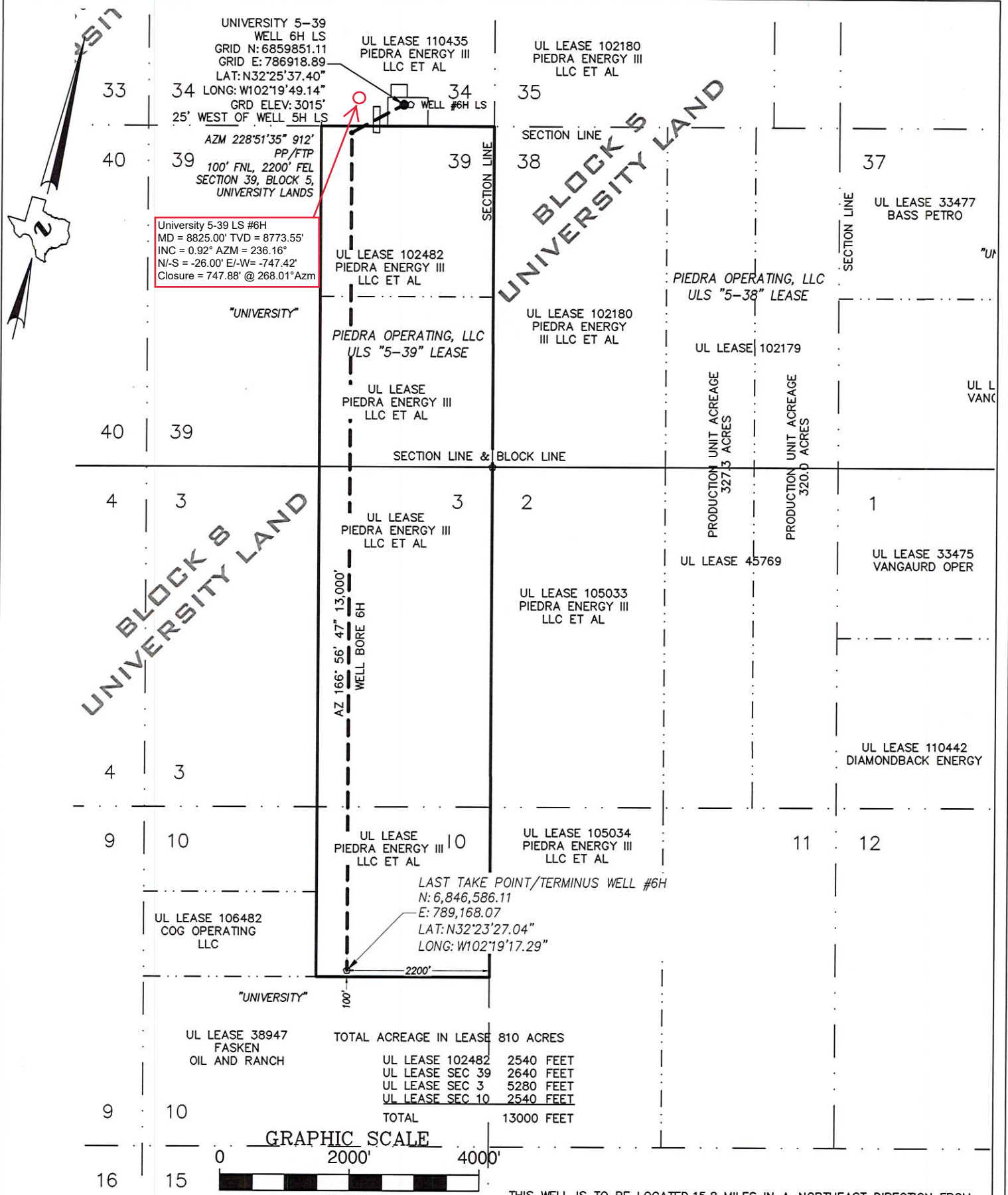
<b>Company:</b>	Piedra Operating, LLC	<b>Local Co-ordinate Reference:</b>	Well 6HLS - Office - Slot 6HLS
<b>Project:</b>	Andrews County, Texas	<b>TVD Reference:</b>	3015'GL+31'KB @ 3046.00usft (Lasso 103)
<b>Site:</b>	University 5-39 6HLS	<b>MD Reference:</b>	3015'GL+31'KB @ 3046.00usft (Lasso 103)
<b>Well:</b>	6HLS - Office	<b>North Reference:</b>	Grid
<b>Wellbore:</b>	Drilling	<b>Survey Calculation Method:</b>	Minimum Curvature
<b>Design:</b>	Surveys	<b>Database:</b>	EDMRESTORED

#### Survey Annotations

Measured Depth (usft)	Vertical Depth (usft)	Local Coordinates		Comment
		+N/-S (usft)	+E/-W (usft)	
199.00	199.00	0.45	0.41	First Aim Svy
8,746.00	8,694.56	-25.29	-746.37	Last Aim Svy
8,825.00	8,773.55	-26.00	-747.42	Projection to BHL

Checked By: \_\_\_\_\_ Approved By: \_\_\_\_\_ Date: \_\_\_\_\_



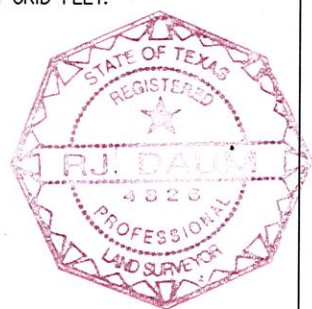


NOTE:  
COURSES, DISTANCES AND COORDINATES SHOWN HEREON ARE  
LAMBERT GRID AND CONFORM TO THE "TEXAS COORDINATE SYSTEM",  
TEXAS NORTH CENTRAL ZONE, NORTH AMERICAN DATUM OF 1983.  
ALL DISTANCES AND COORDINATES ARE SHOWN IN GRID FEET.  
ELEVATION NAVD 1988

THE UNDERSIGNED DOES HEREBY CERTIFY  
THAT THIS LOCATION WAS THIS DAY MADE  
ON THE GROUND BY ME OR UNDER MY  
SUPERVISION AND THAT THIS PLAT IS A  
CORRECT REPRESENTATION THEREOF.

DATED THIS 11TH DAY OF JANUARY, 2021

RJ DAUM  
TEXAS RPLS 4826



**SCHUMANN**  
ENGINEERING CO.  
A LATERAL LAND COMPANY

CIVIL ENGINEERING - LAND SURVEYING  
TEXAS FIRM No. F1880 - TEXAS FIRM No. 10149500

800 N. MARIENFELD STREET  
SUITE 100  
MIDLAND, TEXAS 79701

Office (432) 684-5548

## LOCATION PLAT

PIEDRA OPERATING L.L.C.

WELL NO. 6H LS  
UNIVERSITY 5-39

SURFACE HOLE  
330 FEET FROM THE SOUTH AND  
1370 FEET FROM THE EAST LINES  
SECTION 34, BLOCK 5,  
LAST TAKE/TERMINUS  
2540 FEET FROM THE NORTH AND  
1320 FEET FROM THE EAST LINES  
SECTION 10, BLOCK 8,  
UNIVERSITY LAND  
ANDREWS COUNTY, TEXAS

QUAD: FIVE WELLS RANCH PROJECT: 77771PO  
SCALE: 1" = 2000' REV 1-13-21 JOB NO: 77,771-C