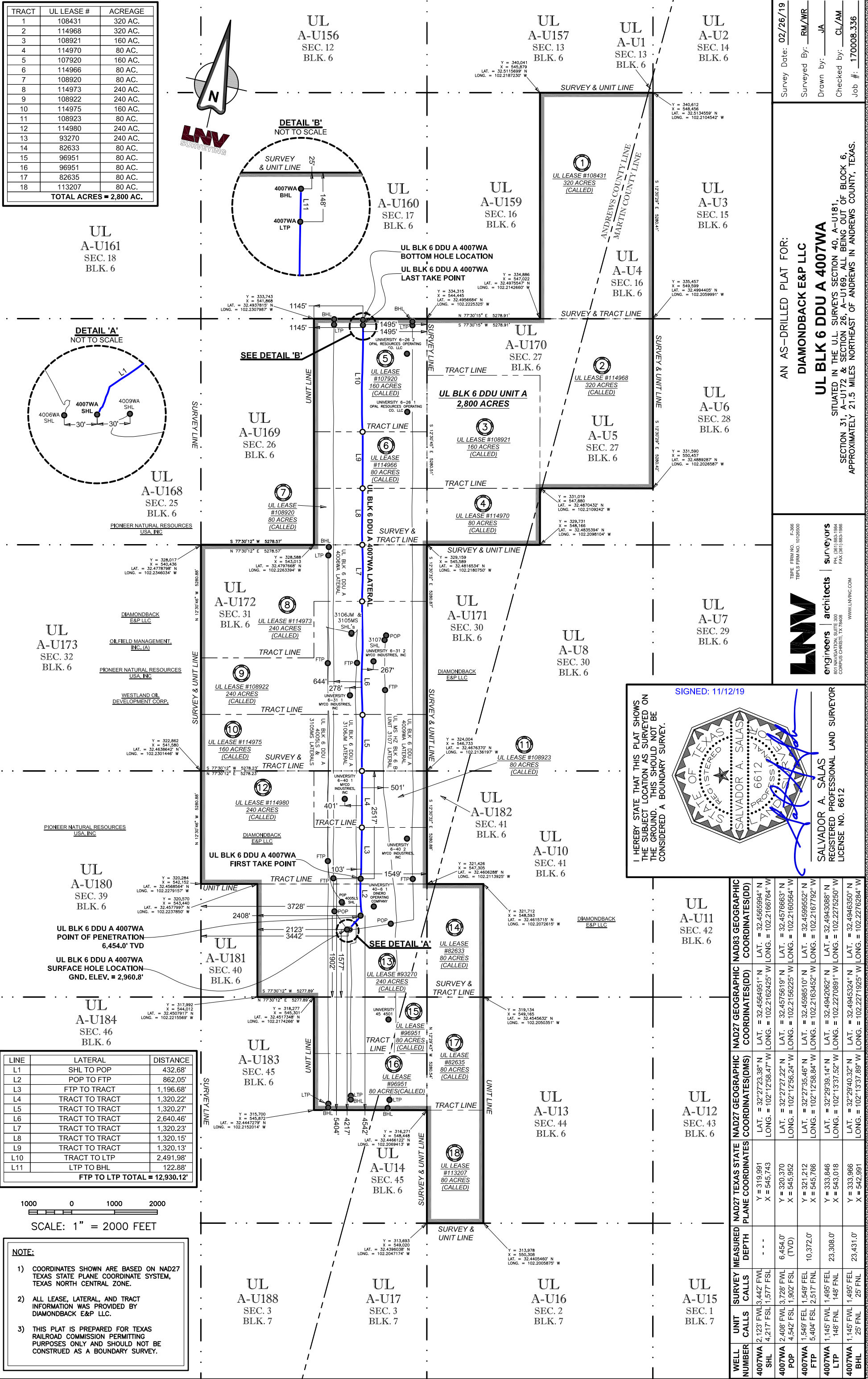
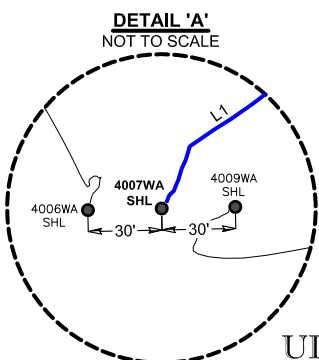
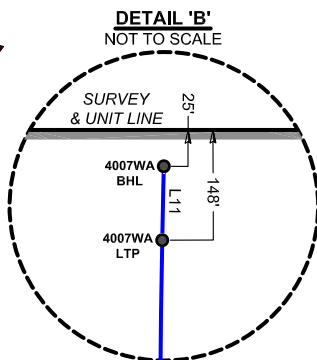


TRACT	UL LEASE #	ACREAGE
1	108431	320 AC.
2	114968	320 AC.
3	108921	160 AC.
4	114970	80 AC.
5	107920	160 AC.
6	114966	80 AC.
7	108920	80 AC.
8	114973	240 AC.
9	108922	240 AC.
10	114975	160 AC.
11	108923	80 AC.
12	114980	240 AC.
13	93270	240 AC.
14	82633	80 AC.
15	96951	80 AC.
16	96951	80 AC.
17	82635	80 AC.
18	113207	80 AC.
TOTAL ACRES = 2,800 AC.		



Survey Date: 02/26/19

Surveyed By: RM/WR

Drawn by: JA

Checked by: CL/AM

Job #: 170008.336

AN AS-DRILLED PLAT FOR:

DIAMONDBACK E&P LLC

UL BLK 6 DDU A 4007WA

SITUATED IN THE U.L. SURVEYS SECTION 40, A-U181, SECTION 31, A-U172 & SECTION 26, A-U169, ALL BEING OUT OF BLOCK 6, APPROXIMATELY 21.5 MILES NORTHEAST OF ANDREWS IN ANDREWS COUNTY, TEXAS.

TEDE FIRM NO. E-386
TBL FIRM NO. 10126000

LNV engineers | architects | surveyors

801 NAVIGATION SUITE 300
CORPUS CHRISTI, TX 78408

WWW.LNVINC.COM

I HEREBY STATE THAT THIS PLAT SHOWS THE SUBJECT LOCATION AS SURVEYED ON THE GROUND. THIS SHOULD NOT BE CONSIDERED A BOUNDARY SURVEY.

SIGNED: 11/12/19

SALVADOR A. SALAS
REGISTERED PROFESSIONAL LAND SURVEYOR
LICENSE NO. 6612

WELL NUMBER	UNIT	CALLS	DEPTH	NAD27 TEXAS STATE PLANE COORDINATES	NAD27 GEOGRAPHIC COORDINATES(DMS)	NAD83 GEOGRAPHIC COORDINATES(DD)
4007WA SHL	2,123' FWL	3,442' FSL	4,217' FSL	Y = 319,991 X = 545,743	LAT. = 32°27'23.38" N LONG. = 102°12'58.58" W	LAT. = 32.45645651° N LONG. = 102.21605054° W
4007WA POP	2,408' FWL	3,728' FSL	4,542' FSL	Y = 320,370 X = 545,952	LAT. = 32°27'27.22" N LONG. = 102°12'58.22" W	LAT. = 32.45676693° N LONG. = 102.21605054° W
4007WA FTP	1,549' FWL	2,517' FSL	10,372.0' (TVD)	Y = 321,212 X = 545,952	LAT. = 32°27'27.22" N LONG. = 102°12'58.22" W	LAT. = 32.45676693° N LONG. = 102.21605054° W
4007WA LTP	1,145' FWL	1,485' FSL	23,308.0'	Y = 321,212 X = 543,018	LAT. = 32°27'27.22" N LONG. = 102°12'58.22" W	LAT. = 32.45676693° N LONG. = 102.21605054° W
4007WA BHL	1,145' FWL	2,517' FSL	23,431.0'	Y = 321,212 X = 542,891	LAT. = 32°27'27.22" N LONG. = 102°12'58.22" W	LAT. = 32.45676693° N LONG. = 102.21605054° W