

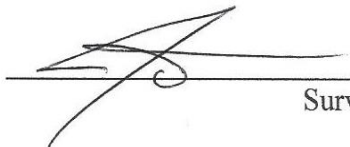
Calculation Method Minimum Curvature
Proposed Azimuth _____
Dip Angle: _____
Field Strength: _____

[illegible]

RB Directional Services, LLC

Oil Company: DIAMONDBACK E&P LLC
Referenced Well: UL BLK 6 DDU A #4006WA
API #: 42-003-47993
County: ANDREWS
Dates Ran: From: 02/16/19 To: 02/18/19
Depths Ran: From: 135 To: 1782
Surveyor / Supervisor: John Wyatt

I, John Wyatt, certify that RB Directional Services supervised the taking of surveys on the above referenced well. The surveys on the dates stated, the data is true and correct, completed and within the limitations of the tool as set forth by RB Directional Services; that I am authorized and qualified to make this report and that I have reviewed this report and find it conforms to the principles and procedures as set forth RB Directional Services.



Surveyor

Railroad Commission of Texas
Oil & Gas Division
P.O. Box 12967
Capitol Station
Austin, Texas 78711

RE: DIAMONDBACK E&P LLC
UL BLK 6 DDU A #4006WA
SPRABERRY (TREND AREA)
Survey: 0 Abstract: 0
County: Midland
API #: 42-003-47993

To whom it concerns:

Please find the Surveys(s) and other information, required by your office, being submitted by RB Directional Services (P-5 No 685774) for the above referenced well.

Name:	Heather Sanders	Drain hole Number:	Original
Title:	Vice President	Type Survey:	MWD
Start Date:	16-Feb-19	Survey Start Depth:	135
End Date:	18-Feb-19	Survey End Depth:	1782

A certified plat with a Bottom Hole Location plotted on such plat. Data is oriented both to surface hole location and lease lines.
If any other information is required please contact RB Directional Services at the Footnote address and phone number.



RB Directional Services
PO Box 36
Water Valley, TX 76958
Ph. 432-254-2880
Email: rbdirectionalservices@gmail.com

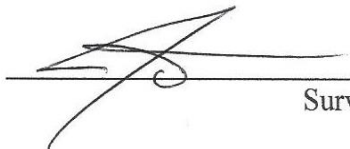
Calculation Method Minimum Curvature
 Proposed Azimuth _____
 Dip Angle: _____
 Field Strength: _____

[illegible]

RB Directional Services, LLC

Oil Company: DIAMONDBACK E&P LLC
Referenced Well: UL BLK 6 DDU A #4006WA
API #: 42-003-47993
County: ANDREWS
Dates Ran: From: 02/22/19 To: 02/24/19
Depths Ran: From: 106 To: 1790
Surveyor / Supervisor: John Wyatt

I, John Wyatt, certify that RB Directional Services supervised the taking of surveys on the above referenced well. The surveys on the dates stated, the data is true and correct, completed and within the limitations of the tool as set forth by RB Directional Services; that I am authorized and qualified to make this report and that I have reviewed this report and find it conforms to the principles and procedures as set forth RB Directional Services.



Surveyor

Railroad Commission of Texas
Oil & Gas Division
P.O. Box 12967
Capitol Station
Austin, Texas 78711

RE: DIAMONDBACK E&P LLC
UL BLK 6 DDU A #4006WA
SPRABERRY (TREND AREA)
Survey: 0 Abstract: 0
County: Midland
API #: 42-003-47993

To whom it concerns:

Please find the Surveys(s) and other information, required by your office, being submitted by RB Directional Services (P-5 No 685774) for the above referenced well.

Name:	Heather Sanders	Drain hole Number:	Original
Title:	Vice President	Type Survey:	MWD
Start Date:	22-Feb-19	Survey Start Depth:	106
End Date:	24-Feb-19	Survey End Depth:	1790

A certified plat with a Bottom Hole Location plotted on such plat. Data is oriented both to surface hole location and lease lines.
If any other information is required please contact RB Directional Services at the Footnote address and phone number.



RB Directional Services
PO Box 36
Water Valley, TX 76958
Ph. 432-254-2880
Email: rbdirectionalservices@gmail.com



Diamondback Energy

Andrews County, Texas

UL A-U181, Sec 40, Blk 6

UL Blk 6 DDU A 4006WA

Wellbore #1

Design: Wellbore #1

QES Survey Certification Report

14 April, 2019



QES Directional Drilling, Inc.

11390 FM 830

Willis, TX 77318

Phone: (936) 856-4332

Fax: (936) 856-8678



4/17/2019

Railroad Commission of Texas
Oil and Gas Division
1701 North Congress Avenue
Austin, Texas 78711

Attention: Pam Johns

Re: Diamondback Energy
UL BLK 6 DDU A 4006WA
RRC Lease/ID No.
UL
Abstract No. U181
Andrews County, Texas
API No. 42-003-47993

Enclosed, please find the original and one (1) copy of the survey performed on the referenced well by QES Directional Drilling, Inc. (P5#684437). Other information required by your office is as follows:

Name of Surveyor	Drainhole Number	Surveyed Depths	Dates Performed	Type of Survey
Tel Williams	Original Hole	1813'-23353'	03/26/2019-04/14/2019	MWD

A certified plat on which the bottom hole location is oriented both to the surface location and to the lease lines (or unit lines in case of pooling) is attached to the survey report. If any other information is required, please contact the undersigned at the letterhead address and phone number.

Sincerely,

Christopher Hughes
MWD Compliance Manager
QES Directional Drilling, Inc.

Enclosures
Cc: Diamondback Energy



QES Survey Certification Report



Company:	Diamondback Energy	Local Co-ordinate Reference:	Well UL Blk 6 DDU A 4006WA
Project:	Andrews County, Texas	TVD Reference:	RKB @ 2984.0usft (Cactus #170)
Site:	UL A-U181, Sec 40, Blk 6	MD Reference:	RKB @ 2984.0usft (Cactus #170)
Well:	UL Blk 6 DDU A 4006WA	North Reference:	Grid
Wellbore:	Wellbore #1	Survey Calculation Method:	Minimum Curvature
Design:	Wellbore #1	Database:	EDM 5000.1 Single User Db

Project	Andrews County, Texas		
Map System:	US State Plane 1927 (Exact solution)	System Datum:	Mean Sea Level
Geo Datum:	NAD 1927 (NADCON CONUS)		
Map Zone:	Texas North Central 4202		

Site		ULA-U181, Sec 40, Blk 6			
Site Position:		Northing:	319,998.00 usft	Latitude:	32° 27' 23.464 N
From:	Map	Easting:	545,772.00 usft	Longitude:	102° 12' 58.141 W
Position Uncertainty:	0.0 usft	Slot Radius:	13-3/16 "	Grid Convergence:	-2.57 °

Well	UL Blk 6 DDU A 4006WA					
Well Position	+N/-S	0.0 usft	Northing:	319,984.00 usft	Latitude:	32° 27' 23.300 N
	+E/-W	0.0 usft	Easting:	545,714.00 usft	Longitude:	102° 12' 58.810 W
Position Uncertainty		0.0 usft	Wellhead Elevation:	usft	Ground Level:	2,961.0 usft

Wellbore	Wellbore #1				
Magnetics	Model Name	Sample Date	Declination (°)	Dip Angle (°)	Field Strength (nT)
	User Defined	3/30/2019	6.19	60.17	47,862.80000000

Design	Wellbore #1			
Audit Notes:				
Version:	1.0	Phase:	ACTUAL	Tie On Depth: 0.0
Vertical Section:	Depth From (TVD) (usft)	+N/-S (usft)	+E/-W (usft)	Direction (°)
	0.0	0.0	0.0	347.49

Survey Program	Date	4/14/2019			
From (usft)	To (usft)	Survey (Wellbore)	Tool Name	Description	
129.0	1,813.0	Spudder Surveys (Wellbore #1)	MWD Default	OWSG MWD - Standard	
1,898.0	23,353.0	Superior FDIR - Full Report (Wellbore #1)	MWD+IFR1+SAG+MS	OWSG MWD + IFR1 + Sag + Multi-Station Correction	

Survey								
MD (usft)	Inc (°)	Azi (azimuth) (°)	TVD (usft)	N/S (usft)	E/W (usft)	Closure Distance (usft)	Closure Azimuth (°)	
1,813.0	0.25	131.74	1,812.9	7.2	-1.1	7.2	351.26	
Tie In @ 1813.0'MD / 1812.9' TVD								
1,898.0	0.51	191.83	1,897.9	6.7	-1.0	6.7	351.13	
1,993.0	0.40	278.07	1,992.9	6.3	-1.5	6.5	346.99	
2,089.0	1.12	316.94	2,088.9	7.0	-2.4	7.4	340.95	
2,183.0	2.16	321.67	2,182.9	9.1	-4.2	10.0	335.45	
2,279.0	3.48	320.80	2,278.7	12.8	-7.1	14.6	330.87	
2,374.0	4.40	319.37	2,373.5	17.8	-11.3	21.1	327.52	
2,469.0	5.49	317.65	2,468.2	23.9	-16.7	29.2	324.97	
2,564.0	6.73	312.30	2,562.6	31.0	-23.9	39.2	322.34	
2,659.0	7.87	310.52	2,656.9	39.0	-33.0	51.1	319.75	



QES Survey Certification Report



Company:	Diamondback Energy	Local Co-ordinate Reference:	Well UL Blk 6 DDU A 4006WA
Project:	Andrews County, Texas	TVD Reference:	RKB @ 2984.0usft (Cactus #170)
Site:	UL A-U181, Sec 40, Blk 6	MD Reference:	RKB @ 2984.0usft (Cactus #170)
Well:	UL Blk 6 DDU A 4006WA	North Reference:	Grid
Wellbore:	Wellbore #1	Survey Calculation Method:	Minimum Curvature
Design:	Wellbore #1	Database:	EDM 5000.1 Single User Db

Survey								
MD (usft)	Inc (°)	Azi (azimuth) (°)	TVD (usft)	N/S (usft)	E/W (usft)	Closure Distance (usft)	Closure Azimuth (°)	
2,754.0	7.96	310.62	2,750.9	47.5	-42.9	64.0	317.88	
2,849.0	7.91	311.82	2,845.0	56.1	-52.8	77.0	316.75	
2,944.0	7.75	310.97	2,939.2	64.7	-62.5	89.9	315.98	
3,039.0	7.73	310.47	3,033.3	73.0	-72.2	102.7	315.33	
3,134.0	7.57	309.93	3,127.4	81.2	-81.9	115.3	314.77	
3,229.0	7.22	311.26	3,221.7	89.1	-91.1	127.5	314.37	
3,325.0	8.12	312.43	3,316.8	97.7	-100.7	140.3	314.14	
3,420.0	8.63	312.05	3,410.8	107.0	-110.9	154.1	313.97	
3,515.0	8.45	311.45	3,504.7	116.4	-121.4	168.2	313.78	
3,610.0	8.35	311.09	3,598.7	125.5	-131.9	182.1	313.59	
3,705.0	8.14	311.05	3,692.7	134.5	-142.1	195.7	313.42	
3,800.0	8.21	310.94	3,786.8	143.4	-152.3	209.2	313.26	
3,895.0	8.09	310.74	3,880.8	152.2	-162.5	222.6	313.11	
3,989.0	8.35	313.09	3,973.8	161.1	-172.5	236.1	313.05	
4,084.0	8.22	313.47	4,067.8	170.5	-182.5	249.8	313.06	
4,179.0	7.81	313.12	4,161.9	179.6	-192.1	263.0	313.07	
4,274.0	8.16	314.22	4,256.0	188.7	-201.7	276.2	313.10	
4,369.0	7.93	315.30	4,350.1	198.1	-211.1	289.5	313.18	
4,464.0	8.29	311.67	4,444.1	207.3	-220.8	302.9	313.19	
4,559.0	8.02	311.24	4,538.1	216.2	-230.9	316.4	313.11	
4,654.0	7.17	311.75	4,632.3	224.5	-240.4	328.9	313.05	
4,748.0	7.05	313.06	4,725.6	232.4	-248.9	340.5	313.03	
4,843.0	6.80	312.00	4,819.9	240.1	-257.4	352.0	313.01	
4,938.0	6.71	312.25	4,914.2	247.6	-265.7	363.2	312.99	
5,036.0	6.39	314.36	5,011.6	255.3	-273.8	374.4	312.99	
5,131.0	6.31	313.99	5,106.0	262.6	-281.3	384.9	313.03	
5,226.0	6.37	314.01	5,200.4	269.9	-288.9	395.3	313.05	
5,321.0	6.14	313.28	5,294.9	277.0	-296.4	405.7	313.07	
5,416.0	5.97	313.37	5,389.3	283.9	-303.7	415.7	313.07	
5,511.0	6.92	313.65	5,483.7	291.3	-311.4	426.4	313.09	
5,606.0	6.67	314.60	5,578.1	299.1	-319.5	437.6	313.11	
5,700.0	6.39	313.21	5,671.5	306.5	-327.2	448.3	313.13	
5,795.0	6.32	311.92	5,765.9	313.6	-334.9	458.8	313.12	
5,890.0	6.16	312.40	5,860.3	320.5	-342.6	469.1	313.10	
5,985.0	6.16	312.42	5,954.8	327.4	-350.1	479.3	313.08	
6,081.0	6.08	310.96	6,050.2	334.2	-357.7	489.6	313.05	
6,175.0	5.50	309.88	6,143.7	340.4	-365.0	499.0	313.00	
6,270.0	4.30	308.83	6,238.4	345.5	-371.2	507.1	312.95	
6,365.0	3.53	311.67	6,333.2	349.7	-376.2	513.6	312.91	
6,460.0	2.32	316.14	6,428.0	353.0	-379.7	518.5	312.92	
6,515.0	2.21	315.97	6,483.0	354.6	-381.2	520.6	312.93	
6,589.0	2.32	314.82	6,556.9	356.7	-383.3	523.6	312.94	
6,684.0	1.72	314.34	6,651.9	359.0	-385.6	526.9	312.95	
6,780.0	1.35	312.44	6,747.8	360.8	-387.5	529.5	312.96	



QES Survey Certification Report



Company:	Diamondback Energy	Local Co-ordinate Reference:	Well UL Blk 6 DDU A 4006WA
Project:	Andrews County, Texas	TVD Reference:	RKB @ 2984.0usft (Cactus #170)
Site:	UL A-U181, Sec 40, Blk 6	MD Reference:	RKB @ 2984.0usft (Cactus #170)
Well:	UL Blk 6 DDU A 4006WA	North Reference:	Grid
Wellbore:	Wellbore #1	Survey Calculation Method:	Minimum Curvature
Design:	Wellbore #1	Database:	EDM 5000.1 Single User Db

Survey								
MD (usft)	Inc (°)	Azi (azimuth) (°)	TVD (usft)	N/S (usft)	E/W (usft)	Closure Distance (usft)	Closure Azimuth (°)	
6,875.0	1.14	319.21	6,842.8	362.3	-389.0	531.5	312.97	
6,970.0	0.67	318.03	6,937.8	363.4	-389.9	533.0	312.98	
7,064.0	0.60	330.84	7,031.8	364.2	-390.5	534.0	313.00	
7,158.0	0.51	329.29	7,125.8	365.0	-391.0	534.9	313.03	
7,252.0	0.48	311.69	7,219.8	365.6	-391.5	535.7	313.04	
7,348.0	0.22	312.74	7,315.8	366.0	-391.9	536.3	313.04	
7,443.0	0.19	311.79	7,410.8	366.3	-392.2	536.6	313.04	
7,538.0	0.13	11.70	7,505.8	366.5	-392.3	536.8	313.05	
7,633.0	0.18	354.90	7,600.8	366.7	-392.3	537.0	313.07	
7,728.0	0.12	318.18	7,695.8	367.0	-392.4	537.2	313.08	
7,823.0	0.23	27.00	7,790.8	367.2	-392.3	537.4	313.10	
7,918.0	1.00	48.61	7,885.8	367.9	-391.6	537.3	313.21	
8,013.0	0.94	47.14	7,980.8	369.0	-390.4	537.2	313.38	
8,108.0	0.95	53.05	8,075.8	370.0	-389.2	537.0	313.55	
8,203.0	1.15	54.61	8,170.7	371.0	-387.8	536.7	313.73	
8,298.0	1.00	70.02	8,265.7	371.9	-386.3	536.2	313.91	
8,393.0	0.82	93.18	8,360.7	372.1	-384.8	535.3	314.04	
8,488.0	0.92	191.48	8,455.7	371.3	-384.3	534.4	314.02	
8,582.0	0.98	187.85	8,549.7	369.8	-384.6	533.5	313.88	
8,677.0	0.97	252.73	8,644.7	368.7	-385.4	533.4	313.73	
8,772.0	0.96	236.83	8,739.7	368.1	-386.9	534.0	313.57	
8,867.0	0.89	232.18	8,834.7	367.2	-388.1	534.3	313.41	
8,962.0	0.83	220.47	8,929.7	366.2	-389.1	534.4	313.26	
9,057.0	0.90	220.10	9,024.6	365.1	-390.1	534.3	313.11	
9,077.0	0.98	216.84	9,044.6	364.9	-390.3	534.3	313.07	
9,172.0	5.29	329.00	9,139.5	368.0	-393.0	538.4	313.11	
9,219.0	11.51	340.06	9,186.0	374.2	-395.7	544.7	313.40	
9,267.0	17.69	345.06	9,232.4	385.8	-399.3	555.2	314.02	
9,362.0	20.16	342.30	9,322.3	415.3	-408.0	582.2	315.51	
9,457.0	23.60	341.26	9,410.4	449.0	-419.0	614.1	316.97	
9,552.0	29.27	344.11	9,495.5	489.3	-431.5	652.4	318.59	
9,648.0	40.76	350.88	9,574.0	543.0	-443.0	700.8	320.80	
9,742.0	49.41	348.73	9,640.3	608.5	-454.8	759.7	323.22	
9,837.0	57.16	346.56	9,697.0	682.8	-471.2	829.6	325.39	
9,932.0	64.59	346.05	9,743.2	763.4	-490.8	907.5	327.26	
10,027.0	71.20	345.61	9,779.0	848.6	-512.4	991.3	328.88	
10,122.0	78.57	346.34	9,803.7	937.6	-534.6	1,079.3	330.31	
10,217.0	83.51	347.86	9,818.5	1,029.0	-555.5	1,169.4	331.64	
10,312.0	87.52	348.18	9,825.9	1,121.6	-575.2	1,260.5	332.85	
10,406.0	87.90	347.57	9,829.7	1,213.5	-594.9	1,351.4	333.88	
10,502.0	87.11	346.80	9,833.9	1,307.0	-616.2	1,444.9	334.76	
10,597.0	87.27	346.76	9,838.5	1,399.4	-637.9	1,537.9	335.50	
10,691.0	89.12	346.91	9,841.5	1,490.8	-659.2	1,630.1	336.14	
10,786.0	88.74	345.29	9,843.3	1,583.0	-682.1	1,723.7	336.69	
10,881.0	89.41	346.96	9,844.8	1,675.2	-704.8	1,817.5	337.18	



QES Survey Certification Report



Company:	Diamondback Energy	Local Co-ordinate Reference:	Well UL Blk 6 DDU A 4006WA
Project:	Andrews County, Texas	TVD Reference:	RKB @ 2984.0usft (Cactus #170)
Site:	UL A-U181, Sec 40, Blk 6	MD Reference:	RKB @ 2984.0usft (Cactus #170)
Well:	UL Blk 6 DDU A 4006WA	North Reference:	Grid
Wellbore:	Wellbore #1	Survey Calculation Method:	Minimum Curvature
Design:	Wellbore #1	Database:	EDM 5000.1 Single User Db

Survey							
MD (usft)	Inc (°)	Azi (azimuth) (°)	TVD (usft)	N/S (usft)	E/W (usft)	Closure Distance (usft)	Closure Azimuth (°)
10,975.0	90.35	349.18	9,845.0	1,767.2	-724.3	1,909.9	337.71
11,070.0	90.37	349.13	9,844.4	1,860.5	-742.1	2,003.1	338.25
11,165.0	91.07	350.53	9,843.2	1,954.0	-758.9	2,096.2	338.77
11,261.0	88.43	348.96	9,843.6	2,048.5	-776.0	2,190.5	339.25
11,355.0	88.11	348.25	9,846.5	2,140.6	-794.6	2,283.3	339.64
11,449.0	88.43	347.67	9,849.3	2,232.5	-814.2	2,376.3	339.96
11,544.0	88.85	346.44	9,851.6	2,325.0	-835.4	2,470.6	340.24
11,638.0	90.05	346.08	9,852.5	2,416.3	-857.8	2,564.1	340.46
11,732.0	90.19	346.74	9,852.3	2,507.7	-879.9	2,657.6	340.67
11,828.0	91.21	348.32	9,851.1	2,601.4	-900.6	2,752.9	340.90
11,922.0	92.23	347.70	9,848.3	2,693.3	-920.1	2,846.1	341.14
12,017.0	90.77	347.41	9,845.8	2,786.0	-940.6	2,940.5	341.35
12,112.0	89.88	348.45	9,845.3	2,878.9	-960.4	3,034.9	341.55
12,207.0	90.30	347.77	9,845.1	2,971.9	-980.0	3,129.3	341.75
12,302.0	90.14	347.11	9,844.7	3,064.6	-1,000.7	3,223.9	341.92
12,397.0	90.60	346.18	9,844.1	3,157.1	-1,022.6	3,318.5	342.05
12,493.0	88.85	346.79	9,844.6	3,250.4	-1,045.0	3,414.3	342.18
12,588.0	89.20	347.18	9,846.2	3,342.9	-1,066.4	3,508.9	342.31
12,684.0	89.39	345.68	9,847.4	3,436.3	-1,089.0	3,604.7	342.42
12,778.0	89.55	347.72	9,848.3	3,527.7	-1,110.6	3,698.4	342.53
12,872.0	88.61	346.92	9,849.8	3,619.4	-1,131.2	3,792.1	342.64
12,966.0	88.97	348.45	9,851.7	3,711.2	-1,151.3	3,885.7	342.77
13,061.0	89.39	347.20	9,853.1	3,804.1	-1,171.3	3,980.3	342.89
13,155.0	87.88	347.52	9,855.3	3,895.8	-1,191.8	4,074.0	342.99
13,250.0	87.99	346.95	9,858.8	3,988.4	-1,212.8	4,168.7	343.09
13,345.0	88.07	347.37	9,862.0	4,080.9	-1,233.9	4,263.4	343.18
13,440.0	89.58	347.56	9,864.0	4,173.6	-1,254.5	4,358.1	343.27
13,535.0	89.67	349.51	9,864.6	4,266.7	-1,273.4	4,452.7	343.38
13,631.0	90.01	350.18	9,864.9	4,361.2	-1,290.3	4,548.1	343.52
13,725.0	90.23	349.44	9,864.7	4,453.8	-1,307.0	4,641.6	343.65
13,820.0	88.40	347.26	9,865.8	4,546.8	-1,326.2	4,736.2	343.74
13,914.0	88.78	345.64	9,868.1	4,638.1	-1,348.2	4,830.1	343.79
14,008.0	90.53	345.51	9,868.7	4,729.2	-1,371.6	4,924.0	343.83
14,103.0	91.36	346.98	9,867.1	4,821.4	-1,394.2	5,019.0	343.87
14,199.0	91.30	346.87	9,864.9	4,914.9	-1,415.9	5,114.8	343.93
14,294.0	91.04	346.93	9,863.0	5,007.4	-1,437.4	5,209.6	343.98
14,388.0	90.17	347.51	9,862.0	5,099.1	-1,458.2	5,303.5	344.04
14,482.0	88.81	348.89	9,862.8	5,191.1	-1,477.4	5,397.2	344.11
14,577.0	87.41	350.05	9,865.9	5,284.4	-1,494.8	5,491.8	344.21
14,672.0	87.60	350.92	9,870.1	5,378.0	-1,510.5	5,586.1	344.31
14,768.0	87.38	348.67	9,874.3	5,472.4	-1,527.5	5,681.6	344.40
14,862.0	88.08	347.47	9,878.0	5,564.3	-1,546.9	5,775.3	344.46
14,958.0	87.97	347.14	9,881.3	5,657.9	-1,568.0	5,871.2	344.51
15,053.0	90.13	346.80	9,882.9	5,750.5	-1,589.4	5,966.1	344.55



QES Survey Certification Report



Company:	Diamondback Energy	Local Co-ordinate Reference:	Well UL Blk 6 DDU A 4006WA
Project:	Andrews County, Texas	TVD Reference:	RKB @ 2984.0usft (Cactus #170)
Site:	UL A-U181, Sec 40, Blk 6	MD Reference:	RKB @ 2984.0usft (Cactus #170)
Well:	UL Blk 6 DDU A 4006WA	North Reference:	Grid
Wellbore:	Wellbore #1	Survey Calculation Method:	Minimum Curvature
Design:	Wellbore #1	Database:	EDM 5000.1 Single User Db

Survey								
MD (usft)	Inc (°)	Azi (azimuth) (°)	TVD (usft)	N/S (usft)	E/W (usft)	Closure Distance (usft)	Closure Azimuth (°)	
15,148.0	90.47	346.80	9,882.4	5,842.9	-1,611.1	6,061.0	344.58	
15,243.0	89.75	346.00	9,882.2	5,935.3	-1,633.4	6,155.9	344.61	
15,339.0	90.68	346.73	9,881.8	6,028.6	-1,656.0	6,251.9	344.64	
15,434.0	91.23	347.91	9,880.3	6,121.2	-1,676.9	6,346.8	344.68	
15,529.0	89.77	347.27	9,879.4	6,214.0	-1,697.3	6,441.6	344.72	
15,558.0	89.79	347.35	9,879.5	6,242.3	-1,703.7	6,470.6	344.73	
15,653.0	87.42	346.88	9,881.9	6,334.9	-1,724.8	6,565.5	344.77	
15,747.0	87.98	346.56	9,885.6	6,426.3	-1,746.4	6,659.4	344.80	
15,843.0	89.15	345.91	9,888.0	6,519.5	-1,769.2	6,755.3	344.82	
15,937.0	88.74	347.49	9,889.8	6,611.0	-1,790.9	6,849.2	344.84	
16,032.0	87.58	347.89	9,892.8	6,703.7	-1,811.1	6,944.1	344.88	
16,127.0	87.51	347.94	9,896.9	6,796.5	-1,831.0	7,038.8	344.92	
16,222.0	88.24	346.10	9,900.4	6,889.0	-1,852.3	7,133.7	344.95	
16,316.0	89.17	345.88	9,902.5	6,980.2	-1,875.1	7,227.7	344.96	
16,411.0	90.54	345.17	9,902.8	7,072.2	-1,898.8	7,322.7	344.97	
16,506.0	90.23	347.40	9,902.1	7,164.5	-1,921.3	7,417.6	344.99	
16,601.0	89.49	348.34	9,902.4	7,257.4	-1,941.3	7,512.5	345.02	
16,697.0	88.12	349.06	9,904.4	7,351.5	-1,960.1	7,608.3	345.07	
16,792.0	88.82	349.48	9,906.9	7,444.8	-1,977.8	7,703.0	345.12	
16,886.0	89.55	348.62	9,908.2	7,537.1	-1,995.6	7,796.8	345.17	
16,981.0	90.12	347.14	9,908.5	7,629.9	-2,015.6	7,891.7	345.20	
17,075.0	88.68	347.15	9,909.5	7,721.6	-2,036.5	7,985.6	345.23	
17,170.0	89.93	346.97	9,910.6	7,814.2	-2,057.8	8,080.6	345.25	
17,265.0	88.78	346.47	9,911.7	7,906.6	-2,079.6	8,175.5	345.26	
17,359.0	89.99	346.40	9,912.7	7,998.0	-2,101.6	8,269.5	345.28	
17,453.0	88.58	347.67	9,913.9	8,089.6	-2,122.7	8,363.4	345.30	
17,548.0	89.65	348.62	9,915.4	8,182.5	-2,142.2	8,458.3	345.33	
17,643.0	88.25	347.15	9,917.1	8,275.4	-2,162.2	8,553.2	345.36	
17,738.0	88.84	347.58	9,919.5	8,368.1	-2,182.9	8,648.1	345.38	
17,833.0	89.81	347.53	9,920.6	8,460.8	-2,203.4	8,743.0	345.40	
17,928.0	89.03	348.07	9,921.6	8,553.7	-2,223.5	8,837.9	345.43	
18,023.0	90.16	348.18	9,922.3	8,646.6	-2,243.0	8,932.8	345.46	
18,118.0	89.24	347.44	9,922.8	8,739.5	-2,263.1	9,027.7	345.48	
18,214.0	88.43	348.14	9,924.7	8,833.3	-2,283.4	9,123.6	345.51	
18,309.0	89.08	348.00	9,926.8	8,926.2	-2,303.0	9,218.5	345.53	
18,404.0	90.59	348.90	9,927.1	9,019.3	-2,322.0	9,313.4	345.56	
18,499.0	90.03	349.17	9,926.5	9,112.6	-2,340.1	9,408.2	345.60	
18,593.0	88.50	346.84	9,927.7	9,204.5	-2,359.6	9,502.1	345.62	
18,688.0	89.77	347.61	9,929.2	9,297.1	-2,380.6	9,597.1	345.64	
18,783.0	91.87	348.63	9,927.8	9,390.1	-2,400.2	9,692.0	345.66	
18,878.0	90.69	347.88	9,925.7	9,483.1	-2,419.5	9,786.9	345.69	
18,973.0	89.43	346.38	9,925.6	9,575.7	-2,440.7	9,881.8	345.70	
19,068.0	90.82	346.76	9,925.4	9,668.1	-2,462.7	9,976.8	345.71	
19,163.0	89.90	344.87	9,924.8	9,760.2	-2,486.0	10,071.8	345.71	



QES Survey Certification Report



Company:	Diamondback Energy	Local Co-ordinate Reference:	Well UL Blk 6 DDU A 4006WA
Project:	Andrews County, Texas	TVD Reference:	RKB @ 2984.0usft (Cactus #170)
Site:	UL A-U181, Sec 40, Blk 6	MD Reference:	RKB @ 2984.0usft (Cactus #170)
Well:	UL Blk 6 DDU A 4006WA	North Reference:	Grid
Wellbore:	Wellbore #1	Survey Calculation Method:	Minimum Curvature
Design:	Wellbore #1	Database:	EDM 5000.1 Single User Db

Survey								
MD (usft)	Inc (°)	Azi (azimuth) (°)	TVD (usft)	N/S (usft)	E/W (usft)	Closure Distance (usft)	Closure Azimuth (°)	
19,258.0	88.40	346.08	9,926.2	9,852.1	-2,509.9	10,166.8	345.71	
19,353.0	89.50	347.20	9,927.9	9,944.5	-2,531.8	10,261.8	345.72	
19,448.0	91.70	347.81	9,927.0	10,037.3	-2,552.3	10,356.7	345.73	
19,543.0	91.09	347.65	9,924.6	10,130.1	-2,572.5	10,451.6	345.75	
19,638.0	89.77	347.04	9,923.9	10,222.8	-2,593.3	10,546.6	345.77	
19,732.0	88.04	346.65	9,925.7	10,314.3	-2,614.7	10,640.5	345.77	
19,827.0	88.71	346.59	9,928.4	10,406.6	-2,636.7	10,735.5	345.78	
19,921.0	90.25	345.93	9,929.3	10,497.9	-2,659.0	10,829.5	345.79	
20,015.0	89.96	346.56	9,929.1	10,589.3	-2,681.4	10,923.5	345.79	
20,109.0	88.60	347.82	9,930.3	10,680.9	-2,702.2	11,017.4	345.80	
20,204.0	90.24	348.24	9,931.2	10,773.8	-2,721.9	11,112.3	345.82	
20,299.0	90.26	348.41	9,930.8	10,866.9	-2,741.1	11,207.3	345.84	
20,394.0	88.71	347.41	9,931.7	10,959.7	-2,761.0	11,302.2	345.86	
20,488.0	90.02	348.08	9,932.7	11,051.6	-2,781.0	11,396.1	345.88	
20,583.0	89.50	347.31	9,933.1	11,144.4	-2,801.2	11,491.1	345.89	
20,678.0	91.15	348.66	9,932.6	11,237.3	-2,821.0	11,586.0	345.91	
20,773.0	89.28	348.95	9,932.2	11,330.5	-2,839.5	11,680.9	345.93	
20,868.0	90.62	349.05	9,932.3	11,423.8	-2,857.6	11,775.7	345.96	
20,963.0	89.07	347.14	9,932.6	11,516.7	-2,877.2	11,870.7	345.97	
21,057.0	89.73	347.70	9,933.5	11,608.5	-2,897.7	11,964.6	345.98	
21,152.0	89.81	346.50	9,933.9	11,701.1	-2,918.9	12,059.6	345.99	
21,247.0	88.71	345.79	9,935.2	11,793.3	-2,941.6	12,154.6	345.99	
21,342.0	89.40	345.35	9,936.7	11,885.3	-2,965.3	12,249.6	345.99	
21,437.0	90.92	346.01	9,936.5	11,977.3	-2,988.8	12,344.6	345.99	
21,533.0	89.53	347.19	9,936.1	12,070.7	-3,011.0	12,440.6	345.99	
21,628.0	90.99	347.59	9,935.7	12,163.4	-3,031.8	12,535.5	346.00	
21,723.0	90.36	347.91	9,934.5	12,256.2	-3,051.9	12,630.5	346.02	
21,818.0	89.58	347.77	9,934.6	12,349.1	-3,071.9	12,725.4	346.03	
21,913.0	90.84	348.31	9,934.2	12,442.0	-3,091.6	12,820.4	346.05	
22,008.0	90.84	348.33	9,932.8	12,535.1	-3,110.8	12,915.3	346.06	
22,103.0	89.43	348.94	9,932.6	12,628.2	-3,129.6	13,010.2	346.08	
22,198.0	88.24	347.88	9,934.5	12,721.2	-3,148.6	13,105.1	346.10	
22,293.0	89.32	347.81	9,936.6	12,814.1	-3,168.6	13,200.0	346.11	
22,387.0	88.42	347.68	9,938.4	12,905.9	-3,188.6	13,294.0	346.12	
22,482.0	90.08	348.38	9,939.7	12,998.8	-3,208.3	13,388.9	346.14	
22,577.0	88.67	348.37	9,940.7	13,091.9	-3,227.4	13,483.8	346.15	
22,673.0	89.60	348.86	9,942.2	13,186.0	-3,246.4	13,579.7	346.17	
22,768.0	90.02	348.61	9,942.5	13,279.2	-3,264.9	13,674.6	346.19	
22,863.0	91.03	348.77	9,941.6	13,372.3	-3,283.6	13,769.5	346.20	
22,958.0	90.26	348.11	9,940.5	13,465.4	-3,302.6	13,864.5	346.22	
23,053.0	91.20	348.21	9,939.3	13,558.3	-3,322.1	13,959.4	346.23	
23,148.0	92.88	348.49	9,935.9	13,651.3	-3,341.3	14,054.3	346.25	
23,243.0	94.14	348.61	9,930.1	13,744.2	-3,360.1	14,149.0	346.26	
23,300.0	95.21	348.86	9,925.5	13,800.0	-3,371.2	14,205.8	346.27	



QES Survey Certification Report

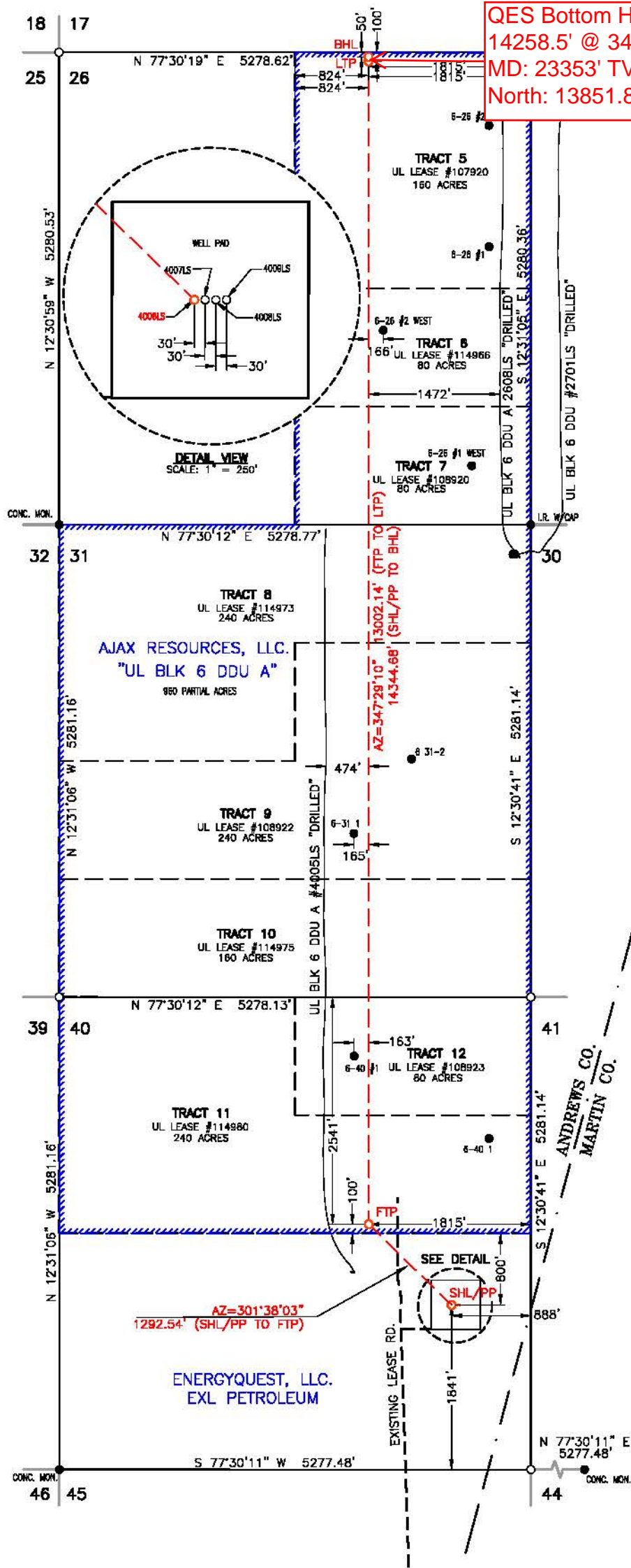


Company:	Diamondback Energy	Local Co-ordinate Reference:	Well UL Blk 6 DDU A 4006WA
Project:	Andrews County, Texas	TVD Reference:	RKB @ 2984.0usft (Cactus #170)
Site:	UL A-U181, Sec 40, Blk 6	MD Reference:	RKB @ 2984.0usft (Cactus #170)
Well:	UL Blk 6 DDU A 4006WA	North Reference:	Grid
Wellbore:	Wellbore #1	Survey Calculation Method:	Minimum Curvature
Design:	Wellbore #1	Database:	EDM 5000.1 Single User Db

Survey								
MD (usft)	Inc (°)	Azi (azimuth) (°)	TVD (usft)	N/S (usft)	E/W (usft)	Closure Distance (usft)	Closure Azimuth (°)	
23,353.0	95.21	348.86	9,920.7	13,851.8	-3,381.4	14,258.5	346.28	
TD @ 23353.0' MD / 9920.7' TVD								

Design Annotations					
Measured Depth (usft)	Vertical Depth (usft)	Local Coordinates		Comment	
		+N/-S (usft)	+E/-W (usft)		
1,813.0	1,812.9	7.2	-1.1	Tie In @ 1813.0'MD / 1812.9' TVD	
23,353.0	9,920.7	13,851.8	-3,381.4	TD @ 23353.0' MD / 9920.7' TVD	

Checked By: _____	Approved By: _____	Date: _____
-------------------	--------------------	-------------



QES Bottom Hole Location:
14258.5' @ 346.28° From SHL
MD: 23353' TVD: 9920.7'
North: 13851.8' West: 3381.4'



SCALE: 1" = 1500'
0' 750' 1500'

SPECIAL NOTES:

TRACT 5 160 ACRES PARTIAL LEASE 960 ACRES
TRACT 6 80 ACRES TOTAL LEASE 2160 ACRES
TRACT 7 80 ACRES
TRACT 8 240 ACRES
TRACT 9 240 ACRES
TRACT 10 160 ACRES
TRACT 11 240 ACRES
TRACT 12 80 ACRES

Original Document Size: 11"x17"
All Coordinates are in NAD 27
TX-NC Zone unless otherwise noted.

Surface Hole Location/

Penetration Point:

1841' FSL & 888' FEL (SEC. 40)

SHL Ground Elevation: 2950'

NAD 27 TX-NC ZONE:

X = 546612.47 Y = 320452.96
LAT.: N 32°27'28.33" LONG.: W 102°12'48.58"
LAT.: N 32.4578708 LONG.: W 102.2134944

NAD 83 TX-NC ZONE:

X = 823205.16 Y = 6869803.29
LAT.: N 32°27'28.71" LONG.: W 102°12'50.14"
LAT.: N 32.4579752 LONG.: W 102.2139282

First Take Point Location:

2541' FNL & 1815' FEL (SEC. 40)

NAD 27 TX-NC ZONE:

X = 545511.99 Y = 321130.89
LAT.: N 32°27'34.55" LONG.: W 102°13'01.77"
LAT.: N 32.4595967 LONG.: W 102.2171572

NAD 83 TX-NC ZONE:

X = 822098.23 Y = 6870470.69
LAT.: N 32°27'34.92" LONG.: W 102°13'03.33"
LAT.: N 32.4597010 LONG.: W 102.2175913

Last Take Point:

100' FNL & 1815' FEL (SEC. 26)

NAD 27 TX-NC ZONE:

X = 542694.72 Y = 333824.14
LAT.: N 32°29'38.78" LONG.: W 102°13'41.28"
LAT.: N 32.4941053 LONG.: W 102.2281333

NAD 83 TX-NC ZONE:

X = 819159.81 Y = 6883136.38
LAT.: N 32°29'39.15" LONG.: W 102°13'42.85"
LAT.: N 32.4942079 LONG.: W 102.2285693

Bottom Hole Location:

50' FNL & 1815' FEL (SEC. 26)

NAD 27 TX-NC ZONE:

X = 542683.88 Y = 333872.96
LAT.: N 32°29'39.26" LONG.: W 102°13'41.43"
LAT.: N 32.4942380 LONG.: W 102.2281756

NAD 83 TX-NC ZONE:

X = 819148.51 Y = 6883185.09
LAT.: N 32°29'39.63" LONG.: W 102°13'43.00"
LAT.: N 32.4943406 LONG.: W 102.2286115

LEGEND

- Section Line
- Black Line
- Abstract Line
- Tract Line
- Lease Road
- County Road
- Unit/Lease Boundary
- Found Monument
- Set 1/2" Rebar w/cap
- Calculated Corner

Scale: 1"=1500' Surveyed: 12/07/17

COGO: 762-113024

Revision: 3;(AG) 12/19/17

Drawn By: AG; 12/12/17

ORIGINAL DOC. SIZE: 11"x17"

CERTIFICATION:

This well location shown on this permit plat was surveyed on the ground under my direct supervision. This plat is for Texas Railroad Commission permit purpose only and should not be considered a boundary survey.

William J. Keating
Texas Reg. No. 5041



TOPOGRAPHIC
LOYALTY INNOVATION LEGACY
2803 NORTH BIG SPRING • MIDLAND, TEXAS 79705
TELEPHONE: (432) 682-1663 OR (800) 767-1663 • FAX (432) 682-1743
WWW.TOPOGRAPHIC.COM
Texas FIRM Registration NO. 10042500
FILE NAME: LO_UL_BLK6_DDU_A_4006LS_REV3

AJAX RESOURCES, LLC.

LEASE NAME & WELL NO.:

UL BLK 6 DDU A #4006LS

TOPOGRAPHY & VEGETATION:

NATURAL MESQUITE PASTURE

NEAREST TOWN IN COUNTY:

±21.63 MILES NORTHEAST OF ANDREWS, TEXAS

LOCATION DESCRIPTION:

SHL/PP/FTP: SECTION 40, BLOCK 6, UNIVERSITY LANDS SURVEY

LTP/BHL: SECTION 26, BLOCK 6, UNIVERSITY LANDS SURVEY

ANDREWS COUNTY, TEXAS

QES Directional Drilling, Inc.

11390 FM 830
Willis, TX 77318
Phone: (936) 856-4332
Fax: (936) 856-8678



April 17, 2019

Railroad Commission of Texas
Oil and Gas Division
1701 North Congress Avenue
Austin, Texas 78711

I Christopher Hughes, certify that I am employed by QES Directional Drilling, Inc. That I did on the day(s) of 3/26/2019 through 4/14/2019, conduct or supervise the taking of an MWD Survey from a depth of 1813' to a depth of 23353'; that the data is true, correct, complete, and within the limitations of the tool as set forth by Quintana Energy Services (QES).

I certify that I am authorized and qualified to make this report; that this survey was conducted at the request of Diamondback Energy, for the UL BLK 6 DDU A 4006WH, API No. 42-003-47694 in Andrews County, Texas. I certify that I have reviewed this report and find that it conforms to the principles and procedures as set forth by QES Directional Drilling, Inc.

Sincerely,

Christopher Hughes
MWD Compliance Manager
QES Directional Drilling, Inc.



Diamondback Energy

Andrews County, Texas

UL A-U181, Sec 40, Blk 6

UL Blk 6 DDU A 4006WA

Wellbore #1

Design: Wellbore #1

QES Survey Certification Report

14 April, 2019



QES Directional Drilling, Inc.

11390 FM 830
Willis, TX 77318
Phone: (936) 856-4332
Fax: (936) 856-8678



4/17/2019

Railroad Commission of Texas
Oil and Gas Division
1701 North Congress Avenue
Austin, Texas 78711

Attention: Pam Johns

Re: Diamondback Energy
UL BLK 6 DDU A 4006WA
RRC Lease/ID No.
UL
Abstract No. U181
Andrews County, Texas
API No. 42-003-47694

Enclosed, please find the original and one (1) copy of the survey performed on the referenced well by QES Directional Drilling, Inc. (P5#684437). Other information required by your office is as follows:

Name of Surveyor	Drainhole Number	Surveyed Depths	Dates Performed	Type of Survey
Tel Williams	Original Hole	1813'-23353'	03/26/2019-04/14/2019	MWD

A certified plat on which the bottom hole location is oriented both to the surface location and to the lease lines (or unit lines in case of pooling) is attached to the survey report. If any other information is required, please contact the undersigned at the letterhead address and phone number.

Sincerely,

Christopher Hughes
MWD Compliance Manager
QES Directional Drilling, Inc.

Enclosures
Cc: Diamondback Energy



QES Survey Certification Report



Company:	Diamondback Energy	Local Co-ordinate Reference:	Well UL Blk 6 DDU A 4006WA
Project:	Andrews County, Texas	TVD Reference:	RKB @ 2984.0usft (Cactus #170)
Site:	UL A-U181, Sec 40, Blk 6	MD Reference:	RKB @ 2984.0usft (Cactus #170)
Well:	UL Blk 6 DDU A 4006WA	North Reference:	Grid
Wellbore:	Wellbore #1	Survey Calculation Method:	Minimum Curvature
Design:	Wellbore #1	Database:	EDM 5000.1 Single User Db

Project	Andrews County, Texas		
Map System:	US State Plane 1927 (Exact solution)	System Datum:	Mean Sea Level
Geo Datum:	NAD 1927 (NADCON CONUS)		
Map Zone:	Texas North Central 4202		

Site		ULA-U181, Sec 40, Blk 6			
Site Position:		Northing:	319,998.00 usft	Latitude:	32° 27' 23.464 N
From:	Map	Easting:	545,772.00 usft	Longitude:	102° 12' 58.141 W
Position Uncertainty:	0.0 usft	Slot Radius:	13-3/16 "	Grid Convergence:	-2.57 °

Well	UL Blk 6 DDU A 4006WA					
Well Position	+N/-S	0.0 usft	Northing:	319,984.00 usft	Latitude:	32° 27' 23.300 N
	+E/-W	0.0 usft	Easting:	545,714.00 usft	Longitude:	102° 12' 58.810 W
Position Uncertainty		0.0 usft	Wellhead Elevation:	usft	Ground Level:	2,961.0 usft

Wellbore	Wellbore #1				
Magnetics	Model Name	Sample Date	Declination (°)	Dip Angle (°)	Field Strength (nT)
	User Defined	3/30/2019	6.19	60.17	47,862.80000000

Design	Wellbore #1			
Audit Notes:				
Version:	1.0	Phase:	ACTUAL	Tie On Depth: 0.0
Vertical Section:	Depth From (TVD) (usft)	+N/-S (usft)	+E/-W (usft)	Direction (°)
	0.0	0.0	0.0	347.49

Survey Program	Date	4/14/2019			
From (usft)	To (usft)	Survey (Wellbore)	Tool Name	Description	
129.0	1,813.0	Spudder Surveys (Wellbore #1)	MWD Default	OWSG MWD - Standard	
1,898.0	23,353.0	Superior FDIR - Full Report (Wellbore #1)	MWD+IFR1+SAG+MS	OWSG MWD + IFR1 + Sag + Multi-Station Correction	

Survey								
MD (usft)	Inc (°)	Azi (azimuth) (°)	TVD (usft)	N/S (usft)	E/W (usft)	Closure Distance (usft)		Closure Azimuth (°)
1,813.0	0.25	131.74	1,812.9	7.2	-1.1	7.2	351.26	
Tie In @ 1813.0'MD / 1812.9' TVD								
1,898.0	0.51	191.83	1,897.9	6.7	-1.0	6.7	351.13	
1,993.0	0.40	278.07	1,992.9	6.3	-1.5	6.5	346.99	
2,089.0	1.12	316.94	2,088.9	7.0	-2.4	7.4	340.95	
2,183.0	2.16	321.67	2,182.9	9.1	-4.2	10.0	335.45	
2,279.0	3.48	320.80	2,278.7	12.8	-7.1	14.6	330.87	
2,374.0	4.40	319.37	2,373.5	17.8	-11.3	21.1	327.52	
2,469.0	5.49	317.65	2,468.2	23.9	-16.7	29.2	324.97	
2,564.0	6.73	312.30	2,562.6	31.0	-23.9	39.2	322.34	
2,659.0	7.87	310.52	2,656.9	39.0	-33.0	51.1	319.75	



QES Survey Certification Report



Company:	Diamondback Energy	Local Co-ordinate Reference:	Well UL Blk 6 DDU A 4006WA
Project:	Andrews County, Texas	TVD Reference:	RKB @ 2984.0usft (Cactus #170)
Site:	UL A-U181, Sec 40, Blk 6	MD Reference:	RKB @ 2984.0usft (Cactus #170)
Well:	UL Blk 6 DDU A 4006WA	North Reference:	Grid
Wellbore:	Wellbore #1	Survey Calculation Method:	Minimum Curvature
Design:	Wellbore #1	Database:	EDM 5000.1 Single User Db

Survey								
MD (usft)	Inc (°)	Azi (azimuth) (°)	TVD (usft)	N/S (usft)	E/W (usft)	Closure Distance (usft)	Closure Azimuth (°)	
2,754.0	7.96	310.62	2,750.9	47.5	-42.9	64.0	317.88	
2,849.0	7.91	311.82	2,845.0	56.1	-52.8	77.0	316.75	
2,944.0	7.75	310.97	2,939.2	64.7	-62.5	89.9	315.98	
3,039.0	7.73	310.47	3,033.3	73.0	-72.2	102.7	315.33	
3,134.0	7.57	309.93	3,127.4	81.2	-81.9	115.3	314.77	
3,229.0	7.22	311.26	3,221.7	89.1	-91.1	127.5	314.37	
3,325.0	8.12	312.43	3,316.8	97.7	-100.7	140.3	314.14	
3,420.0	8.63	312.05	3,410.8	107.0	-110.9	154.1	313.97	
3,515.0	8.45	311.45	3,504.7	116.4	-121.4	168.2	313.78	
3,610.0	8.35	311.09	3,598.7	125.5	-131.9	182.1	313.59	
3,705.0	8.14	311.05	3,692.7	134.5	-142.1	195.7	313.42	
3,800.0	8.21	310.94	3,786.8	143.4	-152.3	209.2	313.26	
3,895.0	8.09	310.74	3,880.8	152.2	-162.5	222.6	313.11	
3,989.0	8.35	313.09	3,973.8	161.1	-172.5	236.1	313.05	
4,084.0	8.22	313.47	4,067.8	170.5	-182.5	249.8	313.06	
4,179.0	7.81	313.12	4,161.9	179.6	-192.1	263.0	313.07	
4,274.0	8.16	314.22	4,256.0	188.7	-201.7	276.2	313.10	
4,369.0	7.93	315.30	4,350.1	198.1	-211.1	289.5	313.18	
4,464.0	8.29	311.67	4,444.1	207.3	-220.8	302.9	313.19	
4,559.0	8.02	311.24	4,538.1	216.2	-230.9	316.4	313.11	
4,654.0	7.17	311.75	4,632.3	224.5	-240.4	328.9	313.05	
4,748.0	7.05	313.06	4,725.6	232.4	-248.9	340.5	313.03	
4,843.0	6.80	312.00	4,819.9	240.1	-257.4	352.0	313.01	
4,938.0	6.71	312.25	4,914.2	247.6	-265.7	363.2	312.99	
5,036.0	6.39	314.36	5,011.6	255.3	-273.8	374.4	312.99	
5,131.0	6.31	313.99	5,106.0	262.6	-281.3	384.9	313.03	
5,226.0	6.37	314.01	5,200.4	269.9	-288.9	395.3	313.05	
5,321.0	6.14	313.28	5,294.9	277.0	-296.4	405.7	313.07	
5,416.0	5.97	313.37	5,389.3	283.9	-303.7	415.7	313.07	
5,511.0	6.92	313.65	5,483.7	291.3	-311.4	426.4	313.09	
5,606.0	6.67	314.60	5,578.1	299.1	-319.5	437.6	313.11	
5,700.0	6.39	313.21	5,671.5	306.5	-327.2	448.3	313.13	
5,795.0	6.32	311.92	5,765.9	313.6	-334.9	458.8	313.12	
5,890.0	6.16	312.40	5,860.3	320.5	-342.6	469.1	313.10	
5,985.0	6.16	312.42	5,954.8	327.4	-350.1	479.3	313.08	
6,081.0	6.08	310.96	6,050.2	334.2	-357.7	489.6	313.05	
6,175.0	5.50	309.88	6,143.7	340.4	-365.0	499.0	313.00	
6,270.0	4.30	308.83	6,238.4	345.5	-371.2	507.1	312.95	
6,365.0	3.53	311.67	6,333.2	349.7	-376.2	513.6	312.91	
6,460.0	2.32	316.14	6,428.0	353.0	-379.7	518.5	312.92	
6,515.0	2.21	315.97	6,483.0	354.6	-381.2	520.6	312.93	
6,589.0	2.32	314.82	6,556.9	356.7	-383.3	523.6	312.94	
6,684.0	1.72	314.34	6,651.9	359.0	-385.6	526.9	312.95	
6,780.0	1.35	312.44	6,747.8	360.8	-387.5	529.5	312.96	



QES Survey Certification Report



Company:	Diamondback Energy	Local Co-ordinate Reference:	Well UL Blk 6 DDU A 4006WA
Project:	Andrews County, Texas	TVD Reference:	RKB @ 2984.0usft (Cactus #170)
Site:	UL A-U181, Sec 40, Blk 6	MD Reference:	RKB @ 2984.0usft (Cactus #170)
Well:	UL Blk 6 DDU A 4006WA	North Reference:	Grid
Wellbore:	Wellbore #1	Survey Calculation Method:	Minimum Curvature
Design:	Wellbore #1	Database:	EDM 5000.1 Single User Db

Survey								
MD (usft)	Inc (°)	Azi (azimuth) (°)	TVD (usft)	N/S (usft)	E/W (usft)	Closure Distance (usft)	Closure Azimuth (°)	
6,875.0	1.14	319.21	6,842.8	362.3	-389.0	531.5	312.97	
6,970.0	0.67	318.03	6,937.8	363.4	-389.9	533.0	312.98	
7,064.0	0.60	330.84	7,031.8	364.2	-390.5	534.0	313.00	
7,158.0	0.51	329.29	7,125.8	365.0	-391.0	534.9	313.03	
7,252.0	0.48	311.69	7,219.8	365.6	-391.5	535.7	313.04	
7,348.0	0.22	312.74	7,315.8	366.0	-391.9	536.3	313.04	
7,443.0	0.19	311.79	7,410.8	366.3	-392.2	536.6	313.04	
7,538.0	0.13	11.70	7,505.8	366.5	-392.3	536.8	313.05	
7,633.0	0.18	354.90	7,600.8	366.7	-392.3	537.0	313.07	
7,728.0	0.12	318.18	7,695.8	367.0	-392.4	537.2	313.08	
7,823.0	0.23	27.00	7,790.8	367.2	-392.3	537.4	313.10	
7,918.0	1.00	48.61	7,885.8	367.9	-391.6	537.3	313.21	
8,013.0	0.94	47.14	7,980.8	369.0	-390.4	537.2	313.38	
8,108.0	0.95	53.05	8,075.8	370.0	-389.2	537.0	313.55	
8,203.0	1.15	54.61	8,170.7	371.0	-387.8	536.7	313.73	
8,298.0	1.00	70.02	8,265.7	371.9	-386.3	536.2	313.91	
8,393.0	0.82	93.18	8,360.7	372.1	-384.8	535.3	314.04	
8,488.0	0.92	191.48	8,455.7	371.3	-384.3	534.4	314.02	
8,582.0	0.98	187.85	8,549.7	369.8	-384.6	533.5	313.88	
8,677.0	0.97	252.73	8,644.7	368.7	-385.4	533.4	313.73	
8,772.0	0.96	236.83	8,739.7	368.1	-386.9	534.0	313.57	
8,867.0	0.89	232.18	8,834.7	367.2	-388.1	534.3	313.41	
8,962.0	0.83	220.47	8,929.7	366.2	-389.1	534.4	313.26	
9,057.0	0.90	220.10	9,024.6	365.1	-390.1	534.3	313.11	
9,077.0	0.98	216.84	9,044.6	364.9	-390.3	534.3	313.07	
9,172.0	5.29	329.00	9,139.5	368.0	-393.0	538.4	313.11	
9,219.0	11.51	340.06	9,186.0	374.2	-395.7	544.7	313.40	
9,267.0	17.69	345.06	9,232.4	385.8	-399.3	555.2	314.02	
9,362.0	20.16	342.30	9,322.3	415.3	-408.0	582.2	315.51	
9,457.0	23.60	341.26	9,410.4	449.0	-419.0	614.1	316.97	
9,552.0	29.27	344.11	9,495.5	489.3	-431.5	652.4	318.59	
9,648.0	40.76	350.88	9,574.0	543.0	-443.0	700.8	320.80	
9,742.0	49.41	348.73	9,640.3	608.5	-454.8	759.7	323.22	
9,837.0	57.16	346.56	9,697.0	682.8	-471.2	829.6	325.39	
9,932.0	64.59	346.05	9,743.2	763.4	-490.8	907.5	327.26	
10,027.0	71.20	345.61	9,779.0	848.6	-512.4	991.3	328.88	
10,122.0	78.57	346.34	9,803.7	937.6	-534.6	1,079.3	330.31	
10,217.0	83.51	347.86	9,818.5	1,029.0	-555.5	1,169.4	331.64	
10,312.0	87.52	348.18	9,825.9	1,121.6	-575.2	1,260.5	332.85	
10,406.0	87.90	347.57	9,829.7	1,213.5	-594.9	1,351.4	333.88	
10,502.0	87.11	346.80	9,833.9	1,307.0	-616.2	1,444.9	334.76	
10,597.0	87.27	346.76	9,838.5	1,399.4	-637.9	1,537.9	335.50	
10,691.0	89.12	346.91	9,841.5	1,490.8	-659.2	1,630.1	336.14	
10,786.0	88.74	345.29	9,843.3	1,583.0	-682.1	1,723.7	336.69	
10,881.0	89.41	346.96	9,844.8	1,675.2	-704.8	1,817.5	337.18	



QES Survey Certification Report



Company:	Diamondback Energy	Local Co-ordinate Reference:	Well UL Blk 6 DDU A 4006WA
Project:	Andrews County, Texas	TVD Reference:	RKB @ 2984.0usft (Cactus #170)
Site:	UL A-U181, Sec 40, Blk 6	MD Reference:	RKB @ 2984.0usft (Cactus #170)
Well:	UL Blk 6 DDU A 4006WA	North Reference:	Grid
Wellbore:	Wellbore #1	Survey Calculation Method:	Minimum Curvature
Design:	Wellbore #1	Database:	EDM 5000.1 Single User Db

Survey							
MD (usft)	Inc (°)	Azi (azimuth) (°)	TVD (usft)	N/S (usft)	E/W (usft)	Closure Distance (usft)	Closure Azimuth (°)
10,975.0	90.35	349.18	9,845.0	1,767.2	-724.3	1,909.9	337.71
11,070.0	90.37	349.13	9,844.4	1,860.5	-742.1	2,003.1	338.25
11,165.0	91.07	350.53	9,843.2	1,954.0	-758.9	2,096.2	338.77
11,261.0	88.43	348.96	9,843.6	2,048.5	-776.0	2,190.5	339.25
11,355.0	88.11	348.25	9,846.5	2,140.6	-794.6	2,283.3	339.64
11,449.0	88.43	347.67	9,849.3	2,232.5	-814.2	2,376.3	339.96
11,544.0	88.85	346.44	9,851.6	2,325.0	-835.4	2,470.6	340.24
11,638.0	90.05	346.08	9,852.5	2,416.3	-857.8	2,564.1	340.46
11,732.0	90.19	346.74	9,852.3	2,507.7	-879.9	2,657.6	340.67
11,828.0	91.21	348.32	9,851.1	2,601.4	-900.6	2,752.9	340.90
11,922.0	92.23	347.70	9,848.3	2,693.3	-920.1	2,846.1	341.14
12,017.0	90.77	347.41	9,845.8	2,786.0	-940.6	2,940.5	341.35
12,112.0	89.88	348.45	9,845.3	2,878.9	-960.4	3,034.9	341.55
12,207.0	90.30	347.77	9,845.1	2,971.9	-980.0	3,129.3	341.75
12,302.0	90.14	347.11	9,844.7	3,064.6	-1,000.7	3,223.9	341.92
12,397.0	90.60	346.18	9,844.1	3,157.1	-1,022.6	3,318.5	342.05
12,493.0	88.85	346.79	9,844.6	3,250.4	-1,045.0	3,414.3	342.18
12,588.0	89.20	347.18	9,846.2	3,342.9	-1,066.4	3,508.9	342.31
12,684.0	89.39	345.68	9,847.4	3,436.3	-1,089.0	3,604.7	342.42
12,778.0	89.55	347.72	9,848.3	3,527.7	-1,110.6	3,698.4	342.53
12,872.0	88.61	346.92	9,849.8	3,619.4	-1,131.2	3,792.1	342.64
12,966.0	88.97	348.45	9,851.7	3,711.2	-1,151.3	3,885.7	342.77
13,061.0	89.39	347.20	9,853.1	3,804.1	-1,171.3	3,980.3	342.89
13,155.0	87.88	347.52	9,855.3	3,895.8	-1,191.8	4,074.0	342.99
13,250.0	87.99	346.95	9,858.8	3,988.4	-1,212.8	4,168.7	343.09
13,345.0	88.07	347.37	9,862.0	4,080.9	-1,233.9	4,263.4	343.18
13,440.0	89.58	347.56	9,864.0	4,173.6	-1,254.5	4,358.1	343.27
13,535.0	89.67	349.51	9,864.6	4,266.7	-1,273.4	4,452.7	343.38
13,631.0	90.01	350.18	9,864.9	4,361.2	-1,290.3	4,548.1	343.52
13,725.0	90.23	349.44	9,864.7	4,453.8	-1,307.0	4,641.6	343.65
13,820.0	88.40	347.26	9,865.8	4,546.8	-1,326.2	4,736.2	343.74
13,914.0	88.78	345.64	9,868.1	4,638.1	-1,348.2	4,830.1	343.79
14,008.0	90.53	345.51	9,868.7	4,729.2	-1,371.6	4,924.0	343.83
14,103.0	91.36	346.98	9,867.1	4,821.4	-1,394.2	5,019.0	343.87
14,199.0	91.30	346.87	9,864.9	4,914.9	-1,415.9	5,114.8	343.93
14,294.0	91.04	346.93	9,863.0	5,007.4	-1,437.4	5,209.6	343.98
14,388.0	90.17	347.51	9,862.0	5,099.1	-1,458.2	5,303.5	344.04
14,482.0	88.81	348.89	9,862.8	5,191.1	-1,477.4	5,397.2	344.11
14,577.0	87.41	350.05	9,865.9	5,284.4	-1,494.8	5,491.8	344.21
14,672.0	87.60	350.92	9,870.1	5,378.0	-1,510.5	5,586.1	344.31
14,768.0	87.38	348.67	9,874.3	5,472.4	-1,527.5	5,681.6	344.40
14,862.0	88.08	347.47	9,878.0	5,564.3	-1,546.9	5,775.3	344.46
14,958.0	87.97	347.14	9,881.3	5,657.9	-1,568.0	5,871.2	344.51
15,053.0	90.13	346.80	9,882.9	5,750.5	-1,589.4	5,966.1	344.55



QES Survey Certification Report



Company:	Diamondback Energy	Local Co-ordinate Reference:	Well UL Blk 6 DDU A 4006WA
Project:	Andrews County, Texas	TVD Reference:	RKB @ 2984.0usft (Cactus #170)
Site:	UL A-U181, Sec 40, Blk 6	MD Reference:	RKB @ 2984.0usft (Cactus #170)
Well:	UL Blk 6 DDU A 4006WA	North Reference:	Grid
Wellbore:	Wellbore #1	Survey Calculation Method:	Minimum Curvature
Design:	Wellbore #1	Database:	EDM 5000.1 Single User Db

Survey								
MD (usft)	Inc (°)	Azi (azimuth) (°)	TVD (usft)	N/S (usft)	E/W (usft)	Closure Distance (usft)	Closure Azimuth (°)	
15,148.0	90.47	346.80	9,882.4	5,842.9	-1,611.1	6,061.0	344.58	
15,243.0	89.75	346.00	9,882.2	5,935.3	-1,633.4	6,155.9	344.61	
15,339.0	90.68	346.73	9,881.8	6,028.6	-1,656.0	6,251.9	344.64	
15,434.0	91.23	347.91	9,880.3	6,121.2	-1,676.9	6,346.8	344.68	
15,529.0	89.77	347.27	9,879.4	6,214.0	-1,697.3	6,441.6	344.72	
15,558.0	89.79	347.35	9,879.5	6,242.3	-1,703.7	6,470.6	344.73	
15,653.0	87.42	346.88	9,881.9	6,334.9	-1,724.8	6,565.5	344.77	
15,747.0	87.98	346.56	9,885.6	6,426.3	-1,746.4	6,659.4	344.80	
15,843.0	89.15	345.91	9,888.0	6,519.5	-1,769.2	6,755.3	344.82	
15,937.0	88.74	347.49	9,889.8	6,611.0	-1,790.9	6,849.2	344.84	
16,032.0	87.58	347.89	9,892.8	6,703.7	-1,811.1	6,944.1	344.88	
16,127.0	87.51	347.94	9,896.9	6,796.5	-1,831.0	7,038.8	344.92	
16,222.0	88.24	346.10	9,900.4	6,889.0	-1,852.3	7,133.7	344.95	
16,316.0	89.17	345.88	9,902.5	6,980.2	-1,875.1	7,227.7	344.96	
16,411.0	90.54	345.17	9,902.8	7,072.2	-1,898.8	7,322.7	344.97	
16,506.0	90.23	347.40	9,902.1	7,164.5	-1,921.3	7,417.6	344.99	
16,601.0	89.49	348.34	9,902.4	7,257.4	-1,941.3	7,512.5	345.02	
16,697.0	88.12	349.06	9,904.4	7,351.5	-1,960.1	7,608.3	345.07	
16,792.0	88.82	349.48	9,906.9	7,444.8	-1,977.8	7,703.0	345.12	
16,886.0	89.55	348.62	9,908.2	7,537.1	-1,995.6	7,796.8	345.17	
16,981.0	90.12	347.14	9,908.5	7,629.9	-2,015.6	7,891.7	345.20	
17,075.0	88.68	347.15	9,909.5	7,721.6	-2,036.5	7,985.6	345.23	
17,170.0	89.93	346.97	9,910.6	7,814.2	-2,057.8	8,080.6	345.25	
17,265.0	88.78	346.47	9,911.7	7,906.6	-2,079.6	8,175.5	345.26	
17,359.0	89.99	346.40	9,912.7	7,998.0	-2,101.6	8,269.5	345.28	
17,453.0	88.58	347.67	9,913.9	8,089.6	-2,122.7	8,363.4	345.30	
17,548.0	89.65	348.62	9,915.4	8,182.5	-2,142.2	8,458.3	345.33	
17,643.0	88.25	347.15	9,917.1	8,275.4	-2,162.2	8,553.2	345.36	
17,738.0	88.84	347.58	9,919.5	8,368.1	-2,182.9	8,648.1	345.38	
17,833.0	89.81	347.53	9,920.6	8,460.8	-2,203.4	8,743.0	345.40	
17,928.0	89.03	348.07	9,921.6	8,553.7	-2,223.5	8,837.9	345.43	
18,023.0	90.16	348.18	9,922.3	8,646.6	-2,243.0	8,932.8	345.46	
18,118.0	89.24	347.44	9,922.8	8,739.5	-2,263.1	9,027.7	345.48	
18,214.0	88.43	348.14	9,924.7	8,833.3	-2,283.4	9,123.6	345.51	
18,309.0	89.08	348.00	9,926.8	8,926.2	-2,303.0	9,218.5	345.53	
18,404.0	90.59	348.90	9,927.1	9,019.3	-2,322.0	9,313.4	345.56	
18,499.0	90.03	349.17	9,926.5	9,112.6	-2,340.1	9,408.2	345.60	
18,593.0	88.50	346.84	9,927.7	9,204.5	-2,359.6	9,502.1	345.62	
18,688.0	89.77	347.61	9,929.2	9,297.1	-2,380.6	9,597.1	345.64	
18,783.0	91.87	348.63	9,927.8	9,390.1	-2,400.2	9,692.0	345.66	
18,878.0	90.69	347.88	9,925.7	9,483.1	-2,419.5	9,786.9	345.69	
18,973.0	89.43	346.38	9,925.6	9,575.7	-2,440.7	9,881.8	345.70	
19,068.0	90.82	346.76	9,925.4	9,668.1	-2,462.7	9,976.8	345.71	
19,163.0	89.90	344.87	9,924.8	9,760.2	-2,486.0	10,071.8	345.71	



QES Survey Certification Report



Company:	Diamondback Energy	Local Co-ordinate Reference:	Well UL Blk 6 DDU A 4006WA
Project:	Andrews County, Texas	TVD Reference:	RKB @ 2984.0usft (Cactus #170)
Site:	UL A-U181, Sec 40, Blk 6	MD Reference:	RKB @ 2984.0usft (Cactus #170)
Well:	UL Blk 6 DDU A 4006WA	North Reference:	Grid
Wellbore:	Wellbore #1	Survey Calculation Method:	Minimum Curvature
Design:	Wellbore #1	Database:	EDM 5000.1 Single User Db

Survey								
MD (usft)	Inc (°)	Azi (azimuth) (°)	TVD (usft)	N/S (usft)	E/W (usft)	Closure Distance (usft)	Closure Azimuth (°)	
19,258.0	88.40	346.08	9,926.2	9,852.1	-2,509.9	10,166.8	345.71	
19,353.0	89.50	347.20	9,927.9	9,944.5	-2,531.8	10,261.8	345.72	
19,448.0	91.70	347.81	9,927.0	10,037.3	-2,552.3	10,356.7	345.73	
19,543.0	91.09	347.65	9,924.6	10,130.1	-2,572.5	10,451.6	345.75	
19,638.0	89.77	347.04	9,923.9	10,222.8	-2,593.3	10,546.6	345.77	
19,732.0	88.04	346.65	9,925.7	10,314.3	-2,614.7	10,640.5	345.77	
19,827.0	88.71	346.59	9,928.4	10,406.6	-2,636.7	10,735.5	345.78	
19,921.0	90.25	345.93	9,929.3	10,497.9	-2,659.0	10,829.5	345.79	
20,015.0	89.96	346.56	9,929.1	10,589.3	-2,681.4	10,923.5	345.79	
20,109.0	88.60	347.82	9,930.3	10,680.9	-2,702.2	11,017.4	345.80	
20,204.0	90.24	348.24	9,931.2	10,773.8	-2,721.9	11,112.3	345.82	
20,299.0	90.26	348.41	9,930.8	10,866.9	-2,741.1	11,207.3	345.84	
20,394.0	88.71	347.41	9,931.7	10,959.7	-2,761.0	11,302.2	345.86	
20,488.0	90.02	348.08	9,932.7	11,051.6	-2,781.0	11,396.1	345.88	
20,583.0	89.50	347.31	9,933.1	11,144.4	-2,801.2	11,491.1	345.89	
20,678.0	91.15	348.66	9,932.6	11,237.3	-2,821.0	11,586.0	345.91	
20,773.0	89.28	348.95	9,932.2	11,330.5	-2,839.5	11,680.9	345.93	
20,868.0	90.62	349.05	9,932.3	11,423.8	-2,857.6	11,775.7	345.96	
20,963.0	89.07	347.14	9,932.6	11,516.7	-2,877.2	11,870.7	345.97	
21,057.0	89.73	347.70	9,933.5	11,608.5	-2,897.7	11,964.6	345.98	
21,152.0	89.81	346.50	9,933.9	11,701.1	-2,918.9	12,059.6	345.99	
21,247.0	88.71	345.79	9,935.2	11,793.3	-2,941.6	12,154.6	345.99	
21,342.0	89.40	345.35	9,936.7	11,885.3	-2,965.3	12,249.6	345.99	
21,437.0	90.92	346.01	9,936.5	11,977.3	-2,988.8	12,344.6	345.99	
21,533.0	89.53	347.19	9,936.1	12,070.7	-3,011.0	12,440.6	345.99	
21,628.0	90.99	347.59	9,935.7	12,163.4	-3,031.8	12,535.5	346.00	
21,723.0	90.36	347.91	9,934.5	12,256.2	-3,051.9	12,630.5	346.02	
21,818.0	89.58	347.77	9,934.6	12,349.1	-3,071.9	12,725.4	346.03	
21,913.0	90.84	348.31	9,934.2	12,442.0	-3,091.6	12,820.4	346.05	
22,008.0	90.84	348.33	9,932.8	12,535.1	-3,110.8	12,915.3	346.06	
22,103.0	89.43	348.94	9,932.6	12,628.2	-3,129.6	13,010.2	346.08	
22,198.0	88.24	347.88	9,934.5	12,721.2	-3,148.6	13,105.1	346.10	
22,293.0	89.32	347.81	9,936.6	12,814.1	-3,168.6	13,200.0	346.11	
22,387.0	88.42	347.68	9,938.4	12,905.9	-3,188.6	13,294.0	346.12	
22,482.0	90.08	348.38	9,939.7	12,998.8	-3,208.3	13,388.9	346.14	
22,577.0	88.67	348.37	9,940.7	13,091.9	-3,227.4	13,483.8	346.15	
22,673.0	89.60	348.86	9,942.2	13,186.0	-3,246.4	13,579.7	346.17	
22,768.0	90.02	348.61	9,942.5	13,279.2	-3,264.9	13,674.6	346.19	
22,863.0	91.03	348.77	9,941.6	13,372.3	-3,283.6	13,769.5	346.20	
22,958.0	90.26	348.11	9,940.5	13,465.4	-3,302.6	13,864.5	346.22	
23,053.0	91.20	348.21	9,939.3	13,558.3	-3,322.1	13,959.4	346.23	
23,148.0	92.88	348.49	9,935.9	13,651.3	-3,341.3	14,054.3	346.25	
23,243.0	94.14	348.61	9,930.1	13,744.2	-3,360.1	14,149.0	346.26	
23,300.0	95.21	348.86	9,925.5	13,800.0	-3,371.2	14,205.8	346.27	



QES Survey Certification Report

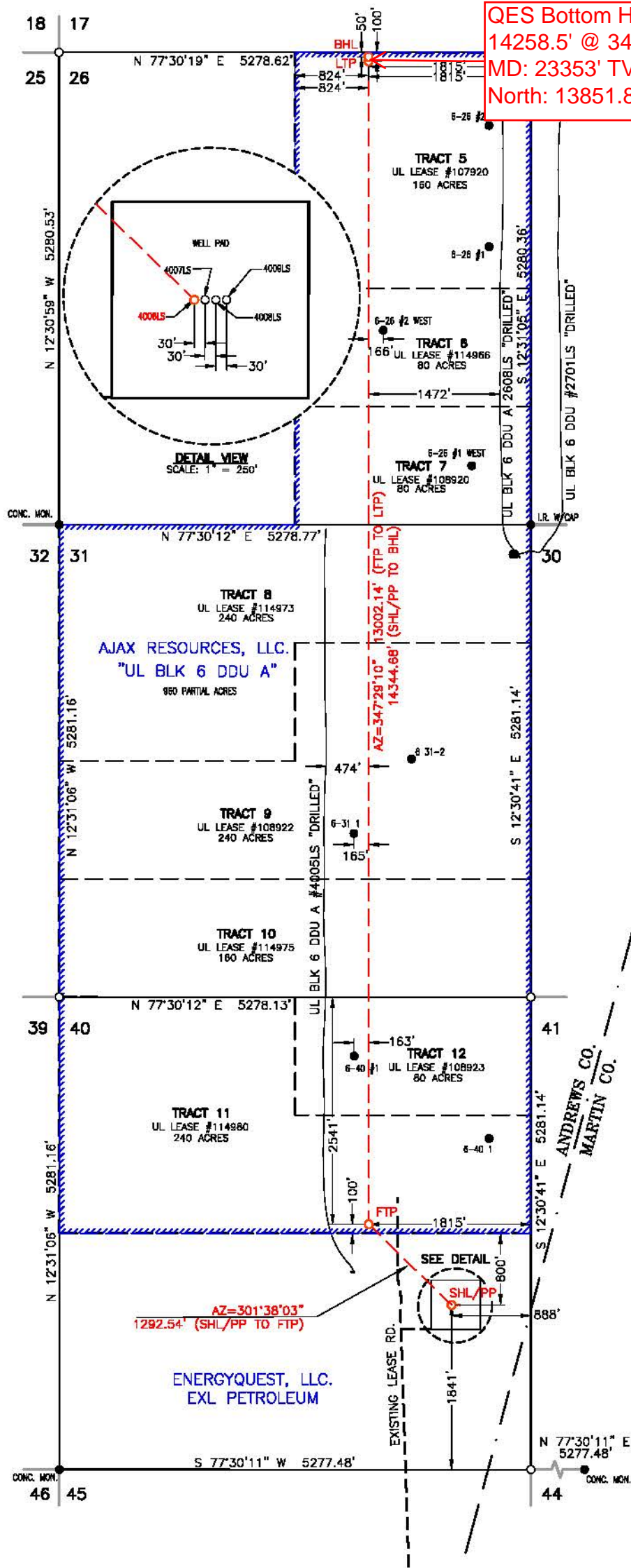


Company:	Diamondback Energy	Local Co-ordinate Reference:	Well UL Blk 6 DDU A 4006WA
Project:	Andrews County, Texas	TVD Reference:	RKB @ 2984.0usft (Cactus #170)
Site:	UL A-U181, Sec 40, Blk 6	MD Reference:	RKB @ 2984.0usft (Cactus #170)
Well:	UL Blk 6 DDU A 4006WA	North Reference:	Grid
Wellbore:	Wellbore #1	Survey Calculation Method:	Minimum Curvature
Design:	Wellbore #1	Database:	EDM 5000.1 Single User Db

Survey								
MD (usft)	Inc (°)	Azi (azimuth) (°)	TVD (usft)	N/S (usft)	E/W (usft)	Closure Distance (usft)	Closure Azimuth (°)	
23,353.0	95.21	348.86	9,920.7	13,851.8	-3,381.4	14,258.5	346.28	
TD @ 23353.0' MD / 9920.7' TVD								

Design Annotations					
Measured Depth (usft)	Vertical Depth (usft)	Local Coordinates		Comment	
		+N/-S (usft)	+E/-W (usft)		
1,813.0	1,812.9	7.2	-1.1	Tie In @ 1813.0'MD / 1812.9' TVD	
23,353.0	9,920.7	13,851.8	-3,381.4	TD @ 23353.0' MD / 9920.7' TVD	

Checked By: _____	Approved By: _____	Date: _____
-------------------	--------------------	-------------



QES Bottom Hole Location:
14258.5' @ 346.28° From SHL
MD: 23353' TVD: 9920.7'
North: 13851.8' West: 3381.4'



SCALE: 1" = 1500'
0' 750' 1500'

SPECIAL NOTES:

TRACT 5 160 ACRES PARTIAL LEASE 960 ACRES
TRACT 6 80 ACRES TOTAL LEASE 2160 ACRES
TRACT 7 80 ACRES
TRACT 8 240 ACRES
TRACT 9 240 ACRES
TRACT 10 160 ACRES
TRACT 11 240 ACRES
TRACT 12 80 ACRES

Original Document Size: 11"x17"
All Coordinates are in NAD 27
TX-NC Zone unless otherwise noted.

Surface Hole Location/

Penetration Point:

1841' FSL & 888' FEL (SEC. 40)

SHL Ground Elevation: 2950'

NAD 27 TX-NC ZONE:

X = 546612.47 Y = 320452.96
LAT.: N 32°27'28.33" LONG.: W 102°12'48.58"
LAT.: N 32.4578708 LONG.: W 102.2134944

NAD 83 TX-NC ZONE:

X = 823205.16 Y = 6869803.29
LAT.: N 32°27'28.71" LONG.: W 102°12'50.14"
LAT.: N 32.4579752 LONG.: W 102.2139282

First Take Point Location:

2541' FNL & 1815' FEL (SEC. 40)

NAD 27 TX-NC ZONE:

X = 545511.99 Y = 321130.89
LAT.: N 32°27'34.55" LONG.: W 102°13'01.77"
LAT.: N 32.4595967 LONG.: W 102.2171572

NAD 83 TX-NC ZONE:

X = 822098.23 Y = 6870470.69
LAT.: N 32°27'34.92" LONG.: W 102°13'03.33"
LAT.: N 32.4597010 LONG.: W 102.2175913

Last Take Point:

100' FNL & 1815' FEL (SEC. 26)

NAD 27 TX-NC ZONE:

X = 542694.72 Y = 333824.14
LAT.: N 32°29'38.78" LONG.: W 102°13'41.28"
LAT.: N 32.4941053 LONG.: W 102.2281333

NAD 83 TX-NC ZONE:

X = 819159.81 Y = 6883136.38
LAT.: N 32°29'39.15" LONG.: W 102°13'42.85"
LAT.: N 32.4942079 LONG.: W 102.2285693

Bottom Hole Location:

50' FNL & 1815' FEL (SEC. 26)

NAD 27 TX-NC ZONE:

X = 542683.88 Y = 333872.96
LAT.: N 32°29'39.26" LONG.: W 102°13'41.43"
LAT.: N 32.4942380 LONG.: W 102.2281756

NAD 83 TX-NC ZONE:

X = 819148.51 Y = 6883185.09
LAT.: N 32°29'39.63" LONG.: W 102°13'43.00"
LAT.: N 32.4943406 LONG.: W 102.2286115

LEGEND

- Section Line
- Black Line
- Abstract Line
- Tract Line
- Lease Road
- County Road
- Unit/Lease Boundary
- Found Monument
- Set 1/2" Rebar w/cap
- Calculated Corner

Scale: 1"=1500' Surveyed: 12/07/17

COGO: 762-113024

Revision: 3;(AG) 12/19/17

Drawn By: AG; 12/12/17

ORIGINAL DOC. SIZE: 11"x17"

CERTIFICATION:

This well location shown on this permit plat was surveyed on the ground under my direct supervision. This plat is for Texas Railroad Commission permit purpose only and should not be considered a boundary survey.

William J. Keating
Texas Reg. No. 5041



TOPOGRAPHIC
LOYALTY INNOVATION LEGACY
2803 NORTH BIG SPRING • MIDLAND, TEXAS 79705
TELEPHONE: (432) 682-1663 OR (800) 767-1663 • FAX (432) 682-1743
WWW.TOPOGRAPHIC.COM
Texas FIRM Registration NO. 10042500
FILE NAME: LO_UL_BLK6_DDU_A_4006LS_REV3

AJAX RESOURCES, LLC.

LEASE NAME & WELL NO.:

UL BLK 6 DDU A #4006LS

TOPOGRAPHY & VEGETATION:

NATURAL MESQUITE PASTURE

NEAREST TOWN IN COUNTY:

±21.63 MILES NORTHEAST OF ANDREWS, TEXAS

LOCATION DESCRIPTION:

SHL/PP/FTP: SECTION 40, BLOCK 6, UNIVERSITY LANDS SURVEY

LTP/BHL: SECTION 26, BLOCK 6, UNIVERSITY LANDS SURVEY

ANDREWS COUNTY, TEXAS

QES Directional Drilling, Inc.

11390 FM 830
Willis, TX 77318
Phone: (936) 856-4332
Fax: (936) 856-8678



April 17, 2019

Railroad Commission of Texas
Oil and Gas Division
1701 North Congress Avenue
Austin, Texas 78711

I Christopher Hughes, certify that I am employed by QES Directional Drilling, Inc. That I did on the day(s) of 3/26/2019 through 4/14/2019, conduct or supervise the taking of an MWD Survey from a depth of 1813' to a depth of 23353'; that the data is true, correct, complete, and within the limitations of the tool as set forth by Quintana Energy Services (QES).

I certify that I am authorized and qualified to make this report; that this survey was conducted at the request of Diamondback Energy, for the UL BLK 6 DDU A 4006WH, API No. 42-003-47993 in Andrews County, Texas. I certify that I have reviewed this report and find that it conforms to the principles and procedures as set forth by QES Directional Drilling, Inc.

Sincerely,

Christopher Hughes
MWD Compliance Manager
QES Directional Drilling, Inc.