

## RAILROAD COMMISSION OF TEXAS

rev. 5/19

Oil and Gas Division  
Field OperationsH-5 / H-15 Pressure Test Inspection  
ATTACHMENT SHEETNOTIFICATION NO. **375905**  
DISTRICT **08**OPERATOR **LIME ROCK RESOURCES IV-A, L.P.**LEASE/FACILITY# **50151**LEASE/FACILITY **UL 10 HARMON**FIELD **EMMA (ELLENBURGER)**WELL NUMBER **3W**COUNTY **ANDREWS**

## MECHANICAL INTEGRITY TEST (H-5/H-15)

NOTE: 60 MINUTE TEST REQUIRED FOR WELLS TESTED WITH AIR/GAS.

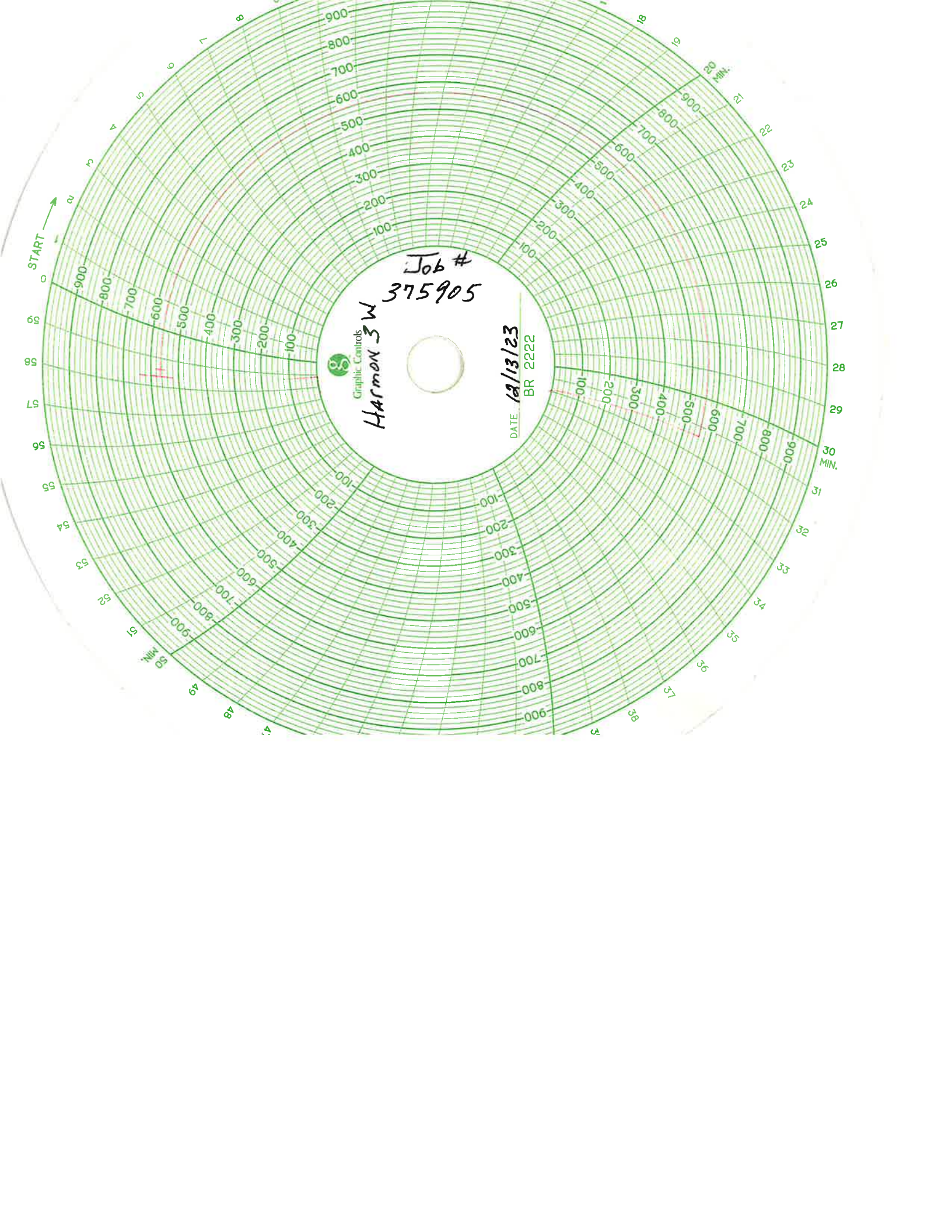
TYPE OF TEST: ☒ H-5 UIC # **000116266** ☐ H-15REASON FOR TEST: ☒ ANNULAL/5 YEAR ☐ WORKOVER ☐ NEW WELL ☐ OTHER \_\_\_\_\_WELLBORE DATA: Tubing size: **4 1/2** in Casing/Liner size: **7** inPacker Depth: **8710** ft RRC BUQW: **1000/16** ft Max Inj Pressure **4375** psiPermitted Interval of Injection: Top **8750** ft Bottom **12799** ftPressure Recorder: Spring Size **1000** psi Chart Size **1000** psi Clock **60** minRange of Monitor Gauges: Tubing **1000** psi Production Casing **1000** psi Surface Casing \_\_\_\_\_ psiCan the Surface Casing be monitored ☒ YES ☐ NO  
(If NO Explain) \_\_\_\_\_

| TIME       | Tubing Pressure | Production Casing Pressure | Surface Casing Pressure | <input type="checkbox"/> N/A Liner Pressure |
|------------|-----------------|----------------------------|-------------------------|---|
| Initial    | 2105            | 560                        | 0                       |   |
| 15 Minutes | 2105            | 560                        | 0                       |   |
| 30 Minutes | 2105            | 560                        | 0                       |   |
| 45 Minutes |                 |                            |                         |   |
| 60 Minutes |                 |                            |                         |   |
|            |                 |                            |                         |   |
|            |                 |                            |                         |   |

## Comments:

MIT H-5 Notification: Production casing maintained test pressure of 560 psi for the required length of time. No field

NAME: **Abdulmonem Salem**DATE: **12/13/24**



Job #  
375905

Graphic Controls  
Harmon 3W

DATE 12/13/23  
BR 2222

62

Company \_\_\_\_\_  
Lease \_\_\_\_\_  
Date \_\_\_\_\_  
Packer Make \_\_\_\_\_  
Tubing Pressure \_\_\_\_\_  
Casing Pressure \_\_\_\_\_  
Surf CCG Pressure \_\_\_\_\_  
Service Company \_\_\_\_\_  
Driver/Supervisor \_\_\_\_\_  
Company Representative \_\_\_\_\_  
RRC Requested \_\_\_\_\_

Well No \_\_\_\_\_  
Depth \_\_\_\_\_  
Model \_\_\_\_\_  
15 min \_\_\_\_\_  
15 min \_\_\_\_\_  
15 min \_\_\_\_\_  
hr chart \_\_\_\_\_  
hr o'clock \_\_\_\_\_

Witnessed by RRC Y N

Company \_\_\_\_\_  
Lease \_\_\_\_\_  
Date \_\_\_\_\_  
Packer Make \_\_\_\_\_  
Tubing Pressure \_\_\_\_\_  
Casing Pressure \_\_\_\_\_  
Surf CCG Pressure \_\_\_\_\_  
Service Company \_\_\_\_\_  
Driver/Supervisor \_\_\_\_\_  
Company Representative \_\_\_\_\_  
RRC Requested Y N

Company Hamrock  
Lease 12-13-23  
Date of Test D.L.  
Packer Make \_\_\_\_\_  
Tubing Pressure: 0 min \_\_\_\_\_  
Casing Pressure: 0 min \_\_\_\_\_  
Surf CCG Pressure: 0 min \_\_\_\_\_  
to spring \_\_\_\_\_  
Service Company \_\_\_\_\_  
Driver/Supervisor \_\_\_\_\_  
Company Representative \_\_\_\_\_  
RRC Requested N

Well No 3W  
Depth 8710'  
Model Lerman  
15 min \_\_\_\_\_  
15 min \_\_\_\_\_  
15 min \_\_\_\_\_  
hr chart \_\_\_\_\_  
30 min \_\_\_\_\_  
30 min \_\_\_\_\_  
30 min \_\_\_\_\_  
hr o'clock 0  
Witnessed by RRC N