



ver_011514bf

[illegible]

[illegible]



ver_011514b1



WELL: Wemac 7					CONTRACTOR: Norton					RIG:		5							
RPT DATE: April 17, 2014					SPUD DATE: 3/29/14					CASING		OD	WT	GRD	MD	TVD			
AFE #:		14-1641-00-01			API #:					DFS: 19		Conductor		16	65	H-40	54	54	
LEASE:					REPORT NO: 20					Surface		11-3/4	42	H-40	1,784	1,784			
FIELD:					DOL: 20					Intermediate		8-5/8	32	J-55	5,299	5,299			
ELEV:		3,534		RKB:		14			LAST BOP TEST: 4/2/14										
MD:		9,258		TVD:		9,255													
24 HR FTG:		254		HRS DRLG:		24			CSGHD:										
24 HOUR SUMMARY		Drill & Slide f/ 9004' t/9258', 254' @ 10.58 fph																	
ACTIVITY PLANNED		Drill Ahead to 9450' casing point																	
DRILLING FLUID					Daily Mud Cost:					Cum Mud Cost:					SHOE TEST:				
TIME	MW	FV	WL	PH	CAKE	GELS (10s/10m/30m)			PV	YP	CL	K	Pf	Mf	Ca	OIL	LGS	HTHP	
17:05	9.0	32.0	8.2	10.5	0	3	6			5	11			0.30	0.50	1,800		2.89	
PRESSURE PARAMETERS					PORE PRESSURE:					REDUCED PUMP RATES									
GAS SHOWS	BG:	16	MAX:	280	REMARKS:					PUMP		SPM	PRESS		DEPTH				
	CONN:	191	CL:							#1		57	149		7,737				
	TRIP:		LITHOLOGY:	90% Limestone, 10% Shale					#2		67	294		7,737					
SHOW DEPTHS		ROP Before/During After			GAS			MUD WT.			CHLORIDES				REMARKS				
BIT DATA																			
NO.	SIZE	MAKE		TYPE		SER NO.	NOZZLES	RE-RUN	IN	OUT	FEET	HRS	WOB	RPM	ROP				
5	7.88	Hughes		DP606X		7149491	6X12		7,924		254	24.0	15	111	11				
4	7.88	Ulterra		U616m		22265	6X16s	N	5,300	7,924	2,624	88.0	15	63	30				
BIT NO.	4	INNER	2	OUTER	1	DULL	ct	LOC	I	SEAL	GAUGE	I	OTHER	none	RP	angle			
HYDRAULICS DATA																			
PUMP	MAKE	MODEL		LINER	STK	SPM	PSI	GPM	GPS	EFF %	ECD	AV DP	AV DC	BIT HHP	PUMP HHP				
1	Ideco	T1000		6.000	10.000	105	1260	379	3.61	95									
2	Ideco	T1000		6.000	10.000														
BHA																			
DESCRIPTION:		PDC Bit, 1.75" BH Motor, Stab, Muleshoe, NMDC, 16 DC																	
LENGTH	536.13			BHA WT. AIR			BHA WT. MUD			HRS. ON JARS									
ROT. WT.	226			P.U. WT.			230			S.O. WT.			221			TORQUE			
SURVEY DATA																			
MD		ANGLE		AZIMUTH		TVD		N/S	COORDINATES		E/W	V. SECTION		DLS					
9,005		1.60		290.00		9,002		-84.8	-36.0			-84.8		0.3					
9,099		2.10		339.90		9,096		-82.8	-37.8			82.8		1.7					
9,192		3.90		1.70		9,189		-78.0	-38.3			78.0		2.3					
CONSUMABLES																			
DIESEL FUEL (gal) Rcvd/Used/On Hand:		/860/3735					DRILL H2O (gal) Rcvd/Used/On Hand:												
FROM	TO	HRS	CODE		OPERATIONS														
06:00	07:30	1.5	Drilling		Slide f/ 9004' t/ 9012' 8'@ 5.3 fph wob 10k spm 105 gpm 366 spp 1225														
07:30	08:30	1.0	Drilling		Rotate f/ 9012' t/ 9035' 23' fph 23' wob 14k spm 106 gpm 370 spp 1237														
08:30	10:00	1.5	Drilling		Slide f/ 9035' t/ 9044' 8'@ 5.3 fph wob 15k - 20k spm 106 gpm 366 spp 1245														
10:00	11:30	1.5	Drilling		Rotate f/ 9044' t/ 9066' 22' fph 14.6' wob 15k spm 106 gpm 370 spp 1225														
11:30	13:00	1.5	Drilling		Slide f/ 9066' t/ 9076', 10' @ 6.7 fph, wob 8k, spm 106, gpm 383, spp 1180, motor 111														
13:00	15:00	2.0	Drilling		Rotate f/ 9076' t/ 9097', 21' @ 10.5 fph, wob 14k, spm 105, gpm 379, spp 1180, rpm 60, motor 110, pump 10 bbl LCM sweep every kelly														
15:00	16:30	1.5	Drilling		Slide f/ 9097' t/ 9104', 7' @ 4.7 fph, wob 8k, spm 105, gpm 379, spp 1115, motor 110														
16:30	18:00	1.5	Drilling		Rotate f/ 9104' t/ 9128', 20' @ 13.3 fph, wob 14k, spm 105, gpm 379, spp 1180, rpm 60, motor 110, pump 10 bbl LCM sweep every kelly														
18:00	19:00	1.0	Drilling		Slide f/ 9128' t/ 9134', 6' @ 6 fph, wob 8k, spm 106, gpm 383, spp 1140, motor 111														
19:00	20:30	1.5	Drilling		Rotate f/ 9134' t/ 9159', 25' @ 16.7 fph, wob 15k, spm 105, gpm 379, spp 1240, rpm 60, motor 110, pump 10 bbl LCM sweep every kelly														
20:30	23:00	2.5	Drilling		Slide f/ 9159' t/ 9169, 10' @ 4 fph, wob 18k, spm 105, gpm 379, spp 1160, motor 110														
23:00	04:30	5.5	Drilling		Rotate f/ 9169' t/ 9253', 84' @ 15.3 fph, wob 15k, spm 105, gpm 379, spp 1260, rpm 60, motor 110, pump 10 bbl LCM sweep every kelly														
04:30	06:00	1.5	Drilling		Slide f/ 9253' t/ 9258', 5' @ 3.3 fph, wob 15k, spm 105, gpm 379, spp 1160, motor 110														
TOTAL HRS 24.0																			
WEATHER																			
GEN. CONDITIONS:					WIND SPEED:					WIND DIRECTION:					TEMP:				
COMMENTS:																			
COST DATA																			
AFE AMT:		\$800,500		Daily Drlg Cost:		\$49,729		Intangibles Cum:		\$977,631		Cum Well Cost:		\$1,096,170					
AFE TWC:		\$1,534,000		Cum Drlg Cost:		\$1,096,170		Tangibles Cum:		\$118,538									
DRILLING SUPERVISOR:					Thomas Hendrix/Butch Lambert					RIG PHONE:					432-400-2845				
www.wellez.net WellEz Information Management LLC ver_011514bf																			



WELL: Wemac 7										CONTRACTOR: Norton										RIG: 5																			
RPT DATE: April 16, 2014										SPUD DATE: 3/29/14										CASING					OD	WT	GRD	MD	TVD										
AFE #: 14-1641-00-01					API #:					DFS: 18					Conductor					16	65	H-40	54	54															
LEASE:										REPORT NO: 19										Surface					11-3/4	42	H-40	1,784	1,784										
FIELD:										DOL: 19										Intermediate					8-5/8	32	J-55	5,299	5,299										
ELEV: 3,534					RKB: 14					LAST BOP TEST: 4/2/14																													
MD: 9,004					TVD: 9,001																																		
24 HR FTC: 312					HRS DRLG: 20					CSGHD:																													
24 HOUR SUMMARY										Drilling & Slide f/ 8692' t/ 8704' , Work stuck pipe free , drill f/ 8704' t/ 8879', lost circ., cut mud wt, pump LCM, regain circ, drill f/ 8879' t/ 9004'																													
ACTIVITY PLANNED										Continue drilling 7-7/8" production hole to TD @ 9450'																													
DRILLING FLUID										Daily Mud Cost:										Cum Mud Cost:										SHOE TEST:									
TIME	MW	FV	WL	PH	CAKE	GELS (10s/10m/30m)	PV	YP	CL	K	Pf	Mf	Ca	OIL	LGS	HTHP																							
17:05	9.1	29.0	10.0	11.0	0	3	5	5	9			0.30	0.40	1,800	2.00																								
PRESSURE PARAMETERS										PORE PRESSURE:										REDUCED PUMP RATES																			
GAS SHOWS		BG:	88	MAX:	300	REMARKS:					PUMP		SPM		PRESS		DEPTH																						
		CONN:	446	CL:						#1		57		149		7,737																							
		TRIP:	LITHOLOGY: 100% Limestone					#2		67		294		7,737																									
SHOW DEPTHS			ROP Before/During After			GAS			MUD WT.			CHLORIDES			REMARKS																								
BIT DATA																																							
NO.	SIZE	MAKE		TYPE		SER NO.	NOZZLES	RE-RUN	IN	OUT	FEET	HRS	WOB	RPM	ROP																								
5	7.88	Hughes		DP606X		7149491	6X12		7,924		312	20.0	15	111	15.6																								
4	7.88	Ulterra		U616m		22265	6X16s	N	5,300	7,924	2,624	88.0	15	63	30																								
BIT NO.	4	INNER	2	OUTER	1	DULL	ct	LOC	I	SEAL	GAUGE	I	OTHER	none	RP	angle																							
HYDRAULICS DATA																																							
PUMP	MAKE	MODEL		LINER	STK	SPM	PSI	GPM	GPS	EFF %	ECD	AV DP	AV DC	BIT HHP	PUMP HHP																								
1	Ideco	T1000		6.000	10.000	105	1260	383	3.61	95																													
2	Ideco	T1000		6.000	10.000																																		
BHA																																							
DESCRIPTION: PDC Bit, 1.75" BH Motor, Stab, Muleshoe, NMDC, 16 DC																																							
LENGTH	536.13			BHA WT. AIR			BHA WT. MUD			HRS. ON JARS																													
ROT. WT.	221			P.U. WT.			226			S.O. WT.			215			TORQUE																							
SURVEY DATA																																							
MD		ANGLE		AZIMUTH		TVD		N/S	COORDINATES		E/W	V. SECTION		DLS																									
8,631		1.20		263.20		8,628		-87.6		-25.4		-87.6		0.3																									
8,725		2.40		286.60		8,722		-87.1		-28.2		-87.1		1.5																									
8,818		1.10		282.00		8,815		-86.4		-31.0		86.4		1.4																									
8,912		1.90		287.80		8,909		-85.7		-33.3		-85.7		0.9																									
CONSUMABLES										DIESEL FUEL (gal) Rvcd/Used/On Hand: 4500/958/4595										DRILL H2O (gal) Rvcd/Used/On Hand:																			
FROM		TO		HRS		CODE		OPERATIONS																															
06:00		08:30		2.5		Drilling		Slide f/ 8692' t/ 8704' 12' @ 4.8 fph wob 9k spm 105 gpm 379 spp 1230																															
08:30		09:00		0.5		Other		Stuck pipe @ 8704' on connection ,Work pipe free with 215k t/ 260k up																															
09:00		13:00		4.0		Drilling		Drilling f/ 8704' t/ 8785' 81' @ 20.2 fph wob 15k rpm 55 spm 104 gpm 375 spp 1385																															
13:00		13:30		0.5		Lubricate Rig		Service rig																															
13:30		15:30		2.0		Drilling		Slide f/ 8785' t/ 8795', 10' @ 5 fph, wob 8k, spm 105, gpm 379, spp 1230, motor 110 rpm																															
15:30		17:30		2.0		Drilling		Drilling f/ 8795' t/ 8879', 84' @ 42 fph, wob 15k, rpm 55, motor 110, spm 104, gpm 375, spp 1350 - Lost circulation @ 8879', mud wt in 9.5 ppg																															
17:30		20:30		3.0		Cond Mud & Circ		Lost circulation, P/U off btm, lower mud wt, pump LCM sweep, regain circulation, circulate & cond mud wt to 9 ppg																															
20:30		22:00		1.5		Drilling		Slide f/ 8879' t/ 8889', 10' @ 6.6 fph, wob 8k, spm 105, gpm 379, spp 1230, motor 110 rpm																															
22:00		03:00		5.0		Drilling		Drilling f/ 8889' t/ 8972', 83' @ 16.6 fph, wob 15k, rpm 55, motor 110, spm 104, gpm 375, spp 1260, pump 10 bbl LCM sweep every kelly																															
03:00		04:00		1.0		Drilling		Slide f/ 8972' t/ 8978', 6' @ 6 fph, wob 8k, spm 106, gpm 383, spp 1170, motor 111 rpm																															
04:00		06:00		2.0		Drilling		Drilling f/ 8978' t/ 9004', 26' @ 13 fph, wob 15k, rpm 55, motor 111, spm 105, gpm 383, spp 1260, pump 10 bbl LCM sweep every kelly																															



WELL: Wemac 7				CONTRACTOR: Norton				RIG: 5									
RPT DATE: April 15, 2014				SPUD DATE: 3/29/14				CASING		OD	WT	GRD	MD	TVD			
AFE #: 14-1641-00-01		API #:		DFS: 17				Conductor		16	65	H-40	54	54			
LEASE:				REPORT NO: 18				Surface		11-3/4	42	H-40	1,784	1,784			
FIELD:				DOL: 18				Intermediate		8-5/8	32	J-55	5,299	5,299			
ELEV: 3,534		RKB: 14		LAST BOP TEST: 4/2/14													
MD: 8,692		TVD: 8,689															
24 HR FTG: 437		HRS DRLG: 24		CSGHD:													
24 HOUR SUMMARY		Rotate & Slide f/8255' t/ 8689 , AROP 18.2															
ACTIVITY PLANNED		Continue directional drilling production hole															
DRILLING FLUID				Daily Mud Cost:				Cum Mud Cost:				SHOE TEST:					
TIME	MW	FV	WL	PH	CAKE	GELS (10s/10m/30m)		PV	YP	CL	K	Pf	Mf	Ca	OIL	LGS	HTHP
17:05	9.1	29.0		10.5	0			1				0.60	0.30	2,000		2.13	
PRESSURE PARAMETERS				PORE PRESSURE:				REDUCED PUMP RATES									
GAS SHOWS	BG:	175	MAX:	300	REMARKS:				PUMP	SPM		PRESS	DEPTH				
	CONN:	254	CL:						#1	57		149	7,737				
	TRIP:		LITHOLOGY:	50% Shale, 50% LS,				#2	67		294	7,737					
SHOW DEPTHS		ROP Before/During After		GAS		MUD WT.		CHLORIDES		REMARKS							
BIT DATA																	
NO.	SIZE	MAKE		TYPE	SER NO.	NOZZLES	RE-RUN	IN	OUT	FEET	HRS	WOB	RPM	ROP			
5	7.88	Hughes		DP606X	7149491	6X12		7,924		437	24.0	15	111	18			
4	7.88	Ulterra		U616m	22265	6X16s	N	5,300	7,924	2,624	88.0	15	63	30			
BIT NO.	4	INNER	2	OUTER	1	DULL	ct	LOC	I	SEAL	GAUGE	I	OTHER	none	RP	angle	
HYDRAULICS DATA																	
PUMP	MAKE	MODEL		LINER	STK	SPM	PSI	GPM	GPS	EFF %	ECD	AV DP	AV DC	BIT HHP	PUMP HHP		
1	Ideco	T1000		6.000	10.000												
2	Ideco	T1000		6.000	10.000	106	1420	3.61	383	95							
BHA																	
DESCRIPTION: PDC Bit, 1.75" BH Motor, Stab, Muleshoe, NMDC, 16 DC																	
LENGTH	536.13		BHA WT. AIR		BHA WT. MUD		HRS. ON JARS										
ROT. WT.	214		P.U. WT.		220		S.O. WT.		208		TORQUE						
SURVEY DATA																	
MD	ANGLE		AZIMUTH		TVD	N/S	COORDINATES		E/W	V. SECTION		DLS					
8,256	3.10		253.00		8,253	-85.3	-11.5		-85.3	2.7							
8,350	3.00		253.70		8,347	-86.7	-16.2		88.2	0.1							
8,444	2.20		277.80		8,441	-87.2	-20.4		-87.2	1.4							
8,537	1.40		256.00		8,534	-87.2	-23.3		-87.2	1.1							
CONSUMABLES		DIESEL FUEL (gal) Rcvd/Used/On Hand:				/819/1053		DRILL H2O (gal) Rcvd/Used/On Hand:									
FROM	TO	HRS	CODE		OPERATIONS												
06:00	07:30	1.5	Drilling		Slide f/ 8255' t/ 8265' 10' @ 6.6 fph wob 15k spm 106 gpm 382 spp 1260												
07:30	08:00	0.5	Drilling		Rotate drill f/ 8265' t/ 8286 21' @ 42 fph wob 9k rpm 55 spm 105 gpm 379 spp 1300, pump 10 bbl LCM sweep every kelly												
08:00	09:30	1.5	Drilling		Slide f/ 8286' t/ 8296' 10' @ 6.6 fph wob 15k spm 106 gpm 382 spp 1200												
09:30	11:30	2.0	Drilling		Rotate drill f/ 8296' t/ 8348', 52' @ 26 fph ,wob 9k ,rpm 55 ,spm 105 , gpm 379 spp 1300, pump 10 bbl LCM sweep every kelly												
11:30	13:30	2.0	Drilling		Slide f/ 8348' t/ 8355' 7' @ 3.5 fph wob 15k spm 106 gpm 382 spp 1090												
13:30	16:30	3.0	Drilling		Rotate drill f/ 8355' t/ 8411', 56' @ 18.7 fph ,wob 9k, rpm rot 55, motor 111, spm 106, gpm, 383 spp 1180, pump 10 bbl LCM sweep every kelly												
16:30	18:00	1.5	Drilling		Slide f/ 8411' t/ 8421' 10' @ 6.7 fph, wob 18k, spm 106, gpm 383, motor 111, spp 1175												
18:00	23:30	5.5	Drilling		Rotate drill f/ 8421' t/ 8536', 115' @ 20.9 fph, wob 10-12k, rpm rot 60 , motor 111, spm 106, gpm 383 spp 1250, pump 10 bbl LCM sweep every kelly												
23:30	02:00	2.5	Drilling		Slide f/ 8536' t/ 8546' 10' @ 4 fph, wob 8k, spm 106, gpm 383, motor 111, spp 1220, pump 10 bbl LCM sweep every kelly												
02:00	03:00	1.0	Drilling		Rotate drill f/ 8546' t/ 8598', 52' @ 52 fph, wob 12-15k, rpm rot 60 , motor 111, spm 106, gpm 383 spp 1450, pump 10 bbl LCM sweep every kelly												
03:00	04:30	1.5	Drilling		Slide f/ 8598 t/ 8608' 10' @ 10 fph, wob 8-15k, spm 106, gpm 383, motor 111, spp 1220, pump 10 bbl LCM sweep every kelly												
04:30	06:00	1.5	Drilling		Rotate drill f/ 8608' t/ 8692', 84' @ 56 fph, wob 12-15k, rpm rot 60 , motor 111, spm 106, gpm 383 spp 1450, pump 10 bbl LCM sweep every kelly												
TOTAL HRS		24.0															
WEATHER																	
GEN. CONDITIONS:				WIND SPEED:				WIND DIRECTION:				TEMP:					
COMMENTS:																	
COST DATA																	
AFE AMT:		\$800,500		Daily Drlg Cost:		\$35,616		Intangibles Cum:		\$874,349		Cum Well Cost:		\$992,887			
AFE TWC:		\$1,534,000		Cum Drlg Cost:		\$992,887		Tangibles Cum:		\$118,538							
DRILLING SUPERVISOR:				Thomas Hendrix/Butch Lambert				RIG PHONE:				432-400-2845					
www.wellez.net WellEz Information Management LLC ver_011514bf																	

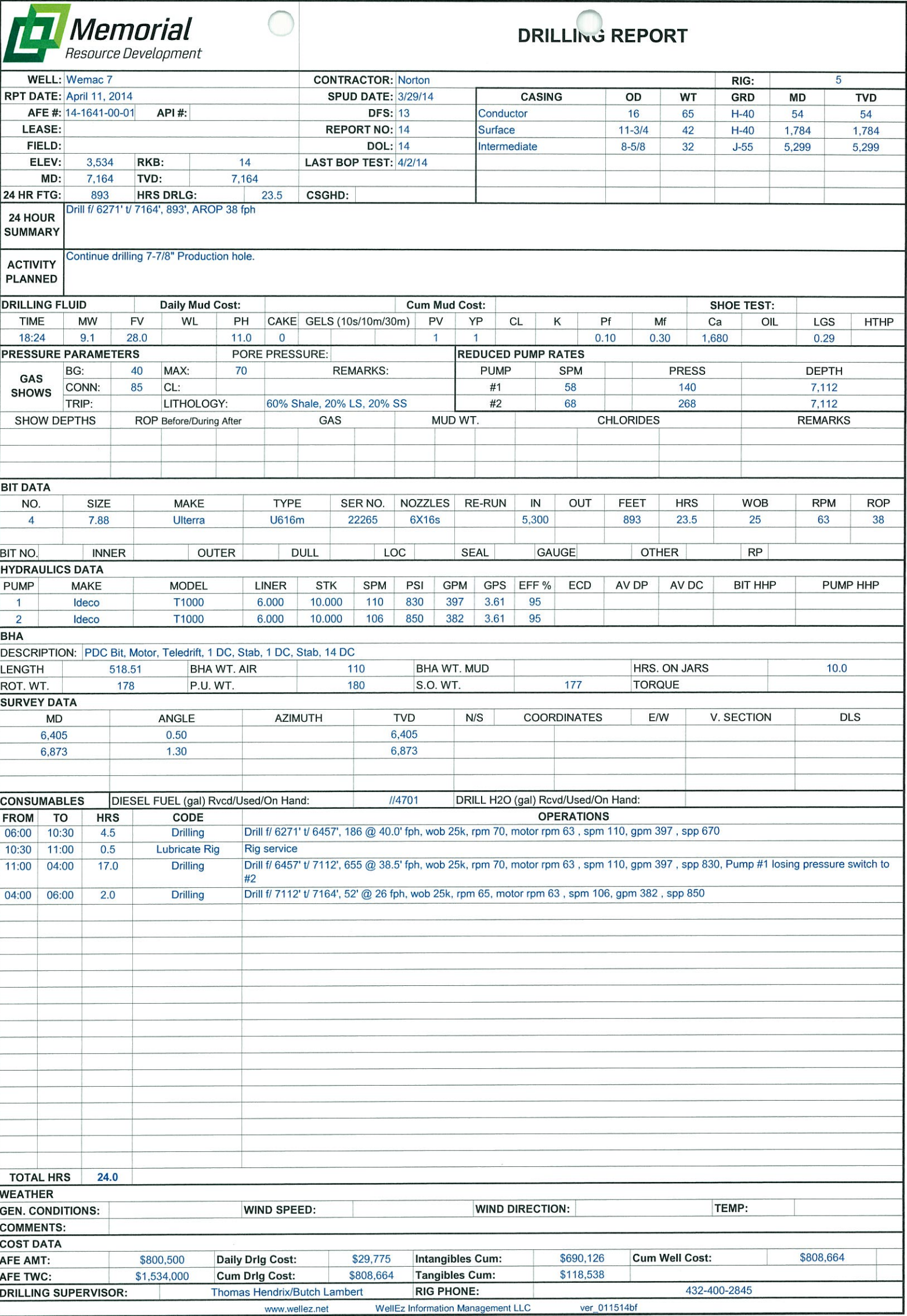


WELL: Wemac 7				CONTRACTOR: Norton				RIG: 5									
RPT DATE: April 14, 2014				SPUD DATE: 3/29/14				CASING		OD	WT	GRD	MD	TVD			
AFE #: 14-1641-00-01		API #:		DFS: 16				Conductor		16	65	H-40	54	54			
LEASE:				REPORT NO: 17				Surface		11-3/4	42	H-40	1,784	1,784			
FIELD:				DOL: 17				Intermediate		8-5/8	32	J-55	5,299	5,299			
ELEV: 3,534		RKB: 14		LAST BOP TEST: 4/2/14													
MD: 8,255		TVD: 8,251															
24 HR FTG: 331		HRS DRLG: 14.5		CSGHD:													
24 HOUR SUMMARY		Finish out of hole, P/U directional BHA, TIH, rotate & slide f/ 7924' t/ 8077', pipe stuck, work free, rotate & slide f/ 8077' t/ 8255', AROP 22.8 fph															
ACTIVITY PLANNED		Continue directional drilling production hole															
DRILLING FLUID				Daily Mud Cost:				Cum Mud Cost:				SHOE TEST:					
TIME	MW	FV	WL	PH	CAKE	GELS (10s/10m/30m)		PV	YP	CL	K	Pf	Mf	Ca	OIL	LGS	HTHP
17:05	9.2	30.0		11.0	0		1 1	1	1			0.60	0.30	2,000		1.07	
PRESSURE PARAMETERS				PORE PRESSURE:				REDUCED PUMP RATES									
GAS SHOWS	BG:	66	MAX:	440	REMARKS:				PUMP	SPM		PRESS	DEPTH				
	CONN:	388	CL:						#1	57		149	7,737				
	TRIP:	200	LITHOLOGY:	50% Shale, 50% LS,				#2	67		294	7,737					
SHOW DEPTHS		ROP Before/During After		GAS		MUD WT.		CHLORIDES		REMARKS							
BIT DATA																	
NO.	SIZE	MAKE		TYPE	SER NO.	NOZZLES	RE-RUN	IN	OUT	FEET	HRS	WOB	RPM	ROP			
5	7.88	Hughes		DP606X	7149491	6X12		7,924		331	14.5	15	111	23			
4	7.88	Ulterra		U616m	22265	6X16s	N	5,300	7,924	2,624	88.0	15	63	30			
BIT NO.	4	INNER	2	OUTER	1	DULL	ct	LOC	I	SEAL	GAUGE	I	OTHER	none	RP	angle	
HYDRAULICS DATA																	
PUMP	MAKE	MODEL		LINER	STK	SPM	PSI	GPM	GPS	EFF %	ECD	AV DP	AV DC	BIT HHP	PUMP HHP		
1	Ideco	T1000		6.000	10.000	106	1260	382	3.61	95							
2	Ideco	T1000		6.000	10.000				3.61	95							
BHA																	
DESCRIPTION: PDC Bit, 1.75" BH Motor, Stab, Muleshoe, NMDC, 16 DC																	
LENGTH	536.13		BHA WT. AIR				BHA WT. MUD				HRS. ON JARS						
ROT. WT.	206		P.U. WT.		212		S.O. WT.		200		TORQUE						
SURVEY DATA																	
MD		ANGLE		AZIMUTH		TVD		N/S		COORDINATES		E/W		V. SECTION		DLS	
7,824		4.48		194.30		7,822		-58.7		3.1		-58.7					
7,881		4.20		197.30		7,879		-62.9		2.0		-62.9				0.6	
7,975		4.70		199.10		7,972		-69.8		-0.3		69.8				0.6	
8,069		4.00		210.50		8,067		-76.3		-3.3		76.3				1.2	
CONSUMABLES		DIESEL FUEL (gal) Rcvd/Used/On Hand:				/1328/1872		DRILL H2O (gal) Rcvd/Used/On Hand:									
FROM	TO	HRS	CODE		OPERATIONS												
06:00	07:00	1.0	Trips		Finish toh ,Lay down motor , Stab,Bit												
07:00	09:30	2.5	Trips		Pick up Tri city directional tools 6.5 " 1.75 5.3 Performance mud motor , Scribe motor ,Test MWD												
09:30	14:00	4.5	Trips		Tih t/ 7924'												
14:00	19:30	5.5	Drilling		Slide f/ 7924' t/ 7932' 8' @ 16 fph pump pressure off bottom 1000 psi on bottom 1400 psi , gpm 337, Rotate & slide drill f/ 7932' t/ 8077', 145' @ 26.4 fph wob 12, rpm 50, Motor rpm 97 - Pipe Torq and stuck												
19:30	21:00	1.5	Other		After sliding 6', rotate 4', ROP increased to 100 fph and stuck pipe, string wt 200K work to 250K while torquing pipe, worked free, back ream, pump LCM sweep, ease to btm and resume drilling												
21:00	02:00	5.0	Drilling		Control drill rotate with 10 WOB, slide 3-13 WOB, rotate & slide f/ 8077' t/ 8161', 84', 16.8 fph, 106 spm, 382 gpm, 1230 spp, 60 rpm, motor 111 rpm, ream and pump 10 bbl LCM sweep every kelly												
02:00	06:00	4.0	Drilling		Rotate & slide f/ 8161' t/ 8255', 94', 23.5 fph, 15 wob, 106 spm, 382 gpm, 1260 spp, 60 rpm, motor 111 rpm, ream and pump 10 bbl LCM sweep every kelly												



WELL: Wemac 7						CONTRACTOR: Norton						RIG: 5							
RPT DATE: April 13, 2014						SPUD DATE: 3/29/14						CASING		OD	WT	GRD	MD	TVD	
AFE #: 14-1641-00-01		API #:				DFS: 15						Conductor		16	65	H-40	54	54	
LEASE:						REPORT NO: 16						Surface		11-3/4	42	H-40	1,784	1,784	
FIELD:						DOL: 16						Intermediate		8-5/8	32	J-55	5,299	5,299	
ELEV: 3,534		RKB:		14		LAST BOP TEST: 4/2/14													
MD: 7,924		TVD: 7,924																	
24 HR FTG: 174		HRS DRLG: 15.5				CSGHD:													
24 HOUR SUMMARY	Drill fl 7164' t/ 7924', AROP 11.2 fph, circ while rigging up gyro, drop gyro, POOH to BHA, retrieve gyro, POOH w/ BHA																		
ACTIVITY PLANNED	Complete L/D stabs, mud motor, & bit, P/U directional BHA, TIH, drill & nudge well back to vertical																		
DRILLING FLUID				Daily Mud Cost:				Cum Mud Cost:								SHOE TEST:			
TIME	MW	FV	WL	PH	CAKE	GELS (10s/10m/30m)		PV	YP	CL	K	Pf	Mf	Ca	OIL	LGS	HTHP		
17:05	9.2	30.0		9.0	0		1	1	1	1			0.10	0.30	2,000	1.29			
PRESSURE PARAMETERS				PORE PRESSURE:				REDUCED PUMP RATES											
GAS SHOWS	BG:	33	MAX:	190	REMARKS:				PUMP		SPM	PRESS		DEPTH					
	CONN:	120	CL:						#1		57	149		7,737					
	TRIP:		LITHOLOGY:	90% Shale, 10% LS,				#2		67	294		7,737						
SHOW DEPTHS		ROP Before/During After			GAS			MUD WT.			CHLORIDES			REMARKS					
BIT DATA																			
NO.	SIZE	MAKE		TYPE		SER NO.	NOZZLES	RE-RUN	IN	OUT	FEET	HRS	WOB	RPM	ROP				
4	7.88	Ulterra		U616m		22265	6X16s		5,300		174	15.5	15	63	11				
BIT NO.		INNER		OUTER		DULL		LOC		SEAL		GAUGE		OTHER		RP			
HYDRAULICS DATA																			
PUMP	MAKE	MODEL		LINER	STK	SPM	PSI	GPM	GPS	EFF %	ECD	AV DP	AV DC	BIT HHP	PUMP HHP				
1	Ideco	T1000		6.000	10.000														
2	Ideco	T1000		6.000	10.000	109	800	393	3.61	95									
BHA																			
DESCRIPTION: PDC Bit, Motor, Teledrift, 1 DC, Stab, 1 DC, Stab, 14 DC																			
LENGTH	518.51		BHA WT. AIR			BHA WT. MUD			HRS. ON JARS										
ROT. WT.	191		P.U. WT.			193			S.O. WT.			186			TORQUE				
SURVEY DATA																			
MD		ANGLE		AZIMUTH		TVD		N/S	COORDINATES		E/W	V. SECTION		DLS					
7,728		4.80				7,728													
7,872		4.10				7,872													
CONSUMABLES																			
DIESEL FUEL (gal) Rcvd/Used/On Hand:						//3200						DRILL H2O (gal) Rcvd/Used/On Hand:							
FROM	TO	HRS	CODE		OPERATIONS														
06:00	09:00	3.0	Drilling		Drill fl 7768' t/ 7799' 31' @ 10.3 fph wob20k rpm 68 spm 108 gpm 389 spp 775 Teledrift survey @ 7728' 4.8 deg														
09:00	10:00	1.0	Deviation Survey		Wire line Survey @ 7765' 5.0 deg														
10:00	13:00	3.0	Drilling		Drill fl 7799' t/ 7831' 32' @ 10.6 fph wob12k-15k rpm 68 spm 108 gpm 389 spp 775 , Back off wob to control angle														
13:00	13:30	0.5	Lubricate Rig		Service rig														
13:30	23:00	9.5	Drilling		Drill fl 7831' t/ 7924', 93 @ 9.7 fph wob12k-15k rpm 68 spm 108 gpm 389 spp 800 , Back off wob & back ream twice to control angle														
23:00	01:00	2.0	Cond Mud & Circ		Circ btms up while rigging up to run gyro														
01:00	04:00	3.0	Trips		Drop gyro & POOH to BHA														
04:00	05:00	1.0	Deviation Survey		Retrieve gyro														
05:00	06:00	1.0	Trips		POOH w/ BHA,to stabilizer														

[illegible]





[illegible]



WELL: Wemac 7						CONTRACTOR: Norton						RIG: 5																	
RPT DATE: April 8, 2014						SPUD DATE: 3/29/14						CASING		OD	WT	GRD	MD	TVD											
AFE #:		14-1641-00-01		API #:		DFS: 10						Conductor		16	65	H-40	54	54											
LEASE:						REPORT NO: 11						Surface		11-3/4	42	H-40	1,784	1,784											
FIELD:						DOL: 11						Intermediate		8-5/8	32	J-55	5,299	5,299											
ELEV:		3,534		RKB:		14		LAST BOP TEST: 4/2/14																					
MD:		5,300		TVD:		5,300																							
24 HR FTG:				HRS DRLG:				CSGHD:																					
24 HOUR SUMMARY		POOH, run 8 5/8" Interned. Csg., cement 8 5/8" Csg., cut off & install "B" section of WH, wouldn't test, remove "B" section & re-test same.																											
ACTIVITY PLANNED		Re-test "B" section of WH & finish NU & test BOPE, PU BHA #3, TIH & drill out																											
DRILLING FLUID				Daily Mud Cost:				Cum Mud Cost:				SHOE TEST:																	
TIME	MW	FV	WL	PH	CAKE	GELS (10s/10m/30m)		PV	YP	CL	K	Pf	Mf	Ca	OIL	LGS	HTHP												
17:45	10.0	29.0		8.5	0			1	1	#####		0.10	0.20	2,440		0.48													
PRESSURE PARAMETERS				PORE PRESSURE:				REDUCED PUMP RATES																					
GAS SHOWS		BG:		MAX:		REMARKS:				PUMP		SPM		PRESS		DEPTH													
		CONN:		CL:						#1																			
		TRIP:		LITHOLOGY:						#2																			
SHOW DEPTHS			ROP Before/During After			GAS			MUD WT.			CHLORIDES			REMARKS														
BIT DATA																													
NO.		SIZE		MAKE		TYPE		SER NO.		NOZZLES		RE-RUN		IN		OUT		FEET		HRS		WOB		RPM		ROP			
BIT NO.		INNER		OUTER		DULL		LOC		SEAL		GAUGE		OTHER		RP													
HYDRAULICS DATA																													
PUMP		MAKE		MODEL		LINER		STK		SPM		PSI		GPM		GPS		EFF %		ECD		AV DP		AV DC		BIT HHP		PUMP HHP	
1		Ideco		T1000		6.000		10.000																					
2		Ideco		T1000		6.000		10.000																					
BHA																													
DESCRIPTION:																													
LENGTH						BHA WT. AIR				BHA WT. MUD				HRS. ON JARS															
ROT. WT.						P.U. WT.				S.O. WT.				TORQUE															
SURVEY DATA																													
MD			ANGLE			AZIMUTH			TVD			N/S		COORDINATES			E/W		V. SECTION			DLS							
CONSUMABLES		DIESEL FUEL (gal) Rvcd/Used/On Hand:						//4701		DRILL H2O (gal) Rcvd/Used/On Hand:																			
FROM	TO	HRS		CODE		OPERATIONS																							
06:00	07:00	1.0		Cond Mud & Circ		Sweep hole & circ bottom up. Hole clean; prep to POOH LD 8" DCs & Stndg 6" DCs & DP to run 8 5/8" intermediate Csg.																							
07:00	10:00	3.0		Trips		POOH Stndg DP & 6" DCs & LD 8" BHA while WO PU/LD machine.																							
10:00	12:00	2.0		Run Csg & Cement		Hld Sfty Mtg W/ & RU Byrd Casing Crew and PU/LD machine.																							
12:00	17:30	5.5		Run Csg & Cement		Run 8 5/8" Interned Csg as follows: 8 5/8" FS, one 8 5/8", 32ppf, J-55, 8 Rd ST&C shoe Jt., 8 5/8" FC and 126 Jts. of 8 5/8" Csg. Landed casing @ 5299'; FS @ 5297' & FC @ 5253'. Tagged bottom with no problems.																							
17:30	18:30	1.0		Run Csg & Cement		Hld Sfty Mtg w/ & RU Basic Energy Serv., while RD Mike Byrd Csg crew & PU/LD truck. Prep to cement intermediate Csg. Test lines to 3,000 PSI.																							
18:30				Run Csg & Cement		Cement 8 5/8" Intermediate Csg as follows: Pump 20 Bbl fresh water spacer followed by 232.74 Bbl (540 SX) 50/50 Poz w/ Cls C Lead Cement containing 10% gel, 5% salt, 25 pps celloflakes, 2% C-41P, 5 pps Kol Seal, .25pps PFA & 2% C-35 at 8 BPM w/ 224 to 481 PSI. Pump 71.06 Bbl (300 SX)																							
				Run Csg & Cement		Cls C Tail cement containing .255 pps PFA @ 8 BPM w/ 391 to 499 PSI. Lead Cmt WT 11.8 ppg; yield 2.42 & 13.54 gps water requirements. Tail Cmt WT 14.8; yield 1.33; and water requirements 6.31 gps. Displace w/ 308 Bbl FW @ 10 - 8 BPM W/ 89 to 1119 PSI. Final circ press 1675. Land																							
18:30	21:30	3.0		Run Csg & Cement		plug @ 21:25 4/7/2014 w/ 1675 PSI. Floats held OK, had 100% returns throughout job and good lift pressures. Circ 12 Bbl (28 SX) Cmt to surface. Top of tail cement @ 3775'.																							
21:30	22:30	1.0		Run Csg & Cement		RD Basic & prep to cut off & NU B section & BOPE.																							
22:30	00:30	2.0		Nipple Up B.O.P.		RU ND crew & nipple down BOP , remove drilling spool & dsa																							
00:30	01:30	1.0		Nipple Up B.O.P.		Set 8 5/8" slips w/ 125K. & cut off casing.																							
01:30	03:30	2.0		Nipple Up B.O.P.		Make final cut & install well head "B" Section.																							
03:30	04:00	0.5		Nipple Up B.O.P.		Attempt to test "B" Section; wouldn't test.																							
04:00	04:30	0.5		Nipple Up B.O.P.		Remove "B" Section of WH to determine cause of leak. It was determined the lower slip seal did not hold.																							
04:30	06:00	1.5		UnPlanned		WO new ring gasket for "B" Section / Casing Head connection.																							
TOTAL HRS		24.0																											
WEATHER																													
GEN. CONDITIONS:		Ptty Cloudy, windy & warm				WIND SPEED:		15 - 20 MPH		WIND DIRECTION:		North		TEMP:		75													
COMMENTS:																													
COST DATA																													
AFE AMT:		\$800,500		Daily Drlg Cost:		\$63,670		Intangibles Cum:		\$589,471		Cum Well Cost:		\$593,161															
AFE TWC:		\$1,534,000		Cum Drlg Cost:		\$593,161		Tangibles Cum:		\$3,689																			
DRILLING SUPERVISOR:				Nick Byrne / Thomas Hendrix				RIG PHONE:				432-400-2845																	
www.wellez.net WellEz Information Management LLC ver_011514bf																													



WELL: Wemac 7						CONTRACTOR: Norton						RIG:		5					
RPT DATE: April 7, 2014						SPUD DATE: 3/29/14						CASING		OD	WT	GRD	MD	TVD	
AFE #:		14-1641-00-01		API #:		DFS: 9						Conductor		16	65	H-40	54	54	
LEASE:						REPORT NO: 10						Surface		11-3/4	42	H-40	1,784	1,784	
FIELD:						DOL: 10													
ELEV:		3,534		RKB:		14		LAST BOP TEST: 4/2/14											
MD:		5,300		TVD:		5,300													
24 HR FTG:		865		HRS DRLG:		17		CSGHD:											
24 HOUR SUMMARY		Drill f' / 4435' t' 5300' , circ sweep around, Wiper trip to bha ,Circ Sweep to clean hole for 8 5/8 casing run,																	
ACTIVITY PLANNED		Toh lay down 8" DC ,Rig up run 8 5/8 32# J-55ST&C casing to 5300' , Circ & Cement, install well head & nipple up																	
DRILLING FLUID				Daily Mud Cost:				Cum Mud Cost:				SHOE TEST:							
TIME	MW	FV	WL	PH	CAKE	GELS (10s/10m/30m)		PV	YP	CL	K	Pf	Mf	Ca	OIL	LGS	HTHP		
15:45	10.0	29.0		10.0	0			1	1	#####		0.10	0.40	2,320		0.12			
PRESSURE PARAMETERS				PORE PRESSURE:				REDUCED PUMP RATES											
GAS SHOWS	BG:	7	MAX:	100	REMARKS:				PUMP	SPM		PRESS	DEPTH						
	CONN:	504	CL:	185,000					#1										
	TRIP:		LITHOLOGY:	90%sandstone 10% Limestone				#2											
SHOW DEPTHS		ROP Before/During After		GAS		MUD WT.		CHLORIDES		REMARKS									
BIT DATA																			
NO.	SIZE	MAKE		TYPE		SER NO.	NOZZLES	RE-RUN	IN	OUT	FEET	HRS	WOB	RPM	ROP				
3	11.00	Halliburton		MM65D		12303796	6X16		4,252		865	21.0	30		42				
2	11.00	Ulterra		U616M		23937	6X15	N	1,784	4,252	2,468	47.0	25		53				
BIT NO.	2	INNER	8	OUTER	8	DULL	BT	LOC	All Over	SEAL	GAUGE	I	OTHER	none	RP	PR			
HYDRAULICS DATA																			
PUMP	MAKE		MODEL		LINER	STK	SPM	PSI	GPM	GPS	EFF %	ECD	AV DP	AV DC	BIT HHP	PUMP HHP			
1	Ideco		T1000		6.000	10.000	83	950	300	3.61	95								
2	Ideco		T1000		6.000	10.000	78	950	281	3.61	95								
BHA																			
DESCRIPTION:		Intermediate Hole BHA																	
LENGTH	550.28		BHA WT. AIR		60,300		BHA WT. MUD		53,000		HRS. ON JARS								
ROT. WT.	157,000		P.U. WT.		160,000		S.O. WT.		154,000		TORQUE								
SURVEY DATA																			
MD		ANGLE		AZIMUTH		TVD		N/S	COORDINATES		E/W	V. SECTION		DLS					
4,708		1.50				4,708													
5,269		0.50				5,269													
CONSUMABLES																			
DIESEL FUEL (gal) Rvcd/Used/On Hand:				//4701		DRILL H2O (gal) Rcvd/Used/On Hand:													
OPERATIONS																			
FROM	TO	HRS	CODE		Drill 4435' to 4626' (191' @ 76 1/2'/Hr.) WOB 35k, 68 RPM, 160 SPM @n 576 GPM, SPP 850 PSI														
06:00	08:30	2.5	Drilling																
08:30	09:00	0.5	Lubricate Rig		Service Rig														
09:00	11:30	2.5	Drilling		Drill 4626' to 4751' (125' @ 50'/Hr.) WOB 35k, 68 RPM, 160 SPM @ 576 GPM, SPP 900 PSI														
11:30	12:00	0.5	Deviation Survey		WL survey @ 4708' (1 1/2 deg.).														
12:00	18:30	6.5	Drilling		Drill 4751' to 4969' (218' @ 33.5'/Hr.) WOB 35k, 68 RPM, 160 SPM @ 576 GPM, SPP 1000 PSI														
18:30	19:00	0.5	Deviation Survey		Wire line survey @ 2426' 3/4 deg														
19:00	00:30	5.5	Drilling		Drill 4969' to 5300' (331' @ 60.1'/Hr.) WOB 35k, 68 RPM, 160 SPM @ 576 GPM, SPP 1000 PSI														
00:30	01:30	1.0	Cond Mud & Circ		Circulate 40 bbl high vis sweep														
01:30	02:00	0.5	Deviation Survey		Wire line survey @ 5269' 1/2 deg														
02:00	05:00	3.0	Trips		Wiper trip to bha														
05:00	06:00	1.0	Cond Mud & Circ		Pump sweep to run 8 5/8 32# ST&C casing														

[illegible]



[illegible]

[illegible]

[illegible]

[illegible]





