

RAILROAD COMMISSION OF TEXAS

Oil and Gas Division

Tracking No.: 98075

Status: Submitted

This facsimile W-2 was generated electronically
from data submitted to the RRC.

API No. 42- 003-45756

7. RRC District No.
08

8. RRC Lease No.

Oil Well Potential Test, Completion or Recompletion Report, and Log

1. FIELD NAME (as per RRC Records or Wildcat) ANDECTOR (WICHITA ALBANY)		2. LEASE NAME UNIVERSITY 'B11' '18'		9. Well No. 3H	
3. OPERATOR'S NAME (Exactly as shown on Form P-5, Organization Report) MEWBOURNE OIL COMPANY		RRC Operator No. 562560		10. County of well site ANDREWS	
4. ADDRESS BOX 7698 TYLER, TX 75711-0000				11. Purpose of filing Initial Potential <input checked="" type="checkbox"/> Retest <input type="checkbox"/> Reclass <input type="checkbox"/> Well record only (Explain in remarks) <input type="checkbox"/>	
5. If Operator has changed within last 60 days, name former operator					
6a. Location (Section, Block, and Survey) 18, 11, UNIVERSITY LANDS		6b. Distance and direction to nearest town in this county. FRANKEL CITY, TX			
12. If workover or reclass, give former field (with reservoir) & Gas ID or oil lease no. FIELD & RESERVOIR N/A				GAS ID or OIL LEASE #	Oil-G Gas-G
13. Type of electric or other log run Combo of Induction/Neutron/Density				14. Completion or recompletion date 05/27/2014	

SECTION I - POTENTIAL TEST DATA IMPORTANT: Test should be for 24 hours unless otherwise specified infield rules.

15. Date of test 05/31/2014		16. No. of hours tested 24		17. Production method (Flowing, Gas Lift, Jetting, Pumping- Size & Type of pump) Flowing		18. Choke size OPEN	
19. Production during Test Period		Oil - BBLS 132.0	66	Gas - MCF 2505	Water - BBLS 500	Gas - Oil Ratio 260.0	Flowing Tubing Pressure PSI
20. Calculated 24-Hour Rate		Oil - BBLS 132.0	66	Gas - MCF 2505	Oil Gravity-API-60° 37.9	260.0	Casing Pressure PSI
21. Was swab used during this test? Yes <input type="checkbox"/> No <input checked="" type="checkbox"/>				22. Oil produced prior to test (New & Reworked wells) 411.0		23. Injection Gas-Oil Ratio 500.0	
REMARKS: N/A							

INSTRUCTIONS: File an original and one copy of the completed Form W-2 in the appropriate RRC District Office within 30 days after completing a well and within 10 days after a potential test. If an operator does not properly report the results of a potential test within the 10-day period, the effective date of the allowable assigned to the well will not extend back more than 10 days before the W-2 was received in the District Office. (Statewide Rules 16 and 51) To report a completion or recompletion, fill in both sides of this form. To report a retest, fill in only the front side.

WELL TESTERS CERTIFICATION

I declare under penalties prescribed in Sec. 91.143, Texas Natural Resources Code, that I conducted or supervised this test by observation of (a) meter readings or (b) the top and bottom gauges of each tank into which production was run during the test. I further certify that the potential test data shown above is true, correct, and complete, to the best of my knowledge.

Signature: Well Tester

Name of Company

RRC Representative

OPERATOR'S CERTIFICATION

I declare under penalties prescribed in Sec. 91.143, Texas Natural Resources Code, that I am authorized to make this report, that this report was prepared by me or under my supervision and direction, and that data and facts stated therein are true, correct and complete, to the best of my knowledge.

MEWBOURNE OIL COMPANY

Analyst

Type or printed name of operator's representative

Title of Person

(903) 561-2900

06/17/2014

Sue Hearon

Telephone: Area Code

Number

Month Day Year

Signature

SECTION III DATA ON WELL COMPLETION AND LOG (Not Required on Re-test)									
24. Type of Completion New Well <input checked="" type="checkbox"/> Deepening <input type="checkbox"/> Plug Back <input type="checkbox"/> Other <input type="checkbox"/>				25. Permit to Drill, Plug Back or Deepen DATE 12/06/2013 PERMIT NO. 773026 Rule 37 Exception CASE NO. 0285668 Water Injection Permit PERMIT NO. Salt Water Disposal Permit PERMIT NO. Other PERMIT NO.					
26. Notice of Intention to Drill this well was filed in Name of MEWBOURNE OIL COMPANY									
27. Number of producing wells on this lease in this field (reservoir) including this well 3			28. Total number of acres in this lease 925.2						
29. Date Plug Back, Deepening, Workover or Drilling Operations: 01/19/2014		Commenced 01/23/2014		Completed 1262.0		30. Distance to nearest well, Same Lease & Reservoir			
31. Location of well, relative to nearest lease boundaries 100.0 Feet From North Line and 700.0 Feet from West Line of the UNIVERSITY 'B11' '18' Lease									
32. Elevation (DF, RKB, RT, GR ETC.) 3286 GL				33. Was directional survey made other than inclination (Form W-12)? <input checked="" type="checkbox"/> Yes <input type="checkbox"/> No					
34. Top of Pay 7164 MD:14198		35. Total Depth 7164 MD:14198		36. P. B. Depth		37. Surface Casing Determined by Field Rules <input type="checkbox"/> Recommendation of T.D.W.R. <input checked="" type="checkbox"/> Railroad Commission (Special) <input type="checkbox"/>		Dt. of Letter 11/08/2013 Dt. of Letter	
38. Is well multiple completion? <input type="checkbox"/> Yes <input checked="" type="checkbox"/> No									
39. If multiple completion, list all reservoir names (completions in this well) and Oil Lease or Gas ID No. FIELD & RESERVOIR N/A				GAS ID or OIL LEASE #		Oil-G Gas-G		Well #	
40. Intervals Drilled by: Rotary Tools <input checked="" type="checkbox"/> Cable Tools				41. Name of Drilling Contractor				42. Is Cementing Affidavit Attached? <input checked="" type="checkbox"/> Yes <input type="checkbox"/> No	
43. CASING RECORD (Report All Strings Set in Well)									
CASING SIZE	WT #/FT.	DEPTH SET	MULTISTAGE TOOL DEPTH	TYPE & AMOUNT CEMENT (sacks)	HOLE SIZE	TOP OF CEMENT	SLURRY VOL. cu. ft.		
9 5/8		1510		C 600	12 1/4	SURFACE	956.0		
7		7462		C 1260	8 3/4	1450	2274.4		
44. LINER RECORD									
Size	Top	Bottom	Sacks Cement	Screen					
4 1/2	7221	14115							
45. TUBING RECORD				46. Producing Interval (this completion) Indicate depths of perforation or open hole					
Size	Depth Set	Packer Set	From L1 7585	To 14108					
2 7/8	6644		From	To					
			From	To					
			From	To					
47. ACID, SHOT, FRACTURE, CEMENT SQUEEZE, ETC.									
Depth Interval			Amount and Kind of Material Used						
7585.0		14108.0	4,352,895 G SLICKWATER, 79,525 G XL GEL W/585,480# 100 MESH SAND, 865,080# 20/40 WHITE SAND & 315,260# 20/40 SB EXCEL						
48. FORMATION RECORD (LIST DEPTHS OF PRINCIPAL GEOLOGICAL MARKERS AND FORMATION TOPS)									
Formations	Depth	Formations	Depth						
TUBB		SILURIAN							
PERMIAN DETRITAL		ELLENBURGER							
LEON		YATES	2882.0 MD: 2882.0						
SPRABERRY		SEVEN RIVERS	3120.0 MD: 3120.0						
DEAN		QUEEN	3424.0 MD: 3424.0						
WOLFCAMP		GRAYBURG	4105.0 MD: 4105.0						

48. FORMATION RECORD (LIST DEPTHS OF PRINCIPAL GEOLOGICAL MARKERS AND FORMATION TOPS)			
Formations	Depth	Formations	Depth
CANYON		SAN ANDRES - CO2 FLOOD, HIGH FLOWS, H2S, CORROSIVE	4400.0 MD: 4400.0
PENNSYLVANIAN		HOLT	5290.0 MD: 5290.0
MCKEE		GLORIETA	5416.0 MD: 5416.0
STRAWN		CLEARFORK	5838.0 MD: 5838.0
FUSSELMAN		WICHITA ALBANY	6885.0 MD: 6936.0
DEVONIAN			
REMARKS: N/A			

1. Operator's Name (As shown on Form P-6, Organization Report) MEWBOURNE	2. RRC Operator No. 4	3. RRC District No. 8	4. County of Well Site ANDREWS
5. Field Name (Wildcat or exactly as shown on RRC Records) ANDECTOR	6. API No. 42-003-45756	7. Drilling Permit No. 773026	
8. lease name UNIVERSITY B11 18	9. Rule 37 Case No.	10. Oil Lease/Gas ID No.	11. Well No. 3H

CASING CEMENTING DATA:		SURFACE CASING	INTER-MEDIATE CASING	PRODUCTION CASING		MULTI-STAGE CEMENTING PROCESS	
				Single String	Multiple Parallel Strings	Tool	Shoe
12. Cementing Date		12/31/13					
13. Drilled Hole Size		12 1/4"					
Est. % wash or hole enlargement		52%					
14. Size of casing (in. O.D.)		9 5/8"					
15. Top of Liner (ft.)		-					
16. Setting depth (ft.)		1510					
17. Number of centralizers used		11					
18. Hrs. Waiting on cement before drill-out		22					
1 st Slurry	19. API cement used: No. of sacks	400					
	Class	C					
	Additives	SEE REMARKS					
2 nd Slurry	19. API cement used: No. of sacks	200					
	Class	C					
	Additives	SEE REMARKS					
3 rd Slurry	19. API cement used: No. of sacks						
	Class						
	Additives						
1 st	20. Slurry pumped: Volume (cu.ft.)	698					
	Height (ft.)	2228.7					
2 nd	20. Slurry pumped: Volume (cu.ft.)	267					
	Height (ft.)	852.6					
3 rd	20. Slurry pumped: Volume (cu.ft.)						
	Height (ft.)						
Total	20. Slurry pumped: Volume (cu.ft.)	966					
	Height (ft.)	3081					
21. Was cement circulated to ground surface (or bottom of cellar) outside casing?		YES					
22. Remarks LEAD:CLASS C+.005%SF+2%CACL+.13LBS/SK CF+4%BENTONITE TAIL:CLASS C+.005%SF+1%CACL CIRC:43 BBLs = 139 SX TO PIT							

CEMENTING TO PLUG AND ABANDON	PLUG #1	PLUG #2	PLUG #3	PLUG #4	PLUG #5	PLUG #6	PLUG #7	PLUG #8
23. Cementing date								
25. Depth to bottom of tubing or drill pipe (ft.)								
26. Sacks of cement used (each plug)								
27. Slurry volume pumped (cu.ft.)								
28. Calculated top of plug (ft.)								
29. Measured top of plug, if tagged (ft.)								
30. Slurry wt. (lb/gal)								
31. Type cement								

CEMENTER'S CERTIFICATE. I declare under penalties in Sec 91 143, Texas Natural Resources Code, that I am authorized to make this certification, that the cementing of casing and/or the placing of cement plugs in this well as shown in the report was performed by me or under my supervision and that the cementing data and facts presented on both sides of this form are true, correct, and complete, to the best of my knowledge
5/29/1912

serv,sup:SAMUEL CONTRERAS
Name and title of cementer's representative

Baker Hughes
pressure pumping
Cementing Company

Samuel Contreras
Signature

2708 West County Road

Hobbs,

N.M.

88240

(575) 392-5556

12/31/13

Address

City,

State,

Zip Code

Tel: Area Code Number

Date: mo. Day yr.

OPERATOR'S CERTIFICATE I declare under penalties prescribed in Sec 91 143 Texas Natural Resources Code that I am authorized to make this certification that I have knowledge of the well data and information presented in this report, and that data and facts presented on both sides of this form Are true, correct, and complete, to the best of my knowledge This certification cover all well data

Sean Puryear
Typed or printed name of operator's representative

Engineer
Title

Sean Puryear
Signature

P.O. Box 5270 Hobbs

NM

88241

(575) 393-5905

02/15/14

Address

City,

State,

Zip Code

Tel: Area Code Number

Date: mo. Day yr.

Instructions to Form W-15, Cementing Report

IMPORTANT Operators and cementing companies must comply with the requirements of the Commission's Statewide Rules 8 (Water Protection), 13(Casing, Cementing, Drilling, and Completion), and 14 (Well Plugging). For offshore operations, see the requirements of Rule 13 (c)

A. What to file An operator should file an original and one copy of the completed Form W-15 for each cementing company used on a well. The cementing of different casing strings on a well by one cementing company may be reported on one form. Form W-15 should be filed with the following.

- An initial oil or gas completion report, Form W-2 or G-1, as required by Statewide or special field rules;
- Form W-4, Application for Multiple Completion, if the well is a multiple parallel casing completion; and
- Form W-3, Plugging Record, unless the W-3 is signed by the cementing company representative. When reporting dry holes, operators must complete Form W-15, in addition to Form W-3, to show any casing cemented in the hole

B. Where to file The appropriate Commission District Office for the county in which the well is located

C. Surface Casing An operator must set and cement sufficient surface casing to protect all usable-quality water strata, as defined by the Texas Department of Water Resources, Austin. Before drilling a well in any field or area in which no field rules are in effect or in which surface casing requirements are not specified in the applicable rules, an operator must obtain a letter from the department of Water Resources stating the protection depth. Surface casing should not be set deeper than 200 feet below the specified depth without prior approval from the Committee

D. Centralizer. Surface Casing must be centralized at the shoe, above and below a stage collar or diverting tool, if run, and through usable-quality water zones. In Non-deviated holes, a centralizer must be placed every fourth joint from the cement shoe to the ground surface or to the bottom of the cellar. All centralizers must meet API specifications

E. Exceptions and alternative casing programs. The District Director may grant an exception to the requirements of Statewide Rule 13 in a written application, an operator must state the reason for the requested exception and outline an alternate program for casing and cementing through the protection depth for strata containing usable-quality water. The District Director may approve, modify, or reject a proposed program. An operator must obtain approval of any exception before beginning casing and cementing operations

F. Intermediate and production casing. For specific technical requirement, operators should consult Statewide Rule 13 (3) and (4)

G. Plugging and abandoning. Cement plugs must be placed in the wellbore as required by Statewide Rule 14. The District director may require additional cement plugs. For onshore or inland wells, a 10-foot cement plug must be placed in the top 100 feet of hole, plus ten percent for each 1,000 feet of depth from the ground surface to the bottom of the plug

To plug and abandon a well, operators must use only cementer's approved by the Director of Field Operations, Cementing companies, service companies or operators can qualify as approved cementers by demonstrating that they are able to mix and pump cement in compliance with Commission rules and regulations

B-2, ref

1. Operator's Name (As shown on Form P-5, Organization Report) Mewbourne	2. RRC Operator No. 4	3. RRC District No. 8	4. County of Well Site Andrews
5. Field Name (Wildcat or exactly as shown on RRC Records) Andector	6. API No. 42-003-45756	7. Drilling Permit No. 773026	
8. Lease Name University B11	9. Rule 37 Case No.	10. Oil Lease/Gas ID No.	11. Well No. 18 #3H

CASING CEMENTING DATA:		SURFACE CASING	INTER-MEDIATE CASING	PRODUCTION CASING		MULTI-STAGE CEMENTING PROCESS	
				Single String	Multiple Parallel Strings	Tool	Shoe
12. Cementing Date				01/08/14			
13. Drilled Hole Size				8.75			
Est. % wash or hole enlargement				84%			
14. Size of casing (in. O.D.)				7"			
15. Top of Liner (ft.)				-			
16. Setting depth (ft.)				7540			
17. Number of centralizers used				5			
18. Hrs. Waiting on cement before drill-out				41.5			
1st Slurry	19. API cement used: No. of sacks			860			
	Class			C			
	Additives			See remarks			
2nd Slurry	19. API cement used: No. of sacks			400			
	Class			C			
	Additives			See remarks			
3rd Slurry	19. API cement used: No. of sacks						
	Class						
	Additives						
1st	20. Slurry pumped: Volume (cu.ft.)			1754.4			
	Height (ft.)			11652.69			
2nd	20. Slurry pumped: Volume (cu.ft.)			620			
	Height (ft.)			3436			
3rd	20. Slurry pumped: Volume (cu.ft.)						
	Height (ft.)						
Total	20. Slurry pumped: Volume (cu.ft.)			2274.4			
	Height (ft.)			15088.69			
21. Was cement circulated to ground surface (or bottom of cellar) outside casing?				NO			
22. Remarks Lead slurry 35:65:6%gel+5%salt+0.13#/sx Cello Flake+0.4%FL-52 Tail slurry 50:50poz C+2%gel+5%salt+0.2%SMS+0.65%FL-52a							

A-1
7"

CEMENTING TO PLUG AND ABANDON	PLUG #1	PLUG #2	PLUG #3	PLUG #4	PLUG #5	PLUG #6	PLUG #7	PLUG #8	PLUG #9	PLUG #10
23. Cementing date										
24. Size of hole or pipe plugged (
25. Depth to bottom of tubing or drill pipe (ft.)										
26. Sacks of cement used (each plug)										
27. Slurry volume pumped (cu.ft.)										
28. Calculated top of plug (ft.)										
29. Measured top of plug, if tagged (ft.)										
30. Slurry wt. (lb/gal)										
31. Type cement										

CEMENTER'S CERTIFICATE I declare under penalties in Sec. 91.143, Texas Natural Resources Code, that I am authorized to make this certification, that the cementing of casing and/or the placing of cement plugs in this well as shown in the report was performed by me or under my supervision, and that the cementing data and facts presented on both sides of this form are true, correct, and complete, to the best of my knowledge. This certification covers cementing data only.

Nathan Taylor Gen spec III
Name and title of cementer's representative

Baker Hughes pps inc
Cementing Company


Signature

2708 West County Road

Hobbs,

N.M.

88240

(505) 392-5556

01/08/14

Address

City,

State,

Zip Code

Tel: Area Code Number

Date: mo. Day yr.

OPERATOR'S CERTIFICATE I declare under penalties prescribed in Sec. 91.143, Texas Natural Resources Code, that I am authorized to make this certification, that I have knowledge of the well data and information presented in this report, and that data and facts presented on both sides of this form are true, correct, and complete to the best of my knowledge. This certification covers all well data.

Sean Puryear

Engineer


Signature

Typed or printed name of operator's representative

Title

P.O. Box 5270

Hobbs

NM

88241

(505) 393-5505

02/15/14

Address

City,

State,

Zip Code

Tel: Area Code Number

Date: mo. Day yr.

Instructions to Form W-15, Cementing Report

IMPORTANT Operators and cementing companies must comply with the requirements of the Commission's Statewide Rules 8 (Water Protection), 13 (Casing Cementing, Drilling, and Completion), and 14 (Well Plugging). For offshore operations, see the requirements of Rule 13 (c).

A. What to file: An operator should file an original and one copy of the completed Form W-15 for each cementing company used on a well. The cementing of different casing strings on a well by one cementing company may be reported on one form. Form W-15 should be filed with the following:

- * An initial oil or gas completion report, Form W-2 or G-1, as required by Statewide or special field rules.
- * Form W-4, Application for Multiple Completion, if the well is a multiple parallel casing completion, and
- * Form W-3, Plugging Record, unless the W-3 is signed by the cementing company representative. When reporting dry holes, operators must complete Form W-15 in addition to Form W-3, to show any casing cemented in the hole.

B. Where to file: The appropriate Commission District Office for the county in which the well is located.

C. Surface Casing: An operator must set and cement sufficient surface casing to protect all usable-quality water strata, as defined by the Texas Department of Water Resources, Austin. Before drilling a well in any field or area in which no field rules are in effect or in which surface casing requirements are not specified in the applicable rules, an operator must obtain a letter from the department of Water Resources stating the protection depth. Surface casing should not be set deeper than 200 feet below the specified depth without prior approval from the Committee.

D. Centralizer: Surface Casing must be centralized at the shoe, above and below a stage collar or diverting tool, if run, and through usable-quality water zones. In non-deviated holes, a centralizer must be placed every fourth joint from the cement shoe to the ground surface or to the bottom of the cellar. All centralizers must meet API specifications.

E. Exceptions and alternative casing programs: The District Director may grant an exception to the requirements of Statewide Rule 13 in a written application, an operator must state the reason for the requested exception and outline an alternate program for casing and cementing through the protection depth for strata containing usable-quality water. The District Director may approve, modify, or reject a proposed program. An operator must obtain approval of any exception before beginning casing and cementing operations.

F. Intermediate and production casing: For specific technical requirements, operators should consult Statewide Rule 13 (3) and (4).

G. Plugging and abandoning: Cement plugs must be placed in the wellbore as required by Statewide Rule 14. The District director may require additional cement plugs. For onshore or inland wells, a 10-foot cement plug must be placed in the top 100 feet of hole, plus ten percent for each 1,000 feet of depth from the ground surface to the bottom of the plug.

To plug and abandon a well, operators must use only cementers approved by the Director of Field Operations. Cementing companies, service companies, or operators can qualify as approved cementers by demonstrating that they are able to mix and pump cement in compliance with Commission rules and regulations.

A-2
711

Groundwater
Advisory Unit

GROUNDWATER PROTECTION DETERMINATION

Date **November 8, 2013**

GAU File No.: SC- **16173**

***** EXPEDITED APPLICATION *****

API Number **00300000**

Attention: **REBECCA DUNN**

RRC Lease No. **000000**

SC_562560_00300000_000000_16173.pdf

**MEWBOURNE OIL CO
P O BOX 7698
TYLER TX 75711**

--Measured--

700 ft FWL

100 ft FNL

MRL:SECTION

Digital Map Location:

X-coord/Long **102.83567**

Y-coord/Lat **32.14107**

Datum **83**

Zone

P-5# 562560

County **ANDREWS**

Lease & Well No. **UNIVERSITY B11 -18- #3H&ALL**

Purpose **ND**

Location **SUR-UL,BLK-11,SEC-18,-- [TD=8000] , [RRC 10] ,**

To protect usable-quality groundwater at this location, the Groundwater Advisory Unit of the Texas Railroad Commission recommends:

The interval from the land surface to a depth of 300 feet and the ZONE from 1000 feet to 1400 feet must be protected.

This recommendation is applicable to all wells drilled in this NW 1/4 SECTION 18 ON THIS LEASE.

Note: Unless stated otherwise, this recommendation is intended to apply only to the subject well and not for area wide use. This recommendation is intended for normal drilling, production, and plugging operations only. It does not apply to saltwater disposal operation into a nonproductive zone (RRC Form W-14).

If you have any questions, please contact us at 512-463-2741, gau@rrc.state.tx.us, or by mail.

Sincerely,


Digitally signed by George Dunfield
DN: c=US, st=TEXAS, o=Railroad
Commission of Texas, ou=Groundwater
Advisory Unit, cn=George Dunfield,
email=george.dunfield@rrc.state.tx.us
Date: 2013.11.08 18:25:15 -0600
George Dunfield, P.G.

GEOLOGIST SEAL



Geologist, Groundwater Advisory Unit
Oil & Gas Division

The seal appearing on this document was authorized by George Dunfield on 11/8/2013
Note: Alteration of this electronic document will invalidate the digital signature.



COMPENSATED NEUTRON GAMMA RAY / CCL LOG

Company Well Field County State	Company	Mewbourne Oil Company			
	Well	University "B11" "18" #3H			
	Field	Andector (Wichita Albany)			
	County	Andrews	State	Texas	
	Location:	API #: 42-003-45756			Other Services
	100' FNL & 700' FWL Sec. 18, Blk. 11-UL				
	SEC	TWP	RGE	Elevation	
	Permanent Datum	Gound Level	Elevation	3286 ft.	K.B. 3305 ft.
	Log Measured From	Kelly Bushing or 19 ft. APD			D.F. NA
	Drilling Measured From	Kelly Bushing			G.L. 3286 ft.

Date	08-January-2014
Run Number	One
Depth Driller	6639 ft. KOP
Depth Logger	6650 ft.
Bottom Logged Interval	6650 ft.
Top Log Interval	Surface
Open Hole Size	8.75 in.
Type Fluid	Water
Density / Viscosity	NA
Max. Recorded Temp.	NA
Estimated Cement Top	NA
Time Well Ready	8:30 pm
Time Logger on Bottom	See Log
Equipment Number	WL - 38025
Location	Hobbs, NM
Recorded By	Danny Claburn
Witnessed By	Mr. Stewie Obet

Borehole Record				Tubing Record			
Run Number	Bit	From	To	Size	Weight	From	To

Casing Record	Size	Wgt/Ft	Top	Bottom
Surface String	9.625 in.		Surface	1500 ft.
Prot. String	7.000 in.		Surface	7386 ft.
Production String				
Liner				

<<< Fold Here >>>

All interpretations are opinions based on inferences from electrical or other measurements and we cannot and do not guarantee the accuracy or correctness of any interpretation, and we shall not, except in the case of gross or willful negligence on our part, be liable or responsible for any loss, costs, damages, or expenses incurred or sustained by anyone resulting from any interpretation made by any of our officers, agents or employees. These interpretations are also subject to our general terms and conditions set out in our current Price Schedule.

Comments

Tracking No.: 98075

1. Field name exactly as shown on proration schedule ANDECTOR (WICHITA ALBANY)		2. Lease name as shown on proration schedule UNIVERSITY 'B11' '18'			
3. Current operator name exactly as shown on P-5 Organization Report MEWBOURNE OIL COMPANY		4. Operator P-5 no. 562560	5. Oil Lse/Gas ID no. 	6. County ANDREWS	7. RRC district 08
8. Operator address including city, state, and zip code BOX 7698 TYLER, TX 75711		9. Well no(s) (see instruction E) 3H			
		10. Classification <input checked="" type="checkbox"/> Oil <input type="checkbox"/> Gas <input type="checkbox"/> Other (see instruction A)			
		11. Effective Date 05/27/2014			

12. Purpose of Filing. (Complete section a or b below.) (See instructions B and G)

a. Change of: ☐ operator ☐ oil or condensate gatherer ☐ gas gatherer ☐ gas purchaser ☐ gas purchaser system code

☐ field name from _____
☐ lease name from _____

OR

b. New RRC Number for: ☒ oil lease ☐ gas well ☐ other well (specify) _____ Due to: ☒ new completion or recompletion ☐ reclass oil to gas ☐ reclass gas to oil

☐ consolidation, unitization, or subdivision (oil lease only)

13. Authorized GAS WELL GAS or CASINGHEAD GAS Gatherer(s) and/or Purchaser(s). (See instruction G)

Gatherer	Purchaser	Name of GAS WELL GAS or CASINGHEAD GAS Gatherer(s) or Purchaser(s) As Indicated in Columns to the Left (Attach an additional sheet in same format if more space is needed)	Purchaser's RRC Assigned System Code	Percent of Take	Full-well stream
X	X	DCP MIDSTREAM, LP(195918)	0001	100.0	

14. Authorized OIL or CONDENSATE Gatherer(s). (See instruction G)

Name of OIL or CONDENSATE Gatherer(s) - List Highest Volume Gatherer First (Attach an additional sheet in same format if more space is needed)	Percent of Take
HOLLYFRONTIER REF & MKTG LLC(393768)	100.0

RRC USE ONLY: Reviewer's initials: _____ Approval date: _____

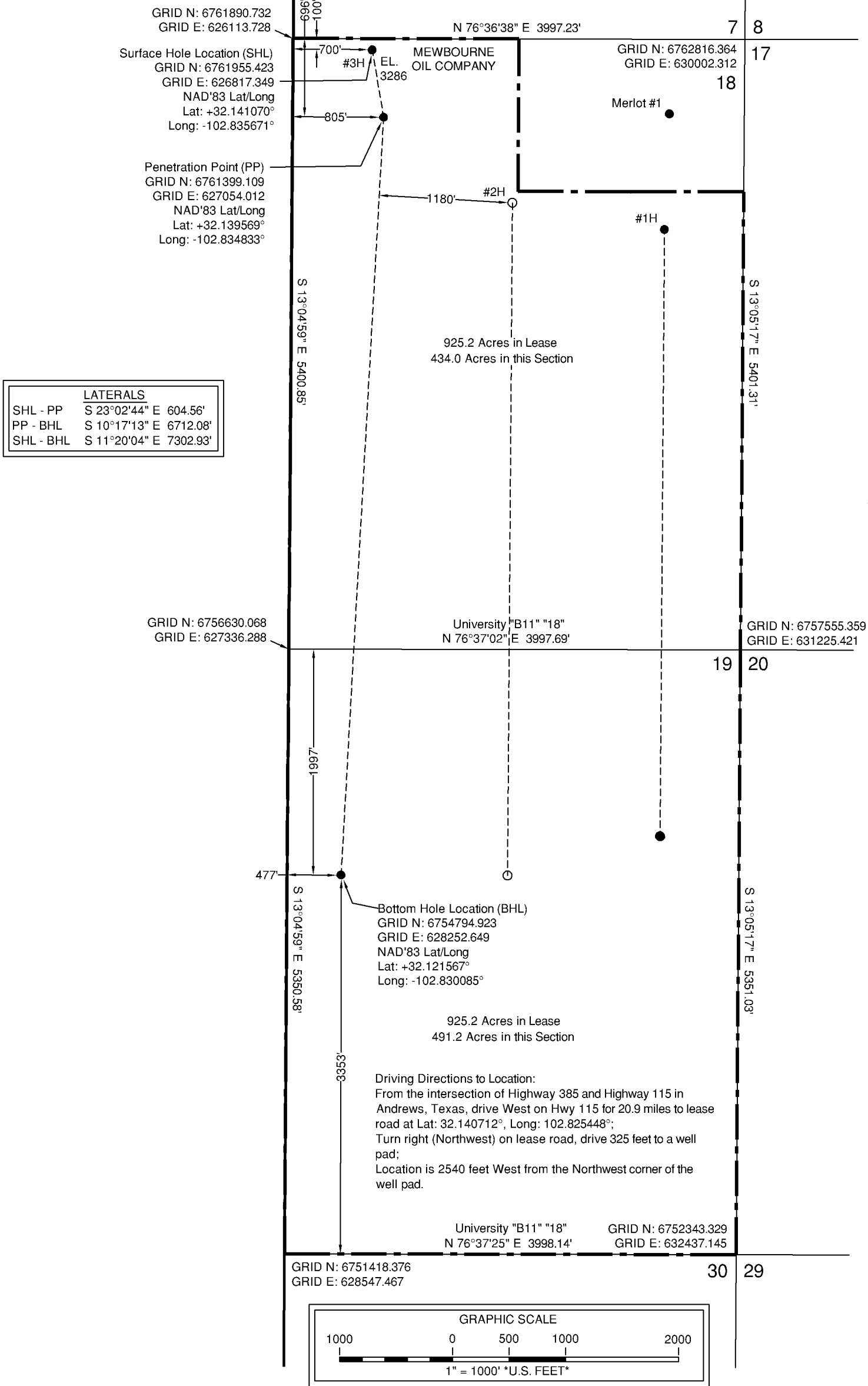
15. PREVIOUS OPERATOR CERTIFICATION FOR CHANGE OF OPERATOR P-4 FILING. Being the PREVIOUS OPERATOR, I certify that operating responsibility for the well(s) designated in this filing, located on the subject lease has been transferred in its entirety to the above named Current Operator. I understand, as Previous Operator, that designation of the above named operator as Current Operator is not effective until this certificate is approved by the Commission.

Name of Previous Operator _____ Name (print) _____ Title _____	Signature _____ <input type="checkbox"/> Authorized Employee of previous operator <input type="checkbox"/> Authorized agent of previous operator (see instruction G) Date _____ Phone with area code _____
--	--

16. CURRENT OPERATOR CERTIFICATION. By signing this certificate as the Current Operator, I certify that all statements on this form are true and correct and I acknowledge responsibility for the regulatory compliance of the subject lease including plugging of well(s) pursuant to Rule 14. I further acknowledge that I assume responsibility for the physical operation, control, and proper plugging of each well designated in this filing. I also acknowledge that I will remain designated as the Current Operator until a new certificate designating a new Current Operator is approved by the Commission.

MEWBOURNE OIL COMPANY Name (print) _____ Analyst Title _____ E-mail Address (optional) production@mewbourne.com	Sue Hearon Signature _____ <input checked="" type="checkbox"/> Authorized Employee of current operator <input type="checkbox"/> Authorized agent of current operator (see instruction G) Date 06/30/2014 Phone with area code (903) 561-2900
---	--

Block 11, University Lands Survey
Andrews County, Texas



Note: Well location is 17.0 miles South-Southwest of the city of Frankel City, Texas.
Note: Survey Reconstruction filed in the Office of Pennell & Marlowe Land Surveyors, Inc.
Note: Well bore location determined from Stryker Directional survey report provided by client.
Note: Bearings and distances are based on The Texas Coordinate System of 1983, North Central Zone.
Note: Coordinates shown herein are on The Texas Coordinate System of 1983, North Central Zone.



Stephen P. Marlowe
REGISTERED PROFESSIONAL LAND SURVEYOR NO. 5715



May 3, 2011

110503B7

Revised 5/07/2014 (JFG)
USGS Quadrangle Sheets: Sand Ranch & Bedford Ranch, Tex.

Railroad Commission Permit Plat

MEWBOURNE OIL COMPANY
University "B11" "18" #3H (As Drilled)
100' FROM NORTH LINE
700' FROM WEST LINE
University "B11" "18" Lease
925.2 Acres being all, Save & Except the
N/2 NE/4, of Section 18 & all of
Section 19, Block 11
University Lands Survey
Andrews County, Texas

Scale: 1" = 1000'