

RAILROAD COMMISSION OF TEXAS

Oil and Gas Division

Tracking No.: 59460

Status: Submitted

This facsimile W-2 was generated electronically
from data submitted to the RRC.

API No. 42- 003-44621

7. RRC District No.
088. RRC Lease No.
21365

Oil Well Potential Test, Completion or Recompletion Report, and Log

1. FIELD NAME (as per RRC Records or Wildcat)

FUHRMAN-MASCHO

2. LEASE NAME

SOUTH FUHRMAN MASCHO UNIT

9. Well No.

5120

3. OPERATOR'S NAME (Exactly as shown on Form P-5, Organization Report)

SANDRIDGE EXPL. AND PROD., LLC

RRC Operator No.

748011

10. County of well site

ANDREWS

4. ADDRESS

123 ROBERT S KERR AVE OKLAHOMA CITY, OK 73102-6406

11. Purpose of filing

Initial Potential

☒

Retest

☐

Reclass

☐Well record only
(Explain in remarks)☐

5. If Operator has changed within last 60 days, name former operator

6a. Location (Section, Block, and Survey)

5, 10, UL

6b. Distance and direction to nearest town in this county.

18 MI SW FROM ANDREWS

12. If workover or reclass, give former field (with reservoir) & Gas ID or oil lease no.

FIELD & RESERVOIR

GAS ID or

OIL LEASE #

Oil-O

Gas-G

Well #

N/A

13. Type of electric or other log run

COMP. NEUTRON

14. Completion or recompletion date

09/13/2012

SECTION I- POTENTIAL TEST DATA IMPORTANT: Test should be for 24 hours unless otherwise specified infield rules.

15. Date of test 09/21/2012	16. No. of hours tested 24	17. Production method (Flowing, Gas Lift, Jetting, Pumping- Size & Type of pump) Pumping			18. Choke size
19. Production during Test Period	Oil - BBLS 20.0	17	Gas - MCF	Water - BBLS 183	Gas - Oil Ratio 850
20. Calculated 24-Hour Rate	Oil - BBLS 20.0	17	Gas - MCF	Water - BBLS 183	Oil Gravity-API-60° 32.0
21. Was swab used during this test? Yes <input type="checkbox"/> No <input checked="" type="checkbox"/>		22. Oil produced prior to test (New & Reworked wells)			23. Injection Gas-Oil Ratio
REMARKS: N/A					

INSTRUCTIONS: File an original and one copy of the completed Form W-2 in the appropriate RRC District Office within 30 days after completing a well and within 10 days after a potential test. If an operator does not properly report the results of a potential test within the 10-day period, the effective date of the allowable assigned to the well will not extend back more than 10 days before the W-2 was received in the District Office. (Statewide Rules 16 and 51) To report a completion or recompletion, fill in both sides of this form. To report a retest, fill in only the front side.

WELL TESTERS CERTIFICATION

I declare under penalties prescribed in Sec. 91.143, Texas Natural Resources Code, that I conducted or supervised this test by observation of (a) meter readings or (b) the top and bottom gauges of each tank into which production was run during the test. I further certify that the potential test data shown above is true, correct, and complete, to the best of my knowledge.

Signature: Well Tester

Name of Company

RRC Representative

OPERATOR'S CERTIFICATION

I declare under penalties prescribed in Sec. 91.143, Texas Natural Resources Code, that I am authorized to make this report, that this report was prepared by me or under my supervision and direction, and that data and facts stated therein are true, correct and complete, to the best of my knowledge.

SANDRIDGE EXPL. AND PROD., LLC

Type or printed name of operator's representative

(405) 429-6414

11/13/2012

Telephone: Area Code

Number

Month Day Year

Regulatory Technician

Title of Person

Chelsey Green

Signature

SECTION III										DATA ON WELL COMPLETION AND LOG (Not Required on Retest)					
24. Type of Completion New Well <input checked="" type="checkbox"/> Deepening <input type="checkbox"/> Plug Back <input type="checkbox"/> Other <input type="checkbox"/>						25. Permit to Drill, Plug Back or Deepen DATE 08/06/2012 PERMIT NO. 745329 Rule 37 Exception CASE NO.									
26. Notice of Intention to Drill this well was filed in Name of SANDRIDGE EXPL. AND PROD., LLC						Water Injection Permit PERMIT NO. Salt Water Disposal Permit PERMIT NO. Other PERMIT NO.									
27. Number of producing wells on this lease in this field (reservoir) including this well 128			28. Total number of acres in this lease 1600.0												
29. Date Plug Back, Deepening, Workover or Drilling Operations: 08/16/2012		Commenced 08/19/2012		Completed 288.0		30. Distance to nearest well, Same Lease & Reservoir 288.0									
31. Location of well, relative to nearest lease boundaries 1400.0 Feet From West Line and 899.0 Feet from North Line of the SOUTH FUHRMAN MASCHO UNIT Lease															
32. Elevation (DF, RKB, RT, GR ETC.) 3250 GL				33. Was directional survey made other than inclination (Form W-12)? <input checked="" type="checkbox"/> Yes <input type="checkbox"/> No											
34. Top of Pay 4351		35. Total Depth 4755		36. P. B. Depth 4719		37. Surface Casing Determined by Field Rules <input type="checkbox"/> Recommendation of T.D.W.R. <input checked="" type="checkbox"/> Railroad Commission (Special) <input type="checkbox"/>		Dt. of Letter 07/24/2012 Dt. of Letter							
38. Is well multiple completion? <input type="checkbox"/> Yes <input checked="" type="checkbox"/> No															
39. If multiple completion, list all reservoir names (completions in this well) and Oil Lease or Gas ID No. FIELD & RESERVOIR N/A						GAS ID or OIL LEASE #		Oil-G Gas-G		Well #					
40. Intervals Drilled by: Rotary Tools <input checked="" type="checkbox"/> Cable Tools		41. Name of Drilling Contractor CAPSTAR				42. Is Cementing Affidavit Attached? <input checked="" type="checkbox"/> Yes <input type="checkbox"/> No									
43. CASING RECORD (Report All Strings Set in Well)															
CASING SIZE		WT #/FT.		DEPTH SET		MULTISTAGE TOOL DEPTH		TYPE & AMOUNT CEMENT (sacks)		HOLE SIZE		TOP OF CEMENT		SLURRY VOL. cu. ft.	
8 5/8		24.0		1682				C 700		12 1/4		SURF		1183.0	
5 1/2		15.5		4755				C 800		7 7/8		SURF		1728.0	
44. LINER RECORD															
Size		Top		Bottom		Sacks Cement			Screen						
N/A															
45. TUBING RECORD															
Size		Depth Set		Packer Set		From 4351			To 4446						
2 7/8		4466				From			To						
						From			To						
						From			To						
47. ACID, SHOT, FRACTURE, CEMENT SQUEEZE, ETC.															
Depth Interval				Amount and Kind of Material Used											
4351.0		4446.0		48 BBLS 7.5% ACID; 316 BBLS 15% ACID; 195 Q CO2; 23500 # TOTAL PROP; 1185 BBLS TOTAL FLUID											
48. FORMATION RECORD (LIST DEPTHS OF PRINCIPAL GEOLOGICAL MARKERS AND FORMATION TOPS)															
Formations		Depth		Formations		Depth									
QUEEN		3685.0													
LOWER GRAYBURG		4240.0													
SAN ANDRES		4560.0													
REMARKS: N/A															

Cementer: Fill in shaded areas
Operator: Fill in other items

Form W-15
Cementing Report
Rev. 4/1/83
HLBRTN1096

RAILROAD COMMISSION OF TEXAS

Oil and Gas Division

1. Operator's Name (As Shown on Form P-5, Organization Report)	2. RRC Operator No.	3. RRC District No.	4. County of Well Site
SANDRIDGE <i>Eyel E. Prod, LLC</i>	748011	08	ANDREWS
5. Field Name (Wildcat or Exactly as Shown on RRC Records)	6. API No.	7. Drilling Permit No.	
<i>Fuhrman Mascho</i>	42-003-44421	745329	
8. Lease Name	9. Rule 37 Case No.	10. Oil Lease/Gas ID No.	11. Well Number
SFMU		21365	5120

CASING CEMENTING DATA:		SURFACE CASING	INTERMEDIATE CASING	PRODUCTION CASING		MULTI-STAGE CEMENTING PROCESS	
				SINGLE STRING	MULTIPLE PARALLEL STRINGS	TOOL	SHOE
12. Cementing Date		8/17/2012					
13. *Drilled Hole Size		12 1/4					
*Ext. % Wash or Hole Enlargement							
14. Size of Casing (in. O.D.)		8 5/8					
15. Top of Liner (ft)							
16. Setting Depth (ft)		1082					
17. Number of Centralizers Used		10					
18. Hrs. Waiting on Cement Before Drill-Out		12+					
1 st Slurry	19. API Cement Used: No. of Sacks >	500					
	Class >	35.65 C					
	Additives >	REMARK 1					
2 nd Slurry	No. of Sacks >	200					
	Class >	C					
	Additives >	REMARK 2					
3 rd Slurry	No. of Sacks >						
	Class >						
	Additives >						
1st	20. Slurry Pumped: Volume (cu.ft.) >	915					
	Height (ft) >	2217					
2nd	Volume (cu.ft.) >	268					
	Height (ft) >	649					
3rd	Volume (cu.ft.) >						
	Height (ft) >						
	Volume (cu.ft.) >	1183					
	Height (ft) >	2866					
21. Was Cement Circulated to Ground Surface (or Bottom of Casing) Outside Casing?		YES					
22. Remarks 1 6% Gel + 3% Salt + 1/8#sk Celloflake 2 2% CaCL2							

OVER ➡

42-003-41021

CEMENTING TO PLUG AND ABANDON	PLUG #1	PLUG #2	PLUG #3	PLUG #4	PLUG #5	PLUG #6	PLUG #7	PLUG #8
3. Cementing Date								
4. Size of Hole or Pipe Plugged (in)								
5. Depth to Bottom of Tubing or Drill Pipe (ft)								
6. Sacks of Cement Used (each plug)								
7. Slurry Volume Pumped (cu.ft.)								
8. Calculated Top of Plug (ft)								
9. Measured Top of Plug, If Tagged (ft)								
10. Slurry Wt. (lbs/gal)								
11. Type Cement								

CEMENTERS CERTIFICATE: I declare under penalties prescribed in Sec. 91.143, Texas Natural Resources Code, that I am authorized to make this certification, that the cementing of casing and/or the placing of cement plugs in this well as shown in the report was performed by me or under my supervision, and that the cementing data and facts presented on both sides of this form are true, correct, and complete, to the best of my knowledge. This certification covers cementing data only.

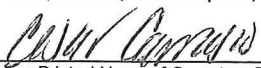
EDGAR MONTES SEVICE SUPERVISOR
Name and Title of Cementer's Representative

O-TEX PUMPING SERVICES
Cementing Company



Signature

1611 East I-20 Midland, Texas 79706 432-686-8559 8/17/2012
Address City State Zip Code Tel: Area Code Number Date: Mo. Day Yr.

OPERATOR'S CERTIFICATE: I declare under penalties prescribed in Sec. 91.143, Texas Natural Resources Code, that I am authorized to make this certification, that I have knowledge of the well data and information presented in this report, and that data and facts presented on both sides of this form are true, correct, and complete, to the best of my knowledge. This certification covers all well data.


Typed or Printed Name of Operators Representative


Title


Signature

123 Robert Skerr Ave Oklahoma City, OK 73102 405-429-6414 10/1/12
Address City State Zip Code Tel: Area Code Number Date: Mo. Day Yr.

Instruction to Form W-15, Cementing Report

IMPORTANT: Operators and cementing companies must comply with the requirements of the Commission's Statewide rules 8 (Water Protection), 3 (Casing, Cementing, Drilling, and Completion, and 14 (Well Plugging). For offshore operations, see the requirements of Rule 13 (c).

1. What to file. An operator should file an original and one copy of the completed Form W-15 for each cementing company used on a well. The cementing of different casing strings on a well by one cementing company may be reported on one form. Form W-15 should be filed with the following:
 - * An initial oil or gas completion report, Form W-2 or G-1, as required by Statewide or special field rules;
 - * Form W-4, Application for Multiple Completion, if the well is a multiple parallel casing completion; and
 - * Form W-3, Plugging Record, unless the W-3 is signed by the cementing company representative. When reporting dry holes, operators must complete W-15, in addition to Form W-3, to show any casing cemented in the hole.
 2. Where to file. The appropriate Commission District Office for the county in which the well is located.
 3. Surface casing. An operator must set and cement sufficient surface casing to protect all usable-quality water strata, as defined by the Texas Department of Water Resources, Austin. Before drilling a well in any field or area in which no field rules are in effect or in which surface casing requirements are not specified in the applicable rules, an operator must obtain a letter from the Department of Water Resources stating the protection depth. Surface casing should not be set deeper than 200 feet below the specified depth without prior approval from the Commission.
 4. Centralizers. Surface casing must be centralized at the shoe, above and below a stage collar or diverting tool, if run, and through usable-quality water zones. In nondeviated holes, a centralizer must be placed every fourth joint from the cement shoe to the ground surface or to the bottom of the cellar. All centralizers must meet API specifications.
 5. Exceptions and alternative casing programs. The District Director may grant an exception to the requirements of Statewide Rule 13. In a written application, an operator must state the reason for the requested exception and outline an alternate program for casing and cementing through the protection depth for strata containing usable-quality water. The District Director may approve, modify, or reject a proposed program. An operator must obtain approval of any exception before beginning casing and cementing operations.
 6. Intermediate and production casing. For specific technical requirements, operators should consult Statewide Rule 12 (b) (3) and (4).
 7. Plugging and abandoning. Cement plugs must be placed in the wellbore as required by Statewide Rule 14. The District Director may require additional cement plugs. For onshore or inland wells, a 10-foot cement plug must be placed in the top of the well, and the casing must be cut off three feet below the ground surface. All cement plugs, except the top plug, must have sufficient slurry volume to fill 100 feet of hole, plus ten percent for each 1000 feet of depth from the ground surface to the bottom of the plug.
- To plug and abandon a well, operators must use only cementers approved by the Director of Field Operations. Cementing companies, service companies, or operators can qualify as approved cementers by demonstrating that they are able to mix and pump cement in compliance with Commission rules and regulations.

Cementer: Fill in shaded areas
Operator: Fill in other items

Form W-15
Cementing Report
Rev. 4/1/83
HLBRTN1096

RAILROAD COMMISSION OF TEXAS

Oil and Gas Division

1. Operator's Name (As Shown on Form P-5, Organization Report) SANDRIDGE EXPLORATION & PRODUCTION	2. RRC Operator No. 748011	3. RRC District No. 08	4. County of Well Site ANDREWS
5. Field Name (Wildcat or Exactly as Shown on RRC Records) Fuhrman Maschu		6. API No. 42-003-44621	7. Drilling Permit No. 745329
8. Lease Name SMFU	9. Rule 37 Case No.	10. Oil Lease/Gas ID No. 21365	11. Well Number #5120

CASING CEMENTING DATA:		SURFACE CASING	INTERMEDIATE CASING	PRODUCTION CASING		MULTI-STAGE CEMENTING PROCESS	
				SINGLE STRING	MULTIPLE PARALLEL STRINGS	TOOL	SHOE
12. Cementing Date				8/19/2012			
13. *Drilled Hole Size				7 7/8			
*Ext. % Wash or Hole Enlargement							
14. Size of Casing (in. O.D.)				5 1/2			
15. Top of Liner (ft)							
16. Setting Depth (ft)				4155			
17. Number of Centralizers Used				30			
18. Hrs. Waiting on Cement Before Drill-Out				12+			
1 st Slurry	19. API Cement Used: No. of Sacks >			600			
	Class >			C			
	Additives >			REMARK1			
2 nd Slurry	No. of Sacks >			200			
	Class >			C			
	Additives >			REMARK2			
3 rd Slurry	No. of Sacks >						
	Class >						
	Additives >						
1st	20. Slurry Pumped: Volume (cu.ft.) >			1470			
	Height (ft) >			8485			
2nd	Volume (cu.ft.) >			258			
	Height (ft) >			1489			
3rd	Volume (cu.ft.) >						
	Height (ft) >						
	Volume (cu.ft.) >			1728			
	Height (ft) >			9974			
21. Was Cement Circulated to Ground Surface (or Bottom of Casing) Outside Casing?				YES			
22. Remarks 1 10% Gel + 3#/sk Kolseal + 1/4#/sk Celloflake + 5% Salt 2 2% Gel + 5% Salt							

OVER →

42-003-44021

CEMENTING TO PLUG AND ABANDON	PLUG #1	PLUG #2	PLUG #3	PLUG #4	PLUG #5	PLUG #6	PLUG #7	PLUG #8
23. Cementing Date								
24. Size of Hole or Pipe Plugged (in)								
25. Depth to Bottom of Tubing or Drill Pipe (ft)								
26. Sacks of Cement Used (each plug)								
27. Slurry Volume Pumped (cu.ft.)								
28. Calculated Top of Plug (ft)								
29. Measured Top of Plug, If Tagged (ft)								
30. Slurry Wt. (lbs/gal)								
31. Type Cement								

CEMENTERS CERTIFICATE: I declare under penalties prescribed in Sec. 91.143, Texas Natural Resources Code, that I am authorized to make this certification, that the cementing of casing and/or the placing of cement plugs in this well as shown in the report was performed by me or under my supervision, and that the cementing data and facts presented on both sides of this form are true, correct, and complete, to the best of my knowledge. This certification covers cementing data only.

LUIS RIOS / SERVICE SUPERVISOR
Name and Title of Cementer's Representative

O-TEX PUMPING SERVICES
Cementing Company

7-26
Signature

2611 East I-20

Midland, Texas 79706

432-686-8559

8/19/2012

Address City State Zip Code

Tel: Area Code Number

Date: Mo. Day Yr.

OPERATOR'S CERTIFICATE: I declare under penalties prescribed in Sec. 91.143, Texas Natural Resources Code, that I am authorized to make this certification, that I have knowledge of the well data and information presented in this report, and that data and facts presented on both sides of this form are true, correct, and complete, to the best of my knowledge. This certification covers all well data.

Cesar Carrasco
Typed or Printed Name of Operators Representative

CEO
Title

Cesar Carrasco
Signature

123 Robert S Kerr Ave Oklahoma City, OK 73102
Address City State Zip Code

405-429-6414
Tel: Area Code Number

10/1/12
Date: Mo. Day Yr.

Instruction to Form W-15, Cementing Report

IMPORTANT: Operators and cementing companies must comply with the requirements of the Commission's Statewide rules 8 (Water Protection), 13 (Casing, Cementing, Drilling, and Completion, and 14 (Well Plugging). For offshore operations, see the requirements of Rule 13 (c).

A. What to file. An operator should file an original and one copy of the completed Form W-15 for each cementing company used on a well. The cementing of different casing strings on a well by one cementing company may be reported on one form. Form W-15 should be filed with the following:

- * An initial oil or gas completion report, **Form W-2 or G-1**, as required by Statewide or special field rules;
- * Form W-4, Application for Multiple Completion, if the well is a multiple parallel casing completion; and
- * Form W-3, Plugging Record, unless the W-3 is signed by the cementing company representative. When reporting dry holes, operators must complete W-15, in addition to Form W-3, to show any casing cemented in the hole.

B. Where to file. The appropriate Commission District Office for the county in which the well is located.

C. Surface casing. An operator must set and cement sufficient surface casing to protect all usable-quality water strata, as defined by the Texas Department of Water Resources, Austin. Before drilling a well in any field or area in which no field rules are in effect or in which surface casing requirements are not specified in the applicable rules, an operator must obtain a letter from the Department of Water Resources stating the protection depth. Surface casing should not be set deeper than 200 feet below the specified depth without prior approval from the Commission.

D. Centralizers. Surface casing must be centralized at the shoe, above and below a stage collar or diverting tool, if run, and through usable-quality water zones. In nondeviated holes, a centralizer must be placed every fourth joint from the cement shoe to the ground surface or to the bottom of the cellar. All centralizers must meet API specifications.

E. Exceptions and alternative casing programs. The District Director may grant an exception to the requirements of Statewide Rule 13. In a written application, an operator must state the reason for the requested exception and outline an alternate program for casing and cementing through the protection depth for strata containing usable-quality water. The District Director may approve, modify, or reject a proposed program. An operator must obtain approval of any exception before beginning casing and cementing operations.

F. Intermediate and production casing. For specific technical requirements, operators should consult Statewide Rule 12 (b) (3) and (4).

G. Plugging and abandoning. Cement plugs must be placed in the wellbore as required by Statewide Rule 14. The District Director may require additional cement plugs. For onshore or inland wells, a 10-foot cement plug must be placed in the top of the well, and the casing must be cut off three feet below the ground surface. All cement plugs, except the top plug, must have sufficient slurry volume to fill 100 feet of hole, plus ten percent for each 1000 feet of depth from the ground surface to the bottom of the plug.

To plug and abandon a well, operators must use only cementers approved by the Director of Field Operations. Cementing companies, service companies, or operators can qualify as approved cementers by demonstrating that they are able to mix and pump cement in compliance with Commission rules and regulations.

RAILROAD COMMISSION OF TEXAS
OIL AND GAS DIVISION

Form W-12
(1-1-71)
FOD1296


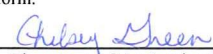
INCLINATION REPORT (One Copy Must Be Filed With Each Completion Report)		6. RRC District <div style="text-align: center;">08</div>
1. FIELD NAME (as per RRC Records or Wildcat) <div style="text-align: center;">Fuhrman - Maschu</div>		7. RRC Lease Number. (Oil completions only) <div style="text-align: center;">21365</div>
2. LEASE NAME <div style="text-align: center;">South Fuhrman Macho Unit</div>		8. Well Number <div style="text-align: center;">5120</div>
3. OPERATOR SandRidge Exploration & Production, LLC		9. RRC Identification Number (Gas completions only)
4. ADDRESS 123 Robert S Kerr Ave. Oklahoma City, OK 73102		
5. LOCATION (Section, Block, and Survey) <div style="text-align: center;">Sec. 5; Blk. 10; UL</div>		10. County <div style="text-align: center;">Andrews</div>

RECORD OF INCLINATION

*11. Measured Depth (feet)	12. Course Length (Hundreds of feet)	*13. Angle of Inclination (Degrees)	14. Displacement per Hundred Feet (Sine of Angle x100)	15. Course Displacement (feet)	16. Accumulative Displacement (feet)
228	2.28	0.25	0.44	1.00	1.00
706	4.78	0.50	0.88	4.18	5.18
1201	4.95	0.25	0.44	2.17	7.35
1665	4.64	0.50	0.88	4.06	11.41
2160	4.95	0.75	1.31	6.50	17.90
2656	4.96	2.00	3.50	17.36	35.26
3149	4.93	1.50	2.63	12.94	48.20
3646	4.97	1.50	2.63	13.05	61.25
4142	4.96	1.25	2.19	10.85	72.10
4637	4.95	1.00	1.75	8.66	80.76
4755	1.18	1.00	1.75	2.07	82.83

If additional space is needed, use the reverse side of this form.

17. Is any information shown on the reverse side of this form? ☐ yes ☒ no
18. Accumulative total displacement of well bore at total depth of 4755 feet = 82.83 feet.
- *19. Inclination measurements were made in - ☐ Tubing ☐ Casing ☐ Open hole ☒ Drill Pipe
20. Distance from surface location of well to the nearest lease line..... 899 feet.
21. Minimum distance to lease line as prescribed by field rules 330 feet.
22. Was the subject well at any time intentionally deviated from the vertical in any manner whatsoever? No
- (If the answer to the above question is "yes," attach written explanation of the circumstances.)

<p>INCLINATION DATA CERTIFICATION</p> <p>I declare under penalties prescribed in Sec. 91.143, Texas Natural Resources Code, that I am authorized to make this certification, that I have personal knowledge of the inclination data and facts placed on both sides of this form and that such data and facts are true, correct, and complete to the best of my knowledge. This certification covers all data as indicated by asterisks (*) by the item numbers on this form.</p> <div style="text-align: center;">  </div> <p>Signature of Authorized Representative Archie Brown - General Manager Name of Person and Title (type or print) CapStar Drilling, Inc. Name of Company Telephone: 432/366-0161</p>	<p>OPERATOR CERTIFICATION</p> <p>I declare under penalties prescribed in Sec. 91.143, Texas Natural Resources Code, that I am authorized to make this certification, that I have personal knowledge of all information presented in this report, and that all data presented on both sides of this form are true, correct, and complete to the best of my knowledge. This certification covers all data and information presented herein except inclination data as indicated by asterisks (*) by the item numbers on this form.</p> <div style="text-align: center;">  </div> <p>Signature of Authorized Representative Chelsy Green Regulatory Technician Name of Person and Title (type or print) SandRidge Expl & Prod, LLC Operator Telephone: 405-429-6414</p>
---	---

Railroad Commission Use Only:

Approved By: _____ Title: _____ Date: _____

* Designates items certified by company that conducted the inclination surveys.

RAILROAD COMMISSION OF TEXAS

Oil and Gas Division

ELECTRIC LOG
STATUS REPORT

FORM L-1

Tracking No.: 59460

This facsimile L-1 was generated electronically from data submitted to the RRC.

Instructions

When to File Form L-1:

- with Forms G-1, W-2, and GT-1 for new and deepened gas, oil, and geothermal wells
- with Form W-3 for plugged dry holes
- when sending in a log which was held under a request for confidentiality and the period for confidentiality has not yet expired.

When is Form L-1 NOT required:

- with Forms W-2, G-1, and GT-1 filed for injection wells, disposal wells, water supply wells, service wells, re-test wells, re-classifications, and plugbacks of oil, gas or geothermal wells
- with Form W-3 for plugging of other than a dry hole

Where to File Form L-1:

- with the appropriate Commission district office

Filling out Form L-1:

- Section I and the signature section must be filled out for all wells
- complete only the appropriate part of Section II

Type of log required:

- any wireline survey run for the purpose of obtaining lithology, porosity, or resistivity information
- no more than one such log is required but it must be of the subject well
- if such log is NOT run on the subject well, do NOT substitute any other type of log; just select Section II, Part A below

SECTION I. IDENTIFICATION

Operator Name: SANDRIDGE EXPL. AND PROD., LLC	District No. 08	Completion Date: 09/13/2012
Field Name FUHRMAN-MASCHO	Drilling Permit No. 745329	
Lease Name SOUTH FUHRMAN MASCHO UNIT	Lease/ID No. 21365	Well No. 5120
County ANDREWS	API No. 42- 003-44621	

SECTION II. LOG STATUS (Complete either A or B)

☐ A. BASIC ELECTRIC LOG NOT RUN

☒ B. BASIC ELECTRIC LOG RUN. (Select one)

- ☒ 1. Confidentiality is requested and a copy of the header for each log that has been run on the well is attached.
- ☐ 2. Confidentiality already granted on basic electric log covering this interval (applicable to deepened wells only).
- ☐ 3. Basic electric log covering this interval already on file with Commission (applicable to deepened wells only).
- ☐ 4. Log attached to (select one):
- ☐ (a) Form L-1 (this form). If the company/lease name on log is different from that shown in Section I, please enter name on log here: _____
- Check here if attached log is being submitted after being held confidential. ☐
- ☐ (b) Form P-7, Application for Discovery Allowable and New Field Designation.
- ☐ (c) Form W-4, Application for Multiple Completion:
- Lease or ID No(s). _____
- Well No(s). _____

Chelsey Green

Signature

SANDRIDGE EXPL. AND PROD., LLC

Name (print)

Regulatory Technician

Title

(405) 429-6414

Phone

11/12/2012

Date

-FOR RAILROAD COMMISSION USE ONLY-



COMPENSATED NEUTRON
GAMMA RAY/CCL
LOG

COMPANY SANDRIDGE	WELL SFMU #5120	FIELD FUHRMAN MASCHO	CNTY ANDREWS	STATE TX	COMPANY SANDRIDGE		
					WELL SFMU #5120		
					FIELD FUHRMAN MASCHO		
					COUNTY ANDREWS		
					STATE TEXAS		
					LOCATION:		
					1400' FWL & B330' FSL		
					SEC.5, BLK.10, UL		
					SEC.N/A TWP.N/A RGEN/A		
					OTHER SERVICES:		
					CRANE		
					API:		
					42-003-44621		
					PERM. DATUM GROUND LEVEL ELEV. 3250'		
					LOG MEASURED FROM KB 11 FT. ABOVE PERMANENT DATUM		
					DRILLING MEASURED FROM KELLY BUSHING		
					ELEV.:K.B. 3261'		
					D.F. 3260'		
					G.L. 3250'		
DATE					AUG-20-12		
RUN NO.					ONE		
DEPTH DRILLER					N/A		
DEPTH LOGGER					4719'		
BTM. LOG INTERVAL					4719'		
TOP LOG INTERVAL					2500'		
OPEN HOLE SIZE					7.875		
TYPE FLUID					WATER		
DENS. VISC.					N/A N/A		
MAX. REC. TEMP. °F					N/A		
EST. CEMENT TOP					N/A		
TIME WELL READY					ON ARRIVAL		
TIME LOGGER ON BTM.					SEE LOG		
EQUIP. NO.					14163		
LOCATION					HOBBS, NM		
RECORDED BY					M.MCGAHA		
WITNESSED BY					DARRELL TROTTER		
BOREHOLE RECORD					TUBING RECORD		
RUN NO.	BIT	FROM	TO	SIZE	WGT.	FROM	TO
CASING RECORD		SIZE	WT/FT	GRADE	TYPE JOINT	TOP	BOTTOM
SURFACE STRING		8.625	24	J-55		SURF.	N/A
PROD. STRING							
PROD. STRING		5.5	15.5	J-55		SURF.	T.D.
LINER							

Service Order # 196256

Rig: CRANE

REMARKS

Groundwater
Advisory Unit

Date July 24, 2012

GAU File No.: SC- 15330

***** EXPEDITED APPLICATION *****

API Number 00300000

Attention: BARBARA LESTER

RRC Lease No. 000000

SC_748011_00300000_000000_15330.pdf

SANDRIDGE E&P LLC 123 ROBERT S KERR OKLAHOMA CITY OK 73102	--Measured--	Digital Map Location:	
	1510 ft FWL	X-coord/Long	<u>661060</u>
	830 ft FNL	Y-coord/Lat	<u>6779943</u>
	MRL:SECTION	Datum	<u>27</u> Zone <u>NC</u>
P-5# 748011			

County ANDREWS Lease & Well No. UNIVERSITY 5 #6&ALL Purpose ND

Location SUR-UL,BLK-10,SEC-5,--[TD=5200],[RRC 8],

To protect usable-quality groundwater at this location, the Groundwater Advisory Unit of the Texas Railroad Commission recommends:

The interval from the land surface to a depth of 250 feet and the ZONE from 1150 feet to 1550 feet must be protected.

This recommendation is applicable to all wells drilled in this LEASE IN SECTION 5.

Note: Unless stated otherwise, this recommendation is intended to apply only to the subject well and not for area wide use. This recommendation is intended for normal drilling, production, and plugging operations only. It does not apply to saltwater disposal operation into a nonproductive zone (RRC Form W-14).

If you have any questions, please contact us at 512-463-2741, gau@rrc.state.tx.us, or by mail.

Sincerely,

George Dunfield

Digitally signed by George Dunfield
DN: c=US, st=TEXAS, o=Austin, ou=Railroad
Commission of Texas, cn=George
Dunfield,
email=george.dunfield@rrc.state.tx.us
Date: 2012.07.24 13:20:41 -05'00'

GEOLOGIST SEAL



George Dunfield, P.G.

Geologist, Groundwater Advisory Unit
Oil & Gas Division

The seal appearing on this document was authorized by George Dunfield on 7/24/2012
Note: Alteration of this electronic document will invalidate the digital signature.

0051R Transition Form
Rev. 3/1/2011

P.O. Box 12967

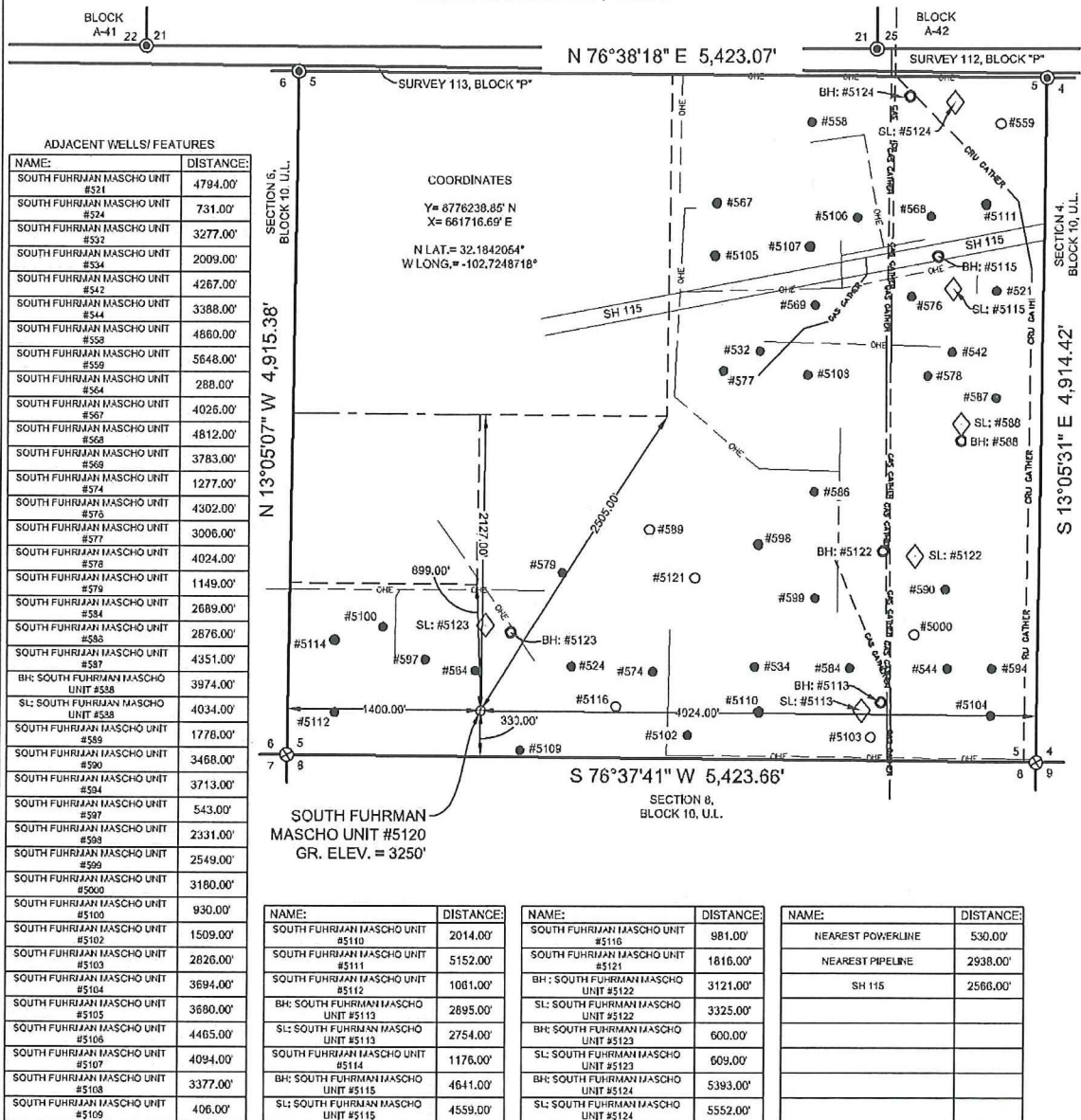
Austin, Texas 78711-2967

512-463-2741

Internet address: www.rrc.state.tx.us

SECTION 5, BLOCK 10, U.L. ANDREWS COUNTY, TEXAS

NOTE: NOT A POOLED UNIT LEASE.



NOTES:

- THIS LOCATION IS APPROXIMATELY 8.0 MILES WEST/SOUTHWEST OF ANDREWS, TEXAS.
- SEE DOCUMENTS FILED FOR RECORD IN THIS OFFICE, WHICH DESCRIBE THE RECONSTRUCTION OF THIS SECTION.
- BEARINGS, DISTANCES AND COORDINATES ARE RELATIVE TO THE LAMBERT CONICAL PROJECTION OF TEXAS STATE PLANE COORDINATE SYSTEM, NORTH CENTRAL ZONE, 1983 NORTH AMERICAN DATUM.
- LEASE = TRACTS WITHIN UNIT LEASE - SFMU=1600 ± ACRES
TRACT 1 - NE1/4 OF SECTION 5
TRACT 2 - SE1/4 OF SECTION 5
TRACT 3 - S1/2 OF SW1/4 NE1/4 OF SW1/4 OF SECTION 5
TRACT 4 - N1/2 OF NW1/4, SE1/4 OF NW1/4 OF SECTION 8
TRACT 5 - NE1/4 OF SECTION 8
TRACT 6 - SE1/4, NE1/4 OF THE SW1/4 OF SECTION 8
TRACT 7 - SW1/4, S1/2 OF SE1/4 SECTION 9
TRACT 8 - NE1/4 OF SECTION 10
TRACT 9 - NW1/4 OF SECTION 16
TRACT 10 - N1/4
TRACT 11 - NW1/4 OF NE1/4 OF SECTION 17
TRACT 12 - N1/2 OF SW1/4 OF SECTION 15
NOT IN UNIT - S1/2 OF SW1/4 OF SECTION 15
- NAMES TAKEN FROM FIELD SIGNAGE.



Gregory W. Shoults, RPLS, No. 5356

July 19, 2012



West Texas Consultants, Inc.
ENGINEERS PLANNERS SURVEYORS
405 S.W. 1st STREET
ANDREWS, TEXAS 79714
(432) 533-2181
TEXAS REGISTERED ENGINEERING FIRM F-2746
TEXAS REGISTERED SURVEYOR FIRM #100792-00

SandRidge

SandRidge Exploration And Production, LLC

SOUTH FUHRMAN MASCHO UNIT #5120
LOCATED 330 FEET FROM THE SOUTH LINE AND 1,400 FEET
FROM THE WEST LINE OF SECTION 5, BLOCK 10, U.L.,
ANDREWS COUNTY, TEXAS.

SURVEY DATE: 07/16/2012 JOB No.: WTC48614 DRAWN BY: J.J.G. SHEET 1 OF 3