

121578

RAILROAD COMMISSION OF TEXAS

Tracking No.: 50953

Oil and Gas Division

Status: Submitted

This facsimile W-2 was generated electronically
from data submitted to the RRC.

API No. 42- 003-44232

7. RRC District No.
088. RRC Lease No.
30243

Oil Well Potential Test, Completion or Recompletion Report, and Log

1. FIELD NAME (as per RRC Records or Wildcat) FUHRMAN-MASCHO		2. LEASE NAME UNIVERSITY 6N		9. Well No. 15	
3. OPERATOR'S NAME (Exactly as shown on Form P-5, Organization Report) SANDRIDGE EXPL. AND PROD., LLC		RRC Operator No. 748011		10. County of well site ANDREWS	
4. ADDRESS 123 ROBERT S KERR AVE OKLAHOMA CITY, OK 73102-6406				11. Purpose of filing Initial Potential <input checked="" type="checkbox"/> Retest <input type="checkbox"/> Reclass <input type="checkbox"/> Well record only (Explain in remarks) <input type="checkbox"/>	
5. If Operator has changed within last 60 days, name former operator					
6a. Location (Section, Block, and Survey) 6, 10, UL		6b. Distance and direction to nearest town in this county. 18 MILES SW FROM ANDREWS			
12. If workover or reclass, give former field (with reservoir) & Gas ID or oil lease no. FIELD & RESERVOIR N/A		GAS ID or OIL LEASE #		Oil-0 Gas-G	
				Well #	
13. Type of electric or other log run COMP. NEUTRON		14. Completion or recompletion date 07/01/2012			

SECTION I- POTENTIAL TEST DATA IMPORTANT: Test should be for 24 hours unless otherwise specified infield rules.

15. Date of test 07/08/2012		16. No. of hours tested 24		17. Production method (Flowing, Gas Lift, Jetting, Pumping- Size & Type of pump) Pumping		18. Choke size	
19. Production during Test Period ▶ Oil - BBLS 75.0		4 Gas - MCF		Water - BBLS 63		Gas - Oil Ratio 53	
20. Calculated 24-Hour Rate ▶ Oil - BBLS 75.0		4 Gas - MCF		Water - BBLS 63		Oil Gravity-API-60° 32.0	
21. Was swab used during this test? Yes <input type="checkbox"/> No <input checked="" type="checkbox"/>		22. Oil produced prior to test (New & Reworked wells) 0.0				23. Injection Gas-Oil Ratio 0.0	
REMARKS: N/A							

INSTRUCTIONS: File an original and one copy of the completed Form W-2 in the appropriate RRC District Office within 30 days after completing a well and within 10 days after a potential test. If an operator does not properly report the results of a potential test within the 10-day period, the effective date of the allowable assigned to the well will not extend back more than 10 days before the W-2 was received in the District Office. (Statewide Rules 16 and 51) To report a completion or recompletion, fill in both sides of this form. To report a retest, fill in only the front side.

WELL TESTERS CERTIFICATION

I declare under penalties prescribed in Sec. 91.143, Texas Natural Resources Code, that I conducted or supervised this test by observation of (a) meter readings or (b) the top and bottom gauges of each tank into which production was run during the test. I further certify that the potential test data shown above is true, correct, and complete, to the best of my knowledge.

Signature: Well Tester

Name of Company

RRC Representative

OPERATOR'S CERTIFICATION

I declare under penalties prescribed in Sec. 91.143, Texas Natural Resources Code, that I am authorized to make this report, that this report was prepared by me or under my supervision and direction, and that data and facts stated therein are true, correct and complete, to the best of my knowledge.

SANDRIDGE EXPL. AND PROD., LLC

Type or printed name of operator's representative

(405) 429-6205

08/06/2012

Telephone: Area Code

Number

Month Day Year

Regulatory Analyst

Title of Person

Brooke Milford

Signature

SECTION III DATA ON WELL COMPLETION AND LOG (Not Required on Retest)									
24. Type of Completion New Well <input checked="" type="checkbox"/> Deepening <input type="checkbox"/> Plug Back <input type="checkbox"/> Other <input type="checkbox"/>					25. Permit to Drill, Plug Back or Deepen DATE 04/26/2012 PERMIT NO. 738240 Rule 37 Exception CASE NO. 0275902 Water Injection Permit PERMIT NO. Salt Water Disposal Permit PERMIT NO. Other PERMIT NO.				
26. Notice of Intention to Drill this well was filed in Name of SANDRIDGE EXPL. AND PROD., LLC									
27. Number of producing wells on this lease in this field (reservoir) including this well 11			28. Total number of acres in this lease 240.0						
29. Date Plug Back, Deepening, Workover or Drilling Operations: 05/29/2012		Commenced 06/03/2012		Completed 403.0		30. Distance to nearest well, Same Lease & Reservoir			
31. Location of well, relative to nearest lease boundaries 270.0 Feet From East Line and 1630.0 Feet from North Line of the UNIVERSITY 6N Lease									
32. Elevation (DF, RKB, RT, GR ETC.) 32586 GL				33. Was directional survey made other than inclination (Form W-12)? <input type="checkbox"/> Yes <input checked="" type="checkbox"/> No					
34. Top of Pay 4444		35. Total Depth 4800		36. P. B. Depth 4772		37. Surface Casing Determined by Field Rules <input type="checkbox"/> Recommendation of T.D.W.R. <input checked="" type="checkbox"/> Railroad Commission (Special) <input type="checkbox"/>		Dt. of Letter 10/13/2010 Dt. of Letter	
38. Is well multiple completion? <input type="checkbox"/> Yes <input checked="" type="checkbox"/> No									
39. If multiple completion, list all reservoir names (completions in this well) and Oil Lease or Gas ID No. FIELD & RESERVOIR N/A					GAS ID or OIL LEASE #		Oil-G Gas-G		Well #
40. Intervals Drilled by: Rotary Tools <input checked="" type="checkbox"/> Cable Tools		41. Name of Drilling Contractor CAPSTAR DRILLING					42. Is Cementing Affidavit Attached? <input checked="" type="checkbox"/> Yes <input type="checkbox"/> No		
43. CASING RECORD (Report All Strings Set in Well)									
CASING SIZE	WT #/FT.	DEPTH SET	MULTISTAGE TOOL DEPTH	TYPE & AMOUNT CEMENT (sacks)	HOLE SIZE	TOP OF CEMENT	SLURRY VOL. cu. ft.		
8 5/8	24.0	1517		C 700	12 1/4	SURF	1260.0		
5 1/2	15.5	4800		C 700	7 7/8	SURF	1601.0		
44. LINER RECORD									
Size		Top		Bottom		Sacks Cement		Screen	
N/A									
45. TUBING RECORD									
Size		Depth Set		Packer Set		From 4444		To 4606	
2 7/8		4650				From		To	
						From		To	
						From		To	
46. Producing Interval (this completion) Indicate depth of perforation or open hole									
47. ACID, SHOT, FRACTURE, CEMENT SQUEEZE, ETC.									
Depth Interval				Amount and Kind of Material Used					
4444.0		4606.0		145000# TOTAL PROP.; 1589 BBLS TOTAL FLUID; 48 BBLS 7.5% NEFE ACID.					
48. FORMATION RECORD (LIST DEPTHS OF PRINCIPAL GEOLOGICAL MARKERS AND FORMATION TOPS)									
Formations		Depth		Formations		Depth			
LOWER GRAYBURG		4391.0							
FUHRMAN SAND		4442.0							
SAN ANDRES		4456.0							
REMARKS: BMILFORD@SANDRIDGEENERGY.COM									

Cementer: Fill in shaded areas.
Operator: Fill in other items.

RAILROAD COMMISSION OF TEXAS
Oil and Gas Division

Form W-15
Cementing Report
Rev. 4/1/83
483-045

1. Operator's Name (As shown on Form P-5, Organization Report) <i>SandRidge Expl. and Prod. LLC</i>	2. RRC Operator No. <i>748011</i>	3. RRC District No. <i>08</i>	4. County of Well Site <i>Andrews</i>
5. Field Name (Wildcat or exactly as shown on RRC Records) <i>Fuhrman Mascho</i>		6. API No. <i>42-003-44232</i>	7. Drilling Permit No. <i>138240</i>
8. Lease Name <i>University 6n</i>	9. Rule 37 Case No. <i>0275902</i>	10. Oil Lease/Gas ID No. <i>30243</i>	11. Well No. <i>15</i>

CASING CEMENTING DATA:			SURFACE CASING	INTER-MEDIATE CASING	PRODUCTION CASING		MULTI-STAGE CEMENTING PROCESS	
		Single String			Multiple Parallel Strings	Tool	Shoe	
12. Cementing Date			05.31.2012					
13. • Drilled Hole Size			12 1/4"					
• Est. % wash or hole enlargement								
14. Size of casing (in. O.D.)			8 5/8"					
15. Top of liner (ft.)								
16. Setting depth (ft.)			1517					
17. Number of centralizers used			10					
18. Hrs. Waiting on cement before drill-out			12+					
1 st Slurry	19. API cement used: No. of sacks ▶		500					
	Class ▶		"C"					
	Additives ▶		See Remarks					
2 nd Slurry	No. of sacks ▶		200					
	Class ▶		"C"					
	Additives ▶		See Remarks					
3 rd Slurry	No. of sacks ▶							
	Class ▶							
	Additives ▶							
1 st	20. Slurry pumped: Volume (cu. ft.) ▶		990.00					
	Height (ft.) ▶		2398.91					
2 nd	Volume (cu. ft.) ▶		270.00					
	Height (ft.) ▶		654.29					
3 rd	Volume (cu. ft.) ▶							
	Height (ft.) ▶							
Total	Volume (cu. ft.) ▶		1260.00					
	Height (ft.) ▶		3053.20					
21. Was cement circulated to ground surface (or bottom of cellar) outside casing ?			Yes					

(22). Remarks #1: Slurry Additives: 1/4#/sk CelloFlake, 2% TA-2, 2% CaCl2, .2% FLO-1
Remarks #2: Slurry Additives: 1% CaCl2, .2%FLO-1
Circ. 125sks (44bbbs) to Surf.

42.003. 44232

CEMENTING TO PLUG AND ABANDON	PLUG #1	PLUG #2	PLUG #3	PLUG #4	PLUG #5	PLUG #6	PLUG #7	PLUG #8
23. Cementing date								
24. Size of hole or pipe plugged (in.)								
25. Depth to bottom of tubing or drill pipe (ft.)								
26. Sacks of cement used (each plug)								
27. Slurry volume pumped (cu. ft.)								
28. Calculated top of plug (ft.)								
29. Measured top of plug, if tagged (ft.)								
30. Slurry wt. (lb/gal)								
31. Type cement								

CEMENTER'S CERTIFICATE: I declare under penalties in Sec. 91.143, Texas Natural Resources Code, that I am authorized to make this Certification, that the cementing of casing and/or the placing of cement plugs in this well as shown in the report was performed by me or under my Supervision, and that the cementing data and facts presented on both sides of this form are true, correct, and complete, to the best of my knowledge. This certification covers cementing data only.

Joseph Reeves Service Supervisor
Name and title of cementer's representative

TRICAN WELL SERVICES
Cementing Company

Signature

8200 E I-20

Odessa, TX 79765
City, State, Zip Code

(432) 258-0367

05.31.2012

Address Tel.: Area Code Number Date: mo. Day yr.

OPERATOR'S CERTIFICATE: I declare under penalties prescribed in Sec. 91.143, Texas Natural Resources Code, that I am authorized to make this Certification, that I have knowledge of the well data and information presented in this report, and that data and facts presented on both sides of this form

Are true, correct, and complete, to the best of my knowledge. This certification covers all well data.

Brooke Milford
Typed or printed name of operator's representative

Reg. Analyst
Title

Signature

123 Robert S. Ken Ave. OKC, OK 73102
Address City, State, Zip Code

(405) 429. 6205
Tel.: Area Code Number

8/1/12
Date: mo. day yr.

Instructions to Form W-15, Cementing Report

IMPORTANT: Operators and cementing companies must comply with the requirements of the Commission's Statewide Rules 8 (Water Protection), 13 (Casing, Cementing, Drilling, and Completion), and 14 (Well Plugging). For offshore operations, see the requirements of Rule 13 (c).

- A. What to file. An operator should file an original and one copy of the completed Form W-15 for each cementing company used on a well. The cementing of different casing strings on a well by one cementing company may be reported on one form. Form W-15 should be filed with the following.
 - An initial oil or gas completion report, Form W-2 or G-1, as required by Statewide or special field rates;
 - Form W-4, Application for Multiple Completion, if the well is a multiple parallel casing completion; and
 - Form W-3, Plugging Record, unless the W-3 is signed by the cementing company representative. When reporting dry holes, operators must complete Form W-15, in addition to Form W-3, to show any casing cemented in the hole.
- B. Where to file. The appropriate Commission District Office for the county in which the well is located.
- C. Surface Casing. An operator must set and cement sufficient surface casing to protect all usable-quality water strata, as defined by the Texas Department of Water Resources, Austin. Before drilling a well in any field or area in which no field rules are in effect or in which surface casing requirements are not specified in the applicable rules, an operator must obtain a letter from the Department of Water Resources stating the protection depth. Surface casing should not be set deeper than 200 feet below the specified depth without prior approval from the Committee.
- D. Centralizers. Surface Casing must be centralized at the shoe, above and below a stage collar or diverting tool, if run, and through usable-quality water zones. In Non-deviated holes, a centralizer must be placed every fourth joint from the cement shoe to the ground surface or to the bottom of the cellar. All centralizers must meet API specifications.
- E. Exceptions and alternative casing programs. The District Director may grant an exception to the requirements of Statewide Rule 13. In a written application, an operator must state the reason for the requested exception and outline an alternate program for casing and cementing through the protection depth for strata containing usable-quality water. The District Director may approve, modify, or reject a proposed program. An operator must obtain approval of any exception before beginning casing and cementing operations.
- F. Intermediate and production casing. For specific technical requirements, operators should consult Statewide Rule 13 (3) and (4).
- G. Plugging and abandoning. Cement plugs must be placed in the wellbore as required by Statewide Rule 14. The District Director may require additional cement plugs. For onshore or inland wells, a 10-foot cement plug must be placed in the top of the well, and the casing must be cut off three foot below the ground surface. All cement plugs, except the top plug, must have sufficient slurry volume to fill 100 feet of hole, plus ten percent for each 1,000 feet of depth from the ground surface to the bottom of the plug

To plug and abandon a well, operators must use only cementers approved by the Director of Field Operations, Cementing companies, service companies or operators can qualify as approved cementers by demonstrating that they are able to mix and pump cement in compliance with Commission rules and regulations.

Cementer: Fill in shaded areas.
Operator: Fill in other items.

RAILROAD COMMISSION OF TEXAS
Oil and Gas Division

Form W-15
Cementing Report
Rev. 4/1/83
483-045

1. Operator's Name (As shown on Form P-5, Organization Report) <i>SandRidge Expt. and Prod., LLC</i>	2. RRC Operator No. <i>748011</i>	3. RRC District No. <i>08</i>	4. County of Well Site <i>Andrews</i>
5. Field Name (Wildcat or exactly as shown on RRC Records) <i>Fuhrman Mascho</i>		6. API No. <i>42-003-44232</i>	7. Drilling Permit No. <i>738240</i>
8. Lease Name <i>University 6N</i>	9. Rule 37 Case No. <i>0275902</i>	10. Oil Lease/Gas ID No. <i>30243</i>	11. Well No. <i>15</i>

CASING CEMENTING DATA:		SURFACE CASING	INTER-MEDIATE CASING	PRODUCTION CASING		MULTI-STAGE CEMENTING PROCESS	
				Single String	Multiple Parallel Strings	Tool	Shoe
12. Cementing Date				6-3-2012			
13. • Drilled Hole Size				7 7/8			
• Est. % wash or hole enlargement							
14. Size of casing (in. O.D.)				5 1/2			
15. Top of liner (ft.)							
16. Setting depth (ft.)				4800			
17. Number of centralizers used				20			
18. Hrs. Waiting on cement before drill-out				12+			
1 st Slurry	19. API cement used: No. of sacks ▶			500			
	Class ▶			C			
	Additives ▶			Remarks #1			
2 nd Slurry	No. of sacks ▶			200			
	Class ▶			C			
	Additives ▶			Remarks #2			
3 rd Slurry	No. of sacks ▶						
	Class ▶						
	Additives ▶						
1 st	20. Slurry pumped: Volume (cu. ft.) ▶			1345			
	Height (ft.) ▶			3327			
2 nd	Volume (cu. ft.) ▶			255			
	Height (ft.) ▶			1473			
3 rd	Volume (cu. ft.) ▶						
	Height (ft.) ▶						
Total	Volume (cu. ft.) ▶			1601			
	Height (ft.) ▶			9242			
21. Was cement circulated to ground surface (or bottom of cellar) outside casing ?				YES			

(22). Remarks #1: C + 2% TA-2 + .2% FLO-1 + 2% CaCl₂ + .125 #/sk Cello Flake + 5% Gilsonite + 5% Salt
Remarks #2: C (50/50) + 5% Salt + .2% Flo-1
Circ. 5 Bbls Of Cement To Pit (11 Sks)

42.003-44232

CEMENTING TO PLUG AND ABANDON	PLUG #1	PLUG #2	PLUG #3	PLUG #4	PLUG #5	PLUG #6	PLUG #7	PLUG #8
23. Cementing date								
24. Size of hole or pipe plugged (in.)								
25. Depth to bottom of tubing or drill pipe (ft.)								
26. Sacks of cement used (each plug)								
27. Slurry volume pumped (cu. ft.)								
28. Calculated top of plug (ft.)								
29. Measured top of plug, if tagged (ft.)								
30. Slurry wt. (lb/gal)								
31. Type cement								

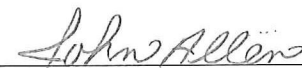
CEMENTER'S CERTIFICATE: I declare under penalties in Sec. 91.143, Texas Natural Resources Code, that I am authorized to make this Certification, that the cementing of casing and/or the placing of cement plugs in this well as shown in the report was performed by me or under my Supervision, and that the cementing data and facts presented on both sides of this form are true, correct, and complete, to the best of my knowledge. This certification covers cementing data only.

Service Supervisor—JOHN Allen

Name and title of cementer's representative

TRICAN WELL SERVICES

Cementing Company


 Signature

8200 E I-20

Address

Odessa,

City,

Texas

State,

79765

Zip Code

(432) 258-0367

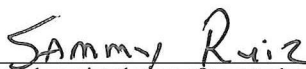
Tel: Area Code

Number


06-03-2012

Date: mo. day yr.

OPERATOR'S CERTIFICATE: I declare under penalties prescribed in Sec. 91.143, Texas Natural Resources Code, that I am authorized to make this Certification, that I have knowledge of the well data and information presented in this report, and that data and facts presented on both sides of this form Are true, correct, and complete, to the best of my knowledge. This certification covers all well data.


 Typed or printed name of operator's representative


 Title


 Signature

123 Robert S. Kun Ave. OKC, OK 73102

Address

City,

State,

Zip Code

(405) 429-6205

Tel.: Area Code

Number

6-3-12

Date: mo. day yr.

Instructions to Form W-15, Cementing Report

IMPORTANT: Operators and cementing companies must comply with the requirements of the Commission's Statewide Rules 8 (Water Protection), 13 (Casing, Cementing, Drilling, and Completion), and 14 (Well Plugging). For offshore operations, see the requirements of Rule 13 (c).

- A. What to file. An operator should file an original and one copy of the completed Form W-15 for each cementing company used on a well. The cementing of different casing strings on a well by one cementing company may be reported on one form. Form W-15 should be filed with the following.
- An initial oil or gas completion report, Form W-2 or G-1, as required by Statewide or special field rates;
 - Form W-4, Application for Multiple Completion, if the well is a multiple parallel casing completion; and
 - Form W-3, Plugging Record, unless the W-3 is signed by the cementing company representative. When reporting dry holes, operators must complete Form W-15, in addition to Form W-3, to show any casing cemented in the hole.
- B. Where to file. The appropriate Commission District Office for the county in which the well is located.
- C. Surface Casing. An operator must set and cement sufficient surface casing to protect all usable-quality water strata, as defined by the Texas Department of Water Resources, Austin. Before drilling a well in any field or area in which no field rules are in effect or in which surface casing requirements are not specified in the applicable rules, an operator must obtain a letter from the Department of Water Resources stating the protection depth. Surface casing should not be set deeper than 200 feet below the specified depth without prior approval from the Committee.
- D. Centralizers. Surface Casing must be centralized at the shoe, above and below a stage collar or diverting tool, if run, and through usable-quality water zones. In Non-deviated holes, a centralizer must be placed every fourth joint from the cement shoe to the ground surface or to the bottom of the cellar. All centralizers must meet API specifications.
- E. Exceptions and alternative casing programs. The District Director may grant an exception to the requirements of Statewide Rule 13. In a written application, an operator must state the reason for the requested exception and outline an alternate program for casing and cementing through the protection depth for strata containing usable-quality water. The District Director may approve, modify, or reject a proposed program. An operator must obtain approval of any exception before beginning casing and cementing operations.
- F. Intermediate and production casing. For specific technical requirements, operators should consult Statewide Rule 13 (3) and (4).
- G. Plugging and abandoning. Cement plugs must be placed in the wellbore as required by Statewide Rule 14. The District Director may require additional cement plugs. For onshore or inland wells, a 10-foot cement plug must be placed in the top of the well, and the casing must be cut off three foot below the ground surface. All cement plugs, except the top plug, must have sufficient slurry volume to fill 100 feet of hole, plus ten percent for each 1,000 feet of depth from the ground surface to the bottom of the plug.

To plug and abandon a well, operators must use only cementers approved by the Director of Field Operations, Cementing companies, service companies or operators can qualify as approved cementers by demonstrating that they are able to mix and pump cement in compliance with Commission rules and regulations.

RAILROAD COMMISSION OF TEXAS
OIL AND GAS DIVISIONForm W-12
(1-1-71)
FOD1296

42-003-44232

INCLINATION REPORT (One Copy Must Be Filed With Each Completion Report)		6. RRC District 08
1. FIELD NAME (as per RRC Records or Wildcat) Fuhrman-Mascho	2. LEASE NAME University 6N	7. RRC Lease Number. (Oil completions only) 30243
3. OPERATOR SandRidge Exploration & Production, LLC		8. Well Number 15
4. ADDRESS 123 Robert S Kerr Ave. Oklahoma City, OK 73102		9. RRC Identification Number (Gas completions only)
5. LOCATION (Section, Block, and Survey) Sec. 6 Blk. 10, W		10. County Andrews

RECORD OF INCLINATION

*11. Measured Depth (feet)	12. Course Length (Hundreds of feet)	*13. Angle of Inclination (Degrees)	14. Displacement per Hundred Feet (Sine of Angle x 100)	15. Course Displacement (feet)	16. Accumulative Displacement (feet)
219	2.19	0.25	0.44	0.96	0.96
662	4.43	0.25	0.44	1.94	2.90
1137	4.75	0.50	0.88	4.16	7.05
1627	4.90	0.25	0.44	2.14	9.20
2068	4.41	0.25	0.44	1.93	11.13
2541	4.73	0.75	1.31	6.21	17.33
3016	4.75	0.75	1.31	6.23	23.57
3488	4.72	0.75	1.31	6.20	29.76
3963	4.75	1.25	2.19	10.39	40.15
4437	4.74	1.00	1.75	8.30	48.45
4800	3.63	1.00	1.75	6.35	54.80

If additional space is needed, use the reverse side of this form.

17. Is any information shown on the reverse side of this form? ☐ yes ☒ no18. Accumulative total displacement of well bore at total depth of 4800 feet = 54.80 feet.*19. Inclination measurements were made in - ☐ Tubing ☐ Casing ☐ Open hole ☒ Drill Pipe20. Distance from surface location of well to the nearest lease line 270 feet.21. Minimum distance to lease line as prescribed by field rules 330 feet.22. Was the subject well at any time intentionally deviated from the vertical in any manner whatsoever? No

(If the answer to the above question is "yes," attach written explanation of the circumstances.)

INCLINATION DATA CERTIFICATION

I declare under penalties prescribed in Sec. 91.143, Texas Natural Resources Code, that I am authorized to make this certification, that I have personal knowledge of the inclination data and facts placed on both sides of this form and that such data and facts are true, correct, and complete to the best of my knowledge. This certification covers all data as indicated by asterisks (*) by the item numbers on this form.

Signature of Authorized Representative

Archie Brown - General Manager

Name of Person and Title (type or print)

CapStar Drilling, Inc.

Name of Company

Telephone: 432/366-0161

OPERATOR CERTIFICATION

I declare under penalties prescribed in Sec. 91.143, Texas Natural Resources Code, that I am authorized to make this certification, that I have personal knowledge of all information presented in this report, and that all data presented on both sides of this form are true, correct, and complete to the best of my knowledge. This certification covers all data and information presented herein except inclination data as indicated by asterisks (*) by the item numbers on this form.

Signature of Authorized Representative

BACH GREEN Reg. Technician

Name of Person and Title (type or print)

SandRidge Exp. + Prod.

Operator

Telephone: 405-429-5658

Railroad Commission Use Only:

Approved By: _____ Title: _____ Date: _____

* Designates items certified by company that conducted the inclination surveys.

RAILROAD COMMISSION OF TEXAS
Oil and Gas Division

ELECTRIC LOG
STATUS REPORT

FORM L-1

Tracking No.: 50953

This facsimile L-1 was generated electronically from data submitted to the RRC.

Instructions

When to File Form L-1:

- with Forms G-1, W-2, and GT-1 for new and deepened gas, oil, and geothermal wells
- with Form W-3 for plugged dry holes
- when sending in a log which was held under a request for confidentiality and the period for confidentiality has not yet expired.

When is Form L-1 NOT required:

- with Forms W-2, G-1, and GT-1 filed for injection wells, disposal wells, water supply wells, service wells, re-test wells, re-classifications, and plugbacks of oil, gas or geothermal wells
- with Form W-3 for plugging of other than a dry hole

Where to File Form L-1:

- with the appropriate Commission district office

Filling out Form L-1:

- Section I and the signature section must be filled out for all wells
- complete only the appropriate part of Section II

Type of log required:

- any wireline survey run for the purpose of obtaining lithology, porosity, or resistivity information
- no more than one such log is required but it must be of the subject well
- if such log is NOT run on the subject well, do NOT substitute any other type of log; just select Section II, Part A below

SECTION I. IDENTIFICATION

Operator Name: SANDRIDGE EXPL. AND PROD., LLC	District No. 08	Completion Date: 07/01/2012
Field Name FUHRMAN-MASCHO	Drilling Permit No. 738240	
Lease Name UNIVERSITY 6N	Lease/ID No. 30243	Well No. 15
County ANDREWS	API No. 42- 003-44232	

SECTION II. LOG STATUS (Complete either A or B)

☐ A. BASIC ELECTRIC LOG NOT RUN

☒ B. BASIC ELECTRIC LOG RUN. (Select one)

- ☒ 1. Confidentiality is requested and a copy of the header for each log that has been run on the well is attached.
- ☐ 2. Confidentiality already granted on basic electric log covering this interval (applicable to deepened wells only).
- ☐ 3. Basic electric log covering this interval already on file with Commission (applicable to deepened wells only).
- ☐ 4. Log attached to (select one):

☐ (a) Form L-1 (this form). If the company/lease name on log is different from that shown in Section I, please enter name on log here: _____

Check here if attached log is being submitted after being held confidential. ☐

☐ (b) Form P-7, Application for Discovery Allowable and New Field Designation.

☐ (c) Form W-4, Application for Multiple Completion:

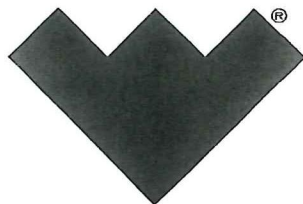
Lease or ID No(s). _____

Well No(s). _____

Brooke Milford
Signature
SANDRIDGE EXPL. AND PROD., LLC
Name (print)

Regulatory Analyst
Title
(405) 429-6205
Phone
08/06/2012
Date

-FOR RAILROAD COMMISSION USE ONLY-



**COMPENSATED NEUTRON
GAMMA RAY/CCL
LOG**

COMPANY SANDRIDGE WELL UNIVERSITY 6N #15 FIELD FUHRMAN MASCHO CNTY ANDREWS STATE TX	COMPANY SANDRIDGE	
	WELL UNIVERSITY 6N #15	
	FIELD FUHRMAN MASCHO	
	COUNTY ANDREWS STATE TEXAS	
LOCATION: 270' FEL & 1630' FNL SEC.6, BLK.10, UL SEC.N/A TWP.N/A RGEN/A		OTHER SERVICES: CRANE API: 42-003-44232
PERM. DATUM GROUND LEVEL ELEV. 3258' LOG MEASURED FROM KB 11 FT. ABOVE PERMANENT DATUM DRILLING MEASURED FROM KELLY BUSHING		ELEV.: K.B. 3269' D.F. 3268' G.L. 3258'
DATE	JUN-5-12	
RUN NO.	ONE	
DEPTH DRILLER	N/A	
DEPTH LOGGER	4772'	
BTM. LOG INTERVAL	4772'	
TOP LOG INTERVAL	2500'	
OPEN HOLE SIZE	7.875	
TYPE FLUID	WATER	
DENS.	VISC.	N/A N/A
MAX. REC. TEMP. °F	N/A	
EST. CEMENT TOP	N/A	
TIME WELL READY	ON ARRIVAL	
TIME LOGGER ON BTM.	SEE LOG	
EQUIP. NO.	14163	
LOCATION	HOBBS, NM	
RECORDED BY	M. MCGAHA	
WITNESSED BY	BO ELDRIDGE	
BOREHOLE RECORD		
RUN NO.	BIT	FROM TO
TUBING RECORD		
	SIZE	WGT.
CASING RECORD		
SIZE	WT/FT	GRADE
TYPE JOINT	TOP	BOTTOM
SURFACE STRING	8.625	24 J-55
PROT. STRING		
PROD. STRING	5.5	15.5 J-55
LINER		

 COMPENSATED NEUTRON
GAMMA RAY/CCL
LOG

R-101 CRANE

REMARKS



Texas Commission
on Environmental Quality
Surface Casing Program

DEPTH OF USABLE-QUALITY GROUND WATER TO BE PROTECTED

Date **October 13, 2010**

TCEQ File No.: SC- **13865**

***** EXPEDITED APPLICATION *****

API Number **00300000**

Attention: **TERRI STATHEM**

RRC Lease No. **000000**

SC_748011_00300000_000000_13865.pdf

SANDRIDGE E&P LLC
123 ROBERT S KERR
OKLAHOMA CITY OK 73102

--Measured--

1000 ft FEL

338 ft FNL

MRL:SECTION

Digital Map Location:

X-coord/Long **658421**

Y-coord/Lat **6779834**

Datum **83** Zone **NC**

P-5# 748011

County **ANDREWS**

Lease & Well No. **UNIVERSITY 6N #136ALL**

Purpose **ND**

Location **SUR-UL,BLK-10,SEC-6,--[TD=12000],[RRC 8],**

To protect usable-quality ground water at this location, the Texas Commission on Environmental Quality recommends:

The interval from the land surface to a depth of 250 feet
and the ZONE from 1050 feet to 1400 feet must be protected.

This recommendation is applicable to all wells drilled in this section 6.

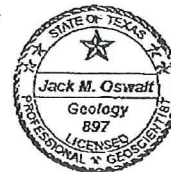
Note: Unless stated otherwise, this recommendation is intended to apply only to the subject well and not for area-wide use. Approval of the well completion methods for protection of this groundwater falls under the jurisdiction of the Railroad Commission of Texas. This recommendation is intended for normal drilling, production, and plugging operations only. It does not apply to saltwater disposal operation into a nonproductive zone (RRC Form W-14).

If you have any questions, please contact us at 512-239-0515, sc@tceq.state.tx.us, or by mail MC-151.

Sincerely,

Digitally signed by Jack Oswalt
DN: c=US, st=Texas, l=Austin, ou=Surface
Casing, ou=Texas Commission on
Environmental Quality, cn=Jack Oswalt,
email=joswalt@tceq.state.tx.us
Date: 2010.10.13 09:56:13 -0500

GEOLOGIST SEAL



Jack M. Oswalt, P.G.

Geologist, Surface Casing Team
Waste Permits Division

The seal appearing on this document was authorized by Jack M. Oswalt on 10/13/2010
Note: Alteration of this electronic document will invalidate the digital signature.

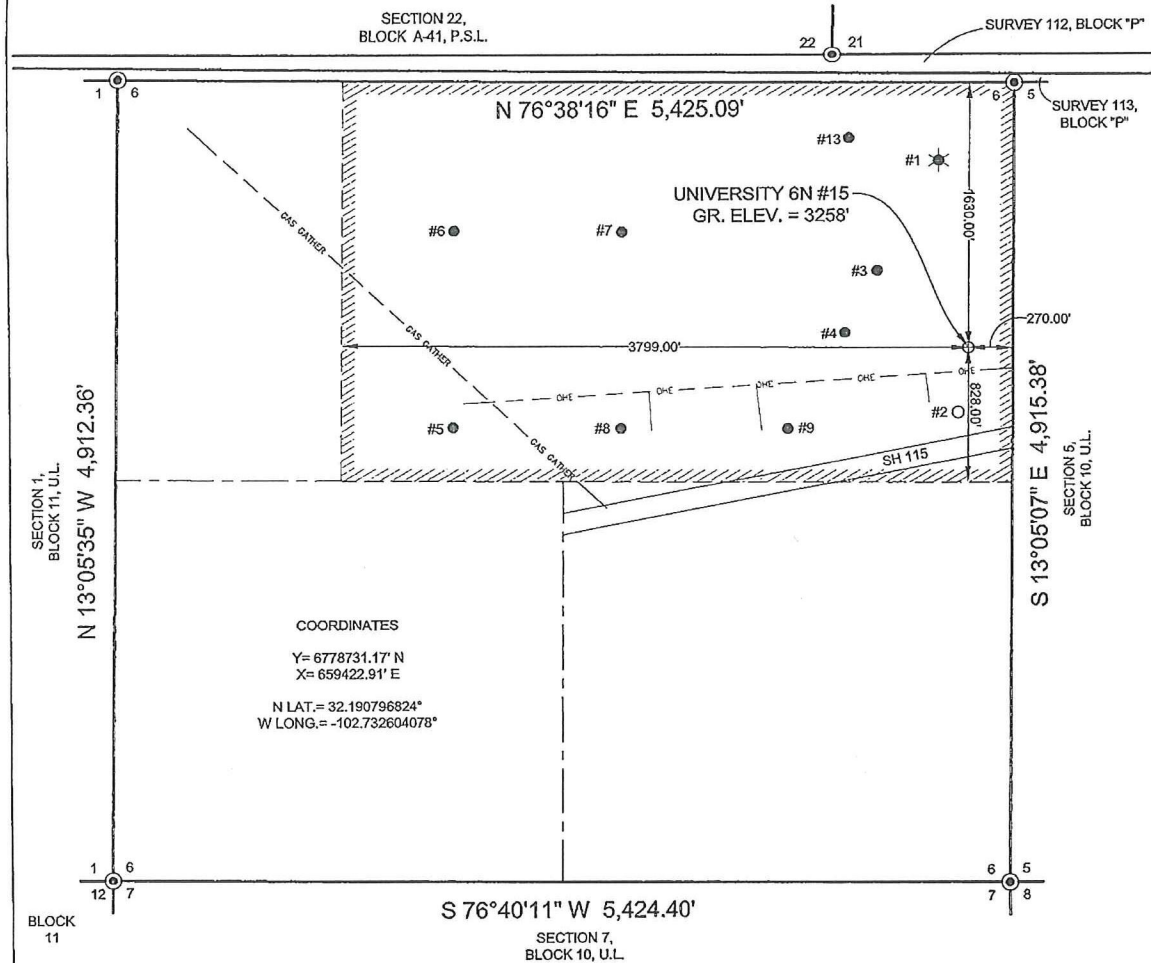
TCEQ Form 8051R
Rev. 5/9/2008

P.O. Box 13087 Austin, Texas 78711 3087

512 239 1000

Internet address: www.tceq.state.tx.us

SECTION 6, BLOCK 10, U.L.
ANDREWS COUNTY, TEXAS



ADJACENT WELLS/FEATURES

NAME:	DISTANCE:	NAME:	DISTANCE:	NAME:	DISTANCE:
UNIVERSITY 6N #1	1167.00'	UNIVERSITY 6N #6	3197.00'	NEAREST POWERLINE	144.00'
UNIVERSITY 6N #2	403.00'	UNIVERSITY 6N #7	2216.00'	NEAREST PIPELINE	2413.00'
UNIVERSITY 6N #3	728.00'	UNIVERSITY 6N #8	2164.00'	SH 115	529.00'
UNIVERSITY 6N #4	753.00'	UNIVERSITY 6N 9	1197.00'		
UNIVERSITY 6N #5	3163.00'	UNIVERSITY 6N 13	1481.00'		

NOTES:

1. THIS LOCATION IS APPROXIMATELY 13.0 MILES WEST/SOUTHWEST OF ANDREWS, TEXAS.
2. SEE DOCUMENTS FILED FOR RECORD IN THIS OFFICE, WHICH DESCRIBE THE RECONSTRUCTION OF THIS SECTION.
3. BEARINGS, DISTANCES AND COORDINATES ARE RELATIVE TO THE LAMBERT CONICAL PROJECTION OF TEXAS STATE PLANE COORDINATE SYSTEM, NORTH CENTRAL ZONE, 1983 NORTH AMERICAN DATUM.
4. LEASE = NE1/4, E/2 OF THE NW1/4. TOTAL ACRES: 240.00 CALLED.
5. NAMES TAKEN FROM FIELD SIGNAGE.

I, the undersigned, do hereby certify that the survey information found on this permit plat was derived from field notes or electronic data of an actual on-the-ground survey made by me or under my supervision and is true and correct to the best of my knowledge and belief. No warranty is made or intended for the location of any or all easements that may exist within the bounds of this survey. The information presented hereon is for Texas Railroad Commission permitting only, and does not constitute or represent a complete boundary survey as defined by the T.B.P.L.S., "Professional Land Surveying Practices Act."



Gregory W. Shoults, RPLS, No. 5356

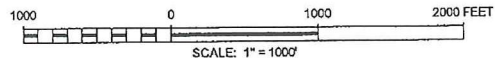
April 13, 2012



WEST TEXAS CONSULTANTS, INC.
ENGINEERS PLANNERS SURVEYORS
405 S.W. 1st STREET
ANDREWS, TEXAS 79714
(409) 523-2181
TEXAS REGISTERED ENGINEERING FIRM F-2746
TEXAS REGISTERED SURVEYOR FIRM #100792-00

LEGEND

- DENOTES PROPOSED WELL LOCATION
- DENOTES EXISTING WELL
- ⊙ DENOTES FOUND SECTION CORNER
- ⊗ DENOTES CALCULATED CORNER
- ▨ DENOTES LEASE AREA
- DENOTES 1/2 SECTION LINE
- ☒ DENOTES TANK BATTERY
- ☼ DENOTES OIL/GAS WELL



SandRidge

SandRidge Exploration And Production, LLC

UNIVERSITY 6N #15
LOCATED 1,630 FEET FROM THE NORTH LINE AND 270 FEET
FROM THE EAST LINE OF SECTION 6, BLOCK 10, U.L.,
ANDREWS COUNTY, TEXAS.

SURVEY DATE: 04/04/12 JOB No.: WTC-48481 DRAWN BY: J.J.G. SHEET 1 OF 3